

County of Santa Clara

Department of Planning and Development

County Government Center, East Wing, 7th Floor

70 West Hedding Street

San Jose, CA 95110

Phone: (408) 299-5700

www.sccplandev.org



Sargent Ranch Quarry Project **Errata to Draft Environmental Impact Report**

Date: September 13, 2022

SCH No. 2016072058

On July 25, 2022, the County of Santa Clara released the Draft Environmental Impact Report (DEIR) for the Sargent Ranch Quarry Project. This Errata describes minor corrections to the information presented in the DEIR that came to the attention of the County after the DEIR was released for circulation.

Figure 4-1 and **Figure 4-2** were referenced in the Table of Figures, Chapter 4, pages 4.0-10, 4.0-18, and 4.0-19 of the DEIR released on July 25, 2022; however, these figures were missing in the published DEIR. The figures were titled as Figure 4-1 (Alternative 3) and Figure 4-2 (Alternative 3 Conveyor Belt to Phases 1 and 2). The figures are correctly titled as: **Figure 4-1 (Alternative 2 and 3, Processing Plant Relocation)** and **Figure 4-2 (Alternative 2 and 3, Conveyor Belt Alignment for Phases 1 and 2)**. Figure 4-1 and Figure 4-2 are published below with deleted text marked in double ~~strike through~~ and new text is marked in double underline:

Figure 4-1; Alternative 3 Alternative 2 and 3, Processing Plant Relocation



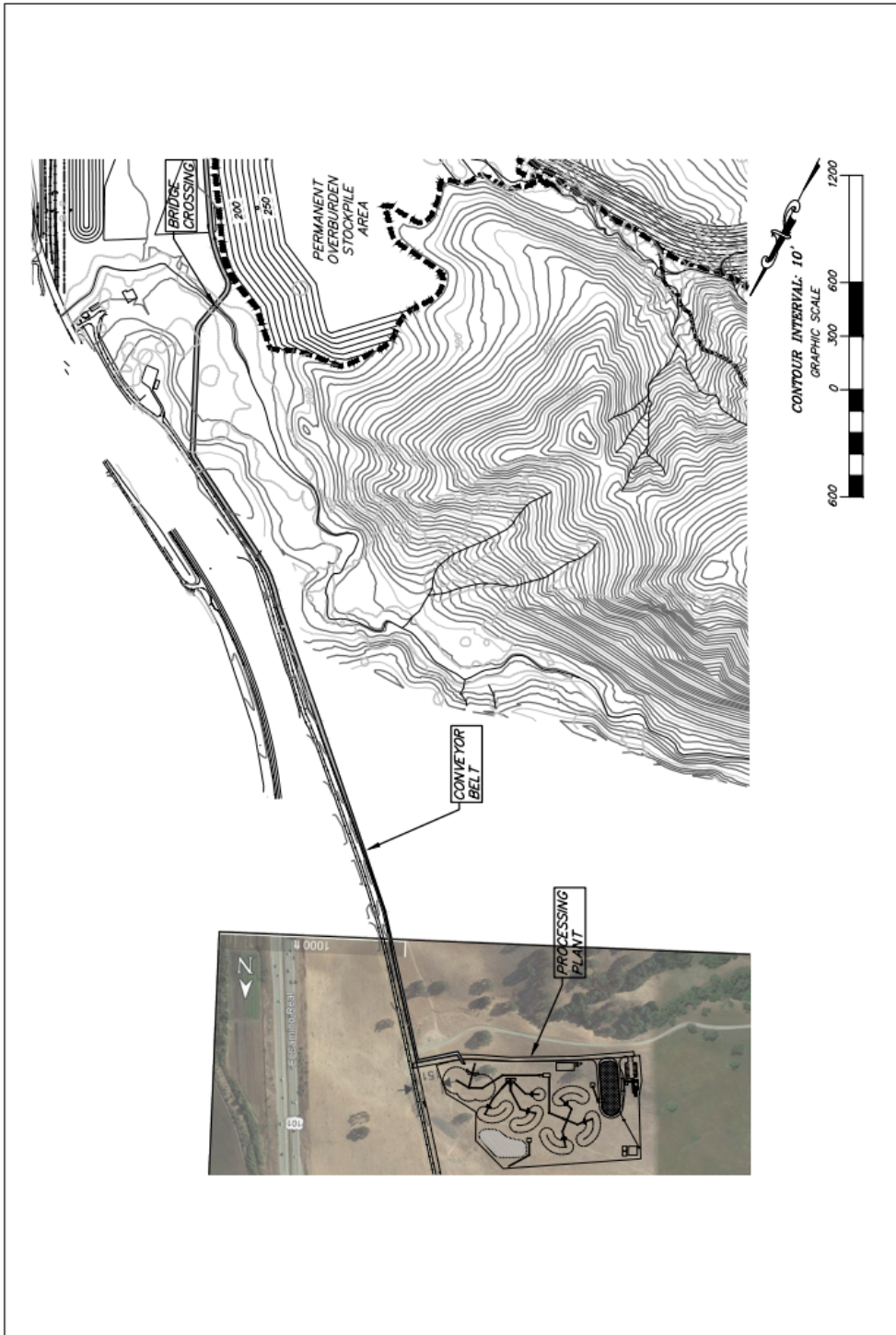
SCC Sargent Quarry

Figure 4-1
Alternative 3

SOURCE: Freeman Associates, 2021



Figure 4-2; ~~Alternative 3 Conveyor Belt to Phases 1 and 2, Alternative 2 and 3, Conveyor Belt~~ Alignment for Phases 1 and 2



SCC Sargent Quarry

Figure 4-2
Alternative 3 Conveyor Belt to Phases 1 and 2

SOURCE: Triad/Holmes Associates, 2020

