

SARGENT RANCH QUARRY

HIGHWAY 101 POST MILE 1.14 – 1.44

CONCEPTUAL HIGHWAY ACCESS ACCELERATION LANE

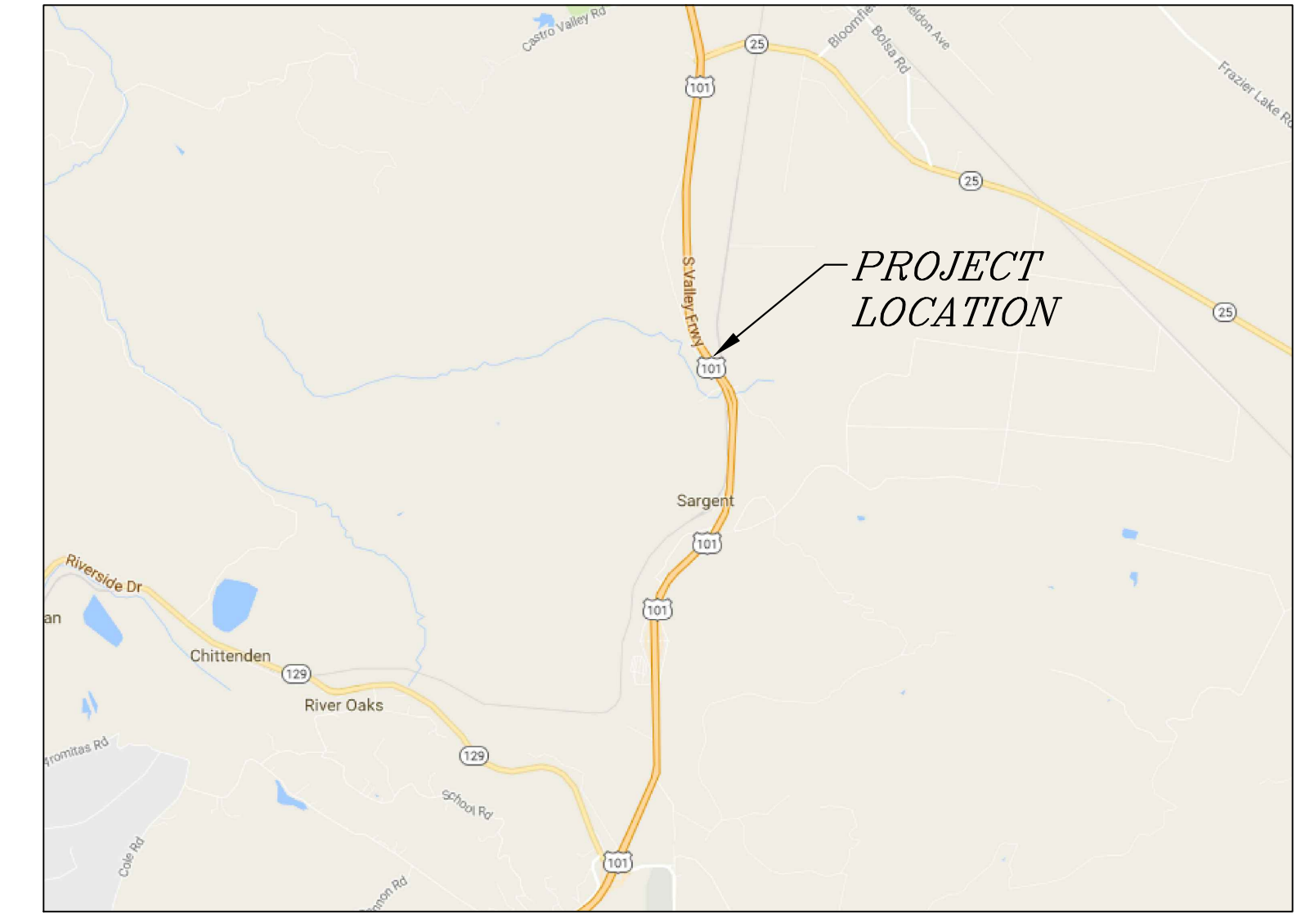


PREPARED & SUBMITTED BY:
 REGISTERED PROFESSIONAL ENGINEER
 THOMAS A. PLATZ
 NO. C 41039
 CIVIL
 STATE OF CALIFORNIA
 DATE: _____

Copyright (C) 2017 by Triad/Holmes Associates
 All Rights Reserved. This Document is Intended Only for Use on the Project Specified in the Title Block. Reproduction of this Document or Portions of this Document, Without the Expressed Written Consent of Triad/Holmes, is Prohibited.

REVISIONS:	BY:

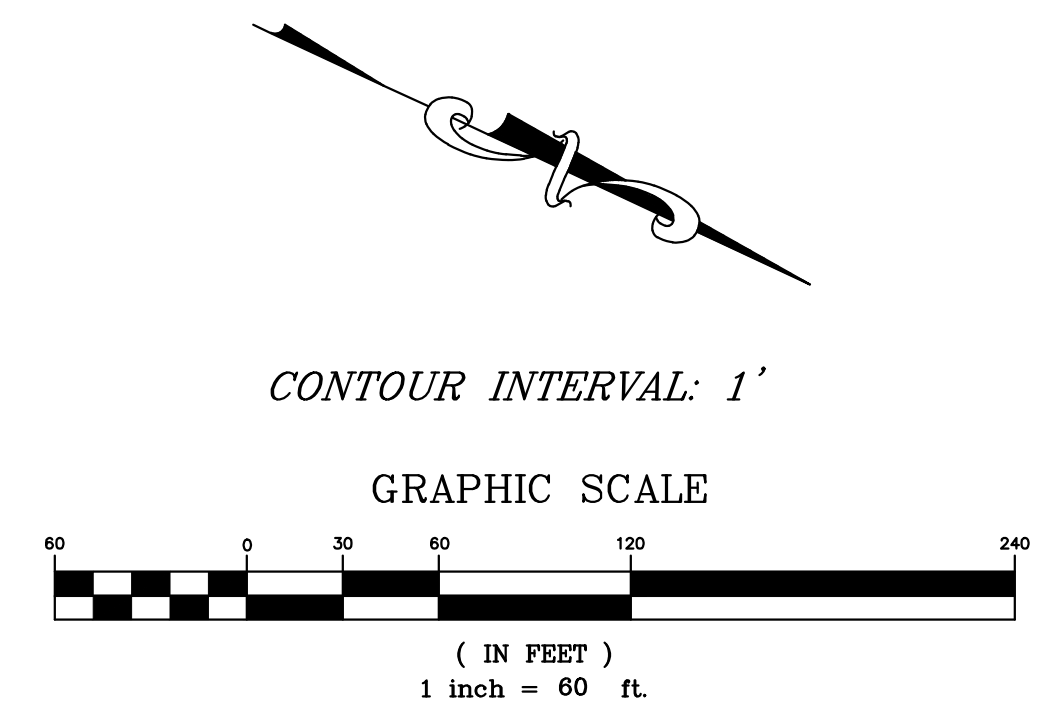
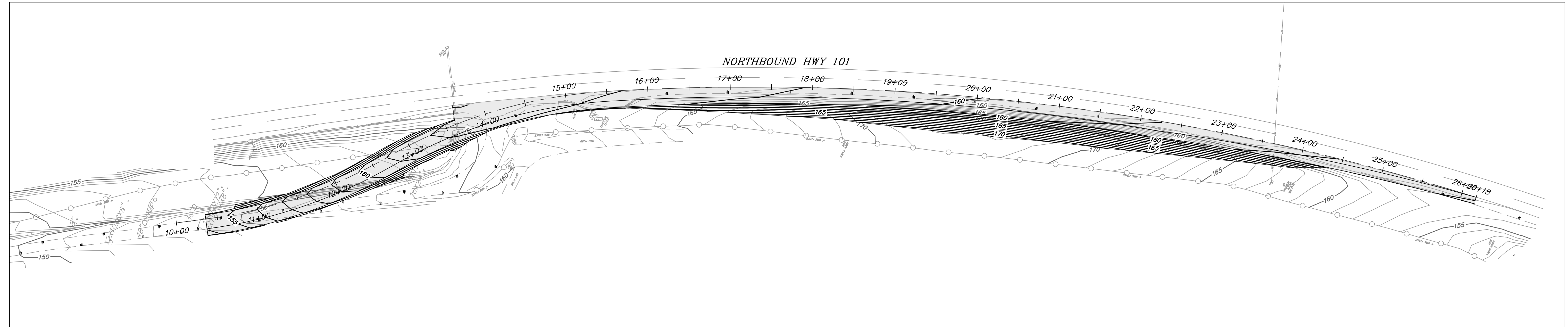
PREPARED FOR:
 VERNIE FREEMAN
 334 SAN ANTONIO RD.
 PALO ALTO, CA 94303



VICINITY MAP
N. T.S.

INDEX TO SHEETS

- C1. COVER SHEET
- C2. PLAN AND PROFILE STA 10+00 – 19+50
- C3. PLAN AND PROFILE STA 19+50 – 26+18



SARGENT RANCH QUARRY HIGHWAY ACCESS
COVER SHEET

DATE	05/01/2017
SCALE	1" = 60'
DRAWN	SR
JOB NO.	01.4020
DWG	C1
SHEET	1 OF 3

Copyright (C) 2017 by Triod/Holmes Associates

 All Rights Reserved. This Document is Intended Only for Use on the Project Specified in the Title Block. Any Reproduction of this Document or Portions of this Document, Without the Express Written Consent of Triod/Holmes, is Prohibited.

REVISIONS:	BY:

PREPARED FOR:

 VERNIE FREEMAN

 994 SAN ANTONIO RD.

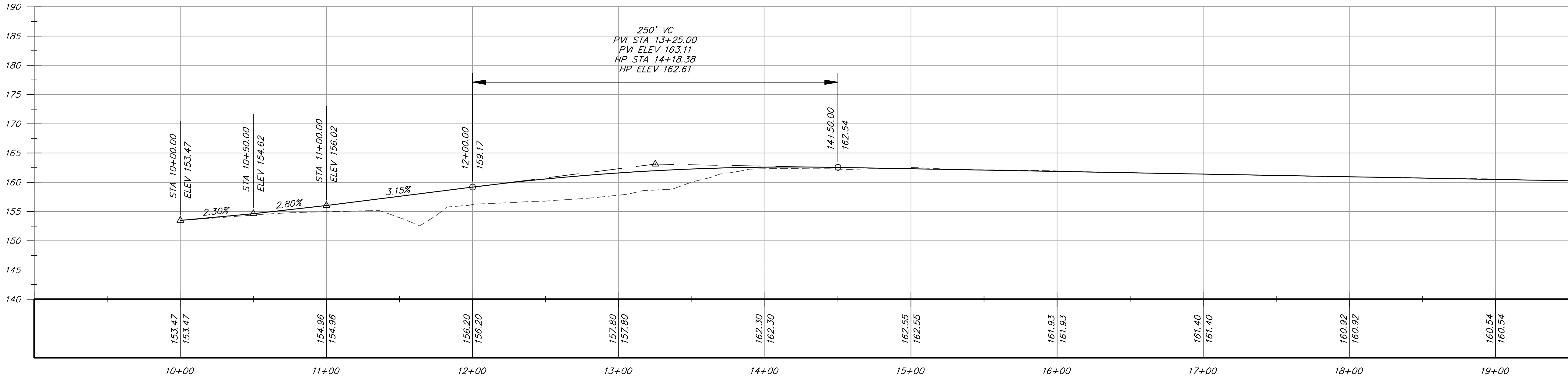
 PALO ALTO, CA 94303

SARGENT RANCH QUARRY HIGHWAY ACCESS

 CONCEPTUAL HIGHWAY ACCESS

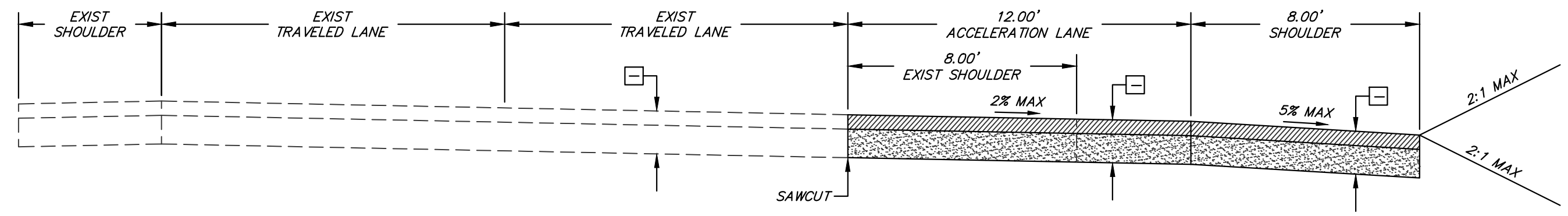
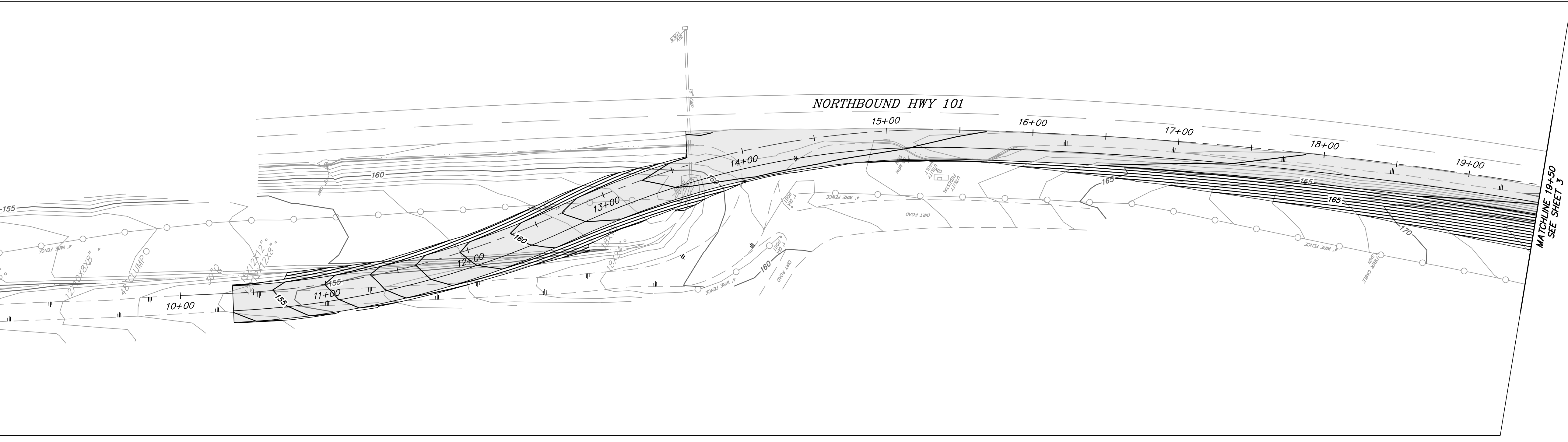
 ACCELERATION LANE

DATE	05/01/2017
SCALE	1" = 40'
DRAWN	SR
JOB NO.	01.4020
DWG	C2
SHEET	2 OF 3



LEGEND

- PROPERTY LINE
- - - CENTERLINE
- ||— EDGE OF PAVEMENT
- BOULDER, DRAWN TO APPROX. SIZE ORIENTATION VARIES
- FENCE
- 2" P TREE TYPE & SIZE P=PINE/F=FIR/S=SNAG
- - - 155 EXISTING GROUND CONTOUR & ELEV.
- FIRE HYDRANT
- WATER VALVE BOX
- SEWER MANHOLE
- - - W - EXISTING WATERLINE
- - - SS - EXISTING SEWERLINE
- - - OHU - OVERHEAD UTILITIES



NORTHBOUND HIGHWAY 101

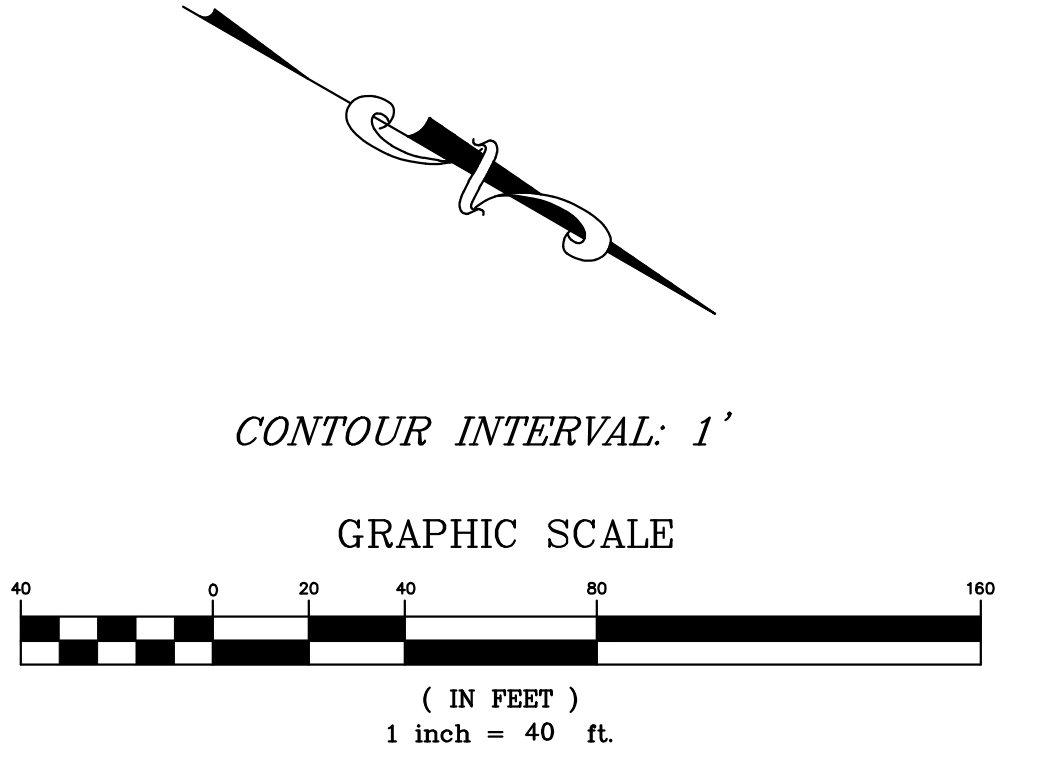
 TYP SECTION STA 15+47.99 TO STA 21+86.32

EARTHWORK ESTIMATE

CUT = 2,950 CY

 FILL = 1,000 CY

EARTHWORK QUANTITIES DO NOT INCLUDE ANY ADJUSTMENTS FOR SHRINKAGE, ROCK LOSS, STRIPPING, FOUNDATION AND TRENCH SPOILS, COMPACTION AND CONSOLIDATION OR OVEREXCAVATION. THE CONTRACTOR SHALL MAKE AN INDEPENDENT QUANTITY TAKEOFF AND BASE HIS BID ON QUANTITIES SO CALCULATED.



C:\Users\eroj\THAMC\appdata\Local\Temp\14c79d9a-6f52-4020-Conceptual Accel Lane.dwg Apr 29, 2017 - 10:13am, srfj

REVISIONS:	BY:

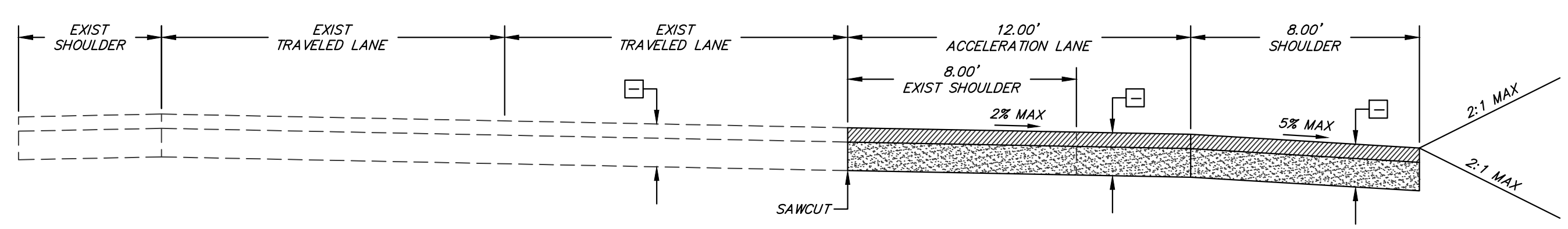
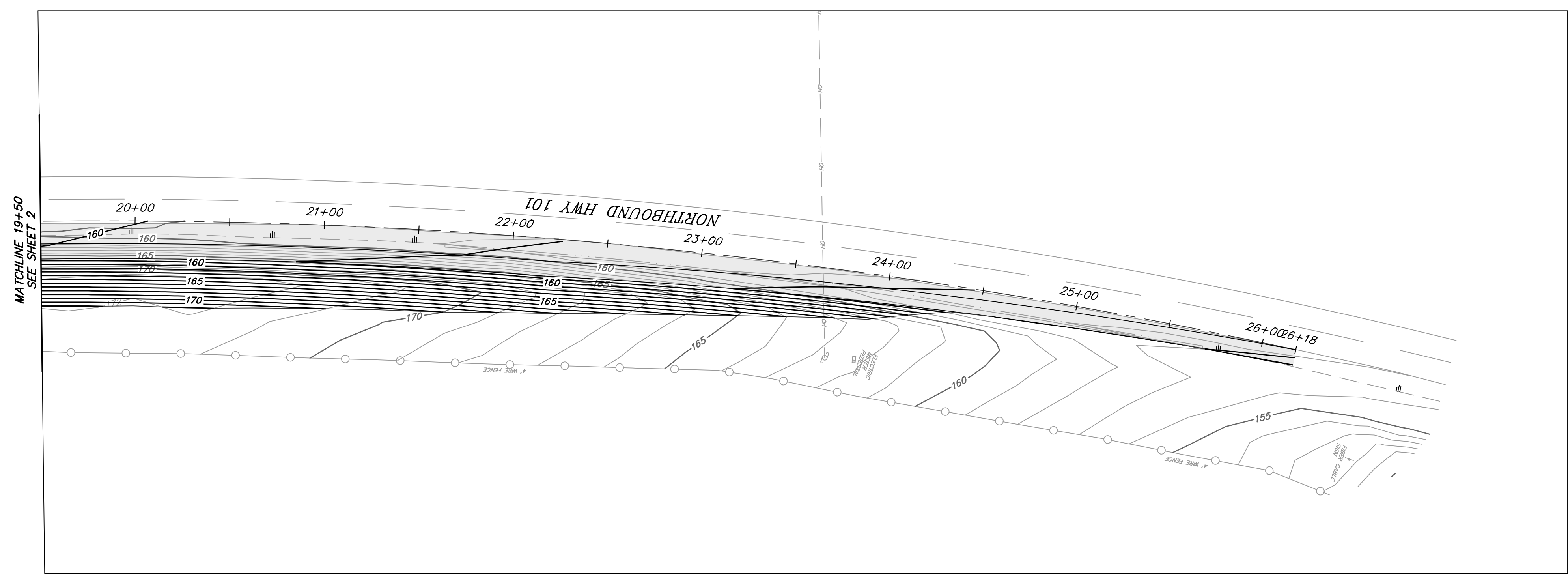
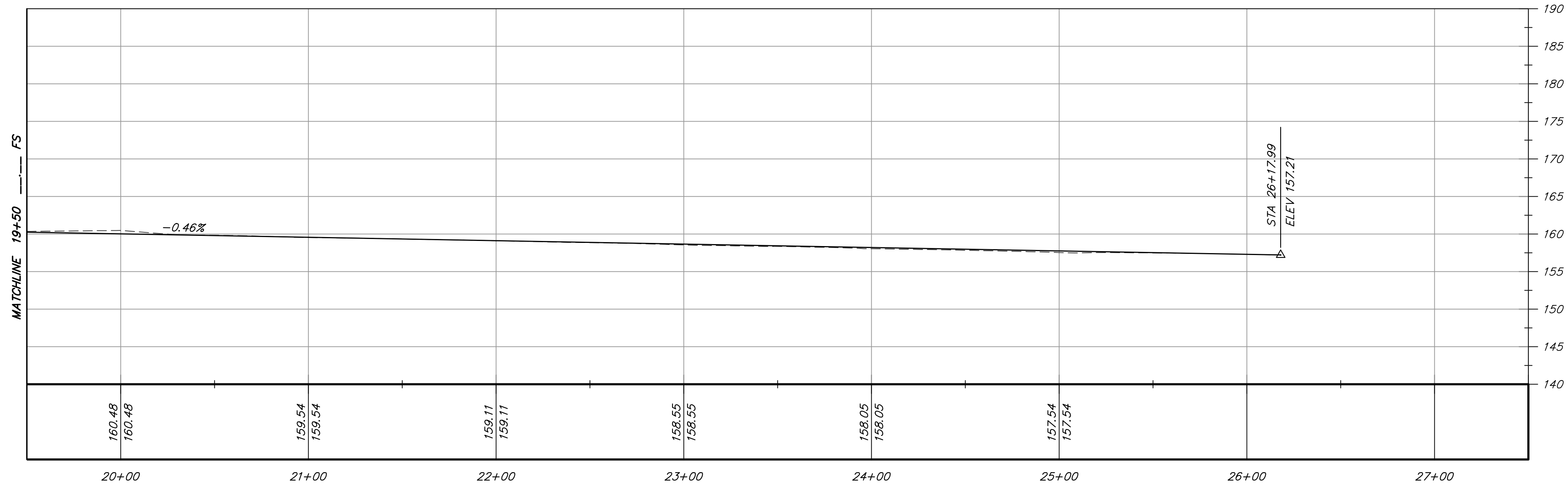
PREPARED FOR:
VERNE FREEMAN
894 SAN ANTONIO RD.
PALO ALTO, CA 94303

SARGENT RANCH QUARRY HIGHWAY ACCESS
CONCEPTUAL HIGHWAY ACCESS
ACCELERATION LANE

DATE	05/01/2017
SCALE	1" = 40'
DRAWN	SR
JOB NO.	01.4020
DWG	C3
SHEET	3 OF 3

LEGEND

-----	PROPERTY LINE
----	CENTERLINE
---	EDGE OF PAVEMENT
⬢	BOULDER, DRAWN TO APPROX. SIZE ORIENTATION VARIES
○	FENCE
⊙	TREE TYPE & SIZE P=PINE/F=FIR/S=SNAG
~	EXISTING GROUND CONTOUR & ELEV.
⊗	FIRE HYDRANT
⊕	WATER VALVE BOX
⊙	SEWER MANHOLE
—W—	EXISTING WATERLINE
—SS—	EXISTING SEWERLINE
—OHU—	OVERHEAD UTILITIES

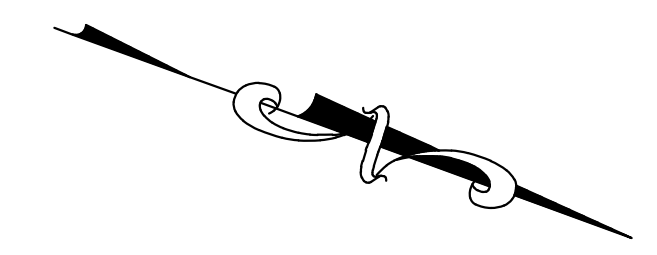


NORTHBOUND HIGHWAY 101
TYP SECTION STA 15+47.99 TO STA 21+86.32

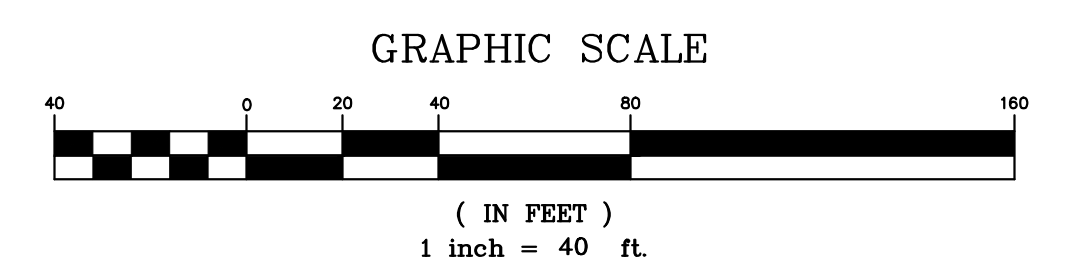
EARTHWORK ESTIMATE

CUT = 2,950 CY
FILL = 1,000 CY

EARTHWORK QUANTITIES DO NOT INCLUDE ANY ADJUSTMENTS FOR SHRINKAGE, ROCK LOSS, STRIPPING, FOUNDATION AND TRENCH SPOILS, COMPACTION AND CONSOLIDATION OR OVEREXCAVATION. THE CONTRACTOR SHALL MAKE AN INDEPENDENT QUANTITY TAKEOFF AND BASE HIS BID ON QUANTITIES SO CALCULATED.



CONTOUR INTERVAL: 1'



C:\Users\eroj\THA\MC\lppadada\local\lppadada_015214020_Conceptual_Accel_Lane.dwg Apr 29, 2017 - 10:13am sroj