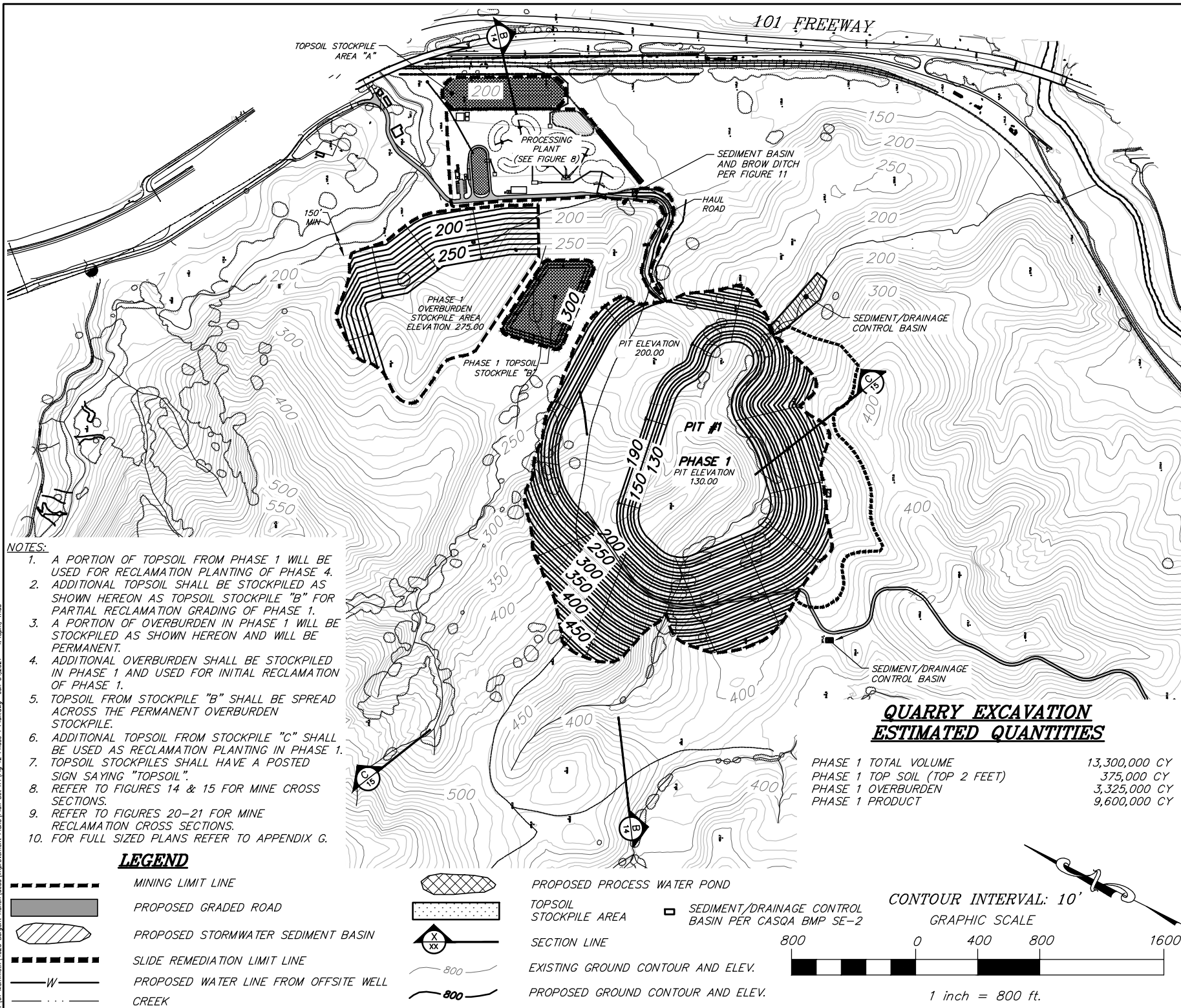


NO.	DATE	BY	DESCRIPTION

**SARGENT RANCH QUARRY**  
**PHASE 1 EXCAVATION PLAN**



- NOTES:**
1. A PORTION OF TOPSOIL FROM PHASE 1 WILL BE USED FOR RECLAMATION PLANTING OF PHASE 4.
  2. ADDITIONAL TOPSOIL SHALL BE STOCKPILED AS SHOWN HEREON AS TOPSOIL STOCKPILE "B" FOR PARTIAL RECLAMATION GRADING OF PHASE 1.
  3. A PORTION OF OVERBURDEN IN PHASE 1 WILL BE STOCKPILED AS SHOWN HEREON AND WILL BE PERMANENT.
  4. ADDITIONAL OVERBURDEN SHALL BE STOCKPILED IN PHASE 1 AND USED FOR INITIAL RECLAMATION OF PHASE 1.
  5. TOPSOIL FROM STOCKPILE "B" SHALL BE SPREAD ACROSS THE PERMANENT OVERBURDEN STOCKPILE.
  6. ADDITIONAL TOPSOIL FROM STOCKPILE "C" SHALL BE USED AS RECLAMATION PLANTING IN PHASE 1.
  7. TOPSOIL STOCKPILES SHALL HAVE A POSTED SIGN SAYING "TOPSOIL".
  8. REFER TO FIGURES 14 & 15 FOR MINE CROSS SECTIONS.
  9. REFER TO FIGURES 20-21 FOR MINE RECLAMATION CROSS SECTIONS.
  10. FOR FULL SIZED PLANS REFER TO APPENDIX G.

**LEGEND**

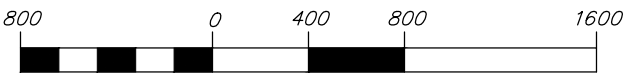
- |  |                                       |  |                                   |
|--|---------------------------------------|--|-----------------------------------|
|  | MINING LIMIT LINE                     |  | PROPOSED PROCESS WATER POND       |
|  | PROPOSED GRADED ROAD                  |  | TOPSOIL STOCKPILE AREA            |
|  | PROPOSED STORMWATER SEDIMENT BASIN    |  | SECTION LINE                      |
|  | SLIDE REMEDIATION LIMIT LINE          |  | EXISTING GROUND CONTOUR AND ELEV. |
|  | PROPOSED WATER LINE FROM OFFSITE WELL |  | PROPOSED GROUND CONTOUR AND ELEV. |
|  | CREEK                                 |  |                                   |

**QUARRY EXCAVATION ESTIMATED QUANTITIES**

PHASE 1 TOTAL VOLUME	13,300,000 CY
PHASE 1 TOP SOIL (TOP 2 FEET)	375,000 CY
PHASE 1 OVERBURDEN	3,325,000 CY
PHASE 1 PRODUCT	9,600,000 CY

CONTOUR INTERVAL: 10'

GRAPHIC SCALE



1 inch = 800 ft.

Z:\07\_Mammoth\4020-Sargent\_Ranch\Local\_Improvement\_Plans\Plan Set\04\Fig. 12 Phase 1 Plan.dwg Jan 04/2021 4:49pm Triod