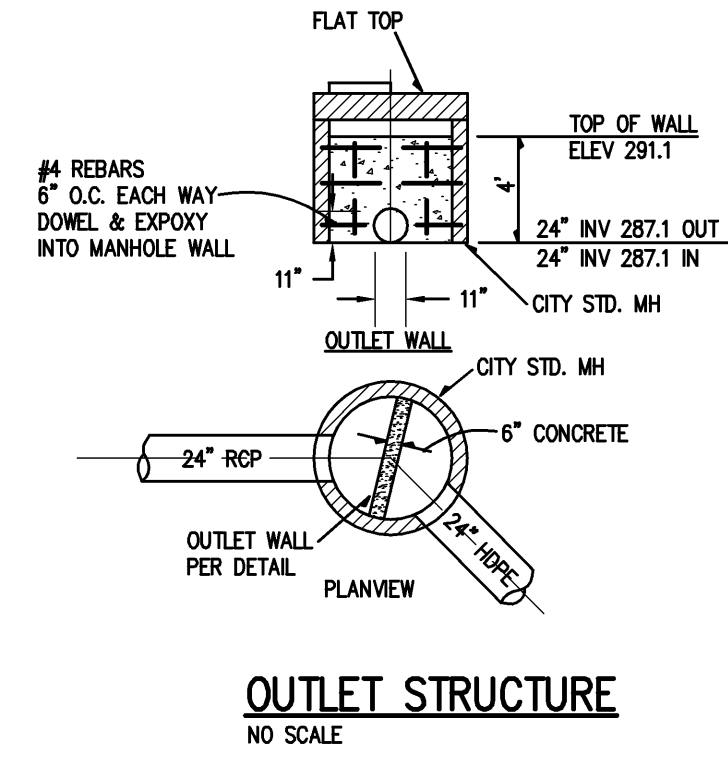
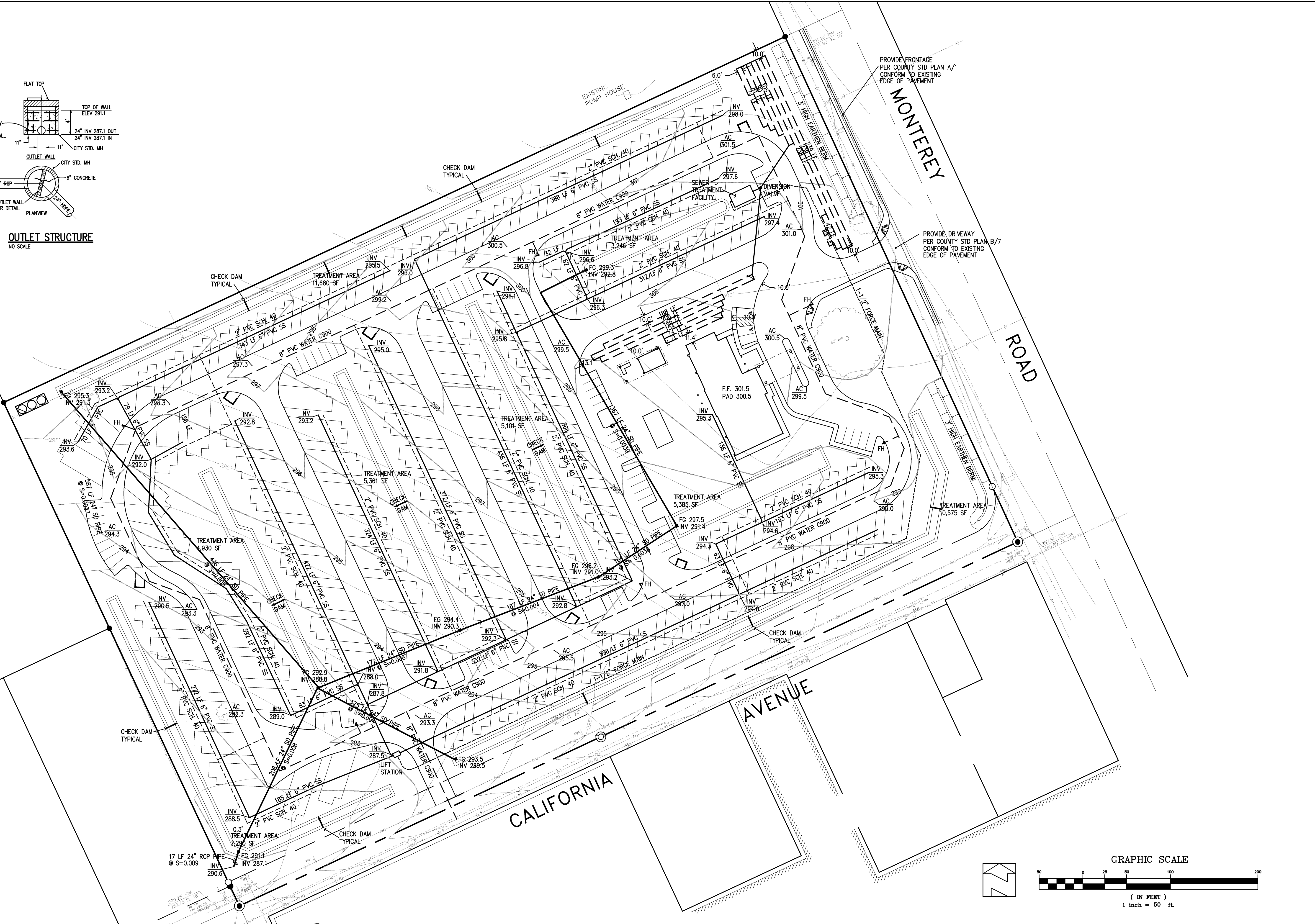


THE USE OF THESE PLANS AND SPECIFICATIONS SHALL BE RESTRICTED TO THE ORIGINAL SITE FOR WHICH THEY WERE PREPARED AND PUBLICATION THEREOF IS EXPRESSLY LIMITED TO SUCH USE. REPRODUCTION OR PUBLICATION IN WHOLE OR PART, IS PROHIBITED. TITLE TO THE PLANS AND SPECIFICATIONS REMAINS IN THE ENGINEER WITHOUT PREJUDICE. VISUAL CONTACT WITH THESE PLANS AND SPECIFICATIONS SHALL CONSTITUTE PRIMA FACIE EVIDENCE OF THE ACCEPTANCE OF THESE RESTRICTIONS.

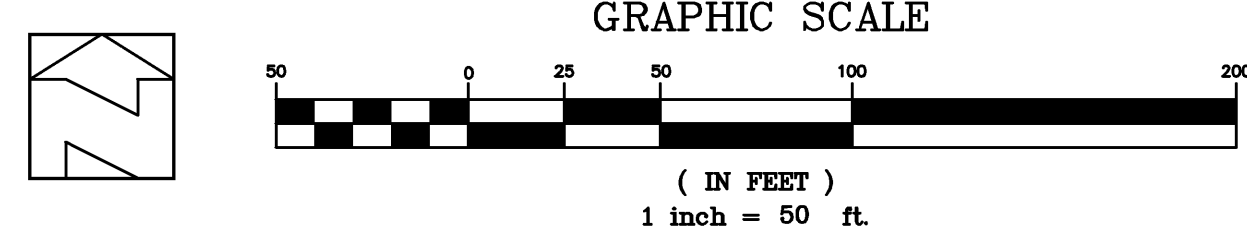


OUTLET STRUCTURE
NO SCALE



PROVIDE FRONTAGE PER COUNTY STD PLAN A/1 CONFORM TO EXISTING EDGE OF PAVEMENT

PROVIDE DRIVEWAY PER COUNTY STD PLAN B/7 CONFORM TO EXISTING EDGE OF PAVEMENT



REVISIONS:		
DATE	DESCRIPTION	BY:

Hanna Brunetti
 • Civil Engineers • Land Surveyors •
 • Construction Managers •
 Gilroy California (408) 842-2173

DATE: OCTOBER 2015
 HORIZ. SCALE: 1"=50'
 VERT. SCALE: NONE
 DESIGNED BY: AW
 CHECKED BY:
 DRAWN BY: TM

REFERENCES

UNINCORPORATED
 OCTOBER 2015

Preliminary Grading & Utility Plan
 Lands of Patel - at the corner of Monterey Road and California Avenue
 SANTA CLARA COUNTY CALIFORNIA

SHEET
4
 OF 6
 JOB NO.
14046