

**LEHIGH PERMANENTE PLANT**  
Cupertino, CA

## 001\_LOCATION

*Oaks Shopping Center, Stevens Creek Blvd & Mary Ave*



Existing Condition



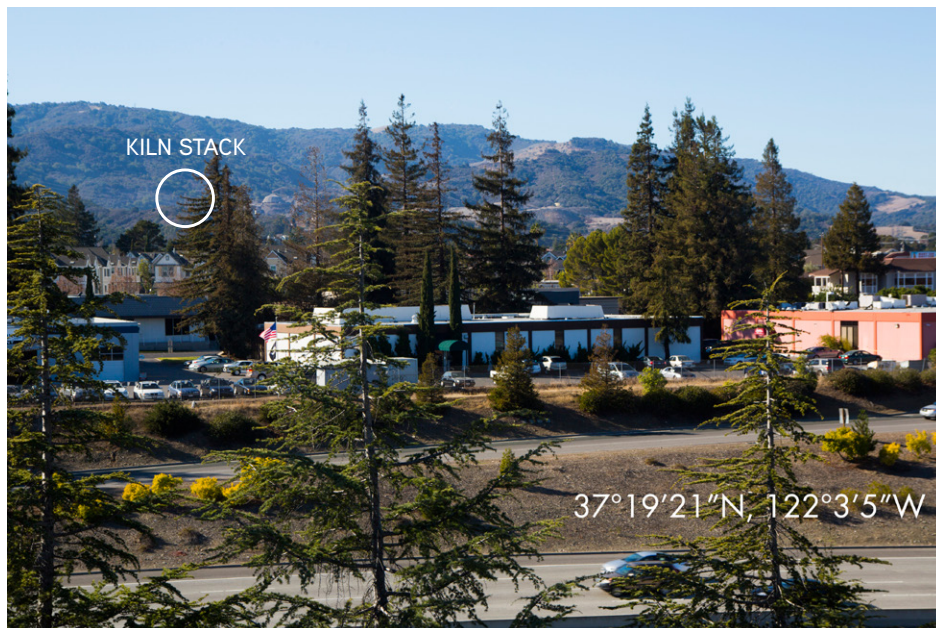
After Cooler and Kiln Stacks

## 002\_LOCATION

*Parking Structure at De Anza College*



Existing Condition



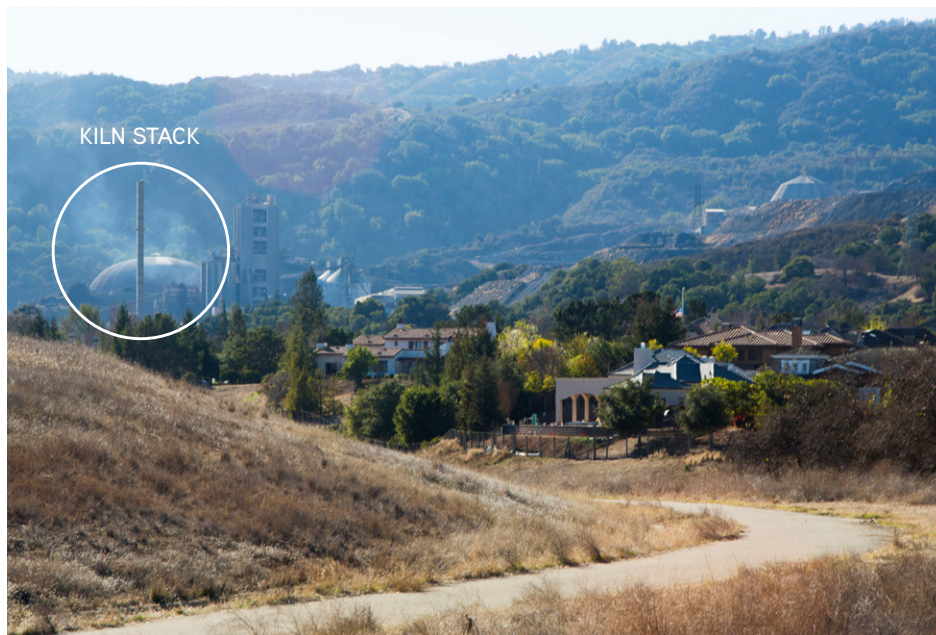
After Cooler and Kiln Stacks

## 003\_LOCATION

*Cristo Rey Dr & Cristo Rey Pl*



Existing Condition



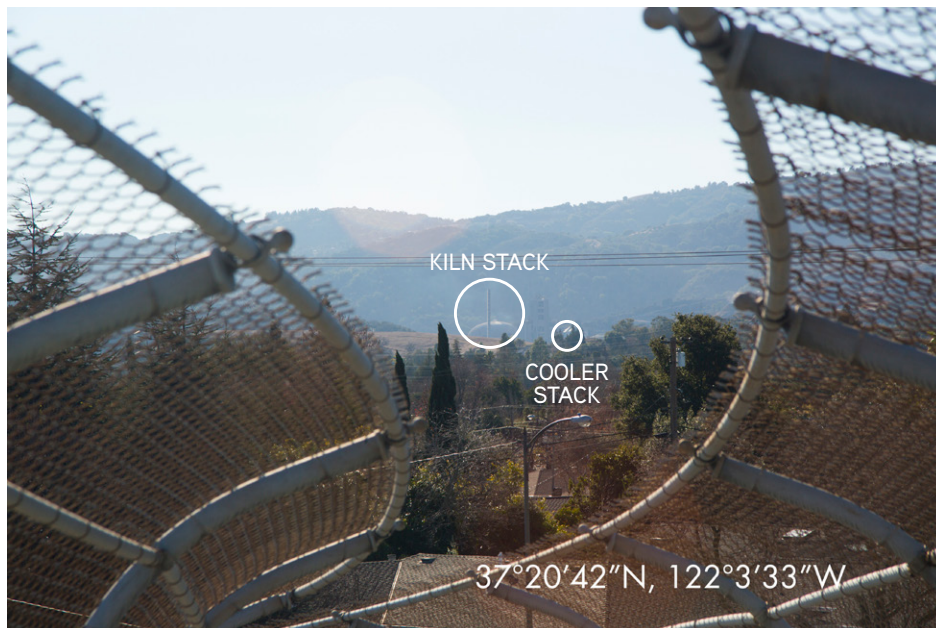
After Cooler and Kiln Stacks

## 004\_LOCATION

*Pedestrian Bridge on CA-85 at The Dalles Ave*



Existing Condition



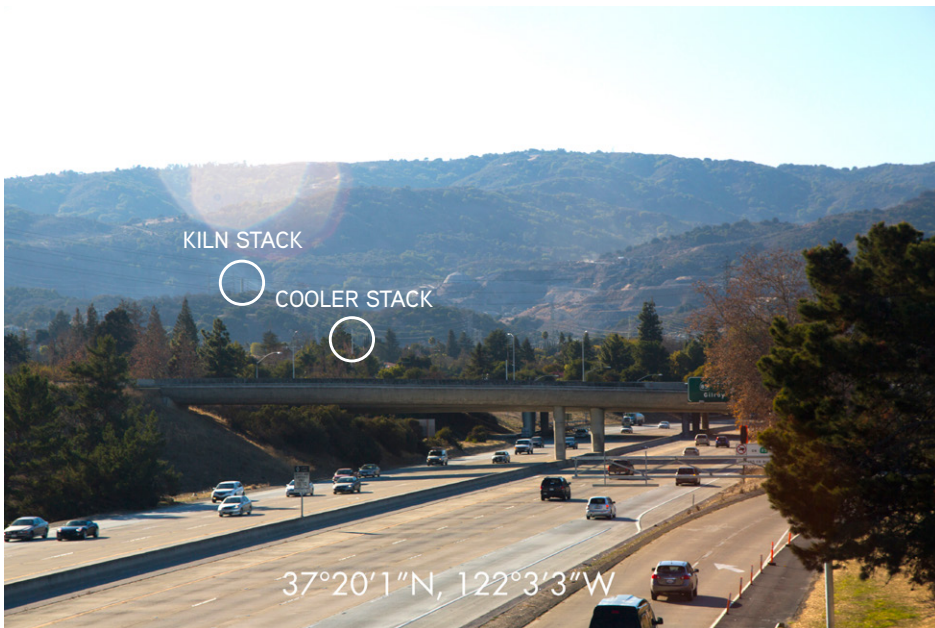
After Cooler and Kiln Stacks

## 005\_LOCATION

*The Don Burnett Bicycle Pedestrian Bridge on I-280*



Existing Condition



After Cooler and Kiln Stacks