

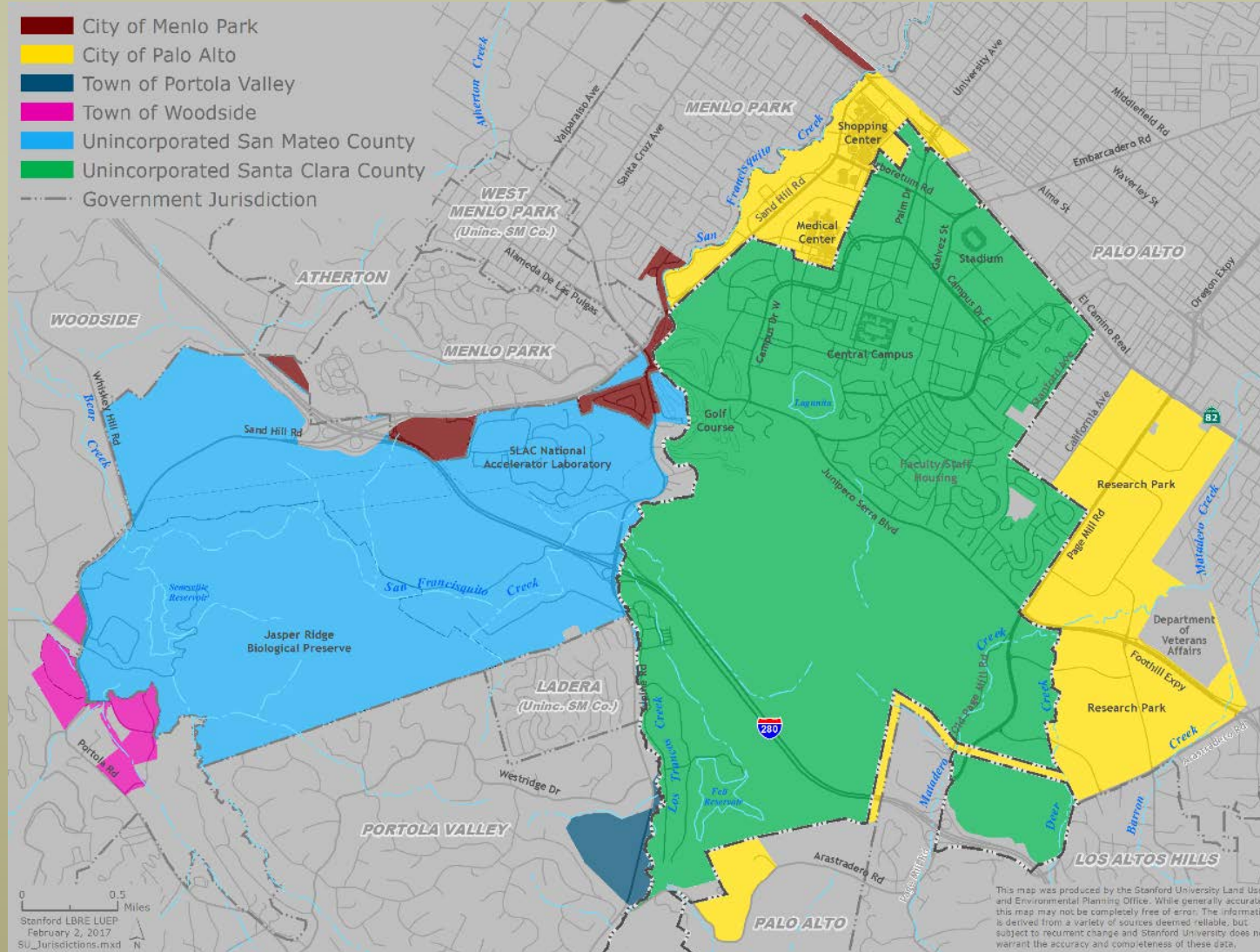
CRG Meeting

Stanford 2018 General Use Permit

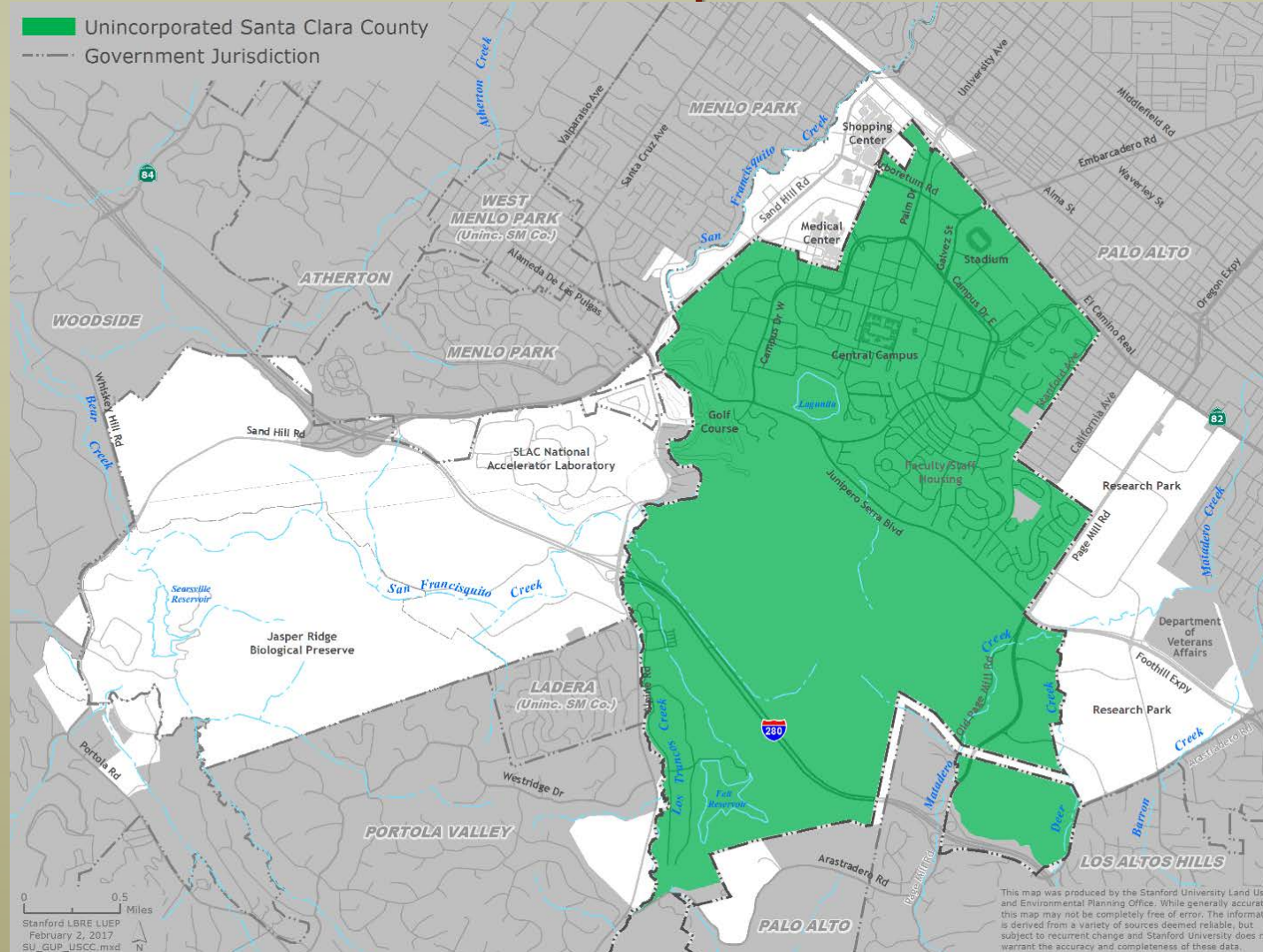
County of Santa Clara Department of Planning and Development
Palo Alto Arts Center
April 13, 2017



Stanford Lands in County and Surrounding Jurisdictions



Application for Stanford Lands in Unincorporated Santa Clara County



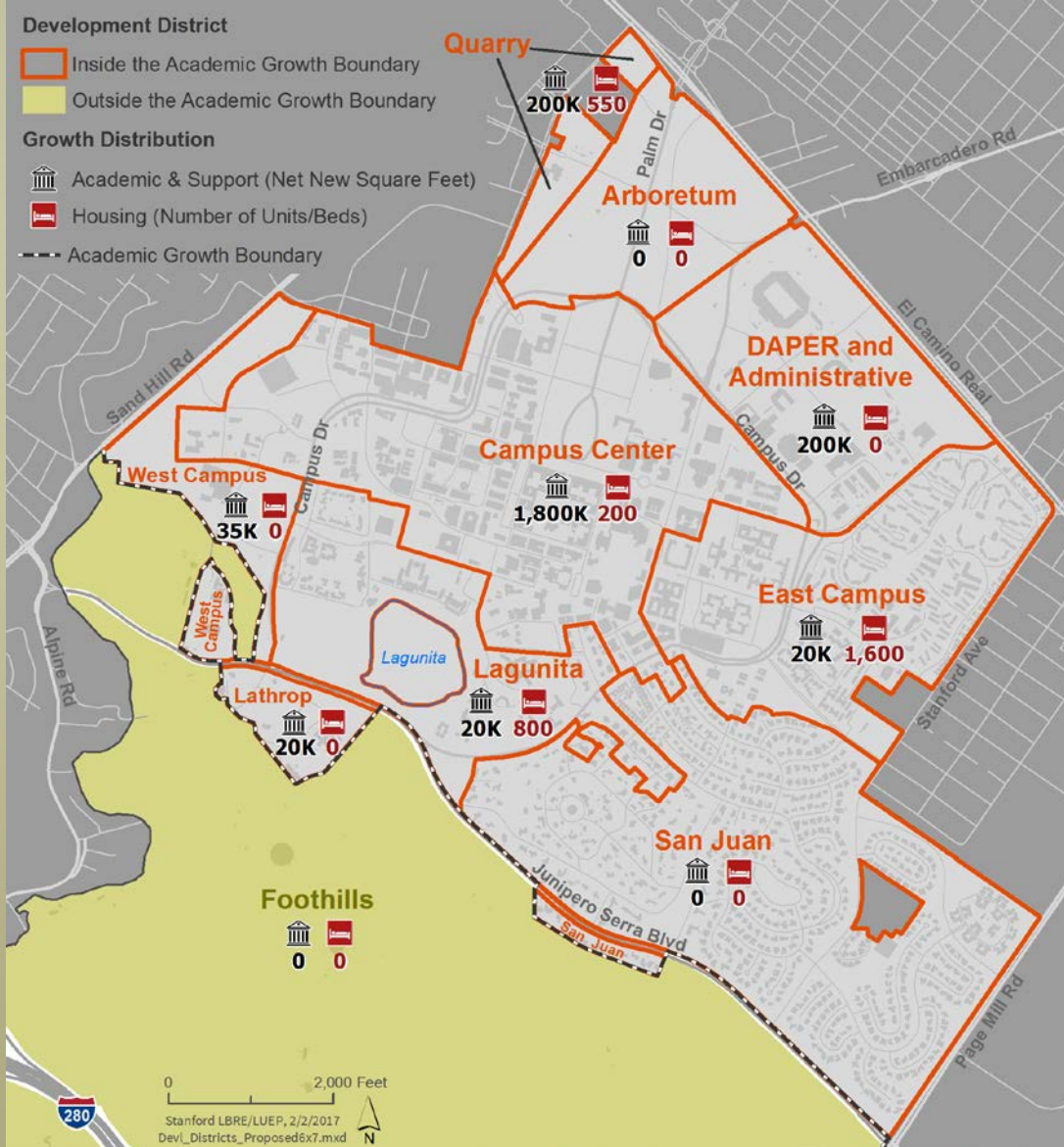
- “GUP 2018” Application submitted in November 2016 for Stanford Lands in the County
- Application includes updates to GUP, SCP and Zoning

Academic Growth Boundary in Unincorporated Santa Clara County



- *All proposed development would be located within the existing Academic Growth Boundary*

2018 Development Request



2.275 million net new square feet of academic and academic support uses

3,150 net new on-campus housing units/beds (1,225,000 sf)

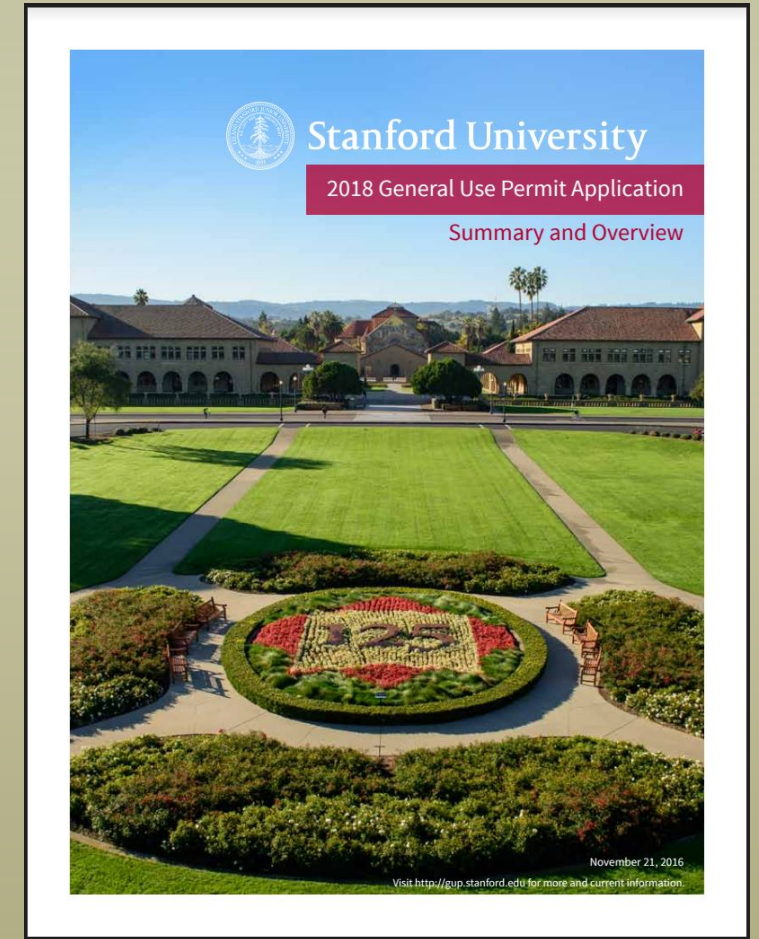
40,000 net new square feet of child care centers and facilities

No development proposed in Foothills or San Juan Development Districts

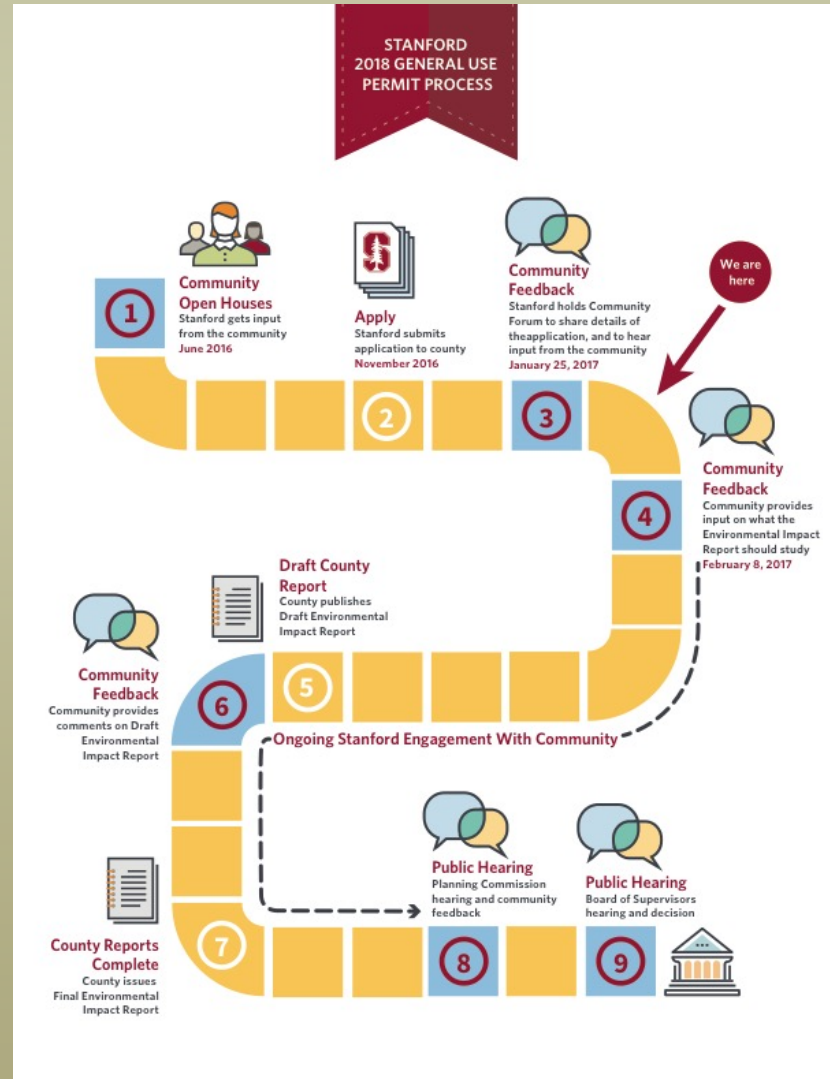
Application Planning Time Horizon 2035

The 2018 GUP request is proposed to be:

- *Consistent* with 2000 Stanford Community Plan policies
- *Retain the academic growth boundary* that protects the foothills
- Maintain a *No New Net Trips* to limit automobile congestion
- Provide *housing concurrent* with academic growth



2018 General Use Permit Review Process



Resources

The following resources are available on the County Planning Website

<https://www.sccgov.org/Stanford.aspx>

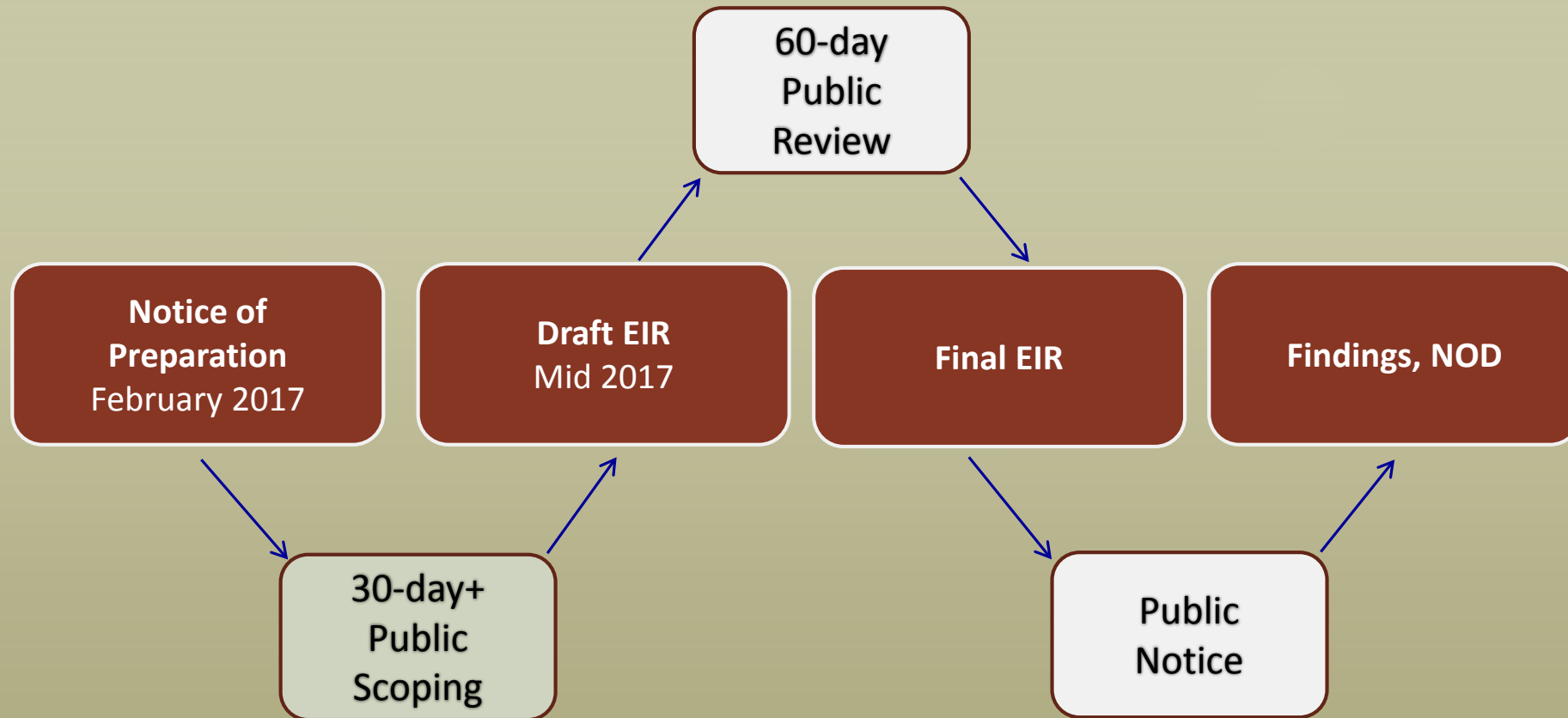
- *2000 Community Plan and General Use Permit*
- *2000 Environmental Impact Report*
- *The Sustainable Development Study (2009) and all other special studies*
- *15 Annual Reports presented to the Planning Commission*
- *15 Traffic Reports documenting compliance with the No New Net Trips*

Environmental Impact Report (EIR)

EIR – Informational document for providing public agencies and public with detailed information as follows:

- The effect of the proposed project on the environment*
- Ways in which the significant effects can be mitigated*
- Alternatives to the proposed project that could reduce or eliminate significant effects*

EIR Process Overview



Next CRG Meeting

May 11, 2017 Agenda

1. Review Annual Report #16

2. 2018 GUP Review

- Presentation on Traffic Impact Analysis*
- Review Scoping Meeting Comments*

2017 CRG Meeting Schedule

Tentative schedule of Agenda items:

May 11 – AR 16, TIA and Scoping Comment

June 8 – Historic Resources, GHG and Air Quality analyses

September 14 – Draft EIR Presentation

December 14 – Review Draft EIR and Preliminary Conditions of Approval

CRG Meeting

Stanford 2018 General Use Permit

County of Santa Clara Department of Planning and Development
Palo Alto Arts Center
April 13, 2017

