

---

**RENGSTORFF HOUSE,  
MOUNTAIN VIEW**

*Circa 1897, Restored  
1991*

*Mountain View's finest  
examples of Victorian  
Italianate Architecture  
on the West Coast.*

*Built as a residence in  
1867 for Rengstorff and  
his family, the restored  
house (1991) stands as  
testimony to the  
pioneering family's  
significant contribution  
to the development of  
Mountain View and the  
Peninsula.*

---

*Submitted by*

**Kristina Perino**

**City of Mountain View**



**BEFORE 1991:** Photo Credits: City of Mountain View, Historical Photos



**AFTER 1991:** Photo Credits: Robert Dunton (L) and ille Photography (R)



---

## **CASA GRANDE, SAN JOSE**

*Circa 1855, Renovated 2010*

*Constructed in 1855 as a residence for the manager of the New Almaden Mine (Barron Forbes Company), it is significant for its association with the Quicksilver Mining Company and Mine, which was the most valuable single mine in California and the first quicksilver deposit discovered in North America, and as a distinctive representation of mid-nineteenth century Federal Revival style architecture in Santa Clara County influenced by prominent Philadelphia architect Gordon Cummings.*

---

**Submitted by**

**Mark Frederick, Manager Park Development, Parks and Recreation Department, Santa Clara County**

---



**Before 2010: Casa Grande**



**AFTER Renovation in 2010**



---

***SOUTH BAY YACHT  
CLUB BUILDING, ALVISO***

*Circa 1903, Restored  
1985*

*The SBYC clubhouse and  
boat storage building  
were built in 1903 at the  
corner of (old) Hope and  
Taylor Streets. A plan  
was being formulated to  
save the structure when  
the disastrous flood in  
1982 inundated the  
building and a good part  
of Alviso.*

*After much discussion and  
negotiations with Santa  
Clara Valley Water  
District and the South Bay  
Yacht Club members, the  
Yacht Club was moved  
and restored to its  
current state in 1985.*

---

***Submitted by***

**Russ Robinson, Staff Commodore  
and Historian, South Bay Yacht Club**



**BEFORE 1985:** Photo Credits: Russ Robinson, SBYC.



**AFTER 1985:** Photo Credits: Russ Robinson, SBYC.



**FORMER SEA SCOUT BUILDING, PALO ALTO**

*Circa 1941, Restored 2012*

*The Sea Scout Building was built for the Sea Scouts and Mariners in 1941.*

*Commissioned by Lucie Stern, a prominent philanthropist in Northern California and designed by the renowned architects Birge Clark and Davis Clark, the Sea Scout Building is an "exceptional building of pre-eminent national or state importance" restored by Environmental Volunteers in 2012*

**Submitted by**

**Allan Berkovitz, Executive Director, Environmental Volunteers.**



**BEFORE 2012:** Photo Credits: Environmental Volunteers (Exterior (L) ) and Interior (R) prior to renovation



**BEFORE 2012:** Photo Credits: Environmental Volunteers (Exterior (L) ) and Interior (R) prior to renovation



**AFTER 2012:** Photo Credits: Environmental Volunteers (Exterior and Interior Renovated Views)



**AFTER 2012:** Photo Credits: Environmental Volunteers (Exterior and Interior Renovated Views)

---

## **CESAR CHAVEZ- MEMORIAL**

### *César Estrada Chávez*

*(March 31, 1927 - April 23, 1993) was a Mexican American farm worker, labor leader, and civil rights activist who co-founded the National Farm Workers Association, which later became the United Farm Workers. His work led to numerous improvements for union workers. He is considered a hero for farm laborers.*

*The City of San Jose commemorated and landmarked historical resources associated with the life of Cesar Chavez in 2012.*

---

**Submitted by**

**Sylvia Ornelas, Planner, Santa Clara County**



**Chavez Memorial Walkway Sign**



**McDonnell Hall:** Photo Credits: Sylvia Ornelas



**Sign in front of Church**



**Our Lady of Guadalupe Church:** Photo Credits: Sylvia Ornelas



**Sign in front of Cesar Chavez House:** Photo Credits: Sylvia

**PHOTO COLLAGE OF  
HISTORIC RESOURCES  
in SAN JOSE.**

*Photos that represent  
historic locations and  
signs of San Jose.*

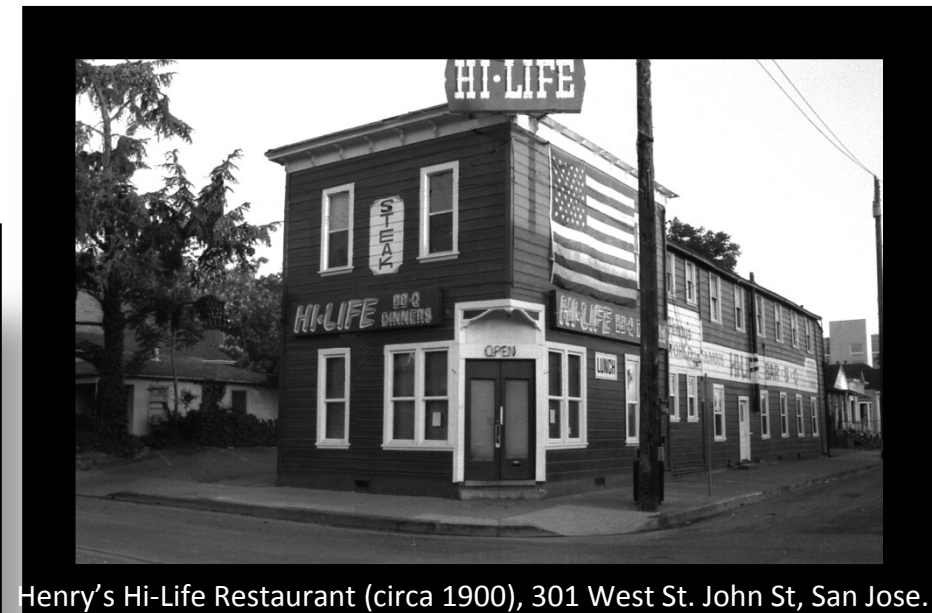
*Photos Left to Right:*

*Babe's Muffler Service on  
the Alameda, Andy's Pet  
Store, 1280 The  
Alameda, Henry's Hi-Life  
Restaurant, Towne 24  
Theaters, Del Monte  
Tower San Carlos, Diver  
Sign at Motel on S 1<sup>st</sup> St.*



Babe's Muffler Service, The Alameda, San Jose.

Andy's Pet Store, 1280 The Alameda, San Jose.

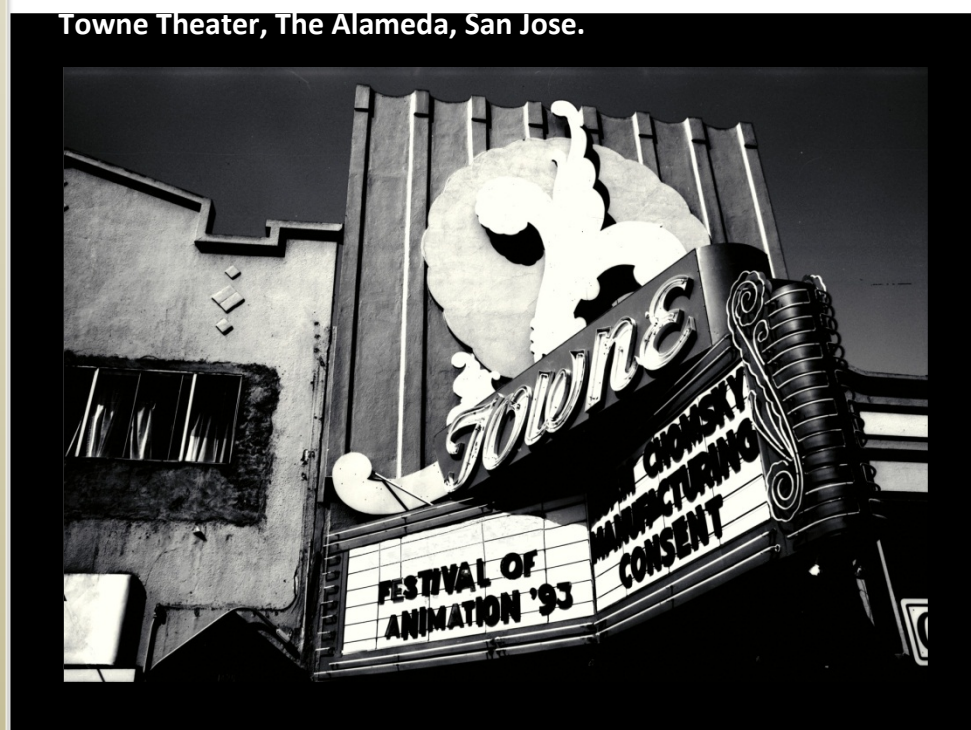
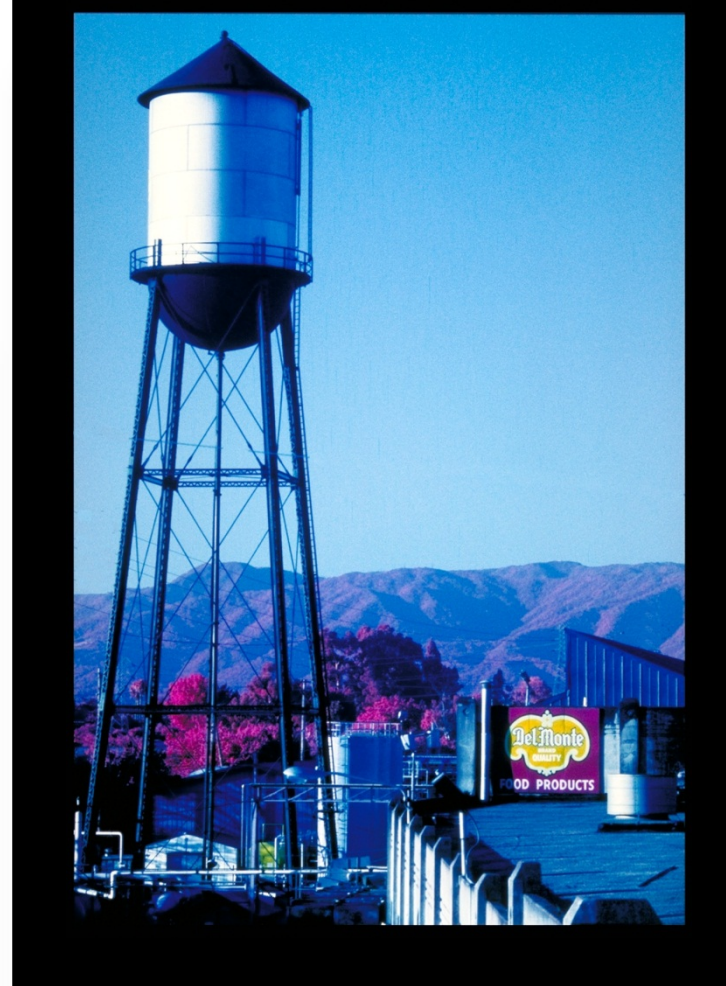


Henry's Hi-Life Restaurant (circa 1900), 301 West St. John St, San Jose.



Signs – Harts Department Store and Warehouse. San Jose

Del Monte Tower San Carlos, San Jose



Towne Theater, The Alameda, San Jose.



Signs – Diving Lady, City Center Motel Sign, S 1<sup>st</sup> Street, San Jose

Submitted by **GABRIEL  
IBARRA**, Architectural  
Historical Photographer

---

**HEADEN-INMAN HOUSE,  
SANTA CLARA**

*Circa 1913, Relocated  
1986*

*This 1913 house was part of the Headen estate and is a great example of the Arts and Crafts design movement popular at the time. Evidence of this design is seen in the sliding doors with beveled glass that separate the entrance from the living room, and in the fine woodwork throughout the house.*

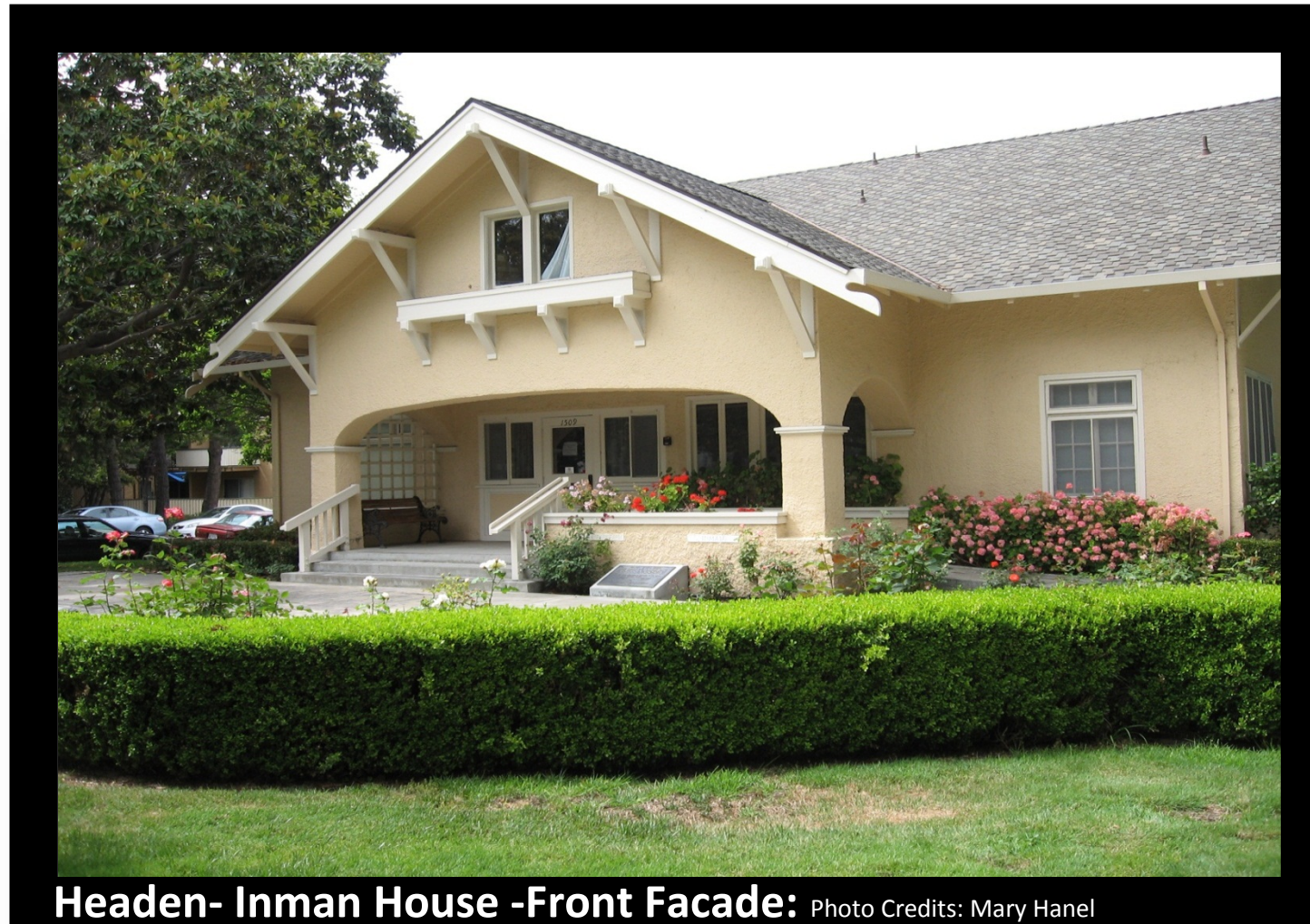
*(Excerpt from article in Examiner.Com)*

---

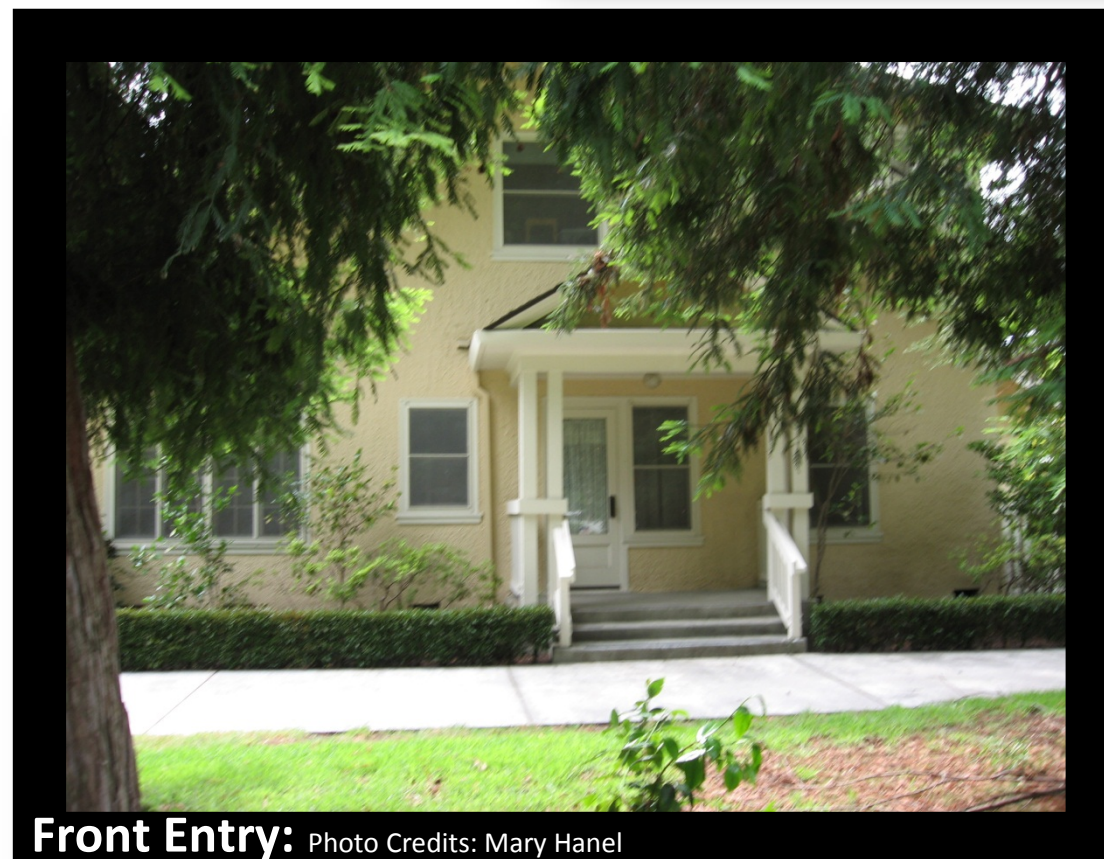
**Submitted by**

**Mary Hanel**

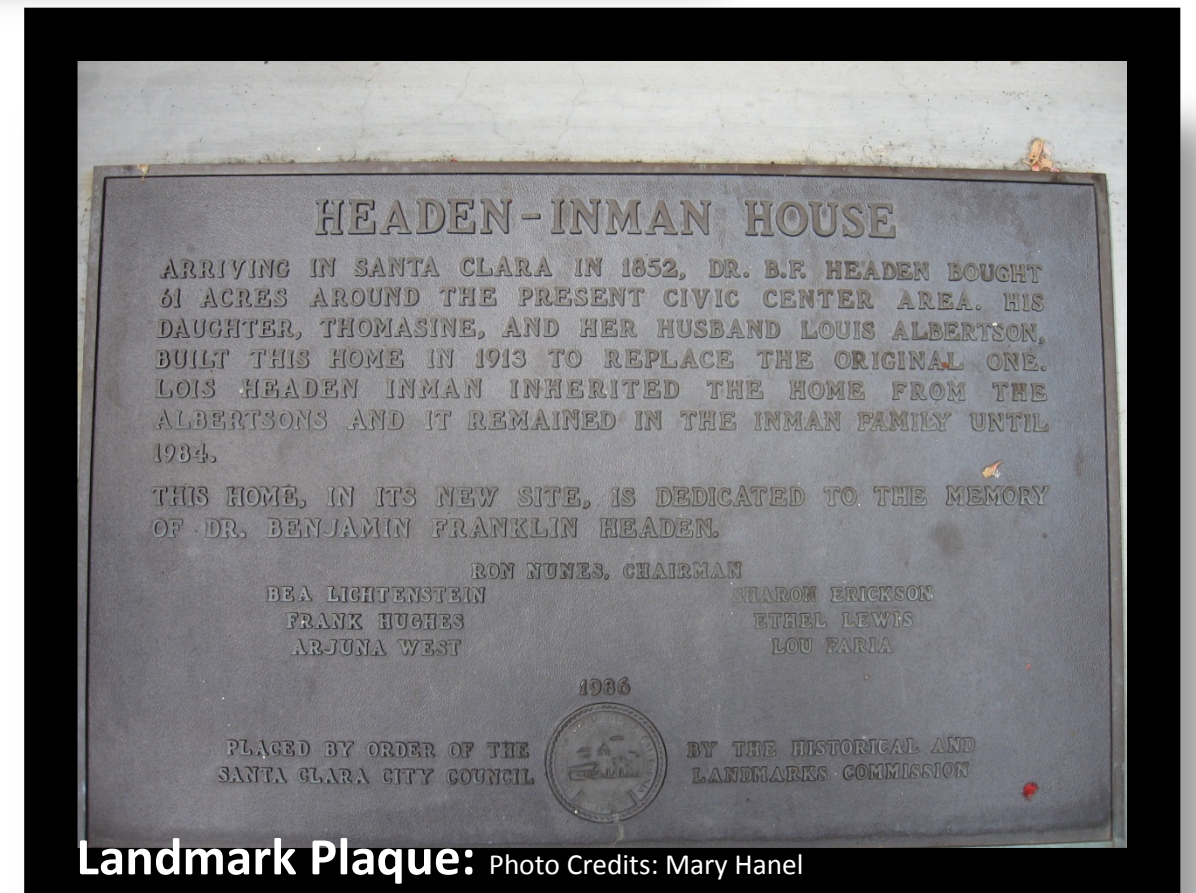
**(Resident of Santa Clara and the  
Local History Librarian for the  
Santa Clara City Library)**



**Headen- Inman House -Front Facade:** Photo Credits: Mary Hanel



**Front Entry:** Photo Credits: Mary Hanel



**Landmark Plaque:** Photo Credits: Mary Hanel

---

## **RHOADES RANCH, MORGAN HILL**

*Circa 1920, Preserved Landmark*

*Developed in the 1860s by rancher James F. Phegley, the property includes buildings spanning 150 years of occupation and agricultural use. Rhoades Ranch is significant for its association with Dr. Harold Thomas and the historical development of California's strawberry industry and for its association with Ira Osborne Rhoades, early twentieth century President, and Interim General Manager of the California Prune and Apricot Growers Association. The property is also significant for its architecture representative of construction, design and styles from the 1860s to the 1920s.*

---

**Submitted by**

**Sheila Giancola, Property Owner,  
Rhoades Ranch Landmark.**



**Rhoades Ranch:** Photo Credits: Franklin Maggi, Archives and Architecture



**Rhoades Ranch below Anderson Dam:** Photo Credits: Sheila Giancola



View from the living room looking into the dining room and entertainment room



**Restored Interior Views:** Photo Credits: Sheila Giancola

---

**MILPITAS GRAMMER  
SCHOOL, MILPITAS**

*Circa 1916, Restored 1990*

The [Greek Revival](#) building (listed on the NRHP as [Classical Revival](#)) was designed by Frank Delos Wolfe to replace an earlier two story [Victorian-style](#) wooden schoolhouse that burned down in 1912. The structure was built by the architect's brother, Theodore Linfield Wolfe, in 1916 and was restored by the City in 1990.

*(Excerpt from Wikipedia, 2013)*

---

**ALVISO ADOBE HOUSE AND  
PARK, MILPITAS**

*Circa 1837, Restored 2013*

The home of Jose Maria Alviso, early **alcade** (mayor) of the Pueblo de San Jose, stands as the only remaining example of the Monterey Colonial Style of architecture. Exterior restored by the City in 2013.

---

**Submitted by**

**Leslie Stobbe, Public Information  
Specialist, City of Milpitas**

---



**Milpitas Grammar School:** Photo Credits: City of Milpitas



**Restored Alviso Adobe Park:** Photo Credits: City of Milpitas



**Restored Alviso Adobe House:** Photo Credits: City of Milpitas.

---

**MONTALVO ARTS CENTER,  
SARATOGA**

*Circa 1912*

*Built by James Duval Phelan,  
California's first popularly  
elected U.S Senator, Villa  
Montalvo was his favorite  
home and a center of artistic,  
political and social life in  
Northern California.*

*Designed in the Mediterranean  
Style of Architecture, the  
buildings and its surroundings  
have been preserved, restored  
and rehabilitated by the  
Montalvo Arts Society.*

---

**Submitted by**

**Kelly Hudson, Deputy Director,  
Montalvo Arts Society**



**Villa Montalvo:** Photo Credits: Montalvo Arts Society



**Love Temple after Restoration:** Photo Credits: Montalvo Arts



**BEFORE 2012- Belvedere Temple:** Photo Credits: Montalvo



**AFTER 2012 - Belvedere Temple:** Photo Credits: Montalvo Arts

**THE SEMERIA CASTLE, LOS ALTOS**

*Circa 1928, Restored 2013*

*Built as a home for Henry and Rose Semeria, "The Semeria Castle" is significant as a rare local example of the Norman Revival style architecture with Mediterranean and California's Spanish Mission architectural elements in Santa Clara County.*



**Semeria Castle- Front View** Photo Credits: William Kostura. Architectural Historian



**Semeria Castle- Rear View** Photo Credits: William Kostura. Architectural Historian



**Interior Views** Photo Credit: William Kostura

**Submitted by**  
**Maryam Eshghipour, Property**  
**Owner of Landmark**

---

**HAMMERSKJOLD HOUSE,  
STANFORD**

*Circa 1900, Rehabilitated  
2012.*

*Built as faculty house, the  
house was converted to a  
fraternity house in 1907.*

*The house represents a high  
style example of Neoclassical  
style of architecture and was  
rehabilitated along with  
other Row Houses on Stanford  
campus in 2012.*

---

**Submitted by**

**Sapna Marfartia, Associated Architect,  
Stanford University**



**Hammerskjold House** Photo Credits: Stanford University



**Front Entry** Photo Credit: Stanford University



**Side Views** Photo Credit: Stanford University



**Rehabilitation 2013** Photo Credits: Stanford University

**H.P DYER HOUSE,  
SARATOGA**

*Circa 1915, Renovated 2012.*

*The rustic stone building was built as a retreat home for Harold Parker Dyer, a prominent businessman in the sugar beet industry.*

*The house is significant as a representation of the rustic Craftsman style retreat home. The style is characterized by the intensive use of hand labor and the rejection of regularity and symmetry, reflecting its connection with the Arts and Crafts movement. The house was renovated by Youth Science Institute (YSI) in 2012.*

**Submitted by**

**Darek Przygoda, HHC Commissioner,  
Santa Clara County**



**H.P Dyer House** Photo Credit: Darek Przygoda



**Rear View** Photo Credit: Darek Przygoda



**Renovated Interior** Photo Credits: Darek Przygoda



**Renovated Front Entry** Photo Credit: Darek Przygoda

---

**NEW ALMADEN  
HISTORIC DISTRICT**

*Began in 1845*

*The oldest and most productive quicksilver mine in Santa Clara County, the National Landmark historic district is one of the best preserved neighborhoods in Santa Clara County.*

---

*Submitted by*

**Erika Murphy, Resident, New Almaden Neighborhood.**



**Sign at New Almaden:**

Photo Credits: Erika Murphy Photos



**Sign at New Almaden:**

Photo Credits: Erika Murphy Photos



**Street Views of New Almaden Historic District**