

24001 Stevens Creek Boulevard
Cupertino, CA 95014

PRSR STD
US POSTAGE
PAID
CORNERSTONE



2024-6500-01

Reclaiming Permanente Quarry



We Want to Hear From You

Heidelberg Materials is working with state and local agencies to restore the Permanente Quarry site, which has operated in the hills of Santa Clara County for most of the last century. The proposed Reclamation Plan Amendment (RPA) details the plan to restore the site.

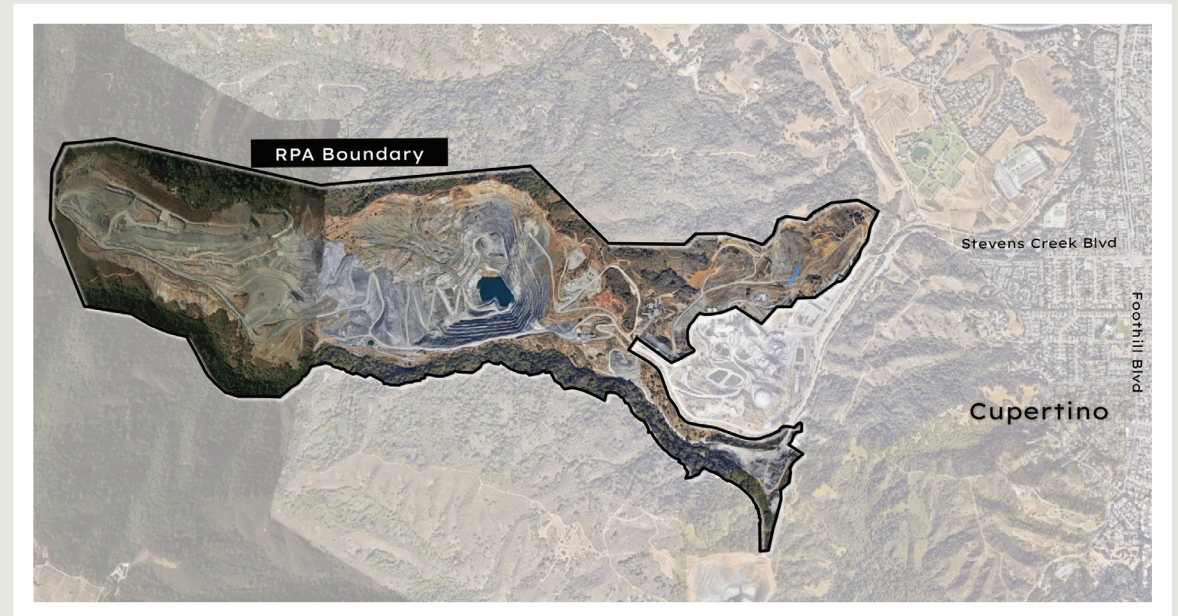
Join Us at a Community Meeting or
Visit PermanenteQuarry.com

Join the Conversation on Reclaiming Permanente Quarry

The proposed Reclamation Plan Amendment (RPA) details the plan to restore the site. The RPA covers 921 acres of the 3,510-acre property. Through the RPA, Heidelberg Materials will work to restore the site by grading steep areas for stability, backfilling the quarry pit, covering and closing the quarry pit and storage areas, and revegetating to prevent wind and water erosion.

Recently, Heidelberg Materials announced it would permanently stop cement kiln operations on site, meaning all quarrying from the pit will cease. The company will continue aggregate operations into the foreseeable future.

We're excited to work with neighbors and stakeholders on restoring the site. Join us at an upcoming community meeting and at PermanenteQuarry.com to learn more.



**Come to a
Community
Meeting:**

Thursday, June 20th: 6 pm to 8 pm

Cupertino Community Hall, 10350 Torre Avenue

Saturday, June 22nd: 10 am to 12 pm

Quinlan Community Center, 10185 N Stelling Road



Go to PermanenteQuarry.com to learn more, provide your input and RSVP for a community meeting.