

# Permanente Quarry - Lehigh/Hanson Reclamation Plan Amendment



## Public Scoping Session

August 30, 2011





# Agenda

## I. Introductions and Meeting Format

Rob Eastwood, Senior Planner, Santa Clara County

## II. Project Overview

Marina Rush, Project Planner, Santa Clara County

## III. CEQA Process

## IV. Public Comments

Send comments to:  
County of Santa Clara Planning Office  
Attn: Marina Rush  
70 W. Hedding St., East Wing, 7<sup>th</sup> Floor  
San Jose, CA 95110

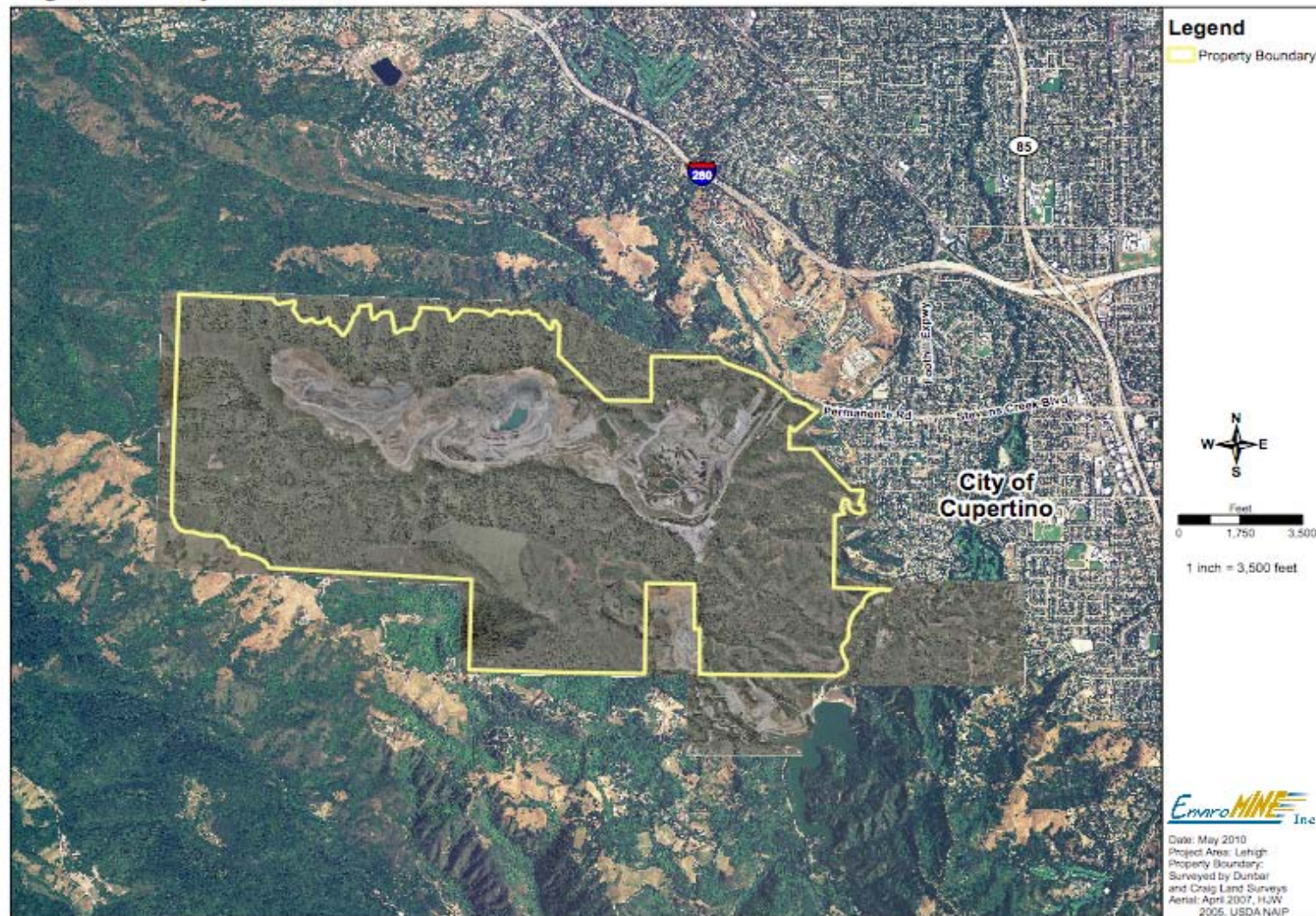
[permanentequarry@pln.sccgov.org](mailto:permanentequarry@pln.sccgov.org)



# Permanente Quarry - Lehigh Cement, Inc. Reclamation Plan Amendment Vicinity Map



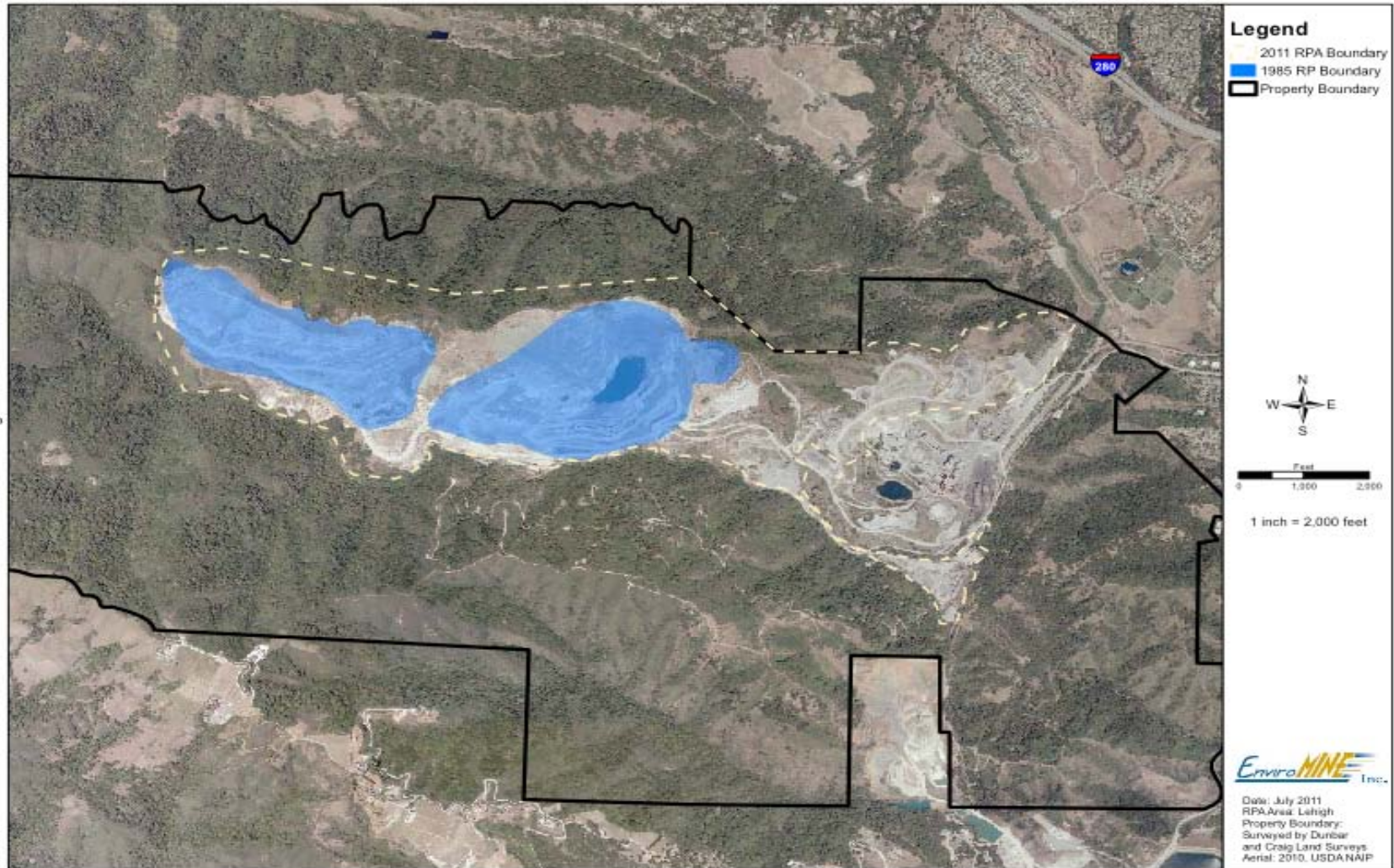
Figure 2 Project Location





# Permanente Quarry - Lehigh Cement, Inc. Reclamation Plan Amendment Project Boundary

Figure 1.0-5 Reclamation Plan Boundaries

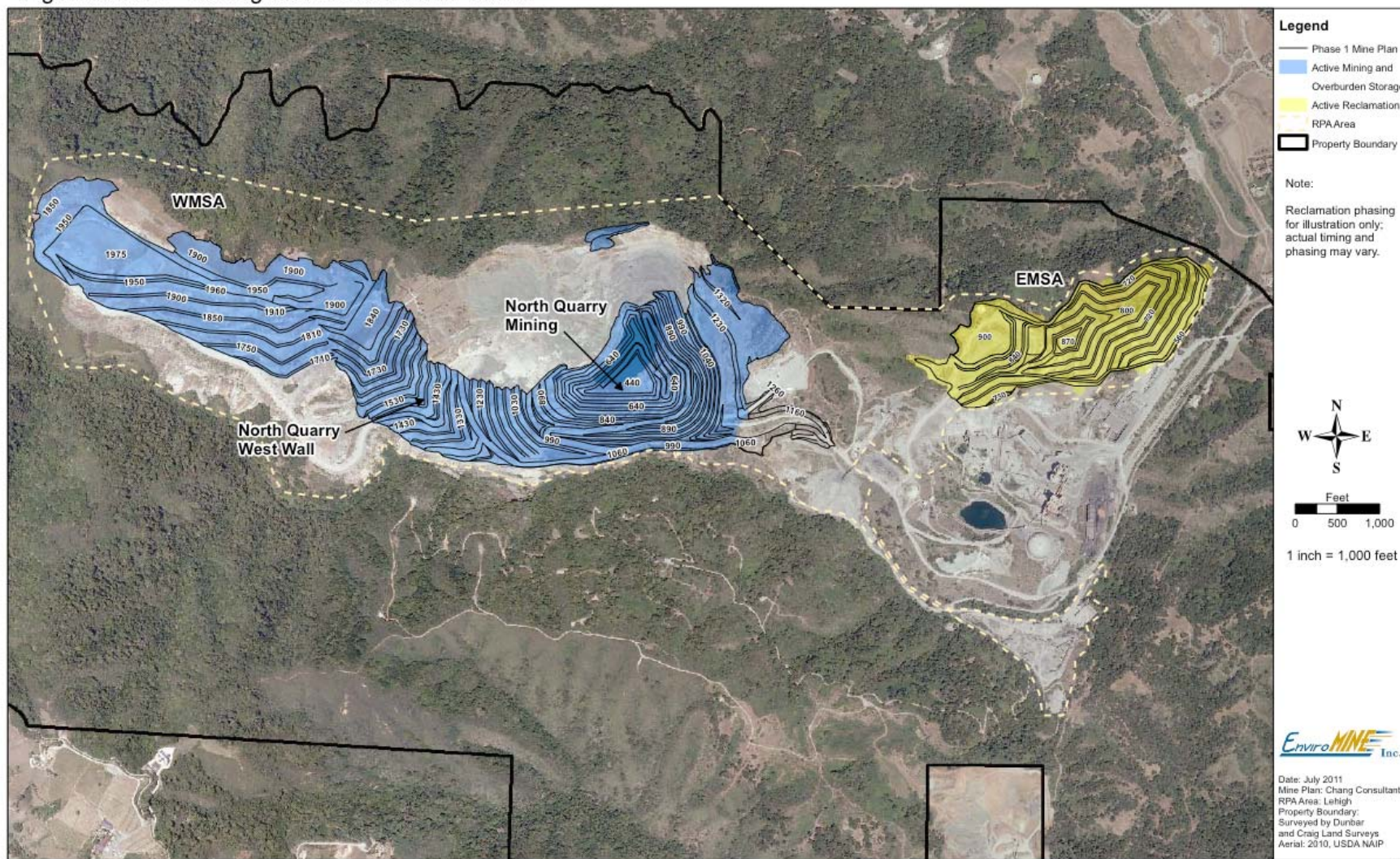




# Permanente Quarry - Lehigh Cement, Inc. Reclamation Plan Amendment Phasing Plan



Figure 3.15-2 Mining and Reclamation Phase 1

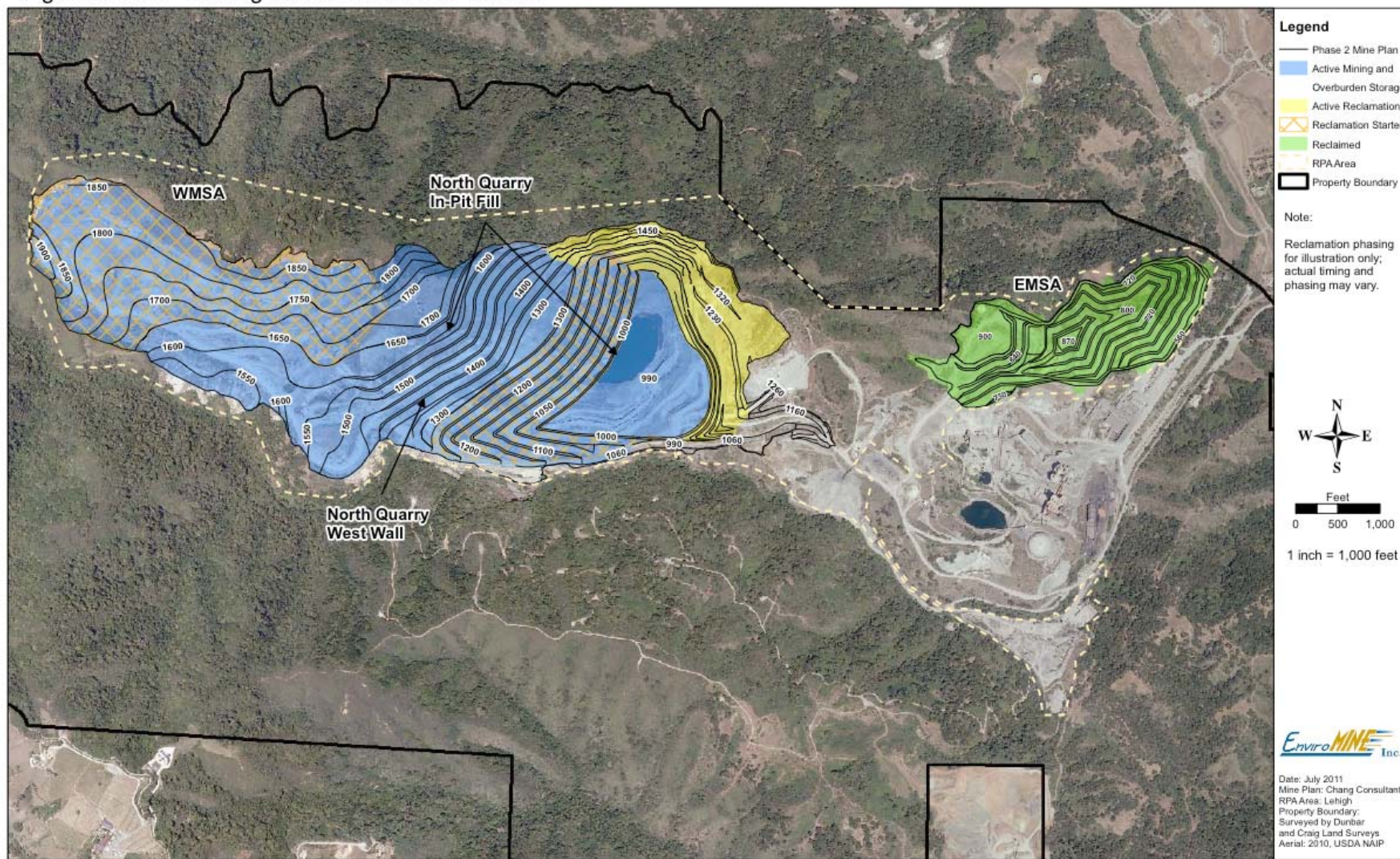




# 



Figure 3.15-3 Mining and Reclamation Phase 2

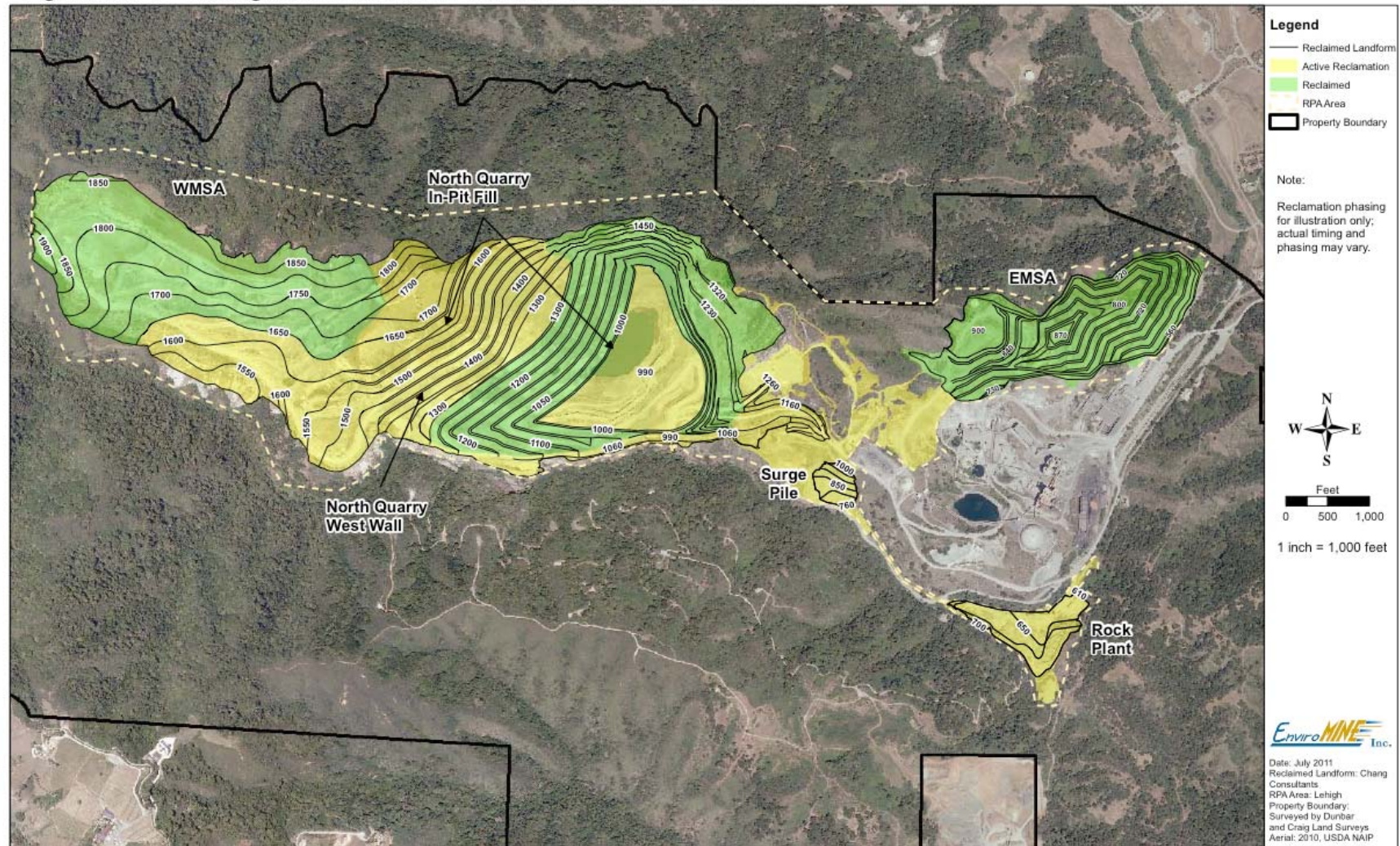




# 



Figure 3.15-4 Mining and Reclamation Phase 3 / Final Reclamation

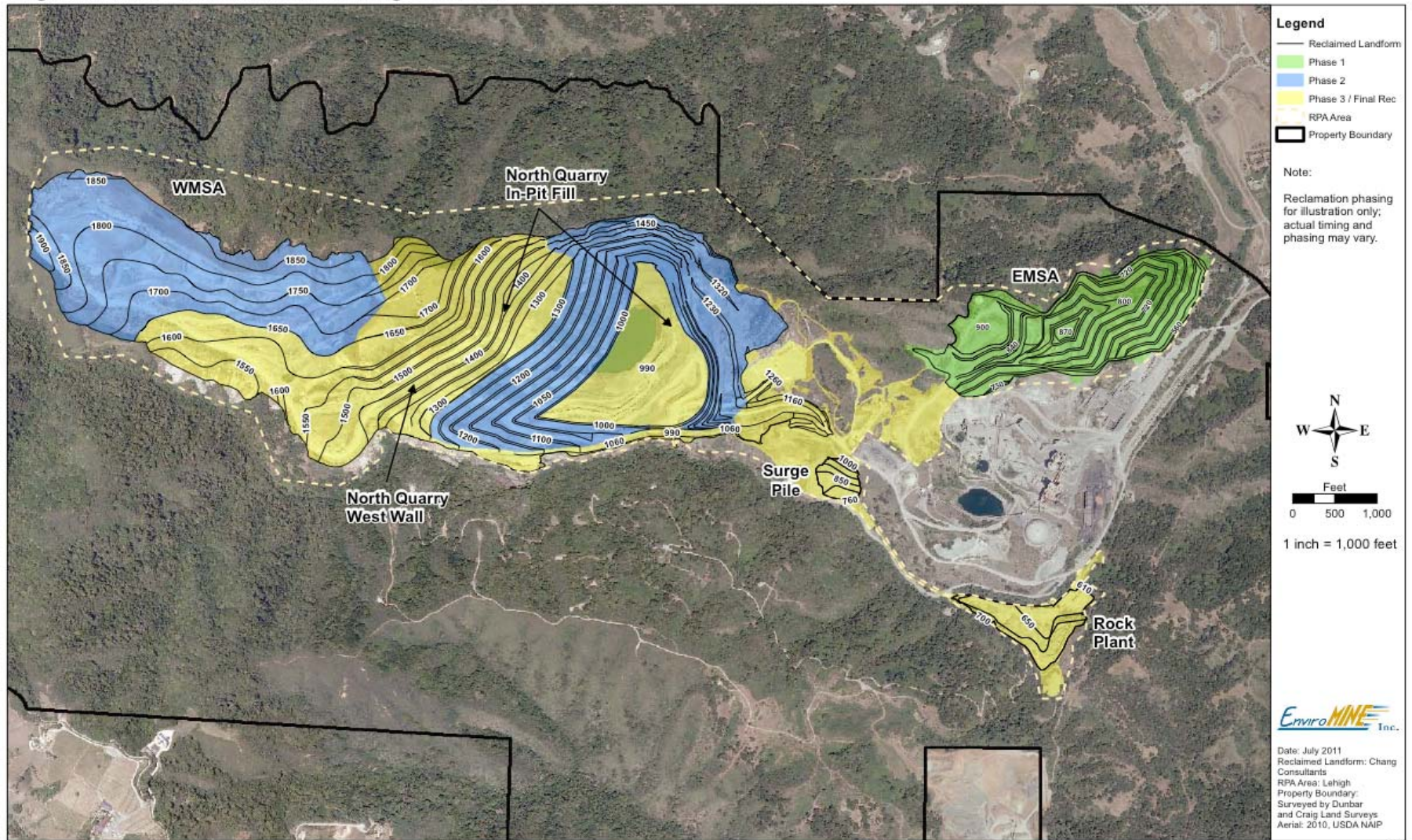




# 



Figure 3.15-8 Reclamation Phasing Overview





# EIR Process



- I. Notice of Preparation**  
**Thirty-day Public Review and Comment Period - Ends September 26, 2011**
- II. EIR Scoping Meeting**
- III. Draft EIR Prepared**
- IV. Draft EIR Distributed for Public Review**  
**Sixty-day Public Review and Comment Period**
- V. Planning Commission Hearing - Estimated February 2012**  
**DEIR Comments Received**
- VI. Responses to Comments - Prepare Final EIR**
- VII. Planning Commission Hearing - Estimated March 2012**  
**Certification of FEIR and consider approval of Reclamation Plan**





# Notice of Preparation

Public Comments Requested by September 26, 2011

Send to:

County of Santa Clara  
Office of Planning and Development  
Marina Rush  
70 West Hedding Street, East Wing, 7th Floor  
San Jose, CA 95110

[permanentequarry@pln.sccgov.org](mailto:permanentequarry@pln.sccgov.org)



We look forward to your  
comments!

