

PHILIPPE AUGER, R.C.E. 21500-EXPIRES 9-30-19  
DANIEL NUNES, R.C.E. 76448-EXPIRES 12-31-20, L.S. 9212-EXPIRES 09-30-19

PLANNING • LAND SURVEYING • CIVIL ENGINEERING • CONSTRUCTION STAKING

**MISSION ENGINEERS, INC.**

RESPONSIVE, RELIABLE RESULTS SINCE 1953  
2355 De La Cruz Blvd., Santa Clara, California 95050  
Ph: (408) 727-8262 FAX: (408) 727-8285 E-mail: missionengineersinc.com

TOPOGRAPHIC MAP  
FOR ARNALDO MATOS  
APN 612-14-053  
GARCAL DRIVE, SAN JOSE  
IN SANTA CLARA COUNTY, CALIFORNIA

REVISIONS	
DATE	DESCRIPTION
06-18-19 <td>CH'D</td>	CH'D
06-18-19 <td>JS ME16</td>	JS ME16
06-18-19 <td>JS ME16</td>	JS ME16
06-18-19 <td>JS ME16</td>	JS ME16
06-18-19 <td>JS ME16</td>	JS ME16
06-18-19 <td>JS ME16</td>	JS ME16
06-18-19 <td>JS ME16</td>	JS ME16
06-18-19 <td>JS ME16</td>	JS ME16
06-18-19 <td>JS ME16</td>	JS ME16
06-18-19 <td>JS ME16</td>	JS ME16

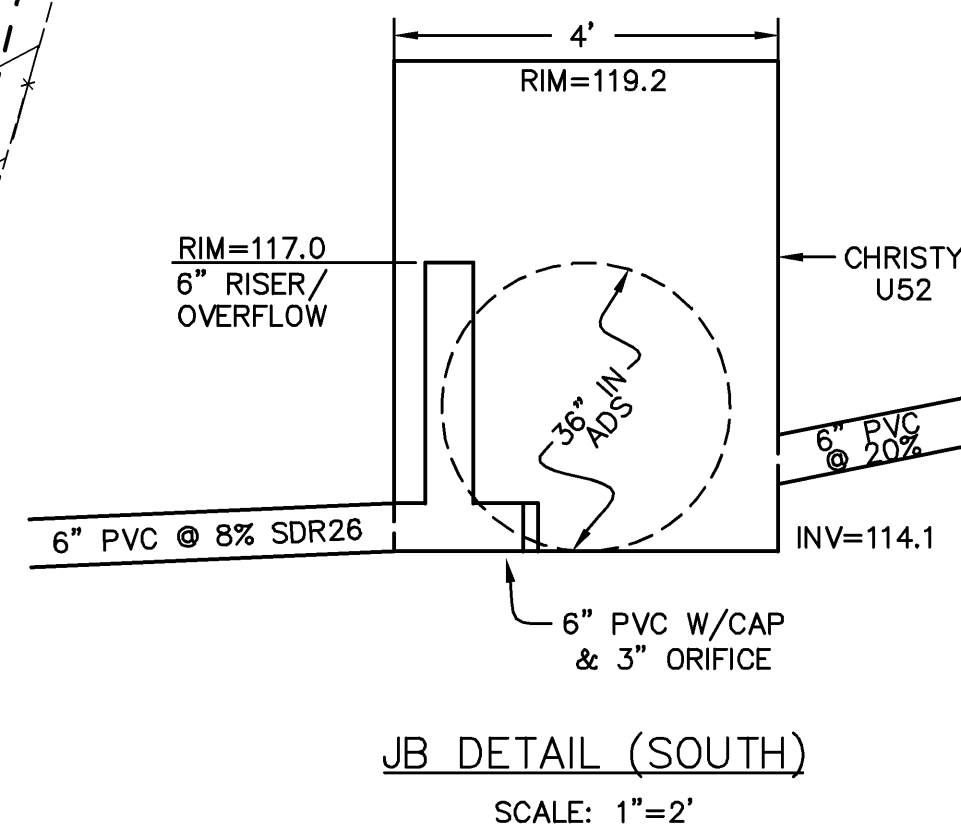
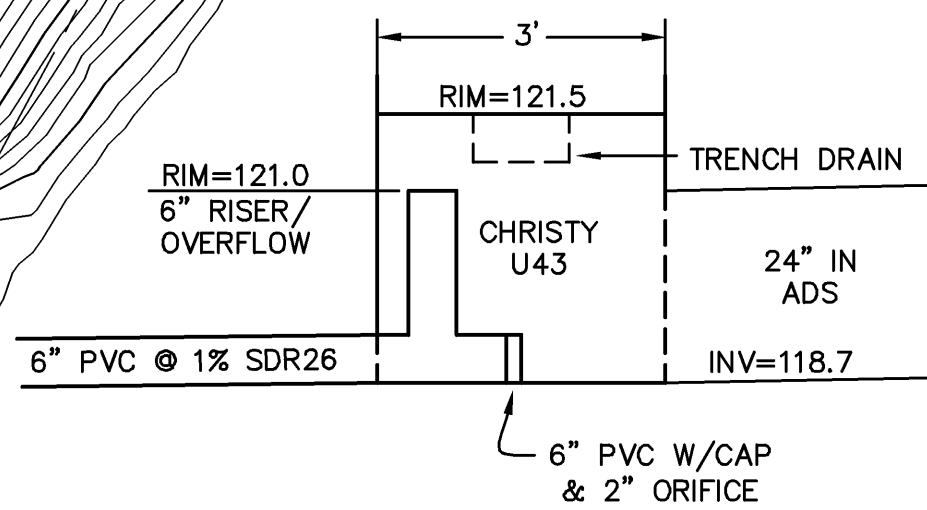
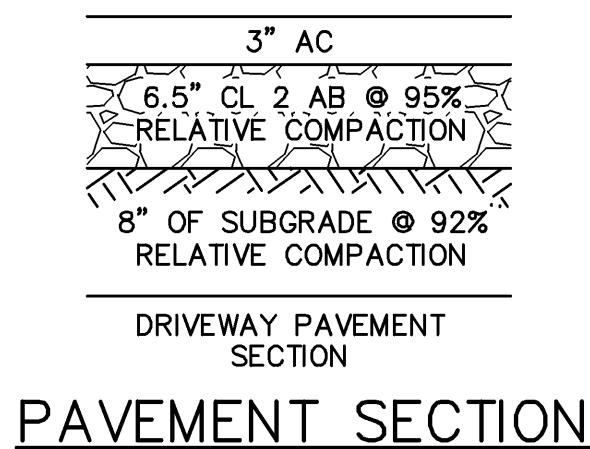
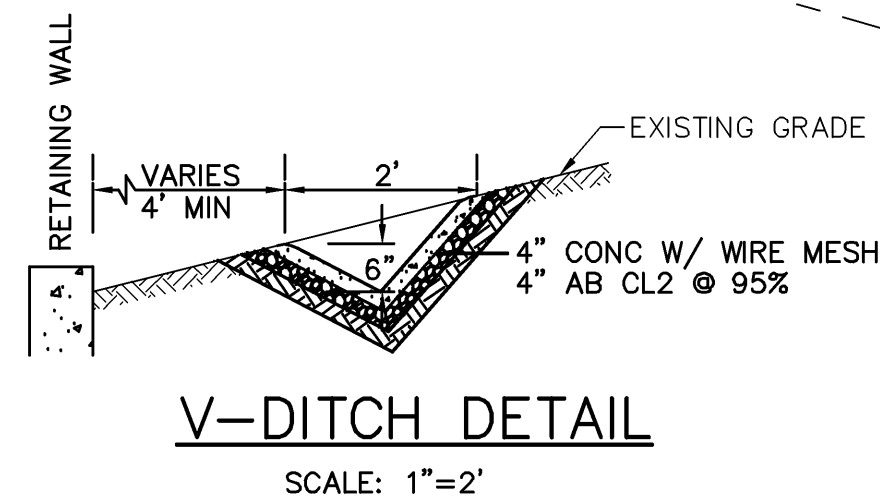
SCALE	1"=20'
DATE	06-18-19
DWN	JS ME16
CH'D	JS ME16
JOB NO.	16052
DWG. NO.	L-14757
SHEET	C2
OF 9 SHEETS	

APPROVED FOR ISSUANCE REFER TO ENCROACHMENT AND/OR CONSTRUCTION PERMIT AND PLAN COVER SHEET FOR SPECIAL CONDITIONS AND PERMIT NUMBERING.



NOTES:

- CONTRACTOR SHALL CONTACT U.S.A. AT LEAST 48 HOURS PRIOR TO EXCAVATING IN ANY AREA WHERE UNDERGROUND FACILITIES ARE LOCATED. PHONE (800)642-2444.
- THE EXISTENCE, LOCATION AND ELEVATION OF ANY UNDERGROUND UTILITIES ARE SHOWN IN A GENERAL WAY ONLY. IT WILL BE THE RESPONSIBILITY AND DUTY OF THE CONTRACTOR TO MAKE FINAL DETERMINATIONS AS TO THE EXISTENCE, LOCATION AND ELEVATION OF ALL UTILITIES.
- TOPOGRAPHY PROVIDED BY T.K.M LAND SURVEYORS, DATED 01-09-14
- TEMPORARY BENCHMARK (TBM):  
MAG NAIL IN GARCAL DRIVE NORTH OF WESTERLY MOST CORNER AS SHOWN HEREON.  
ASSUMED ELEVATION = 106.60



APPLICANT: ARNALDO MATOS

ROAD NAME: GARCAL DR.

COUNTY FILE NO.: 2018-48805

GRADING & DRAINAGE  
FOR ARNALDO MATOS  
APN 612-14-053  
GARCAL DRIVE, SAN JOSE  
IN SANTA CLARA COUNTY, CALIFORNIA

REVISIONS

DATE	BY	DESCRIPTION
12/4/2020	CH/KD	ADD DWY

SCALE 1"=20'

DATE 06-18-19

DWN JS ME16

CH/KD

JOB NO. 16052

DWG. NO. L-14757

SHEET

C3

OF 9 SHEET

MISSION ENGINEERS, INC.

PLANNING • LAND SURVEYING • CIVIL ENGINEERING • CONSTRUCTION STAKING

RESPONSIVE, RELIABLE RESULTS SINCE 1953

2355 De La Cruz Blvd., Santa Clara, California 95050

Ph: (408) 727-8262 FAX: (408) 727-8285 E-mail: missionengineersinc.com

PHILIPPE AUGER, R.C.E. 21500-EXPIRES 9-30-19  
DANIEL NUNES, R.C.E. 76448-EXPIRES 12-31-20, L.S. 9212-EXPIRES 09-30-19

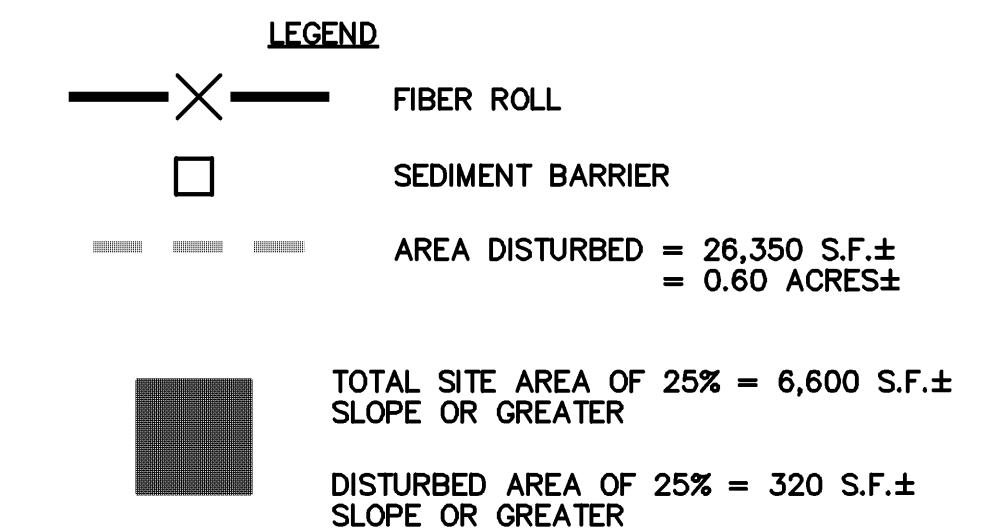


1. ALL GRADING WORK BETWEEN OCTOBER 15TH AND APRIL 15TH IS AT THE DISCRETION OF THE SANTA CLARA COUNTY BUILDING OFFICIAL.

2. A. THE OWNER/OWNER'S CONTRACTOR SHALL INSTALL AND MAINTAIN THROUGHOUT THE DURATION OF CONSTRUCTION AND UNTIL THE ESTABLISHMENT OF PERMANENT STABILIZATION AND SEDIMENT CONTROL WITHIN THE SANTA CLARA COUNTY MAINTAINED ROAD RIGHT OF WAY AND ANY PORTION OF THE SITE WHERE STORM WATER RUN-OFF IS DIRECTLY FLOWING INTO THE SANTA CLARA COUNTY MAINTAINED ROAD RIGHT OF WAY BEST MANAGEMENT PRACTICES (BMPs) TO PREVENT CONSTRUCTION MATERIALS, EXCAVATED MATERIALS, WASTE MATERIALS, AND SEDIMENT CAUSED BY EROSION FROM CONSTRUCTION ACTIVITIES ENTERING THE STORM WATER SYSTEM/STORMWATER DRAINAGE SYSTEM. THE FOLLOWING BMPs SHALL INCLUDE, BUT NOT LIMITED TO, THE FOLLOWING PRACTICES APPLICABLE TO THE PUBLIC ROAD AND EXPRESSWAY FACILITIES:

1. REDUCTION OF POLLUTANTS IN STORM WATER DISCHARGES FROM THE CONSTRUCTION SITE AND THE CONTRACTOR'S MATERIAL AND EQUIPMENT LAYDOWN/STAGING AREAS
2. PREVENTION OF TRACKING OF MUD, DIRT AND CONSTRUCTION MATERIALS ONTO PUBLIC ROAD RIGHT OF WAY.
3. PREVENTION OF DISCHARGE OF WATER RUNOFF DURING DRY AND WET WEATHER CONDITIONS ONTO PUBLIC ROAD RIGHT OF WAY.

B. THE OWNER/OWNER'S CONTRACTOR SHALL ENSURE THAT ALL TEMPORARY CONSTRUCTION FACILITIES, INCLUDING BUT NOT LIMITED TO CONSTRUCTION MATERIALS, DELIVERIES, HAZARDOUS AND NON HAZARDOUS MATERIAL STORAGE, EQUIPMENT, TOOLS, PORTABLE TOILETS, CONCRETE WASHOUT, GARBAGE CONTAINERS, LAYDOWN YARDS, SECONDARY CONTAINMENT AREAS, ETC. ARE LOCATED WITHIN THE SANTA CLARA COUNTY MAINTAINED ROAD RIGHT OF WAY AND ANY PORTION OF THE SITE WHERE STORM WATER RUN-OFF IS DIRECTLY FLOWING INTO THE SANTA CLARA COUNTY MAINTAINED ROAD RIGHT OF WAY SHALL HAVE SEASONALLY APPROPRIATE BMPs INSTALLED AND MAINTAINED AT ALL TIMES.



APPROVED FOR ISSUANCE REFER TO  
ENCROACHMENT AND/OR  
CONSTRUCTION PERMIT AND PLAN  
COVER SHEET FOR SPECIAL  
CONDITIONS AND PERMIT NUMBERING.

APPLICANT: ARNALDO MATOS

ROAD NAME: GARCAL DR.

COUNTY FILE NO.: 2018-48805

PHILIPPE AUGER, R.C.E. 21500-EXPIRES 9-30-19  
DANIEL NUNES, R.C.E. 76449-EXPIRES 12-31-20, L.S. 9212-EXPIRES 09-30-19

PLANNING • LAND SURVEYING • CIVIL ENGINEERING • CONSTRUCTION STAKING

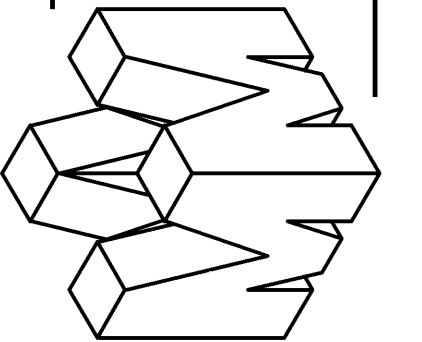
---

# MISSION ENGINEERS, INC.

---

*RESPONSIVE, RELIABLE RESULTS SINCE 1953*

2355 De La Cruz Blvd., Santa Clara, California 95050  
Ph: (408) 727-8262 FAX: (408) 727-8285 E-mail: [mission@missionengineersinc.com](mailto:mission@missionengineersinc.com)



EROSION CONTROL PLAN  
FOR ARNALDO MATOS  
APN 612-14-053  
GARCAL DRIVE, SAN JOSE  
IN SANTA CLARA COUNTY, CALIFORNIA

REVISIONS	
DATE	BY CHK'D DESCRIPTION
	△
	△
	△
	△

SCALE	1"=20'
DATE	06-18-19
DWN	JS ME16
CHK'D	
JOB NO.	16052
DWG. NO.	L- 14757

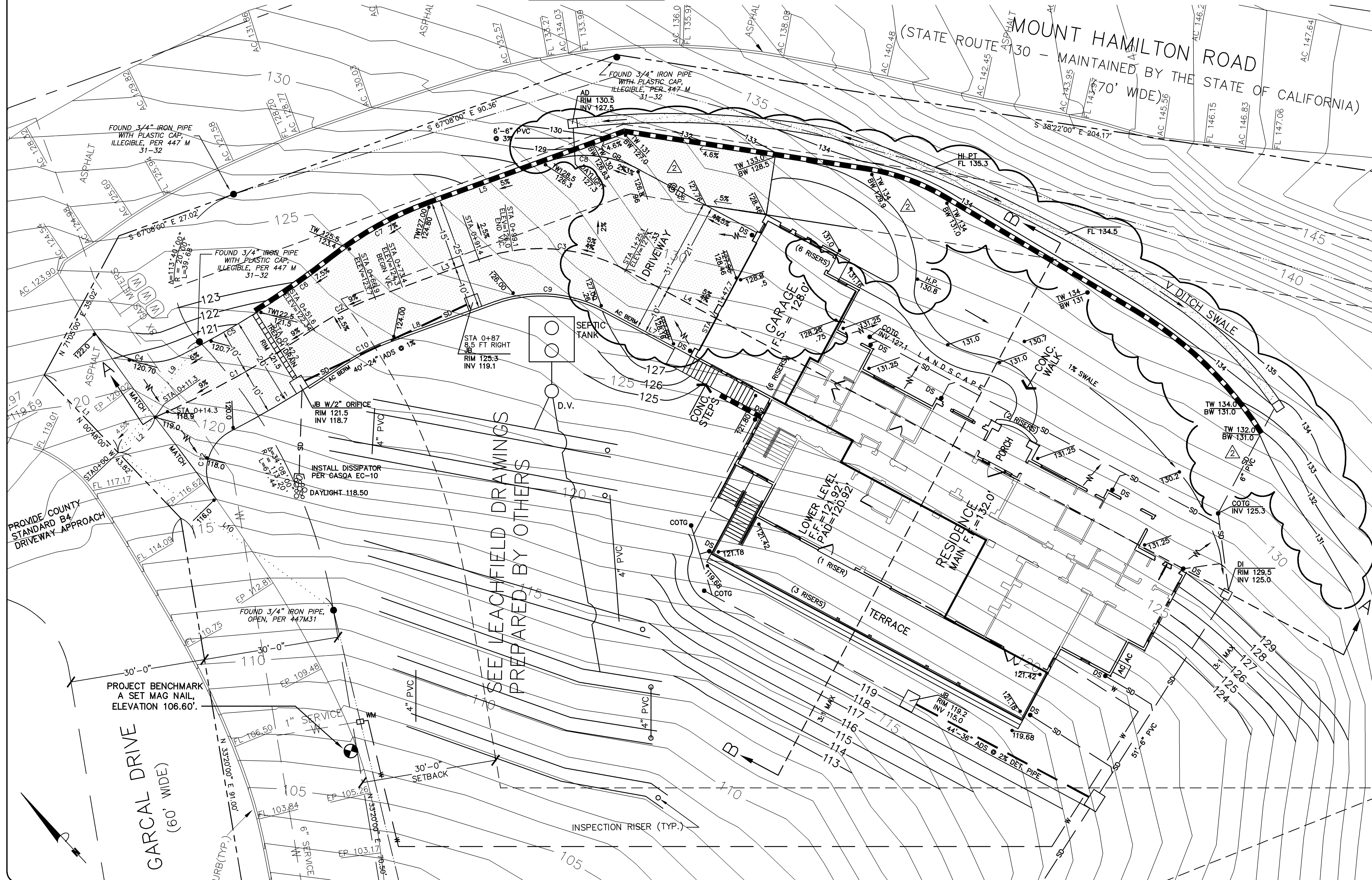
SHEET
C4
OF 9 SHEETS



1. SEE SHEET C2 FOR ADDITIONAL BOUNDARY CONTROL.
2. DRIVEWAY MUST BE ALL WEATHER DRIVEWAY CAPABLE OF SUPPORTING 75,000 POUNDS.

NUMBER	DELTA ANGLE	RADIUS	ARC LENGTH
C1	10°58'38"	210.00	40.23
C2	14°38'57"	60.00	15.34
C3	48°11'06"	40.00	55.64 28.0±
C4	84°07'40"	15.00	22.02
C5	05°27'54"	200.00	19.08
C6	08°03'40"	200.00	21.16
C7	18°18'51"	75.00	23.97
C8	50°15'43"	25.00	21.93
C9	48°11'06"	30.00	25.23
C10	14°38'57"	50.00	12.78
C11	07°17'13"	220.00	27.98
C12	101°07'53"	10.00	17.65

NUMBER	DIRECTION	DISTANCE
L1	S 00°48'00" E	23.71'
L2	S 89°12'00" W	11.33'
L3	N 67°08'00" W	24.52'
L4	N 18°56'54" W	22.65'
L5	S 67°08'00" E	27.69'
L6	S 18°56'54" E	29.00'
L7	N 18°56'54" W	21.65'
L8	N 67°08'00" W	24.52'
L9	S 78°54'59" W	30.49'
L10	N 11°03'08" W	59.02'



APPROVED FOR ISSUANCE REFER TO  
ENCROACHMENT AND/OR  
CONSTRUCTION PERMIT AND PLAN  
COVER SHEET FOR SPECIAL  
CONDITIONS AND PERMIT NUMBERING.

PHILIPPE AUGER, R.C.E. 21500—EXPIRES 9-30-21

PHILIPPE AUGER, R.C.E. 21500-EXPIRES 9-30-21  
DANIEL NUNES, R.C.E. 76449-EXPIRES 12-31-20, L.S. 9212-EXPIRES 09-30-21

PLANNING • LAND SURVEYING • CIVIL ENGINEERING • CONSTRUCTION STAKING

MISSION ENGINEERS, INC.

RESPONSIVE, RELIABLE RESULTS SINCE 1953

**RESPONSIVE, RELIABLE RESULTS SINCE**  
2355 De La Cruz Blvd.. Santa Clara, California 95050

3333 De La Cruz Blvd., Santa Clara, California 95050  
Ph: (408) 727-8262 FAX: (408) 727-8285 E-mail: [mission@missionengineersinc.com](mailto:mission@missionengineersinc.com)

DRIVEWAY CONTROL/LAYOUT PLAN

FOR ARNALDO MATOS

APN 612-14-053

GARCAL DRIVE, SAN JOSE  
IN SANTA CLARA COUNTY, CALIFORNIA

## REVISIONS

DATE	BY CH'KD	DESCRIPTION
7/10		① ADD NOTE
12/4 2020		② ADD DWY
		△
		△
		△
		△

SCALE 1"=10'

DATE	06-18-19
------	----------

DWN	JS ME16
-----	---------

CH'KD

JOB NO. 16052

DWG. NO. L-14757

SHEET

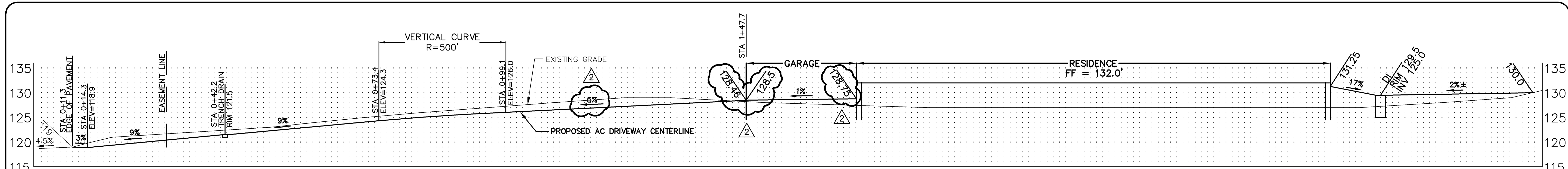
105

15

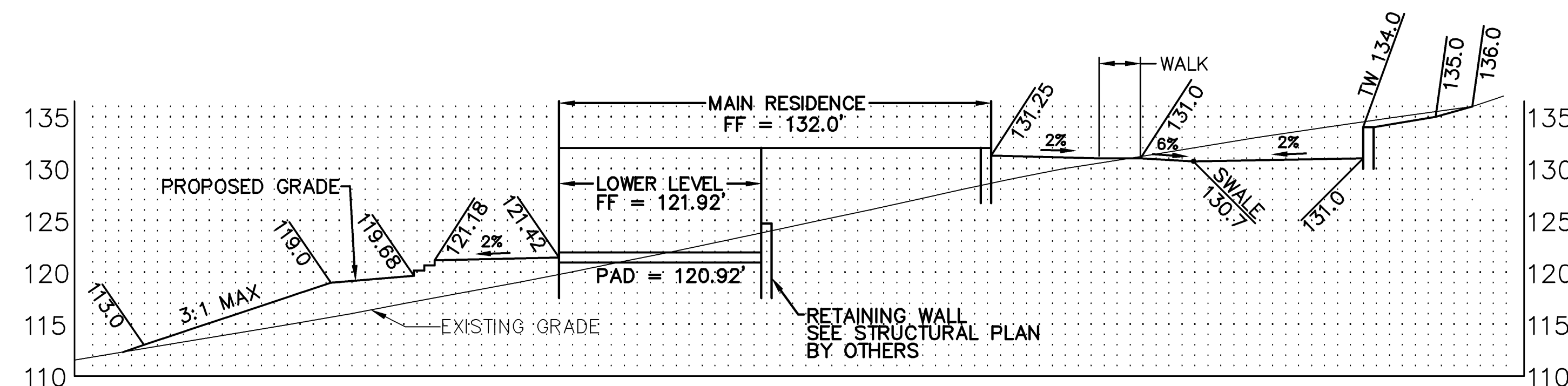
1

OF 9 SHEETS

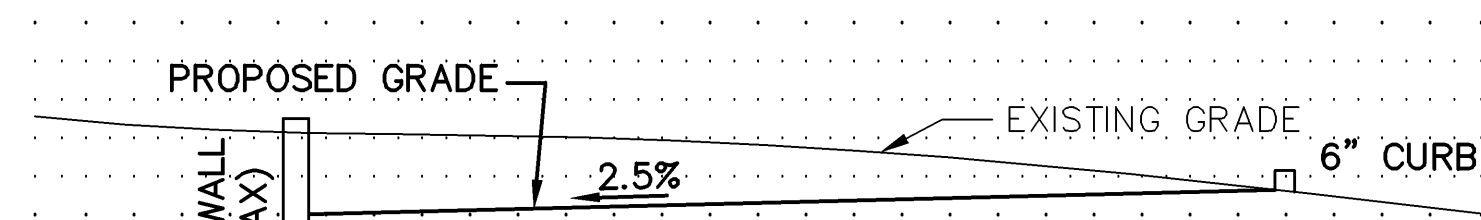




PROFILE A-A  
SCALE: 1"=10'



PROFILE B-B  
SCALE: 1"=10'



TYPICAL DRIVEWAY SECTION  
SCALE: 1"=5'

**DRIVEWAY APPROACH**  
Connection to Private Road

\* Maximum grade as per Fire Marshal

**NOTES**

- (1) Culvert plus swale shall accommodate maximum flow. Minimum culvert size to be 12". Culvert shall extend 1' beyond each toe of shoulder. Provide headwalls and/or rip-rap as required. C.M.P. to be not less than 14 gauge.
- (2) Culvert may be omitted where no roadside ditch exists with written approval of County Surveyor.
- (3) Driveway approach base of paving to be same as or better than ultimate private road base of pavement.
- (4) See Driveway section (this manual) for more information.

Approved: <i>[Signature]</i> Date: _____ Manager / County Surveyor		COUNTY OF SANTA CLARA ENVIRONMENTAL MANAGEMENT / GENERAL SERVICES AGENCY	
No.	Revision	Date	DRIVEWAY APPROACH (PRIVATE ROAD)
			SD 4

APPROVED FOR ISSUANCE REFER TO ENCROACHMENT AND/OR CONSTRUCTION PERMIT AND PLAN COVER SHEET FOR SPECIAL CONDITIONS AND PERMIT NUMBERING.

PHILIPPE AUGER, R.C.E. 21500-EXPIRES 9-30-19  
DANIEL NUNES, R.C.E. 76448-EXPIRES 12-31-20, L.S. 9212-EXPIRES 09-30-19

PLANNING • LAND SURVEYING • CIVIL ENGINEERING • CONSTRUCTION STAKING

**MISSION ENGINEERS, INC.**

RESPONSIVE, RELIABLE RESULTS SINCE 1953

2355 De La Cruz Blvd., Santa Clara, California 95050  
Ph: (408) 727-8262 FAX: (408) 727-8285 E-mail: missionengineersinc.com

SECTIONS & DETAILS  
FOR ARNALDO MATOS  
APN 612-14-053  
GARCAL DRIVE, SAN JOSE  
IN SANTA CLARA COUNTY, CALIFORNIA

**REVISIONS**

DATE	BY	DESCRIPTION
12/4/2020	CH'KD	ADD DWY

SCALE: 1"=10'  
DATE: 06-18-19  
DWN: JS ME16  
CH'KD:  
JOB NO.: 16052  
DWG. NO. L-14757

SHEET  
**C6**  
OF 9 SHEETS



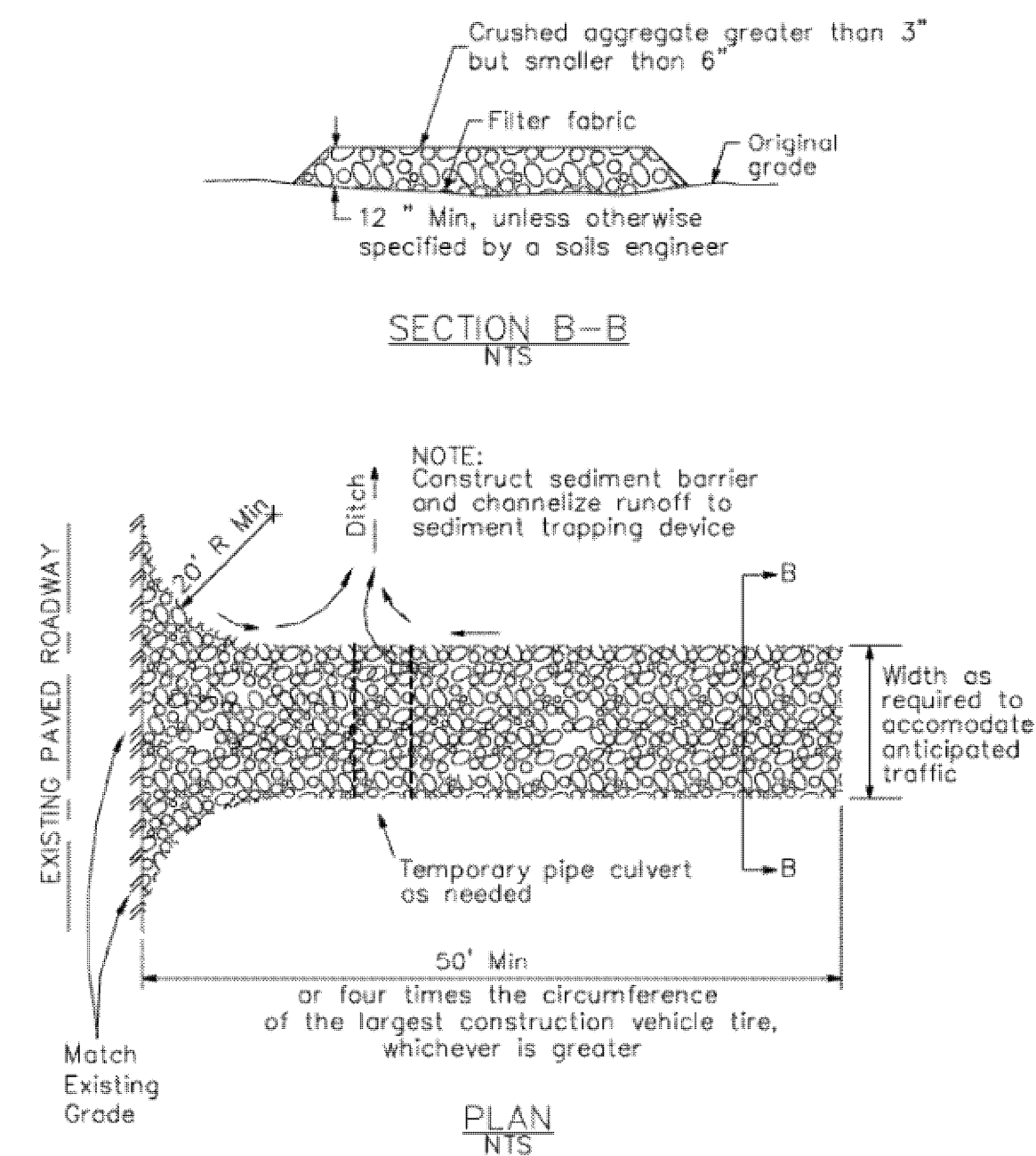




3

**Stabilized Construction Entrance/Exit**

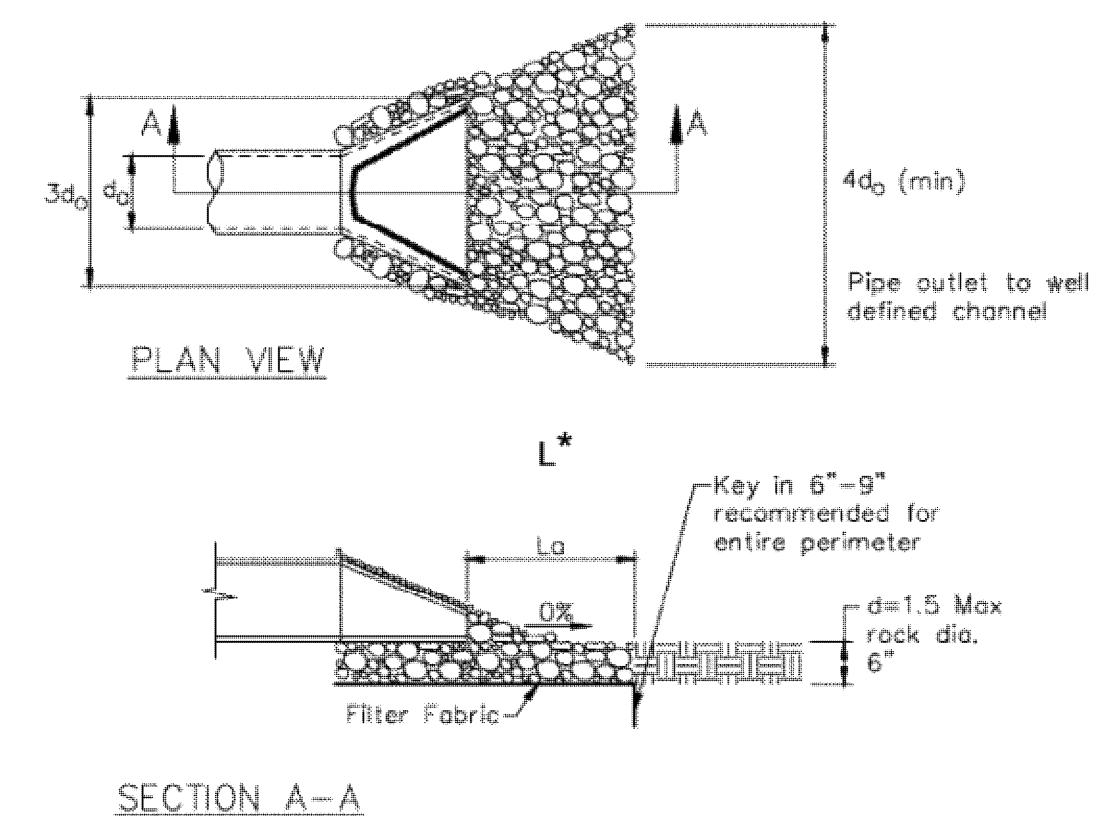
CASQA Detail TC-1



4

**Velocity Dissipation Devices**

CASQA Detail EC-10



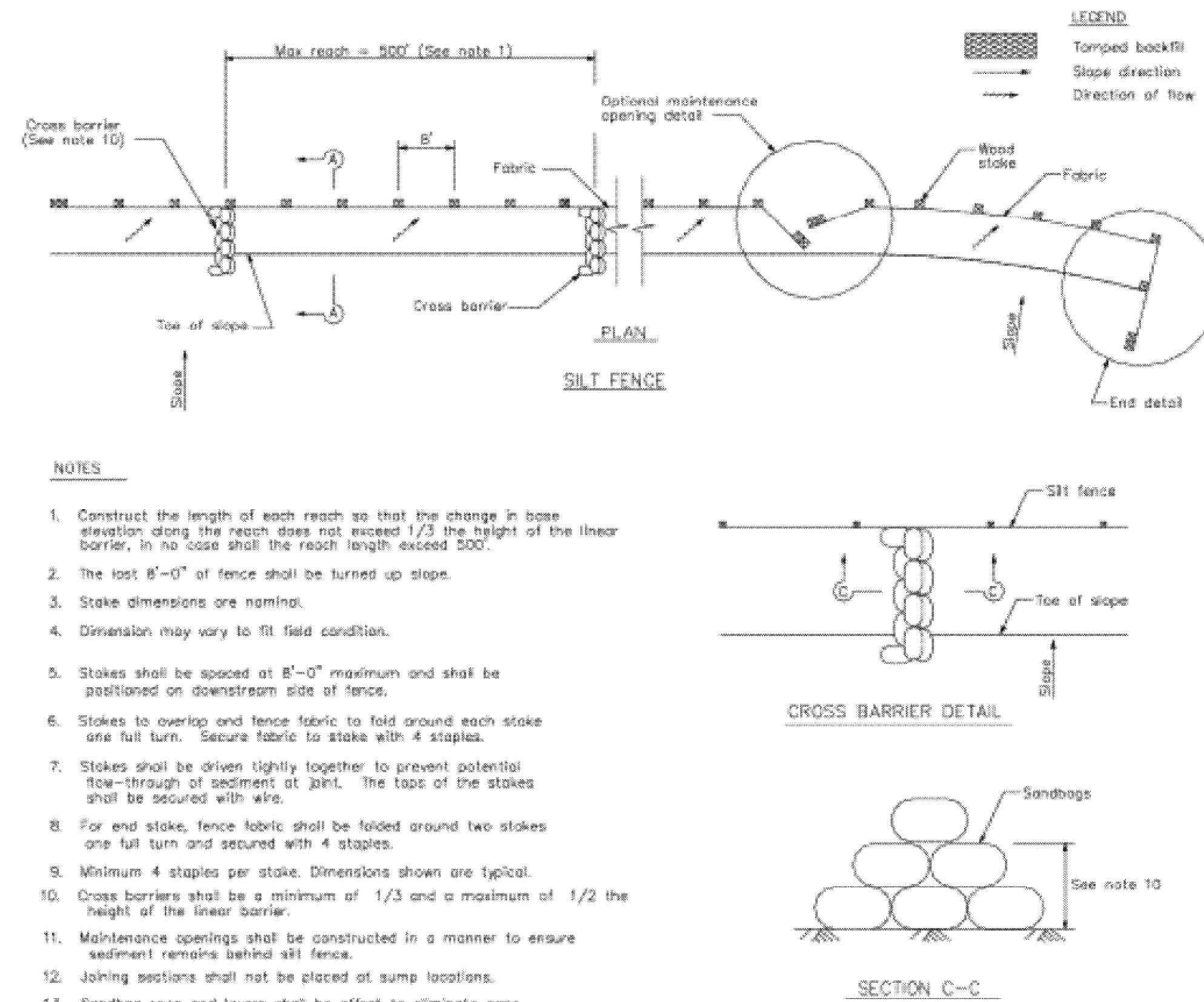
\* Length per ABAG Design Standards

Source for Graphics: California Stormwater BMP Handbook, California Stormwater Quality Association, January 2003.  
Available from [www.cabmphandbooks.com](http://www.cabmphandbooks.com).

1

**Silt Fence**

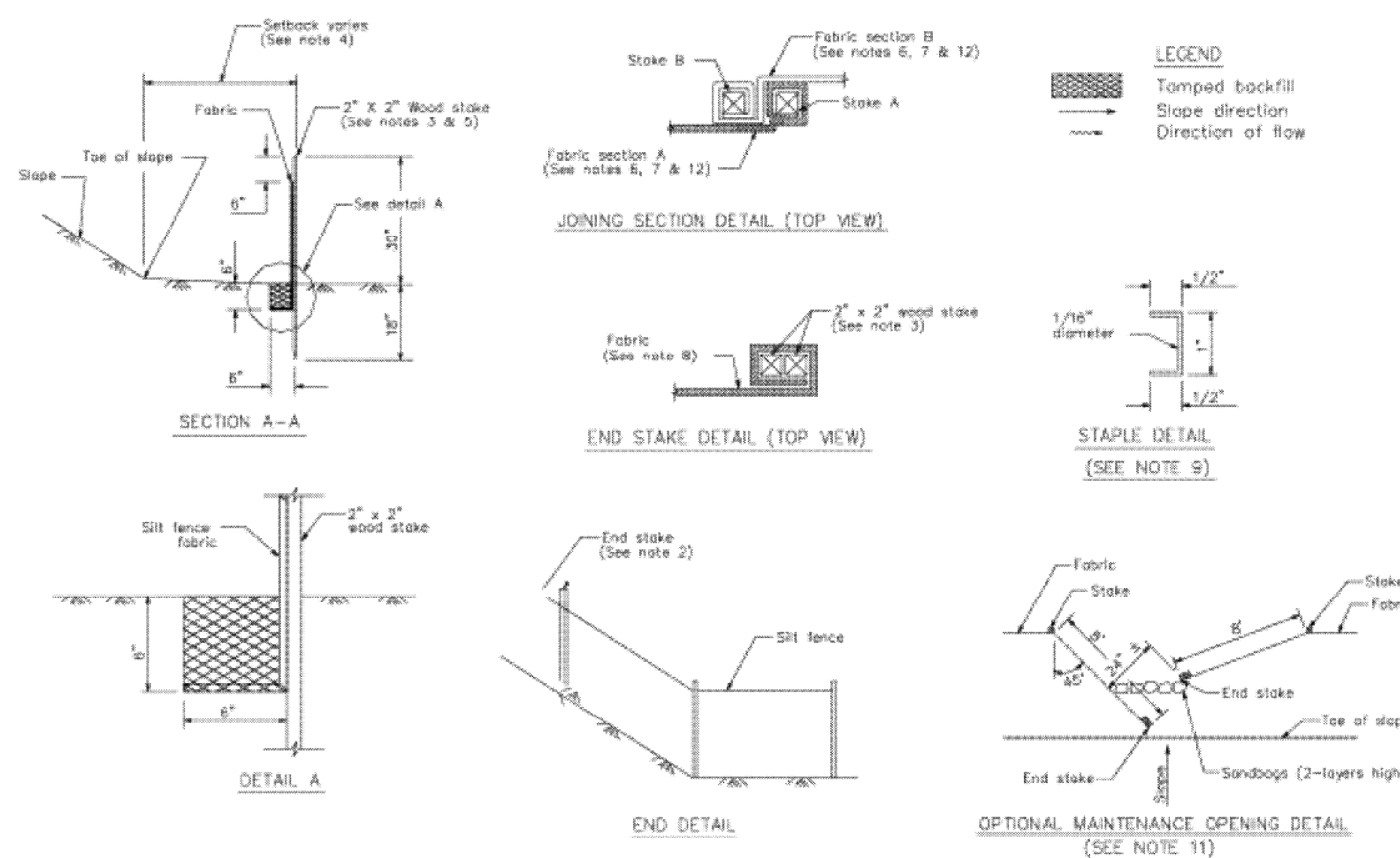
CASQA Detail SE-1



2

**Silt Fence**

CASQA Detail SE-1

**STANDARD BEST MANAGEMENT PRACTICE NOTES**

- Solid and Demolition Waste Management:** Provide designated waste collection areas and containers on site away from streets, gutters, storm drains, and waterways, and arrange for regular disposal. Waste containers must be watertight and covered at all times except when waste is deposited. Refer to Erosion & Sediment Control Field Manual, 4th Edition (page C3) or latest.
- Hazardous Waste Management:** Provide proper handling and disposal of hazardous wastes by a licensed hazardous waste material hauler. Hazardous wastes shall be stored and properly labeled in sealed containers constructed of suitable materials. Refer to Erosion & Sediment Control Field Manual, 4th Edition (pages C-5 to C-6) or latest.
- Spill Prevention and Control:** Provide proper storage areas for liquid and solid materials, including chemicals and hazardous substances, away from streets, gutters, storm drains, and waterways. Spill control materials must be kept on site where readily accessible. Spills must be cleaned up immediately and contaminated soil disposed properly. Refer to Erosion & Sediment Control Field Manual, 4th Edition (pages C-7 to C-8, C-13 to C-14) or latest.
- Vehicle and Construction Equipment Service and Storage:** An area shall be designated for the maintenance, where on-site maintenance is required, and storage of equipment that is protected from stormwater run-on and runoff. Measures shall be provided to capture any waste oils, lubricants, or other potential pollutants and these wastes shall be properly disposed of off site. Fueling and major maintenance/repair, and washing shall be conducted off-site whenever feasible. Refer to Erosion & Sediment Control Field Manual, 4th Edition (page C9) or latest.
- Material Delivery, Handling and Storage:** In general, materials should not be stockpiled on site. Where temporary stockpiles are necessary and approved by the County, they shall be covered with secured plastic sheeting or tarp and located in designated areas near construction entrances and away from drainage paths and waterways. Barriers shall be provided around storage areas where materials are potentially in contact with runoff. Refer to Erosion & Sediment Control Field Manual, 4th Edition (pages C-11 to C-12) or latest.
- Handling and Disposal of Concrete and Cement:** When concrete trucks and equipment are washed on-site, concrete wastewater shall be contained in designated containers or in a temporary lined and watertight pit where wasted concrete can harden for later removal. If possible have concrete contractor remove concrete wash water from site. In no case shall fresh concrete be washed into the road right-of-way. Refer to Erosion & Sediment Control Field Manual, 4th Edition (pages C-15 to C-16) or latest.
- Pavement Construction Management:** Prevent or reduce the discharge of pollutants from paving operations, using measures to prevent run-on and runoff pollution and properly disposing of wastes. Avoid paving in the wet season and reschedule paving when rain is in the forecast. Residue from saw-cutting shall be vacuumed for proper disposal. Refer to Erosion & Sediment Control Field Manual, 4th Edition (pages C-17 to C-18) or latest.
- Contaminated Soil and Water Management:** Inspections to identify contaminated soils should occur prior to construction and at regular intervals during construction. Remediating contaminated soil should occur promptly after identification and be specific to the contaminant identified, which may include hazardous waste removal. Refer to Erosion & Sediment Control Field Manual, 4th Edition (pages C-19 to C-20) or latest.
- Sanitary/Septic Water Management:** Temporary sanitary facilities should be located away from drainage paths, waterways, and traffic areas. Only licensed sanitary and septic waste haulers should be used. Secondary containment should be provided for all sanitary facilities. Refer to Erosion & Sediment Control Field Manual, 4th Edition (page C-21) or latest.
- Inspection & Maintenance:** Areas of material and equipment storage sites and temporary sanitary facilities must be inspected weekly. Problem areas shall be identified and appropriate additional and/or alternative control measures implemented immediately, within 24 hours of the problem being identified.

**STANDARD EROSION CONTROL NOTES****1. Sediment Control Management:**

**Tracking Prevention & Clean Up:** Activities shall be organized and measures taken as needed to prevent or minimize tracking of soil onto the public street system. A gravel or proprietary device construction entrance/exit is required for all sites. Clean up of tracked material shall be provided by means of a street sweeper prior to an approaching rain event, or at least once at the end of each workday that material is tracked, or, more frequently as determined by the County Inspector. Refer to Erosion & Sediment Control Field Manual, 4th Edition (pages B-31 to B-33) or latest.

**Storm Drain Inlet and Catch Basin Inlet Protection:**

All inlets within the vicinity of the project and within the project limits shall be protected with gravel bags placed around inlets or other inlet protection. At locations where exposed soils are present, staked fiber rolls or staked silt fences can be used. Inlet filters are not allowed due to clogging and subsequent flooding. Refer to Erosion & Sediment Control Field Manual, 4th Edition (pages B-49 to B-51) or latest.

**Storm Water Runoff:** No storm water runoff shall be allowed to drain in to the existing and/or proposed underground storm drain system or other above ground watercourses until appropriate erosion control measures are fully installed.

**Dust Control:** The contractor shall provide dust control in graded areas as required by providing wet suppression or chemical stabilization of exposed soils, providing for rapid clean up of sediments deposited on paved roads, furnishing construction road entrances and vehicle wash down areas, and limiting the amount of areas disturbed by clearing and earth moving operations by scheduling these activities in phases.

**Stockpiling:** Excavated soils shall not be placed in streets or on paved areas. Borrow and temporary stockpiles shall be protected with appropriate erosion control measures (tarps, straw bales, silt fences, ect.) to ensure silt does not leave the site or enter the storm drain system or neighboring watercourse.

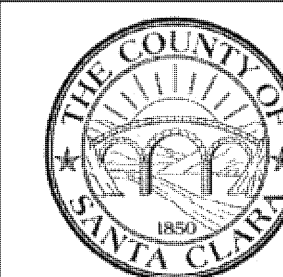
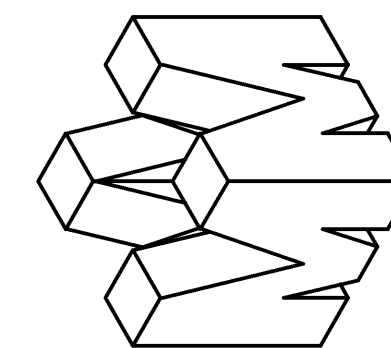
- Erosion Control:** During the rainy season, all disturbed areas must include an effective combination of erosion and sediment control. It is required that temporary erosion control measures are applied to all disturbed soil areas prior to a rain event. During the non-rainy season, erosion control measures must be applied sufficient to control wind erosion at the site.
- Inspection & Maintenance:** Disturbed areas of the Project's site, locations where vehicles enter or exit the site, and all erosion and sediment controls that are identified as part of the Erosion Control Plans must be inspected by the Contractor before, during, and after storm events, and at least weekly during seasonal wet periods. Problem areas shall be identified and appropriate additional and/or alternative control measures implemented immediately, within 24 hours of the problem being identified.
- Project Completion:** Prior to project completion and signoff by the County Inspector, all disturbed areas shall be reseeded, planted, or landscaped to minimize the potential for erosion on the subject site.
- It shall be the Owner's/Contractor's responsibility to maintain control of the entire construction operation and to keep the entire site in compliance with the erosion control plan.
- Erosion and sediment control best management practices shall be operable year round or until vegetation is fully established on landscaped surfaces.

**Project Information**

EROSION CONTROL PLAN  
APN 612-14-053  
GARICAL DRIVE, SAN JOSE  
IN SANTA CLARA COUNTY, CALIFORNIA

PHILIPPE AUGER, R.C.E. 21500-EXPIRES 9-30-19

PLANNING • LAND SURVEYING • CIVIL ENGINEERING • CONSTRUCTION STAKING

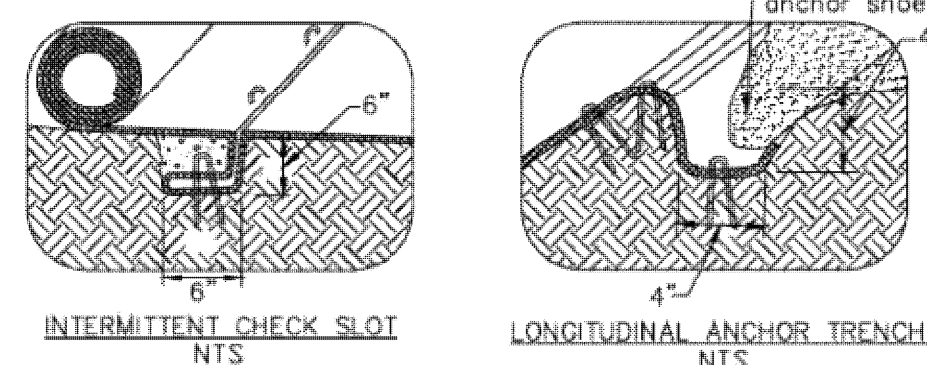
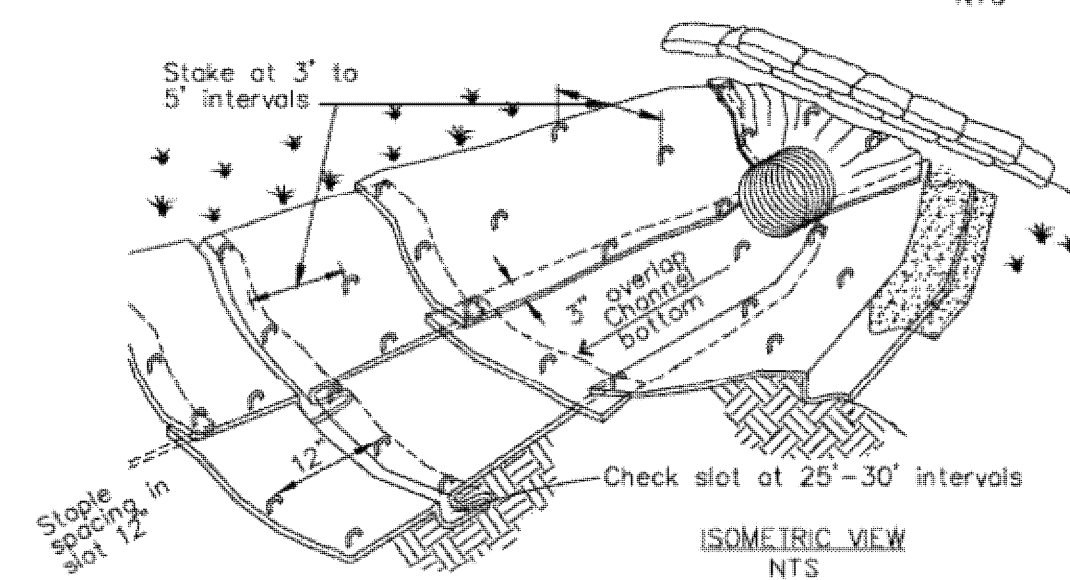
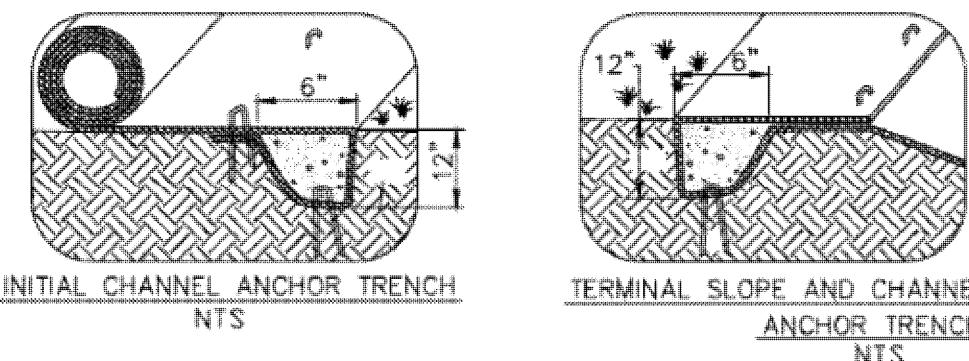
**MISSION ENGINEERS, INC.**RESPONSIVE, RELIABLE RESULTS SINCE 1953  
2355 De La Cruz Blvd. Santa Clara, California 95050  
Ph: (408) 727-8262 FAX: (408) 727-8285 E-mail: [mission@missionengineersinc.com](mailto:mission@missionengineersinc.com)**BMP-1**



7

**Geotextiles and Mats**

CASQA Detail EC-7



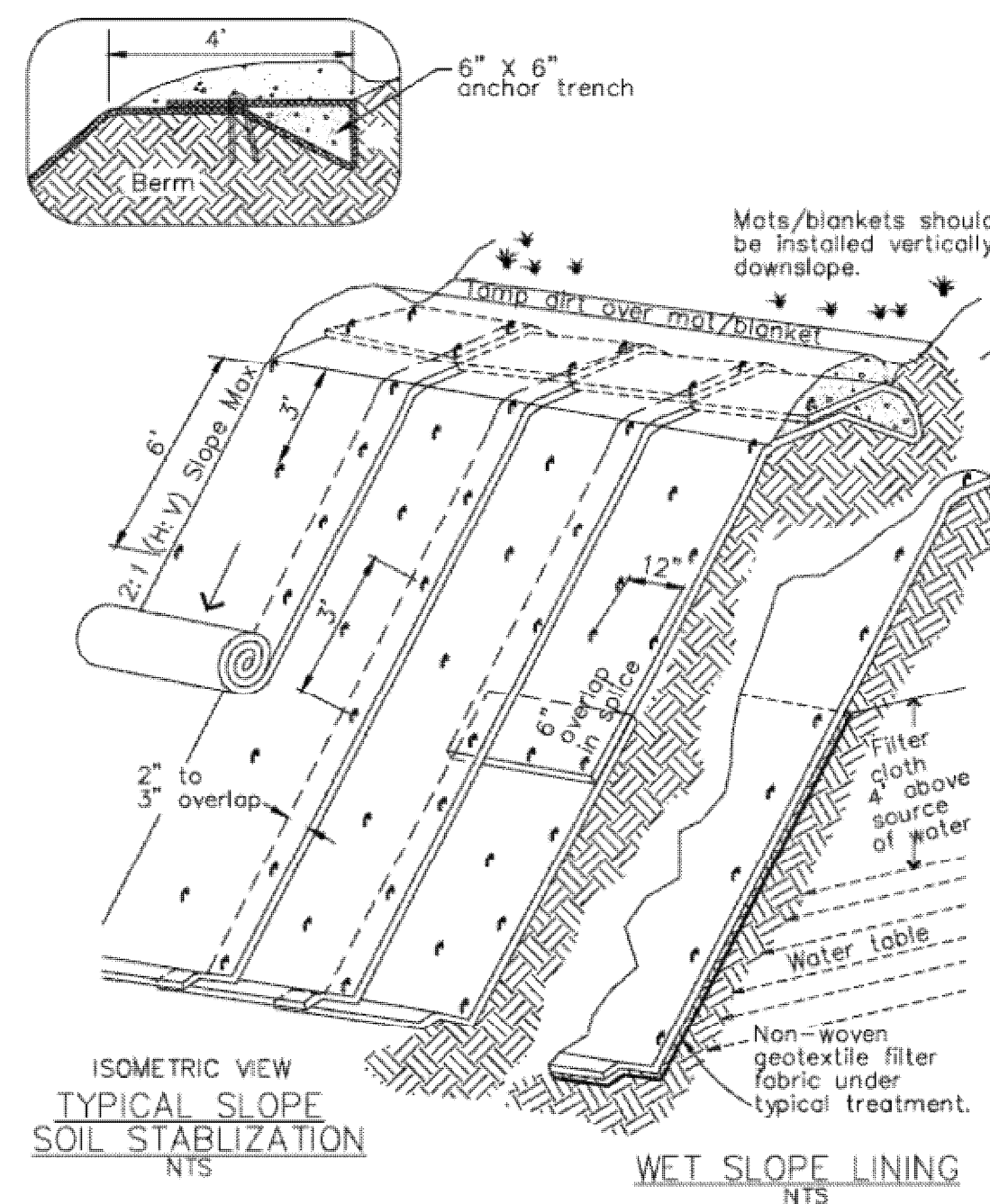
- NOTES:
1. Check slots to be constructed per manufacturers specifications.
  2. Staking or stapling layout per manufacturers specifications.
  3. Install per manufacturer's recommendations

TYPICAL INSTALLATION DETAIL

5

**Geotextiles and Mats**

CASQA Detail EC-7



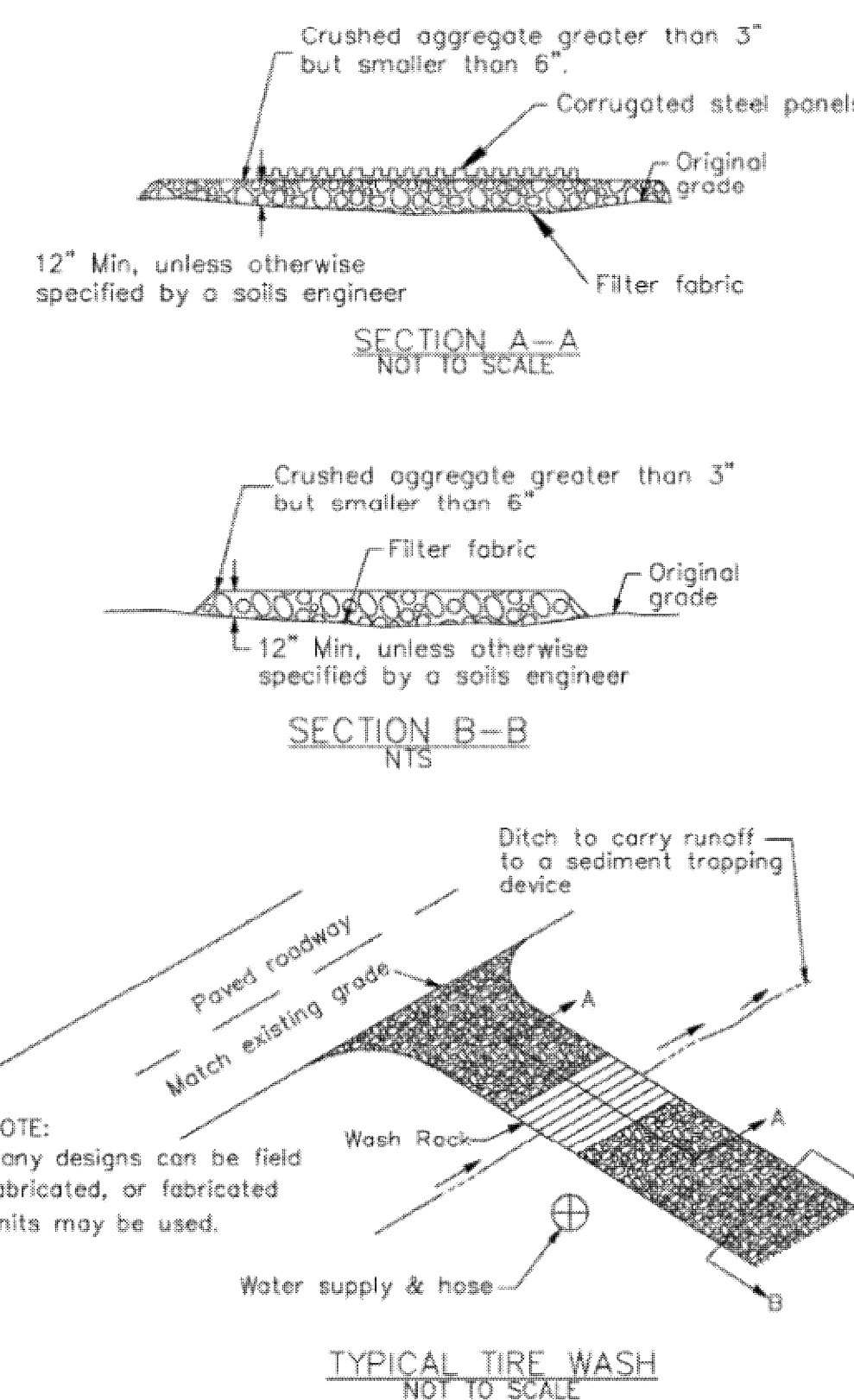
- NOTES:
1. Slope surface shall be free of rocks, clods, sticks and grass. Mats/blankets shall have good soil contact.
  2. Lay blankets loosely and stake or staple to maintain direct contact with the soil. Do not stretch.
  3. Install per manufacturer's recommendations

TYPICAL INSTALLATION DETAIL

3

**Entrance/Outlet Tire Wash**

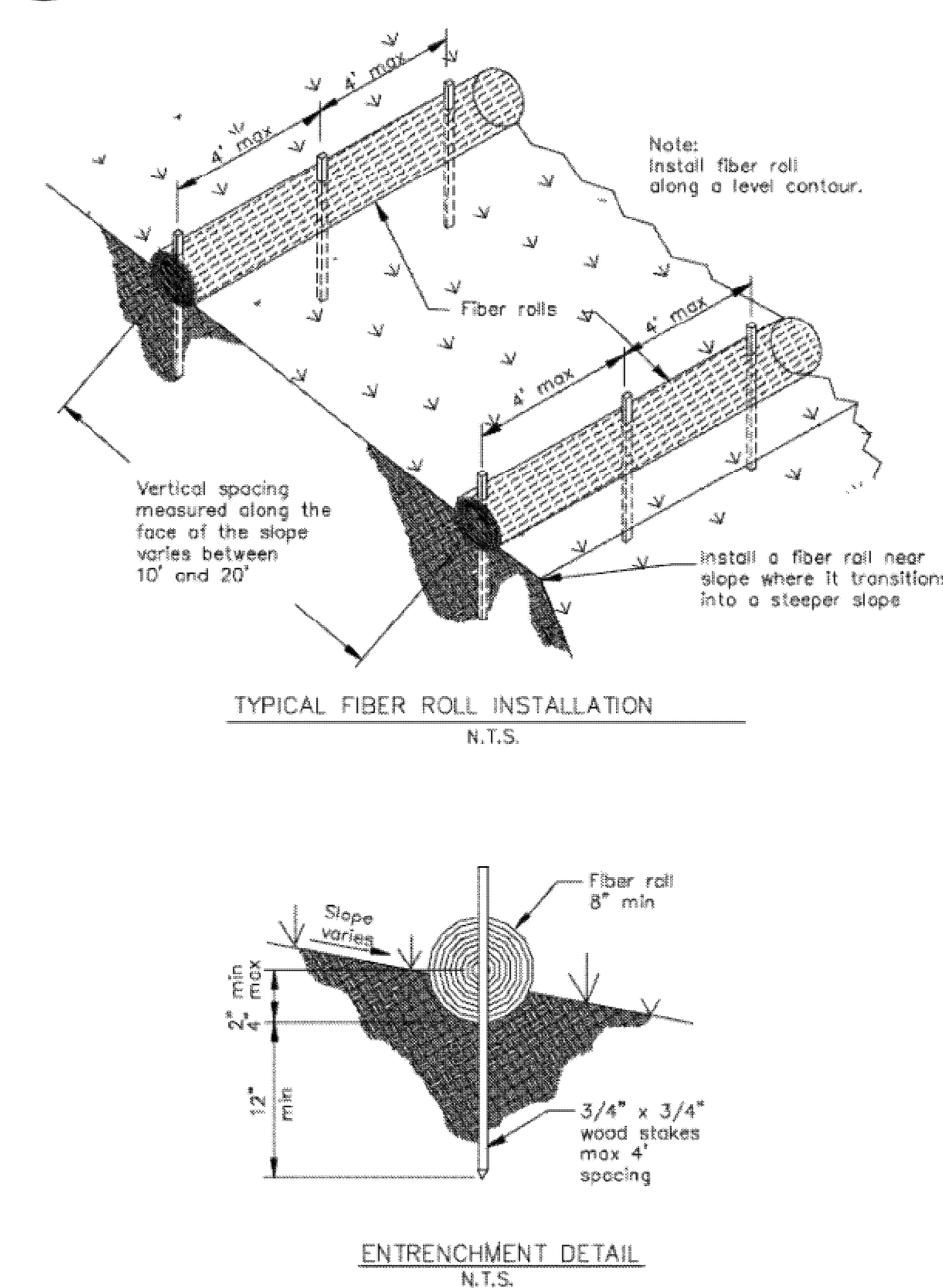
CASQA Detail TC-3



1

**Fiber Rolls**

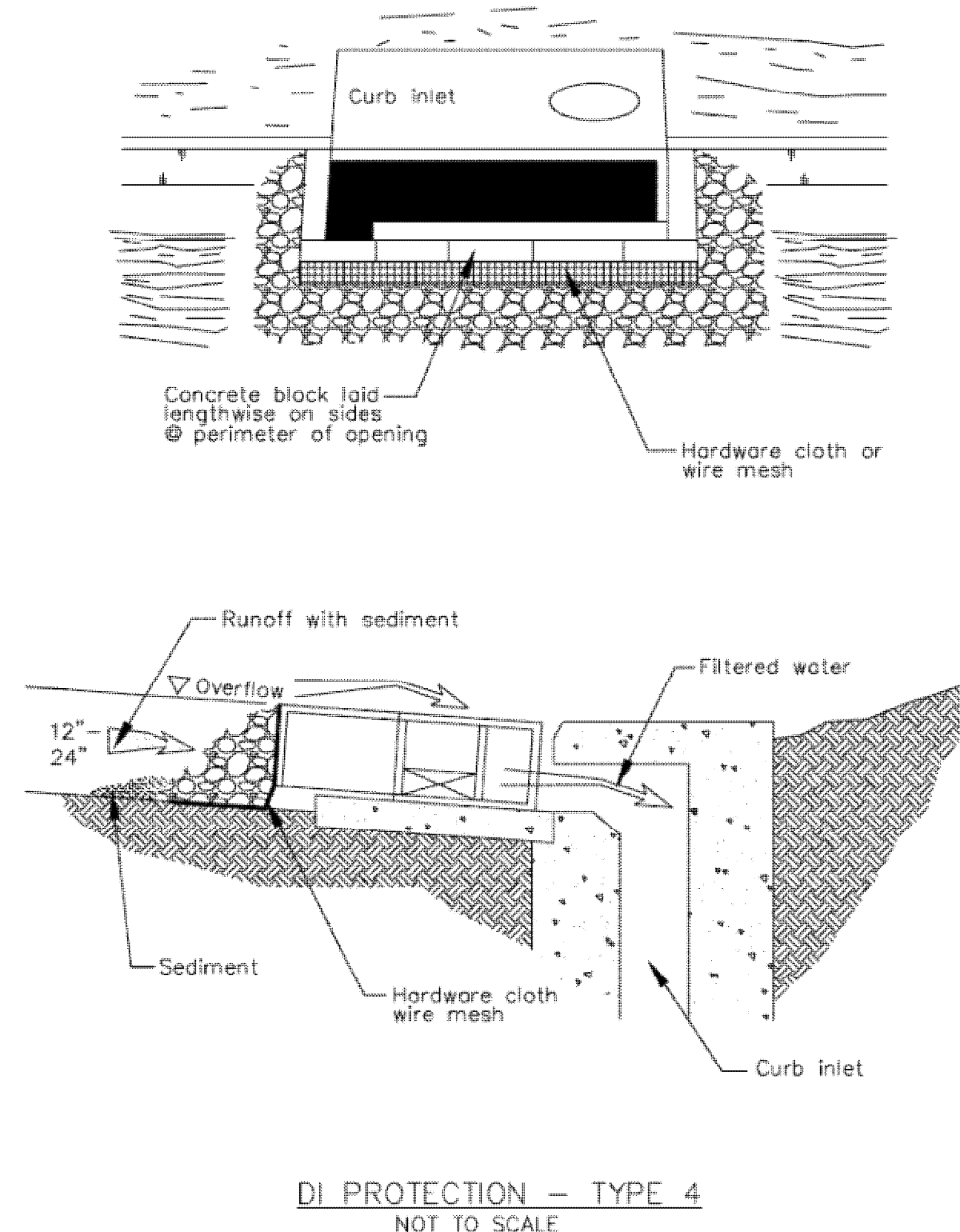
CASQA Detail SE-5



8

**Storm Drain Inlet Protection**

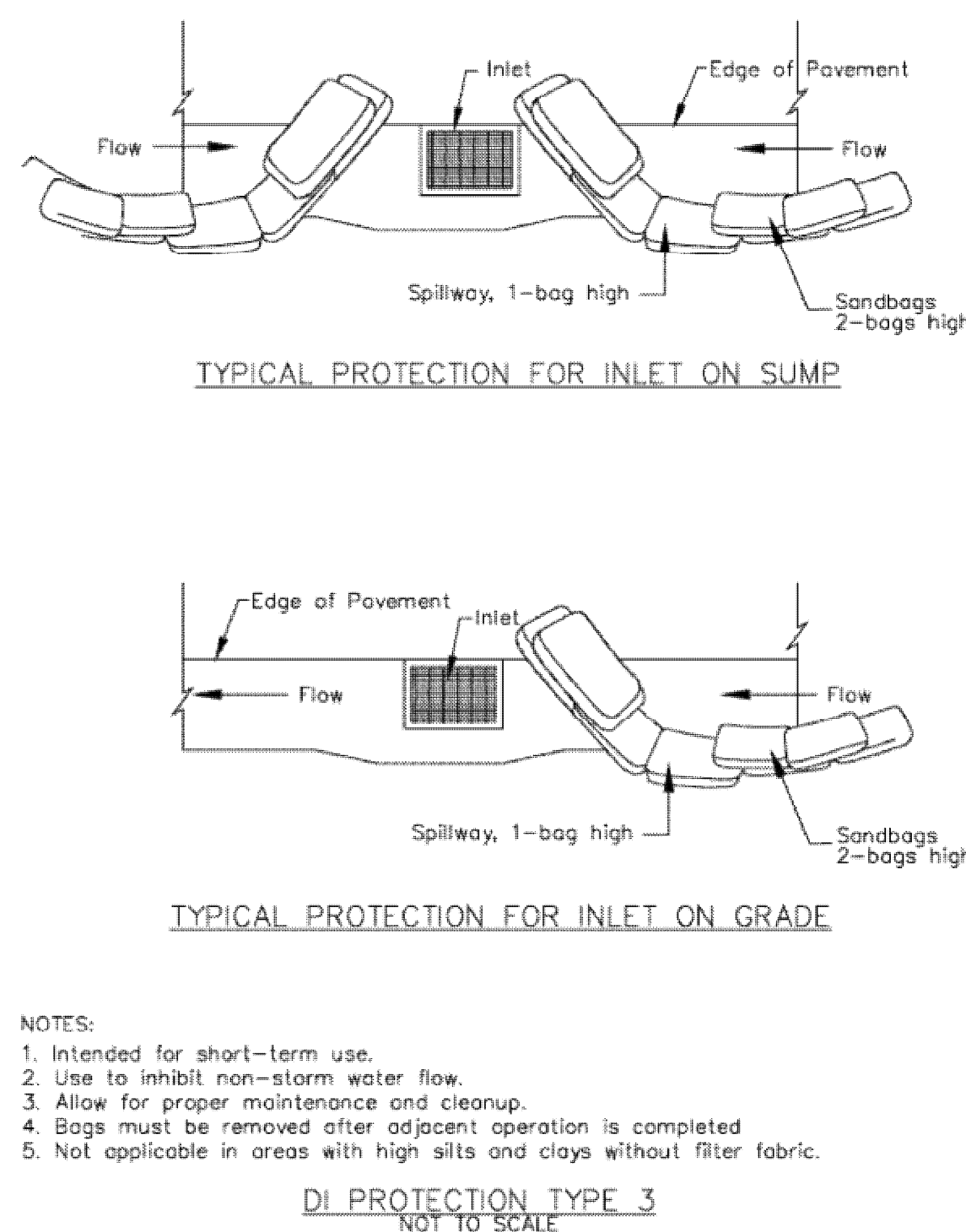
CASQA Detail SE-10



6

**Storm Drain Inlet Protection**

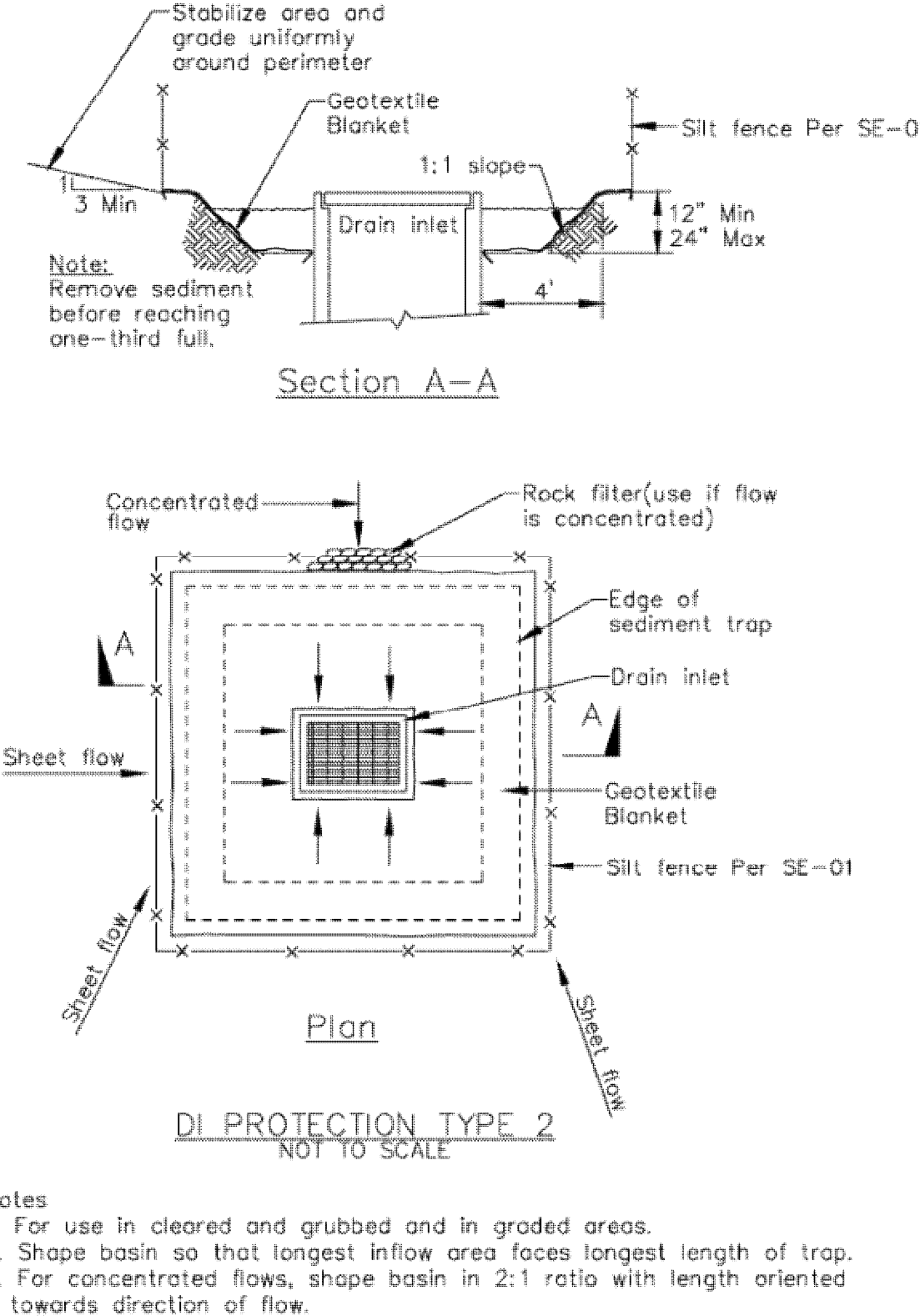
CASQA Detail SE-10



4

**Storm Drain Inlet Protection**

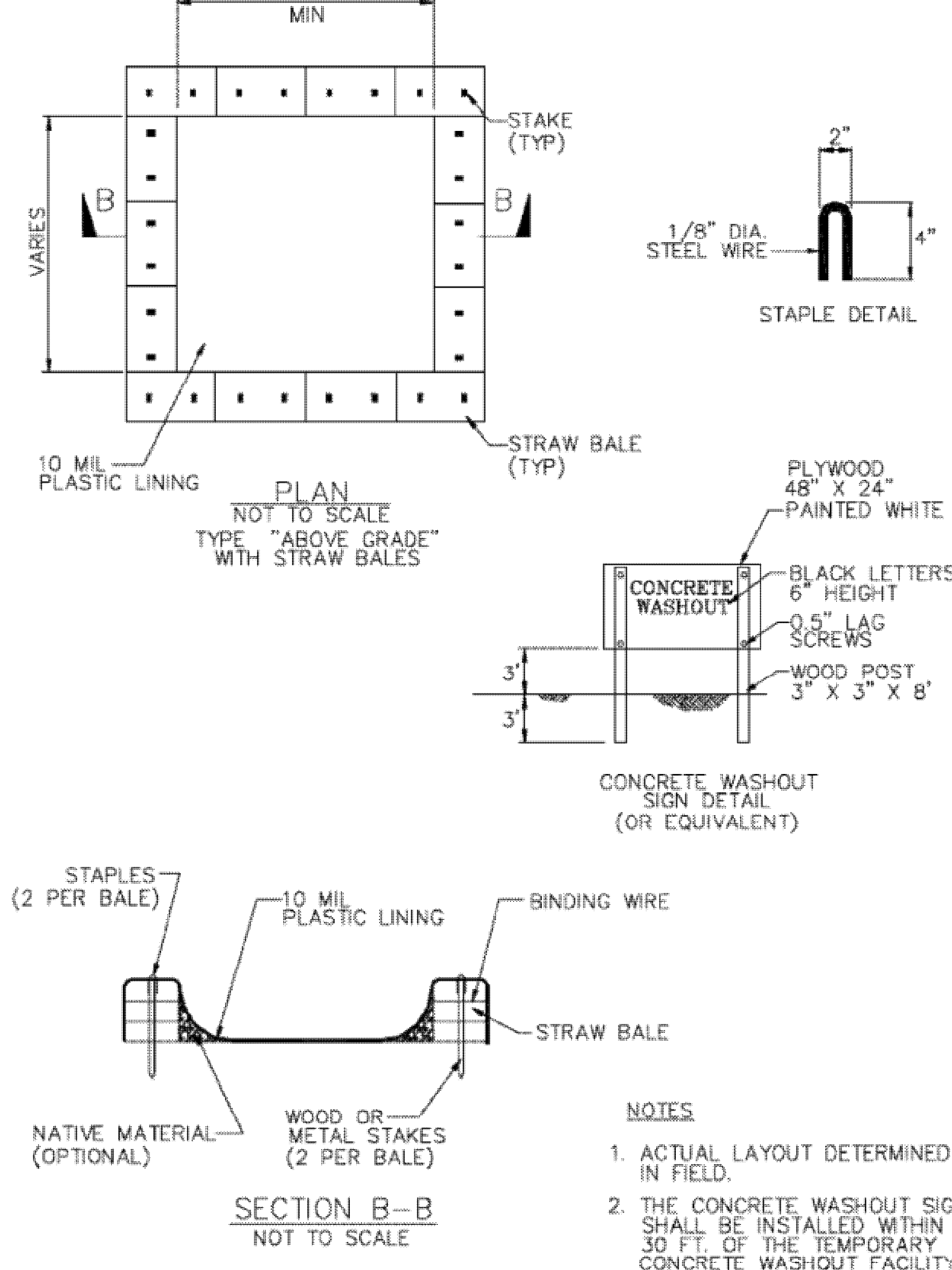
CASQA Detail SE-10



2

**Concrete Waste Management**

CASQA Detail WM-8



Source for Graphics: California Stormwater BMP Handbook, California Stormwater Quality Association, January 2003.  
Available from [www.cabmphandbooks.com](http://www.cabmphandbooks.com).

**Project Information**

EROSION CONTROL PLAN  
APN 612-14-053  
GARCAL DRIVE, SAN JOSE  
IN SANTA CLARA COUNTY, CALIFORNIA

PHILIPPE AUGER, R.C.E. 21500-EXPIRES 9-30-19

PLANNING • LAND SURVEYING • CIVIL ENGINEERING • CONSTRUCTION STAKING  
**MISSION ENGINEERS, INC.**  
RESPONSIVE, RELIABLE RESULTS SINCE 1953  
2355 De La Cruz Blvd. Santa Clara, California 95050  
Ph: (408) 727-8262 FAX: (408) 727-8285 E-mail: [missionengineersinc.com](mailto:missionengineersinc.com)

