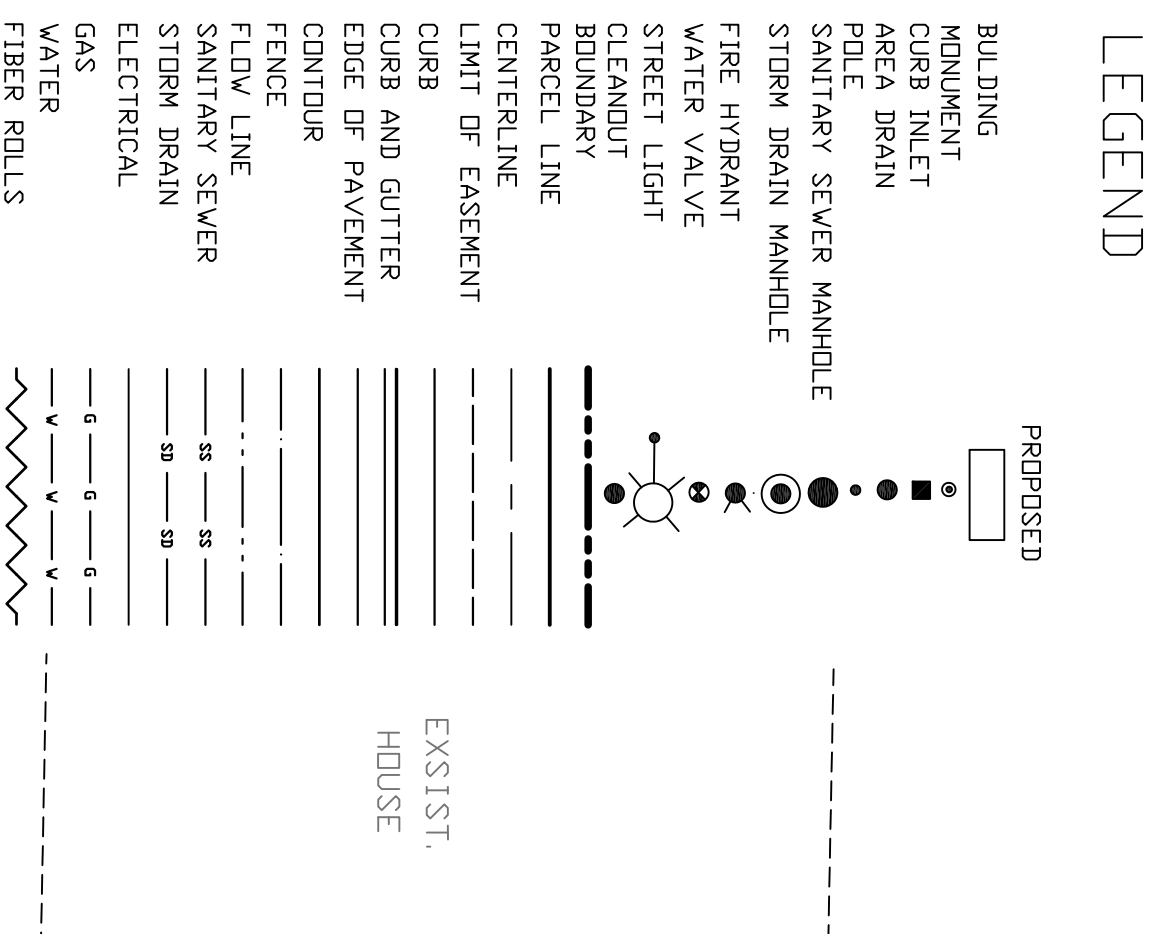


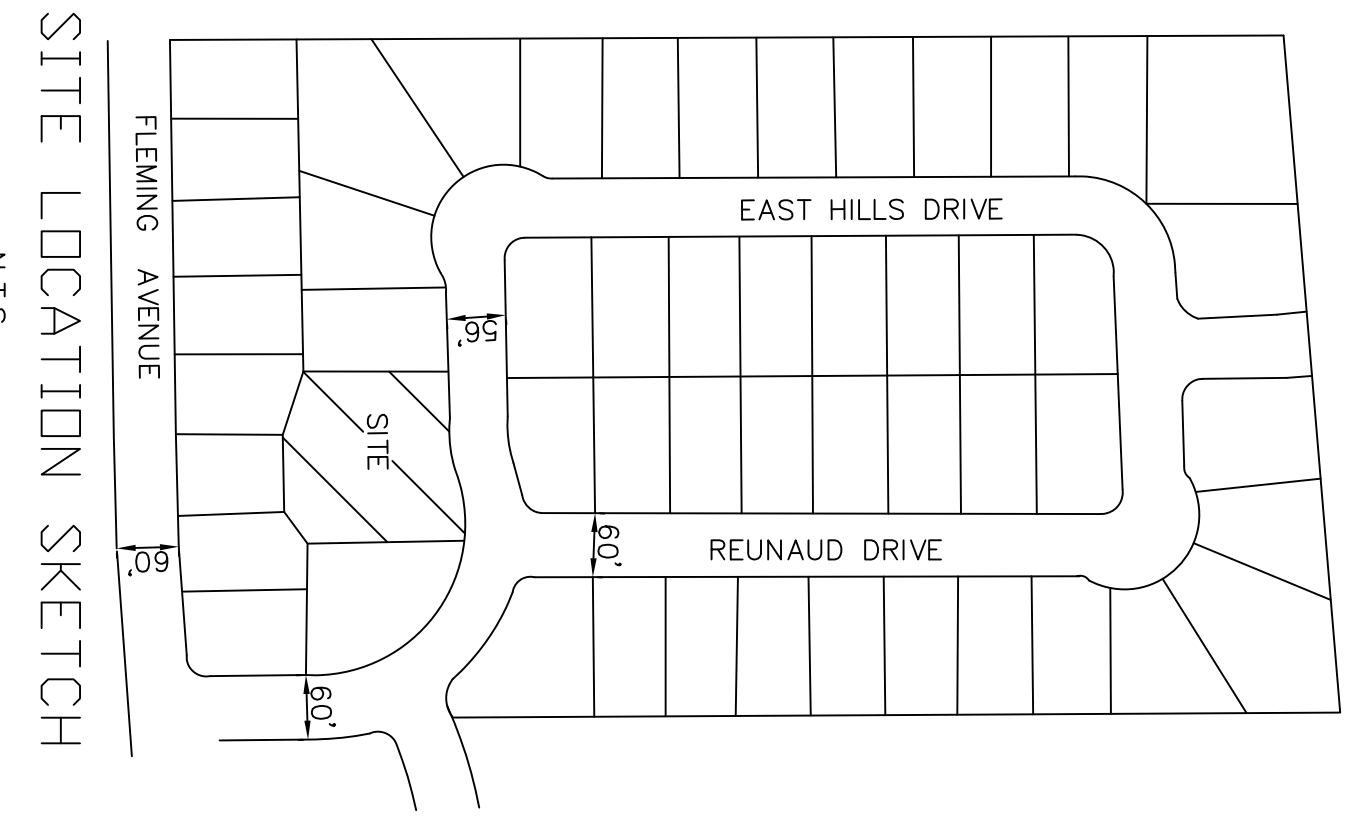
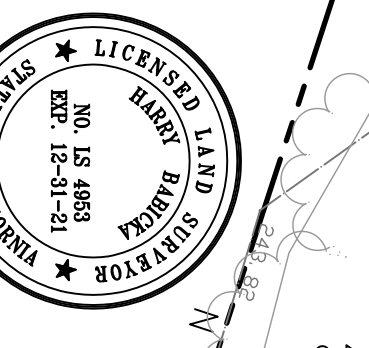
VICINITY MAP



TREE SCHEDULE

- |    |       |           |        |
|----|-------|-----------|--------|
| 1  | 9"    | LEMON     | RETAIN |
| 2  | 5"    | TANGERINE | REMOVE |
| 3  | 8"    | CEDAR     | RETAIN |
| 4  | 8"    | TREE      | RETAIN |
| 5  | 24"   | PALM      | RETAIN |
| 6  | 18"   | CEDAR     | RETAIN |
| 7  | 36"   | OAK       | RETAIN |
| 8  | 8"    | FIR       | RETAIN |
| 9  | 12"   | TREE      | REMOVE |
| 10 | 18"   | PALM      | RETAIN |
| 11 | 3-10" | PEPPERS   | RETAIN |
| 12 | 2-14" | PEPPERS   | REMOVE |

BENCH MARK: ID #841, ELEVATION = 232.33' (NGVD29)  
CHISELED SQUARE TOP OF CURB FLEMING AND EAST HILLS DR.



SITE LOCATION SKETCH  
N.T.S.

**NOTES:**

OWNER AND DEVELOPER:  
PARKER ROYALE, LLC  
349 1ST STREET, SUITE D  
LOS ALTOS, CA 94022  
CONTACT: GARY KING  
408-952-5044  
gking@kingconstruction.com

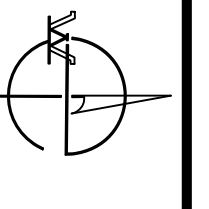
ENGINEER:  
WESTFALL ENGINEERS, INC.  
14583 BIG BASIN WAY  
SARATOGA, CA 95070  
408-867-0244

TOTAL AREA TO BE SUBDIVIDED = 0.6 ACRES, BEING AN EXCEPTION WITHIN SUBDIVISION OF TRACT NO. 1601, "EASTRIDGE ESTATES" RECORDED IN BOOK 97 PAGES 30 AND 31, SANTA CLARA COUNTY RECORDS. NO EASEMENTS OR DEDICATIONS ARE REQUIRED FOR THIS SUBDIVISION. OFF-SITE IMPROVEMENTS WILL BE LIMITED TO CONSTRUCTION OF A NEW DRIVEWAYS.

UTILITIES: SAN JOSE WATER CO.  
SANITARY SEWER - COUNTY SANITATION DISTRICT  
GAS AND ELECTRIC - PGE  
TELEPHONE AND CABLE AT&T  
THE SITE IS NOT SUBJECT TO INUNDATION.

| NO. | BY | DATE | REVISION | BY | DATE |
|-----|----|------|----------|----|------|
|     |    |      |          |    |      |
|     |    |      |          |    |      |

DATE: October 2020  
SCALE: HOR. 1"=10'  
PREDL ENGR: JC  
CHECKED: KC

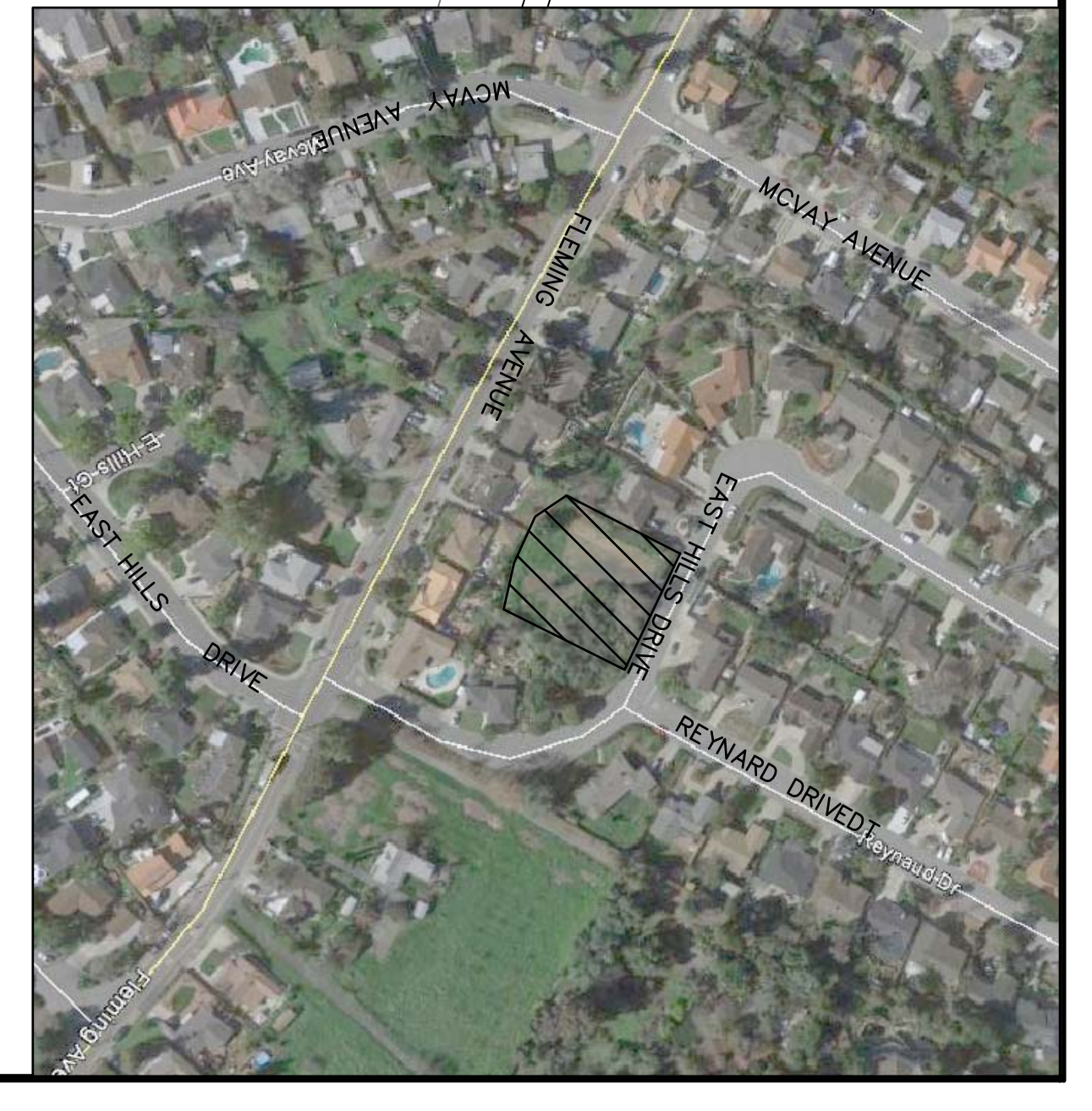
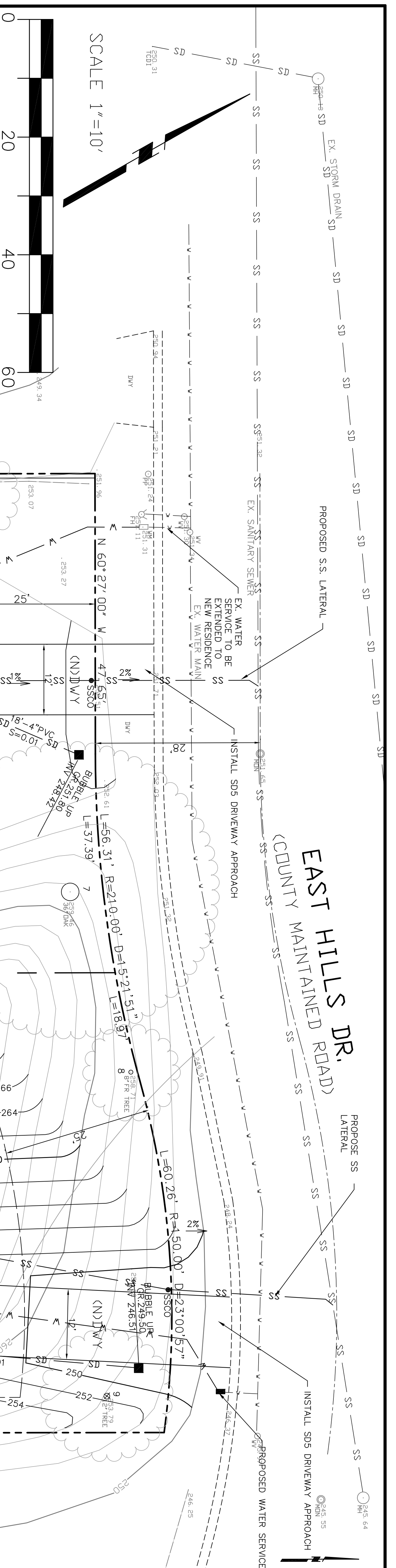


WESTFALL ENGINEERS, INC.  
14583 BIG BASIN WAY, SARATOGA, CA 95070 (408) 867-0244

TENTATIVE MAP FOR EAST HILLS ESTATES  
14795 EAST HILLS DRIVE, SAN JOSE, CA

JOB NO. 2015-023  
SHEET 1  
DF 2





**SURFACES**

| PARCELA | DESCRIPTION                         | EXISTING | PROPOSED |
|---------|-------------------------------------|----------|----------|
| PARCELA | BUILDINGS                           | 0        | 1854     |
|         | PATIOS/WALKS                        | 0        | 42       |
|         | IMPERVIOUS SURFACES                 | 0        | 1896     |
| PARCELB | LANDSCAPING DRIVEWAY (permeable DG) | 13014    | 9795     |
|         | DRIVEWAY                            | 0        | 1323     |
|         | TOTAL                               | 13014    | 13014    |

**EARTHWORK QUANTITIES**

| PARCELA | DESCRIPTION             | CUT      | FILL     |
|---------|-------------------------|----------|----------|
| PARCELA | GARAGE                  | 0 C.Y.   | 17 C.Y.  |
|         | RESIDENCE YARD DRIVEWAY | 0 C.Y.   | 0 C.Y.   |
|         | DRIVEWAY                | 0 C.Y.   | 132 C.Y. |
|         | TOTAL                   | 0 C.Y.   | 89 C.Y.  |
|         | EXPORT                  | 905 C.Y. | 0 C.Y.   |
| PARCELB | IMPORT                  | 201 C.Y. | 201 C.Y. |
|         | TOTAL                   | 201 C.Y. | 201 C.Y. |

**LEGEND**

**EXISTING**

- BUILDING
- MINUTE
- CURB INLET
- AREA DRAIN
- POLE
- SANITARY SEWER MANHOLE
- STORM DRAIN MANHOLE
- FIRE HYDRANT
- WATER VALVE
- STREET LIGHT
- CLEANOUT
- BOUNDARY
- PARCEL LINE
- CENTERLINE
- LIMIT OF EASEMENT
- CURB
- CURB AND GUTTER
- EDGE OF PAVEMENT
- CONTOUR
- FENCE
- FLOW LINE
- SANITARY SEWER
- STORM DRAIN
- ELECTRICAL
- GAS
- WATER
- FIBER ROLLS

**PROPOSED**

- BUILDING
- MINUTE
- CURB INLET
- AREA DRAIN
- POLE
- SANITARY SEWER MANHOLE
- STORM DRAIN MANHOLE
- FIRE HYDRANT
- WATER VALVE
- STREET LIGHT
- CLEANOUT
- BOUNDARY
- PARCEL LINE
- CENTERLINE
- LIMIT OF EASEMENT
- CURB
- CURB AND GUTTER
- EDGE OF PAVEMENT
- CONTOUR
- FENCE
- FLOW LINE
- SANITARY SEWER
- STORM DRAIN
- ELECTRICAL
- GAS
- WATER
- FIBER ROLLS

**TREE SCHEDULE**

|    |       |            |        |
|----|-------|------------|--------|
| 1  | 9"    | LEMONGRASS | RETAIN |
| 2  | 5"    | TANGIERINE | REMOVE |
| 3  | 8"    | CEDAR      | RETAIN |
| 4  | 8"    | TREE       | RETAIN |
| 5  | 24"   | PALM       | RETAIN |
| 6  | 18"   | CEDAR      | RETAIN |
| 7  | 36"   | OAK        | RETAIN |
| 8  | 8"    | FIR        | RETAIN |
| 9  | 12"   | TREE       | REMOVE |
| 10 | 18"   | PALM       | RETAIN |
| 11 | 3-10" | PEPPERS    | RETAIN |
| 12 | 2-14" | PEPPERS    | RETAIN |

BENCH MARK:  
10' #841, ELEVATION = 232.33' (NSGD29)  
CHISELED SQUARE TOP OF CURB FLEMING AND EAST HILLS DR.

**REVISION**

| NO. | BY | DATE | REVISION |
|-----|----|------|----------|
|     |    |      |          |

DATE: DECEMBER 2020  
SCALE: HDR, 1"=10'  
PRJL ENGR: J.C.  
CHECKED: K.C.

BY: *Harry Babička*  
HARRY BABIČKA, LS7953

**WESTFALL ENGINEERS, INC.**  
14583 BIG BASIN WAY, SARATOGA, CA 95070 (408)867-0244

**IMPROVEMENT PLAN FOR EAST HILLS ESTATES**  
14795 EAST HILLS DRIVE, SAN JOSE, CA

**LICENSED LAND SURVEYOR**  
NO. 15 4883  
EXPIRES 12-31-21  
STATE OF CALIFORNIA

JOB NO. 2015-023  
SHEET 2  
OF 2