

VICINITY MAP

PROPERTY INFORMATION:

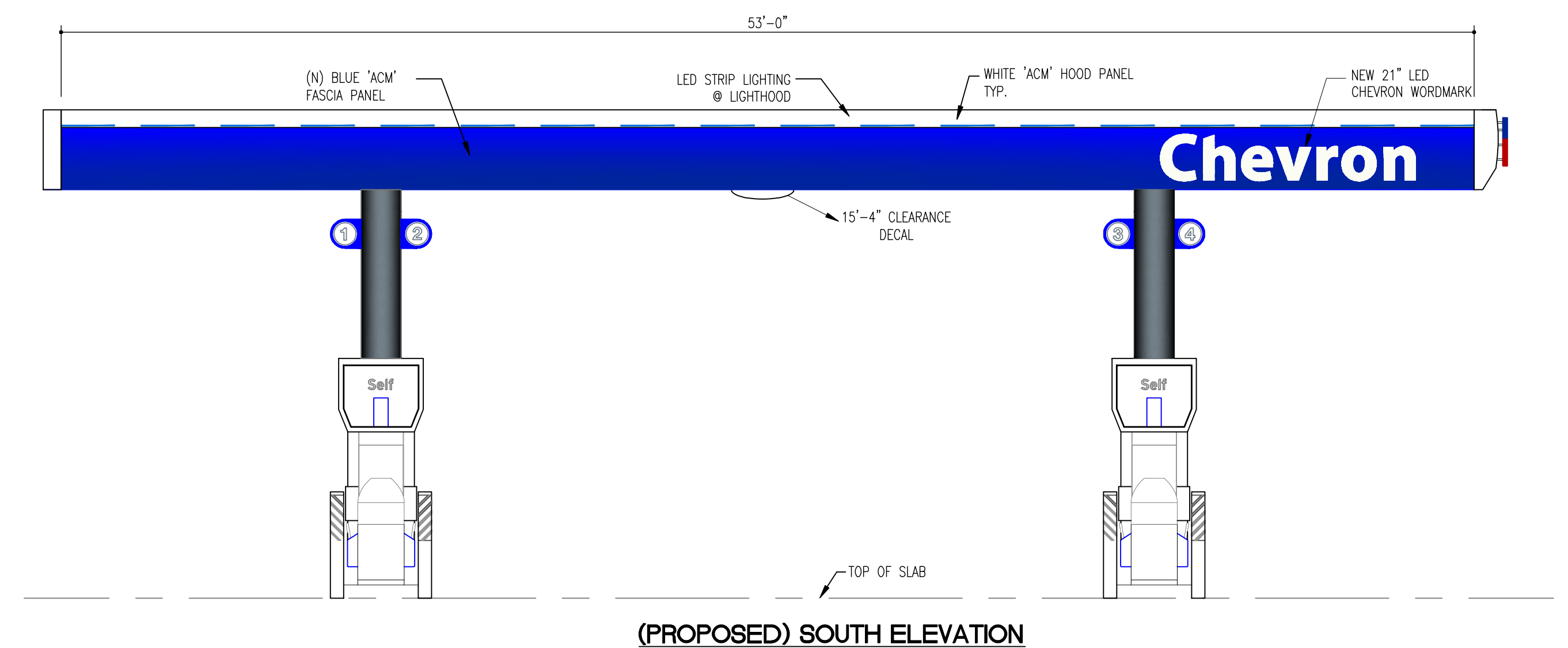
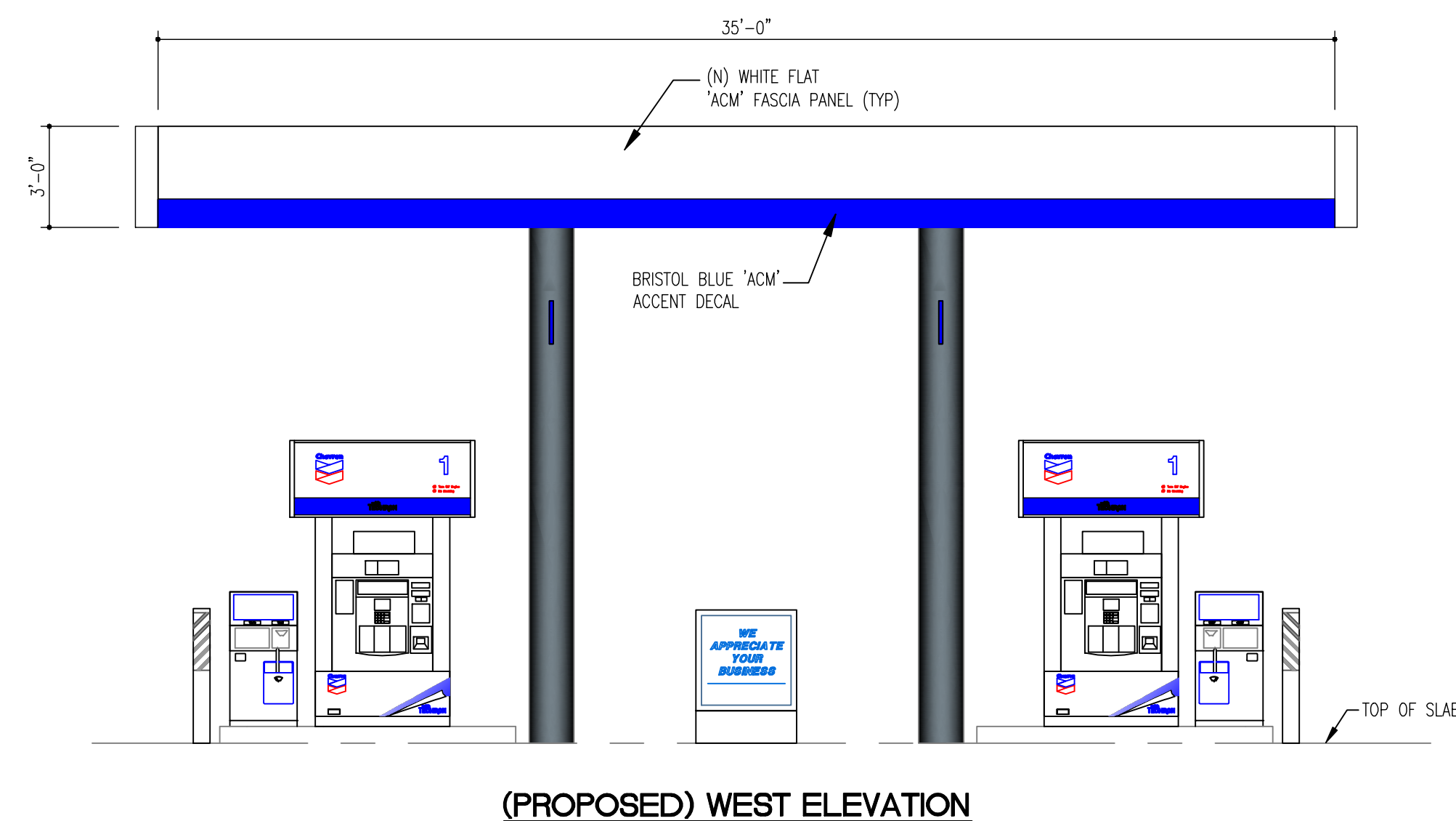
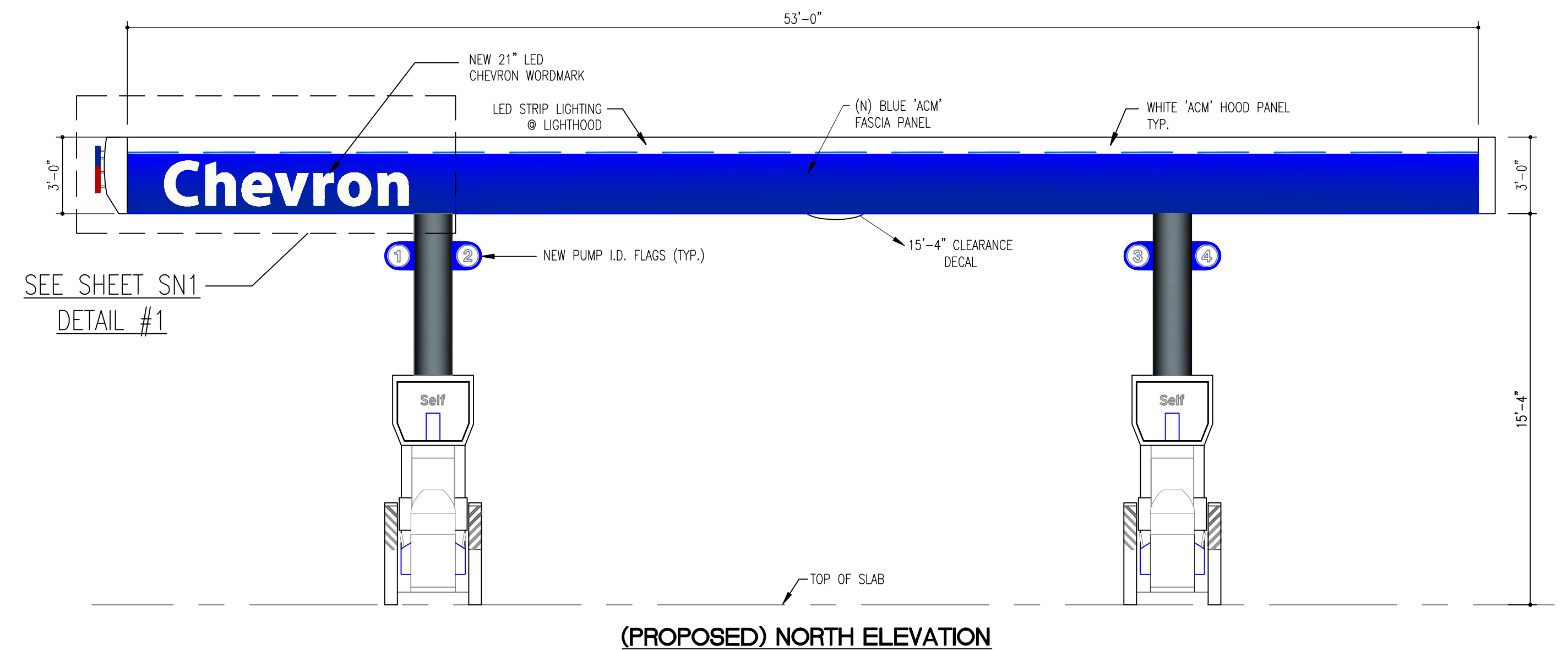
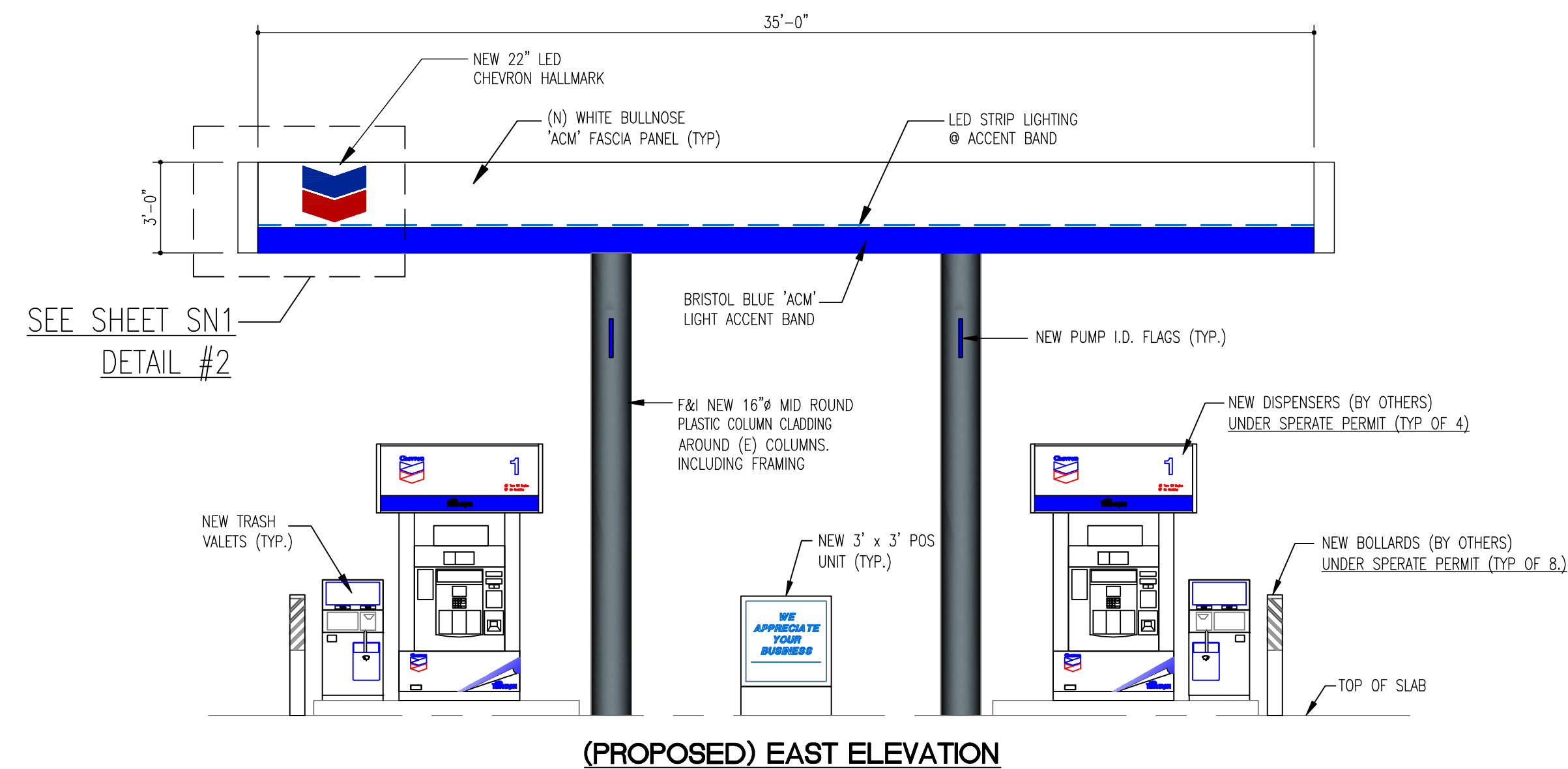
| | |
|------------------|---|
| PROJECT ADDRESS: | 13235 MONTEREY ROAD SAN MARTIN, CA 95046 |
| PROPERTY OWNER: | RRRS INC (DBA) SAN MARTIN GAS & MARKET 13235 MONTEREY ROAD SAN MARTIN, CA 95046 |
| PROJECT CONTACT: | CALCRAFT CORPORATION ATTN: THOMAS SERNA 1426 S. WILLOW AVE. RIALTO, CA 92376 909-879-2900 EXT 125 |
| APN#: | 779-10-017 |
| EXISTING USE: | 76 SERVICE STATION |
| PROPOSED USE: | CHEVRON SERVICE STATION |
| ZONING DISTRICT: | RR-5AC-SM |

SCOPE OF WORK:

- REMOVE EXISTING CANOPY SIGNS (TYP. OF 2)
- REMOVE EXISTING BUILDING SIGN.
- REMOVE EXISTING METAL M.I.D. POLE SIGN CABINETS AND POLES.
- INSTALL NEW 3'-0" HIGH "ACM" WITH CHEVRON IMAGE PACKAGE TO EXISTING METAL CANOPY.
- INSTALL 21" HIGH L.E.D. ILLUMINATED "CHEVRON" WORDMARK CANOPY SIGN (TYP OF 2).
- INSTALL 22" HIGH L.E.D. ILLUMINATED CHEVRON HALLMARK CANOPY SIGN.
- INSTALL VINYL CLEARANCE DECALS TO CANOPY (TYP OF 2).
- INSTALL NEW ROUND PLASTIC COLUMN CLADDING TO (E) METAL COLUMN (TYP OF 4).
- INSTALL NEW PUMP I.D. FLAGS TO COLUMN CLADDING. (TYP OF 8).
- INSTALL 3'x3' P.O.S. UNIT (TYP OF 2)
- INSTALL CHEVRON STANDARD TRASH VALET UNITS AT DISPENSER (TYP OF 4).
- PRESSURE WASH AND PAINT (E) BUILDING PER CHEVRON IMAGE STANDARDS.
- INSTALL NEW "EXTRA MILE" BUILDING SIGN.
- INSTALL NEW C-60 LED ILLUMINATED M.I.D. POLE SIGN CABINETS AND POLE.
- PAINT ALL SITE EQUIPMENT CHEVRON COLOR SCHEME.

SITE PLAN
SCALE: 1/16" = 1'-0"

| EXISTING SIGN SUMMARY | | | | |
|--|---|--------------------|---------|---------------|
| EXISTING SIGN SQUARE FOOTAGES ARE APPROXIMENTS | | | | |
| QTY. | DESCRIPTION | SIZE | SQ. FT. | TOTAL SQ. FT. |
| E1 (1) | POLE MOUNTED PRICE SIGN (ILLUMINATED) | 7'-3 3/8" x 15'-6" | 102.85 | 102.85 |
| E2 (1) | MAIN BUILDING SIGN (NON-ILLUMINATED) | 20'-5" x 2'-0" | 40.83 | 40.83 |
| E3 (2) | 76 CANOPY SIGNS (ILLUMINATED) | 33 1/2" DIA | 6.00 | 12.00 |
| TOTAL SQUARE AREA | | | 149.68 | 155.68 |
| PROPOSED SIGN SUMMARY | | | | |
| QTY. | DESCRIPTION | SIZE | SQ. FT. | TOTAL SQ. FT. |
| 1 (2) | CHEVRON 21" WORDMARK (L.E.D. ILLUMINATED) | 9'-6 5/8" x 1'-9" | 16.70 | 33.40 |
| 2 (1) | CHEVRON 22" HALLMARK (L.E.D. ILLUMINATED) | 1'-10" x 2'-3/4" | 3.78 | 3.78 |
| 3 (1) | C-60 POLE PRICE SIGN (L.E.D. ILLUMINATED) | 5'-7" x 17'-5" | 97.49 | 97.49 |
| 4 (1) | "EXTRA MILE" BUILDING SIGN (L.E.D. ILLUMINATED) | 8'-10" x 4'-2" | 36.80 | 36.80 |
| TOTAL SQUARE AREA | | | 154.77 | 171.47 |



(EXISTING) NORTH + EAST ELEVATION



(EXISTING) SOUTH + EAST ELEVATION

CHEVRON COLORS

| | |
|--|-------------------------|
| | CHEVRON BLUE |
| | CHEVRON CYAN |
| | CHEVRON SILVER |
| | CHEVRON DARK RED |
| | CHEVRON RED |
| | CHEVRON CVX GREEN |
| | CHEVRON SOUTHERN BREEZE |
| | CHEVRON STONE GRAY |

PROPRIETARY AND CONFIDENTIAL INFORMATION

THIS DOCUMENT AND THE INFORMATION HEREIN RELATING TO CALCRAFT CORPORATION AND ITS CLIENT HAS BEEN FURNISHED IN CONFIDENCE FOR THE PRIVATE USE OF AUTHORIZED PERSONNEL. NO PART HEREOF SHALL BE COPIED, DUPLICATED, DISTRIBUTED, DISCLOSED OR MADE AVAILABLE TO OTHERS OR USED TO ANY EXTENT WHATSOEVER EXCEPT AS EXPRESSLY AUTHORIZED IN WRITING BY CALCRAFT CORPORATION AND ITS CLIENT. ANY PERSON, FIRM OR CORPORATION RECEIVING THIS DOCUMENT, HOWEVER OBTAINED, SHALL BY VIRTUE HEREOF BE DEEMED TO HAVE AGREED TO THE FOREGOING RESTRICTIONS.

CALCRAFT CORPORATION
© COPYRIGHT PROTECTED 2009

| △ | | | |
|------|------|-------------|----|
| △ | | | |
| △ | | | |
| REV. | DATE | DESCRIPTION | BY |

CALCRAFT.com

1426 South Willow Avenue, Rialto, CA 92376 - ph 909 879 2900 fax 909 879 2910
www.calcrafft.com - State contractor license #872310

SCALE: 1/4" = 1'-0" U.N.
DRAWN BY: TSERNA
DATE: 6/21/19
CHECKED BY:
DATE:

LOCATION 13225 MONTEREY ROAD
SAN MARTIN, CA 95046

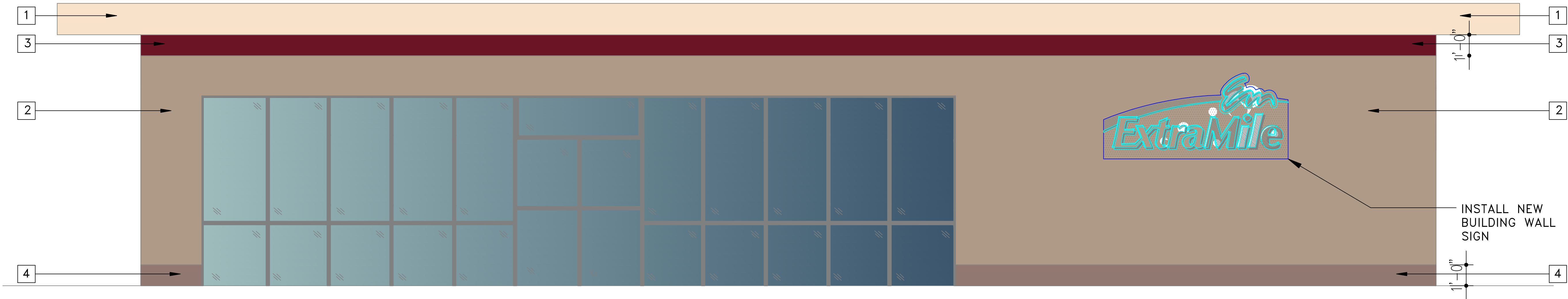
TITLE **SAN MARTIN GAS & MARKET**
(E) 76 SERVICE STATION RE-IMAGE TO CHEVRON
RE-IMAGE ELEVATIONS OF (E) CANOPY

| | |
|-------------------------|--------------------------|
| HAND — | JOB NO. D19080 |
| DRWG. NO. CA1 | REV. |
| SHEET | OF |



EXISTING FRONT ELEVATION

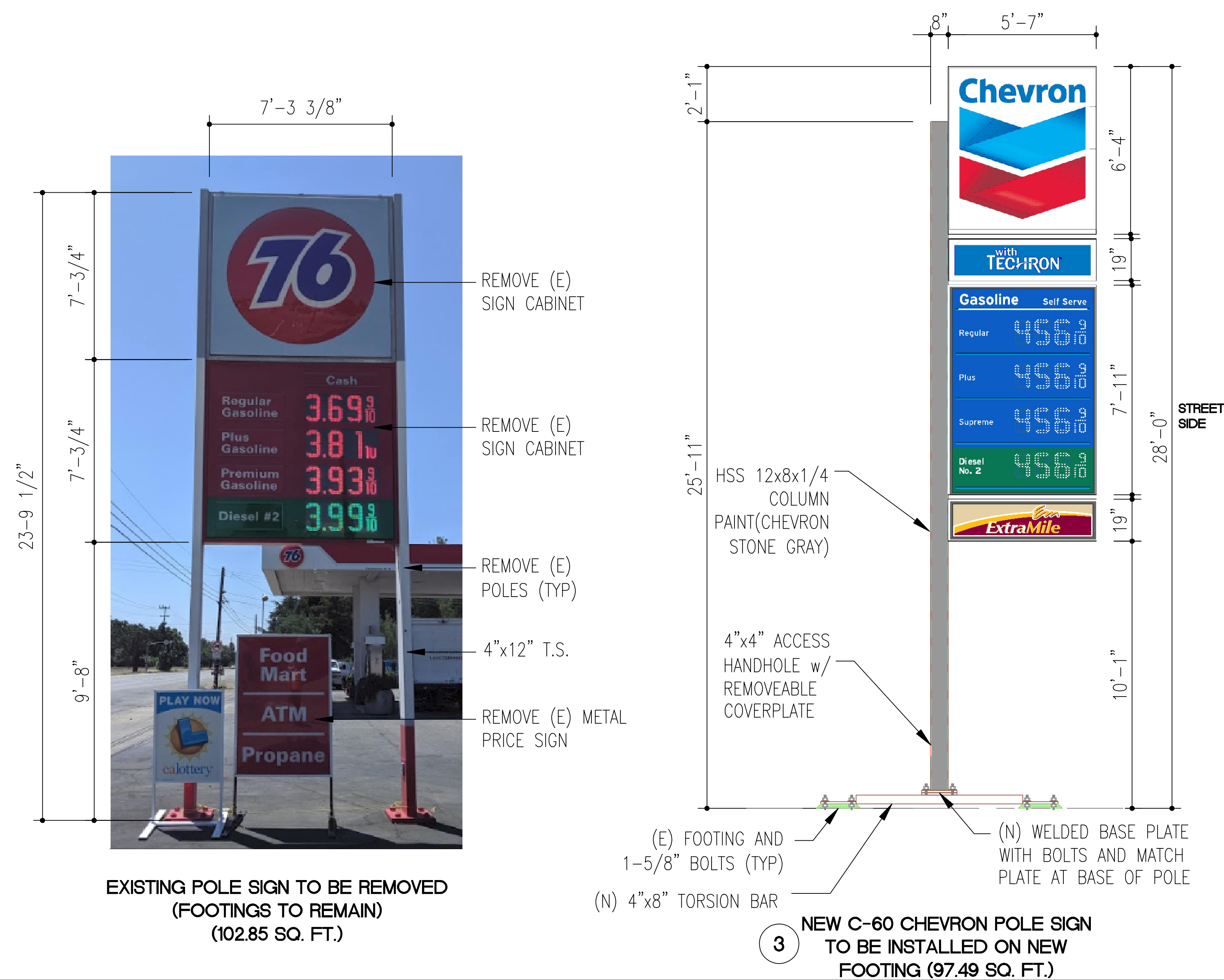
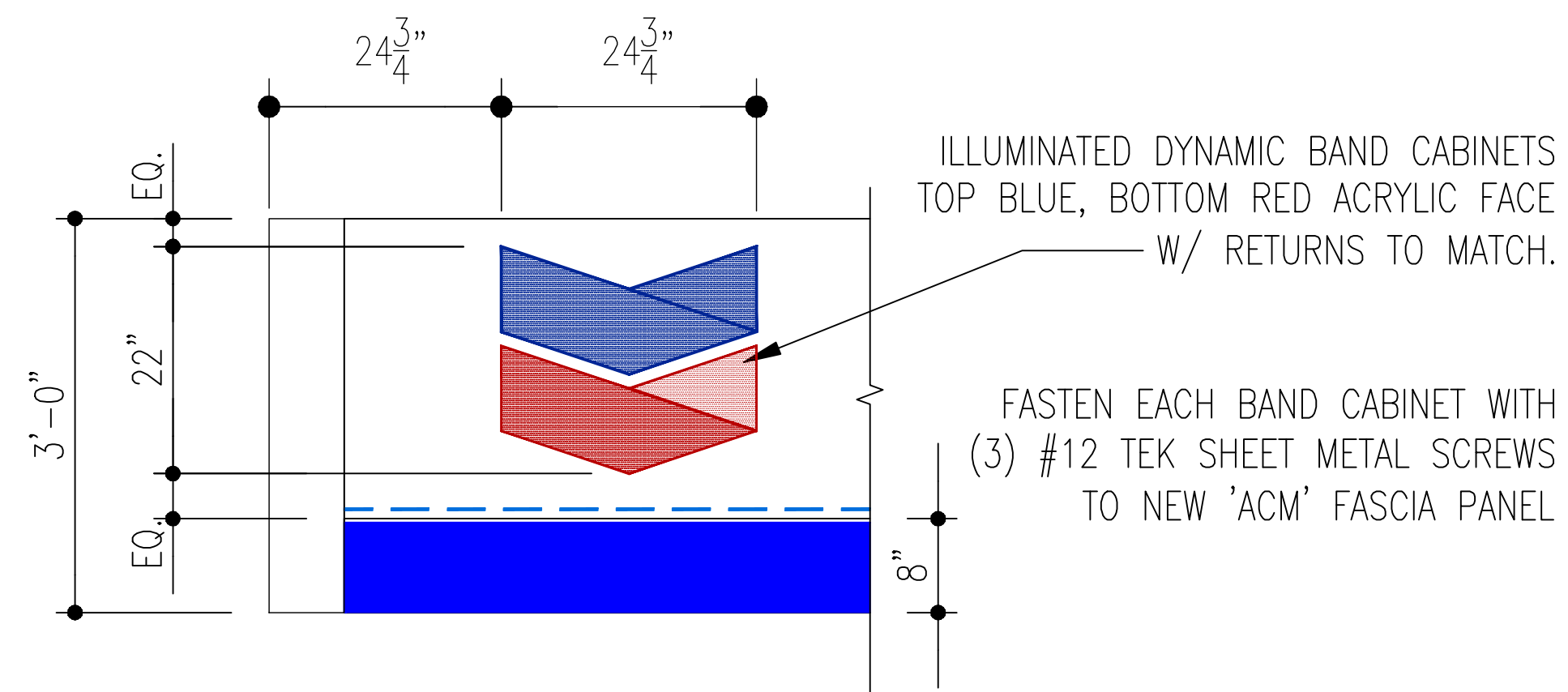
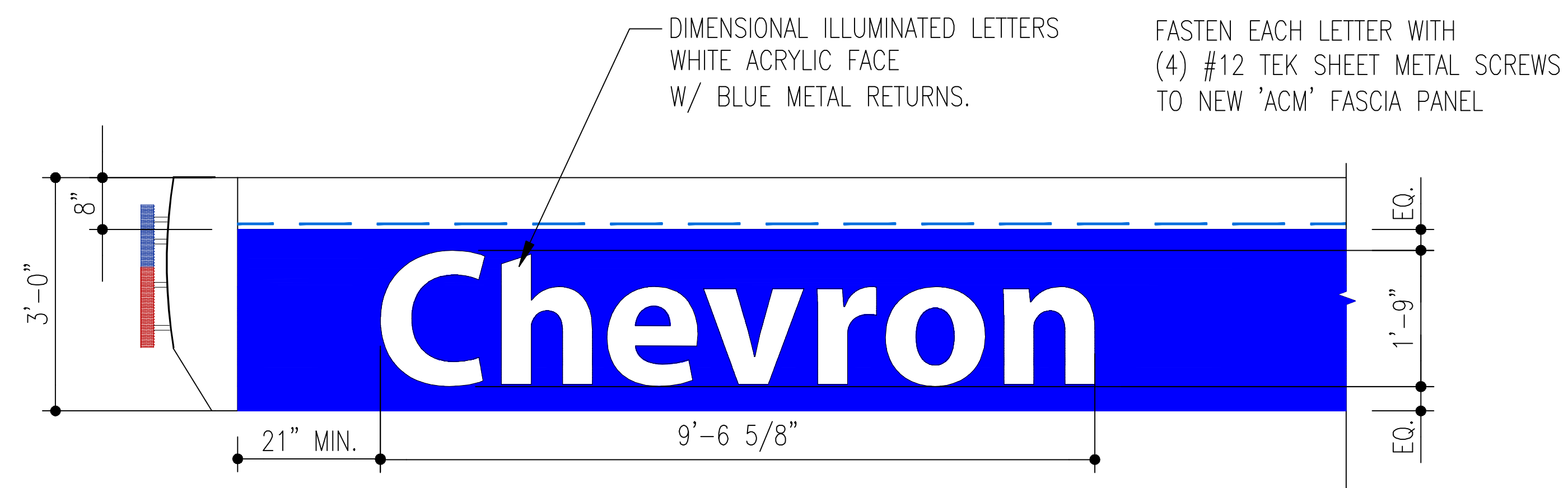
NOTE:
BUILDING SIGNS TO BE REMOVED and BUILDING TO BE PAINTED
PER NEW CHEVRON IMAGE WALL COLOR SCHEME AS SHOWN
BELOW







EXISTING FRONT ELEVATION
TO BE PAINTED PER NEW CHEVRON IMAGE COLOR SCHEME

CHEVRON BUILDING WALL PAINT COLOR SCHEME (TYP ALL SIDES)

| | |
|---|---|
| 1 | CAFE AU LAIT (URETHANE SEMI GLOSS) A4W-D80069 |
| 2 | NUTMEG (URETHANE SEMI GLOSS) A4W-D80070 |
| 3 | CHILLED WINE (URETHANE SEMI GLOSS) A4N-D10101 |
| 4 | MOCHA (URETHANE SEMI GLOSS) A4N-D80071 |



| ExtraMile Identity Colors | | |
|---|----------------------|--|
| Color Palette | Name | Color ID |
|  | Butterscotch | PMS 7408 |
|  | Maroon | PMS 209 |
|  | Natural Beige | PMS 4755 |
|  | Opaque Natural Beige | To match Spraylat Lacry L5-9358 acrylic paint |

CHEVRON COLORS


| | |
|---|-------------------------|
|  | CHEVRON BLUE |
|  | CHEVRON CYAN |
|  | CHEVRON SILVER |
|  | CHEVRON DARK RED |
|  | CHEVRON RED |
|  | CHEVRON CVX GREEN |
|  | CHEVRON SOUTHERN BREEZE |
|  | CHEVRON STONE GRAY |

PROPRIETARY AND CONFIDENTIAL INFORMATION

PROPRIETARY AND CONFIDENTIAL INFORMATION

THIS DOCUMENT AND THE INFORMATION HEREIN RELATING TO CALCRAFT CORPORATION AND ITS CLIENT HAS BEEN FURNISHED IN CONFIDENCE FOR THE PRIVATE USE OF AUTHORIZED PERSONNEL. NO PART HEREOF SHALL BE COPIED, DUPLICATED, DISTRIBUTED, DISCLOSED OR MADE AVAILABLE TO OTHERS OR USED TO ANY EXTENT WHATSOEVER EXCEPT AS EXPRESSLY AUTHORIZED IN WRITING BY CALCRAFT CORPORATION AND ITS CLIENT. ANY PERSON, FIRM OR CORPORATION RECEIVING THIS DOCUMENT, HOWEVER OBTAINED, SHALL BY VIRTUE HEREOF BE DEEMED TO HAVE AGREED TO THE FOREGOING RESTRICTIONS.

CALCRAFT CORPORATION
© COPYRIGHT PROTECTED 2009

| | | | |
|---|-------------|--------------------|-----------|
|  | | | |
|  | | | |
|  | | | |
|  | | | |
|  | | | |
| REV. | DATE | DESCRIPTION | BY |



1426 South Willow Avenue, Rialto, CA 92376 - ph 909 879 2900 fax 909 879 2910
www.calcraft.com - State contractor license #872310

SCALE: 1" = 1'-0" U.N.

DRAWN BY: TSERNA


DATE: 6/21/19

CHECKED BY:

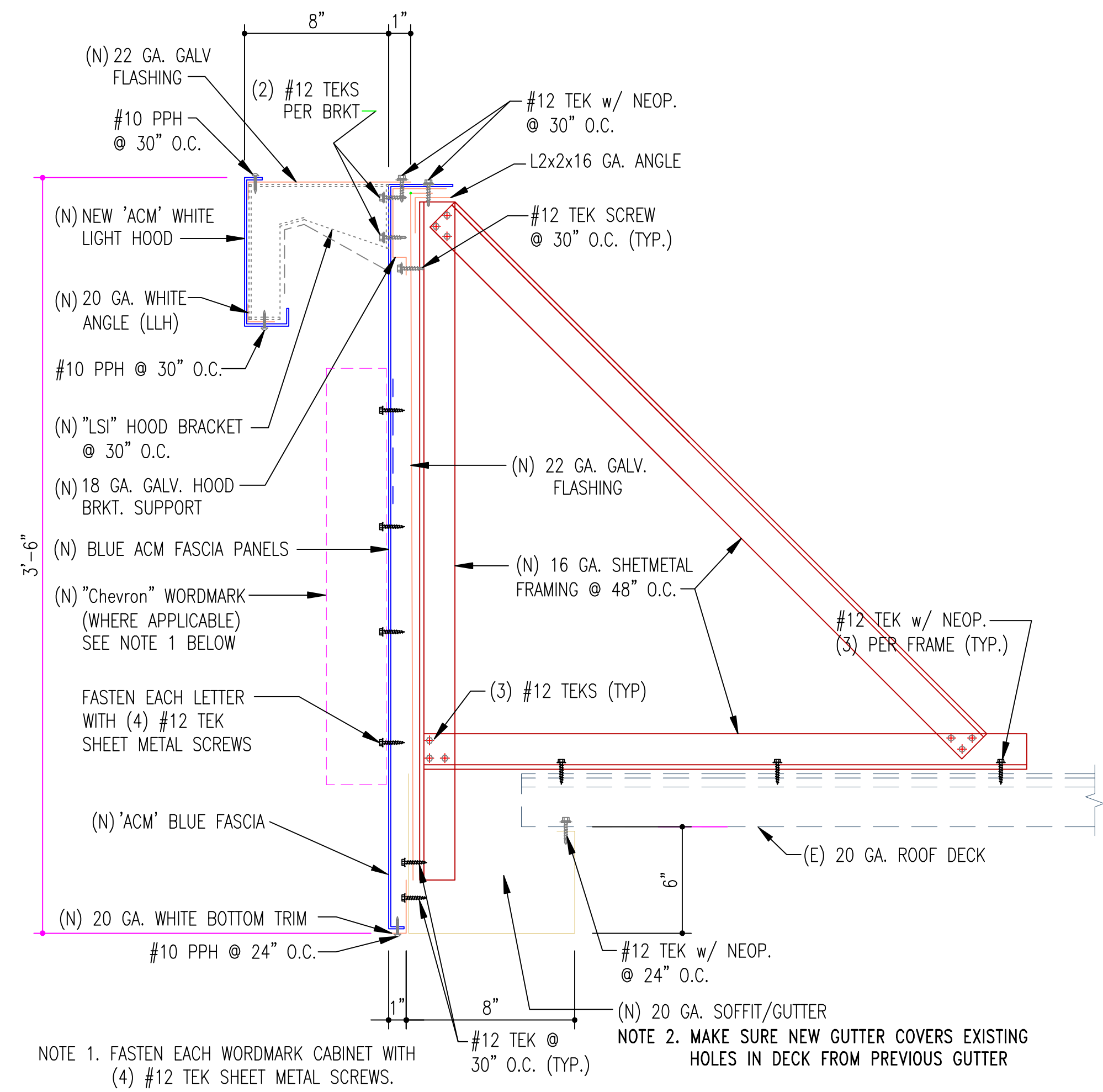
DATE:

| | |
|----------|---|
| LOCATION | 13235 MONTEREY ROAD SAN MARTIN, CA 95046 |
|----------|---|

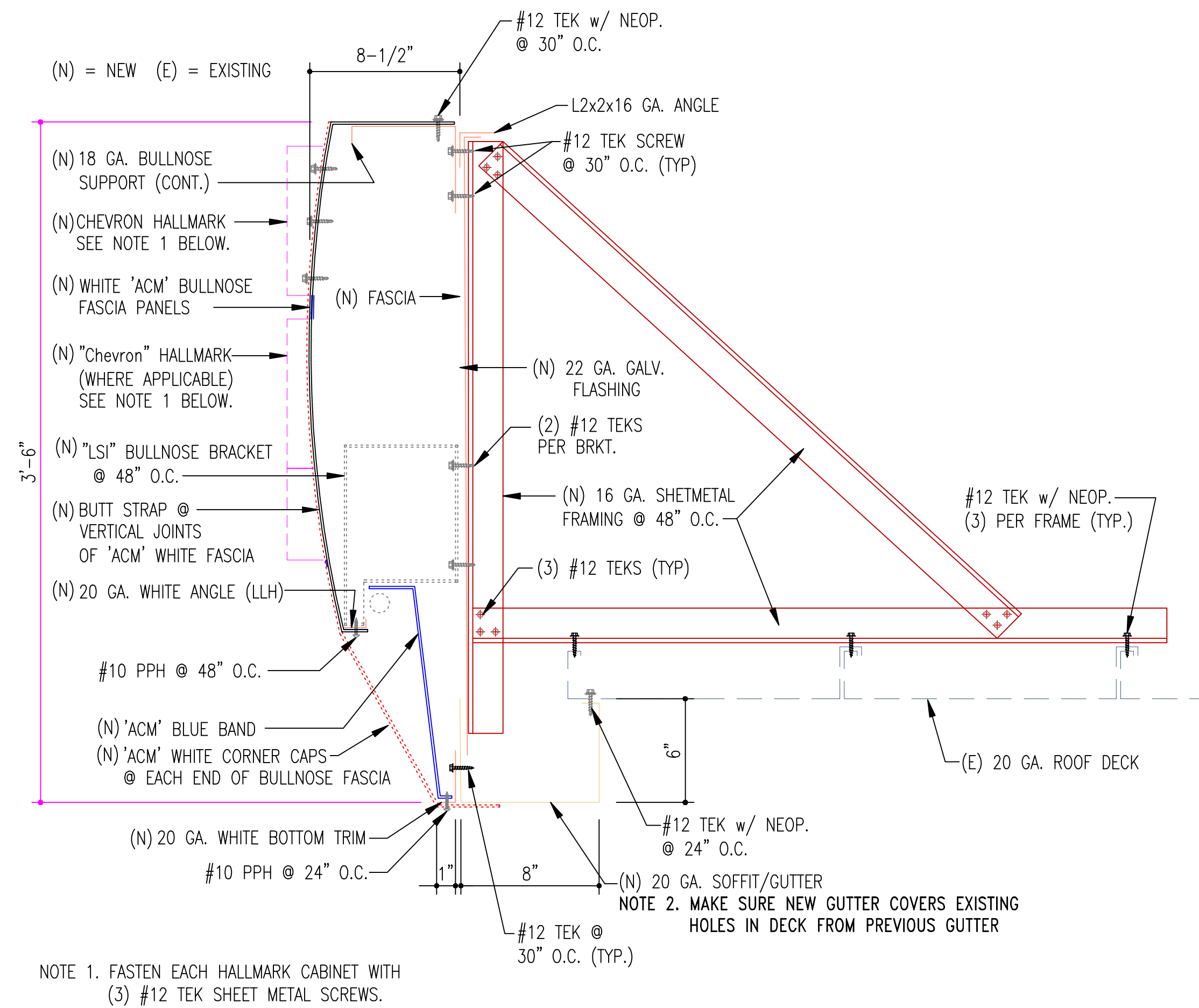
TITLE **SAN MARTIN GAS & MARKET**
(E) 76 SERVICE STATION RE-IMAGE TO CHEVRON
SIGN DETAILS

| | | |
|------------|--------------------------|--|
| HAND — | JOB NO. D19080 | |
| ET /RON | DRWG. NO. SN1 | REV.  |
| | SHEET | OF |

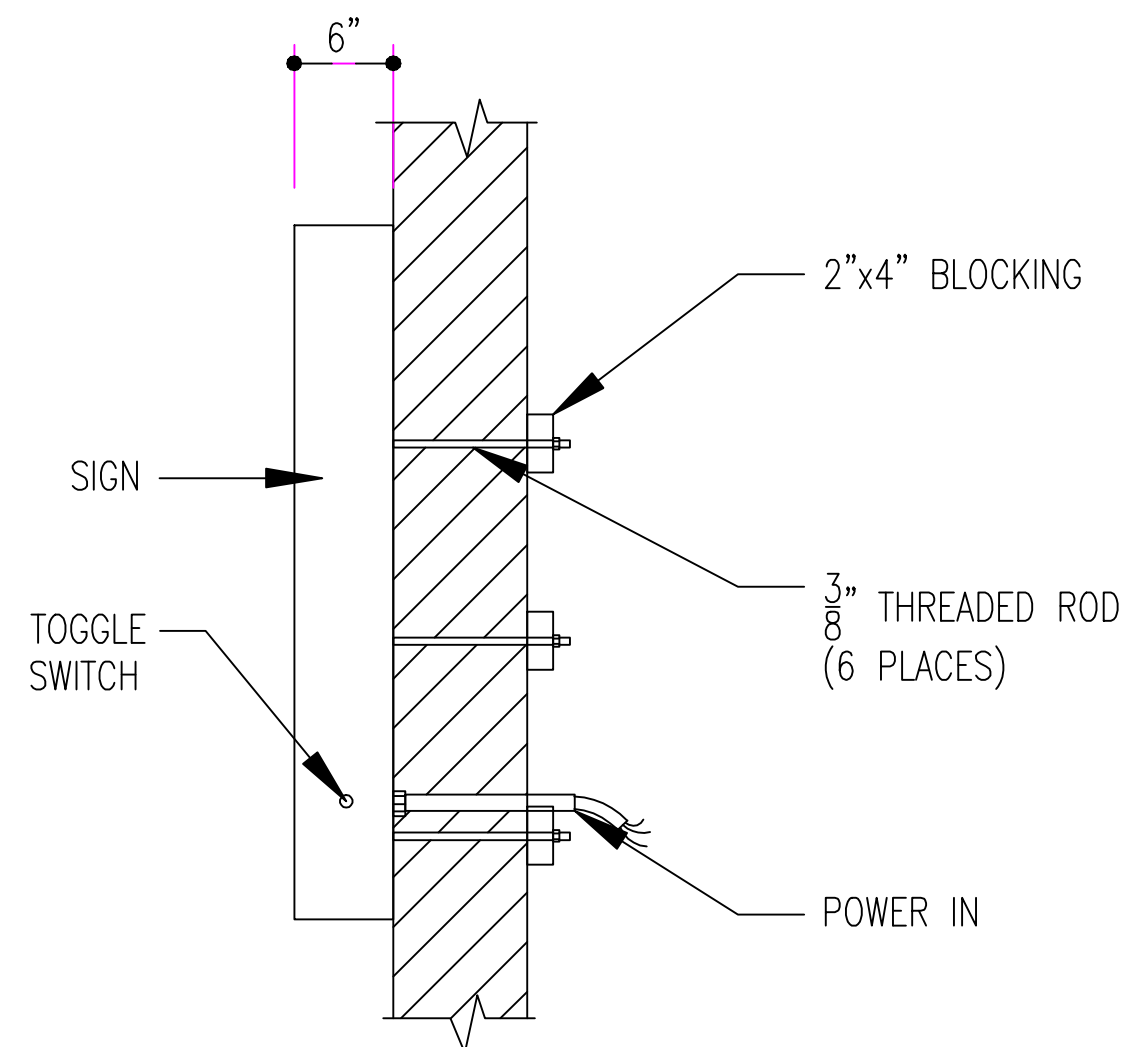
(N) = NEW (E) = EXISTING



1 'ACM' and WORDMARK SIGN
CONNECTION DETAIL



2 'ACM' and HALLMARK SIGN
CONNECTION DETAIL



4 'EXTRA MILE' BUILDING SIGN
CONNECTION DETAIL

PROPRIETARY AND CONFIDENTIAL INFORMATION

THIS DOCUMENT AND THE INFORMATION HEREIN RELATING TO CALCRAFT CORPORATION AND ITS CLIENT HAS BEEN FURNISHED IN CONFIDENCE FOR THE PRIVATE USE OF AUTHORIZED PERSONNEL. NO PART HEREOF SHALL BE COPIED, DUPLICATED, DISTRIBUTED, DISCLOSED OR MADE AVAILABLE TO OTHERS OR USED TO ANY EXTENT WHATSOEVER EXCEPT AS EXPRESSLY AUTHORIZED IN WRITING BY CALCRAFT CORPORATION AND ITS CLIENT. ANY PERSON, FIRM OR CORPORATION RECEIVING THIS DOCUMENT, HOWEVER OBTAINED, SHALL BY VIRTUE HEREOF BE DEEMED TO HAVE AGREED TO THE FOREGOING RESTRICTIONS.

CALCRAFT CORPORATION
© COPYRIGHT PROTECTED 2009

| REV. | DATE | DESCRIPTION | BY |
|------|------|-------------|----|
| △ | | | |
| △ | | | |
| △ | | | |

CALCRAFT.com

1426 South Willow Avenue, Rialto, CA 92376 - ph 909 879 2900 fax 909 879 2910
www.calcrafft.com - State contractor license #872310

SCALE: 1" = 1'-0" U.N.

DRAWN BY: TSERNA

DATE: 6/21/19

CHECKED BY:

DATE:

LOCATION 13235 MONTEREY ROAD
SAN MARTIN, CA 95046

TITLE **SAN MARTIN GAS & MARKET**
(E) 76 SERVICE STATION RE-IMAGE TO CHEVRON
CONNECTION DETAILS

HAND
—

JOB NO.
D19080

DRWG. NO.
SN2

REV.
OF