

#	BOTANICAL NAME	COMMON NAME	CAL (IN)	ACTION
59	QUERCUS AGRIFOLIA	COAST LIVE OAK	11"	REMOVE
60	SCHINUS MOLLE	PERUVIAN PEPPER	16"	REMOVE
61	SCHINUS MOLLE	PERUVIAN PEPPER	15"	REMOVE
62	SCHINUS MOLLE	PERUVIAN PEPPER	19"	REMOVE
63	SCHINUS MOLLE	PERUVIAN PEPPER	22"	REMOVE
64	QUERCUS AGRIFOLIA	COAST LIVE OAK	26"	REMOVE

NOTE: ALL EXISTING TREE IDENTIFICATION NUMBERS MODIFIED TO CORRESPOND WITH ARBORIST REPORT

-	ACER PALMATUM	JAPANESE MAPLE	6"	REMOVE
-	ACER PALMATUM	JAPANESE MAPLE	6"	REMOVE
-	ACER PALMATUM	JAPANESE MAPLE	10"	REMOVE
-	ACER PALMATUM	JAPANESE MAPLE	10"	REMOVE

LEGEND

LANDSCAPE DEMO AREA CLEAR AND GRUB

HARDSCAPE DEMO AREA

BUILDING DEMO AREA SEE ARCHITECTURE DRAWINGS

(E) EXISTING TREE TO REMAIN (PROTECT IN PLACE)

(R) EXISTING TREE TO BE REMOVED

(T) EXISTING TREE TO BE REMOVED AND TRANSPLANTED ELSEWHERE ON CAMPUS

EXISTING TREE OUTSIDE OF PROJECT LIMITS

CONSTRUCTION/ PROTECTION FENCE

455 LAMBERT AVENUE PALO ALTO, CA 94306
WWW.CAWARCHITECTS.COM • 650.328.1818 • FAX: 650.328.1888

COPYRIGHT 2021 BY CAW ARCHITECTS, INC.

WILLIAM RAWN ASSOCIATES | Architects, Inc.
10 Post Office Sq.
Suite 1010
Boston, MA 02109

STAMP

CONSULTANTS

2200 Bridgeway
Sausalito, California
94965-1750
United States
www.swagroup.com
+1.415.332.5100 o

△ MILESTONE	DATE
ASA SUBMISSION	7/31/2019
ASA RESUBMISSION 1	9/06/2019
ASA RESUBMISSION 2	11/20/2019
ASA RESUBMISSION 3	10/19/2020
ASA RESUBMISSION 4	02/28/2022

PROJECT NAME

GEORGE P. SHULTZ BUILDING

HOOVER INSTITUTION

426 GALVEZ MALL

STANFORD, CA 93405

SHEET TITLE

TREE PROTECTION AND DEMOLITION PLAN

PROJECT NO. STFS802

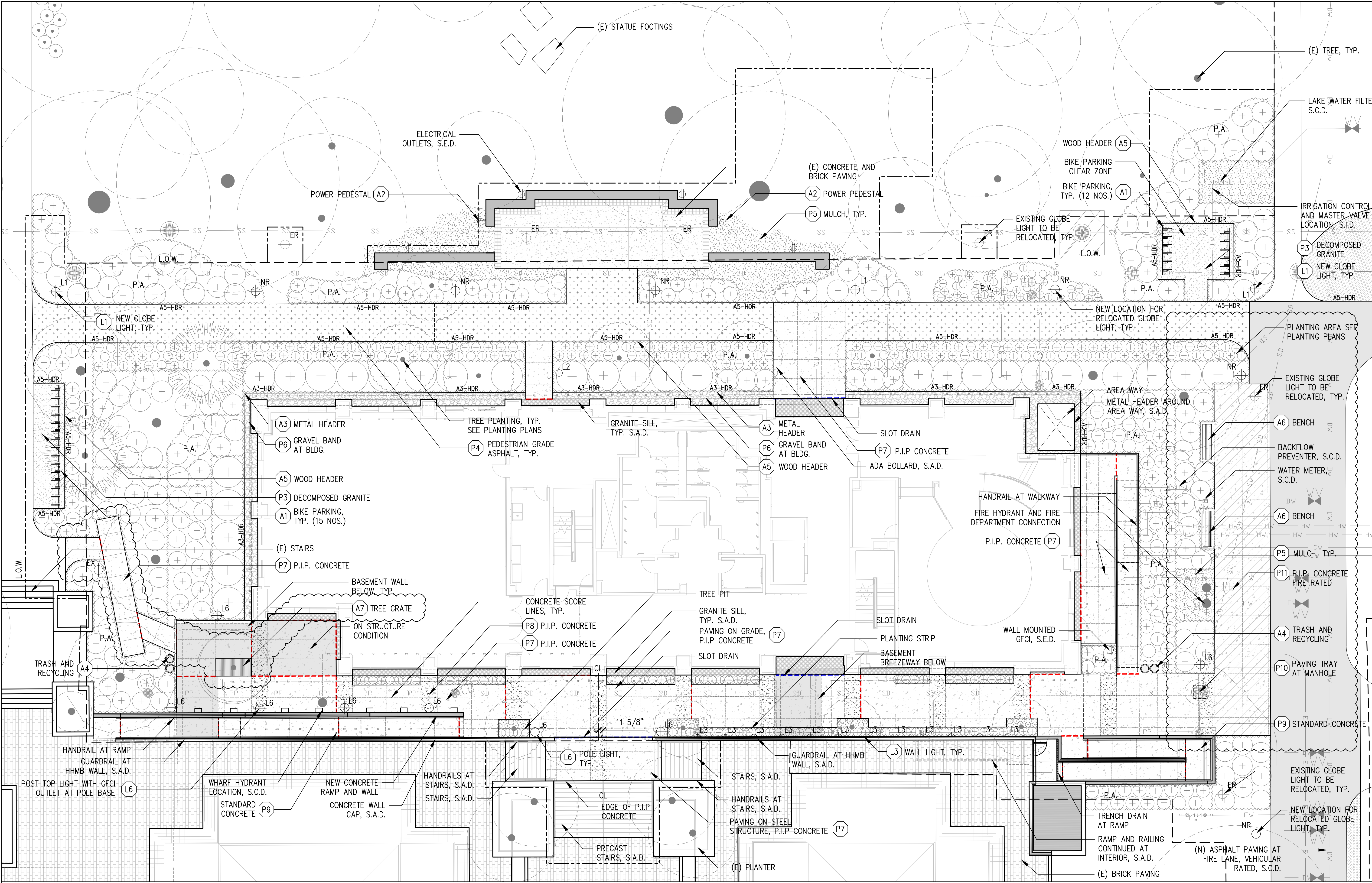
DRAWN BY C. LINDLEY

CHECKED BY W. HYNES

SHEET

L1.1

NOT FOR CONSTRUCTION



PAVING SCHEDULE (P)	
CODE	DESCRIPTION
P3	DECOMPOSED GRANITE
P4	ASPHALT PAVING – PEDESTRIAN
P5	LANDSCAPE MULCH
P6	GRAVEL

--- PAVING EXPANSION JOINT. EXPANSION JOINTS ALSO OCCUR AT ALL VERTICAL WALL/PAVING ABUTMENTS

--- SLOT DRAIN

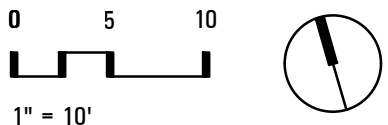
PAVING SCHEDULE (P)	
CODE	DESCRIPTION
P7	COLORLED CONCRETE (LT ACID ETCH)
P8	COLORLED CONCRETE (MED ACID ETCH)
P9	STANDARD CONCRETE
P10	PAVER TRAY AT MANHOLE
P10	COLORLED CONCRETE (FIRE RATED)

LIGHTING SCHEDULE (L)	
CODE	DESCRIPTION
L1	NEW GLOBE LIGHT
L2	BOLLARD LIGHT
L3	SURFACE MOUNTED WALL LIGHT
L6	POLE LIGHT

LIGHTING SCHEDULE (L) Cont.	
CODE	DESCRIPTION
EX	EXISTING GLOBE LIGHT TO REMAIN IN PLACE
ER	EXISTING GLOBE LIGHT TO BE RELOCATED
NR	NEW LOCATION FOR RELOCATED GLOBE LIGHT

AMENITY SCHEDULE (A)	
CODE	DESCRIPTION
A1	BIKE RACK
A2	POWER PEDESTAL
A3	METAL HEADER (A3-HDR)
A4	WASTE RECEPTACLES
A5	WOOD HEADER (A5-HDR)
A6	BENCH
A7	TREE GRATE

NOTE: FOR FULL MATERIAL SCHEDULES AND ABBREVIATIONS, SEE SHEET L2.0



CAW
ARCHITECTS

455 LAMBERT AVENUE PALO ALTO, CA 94306
WWW.CAWARCHITECTS.COM • 650.328.1818 • FAX: 650.328.1888

COPYRIGHT 2017 BY CAW ARCHITECTS, INC.

WILLIAM RAWN ASSOCIATES | Architects, Inc.
10 Post Office Sq.
Suite 1010
Boston, MA 02109

STAMP



CONSULTANTS

swa

2200 Bridgeway
Sausalito, California
94965-1750
United States
www.swagroup.com
+1.415.332.5100 o

△ MILESTONE	DATE
ASA SUBMISSION	7/31/2019
ASA RESUBMISSION 1	9/06/2019
ASA RESUBMISSION 2	11/20/2019
ASA RESUBMISSION 3	10/19/2020
ASA RESUBMISSION 4	02/28/2022

PROJECT NAME

GEORGE P. SHULTZ
BUILDING

HOOVER INSTITUTION

426 GALVEZ MALL

STANFORD, CA 93405

SHEET TITLE

LANDSCAPE SITE
PLAN

PROJECT NO. STFS802

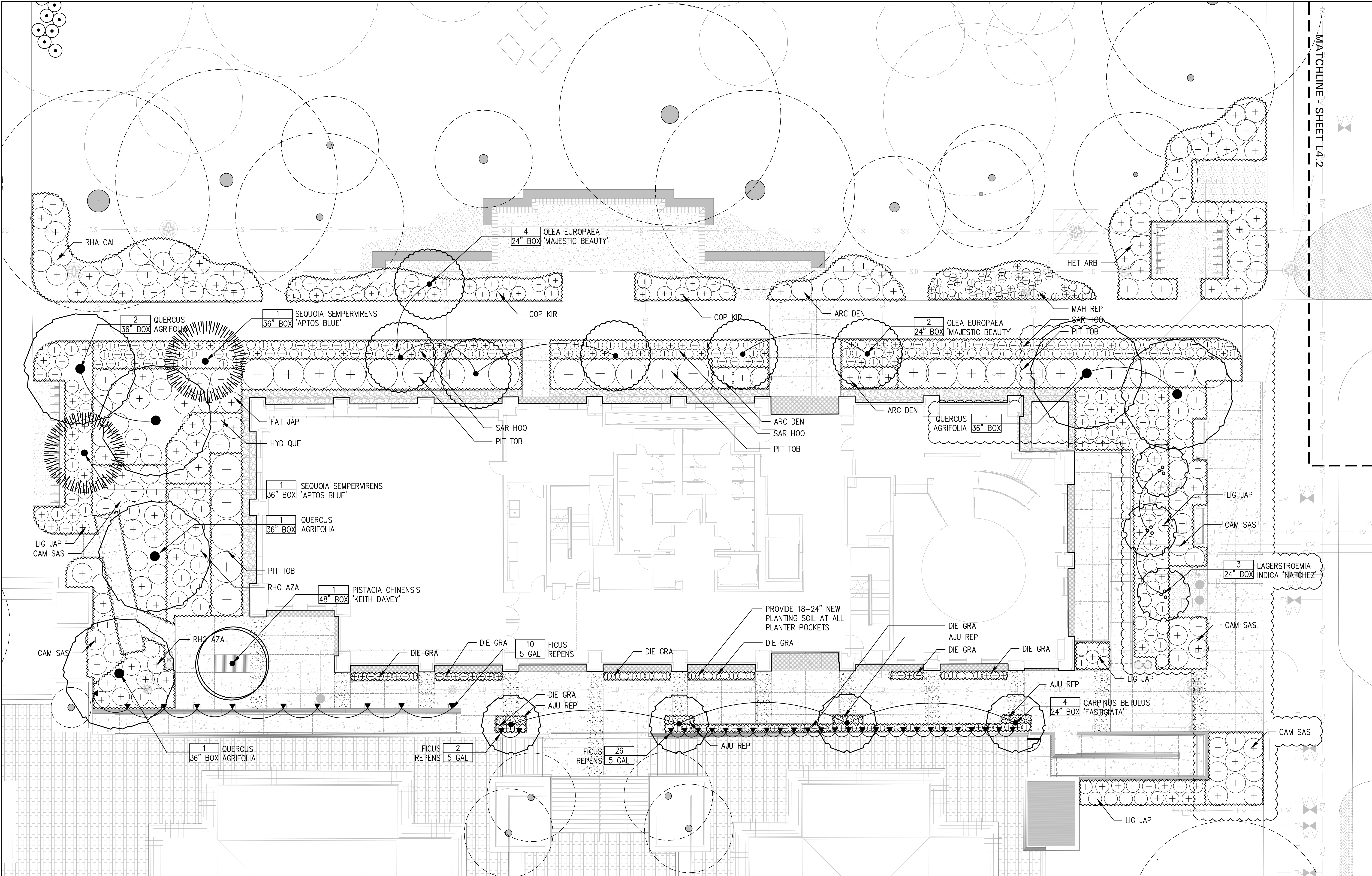
DRAWN BY C. LINDLEY

CHECKED BY W. HYNES

SHEET

L2.1

NOT FOR CONSTRUCTION

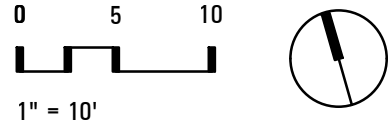


NOTES:
1. FOR PLANT SIZE, SPACING AND NOTES, SEE SHEET L4.0
2. SEE IRRIGATION PLAN SHEET L3.1 FOR IRRIGATION HYDROZONES

TREES CARPINUS BETULUS 'FASTIGIATA' LAGERSTROEMIA INDICA 'NATCHEZ' OLEA EUROPAEA 'MAJESTIC BEAUTY' PISTACIA CHINENSIS 'KEITH DAVEY' QUERCUS AGRIFOLIA SEQUOIA SEMPERVIRENS 'APTOS BLUE'	EUROPEAN HORNBEAM NATCHEZ CRAPMYRTLE MAJESTIC BEAUTY FRUITLESS OLIVE FRUITLESS CHINESE PISTACHE COAST LIVE OAK COAST REDWOOD
VINES FICUS REPENS	CLIMBING FIG

SHRUBS AJU REP ARC DEN CAM SAS COP KIR DIE GRA FAT JAP FUC GAR HET ARB HYD QUE	AJUGA REPTANS ARCTOSTAPHYLOS DENSIFLORA CAMELLIA SASANQUA 'YULETIDE' COPROSMA KIRKII DIETES GRANDIFLORA FATSIA JAPONICA FUCHSIA 'GARTENMEISTER BONSTEDT' HETEROMELES ARBUTIFOLIA HYDRANGEA QUERCIFOLIA	BUGLE HOWARD MCMINN MANZANITA YULETIDE CAMELLIA CREEPING MIRROR PLANT FORTNIGHT LILY JAPANESE ARALEA GARTENMEISTER FUCHSIA TOYON OAK LEAF HYDRANGEA
--	--	---

SHRUBS (CONT.) LIG JAP MAH REP PIT TOB RAM CAL RHO AZA SAR HOO	LIGUSTRUM JAPONICUM 'TEXANUM' MAHONIA REPENS PITTOSPORUM TOBIRA RHAMNUS CALIFORNICA RHODODENDRON SARCOCOCCA HOOKERIANA VAR. HUMILIS	WAXLEAF PRIVET CREEPING MAHONIA JAPANESE PITTOSPORUM COFFEEBERRY RHODODENDRON, AZALEA SWEET BOX
---	--	--



CAW
ARCHITECTS

455 LAMBERT AVENUE PALO ALTO, CA 94306
WWW.CAWARCHITECTS.COM • 650.328.1818 • FAX: 650.328.1888

COPYRIGHT 2017 BY CAW ARCHITECTS, INC.

WILLIAM RAWN ASSOCIATES | Architects, Inc.
10 Post Office Sq.
Suite 1010
Boston, MA 02109

STAMP



CONSULTANTS

swa

2200 Bridgeway
Sausalito, California
94965-1750
United States
www.swagroup.com
+1.415.332.5100 o

△ MILESTONE	DATE
ASA SUBMISSION	7/31/2019
ASA RESUBMISSION 1	9/06/2019
ASA RESUBMISSION 2	11/20/2019
ASA RESUBMISSION 3	10/19/2020
ASA RESUBMISSION 4	02/28/2022

PROJECT NAME

GEORGE P. SHULTZ
BUILDING

HOOVER INSTITUTION

426 GALVEZ MALL

STANFORD, CA 93405

SHEET TITLE

PLANTING PLAN

PROJECT NO. STFS802

DRAWN BY C. LINDLEY

CHECKED BY W. HYNES

SHEET

L4.1

NOT FOR CONSTRUCTION



MATCHLINE - SHEET L4.1

MATCHLINE - SHEET L4.1

NOTE: TREE PLANTING LOCATIONS TO
BE VERIFIED IN FIELD AND APPROVED
BY CAMPUS LANDSCAPE ARCHITECT
PRIOR TO INSTALLATION

QUERCUS	1
AGRIFOLIA	24" BOX

QUERCUS
AGRIFOLIA

1
24" BOX

1	QUERCUS
24" BOX	AGRIFOLIA

NOTES:

1. FOR PLANT SIZE, SPACING AND NOTES, SEE SHEET L4.0
2. SEE IRRIGATION PLAN SHEET L3.1 FOR IRRIGATION HYDROZONES

TREES	
CARPINUS BETULUS 'FASTIGIATA	EUROPEAN HORNBEAM
LAGERSTROEMIA INDICA 'NATCHEZ'	NATCHEZ CRAPEMYRTLE
OLEA EUROPEA 'MAJESTIC BEAUTY'	MAJESTIC BEAUTY FRUITLESS OLIVE
PISTACIA CHINENSIS 'KEITH DAVEY'	FRUITLESS CHINESE PISTACHE
QUERCUS AGRIFOLIA	COAST LIVE OAK
SEQUOIA SEMPERVIRENS 'APTOS BLUE'	COAST REDWOOD

VINES
FICUS REPENS

SHRUBS	
AJU REP	AJUGA REPTANS
ARC DEN	ARCTOSTAPHYLOS DENSIFLORA
CAM SAS	CAMELLIA SASANQUA 'YULETIDE'
COP KIR	COPROSMA KIRKII
DIE GRA	DIETES GRANDIFLORA
FAT JAP	FATSIA JAPONICA
FUC GAR	FUCHSIA 'GARTENMEISTER BONSTEDT'
HET ARB	HETEROMELES ARBUTIFOLIA
HYD QUE	HYDRANGEA QUERCIFOLIA

BUGLE
HOWARD MCMINN MANZANITA
YULETIDE CAMELLIA
CREEPING MIRROR PLANT
FORTNIGHT LILY
JAPANESE ARALEA
GARTENMEISTER FUCHSIA
TOYON
OAK LEAF HYDRANGEA

<u>SHRUBS (CONT.)</u>		
LIG JAP	LIGUSTRUM JAPONICUM 'TEXANUM'	WAXLEAF PRIVET
MAH REP	MAHONIA REPENS	CREeping MAHONIA
PIT TOB	PITTIOSPORUM TOBIRA	JAPANESE PITTIOSPORUM
RAM CAL	RHAMNUS CALIFORNICA	COFFEEBERRY
RHO AZA	RHOODODENDRON	RHOODODENDRON, AZALEA
SAR HOO	SARCOCOCCA HOOKERIANA VAR. HUMILIS	SWEET BOX

CAW
ARCHITECTS

455 LAMBERT AVENUE PALO ALTO, CA 94306
WWW.CAWARCHITECTS.COM • 650.328.1818 • FAX: 650.328.1888


WILLIAM RAWN ASSOCIATES | Architects, Inc.
10 Post Office Sq.
Suite 1010
Boston, MA 02109

STAMP



CONSULTANTS

swa 2200 Bridgeway
Sausalito, California
94965-1750
United States
www.swagroup.com
+1.415.332.5100 o

 MILESTONE	DATE
ASA SUBMISSION	7/31/2019
ASA RESUBMISSION 1	9/06/2019
ASA RESUBMISSION 2	11/20/2019
ASA RESUBMISSION 3	10/19/2020
ASA RESUBMISSION 4	02/28/2022

PROJECT NAME

GEORGE P. SHULTZ
BUILDING

HOOVER INSTITUTION

426 GALVEZ MALL

STANFORD, CA 93405

SHEET TITLE

PLANTING PLAN

PROJECT NO. STFS802

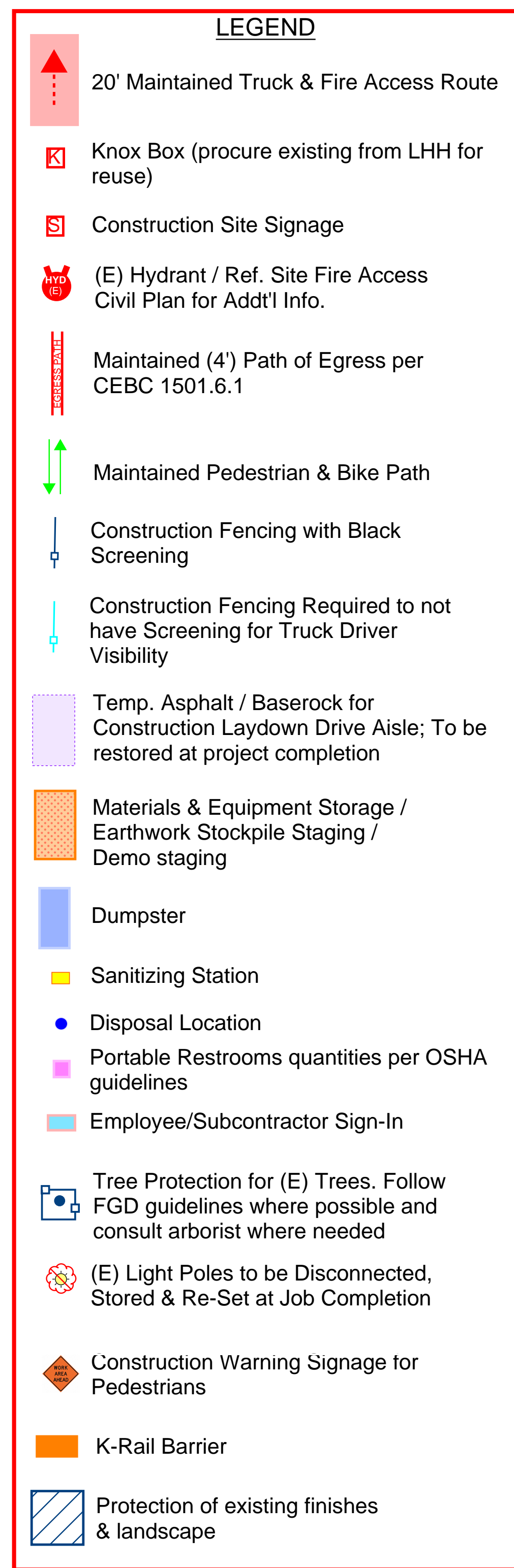
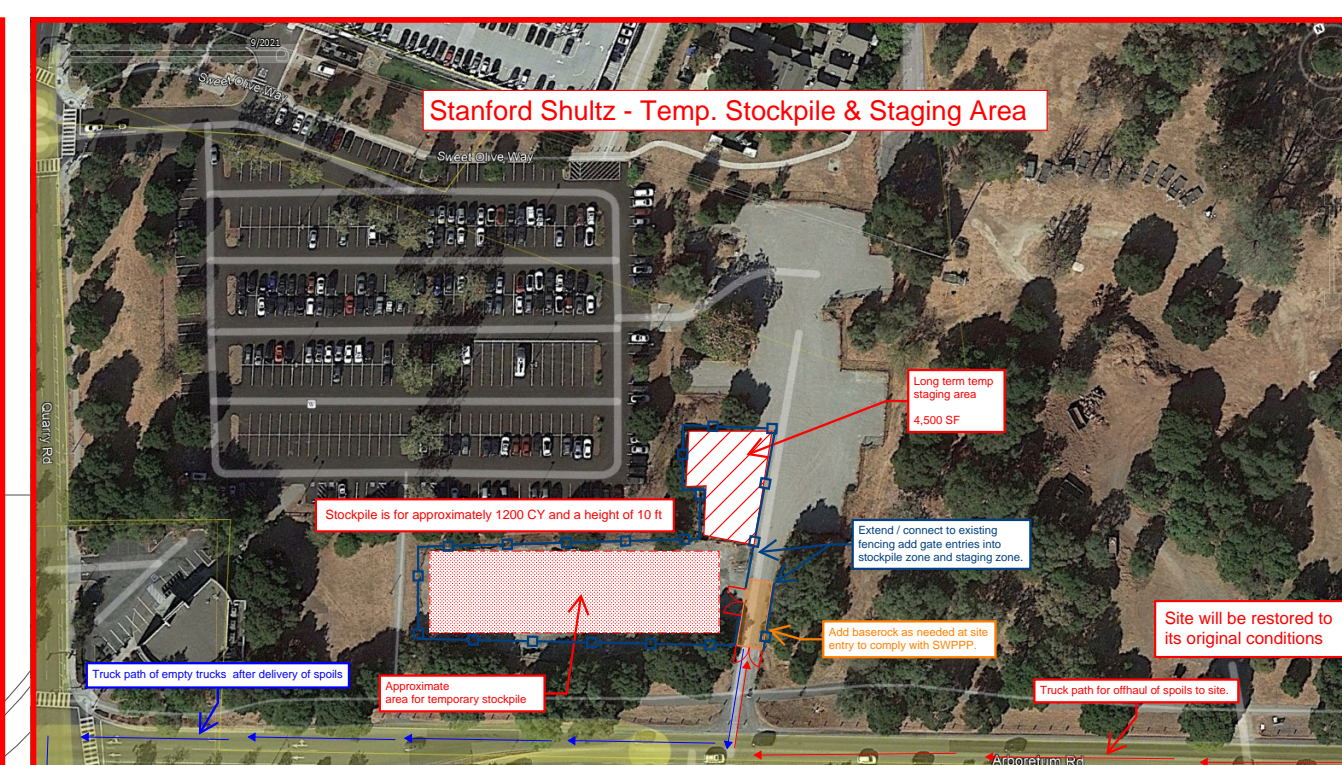
DRAWN BY C. LINDLEY

CHECKED BY W. HYNES

SHEET

L4.2

NOT FOR CONSTRUCTION



GENERAL NOTES:
CONTRACTOR SHALL FIELD VERIFY ALL JOB CONDITIONS AND DIMENSIONS, VARIATIONS THEREOF FROM THE DRAWINGS MUST BE REPORTED TO THE ARCHITECT.

DETAILS INDICATED ON THE DRAWINGS ARE REPRESENTATIVE AND TYPICAL. ALL ATTACHMENTS AND CONNECTIONS SHALL CONFORM TO BEST PRACTICE AND SHALL BE THE CONTRACTOR'S RESPONSIBILITY.

THIS DRAWING EMPLOYS IDEAS, DESIGNS, ARRANGEMENTS, PLANS AND SPECIFICATIONS WHICH ARE SOLELY THE PROPERTY OF DEVCON CONSTRUCTION INC., AND WHICH WERE DESIGNED, CREATED, EVOLVED AND DEVELOPED FOR USE SOLELY IN CONNECTION WITH THE SPECIFIED PROJECT. NO TRUFEER OF ANY RIGHTS THEREIN IS EITHER CORRECTED IN CLARITY HEREOF, AND ANY EXCEPT AS THE WRITER OF THIS DRAWING FOR DEVCON CONSTRUCTION INC. THE WRITER IS NOT TO BE DISCLOSED TO OTHERS, REPRODUCED OR COPIED IN WHOLE OR IN PART, OR USED IN THE FABRICATION OF CONSTRUCTION DETAILS, STUDY MODELS, FOUNDATIONS, OR ANY PORTIONS THEREOF, FOR OTHER THAN THE SPECIFIED CONSTRUCTION.

© DEVCON CONSTRUCTION, INC.

[illegible]

Construction Logistics Plan		
JOB NO. 20-193		SHEET NO. LOG-1 1 OF 1 SHEETS
DATE : 09/23/21		
DRAWN: EB		
CHECKED: EB		
ISSUE:		