



5-21-2019

LEGEND

- FOUND POINT IN MONUMENT CASTING (AS NOTED)
- SET 3/4" IP "PLS 6163" (OR SET POINT AS NOTED)
- FOUND POINT AS NOTED
- () RECORD DATA / REFERENCE
- WM WATER METER OR WATER VALVE BOX
- ⊕ FIRE HYDRANT
- ① 16 12 8 OAK TREE - TRUNK DIAMETER IN INCHES
- ② 16 12 8 OAK TREE WITH MULTIPLE TRUNKS
- TRUNK↑ TREE DRIP LINE POINTS TOWARDS TREE TRUNKS. TREE DRIP LINES ABOVE PROPERTY LOCATED AS SHOWN.
- +25.34 TOP OF CURB
- x—x— FENCE
- OE—OE— OVERHEAD WIRES
- PP POWER POLE
- + 12.34 SPOT ELEVATION
- SSCO @ 8.14 SANITARY SEWER CLEAN OUT
- ⊕ IRRIGATION VALVE BOX
- TC=8.97 EDGE OF AC PAVING
- INLET FL=12.34 STORM DRAIN CURB INLET

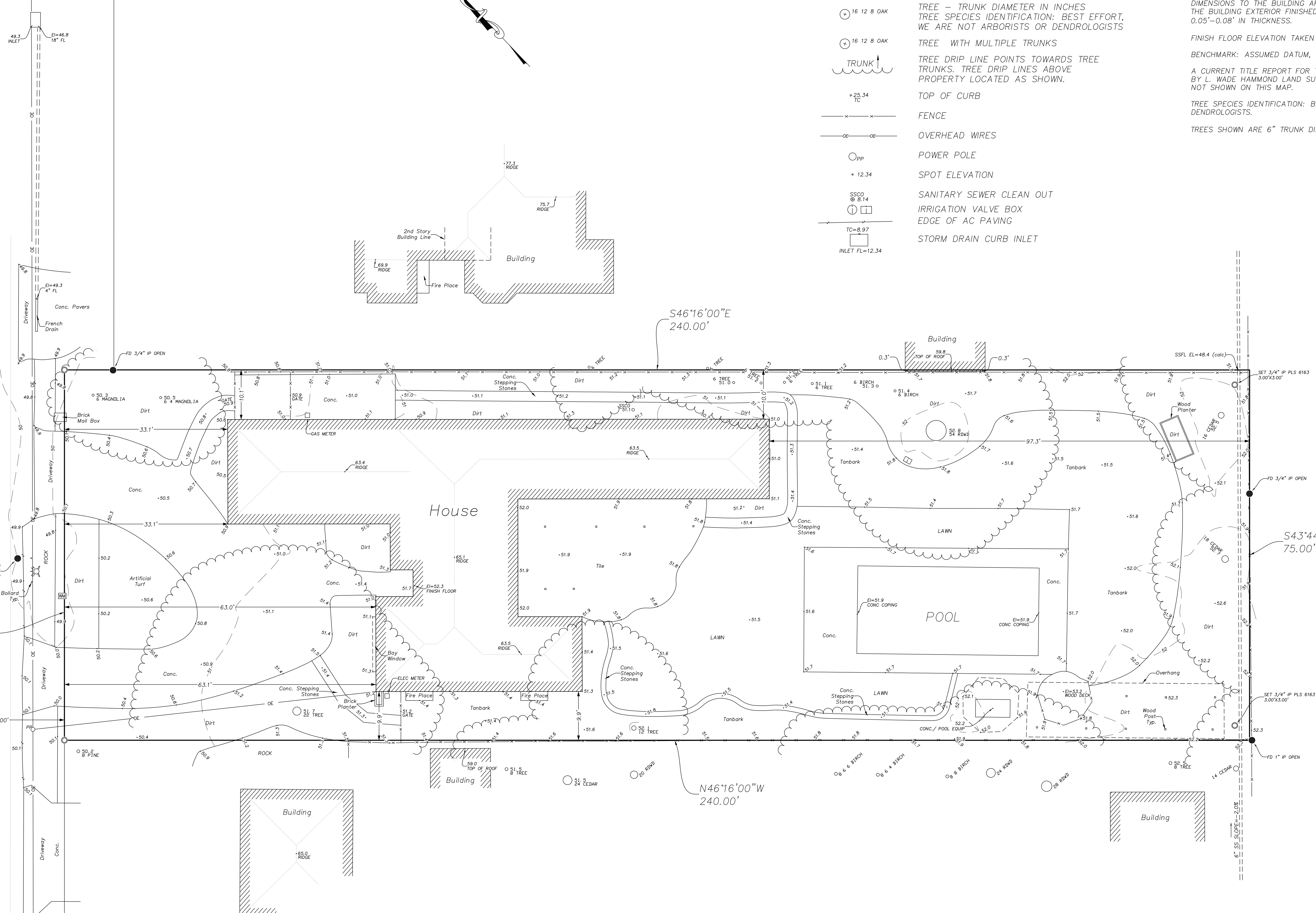
NOTES

- ALL DISTANCES AND DIMENSIONS ARE IN FEET AND DECIMALS.
- BOUNDARY CONTROL: SEE CONCURRENT RECORD OF SURVEY MAP
- UNDERGROUND UTILITY - LOCATION IS BASED ON SURFACE EVIDENCE.
- BUILDING LOCATION DIMENSIONS ARE MEASURED PERPENDICULAR TO THE PROPERTY LINES.
- DIMENSIONS TO THE BUILDING ARE TAKEN AT THE EXTERIOR FINISHED SURFACE. THE BUILDING EXTERIOR FINISHED SURFACE IS STUCCO AND VARIES APPROXIMATELY 0.05"-0.08" IN THICKNESS.
- FINISH FLOOR ELEVATION TAKEN AT DOOR THRESHOLD (EXTERIOR).
- BENCHMARK: ASSUMED DATUM, POINT AS SHOWN
- A CURRENT TITLE REPORT FOR THE SUBJECT PROPERTY HAS NOT BEEN EXAMINED BY L. WADE HAMMOND LAND SURVEYOR. EASEMENTS OF RECORD MAY EXIST THAT ARE NOT SHOWN ON THIS MAP.
- TREE SPECIES IDENTIFICATION: BEST EFFORT, WE ARE NOT ARBORISTS OR DENDROLOGISTS.
- TREES SHOWN ARE 6" TRUNK DIAMETER OR LARGER, MEASURED 5' ABOVE GRADE

CRESTVIEW DR.

LOYOLA DR.
(40' WIDE)

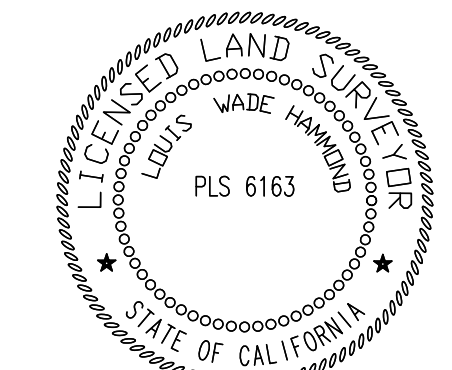
ESBERG ROAD



ABBREVIATIONS

- | | |
|-------|-------------------------|
| AC | ASPHALT |
| CONC. | CONCRETE |
| FL | FLOW LINE |
| SDMH | STORM DRAIN MANHOLE |
| SSMH | SANITARY SEWER MANHOLE |
| P.U.E | PUBLIC UTILITY EASEMENT |
| NRM | NO RECORD OF MONUMENT |

BOUNDARY AND TOPOGRAPHIC SURVEY
 778 LOYOLA DR.
 LOS ALTOS
 APN: 331-11-087
 DOC#23354096
 LOT AREA: 18,000 SQ. FT.



L. Wade Hammond

L. Wade Hammond
 Licensed Land Surveyor
 No. 6163
 36660 Newark Blvd. Suite C
 Newark, California 94560
 Tel: (510) 579-6112 Fax: (510) 991-8054
 wade@whlandsurveyor.com