

LEGEND

- (E) AB
- (E) AC
- (E) CONCRETE
- PROPOSED AC
- (E) FLOWLINE
- (E) RETAINING WALL
- PROPERTY LINE
- PROPOSED SETBACK
- PROPOSED LIMIT OF GRADING
- PROPOSED RETAINING WALL
- PROPOSED AC BERM
- PROPOSED SWALE
- PROPOSED SD
- PROPOSED PERIMETER SD
- PROPOSED SDCO
- PROPOSED CB

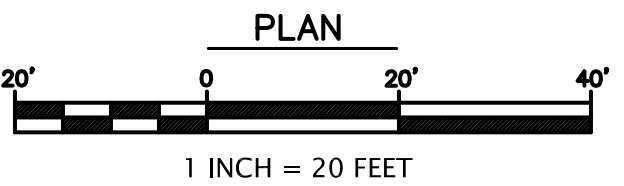
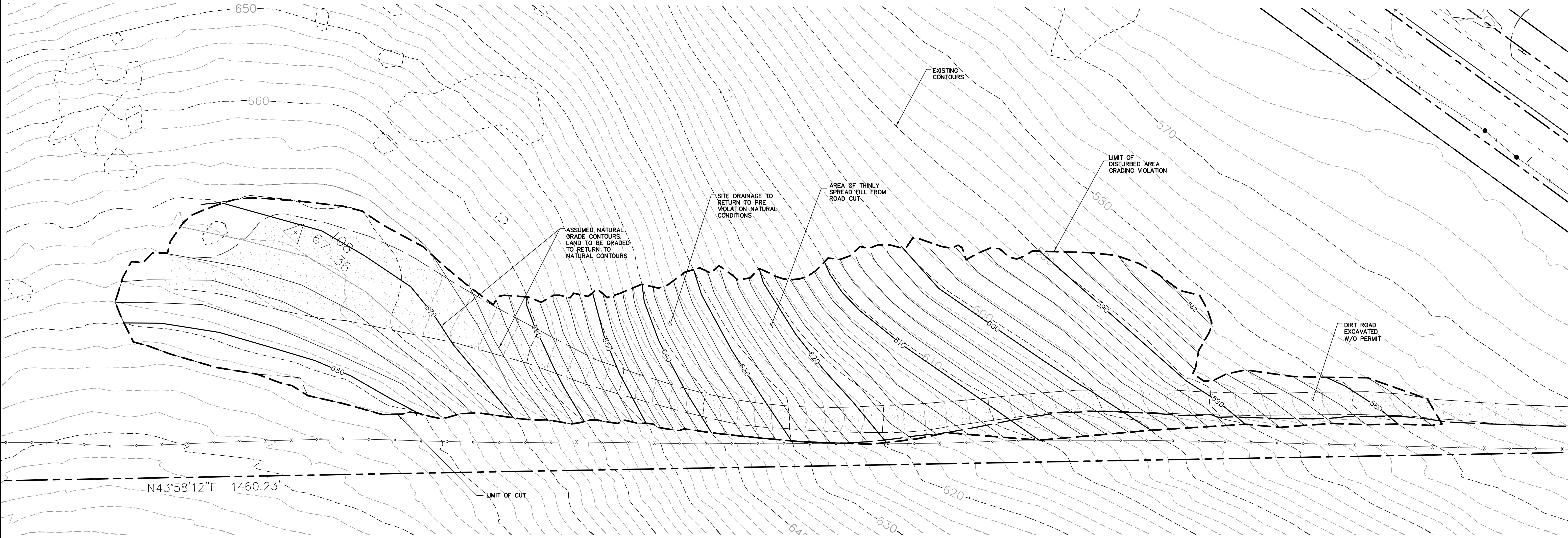
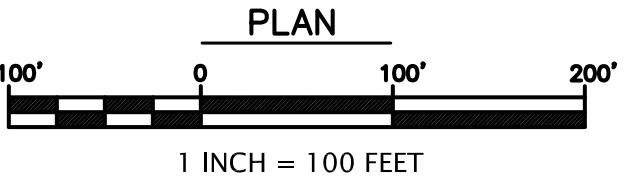
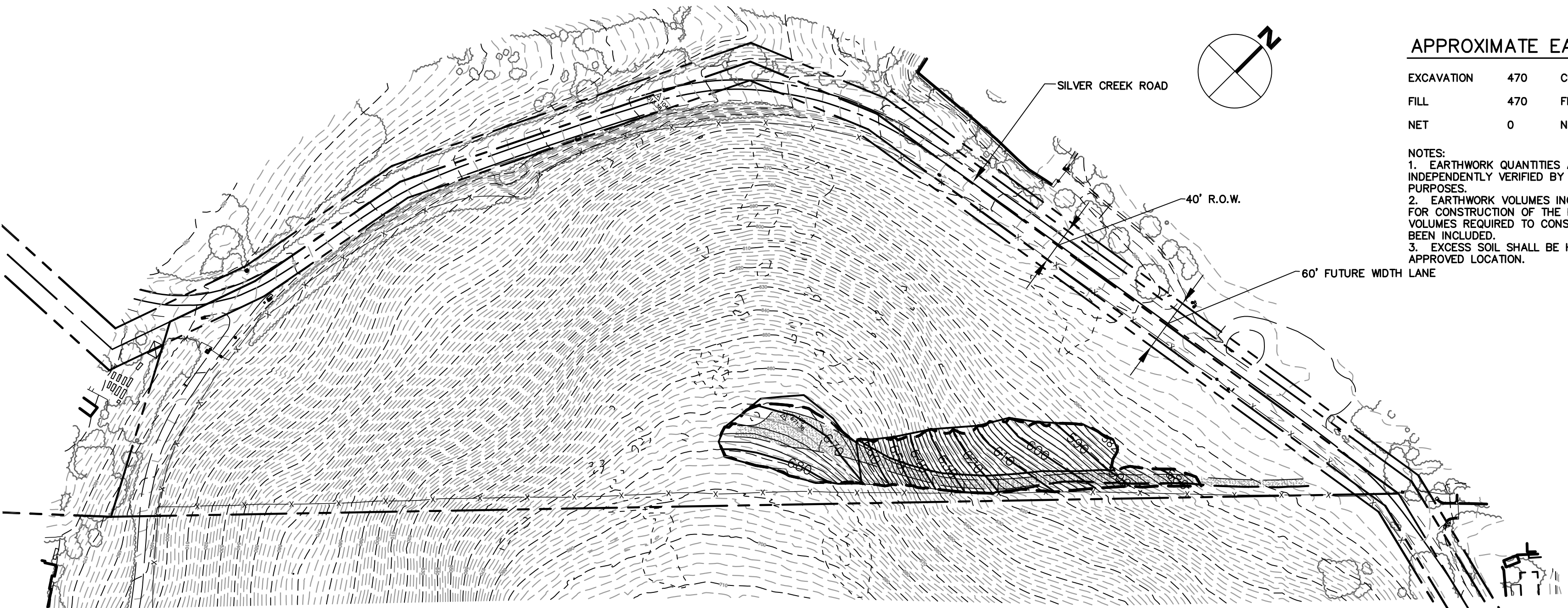
APPROXIMATE EARTHWORK QUANTITIES

EXCAVATION	470	CUT	CUBIC YARDS
FILL	470	FILL	CUBIC YARDS
NET	0	NET	CUBIC YARDS EXCAVATION

NOTES:
1. EARTHWORK QUANTITIES ARE APPROXIMATE AND SHALL BE INDEPENDENTLY VERIFIED BY THE CONTRACTOR FOR BIDDING PURPOSES.
2. EARTHWORK VOLUMES INCLUDE EXCAVATION TO ROUGH GRADE FOR CONSTRUCTION OF THE PROPOSED RESIDENCE. EARTHWORK VOLUMES REQUIRED TO CONSTRUCT THE FOUNDATIONS HAVE NOT BEEN INCLUDED.
3. EXCESS SOIL SHALL BE HAULED OR PLACED IN A COUNTY APPROVED LOCATION.

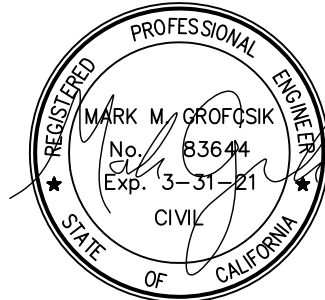
ABBREVIATIONS

BW	BOTTOM OF WALL
CB	CATCH BASIN
CONST	CONSTRUCT
DIA, Ø	DIAMETER
DS	DOWNSPOUT
DTL	DETAIL
DWY	DRIVEWAY
(E)	EXISTING
EL	ELEVATION
EOP	EDGE OF PAVEMENT
FF	FINISH FLOOR
FG	FINISH GRADE
FS	FIRE SERVICE
HP	HIGH POINT
INV	INVERT
LF	LINEAR FEET
LP	LOW POINT
MAX	MAXIMUM
N.T.S.	NOT TO SCALE
RW	RETAINING WALL
RIM	RIM ELEVATION
S	SLOPE
SCCO	SANTA CLARA COUNTY
SSCO	SANITARY SEWER CLEANOUT
SDCO	STORM DRAIN CLEANOUT
TYP	TYPICAL
TW	TOP OF WALL
WS	WATER SERVICE



TOPOGRAPHIC SURVEY

THE TOPOGRAPHIC SURVEY AND BOUNDARY INFORMATION PROVIDED HEREON WAS COMPLETED BY CARNES AND ASSOCIATES. RI ENGINEERING INC. MAKES NO GUARANTEE AS TO THE ACCURACY OF BOTH. THE CONTRACTOR SHALL VERIFY THE BOUNDARY LOCATION AND TOPOGRAPHIC INFORMATION PRIOR TO COMMENCING WORK.



1/6/2020



RI Engineering, Inc.

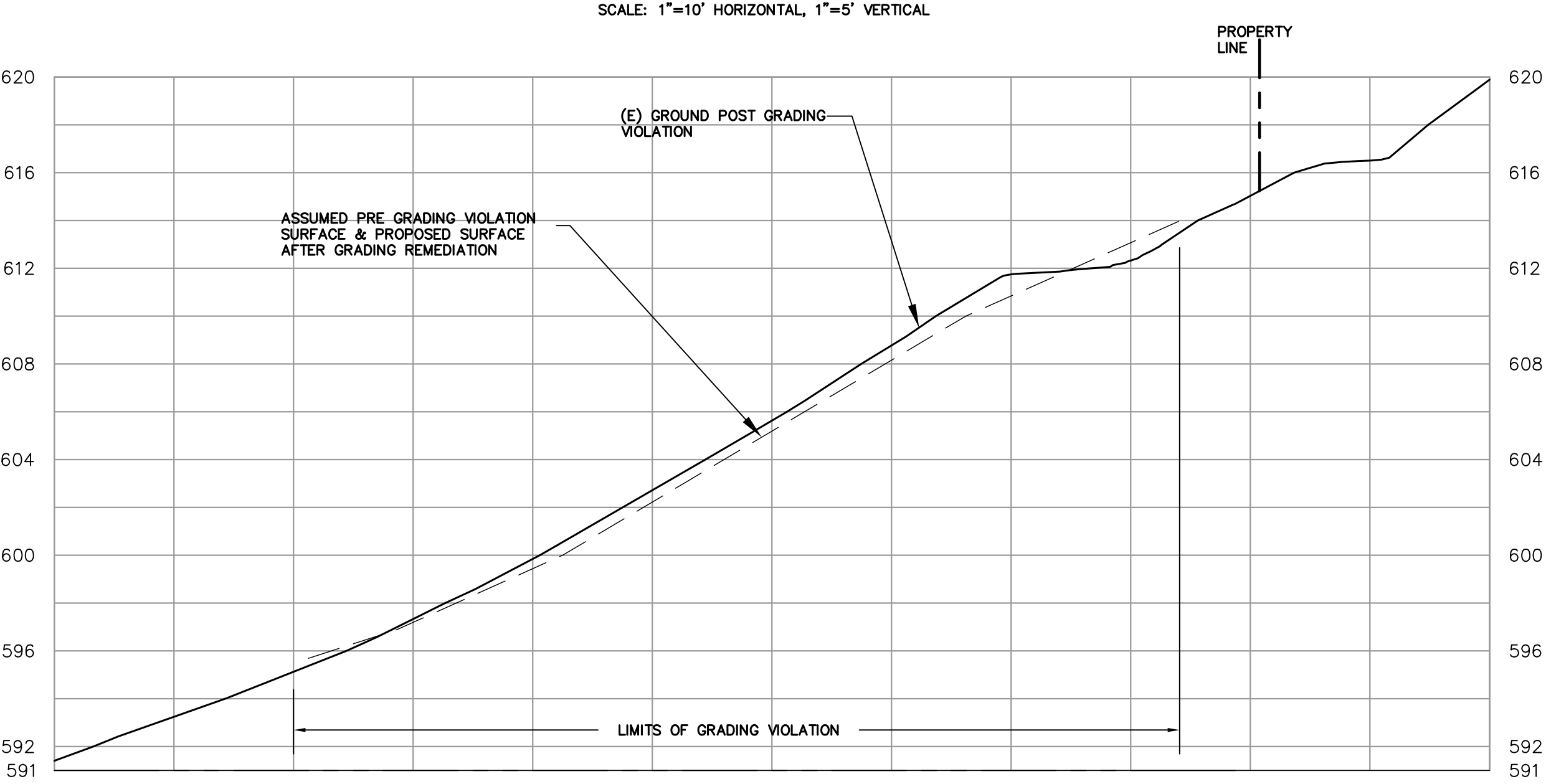
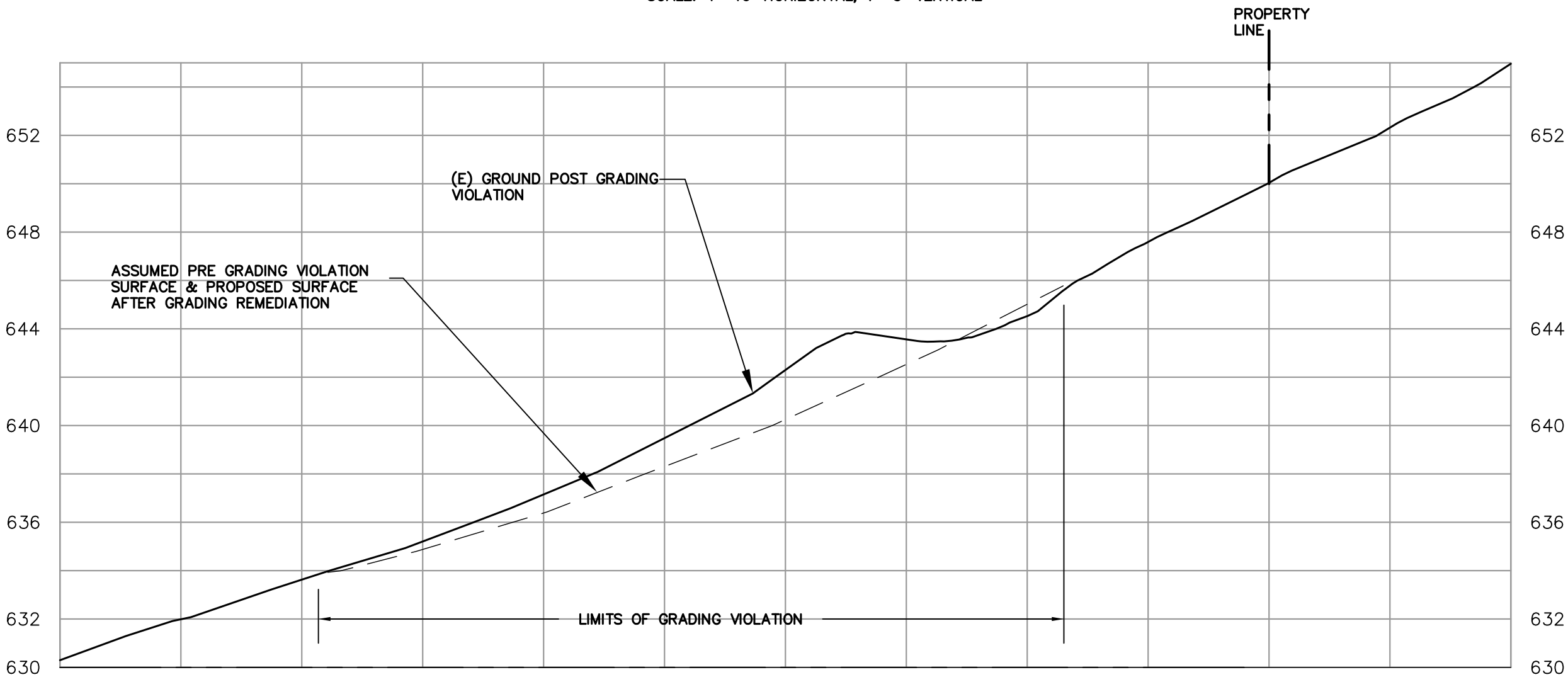
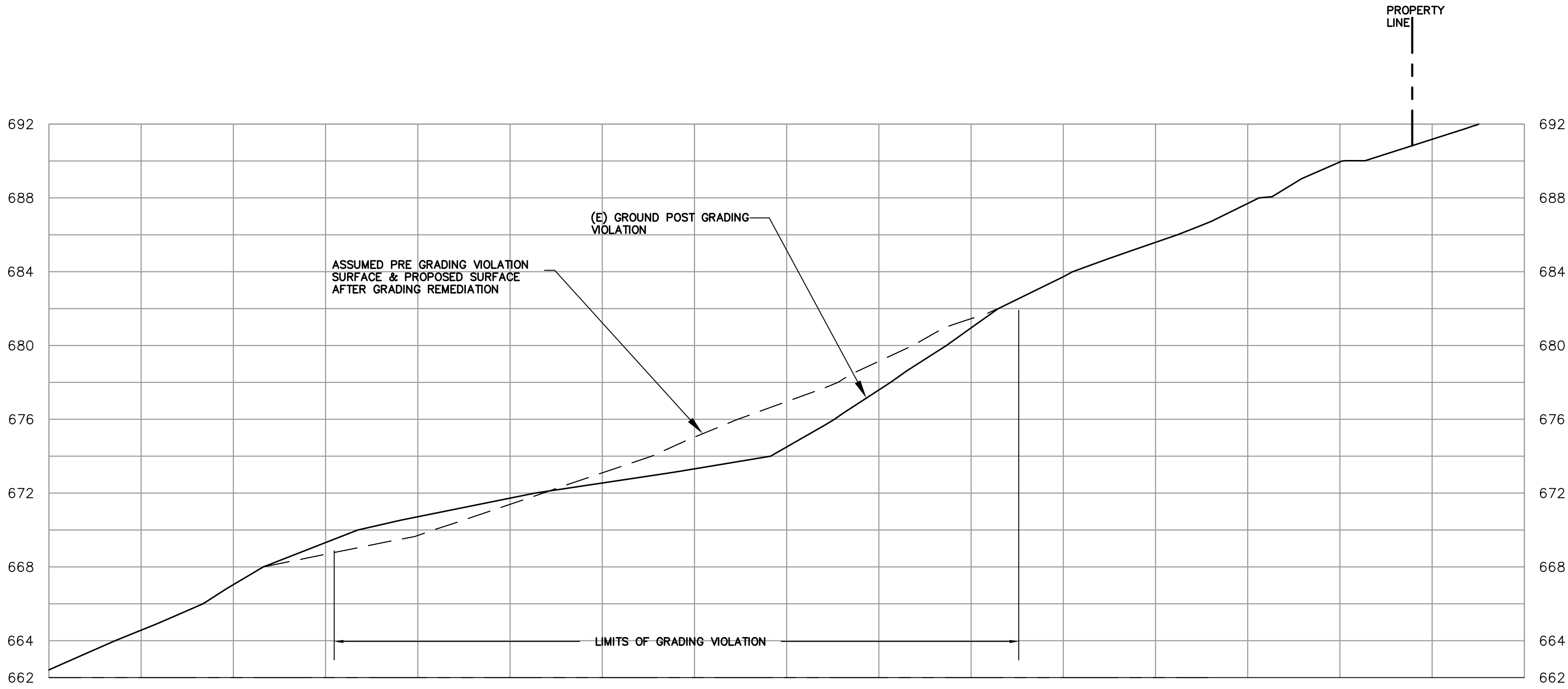
303 Potrero St., Suite 42-202, Santa Cruz, CA 95060
831-425-3901 www.riengineering.com

GRADING APPROVAL
FOR
THE GRATTANS
RANCHO YERBA BUENA
SILVER CREEK ROAD, SANTA CLARA COUNTY
APN 660-35-013

GRADING ABATEMENT PLAN

project no.
18-059-1
date
JANUARY 2020
scale
AS SHOWN
dwg name
CIVIL2.dwg

C-1



R.I. Engineering, Inc.

303 Potrero St., Suite 42-202, Santa Cruz, CA 95060
831-425-3901 www.riengineering.com

GRADING APPROVAL
FOR
THE GRATTANS
RANCHO YERBA BUENA
SILVER CREEK ROAD, SANTA CLARA COUNTY
APN 660-35-013

CROSS SECTIONS

project no.
18-059-1

date
JANUARY 2020

scale
AS SHOWN

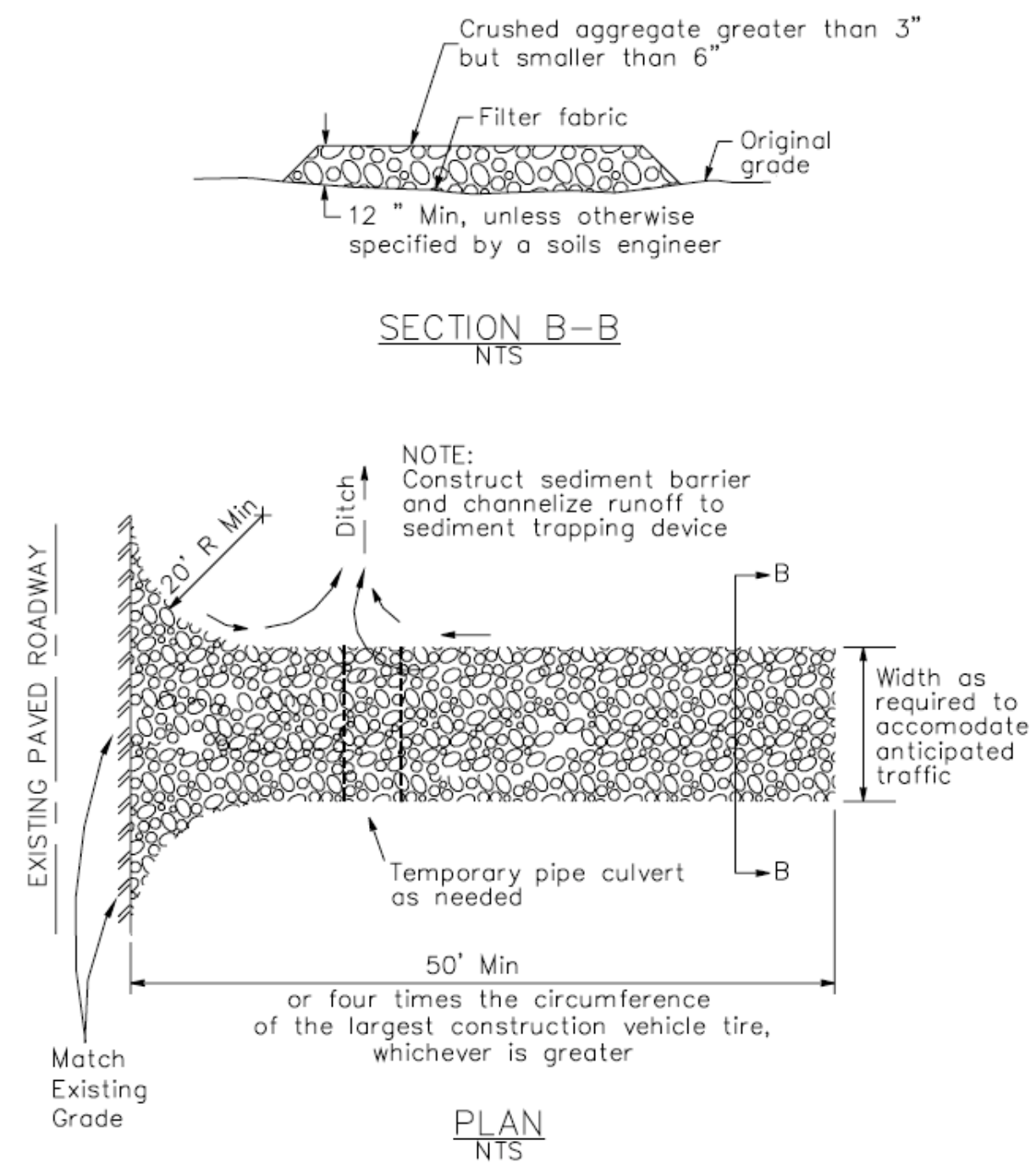
dwg name
CIVIL2.dwg

C-2

3

Stabilized Construction Entrance/Exit

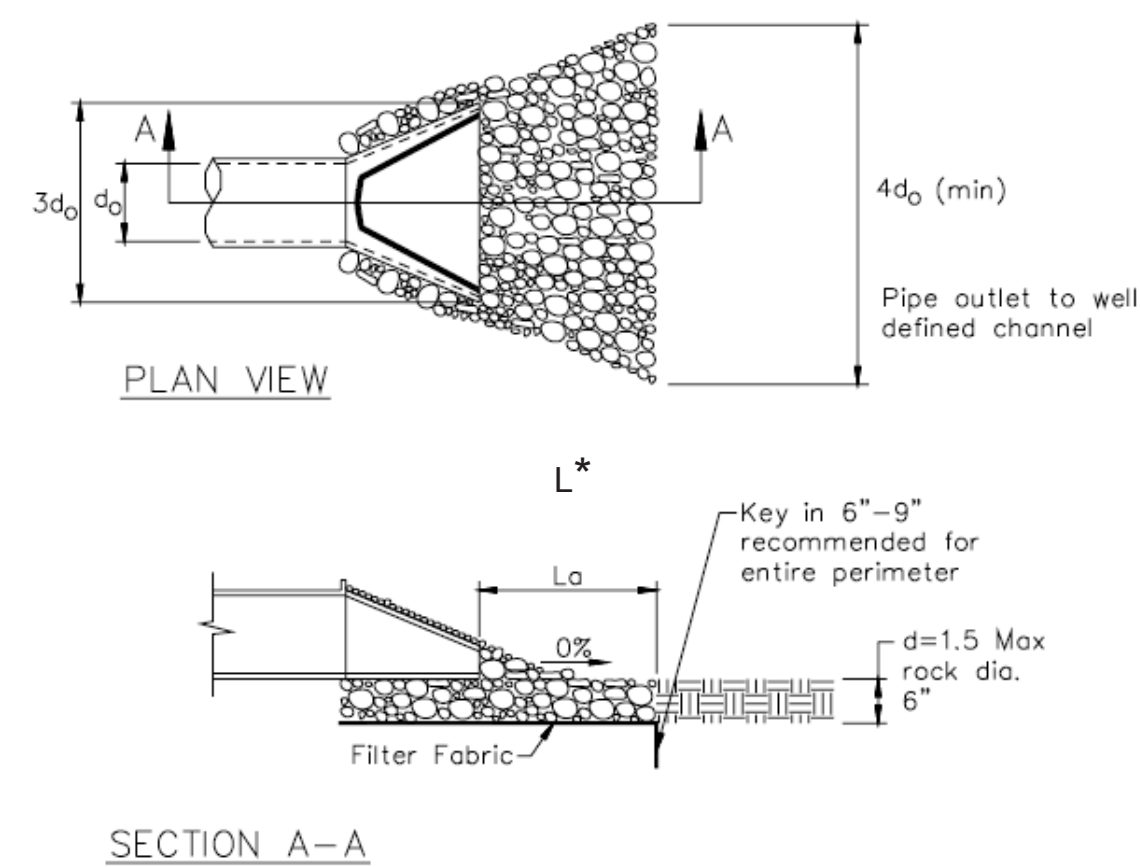
CASQA Detail TC-1



4

Velocity Dissipation Devices

CASQA Detail EC-10



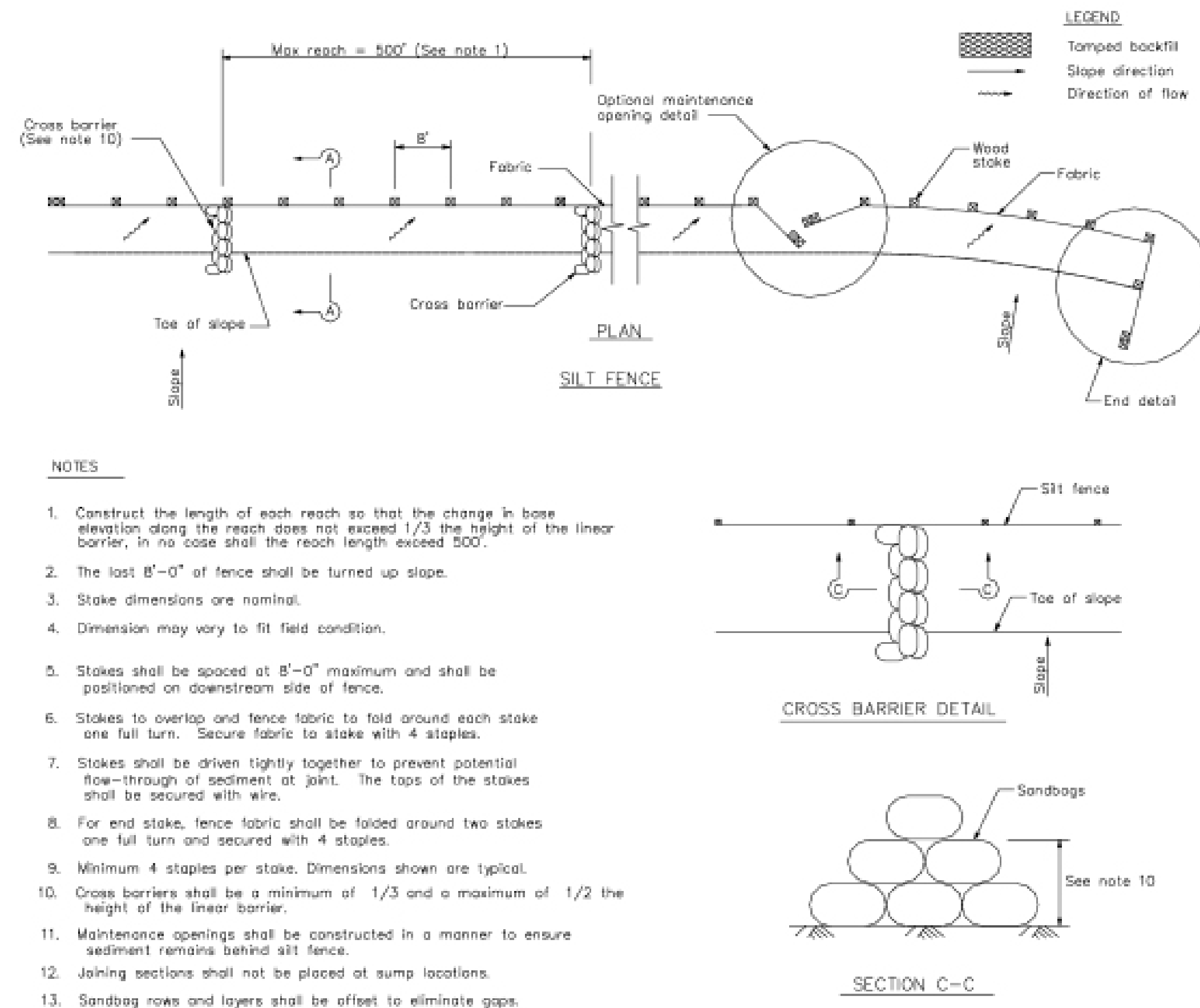
* Length per ABAG Design Standards

Source for Graphics: California Stormwater BMP Handbook, California Stormwater Quality Association, January 2003.
Available from www.cabmphandbooks.com.

1

Silt Fence

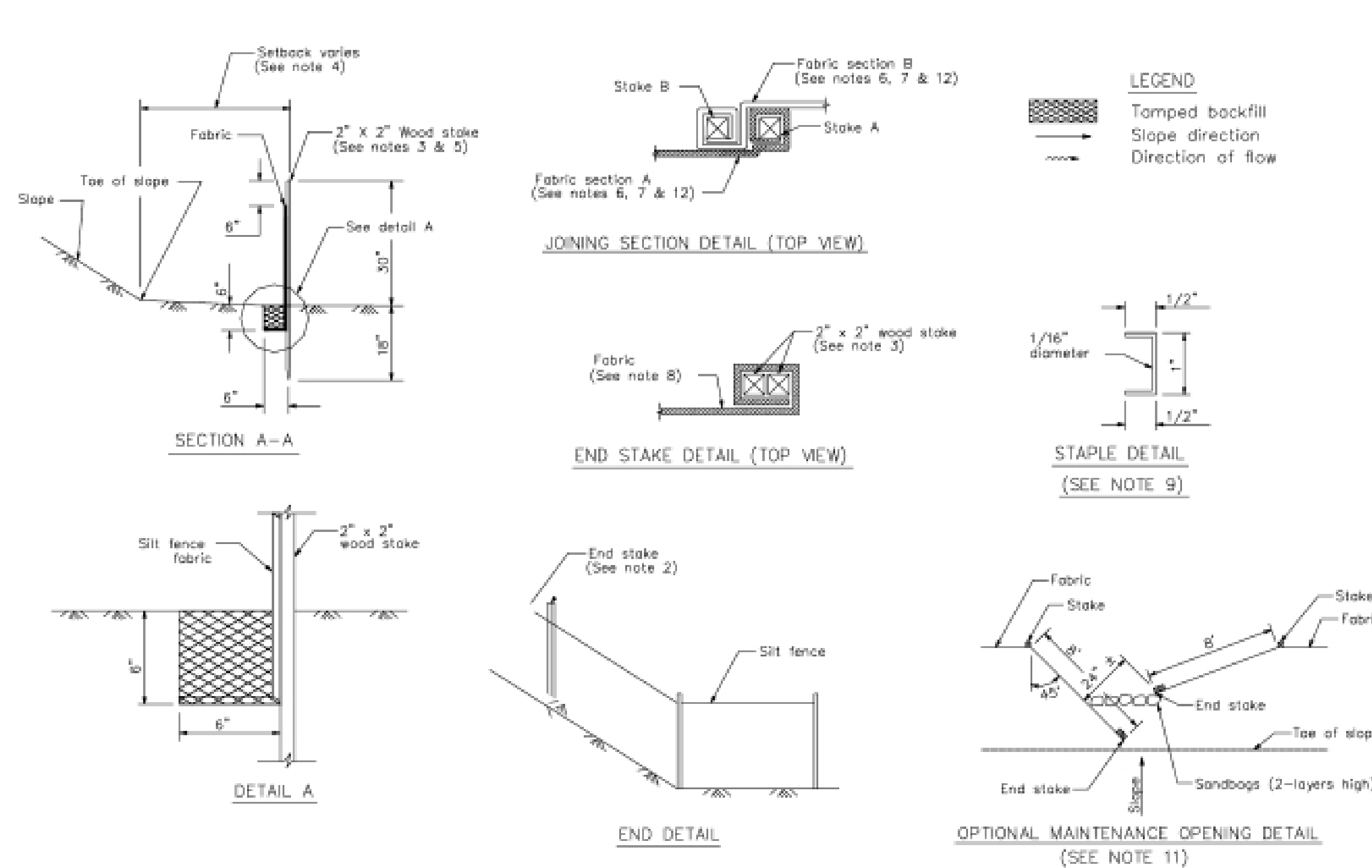
CASQA Detail SE-1



2

Silt Fence

CASQA Detail SE-1

**STANDARD BEST MANAGEMENT PRACTICE NOTES**

- Solid and Demolition Waste Management:** Provide designated waste collection areas and containers on site away from streets, gutters, storm drains, and waterways, and arrange for regular disposal. Waste containers must be watertight and covered at all times except when waste is deposited. Refer to Erosion & Sediment Control Field Manual, 4th Edition (page C3) or latest.
- Hazardous Waste Management:** Provide proper handling and disposal of hazardous wastes by a licensed hazardous waste material hauler. Hazardous wastes shall be stored and properly labeled in sealed containers constructed of suitable materials. Refer to Erosion & Sediment Control Field Manual, 4th Edition (pages C-5 to C-6) or latest.
- Spill Prevention and Control:** Provide proper storage areas for liquid and solid materials, including chemicals and hazardous substances, away from streets, gutters, storm drains, and waterways. Spill control materials must be kept on site where readily accessible. Spills must be cleaned up immediately and contaminated soil disposed properly. Refer to Erosion & Sediment Control Field Manual, 4th Edition (pages C-7 to C-8, C-13 to C-14) or latest.
- Vehicle and Construction Equipment Service and Storage:** An area shall be designated for the maintenance, where on-site maintenance is required, and storage of equipment that is protected from stormwater run-on and runoff. Measures shall be provided to capture any waste oils, lubricants, or other potential pollutants and these wastes shall be properly disposed of off site. Fueling and major maintenance/repair, and washing shall be conducted off-site whenever feasible. Refer to Erosion & Sediment Control Field Manual, 4th Edition (page C9) or latest.
- Material Delivery, Handling and Storage:** In general, materials should not be stockpiled on site. Where temporary stockpiles are necessary and approved by the County, they shall be covered with secured plastic sheeting or tarp and located in designated areas near construction entrances and away from drainage paths and waterways. Barriers shall be provided around storage areas where materials are potentially in contact with runoff. Refer to Erosion & Sediment Control Field Manual, 4th Edition (pages C-11 to C-12) or latest.
- Handling and Disposal of Concrete and Cement:** When concrete trucks and equipment are washed on-site, concrete wastewater shall be contained in designated containers or in a temporary lined and watertight pit where wasted concrete can harden for later removal. If possible have concrete contractor remove concrete wash water from site. In no case shall fresh concrete be washed into the road right-of-way. Refer to Erosion & Sediment Control Field Manual, 4th Edition (pages C-15 to C-16) or latest.
- Pavement Construction Management:** Prevent or reduce the discharge of pollutants from paving operations, using measures to prevent run-on and runoff pollution and properly disposing of wastes. Avoid paving in the wet season and reschedule paving when rain is in the forecast. Residue from saw-cutting shall be vacuumed for proper disposal. Refer to Erosion & Sediment Control Field Manual, 4th Edition (pages C-17 to C-18) or latest.
- Contaminated Soil and Water Management:** Inspections to identify contaminated soils should occur prior to construction and at regular intervals during construction. Remediating contaminated soil should occur promptly after identification and be specific to the contaminant identified, which may include hazardous waste removal. Refer to Erosion & Sediment Control Field Manual, 4th Edition (pages C-19 to C-20) or latest.
- Sanitary/Septic Water Management:** Temporary sanitary facilities should be located away from drainage paths, waterways, and traffic areas. Only licensed sanitary and septic waste haulers should be used. Secondary containment should be provided for all sanitary facilities. Refer to Erosion & Sediment Control Field Manual, 4th Edition (page C-21) or latest.
- Inspection & Maintenance:** Areas of material and equipment storage sites and temporary sanitary facilities must be inspected weekly. Problem areas shall be identified and appropriate additional and/or alternative control measures implemented immediately, within 24 hours of the problem being identified.

STANDARD EROSION CONTROL NOTES

- Sediment Control Management:**

Tracking Prevention & Clean Up: Activities shall be organized and measures taken as needed to prevent or minimize tracking of soil onto the public street system. A gravel or proprietary device construction entrance/exit is required for all sites. Clean up of tracked material shall be provided by means of a street sweeper prior to an approaching rain event, or at least once at the end of each workday that material is tracked, or, more frequently as determined by the County Inspector. Refer to Erosion & Sediment Control Field Manual, 4th Edition (pages B-31 to B-33) or latest.

Storm Drain Inlet and Catch Basin Inlet Protection: All inlets within the vicinity of the project and within the project limits shall be protected with gravel bags placed around inlets or other inlet protection. At locations where exposed soils are present, staked fiber roles or staked silt fences can be used. Inlet filters are not allowed due to clogging and subsequent flooding. Refer to Erosion & Sediment Control Field Manual, 4th Edition (pages B-49 to B-51) or latest.

Storm Water Runoff: No storm water runoff shall be allowed to drain in to the existing and/or proposed underground storm drain system or other above ground watercourses until appropriate erosion control measures are fully installed.

Dust Control: The contractor shall provide dust control in graded areas as required by providing wet suppression or chemical stabilization of exposed soils, providing for rapid clean up of sediments deposited on paved roads, furnishing construction road entrances and vehicle wash down areas, and limiting the amount of areas disturbed by clearing and earth moving operations by scheduling these activities in phases.

Stockpiling: Excavated soils shall not be placed in streets or on paved areas. Borrow and temporary stockpiles shall be protected with appropriate erosion control measures (tarps, straw bales, silt fences, etc.) to ensure silt does not leave the site or enter the storm drain system or neighboring watercourse.
- Erosion Control:** During the rainy season, all disturbed areas must include an effective combination of erosion and sediment control. It is required that temporary erosion control measures are applied to all disturbed soil areas prior to a rain event. During the non-rainy season, erosion control measures must be applied sufficient to control wind erosion at the site.
- Inspection & Maintenance:** Disturbed areas of the Project's site, locations where vehicles enter or exit the site, and all erosion and sediment controls that are identified as part of the Erosion Control Plans must be inspected by the Contractor before, during, and after storm events, and at least weekly during seasonal wet periods. Problem areas shall be identified and appropriate additional and/or alternative control measures implemented immediately, within 24 hours of the problem being identified.
- Project Completion:** Prior to project completion and signoff by the County Inspector, all disturbed areas shall be reseeded, planted, or landscaped to minimize the potential for erosion on the subject site.
- It shall be the Owner's/Contractor's responsibility to maintain control of the entire construction operation and to keep the entire site in compliance with the erosion control plan.
- Erosion and sediment control best management practices shall be operable year round or until vegetation is fully established on landscaped surfaces.

Project Information

APPLICANT: THE GRATTANS
FOR
ROAD: SILVER CREEK ROAD
COUNTY FILE NO. 11419-55-18GV

GRADING ABATEMENT
FOR
THE GRATTANS
SILVER CREEK ROAD
APN: 660-35-013
PROJECT #18-059-1

**BMP-1**

Best Management Practices and Erosion Control Details Sheet 1

County of Santa Clara

APPLICANT: GRATTANS

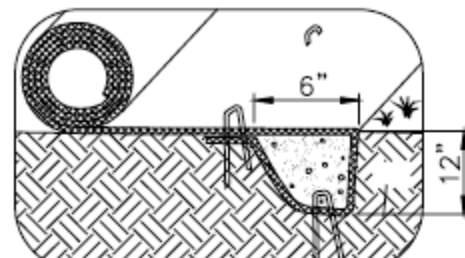
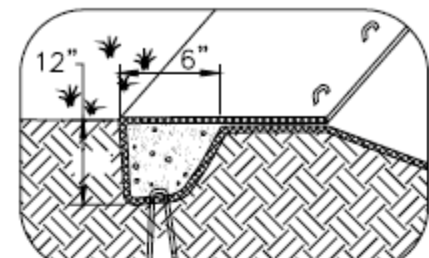
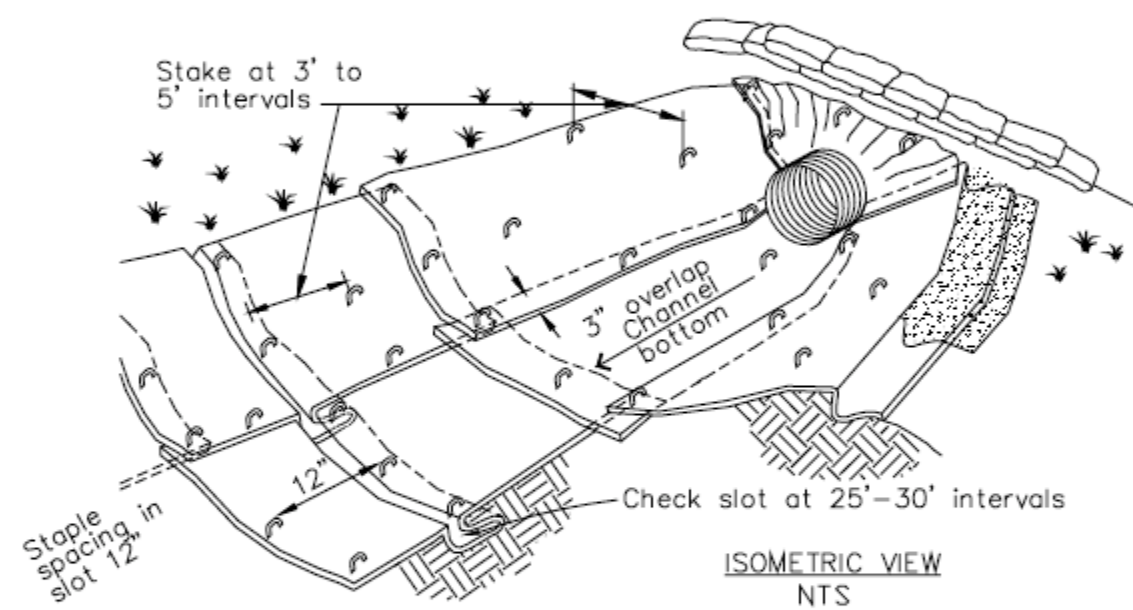
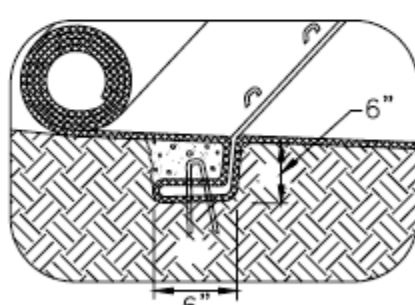
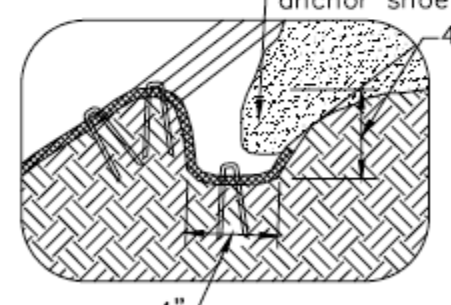
ROAD: SILVER CREEK ROAD

COUNTY FILE NO: 11419-55-18GV

7

Geotextiles and Mats

CASQA Detail EC-7

INITIAL CHANNEL ANCHOR TRENCH
NTSTERMINAL SLOPE AND CHANNEL
ANCHOR TRENCH
NTSISOMETRIC VIEW
NTSINTERMITTENT CHECK SLOT
NTSLONGITUDINAL ANCHOR TRENCH
NTS

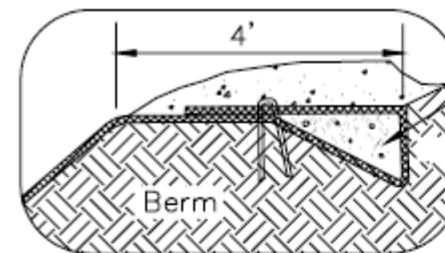
- NOTES:
1. Check slots to be constructed per manufacturers specifications.
 2. Staking or stapling layout per manufacturers specifications.
 3. Install per manufacturer's recommendations

TYPICAL INSTALLATION DETAIL

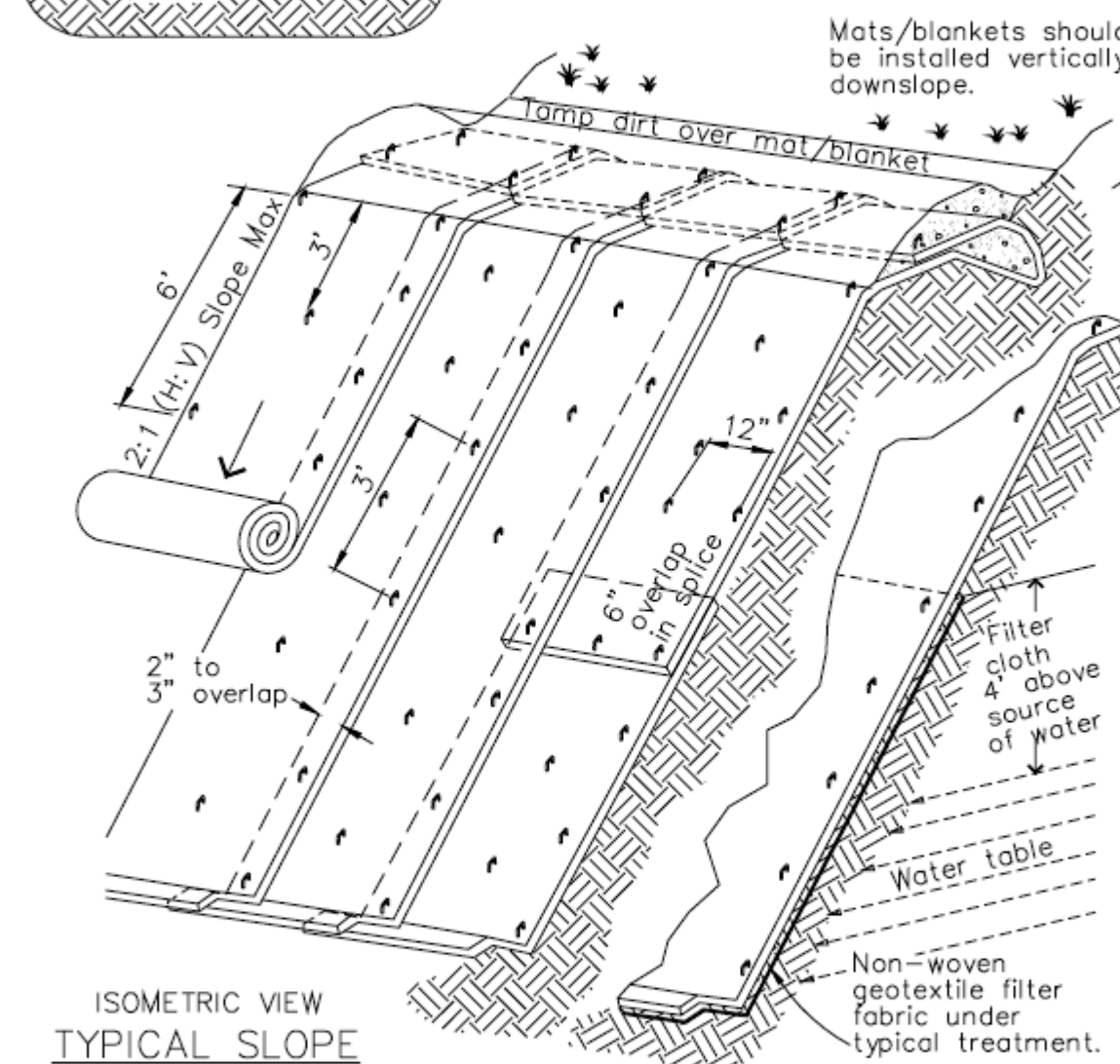
5

Geotextiles and Mats

CASQA Detail EC-7



6" X 6" anchor trench

ISOMETRIC VIEW
TYPICAL SLOPE
SOIL STABILIZATION
NTSWET SLOPE LINING
NTS

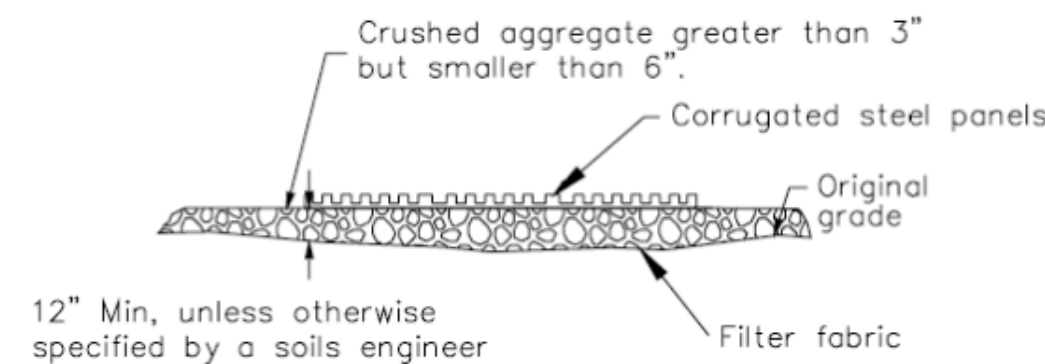
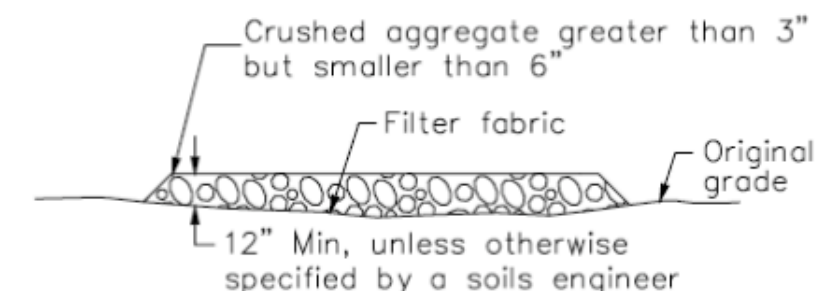
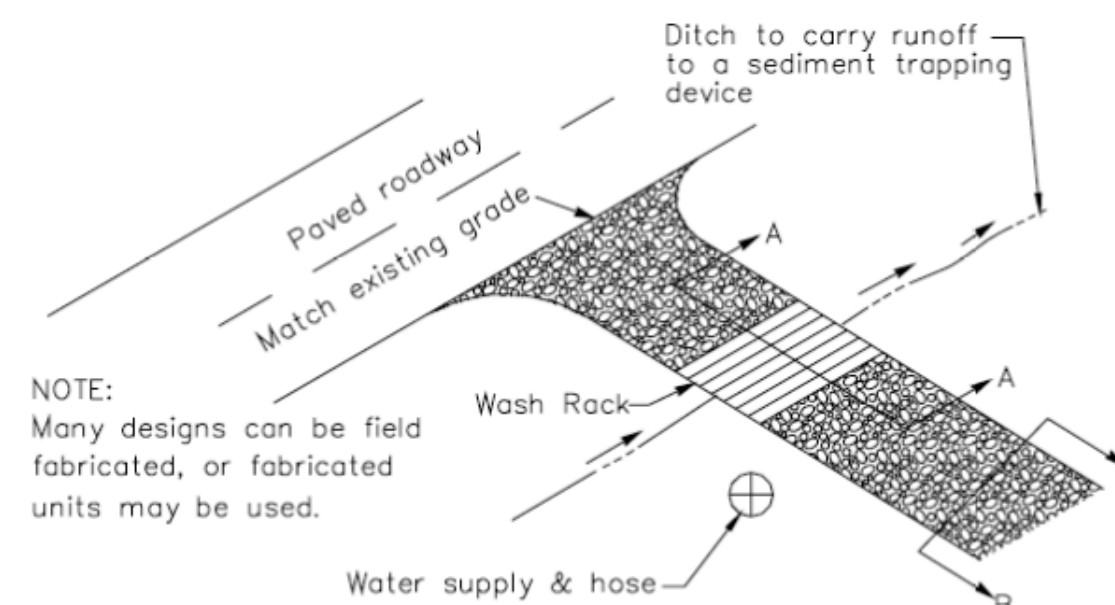
- NOTES:
1. Slope surface shall be free of rocks, clods, sticks and grass. Mats/blankets shall have good soil contact.
 2. Lay blankets loosely and stake or staple to maintain direct contact with the soil. Do not stretch.
 3. Install per manufacturer's recommendations

TYPICAL INSTALLATION DETAIL

3

Entrance/Outlet Tire Wash

CASQA Detail TC-3

SECTION A-A
NOT TO SCALESECTION B-B
NTS

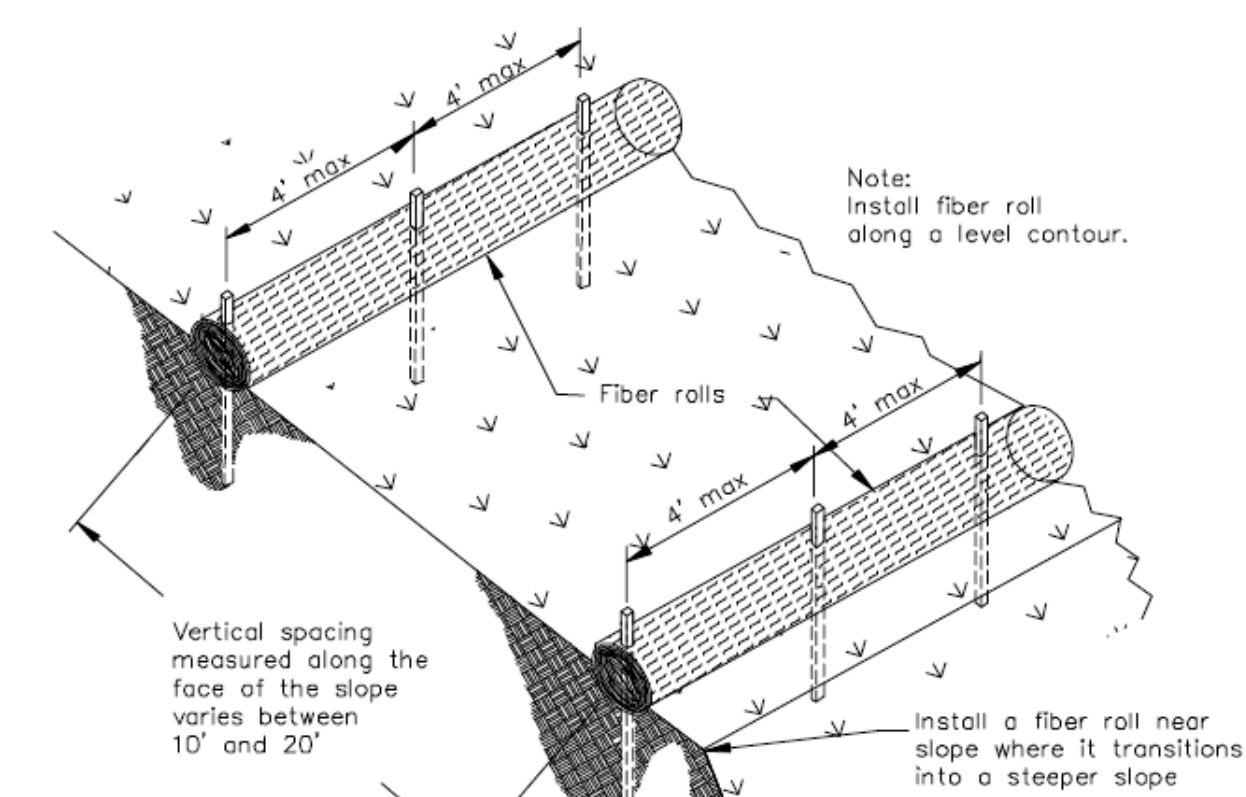
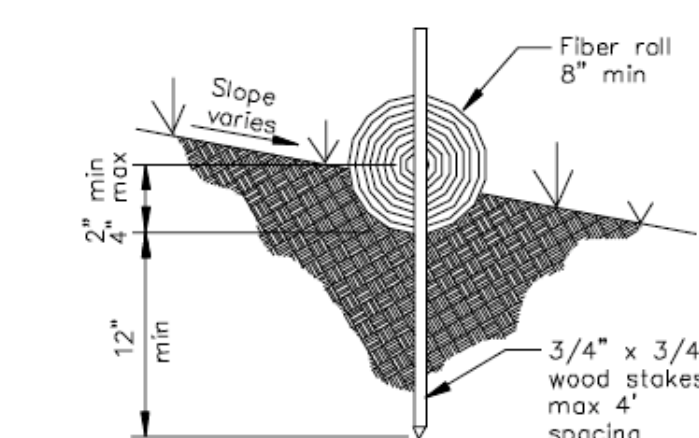
NOTE:
Many designs can be field fabricated, or fabricated units may be used.

TYPICAL TIRE WASH
NOT TO SCALE

1

Fiber Rolls

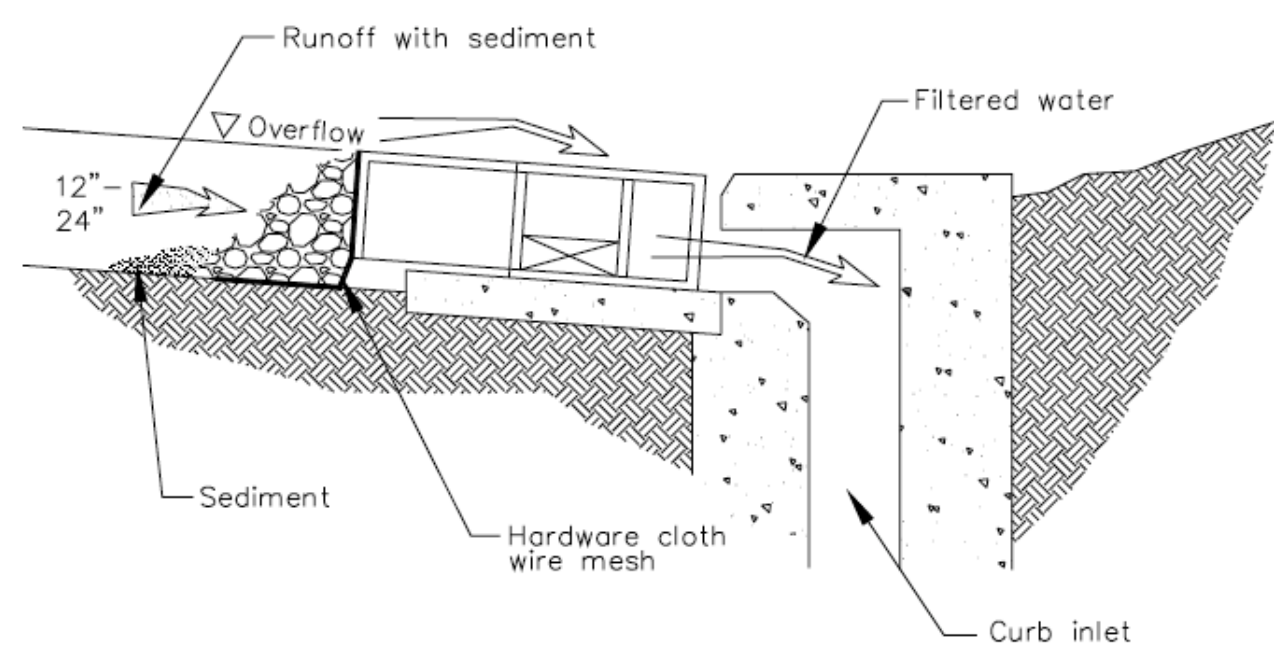
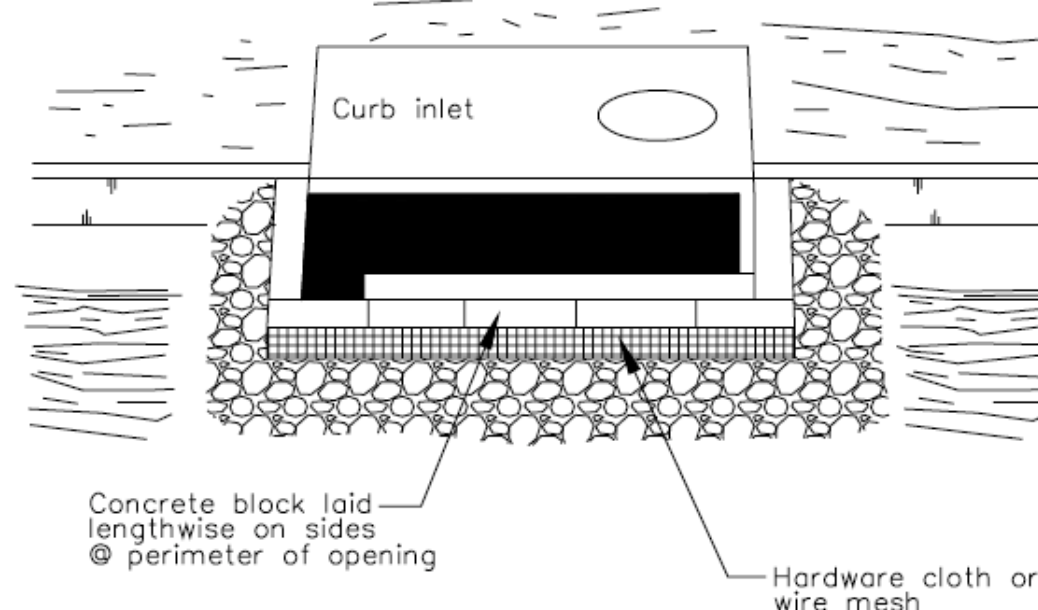
CASQA Detail SE-5

TYPICAL FIBER ROLL INSTALLATION
N.T.S.ENTRENCHMENT DETAIL
N.T.S.

8

Storm Drain Inlet Protection

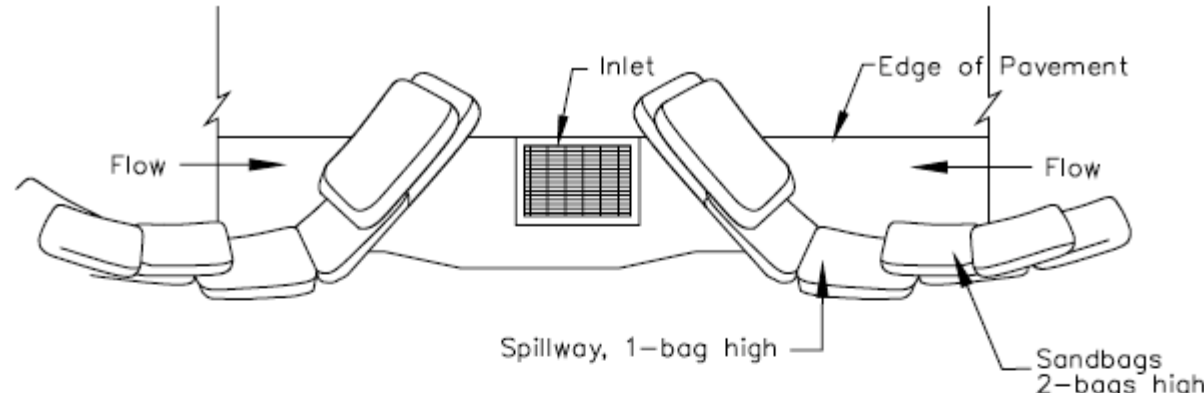
CASQA Detail SE-10

DI PROTECTION -- TYPE 4
NOT TO SCALE

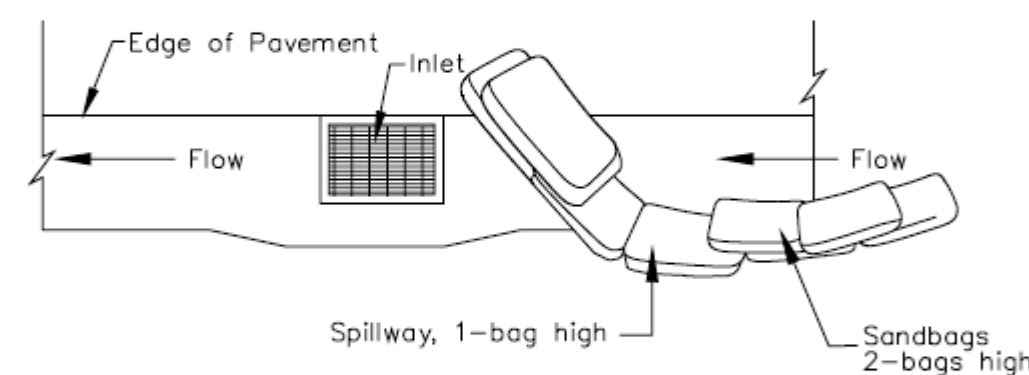
6

Storm Drain Inlet Protection

CASQA Detail SE-10



TYPICAL PROTECTION FOR INLET ON SUMP



TYPICAL PROTECTION FOR INLET ON GRADE

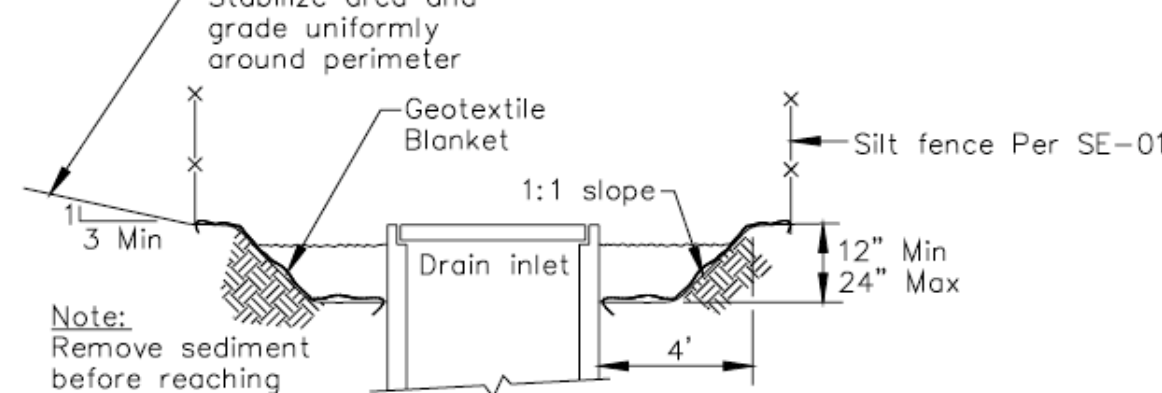
- NOTES:
1. Intended for short-term use.
 2. Use to inhibit non-storm water flow.
 3. Allow for proper maintenance and cleanup.
 4. Bags must be removed after adjacent operation is completed
 5. Not applicable in areas with high silts and clays without filter fabric.

DI PROTECTION TYPE 3
NOT TO SCALE

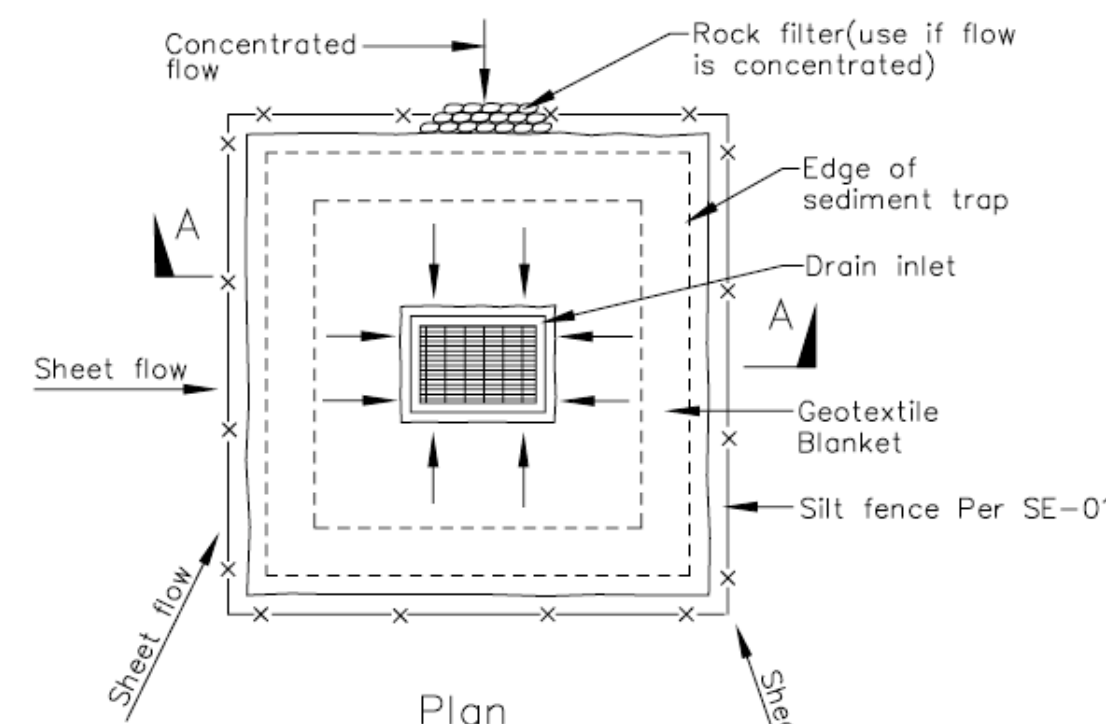
4

Storm Drain Inlet Protection

CASQA Detail SE-10



Section A-A

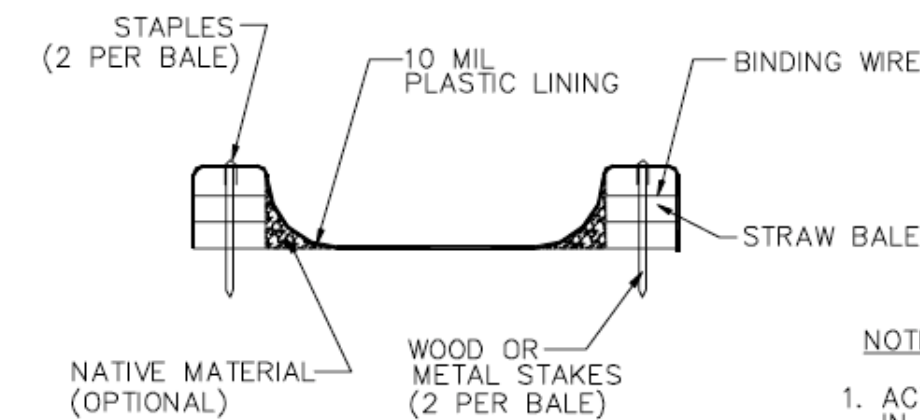
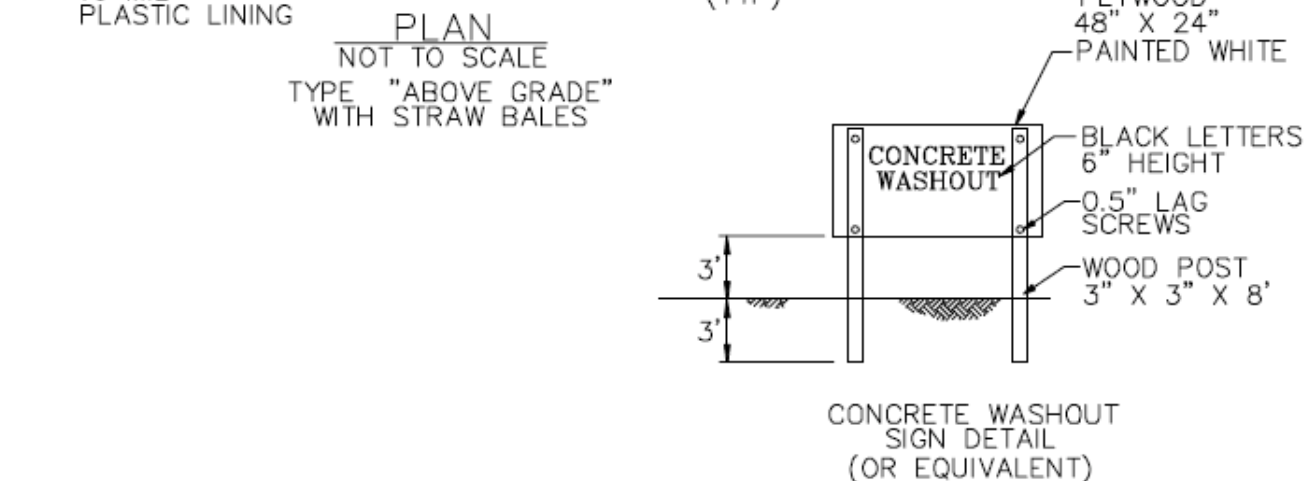
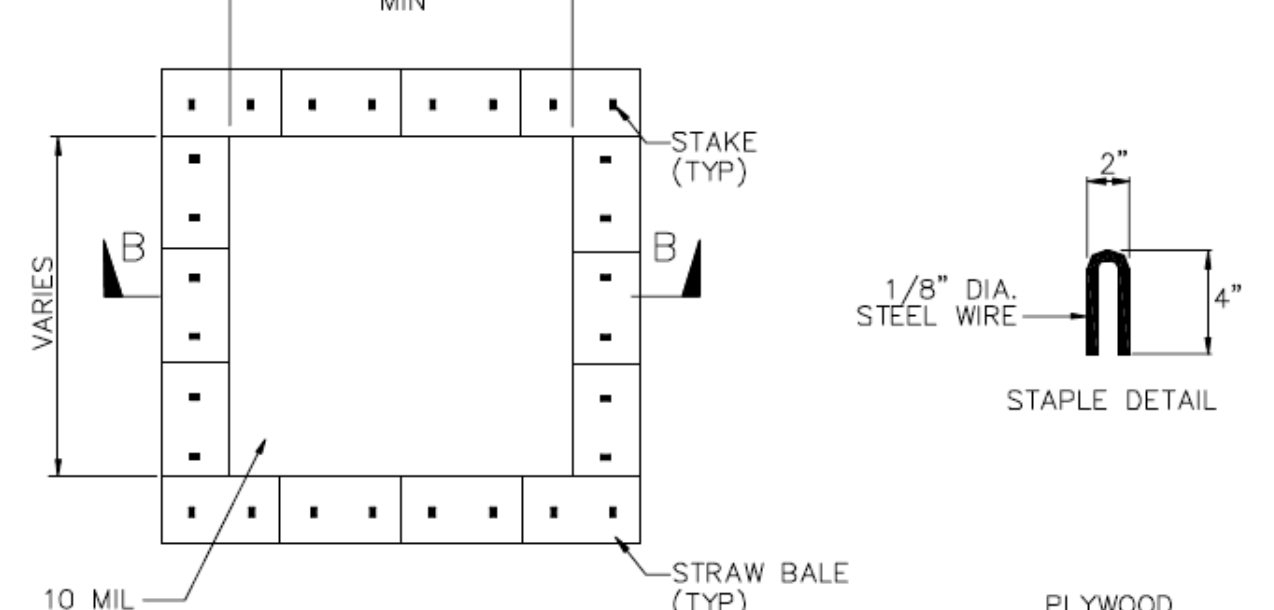
DI PROTECTION TYPE 2
NOT TO SCALE

- Notes
1. For use in cleared and grubbed and in graded areas.
 2. Shape basin so that longest inflow area faces longest length of trap.
 3. For concentrated flows, shape basin in 2:1 ratio with length oriented towards direction of flow.

2

Concrete Waste Management

CASQA Detail WM-8

SECTION B-B
NOT TO SCALE

- NOTES
1. ACTUAL LAYOUT DETERMINED IN FIELD.
 2. THE CONCRETE WASHOUT SIGN SHALL BE INSTALLED WITHIN 30 FT. OF THE TEMPORARY CONCRETE WASHOUT FACILITY.

Source for Graphics: California Stormwater BMP Handbook, California Stormwater Quality Association, January 2003.
Available from www.cabmphandbooks.com.

Best Management Practices and Erosion Control Details Sheet 2

County of Santa Clara

APPLICANT: GRATTANS

ROAD: SILVER CREEK ROAD

COUNTY FILE NO: 11419-55-18GV



BMP-2

Project Information

APPLICANT: THE GRATTANS
ROAD: SILVER CREEK ROAD
COUNTY FILE NO. 11419-55-18GV

GRADING ABATEMENT
FOR
THE GRATTANS
SILVER CREEK ROAD
APN: 660-35-013
PROJECT #18-059-1