

REVISIONS

Number	Date

ROBERT W. STEUER - CIVIL ENGINEER
R.C.E. 37251
1133 FAIRVIEW AVENUE
SAN JOSE, CALIFORNIA 95125
(408)-981-5844

REGISTERED PROFESSIONAL ENGINEER
ROBERT W. STEUER
NO. C 37251
Exp. 6-30-22
R W Steuer
CIVIL
STATE OF CALIFORNIA

PRELIMINARY GRADING AND DRAINAGE PLAN
LANDS OF CHANDRASEKARAN
APN 583-12-010
ALMADEN ROAD, SAN JOSE
SANTA CLARA COUNTY, CALIFORNIA

GRADING PLAN

DATE: 4-8-20
SCALE: 1" = 30'
DRAWN: RS
JOB: 6-20
APN: 583-12-010
CO. FILE:
SHEET
C2.0
OF 9 SHEETS

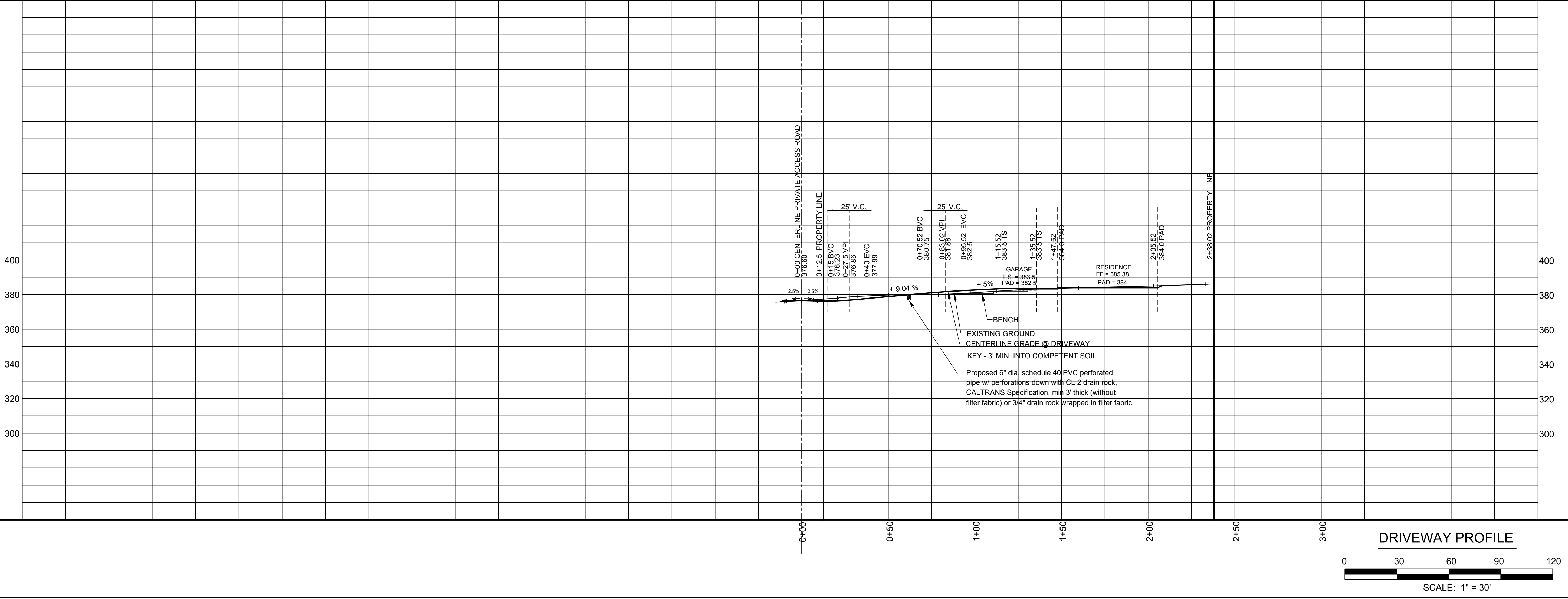
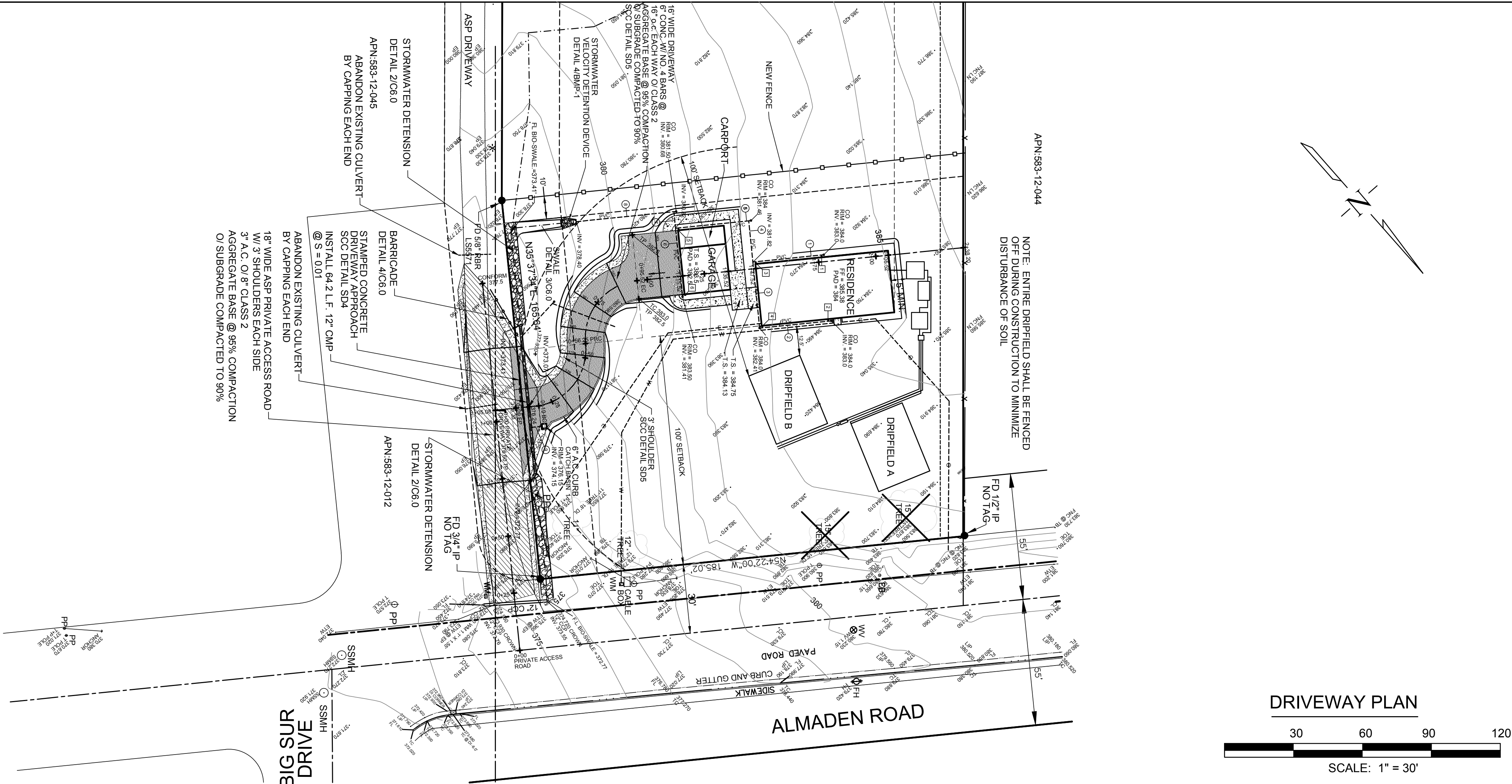
REVISIONS	
Number	Date

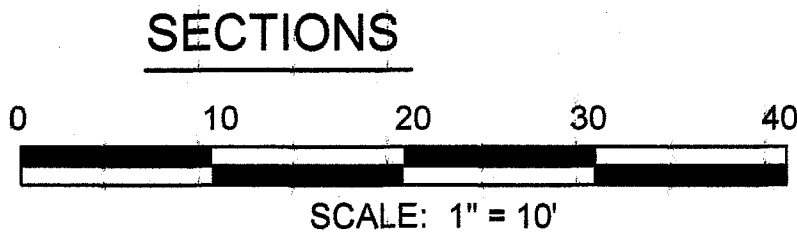
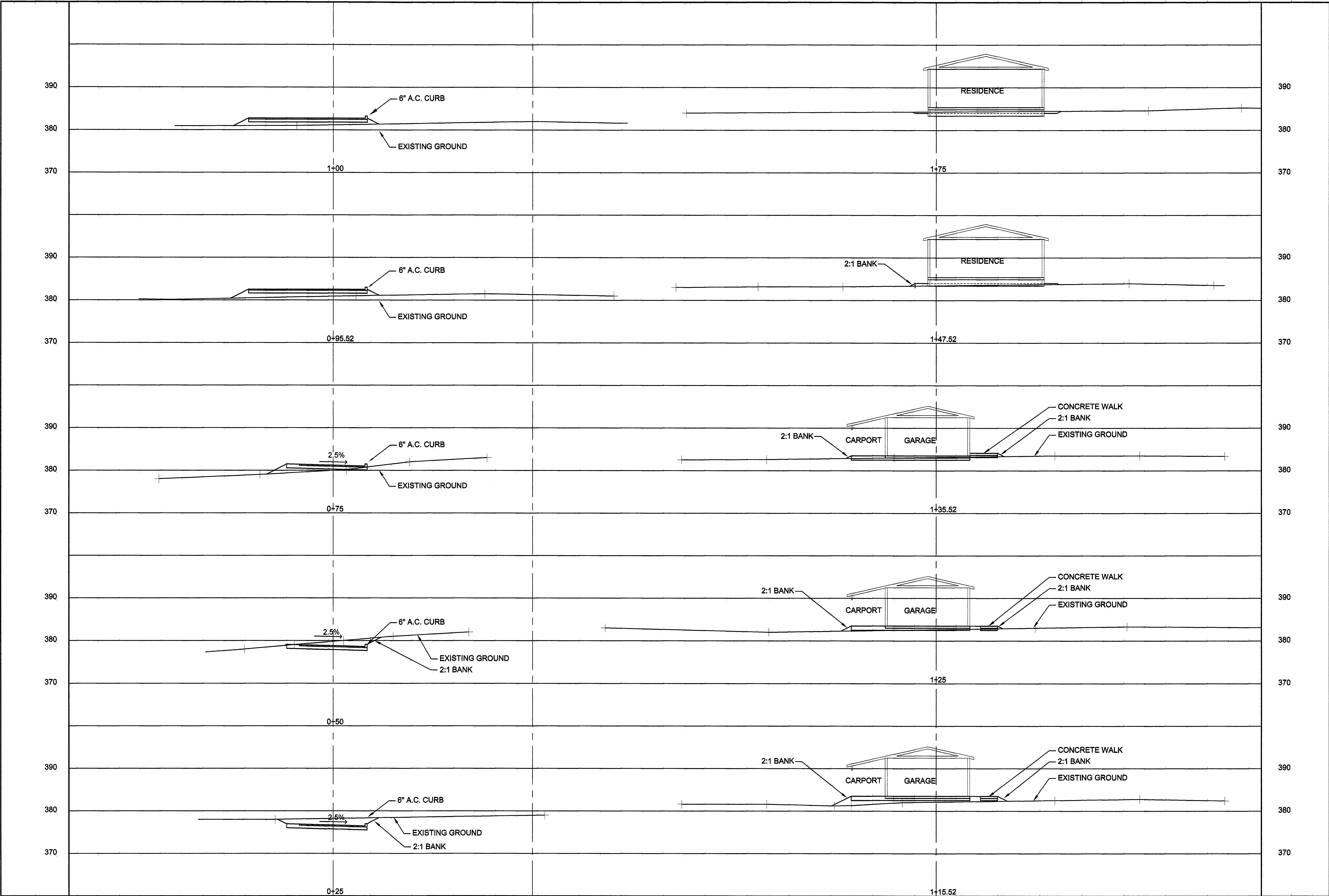
ROBERT W. STEUER - CIVIL ENGINEER
R.C.E. 37251
11133 FAIRVIEW AVENUE
SAN JOSE, CALIFORNIA 95125
(408)-981-5844



PRELIMINARY GRADING AND DRAINAGE PLAN
LANDS OF CHANDRASEKARAN
APN 583-12-010
ALMADEN ROAD, SAN JOSE
SANTA CLARA COUNTY, CALIFORNIA

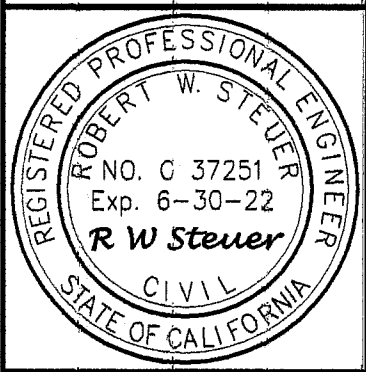
DRIVEWAY PLAN / PROFILE
DATE: 4-8-20
SCALE: 1" = 30'
DRAWN: RS
JOB: 6-20
APN: 583-12-010
CO. FILE:
SHEET
C4.0
OF 9 SHEETS





REVISIONS	
Number	Date

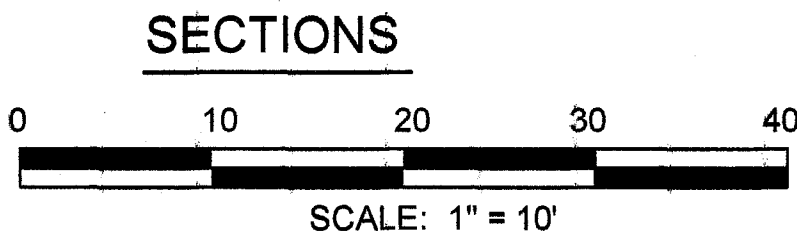
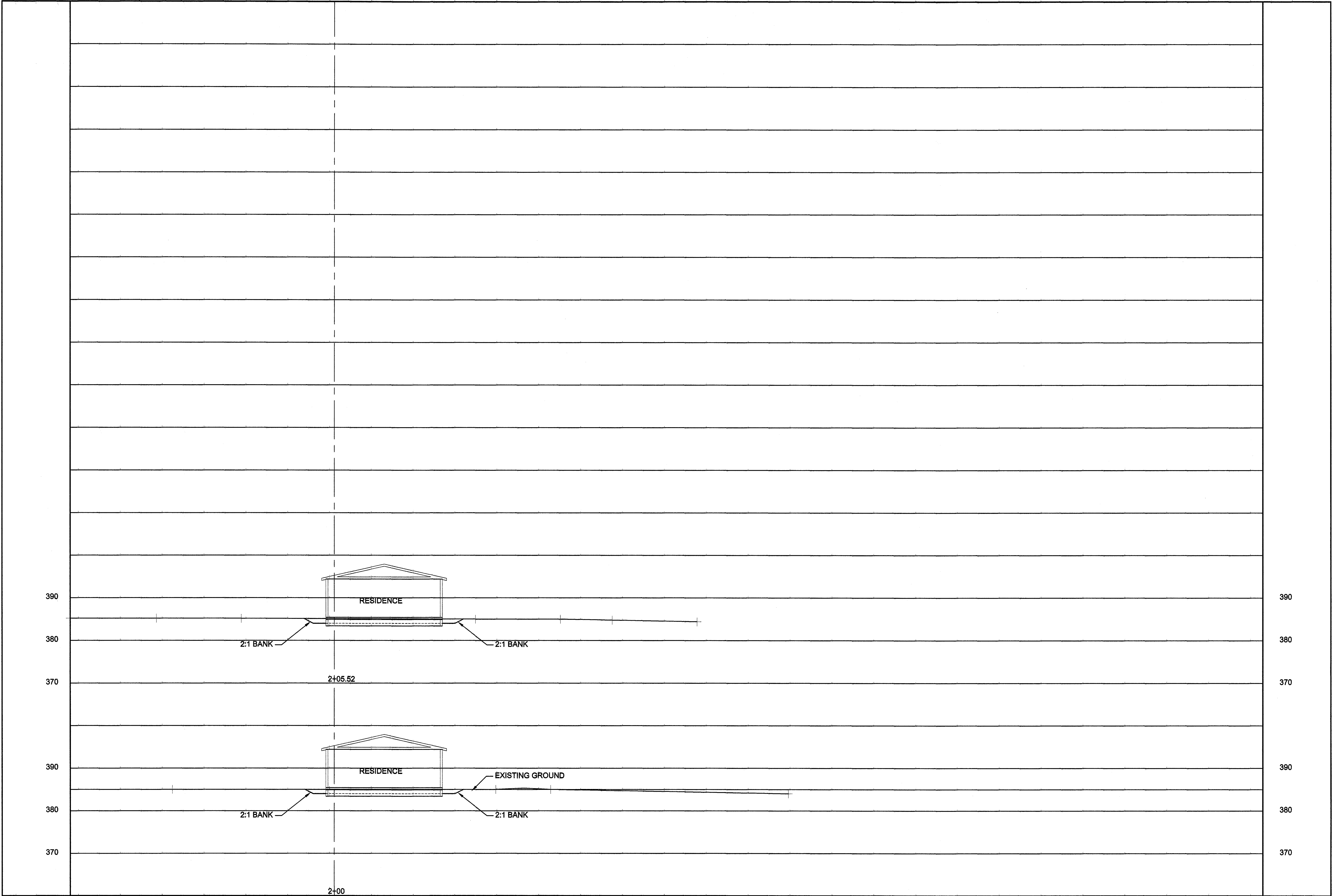
ROBERT W. STEUER - CIVIL ENGINEER
R.C.E. 37251
1133 FAIRVIEW AVENUE
SAN JOSE, CALIFORNIA 95125
(408)-981-5844



PRELIMINARY GRADING AND DRAINAGE PLAN
LANDS OF CHANDRASEKARAN
APN 583-12-010
ALMADEN ROAD, SAN JOSE
SANTA CLARA COUNTY, CALIFORNIA

SECTIONS

DATE:	4-8-20
SCALE:	1" = 10'
DRAWN:	RS
JOB:	6-20
APN:	583-12-010
CO. FILE:	
SHEET	C5.0
OF 8 SHEETS	



REVISIONS	
Number	Date

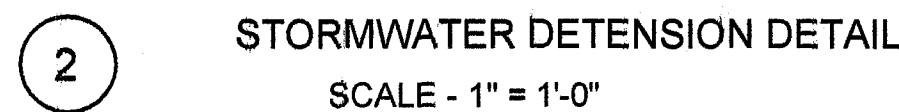
ROBERT W. STEUER - CIVIL ENGINEER
R.C.E. 37251
1133 FAIRVIEW AVENUE
SAN JOSE, CALIFORNIA 95125
(408)-981-5844



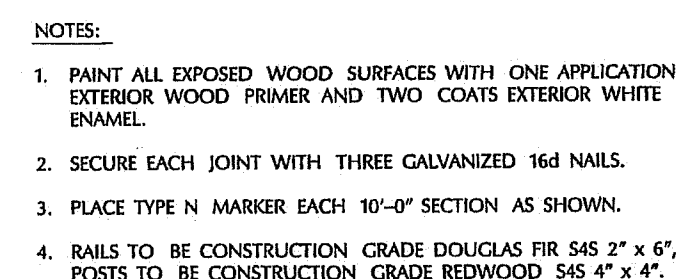
PRELIMINARY GRADING AND DRAINAGE PLAN
LANDS OF CHANDRASEKARAN
APN 583-12-010
ALMADEN ROAD, SAN JOSE
SANTA CLARA COUNTY, CALIFORNIA

SECTIONS

DATE:	4-8-20
SCALE:	1" = 10'
DRAWN:	RS
JOB:	6-20
APN:	583-12-010
CO. FILE:	
SHEET	C5.1
OF 9 SHEETS	

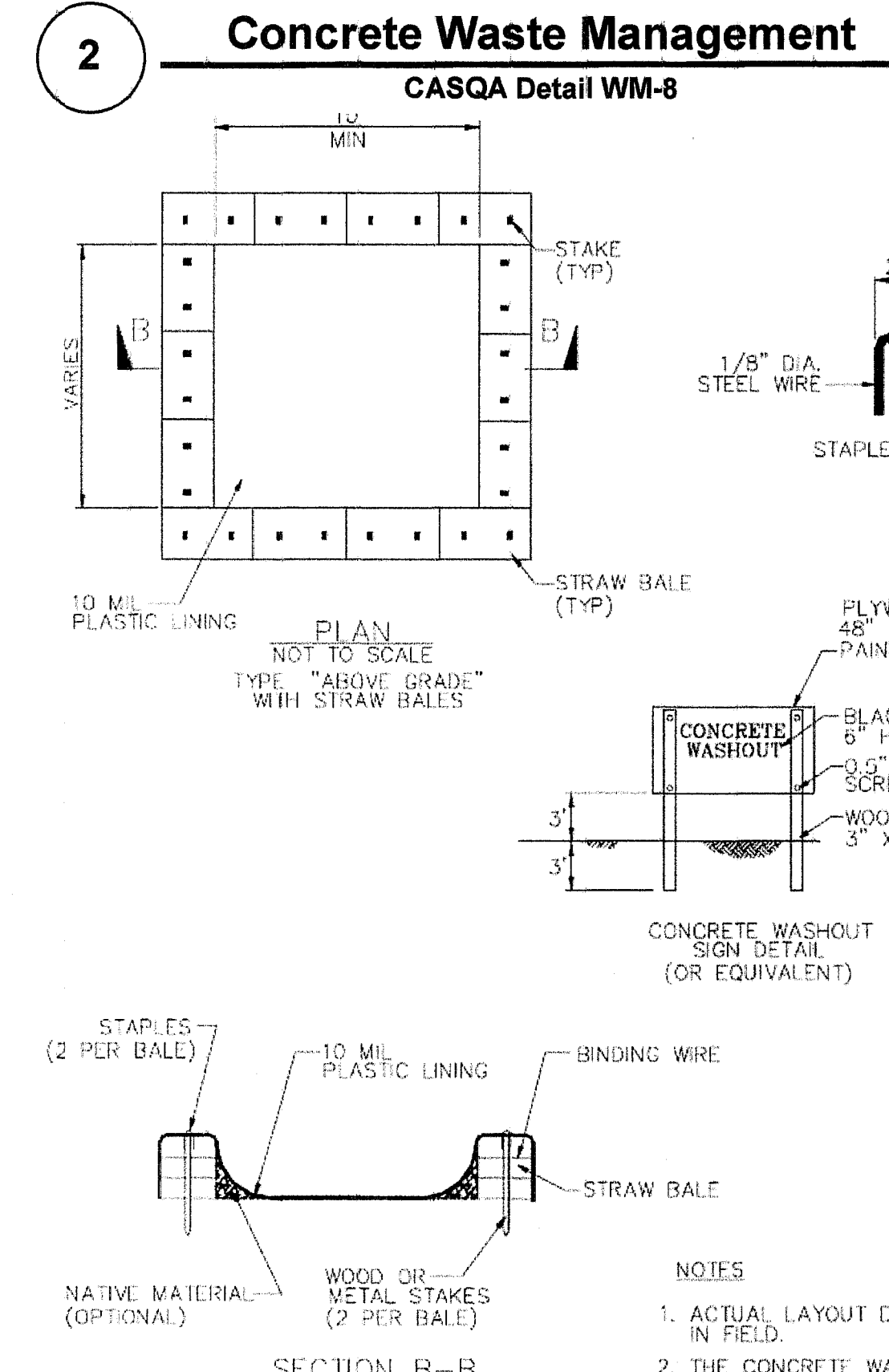
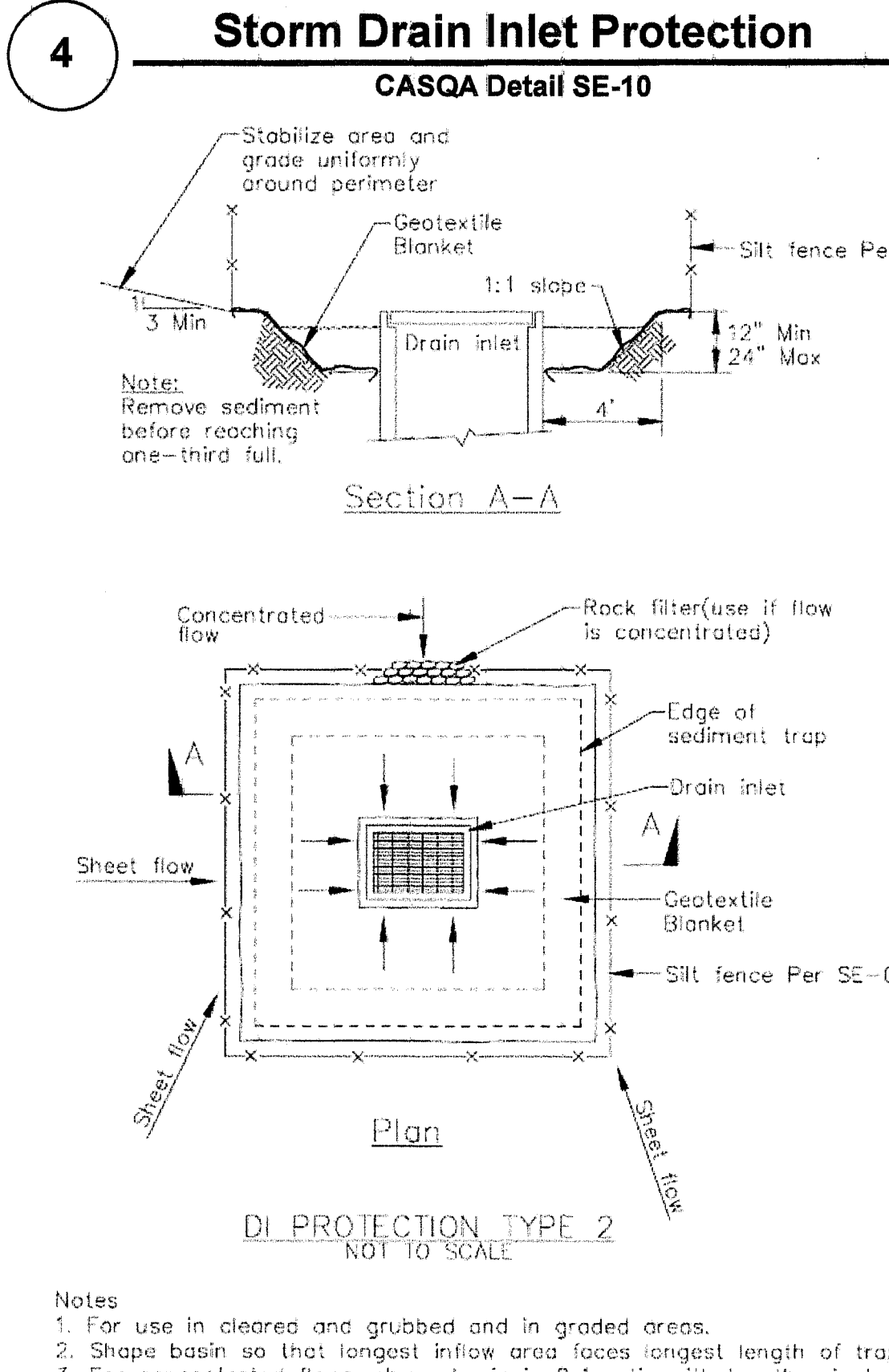
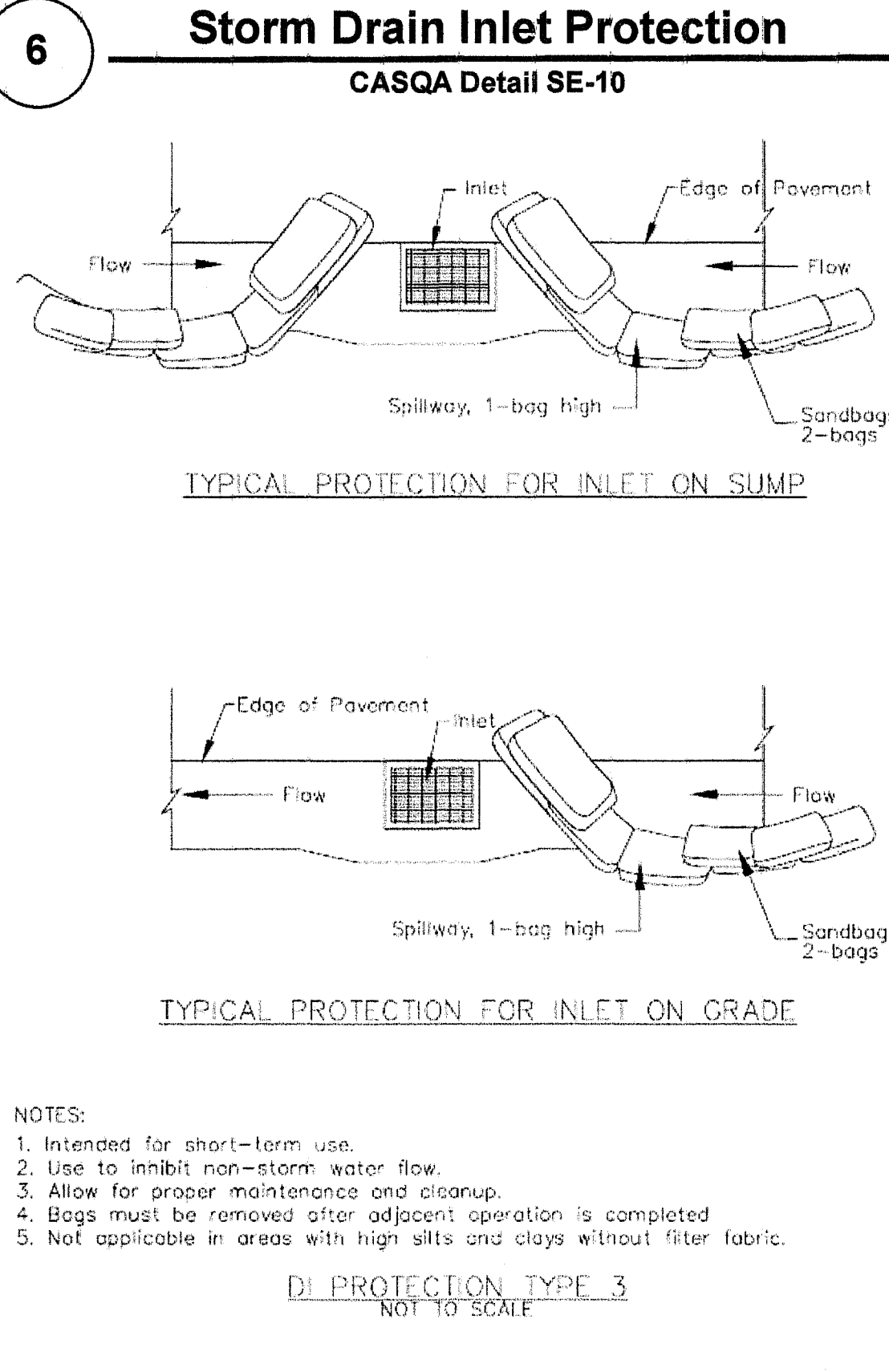
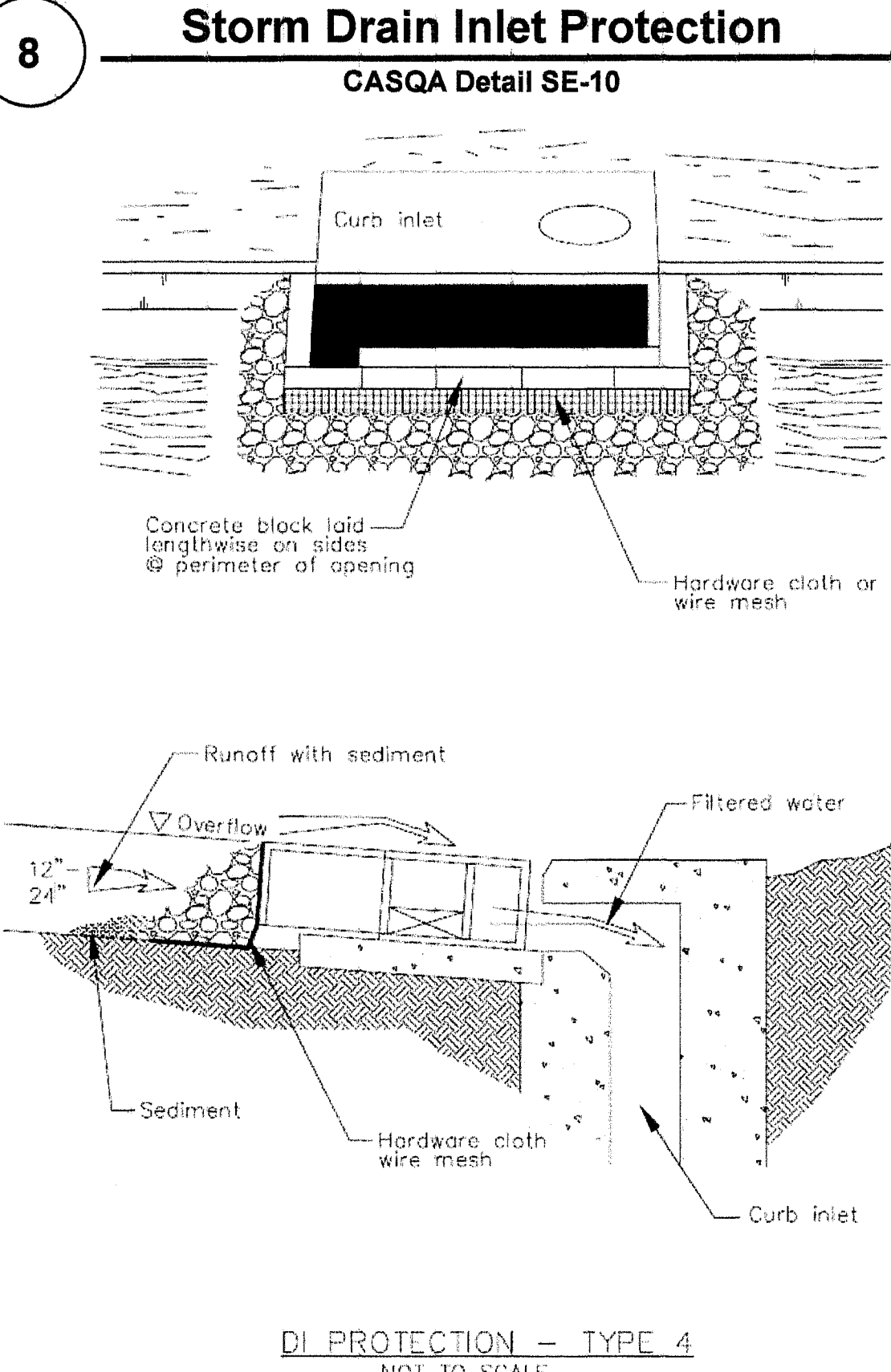
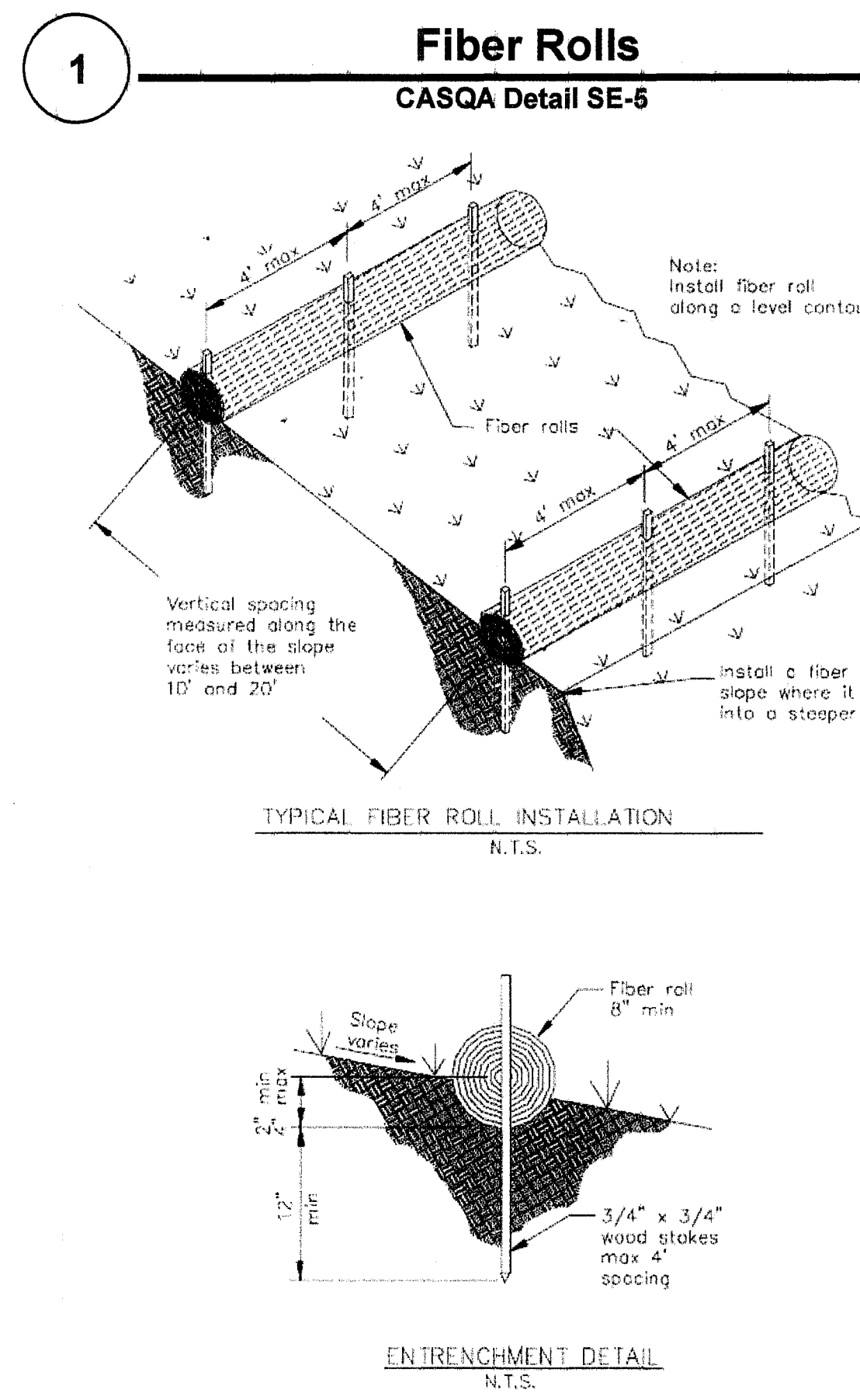
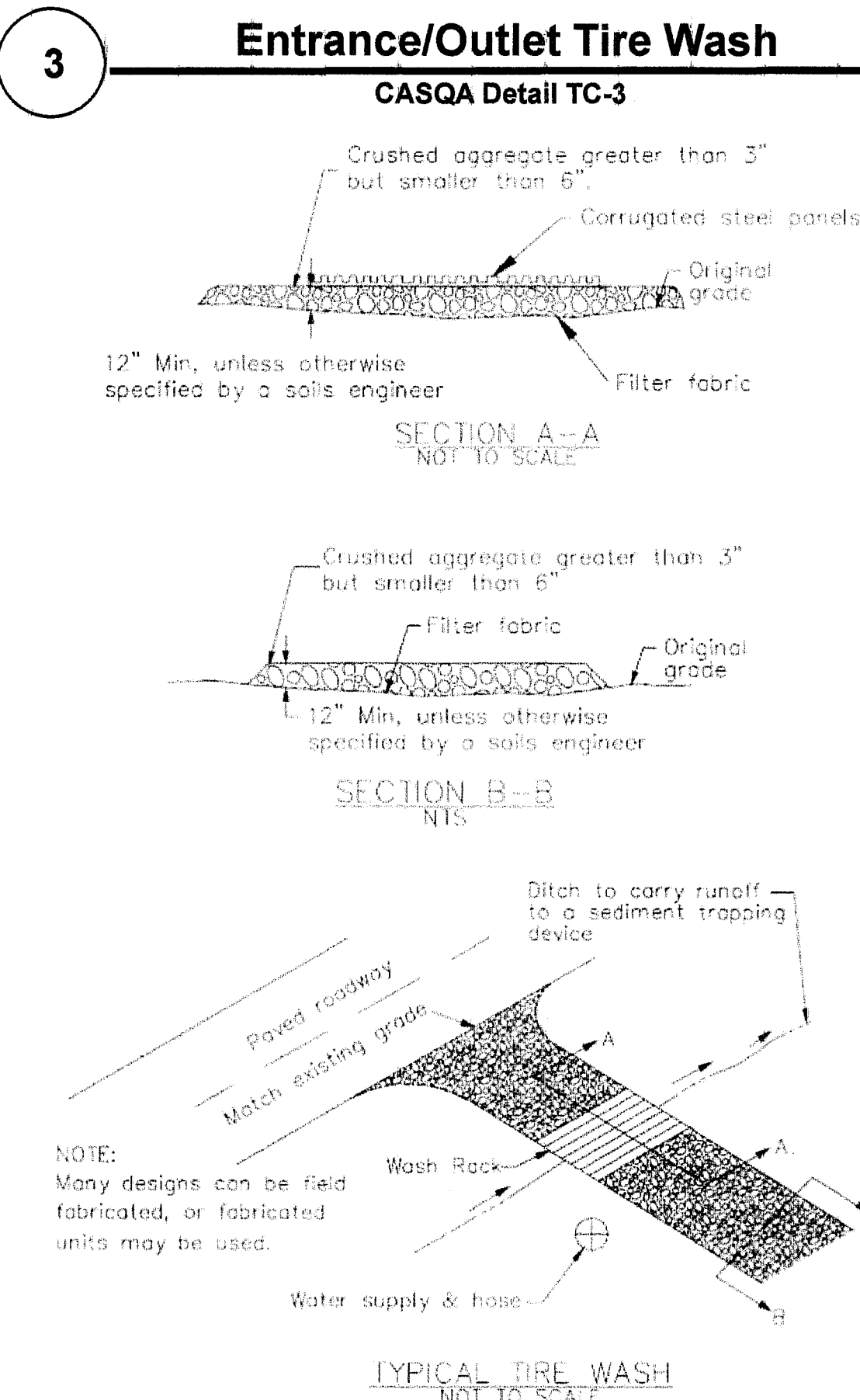
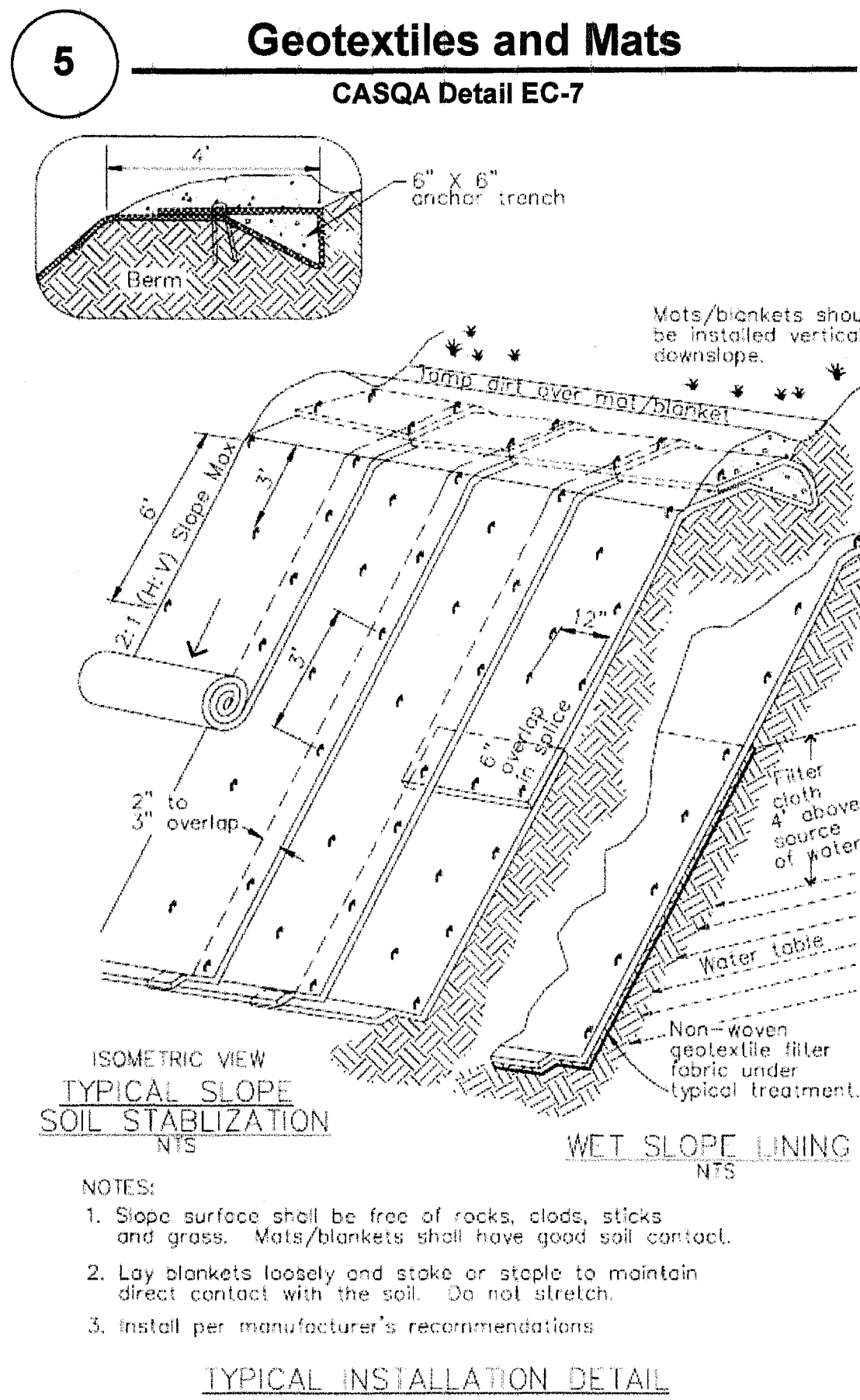
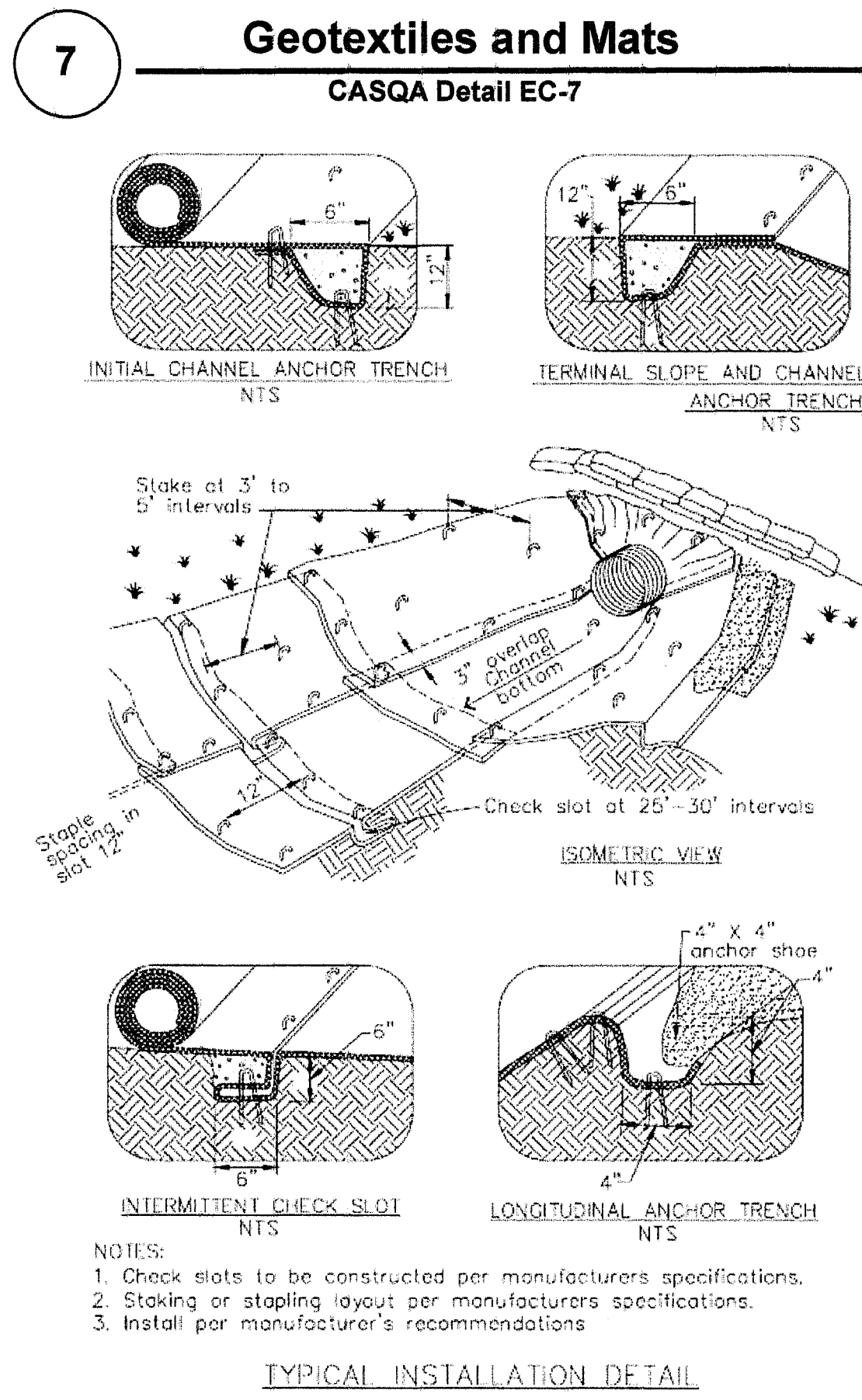


3 SWALE DETAIL
SCALE - 1" = 1'-0"



BARRICADE DETAIL

DATE:	4-8-20
SCALE:	1" = 1'-0"
DRAWN:	RS
JOB:	6-20
APN:	583-12-010
CO. FILE:	
SHEET	
C6.0	
OF 9 SHEETS	

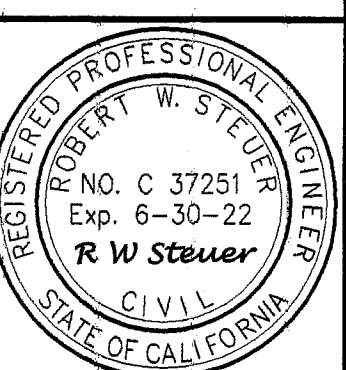


Source for Graphics: California Stormwater BMP Handbook, California Stormwater Quality Association, January 2003.
Available from www.cabmphandbooks.com.



REVISIONS	
Number	Date

ROBERT W. STEUER - CIVIL ENGINEER
R.C.E. 37251
1133 FAIRVIEW AVENUE
SAN JOSE, CALIFORNIA 95125
(408)-981-5844



PRELIMINARY GRADING AND DRAINAGE PLAN
LANDS OF CHANDRASEKHARAN
APN 583-12-010
ALMADEN ROAD, SAN JOSE
SANTA CLARA COUNTY, CALIFORNIA

EROSION CONTROL DETAILS	
DATE:	4-8-20
JOB:	6-20
APN:	583-12-010
CO. FILE:	