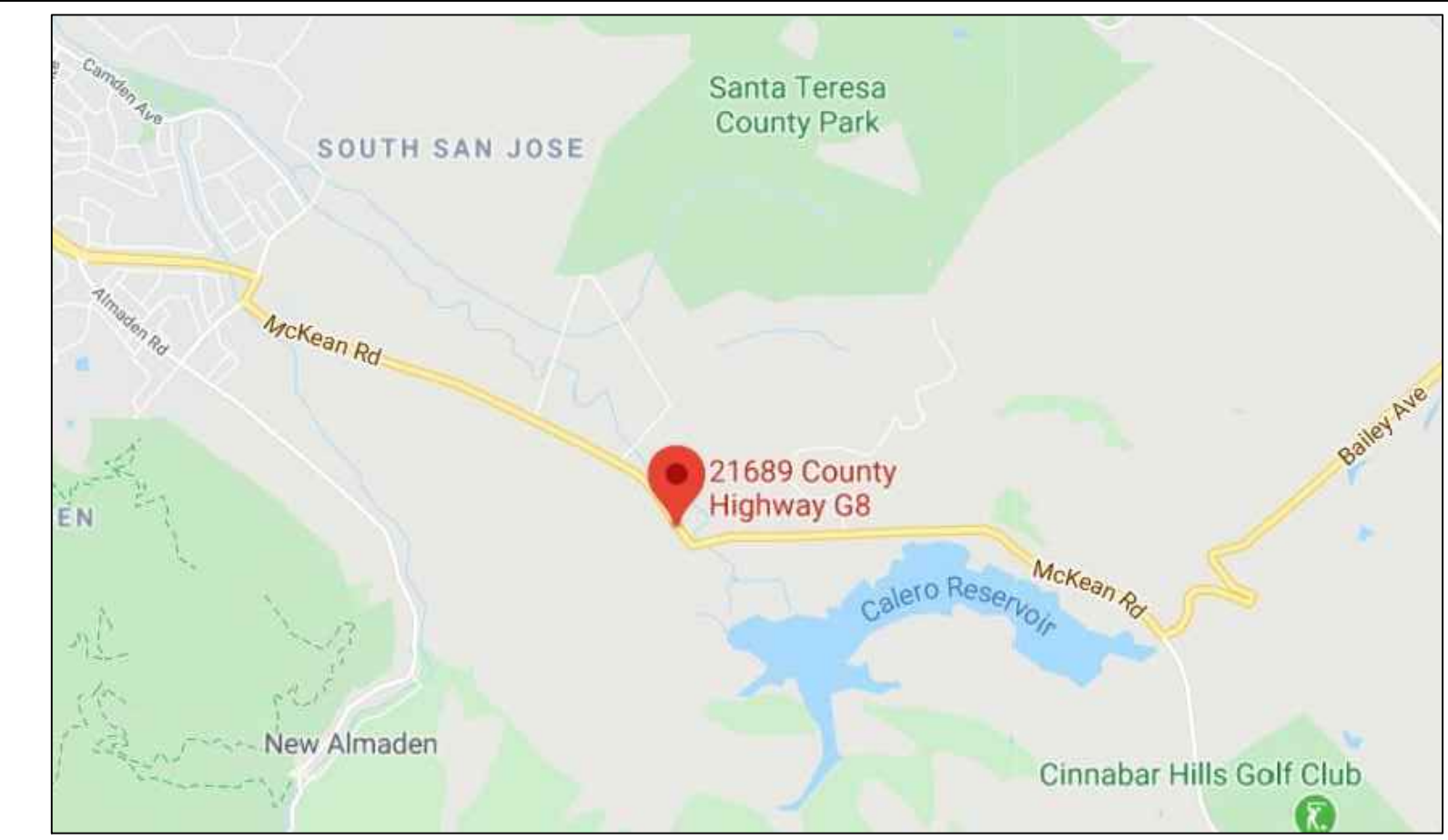


LEGEND

- — — — — PROPERTY LINE
- - - - - RIGHT OF WAY
- - - - - EASEMENT LINE
- - - - - FUTURE WIDTH LINE
- - - - - CENTERLINE
- - - - - TOP OF BANK
- * * * * * FENCE



**LOCATION MAP
NTS**



PROPERTY INFORMATION

LOT SIZE: 7.62 ac GROSS
 ZONING: A-20ac-SR
 DISTURBED AREA: 17,500 SF
 IMPERVIOUS AREA: 9,354 SF

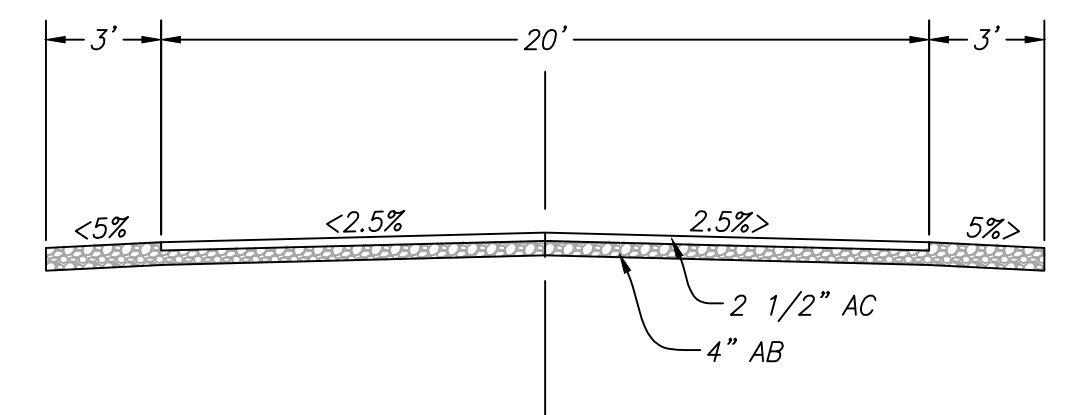
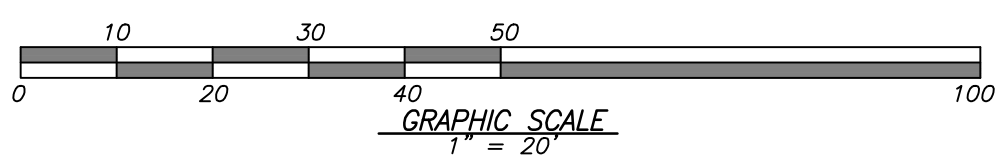
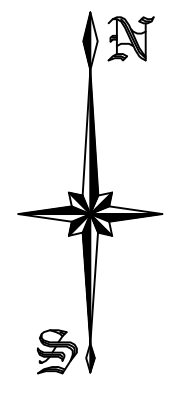
IMPROVEMENT	EARTHWORK QUANTITY (cubic yards)		MAXIMUM DEPTH (feet)	
	CUT	FILL	CUT	FILL
Driveway	0	61	0	2.9
Access Road	34	4	0.9	0.8
Landscaping	45	41	0	2.7
Walton Ave	44	0	1	0
TOTAL	123	106		
Building Pad	344	0	0	2.7

SHEET INDEX

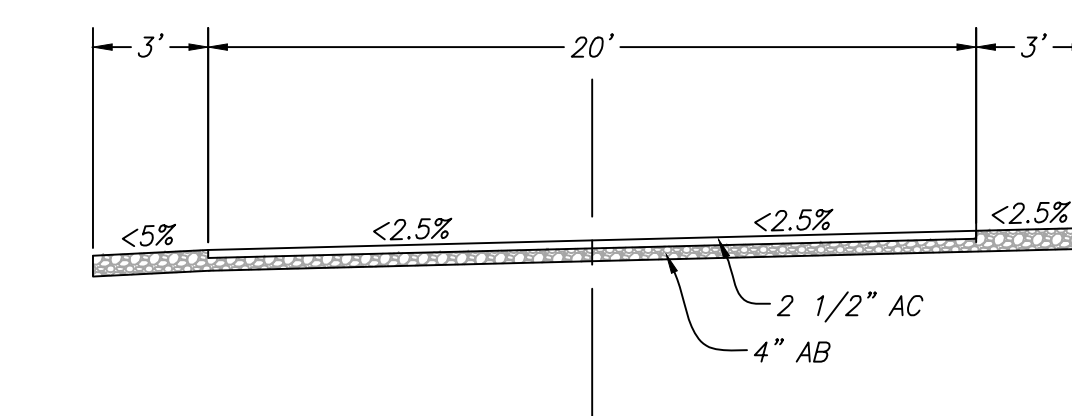
1. OVERALL SITE PLAN
2. DETAILED SITE PLAN
3. SECTIONS

DATE	OCTOBER 30, 2020	REVISIONS	
SCALE	1" = 40'	DRAWN BY	PBS/SD
CHECKED BY		DATE	
Charles W. Davidson Co. A CALIFORNIA CORPORATION CONSULTING CIVIL ENGINEERS 255 W. (468) 245-5162 FAX (468) 982-1311 TEL. (468) 245-5162			
SUPERVISED BY		REGISTERED CIVIL ENGINEER NO.	
OVERALL SITE PLAN FOR BUILDING SITE APPROVAL LANDS OF MCKEAN ROAD ASSOCIATES SANTA CLARA COUNTY, CALIFORNIA			
JOB NO.	1844	SHEET	1
OF			3

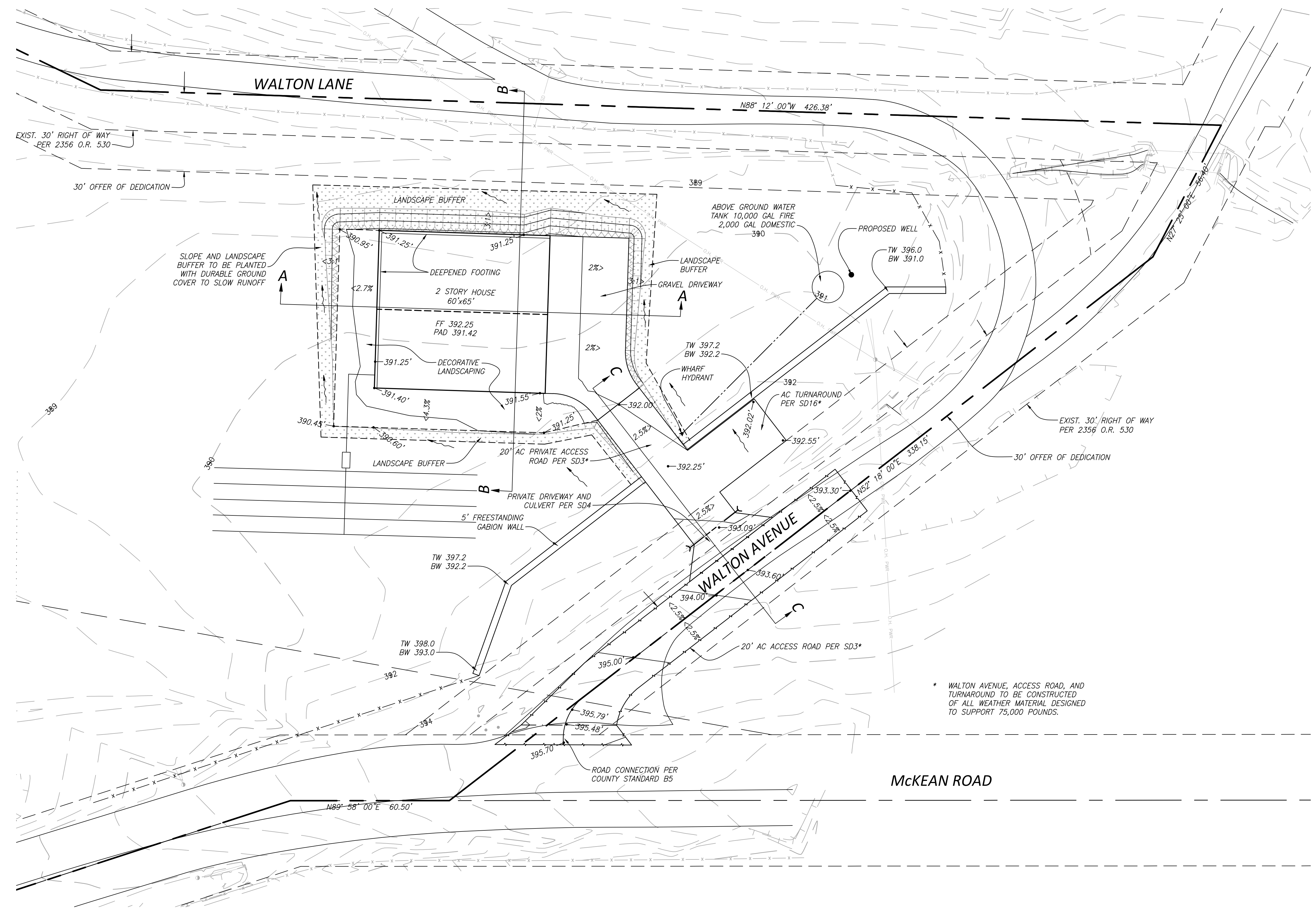
PLOTTER: PLOT01.DWG 11/24/2020 09:58 AM
 C:\USERS\ADMINISTRATOR\DRAWINGS\PROJECTS\1844\1844\1844 SITE PLAN



PRIVATE ACCESS ROAD
TYPICAL SECTION



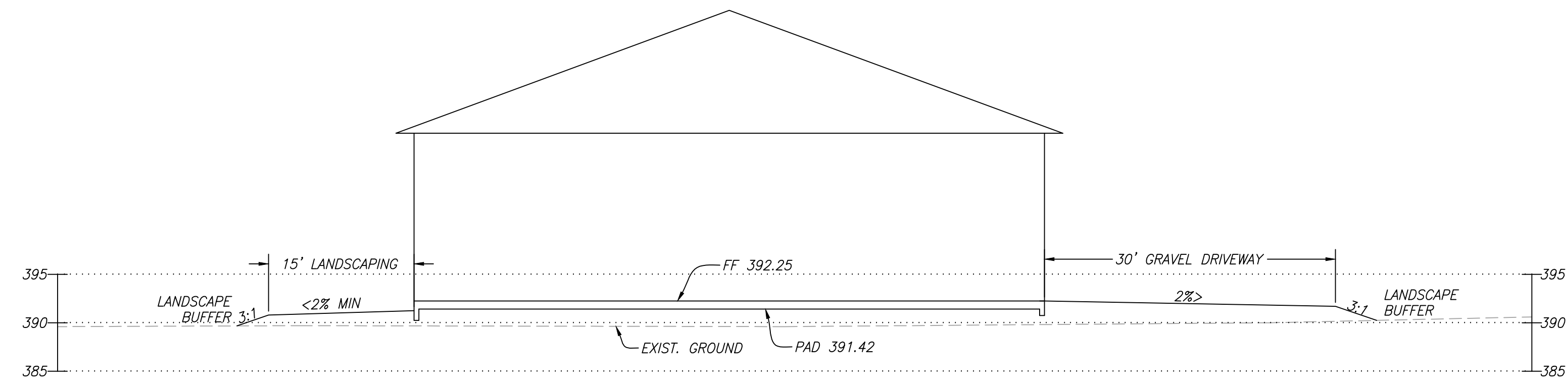
WALTON AVENUE
TYPICAL SECTION



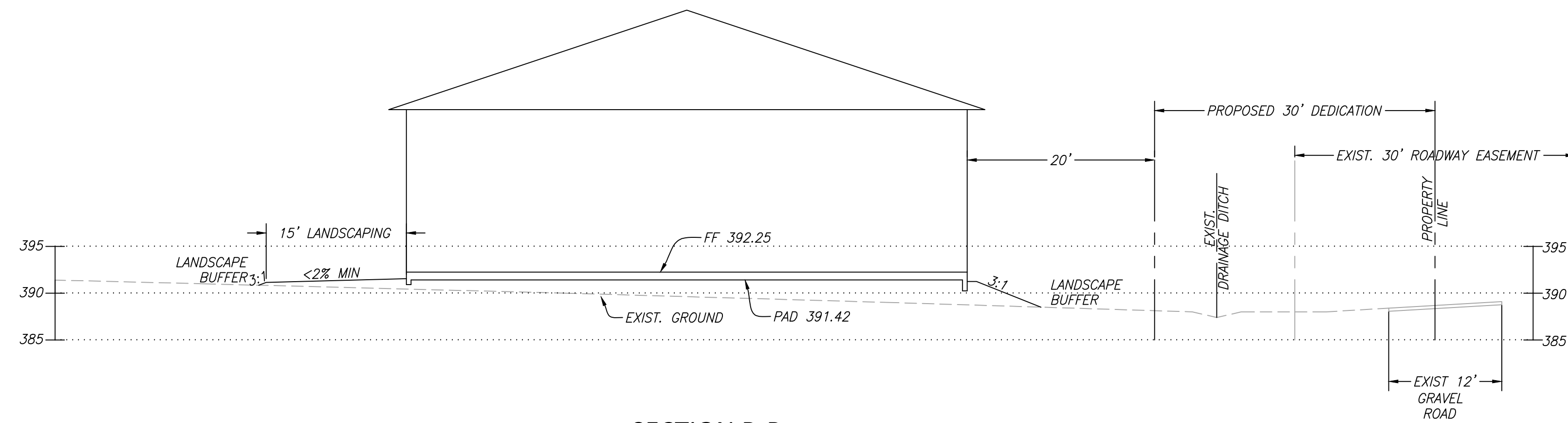
* WALTON AVENUE, ACCESS ROAD, AND
TURNAROUND TO BE CONSTRUCTED
OF ALL WEATHER MATERIAL DESIGNED
TO SUPPORT 75,000 POUNDS.

PLOTTER: PLOT01.DWG 11/24/2020 11:21 AM
 C:\USERS\ADMINISTRATOR\DRAWINGS\PROJECTS\184\LANDSCAPE\184A_SIT PLAN.dwg

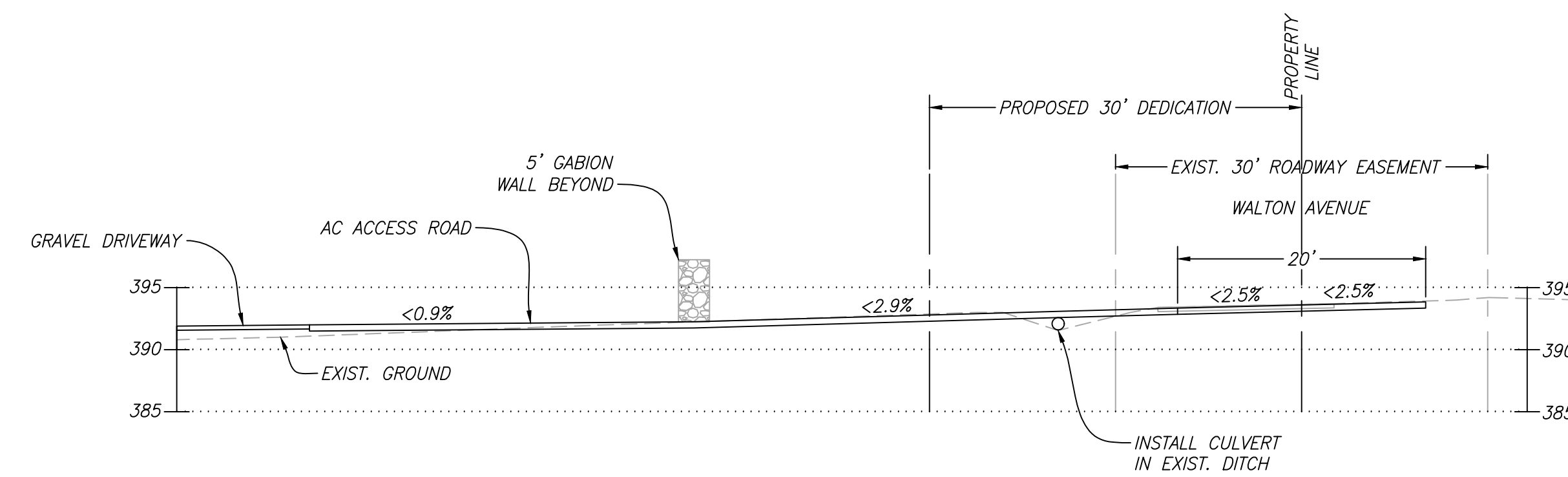
DATE	REVISIONS
OCTOBER 30, 2020	
SCALE	1" = 20'
DRAWN BY	FBS
CHECKED BY	
SUPERVISED BY Charles W. Davidson, Inc. A CALIFORNIA CORPORATION CONSULTING CIVIL ENGINEERS 255 W. (468) 255-5162 FAX (468) 982-1511	
DETAILED SITE PLAN LANDS OF MCKEAN ROAD ASSOCIATES 12345 MCKEAN ROAD SANTA CLARA COUNTY CALIFORNIA	
JOB NO.	1844
SHEET	2
OF	3



SECTION A-A



SECTION B-B



SECTION C-C

PLOTTER: PLOT01.DWG 11/24/2020 11:58 AM
 C:\USERS\ADMINISTRATOR\DRAWING\PROJECTS\1844\LANDSCAPE\1844 SITE PLAN

DATE	OCTOBER 30, 2020
SCALE	1" = 10'
DRAWN BY	FBS
CHECKED BY	
REVISIONS	
DATE	
SCALE	
DRAWN BY	
CHECKED BY	
SUPERVISED BY REGISTERED CIVIL ENGINEER NO. _____ EXPIRES _____	
SECTIONS LANDS OF MCKEAN ROAD ASSOCIATES 12345 MCKEAN ROAD SANTA CLARA COUNTY CALIFORNIA	
JOB NO.	1844
SHEET	3
OF	3
Charles W. Davidson Co. A CALIFORNIA CORPORATION CONSULTING CIVIL ENGINEERS 255 N. ... TEL: (408) 255-5162 FAX: (408) 982-1311	