

**Stevens Creek Quarry - Cupertino (CERSID: 10588948)****Facility Information Accepted Dec 28, 2017**

Submitted on 12/12/2017 12:31:14 PM by *Jason Voss* of STEVENS CREEK QUARRY (CUPERTINO, CA)  
Submittal was **Accepted** on 12/28/2017 4:55:18 PM by Yoni Fajardo

- Business Activities
- Business Owner/Operator Identification

**Hazardous Materials Inventory Accepted Dec 28, 2017**

Submitted on 12/12/2017 12:31:14 PM by *Jason Voss* of STEVENS CREEK QUARRY (CUPERTINO, CA)  
Submittal was **Accepted** on 12/28/2017 4:55:23 PM by Yoni Fajardo

- Hazardous Material Inventory (31)
- Site Map (Official Use Only)
  - *Annotated Site Map (Official Use Only)* (Adobe PDF, 4698KB)

**Emergency Response and Training Plans Accepted Dec 28, 2017**

Submitted on 12/12/2017 12:31:14 PM by *Jason Voss* of STEVENS CREEK QUARRY (CUPERTINO, CA)  
Submittal was **Accepted** on 12/28/2017 4:55:27 PM by Yoni Fajardo

- Emergency Response/Contingency Plan
  - *Emergency Response/Contingency Plan* (Adobe PDF, 2196KB)
- Employee Training Plan
  - Provided In Submittal Element: Emergency Response and Training Plans

## Site Identification

## Stevens Creek Quarry - Cupertino

12100 Stevens Canyon Rd

Cupertino, CA 95014

County

Santa Clara

CERS ID

10588948

EPA ID Number

CAL000043736

## Submittal Status

Submitted on 12/12/2017 by Jason Voss of STEVENS CREEK QUARRY (CUPERTINO, CA)

Submittal was **Accepted**; Processed on 12/28/2017 by Yoni Fajardo for Santa Clara County Environmental Health

## Hazardous Materials

Does your facility have on site (for any purpose) at any one time, hazardous materials at or above 55 gallons for liquids, 500 pounds for solids, or 200 cubic feet for compressed gases (include liquids in ASTs and USTs); or is regulated under more restrictive inventory local reporting requirements (shown below if present); or the applicable Federal threshold quantity for an extremely hazardous substance specified in 40 CFR Part 355, Appendix A or B; or handle radiological materials in quantities for which an emergency plan is required pursuant to 10 CFR Parts 30, 40 or 70?

Yes

## Underground Storage Tank(s) (UST)

Does your facility own or operate underground storage tanks?

No

## Hazardous Waste

Is your facility a Hazardous Waste Generator?

Yes

Does your facility treat hazardous waste on-site?

No

Is your facility's treatment subject to financial assurance requirements (for Permit by Rule and Conditional Authorization)?

No

Does your facility consolidate hazardous waste generated at a remote site?

No

Does your facility need to report the closure/removal of a tank that was classified as hazardous waste and cleaned on-site?

No

Does your facility generate in any single calendar month 1,000 kilograms (kg) (2,200 pounds) or more of federal RCRA hazardous waste, or generate in any single calendar month, or accumulate at any time, 1 kg (2.2 pounds) of RCRA acute hazardous waste; or generate or accumulate at any time more than 100 kg (220 pounds) of spill cleanup materials contaminated with RCRA acute hazardous waste.

No

Is your facility a Household Hazardous Waste (HHW) Collection site?

No

## Excluded and/or Exempted Materials

Does your facility recycle more than 100 kg/month of excluded or exempted recyclable materials (per HSC 25143.2)?

No

Does your facility own or operate ASTs above these thresholds? Store greater than 1,320 gallons of petroleum products (new or used) in aboveground tanks or containers.

Yes

Does your facility have Regulated Substances stored onsite in quantities greater than the threshold quantities established by the California Accidental Release prevention Program (CalARP)?

No

## Additional Information

No additional comments provided.

**Facility/Site****Stevens Creek Quarry - Cupertino**

12100 Stevens Canyon Rd  
Cupertino, CA 95014

CERS ID  
**10588948**

**Submittal Status**

Submitted on 12/12/2017 by *Jason Voss* of STEVENS CREEK QUARRY (CUPERTINO, CA)

Submittal was **Accepted**; Processed on 12/28/2017 by *Yoni Fajardo* for Santa Clara County Environmental Health

**Identification**

Stevens Creek Quarry, Inc.

Operator Phone  
(408) 253-2512

Business Phone  
(408) 253-2512

Business Fax  
(408) 253-6445

Beginning Date

Ending Date

Dun & Bradstreet

SIC Code  
1429

Primary NAICS

**Facility/Site Mailing Address**

12100 Stevens Canyon Road  
Cupertino, CA 95014

**Primary Emergency Contact**

Jason Voss

Title

Quarry Operations Manager

Business Phone  
(408) 253-2512

24-Hour Phone  
(408) 640-6160

Pager Number

**Owner**

Stevens Creek Quarry, Inc.

(408) 253-2512

12100 Stevens Canyon Road  
Cupertino, CA 94015

**Secondary Emergency Contact**

Dan Trammell

Title

Foreman

Business Phone  
(408) 253-2512

24-Hour Phone  
(408) 640-8405

Pager Number

**Billing Contact**

Stevens Creek Quarry, Inc.

(408) 253-2512

jvoss@scqinc.com

12100 Stevens Canyon Road  
Cupertino, CA 94015

**Environmental Contact**

Jason Voss

(408) 640-6160

jvoss@scqinc.com

12100 Stevens Canyon Road  
Cupertino, CA 94015

Name of Signer

Jason Voss

Signer Title

Quarry Operations Manager

Document Preparer

Mignone Wood

Additional Information

**Locally-collected Fields**

Some or all of the following fields may be required by your local regulator(s).

**Property Owner**

STEVENS CREEK QUARRY INC.

Phone

(408) 253-2512

Mailing Address

12100 Stevens Canyon Road  
CUPERTINO, CA 94015

Assessor Parcel Number (APN)

351-10-019 etc.

Number of Employees

65

Facility ID

FA0200754

## Hazardous Materials And Wastes Inventory Matrix Report

CERS Business/Org.	STEVENS CREEK QUARRY				Chemical Location		CERS ID	10588948		
Facility Name	Stevens Creek Quarry - Cupertino				Fuel Station		Facility ID	FA0200754		
	12100 Stevens Canyon Rd, Cupertino 95014						Status	Submitted on 12/12/2017 12:31 PM		
								Hazardous Components (For mixture only)		
DOT Code/Fire Haz. Class	Common Name	Unit	Quantities			Annual Waste Amount	Federal Hazard Categories	Component Name		
			Max. Daily	Largest Cont.	Avg. Daily			% Wt	EHS	CAS No.
DOT: 3 - Flammable and Combustible Liquids	Diesel Fuel No. 2	Gallons	12000	12000	6000	0	- Fire - Acute Health			
	CAS No	State	Storage Container		Pressue					
	68476-34-6	Liquid	Aboveground Tank		Ambient	Waste Code				
Combustible Liquid, Class II	Map: Figure 2    Grid: D5	Type			Temperature					
		Pure	Days on Site: 365		Ambient					

## Hazardous Materials And Wastes Inventory Matrix Report

CERS Business/Org.		STEVENS CREEK QUARRY				Chemical Location		CERS ID		10588948			
Facility Name		Stevens Creek Quarry - Cupertino				Lube Truck - mobile but parks at Quarry Tractor Shop				Facility ID		FA0200754	
		12100 Stevens Canyon Rd, Cupertino 95014								Status		Submitted on 12/12/2017 12:31 PM	

## Hazardous Materials And Wastes Inventory Matrix Report

CERS Business/Org.	<b>STEVENS CREEK QUARRY</b>	Chemical Location	CERS ID	<b>10588948</b>
Facility Name	<b>Stevens Creek Quarry - Cupertino</b>	<b>Lube Trucks (2) - mobile; parks at Quarry Tractor Shop</b>	Facility ID	<b>FA0200754</b>
	12100 Stevens Canyon Rd, Cupertino 95014		Status	<b>Submitted on 12/12/2017 12:31 PM</b>

DOT Code/Fire Haz. Class	Common Name	Unit	Quantities			Annual Waste Amount	Federal Hazard Categories	Hazardous Components (For mixture only)		
			Max. Daily	Largest Cont.	Avg. Daily			Component Name	% Wt	EHS CAS No.
DOT: 3 - Flammable and Combustible Liquids	<b>Diesel Fuel No. 2</b>	<b>Gallons</b>	<b>2000</b>	<b>2000</b>	<b>2000</b>	<b>0</b>	- Fire - Acute Health			
	CAS No 68476-34-6 Map: Figure 2 Grid: D6	State Liquid Type Pure	Storage Container Other		Pressue Ambient Temperature Ambient	Waste Code				
Combustible Liquid, Class II										
	<b>Ethylene Glycol</b>	<b>Gallons</b>	<b>80</b>	<b>80</b>	<b>80</b>	<b>0</b>	- Acute Health - Chronic health			
	CAS No 107-21-1 Map: Figure 2 Grid: D6	State Liquid Type Pure	Storage Container Other Days on Site: 365		Pressue Ambient Temperature Ambient	Waste Code				
Combustible Liquid, Class III-B										
	<b>Grease</b>	<b>Gallons</b>	<b>55</b>	<b>55</b>	<b>55</b>					
	CAS No 68153-81-1 Map: Figure 2 Grid: D6	State Liquid Type Pure	Storage Container Other Days on Site: 365		Pressue Ambient Temperature Ambient	Waste Code				
DOT: 3 - Flammable and Combustible Liquids	<b>Motor Oil</b>	<b>Gallons</b>	<b>80</b>	<b>80</b>	<b>80</b>		- Fire	VARIOUS LUBRICATING BASE OILS	85 %	6474X-XX-X
	CAS No	State Liquid Type Mixture	Storage Container Other Days on Site: 365		Pressue Ambient Temperature Ambient	Waste Code 221		ADDITIVE PACKAGE, INCLUDING ZINC ALKYLDITHIOPHOSPHATE	15 % 2 %	MIXTURE 68649-42-3
Combustible Liquid, Class III-B	Map: Figure 2 Grid: D6									
	<b>Motor Oil</b>	<b>Gallons</b>	<b>80</b>	<b>80</b>	<b>80</b>		- Fire	VARIOUS LUBRICATING BASE OILS	85 %	6474X-XX-X
	CAS No	State Liquid Type Mixture	Storage Container Other Days on Site: 365		Pressue Ambient Temperature Ambient	Waste Code 221		ADDITIVE PACKAGE, INCLUDING ZINC ALKYLDITHIOPHOSPHATE	15 % 2 %	MIXTURE 68649-42-3
Combustible Liquid, Class III-B	Map: Figure 2 Grid: D6									
	<b>Motor Oil</b>	<b>Gallons</b>	<b>80</b>	<b>80</b>	<b>80</b>		- Fire	VARIOUS LUBRICATING BASE OILS	85 %	6474X-XX-X
	CAS No	State Liquid Type Mixture	Storage Container Other Days on Site: 365		Pressue Ambient Temperature Ambient	Waste Code 221		ADDITIVE PACKAGE, INCLUDING ZINC ALKYLDITHIOPHOSPHATE	15 % 2 %	MIXTURE 68649-42-3
Combustible Liquid, Class III-B	Map: Figure 2 Grid: D6									

## Hazardous Materials And Wastes Inventory Matrix Report

CERS Business/Org. STEVENS CREEK QUARRY		Chemical Location				CERS ID 10588948				
Facility Name Stevens Creek Quarry - Cupertino		Middle Quarry Floor - Fueling Station				Facility ID FA0200754				
12100 Stevens Canyon Rd, Cupertino 95014						Status Submitted on 12/12/2017 12:31 PM				
						Hazardous Components (For mixture only)				
DOT Code/Fire Haz. Class	Common Name	Unit	Quantities			Annual Waste Amount	Federal Hazard Categories			
			Max. Daily	Largest Cont.	Avg. Daily			Component Name	% Wt	EHS CAS No.
DOT: 3 - Flammable and Combustible Liquids	Diesel Fuel No. 2	Gallons	10000	10000		0	- Fire - Acute Health	petroleum Distillate	100 %	68476302
	CAS No	State	Storage Container				Pressue			
	68476-30-2	Liquid	Aboveground Tank				Ambient	Waste Code		
Combustible Liquid, Class II	Map: Fig. 2 and 6 Grid: 5D	Type					Temperature			
		Pure	Days on Site: 365				Ambient			

## Hazardous Materials And Wastes Inventory Matrix Report

CERS Business/Org.	<b>STEVENS CREEK QUARRY</b>	Chemical Location	CERS ID	<b>10588948</b>
Facility Name	<b>Stevens Creek Quarry - Cupertino</b>	<b>Office Scale H0use - generator</b>	Facility ID	<b>FA0200754</b>
	12100 Stevens Canyon Rd, Cupertino 95014		Status	<b>Submitted</b> on 12/12/2017 12:31 PM

DOT Code/Fire Haz. Class	Common Name	Unit	Quantities			Annual Waste Amount	Federal Hazard Categories	Hazardous Components (For mixture only)		
			Max. Daily	Largest Cont.	Avg. Daily			Component Name	% Wt	EHS CAS No.
DOT: 3 - Flammable and Combustible Liquids	<b>Diesel Fuel No. 2</b>	<b>Gallons</b>	<b>80</b>	<b>80</b>	80	0	- Fire - Acute Health			
	<u>CAS No</u>	<u>State</u>	<u>Storage Container</u>		<u>Pressue</u>	<u>Waste Code</u>				
	68476-34-6	Liquid	Other		Ambient					
Combustible Liquid, Class II	Map: Figure 2    Grid: E6	<u>Type</u>	<u>Temperature</u>							
		Pure	Days on Site: 365		Ambient					



## Hazardous Materials And Wastes Inventory Matrix Report

CERS Business/Org. <b>STEVENS CREEK QUARRY</b>			Chemical Location				CERS ID	<b>10588948</b>		
Facility Name <b>Stevens Creek Quarry - Cupertino</b>			<b>Quarry Tractor Shop - Bldg #4</b>				Facility ID	<b>FA0200754</b>		
12100 Stevens Canyon Rd, Cupertino 95014							Status	<b>Submitted</b> on 12/12/2017 12:31 PM		
DOT Code/Fire Haz. Class	Common Name	Unit	Quantities			Annual Waste Amount	Federal Hazard Categories	Hazardous Components (For mixture only)		
			Max. Daily	Largest Cont.	Avg. Daily			Component Name	% Wt	EHS CAS No.
Combustible Liquid, Class III-B	<b>Coolant/Antifreeze</b>	<b>Gallons</b>	<b>150</b>	<b>150</b>			- Acute Health	Ethylene Glycol	50 %	107-21-1
	<u>CAS No</u>	<u>State</u>	<u>Storage Container</u>		<u>Pressue</u>	<u>Waste Code</u>	- Chronic health	Diethylene Glycol	5 %	111-46-6
	107-21-1	Liquid	Plastic/Non-metalic Drum		Ambient			Sodium 2-Ethylhexanoate	5 %	19766-89-3
	Map: Fig. 2 and 7c Grid: 5D	<u>Type</u>			<u>Temperature</u>					
		Pure	Days on Site: 365		Ambient					

## Hazardous Materials And Wastes Inventory Matrix Report

CERS Business/Org.	STEVENS CREEK QUARRY				Chemical Location		CERS ID	10588948		
Facility Name	Stevens Creek Quarry - Cupertino				Quarry Tractor Shop - Bldg. #4		Facility ID	FA0200754		
	12100 Stevens Canyon Rd, Cupertino 95014						Status	Submitted on 12/12/2017 12:31 PM		
						Annual Waste	Hazardous Components			
						Federal Hazard	(For mixture only)			
DOT Code/Fire Haz. Class	Common Name	Unit	Quantities			Amount	Categories	Component Name	% Wt	EHS CAS No.
	Gear Lube/Oil 85w-140	Gallons	Max. Daily	Largest Cont.	Avg. Daily	0		Highly-refined Petroleum lubricant oils	100 %	various
	CAS No	State	Storage Container			Pressue		Proprietary Ingredients	1 %	
	Map: Fig. 2 and 7c	Liquid	Aboveground Tank, Tank Inside			Ambient	Waste Code	Sulfurized	5 %	
	Grid: 5D	Type	Building			Temperature				
		Mixture	Days on Site: 365			Ambient				

## Hazardous Materials And Wastes Inventory Matrix Report

CERS Business/Org.		STEVENS CREEK QUARRY				Chemical Location		CERS ID	10588948	
Facility Name		Stevens Creek Quarry - Cupertino				Quarry TRactor Shop - Building #1		Facility ID	FA0200754	
		12100 Stevens Canyon Rd, Cupertino 95014						Status	Submitted on 12/12/2017 12:31 PM	
						Annual Waste	Federal Hazard	Hazardous Components		
						Amount	Categories	(For mixture only)		
DOT Code/Fire Haz. Class		Common Name	Unit	Max. Daily	Largest Cont.	Avg. Daily		Component Name	% Wt	EHS CAS No.
DOT: 2.2 - Nonflammable Gases		Argon Compressed	Cu. Feet	380	380	285	0	- Pressure		
		CAS No	State	Storage Container		Pressue	Waste Code	Release		
		7440-37-1	Gas	Cylinder		> Ambient				
		Map: map 2    Grid: Grid 6D	Type			Temperature				
			Pure	Days on Site: 365		Ambient				

## Hazardous Materials And Wastes Inventory Matrix Report

CERS Business/Org. <b>STEVENS CREEK QUARRY</b>			Chemical Location				CERS ID	<b>10588948</b>		
Facility Name <b>Stevens Creek Quarry - Cupertino</b>			<b>Quarry Tractor Shop - Building #2 - Area B</b>				Facility ID	<b>FA0200754</b>		
12100 Stevens Canyon Rd, Cupertino 95014							Status	<b>Submitted on 12/12/2017 12:31 PM</b>		
DOT Code/Fire Haz. Class	Common Name	Unit	Quantities			Annual Waste Amount	Federal Hazard Categories	Hazardous Components (For mixture only)		
			Max. Daily	Largest Cont.	Avg. Daily			Component Name	% Wt	EHS CAS No.
DOT: 3 - Flammable and Combustible Liquids  Combustible Liquid, Class III-B	<b>USED Motor Oil - Waste Oil</b>	<b>Gallons</b>	<b>570</b>	<b>570</b>	285	6792	- Fire	VARIOUS LUBRICATING BASE OILS	85 %	6474X-XX-X
	<u>CAS No</u>	<u>State</u>	<u>Storage Container</u>		<u>Pressue</u>	<u>Waste Code</u>		ADDITIVE PACKAGE, INCLUDING	15 %	MIXTURE
	Map: Figure 2 Grid: D6	Liquid	Aboveground Tank		Ambient	221		ZINC ALKYLDITHIOPHOSPHATE	2 %	68649-42-3
		<u>Type</u> Mixture			<u>Temperature</u> Ambient					
Combustible Liquid, Class III-B	<b>Ethylene Glycol - WASTE</b>	<b>Gallons</b>	<b>107</b>	<b>107</b>	53	210	- Acute Health - Chronic health			
	<u>CAS No</u>	<u>State</u>	<u>Storage Container</u>		<u>Pressue</u>	<u>Waste Code</u>				
	107-21-1	Liquid	Other		Ambient					
	Map: Figure 2 Grid: D6	<u>Type</u> Pure			<u>Temperature</u> Ambient					
	<b>WASTE SOLIDS - used drained Oil Filters</b>	<b>Gallons</b>	<b>165</b>	<b>55</b>	55	3000				
	<u>CAS No</u>	<u>State</u>	<u>Storage Container</u>		<u>Pressue</u>	<u>Waste Code</u>				
		Solid	Steel Drum		Ambient	223				
	Map: Figure 2 Grid: D6	<u>Type</u> Mixture			<u>Temperature</u> Ambient					

## Hazardous Materials And Wastes Inventory Matrix Report

CERS Business/Org.	<b>STEVENS CREEK QUARRY</b>	Chemical Location	CERS ID	<b>10588948</b>
Facility Name	<b>Stevens Creek Quarry - Cupertino</b>	<b>Quarry Tractor Shop -- Building #2 - Area B</b>	Facility ID	<b>FA0200754</b>
	12100 Stevens Canyon Rd, Cupertino 95014		Status	<b>Submitted</b> on 12/12/2017 12:31 PM

DOT Code/Fire Haz. Class	Common Name	Unit	Quantities			Annual Waste Amount	Federal Hazard Categories	Hazardous Components (For mixture only)		
			Max. Daily	Largest Cont.	Avg. Daily			Component Name	% Wt	EHS CAS No.
	<b>WASTE Solids - petroleum: absorbent pads, rags and Kitty Litter</b>	<b>Gallons</b>	<b>165</b>	<b>55</b>	165	4051				
		<u>State</u>	<u>Storage Container</u>		<u>Pressure</u>	<u>Waste Code</u>				
		Solid	Steel Drum		Ambient	223				
		<u>Type</u>			<u>Temperature</u>					
	<u>CAS No</u>	Mixture	Days on Site: 365		Ambient					
	Map: Figure 2 Grid: D6									

## Hazardous Materials And Wastes Inventory Matrix Report

CERS Business/Org.		STEVENS CREEK QUARRY				Chemical Location		CERS ID		10588948	
Facility Name		Stevens Creek Quarry - Cupertino				Quarry Tractor Shop - building #4		Facility ID		FA0200754	
		12100 Stevens Canyon Rd, Cupertino 95014						Status		Submitted on 12/12/2017 12:31 PM	
						Annual Waste	Federal Hazard	Hazardous Components			
						Amount	Categories	(For mixture only)			
DOT Code/Fire Haz. Class		Common Name		Unit	Quantities						
					Max. Daily	Largest Cont.	Avg. Daily		Component Name	% Wt	EHS CAS No.
		Drive Train Fluid HD SAE 10w-50w		Gallons	500	500	250	0			
		CAS No	State	Storage Container		Pressue	Waste Code				
			Liquid	Aboveground Tank		Ambient					
		Map: Figure 2	Grid: D5	Type			Temperature				
			Mixture	Days on Site: 365		Ambient					

## Hazardous Materials And Wastes Inventory Matrix Report

CERS Business/Org.	<b>STEVENS CREEK QUARRY</b>	Chemical Location	CERS ID	<b>10588948</b>
Facility Name	<b>Stevens Creek Quarry - Cupertino</b>	<b>Quarry Tractor Shop - Building #4</b>	Facility ID	<b>FA0200754</b>
	12100 Stevens Canyon Rd, Cupertino 95014		Status	<b>Submitted</b> on 12/12/2017 12:31 PM

DOT Code/Fire Haz. Class	Common Name	Unit	Quantities			Annual Waste Amount	Federal Hazard Categories	Hazardous Components (For mixture only)		
			Max. Daily	Largest Cont.	Avg. Daily			Component Name	% Wt	EHS CAS No.
	<b>Engine Oil</b>	<b>Gallons</b>	<b>500</b>	<b>500</b>	250	0	- Fire	Zinc Dithiophosphate	5 %	68649-42-3
	<u>CAS No</u>	<u>State</u>	<u>Storage Container</u>		<u>Pressue</u>	<u>Waste Code</u>				
		Liquid	Aboveground Tank, Tank Inside			Ambient				
	Map: Fig. 2 and	<u>Type</u>	Building			<u>Temperature</u>				
		Mixture	Days on Site: 365			Ambient				
	<b>Drive Train Fluid HD SAE 10w-50w</b>	<b>Gallons</b>	<b>500</b>	<b>500</b>	250	0				
	<u>CAS No</u>	<u>State</u>	<u>Storage Container</u>		<u>Pressue</u>	<u>Waste Code</u>				
	mixture,	Liquid	Aboveground Tank			Ambient				
	Map: Figure 2 Grid: D5	<u>Type</u>				<u>Temperature</u>				
		Mixture	Days on Site: 365			Ambient				

## Hazardous Materials And Wastes Inventory Matrix Report

CERS Business/Org.		STEVENS CREEK QUARRY				Chemical Location		CERS ID		10588948				
Facility Name		Stevens Creek Quarry - Cupertino				Quarry Tractor Shop - Building #5				Facility ID		FA0200754		
		12100 Stevens Canyon Rd, Cupertino 95014								Status		Submitted on 12/12/2017 12:31 PM		
						Annual Waste				Hazardous Components				
						Amount		Federal Hazard		(For mixture only)				
DOT Code/Fire Haz. Class		Common Name		Unit	Max. Daily	Largest Cont.	Avg. Daily		Categories	Component Name		% Wt	EHS	CAS No.
		Grease		Gallons	55	55	25	0		Molybdenum Disulfide 1-5		5 %		1317-33-5
		CAS No		State	Storage Container		Pressue	Waste Code		Phosphorodithoic Acid				??
		68511-50-2		Solid	Steel Drum		Ambient							
		Map: Figure 2		Type			Temperature							
		Grid: D5		Mixture	Days on Site: 365		Ambient							



## Hazardous Materials And Wastes Inventory Matrix Report

CERS Business/Org. STEVENS CREEK QUARRY		Chemical Location				CERS ID 10588948				
Facility Name Stevens Creek Quarry - Cupertino		Quarry Tractor Shop- Bldg. #5				Facility ID FA0200754				
12100 Stevens Canyon Rd, Cupertino 95014						Status Submitted on 12/12/2017 12:31 PM				
						Hazardous Components (For mixture only)				
DOT Code/Fire Haz. Class	Common Name	Unit	Quantities			Annual Waste Amount	Federal Hazard Categories			
			Max. Daily	Largest Cont.	Avg. Daily			Component Name	% Wt	EHS CAS No.
DOT: 3 - Flammable and Combustible Liquids	Mineral Spirits	Gallons	110	55	55	0	- Fire	Mineral Spirits	100 %	64475-85-0
	CAS No	State	Storage Container		Pressue	Waste Code				
	64475-85-0	Liquid	Steel Drum		Ambient					
	Map: Fig. 2 and 7c	Type			Temperature					
	Grid: 5D	Mixture	Days on Site: 365		Ambient					

## Hazardous Materials And Wastes Inventory Matrix Report

CERS Business/Org.		STEVENS CREEK QUARRY				Chemical Location		CERS ID	10588948	
Facility Name		Stevens Creek Quarry - Cupertino				Quarry TRactor Shop- Building #5		Facility ID	FA0200754	
		12100 Stevens Canyon Rd, Cupertino 95014						Status	Submitted on 12/12/2017 12:31 PM	
						Annual Waste	Federal Hazard	Hazardous Components		
						Amount	Categories	(For mixture only)		
DOT Code/Fire Haz. Class		Common Name	Unit	Max. Daily	Largest Cont.	Avg. Daily		Component Name	% Wt	EHS CAS No.
		Industrial Oil	Gallons	55	55	25	0	Highly refined mineral oils	100 %	various
		CAS No	State	Storage Container		Pressue	Waste Code			
			Liquid	Steel Drum		Ambient				
		Map: Fig. 2	Grid: d5			Temperature				
			Type			Ambient				
			Mixture	Days on Site: 365						

## Hazardous Materials And Wastes Inventory Matrix Report

CERS Business/Org. <b>STEVENS CREEK QUARRY</b>			Chemical Location			CERS ID	<b>10588948</b>		
Facility Name <b>Stevens Creek Quarry - Cupertino</b>			<b>Quarry Truck Shop - Building #2</b>			Facility ID	<b>FA0200754</b>		
12100 Stevens Canyon Rd, Cupertino 95014						Status	<b>Submitted on 12/12/2017 12:31 PM</b>		
DOT Code/Fire Haz. Class	Common Name	Unit	Quantities			Annual Waste Amount	Federal Hazard Categories	Hazardous Components (For mixture only)	
			Max. Daily	Largest Cont.	Avg. Daily			Component Name	% Wt EHS CAS No.
DOT: 2.1 - Flammable Gases	<b>Acetylene</b>	<b>Cu. Feet</b>	<b>300</b>	<b>300</b>		0	- Fire		
Unstable (Reactive), Class 2, Flammable Gas	CAS No 74-86-2 Map: Fig. 2 and 7a Grid: 6D	State Gas Type Pure	Storage Container Cylinder		Pressue > Ambient Temperature Ambient	Waste Code	- Reactive - Pressure Release - Acute Health		
DOT: 2.2 - Nonflammable Gases	<b>Nitrogen</b>	<b>Cu. Feet</b>	<b>373</b>	<b>230</b>		0	- Pressure Release		
	CAS No 7727-37-9 Grid: D6	State Gas Type Pure	Storage Container Cylinder		Pressue > Ambient Temperature Ambient	Waste Code			
DOT: 2.2 - Nonflammable Gases	<b>Oxygen</b>	<b>Cu. Feet</b>	<b>251</b>	<b>251</b>		0	- Fire - Pressure Release	Oxygen	100 % 7782-44-7
	CAS No 7782-44-7 Map: Fig. 2 and 7a Grid: D6	State Gas Type Pure	Storage Container Cylinder		Pressue > Ambient Temperature Ambient	Waste Code			

## Hazardous Materials And Wastes Inventory Matrix Report

CERS Business/Org.	STEVENS CREEK QUARRY				Chemical Location		CERS ID	10588948		
Facility Name	Stevens Creek Quarry - Cupertino				Recycling Center		Facility ID	FA0200754		
	12100 Stevens Canyon Rd, Cupertino 95014						Status	Submitted on 12/12/2017 12:31 PM		
								Hazardous Components (For mixture only)		
DOT Code/Fire Haz. Class	Common Name	Unit	Quantities			Annual Waste Amount	Federal Hazard Categories	Component Name		
			Max. Daily	Largest Cont.	Avg. Daily			% Wt	EHS	CAS No.
DOT: 3 - Flammable and Combustible Liquids	Diesel Fuel No. 2	Gallons	50	50	25	0	- Fire - Acute Health			
	CAS No	State	Storage Container		Pressue					
	68476-34-6	Liquid	Other		Ambient	Waste Code				
Combustible Liquid, Class II	Map: Figure 2    Grid: F6	Type			Temperature					
		Pure	Days on Site: 365		Ambient					

## Hazardous Materials And Wastes Inventory Matrix Report

CERS Business/Org.	STEVENS CREEK QUARRY				Chemical Location		CERS ID	10588948		
Facility Name	Stevens Creek Quarry - Cupertino				RVT yard		Facility ID	FA0200754		
	12100 Stevens Canyon Rd, Cupertino 95014						Status	Submitted on 12/12/2017 12:31 PM		
						Annual Waste	Hazardous Components			
						Amount	Federal Hazard	(For mixture only)		
DOT Code/Fire Haz. Class	Common Name	Unit	Quantities				Categories	Component Name	% Wt	EHS CAS No.
	Anionic Polymer	Gallons	250	250	250	0	- Chronic health			
	CAS No	State	Storage Container		Pressue	Waste Code				
		Liquid	Tote Bin		Ambient					
	Map: Fi	Type			Temperature					
	Grid: D5		Days on Site: 365		Ambient					

## Hazardous Materials And Wastes Inventory Matrix Report

CERS Business/Org. <b>STEVENS CREEK QUARRY</b>		Chemical Location				CERS ID	<b>10588948</b>				
Facility Name <b>Stevens Creek Quarry - Cupertino</b>		<b>Upper Quarry Floor -</b>				Facility ID	<b>FA0200754</b>				
12100 Stevens Canyon Rd, Cupertino 95014						Status	<b>Submitted</b> on 12/12/2017 12:31 PM				
						Annual Waste	Hazardous Components				
						Amount	(For mixture only)				
DOT Code/Fire Haz. Class		Common Name	Unit	Quantities		Federal Hazard	Component Name			EHS CAS No.	
			Max. Daily	Largest Cont.	Avg. Daily	Categories					
		<b>Liquifloc Polymer</b>	<b>Gallons</b>	<b>250</b>	<b>250</b>	0	<b>- Chronic health</b>				
		<u>CAS No</u>	<u>State</u>	<u>Storage Container</u>		<u>Pressue</u>	<u>Waste Code</u>				
			Liquid	Tote Bin		Ambient					
		Map: Figure 2    Grid: B3	<u>Type</u>			<u>Temperature</u>					
			Mixture	Days on Site: 365		Ambient					

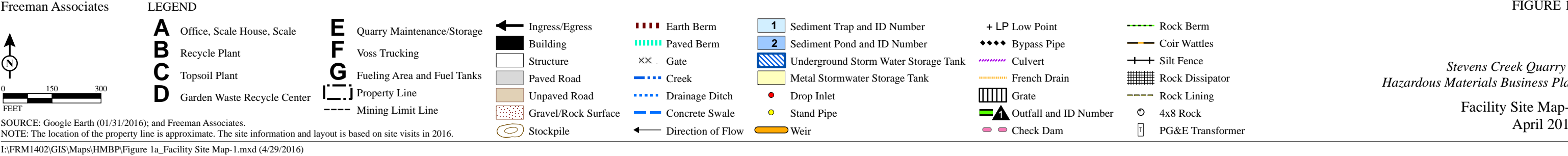
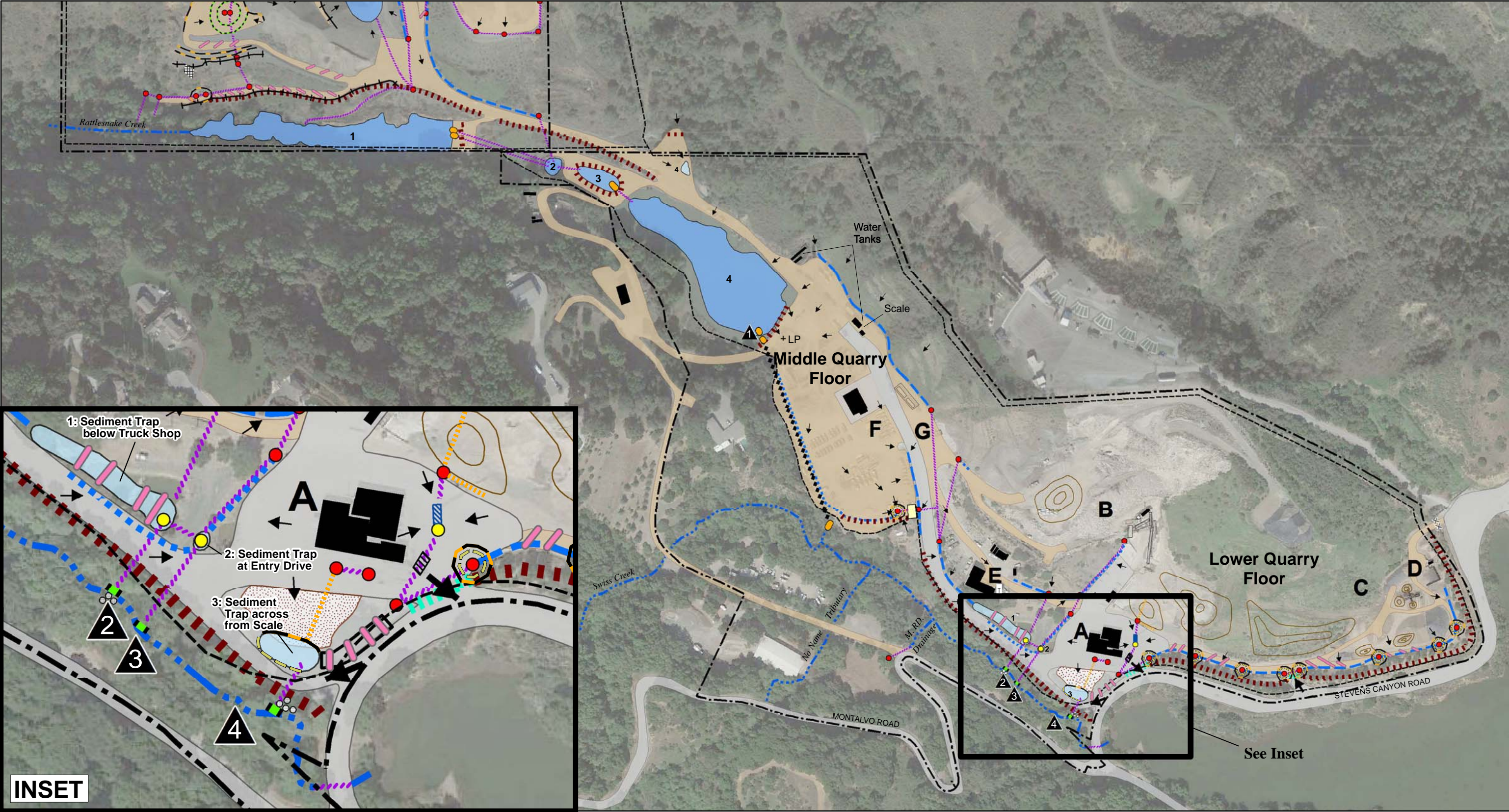
## Hazardous Materials And Wastes Inventory Matrix Report

CERS Business/Org.		STEVENS CREEK QUARRY				Chemical Location		CERS ID	10588948	
Facility Name		Stevens Creek Quarry - Cupertino				Upper Quarry Floor - Rock Plant		Facility ID	FA0200754	
		12100 Stevens Canyon Rd, Cupertino 95014						Status	Submitted on 12/12/2017 12:31 PM	
						Annual Waste Amount	Federal Hazard Categories	Hazardous Components (For mixture only)		
DOT Code/Fire Haz. Class	Common Name	Unit	Max. Daily	Largest Cont.	Avg. Daily			Component Name	% Wt	EHS CAS No.
	Quick Lime	Pounds	67	67	30	0				
	CAS No	State	Storage Container		Pressue	Waste Code				
	1305-78-8	Solid	Silo		Ambient					
	Map: Figure 2 Grid: B2	Type			Temperature					
		Mixture	Days on Site: 365		Ambient					

## Hazardous Materials And Wastes Inventory Matrix Report

CERS Business/Org. <b>STEVENS CREEK QUARRY</b>		Chemical Location				CERS ID	<b>10588948</b>			
Facility Name <b>Stevens Creek Quarry - Cupertino</b>		<b>Upper Quarry Floor - Sand Plant</b>				Facility ID	<b>FA0200754</b>			
12100 Stevens Canyon Rd, Cupertino 95014						Status	<b>Submitted</b> on 12/12/2017 12:31 PM			
								Hazardous Components (For mixture only)		
DOT Code/Fire Haz. Class	Common Name	Unit	Quantities			Annual Waste Amount	Federal Hazard Categories	Component Name	% Wt	EHS CAS No.
DOT: 8 - Corrosives (Liquids and Solids)  Corrosive	<b>Calcium Hydroxide w/ Magnesium Hydroxide, Crystalline Silica, &amp; Sodium Hydroxide</b>  CAS No 1305-62-0, etc Map: Figure 2   Grid: B3	<b>Gallons</b>	<b>6107</b>	<b>6107</b>	3000	0				
		<u>State</u>	<u>Storage Container</u>			<u>Pressue</u>				
		Solid	Aboveground Tank			Ambient	<u>Waste Code</u>			
		<u>Type</u>				<u>Temperature</u>				
		Mixture	Days on Site: 365			Ambient				

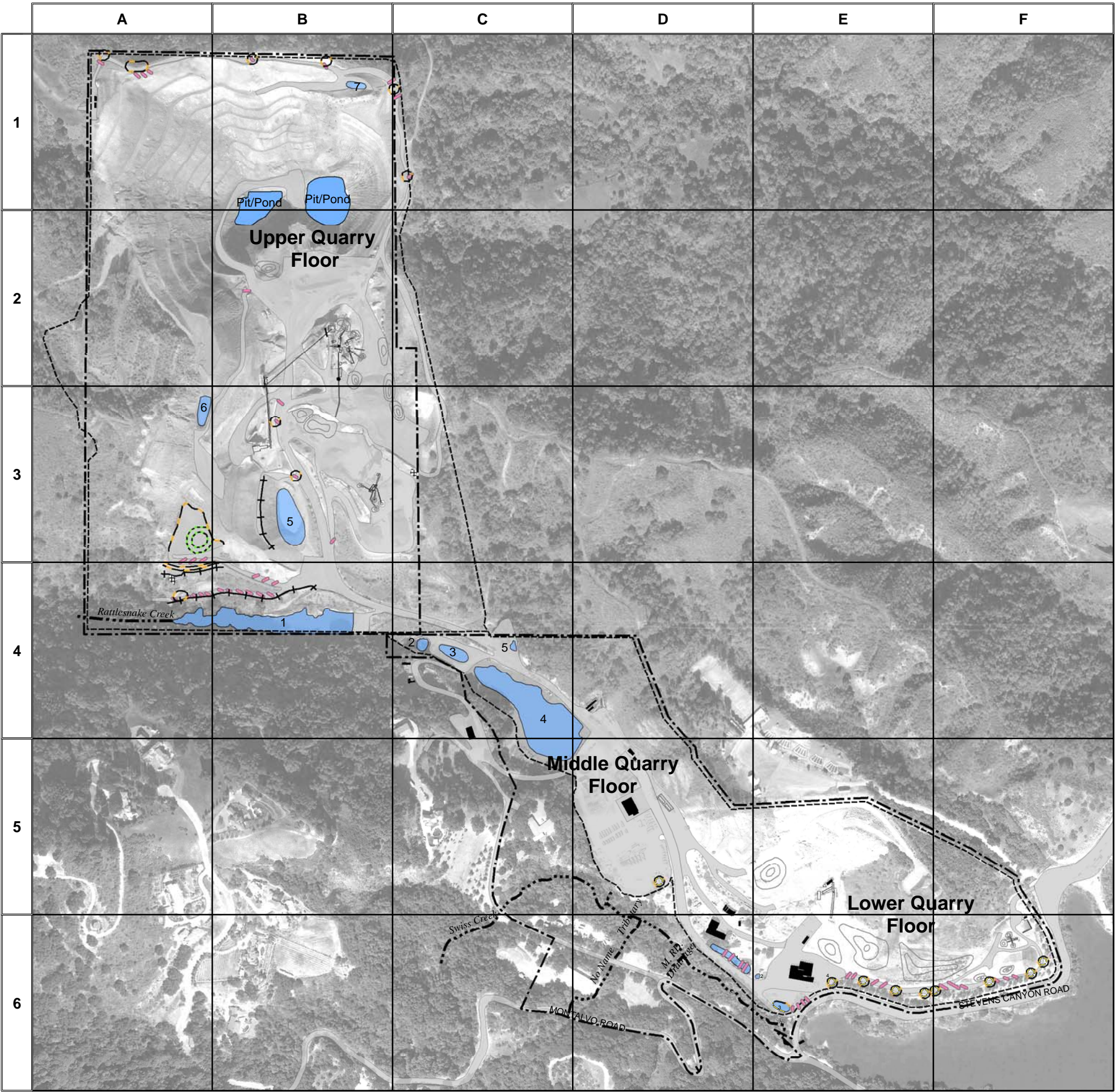












Freeman Associates

0 250 500  
FEET

**LEGEND**

**B2/3** - Rock Plant

**B3** - Sand Plant

**D5** - Voss Trucking and Fueling Station

**D5** - Quarry Tractor Shop - Buildings #4 and #5

**D6** - Quarry Tractor Shop - Buildings #1 and #2

**E5** - Recycle Plant

**E6** - Office

**F6** - Garden Center

Property Line

Mining Limit Line

Ponds and Sediment Trap

Roads

Stockpile

Check Dam

Rock Berm

Coir Wattles

Silt Fence

Rock Dissipator

Rock Lining

4x8 Rock

**Stevens Creek Quarry - Hazardous Materials Business Plan**

**Facility Wide Grid Location Map**

**April 2016**

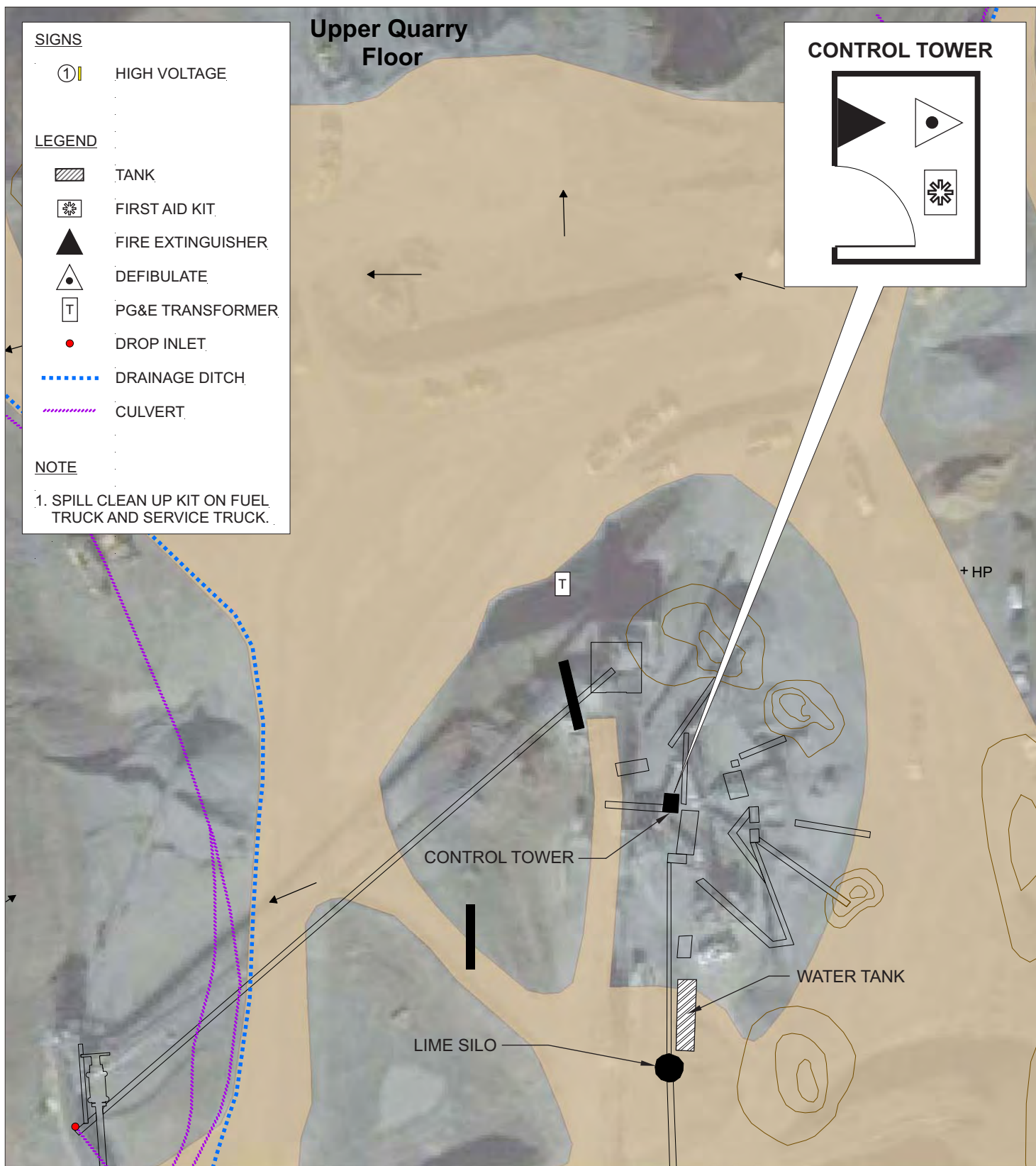
SOURCE: USDA NAIP (01/31/2016); and Freeman Associates.

NOTES: Refer to Table 4 in Section 7.0. The location of property line is approximate. The site information and layout is based on site visits in 2016.

Sediment Trap names are: 6: Sediment Trap above Rattlesnake Creek; and 7: Sediment Trap by pit and rock plant.

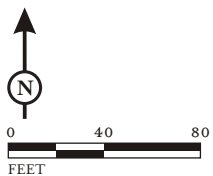
I:\FRM1402\GIS\Maps\HMBP\Figure 2\_Facility Wide Grid Location Map.mxd (4/26/2016)





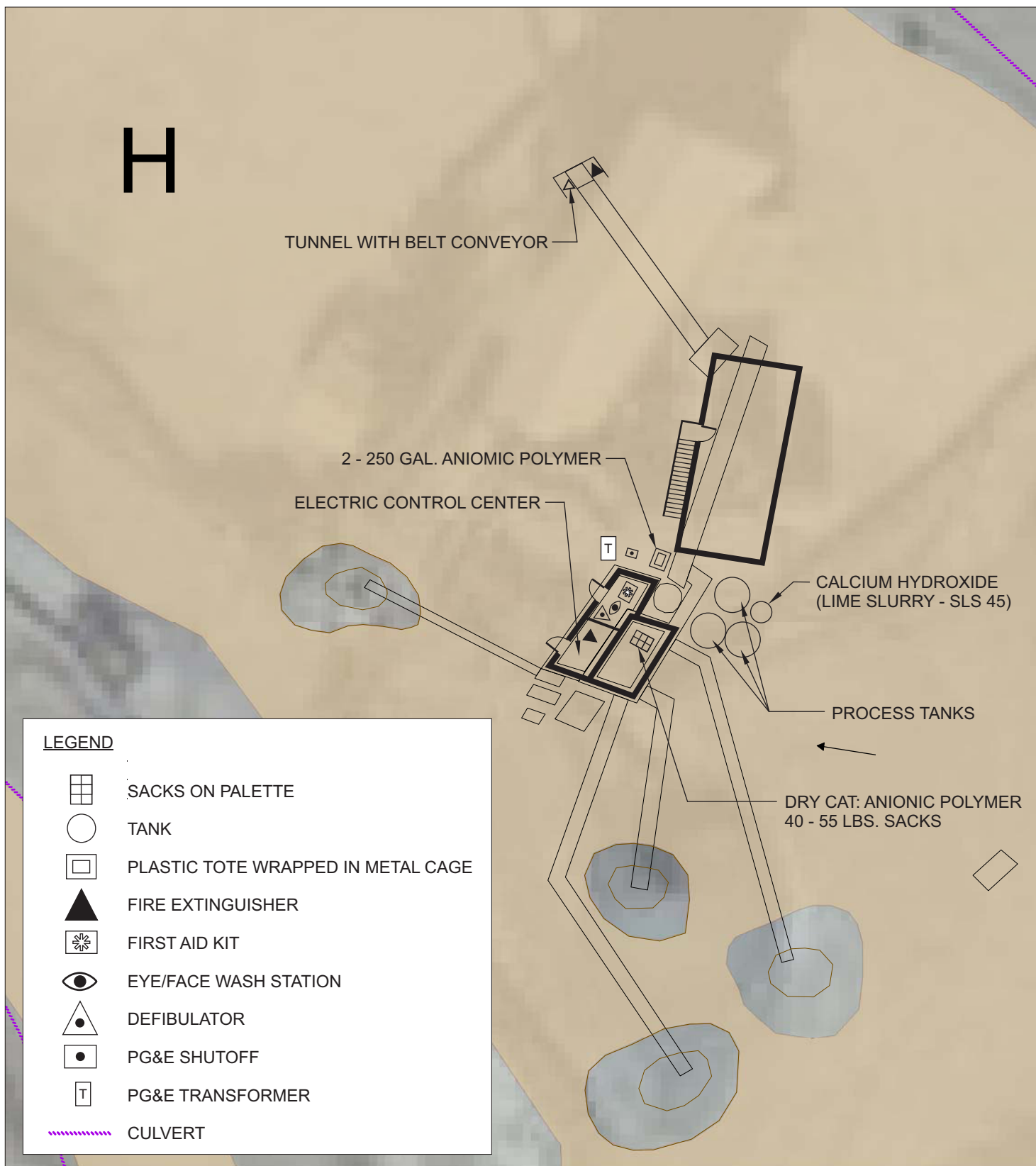
Freeman Associates

FIGURE 3



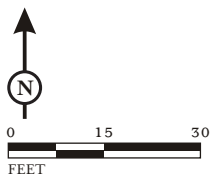
*Stevens Creek Quarry -  
Hazardous Materials Business Plan*

**Rock Plant**  
April 2016



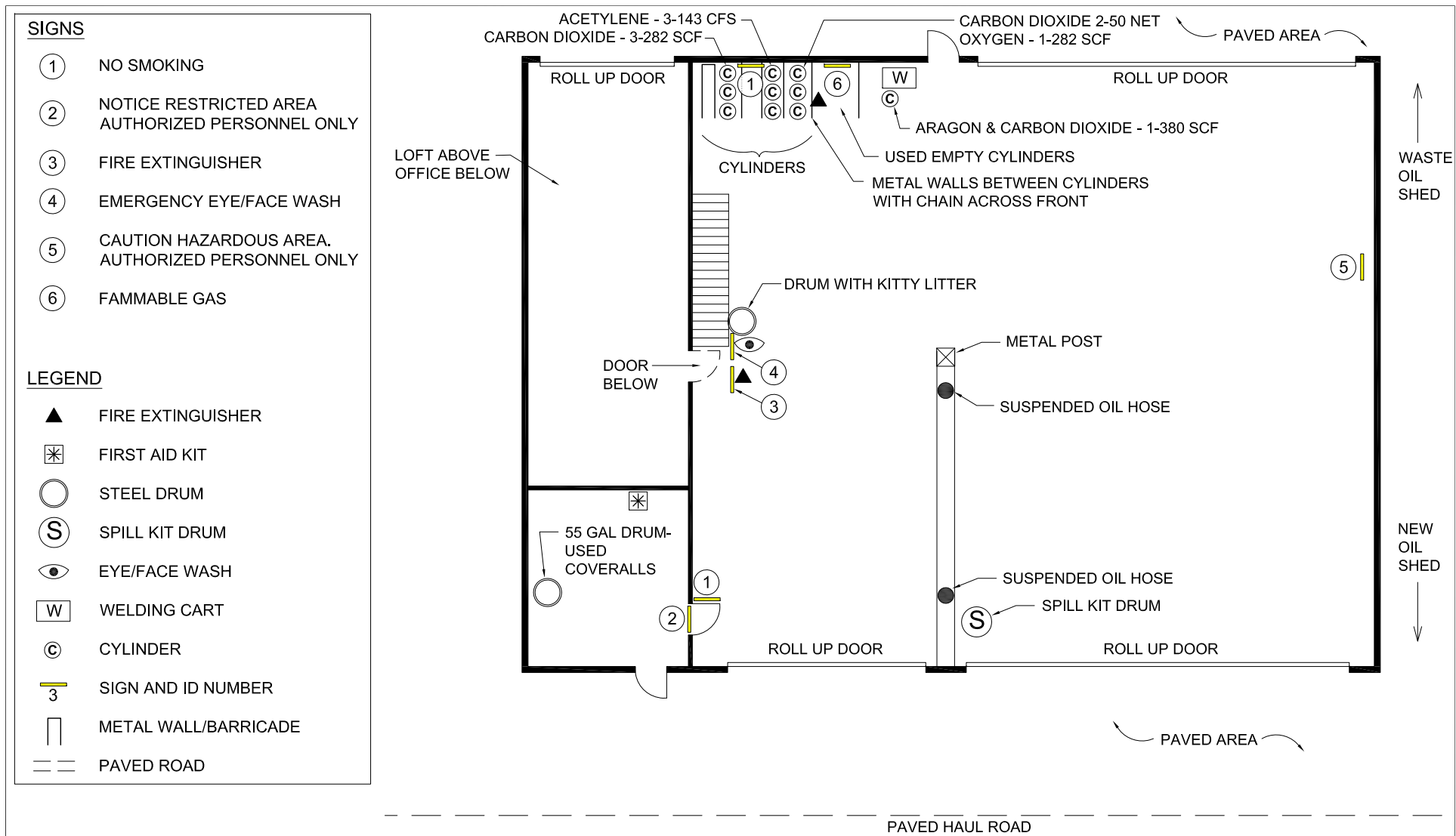
Freeman Associates

FIGURE 4



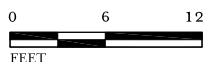
*Stevens Creek Quarry -  
Hazardous Materials Business Plan*

**Sand Plant  
April 2016**



Freeman Associates

FIGURE 5a



*Stevens Creek Quarry -  
Hazardous Materials Business Plan*

**RVT Shop - Truck Maintenance**

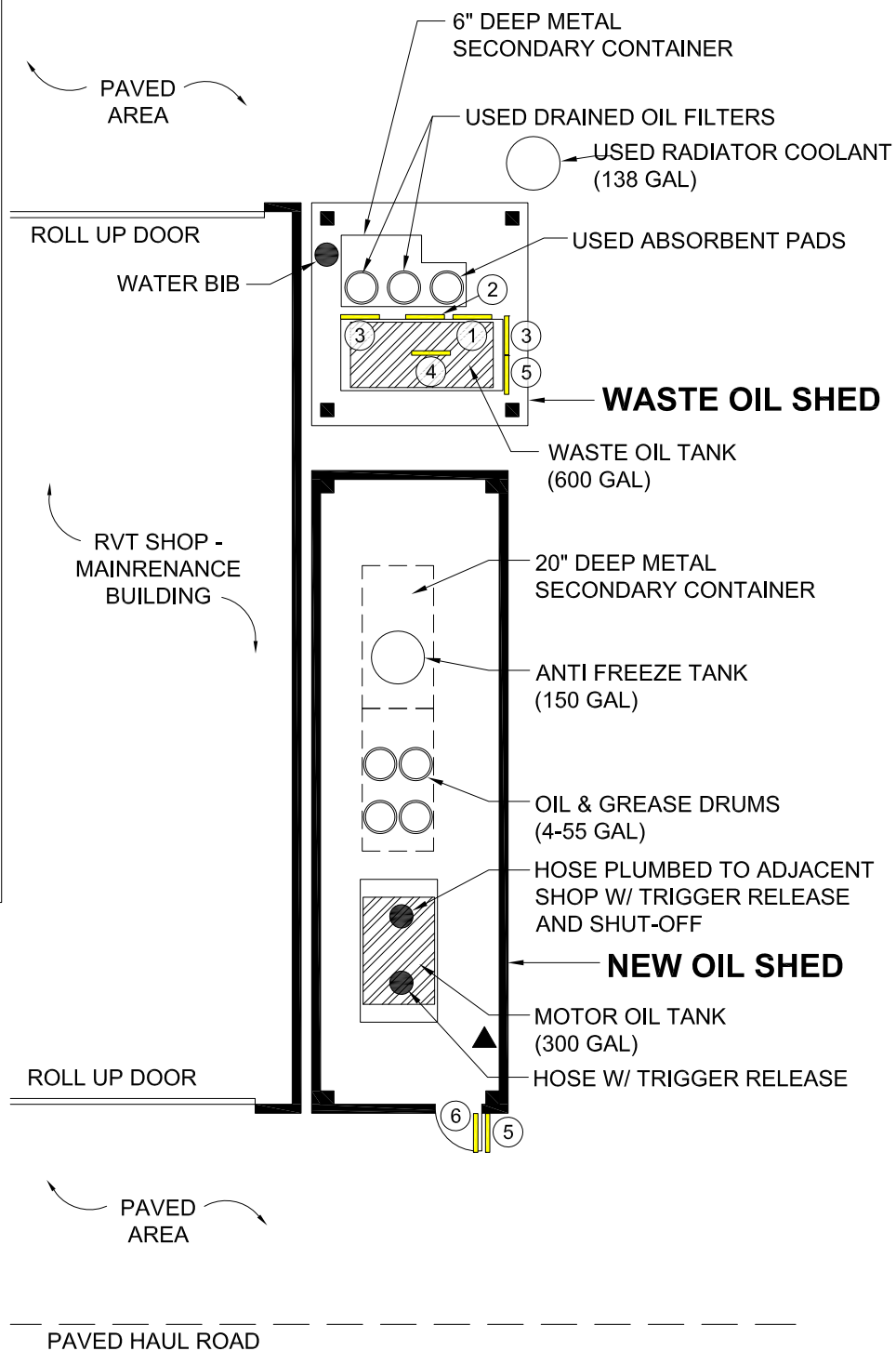
April 2016

## SIGNS

- ① WASTE OIL
- ② NO SMOKING OR OPEN FLAMES PERMITTED WITHIN 10'
- ③ COMBUSTIBLE
- ④ USED OIL ONLY
- ⑤ HAZARDOUS MATERIAL PLACARD
- ⑥ NO SMOKING

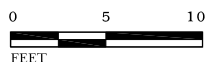
## LEGEND

- METAL BOX SECONDARY CONTAINER WITH GRATE ON TOP
- METAL BOX SECONDARY CONTAINER
- TANK
- STEEL DRUM
- DOUBLE WALLED PLASTIC TANK
- 3 SIGN AND ID NUMBER
- HOSE WITH TRIGGER RELEASE
- FIRE EXTINGUISHER
- PAVED ROAD



Freeman Associates

FIGURE 5b



Stevens Creek Quarry -  
Hazardous Materials Business Plan

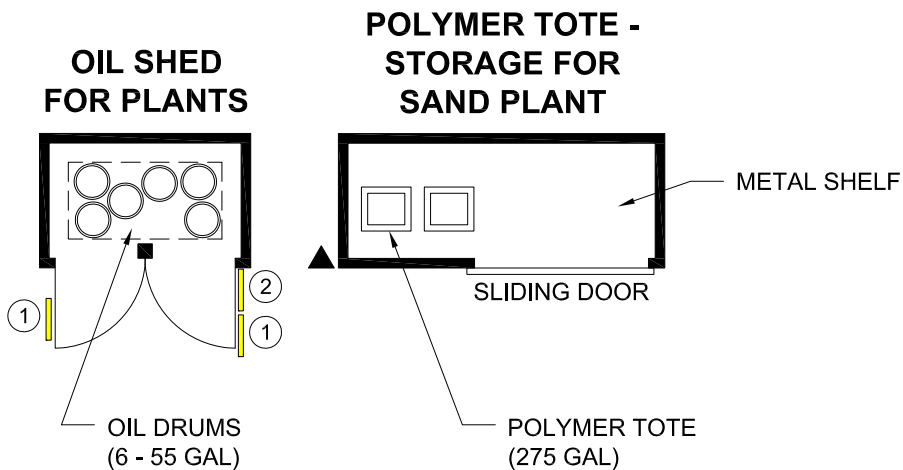
RVT Shop - New Oil and Waste Oil Sheds  
April 2016

## SIGNS

- ① - CAUTION NO SMOKING OR  
OPEN FLAMES  
- CUIDADO NO FUMAR O  
ENCENDER ???
- ② HAZARDOUS MATERIAL PLACARD

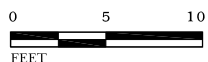
## LEGEND

- 20" DEEP CONTAINER WITH  
METAL GRATE ON TOP
- STEEL DRUM
- PLASTIC TOTE WRAPPED WITH  
METAL CAGE
- MNEMONIC OIL PUMP
- 1 SIGN AND ID NUMBER
- ▲ FIRE EXTINGUISHER



Freeman Associates

FIGURE 5c



*Stevens Creek Quarry -  
Hazardous Materials Business Plan*


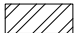
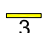






RVT Shop - Plant Maintenance Sheds  
April 2016

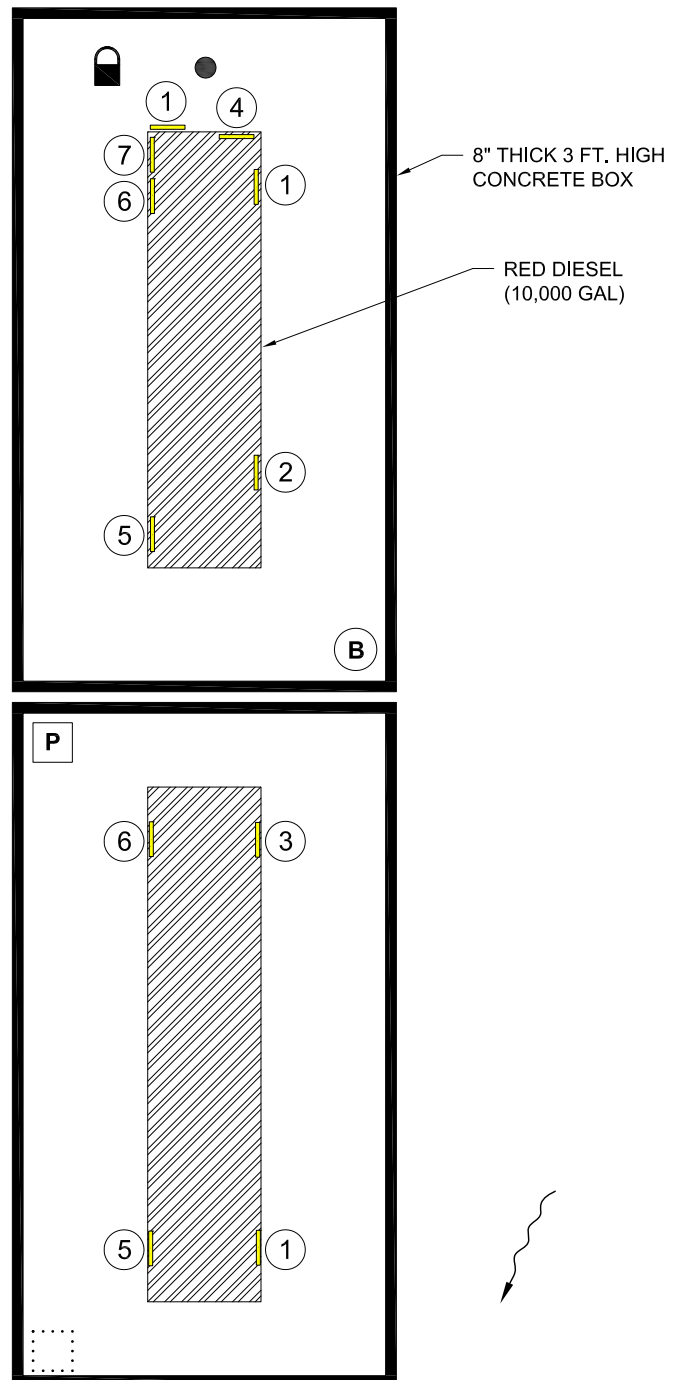


## SIGNS

- ① FLAMMABLE
- ② RED DIESEL FUEL - 10,000 GAL
- ③ 12,000 GAL - DIESEL FUEL
- ④ DIESEL FUEL
- ⑤ FLAMMABLE NO SMOKING OR OPEN FLAME WITHIN 10'
- ⑥ DIESEL FUEL - NO SMOKING OR OPEN FLAME WITHIN 10'
- ⑦ EMERGENCY SHUTDOWN

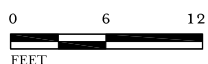
## LEGEND

-  CONCRETE SECONDARY CONTAINER
-  TANK
-  SIGN AND ID NUMBER
-  BUCKET
-  FUEL HOSE W/AUTO SHUT-OFF
-  BOLT TO SECURE ELECTRIC PUMP
-  PUMP
-  SUMP
-  DIRECTION OF SURFACE WATER RUNOFF



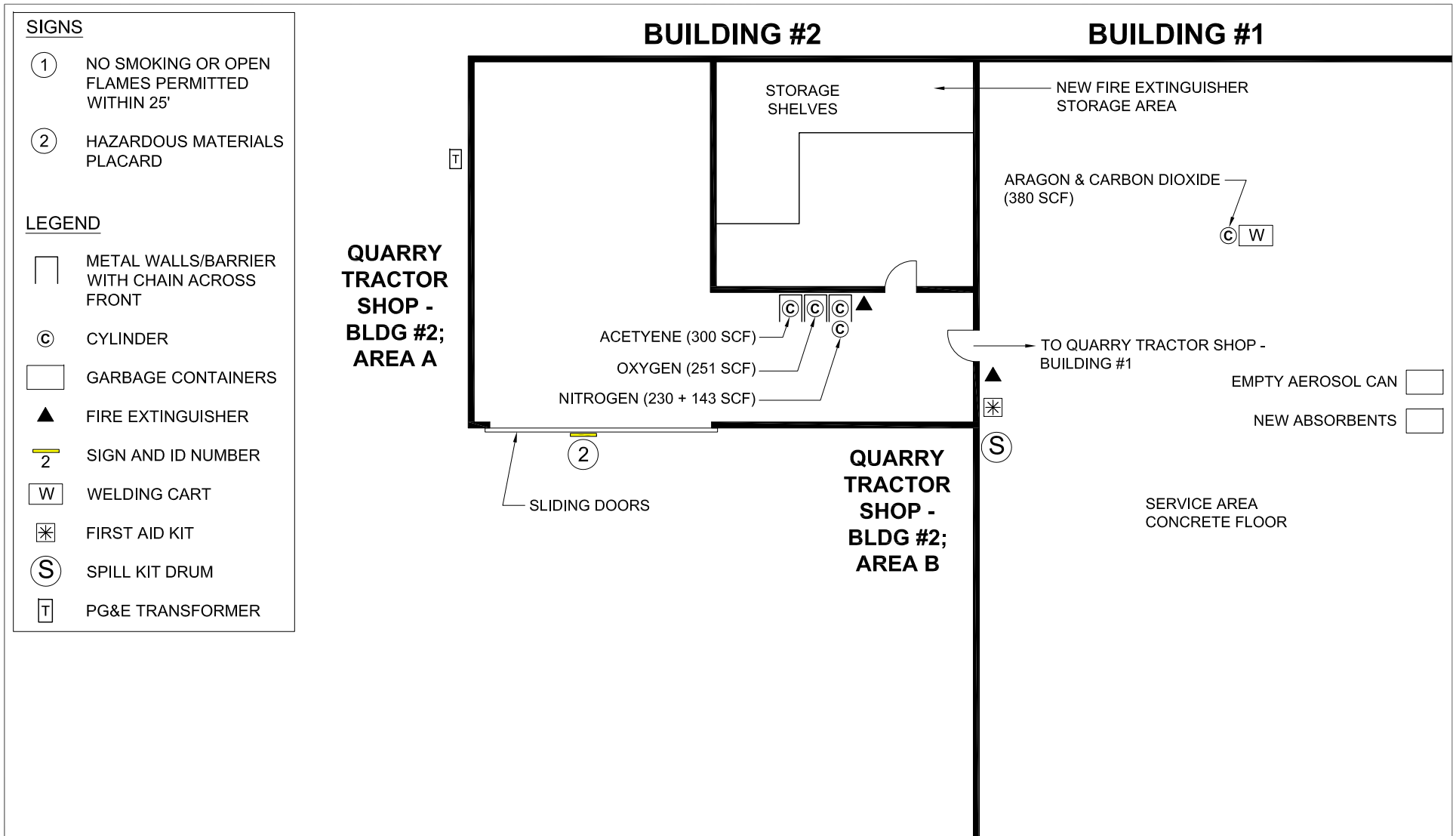
Freeman Associates

FIGURE 6



Stevens Creek Quarry -  
Hazardous Materials Business Plan

RVT Shop - Fueling Station  
April 2016



Freeman Associates

FIGURE 7a



*Stevens Creek Quarry -  
Hazardous Materials Business Plan*

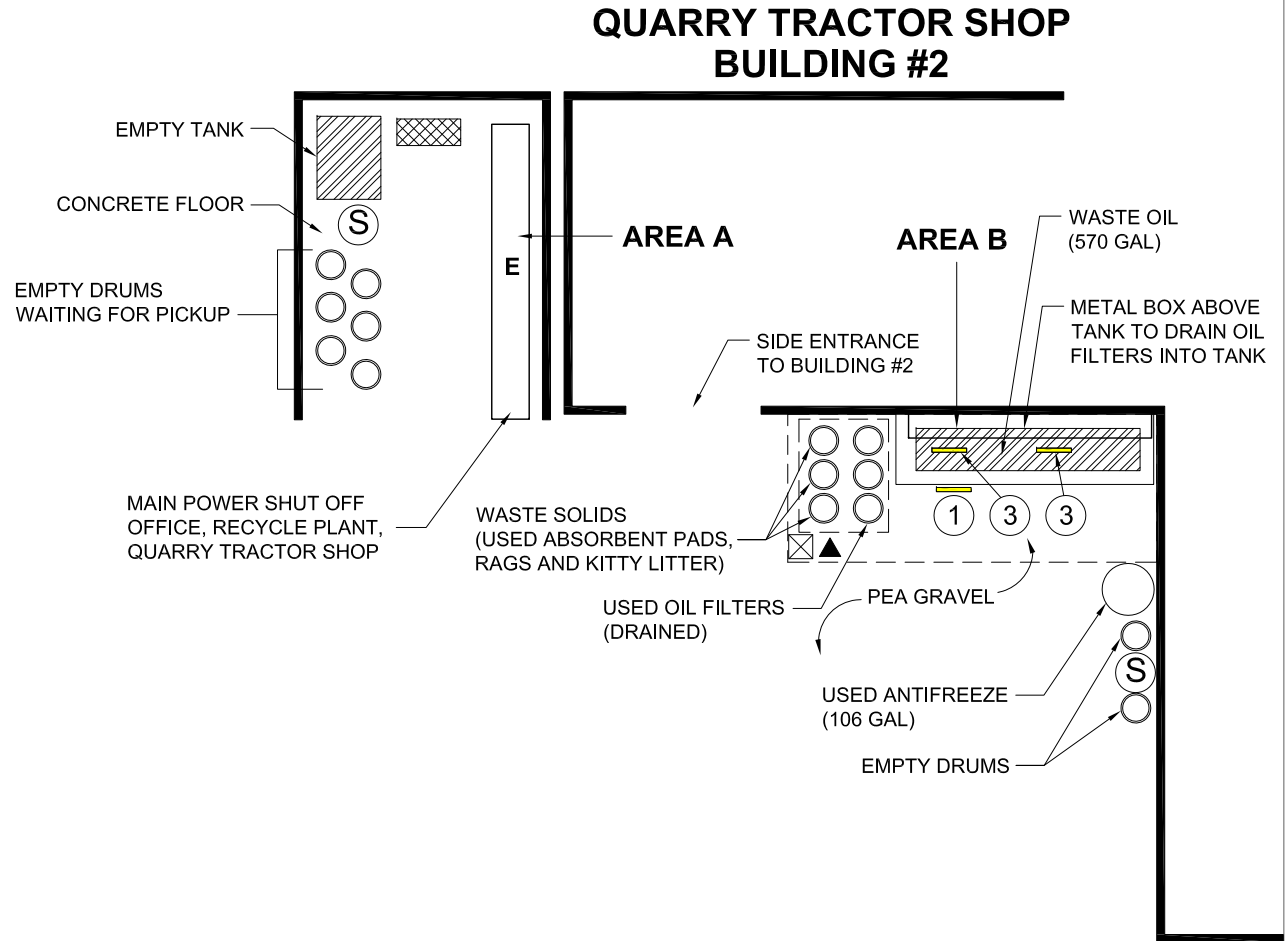
Quarry Tractor Shop - Buildings #1 and #2  
April 2016

## SIGNS

- ① NO SMOKING OR OPEN FLAMES PERMITTED WITHIN 10'
- ② COMBUSTIBLE
- ③ FIRE EXTINGUISHER
- ④ USED OIL ONLY

## LEGEND

- [ ] 6" DEEP METAL BOX WITH GRATE ON TOP
- [ ] TANK
- STEEL DRUM
- DOUBLE WALLED PLASTIC TANK
- (S) SPILL CLEAN-UP KIT
- ▲ FIRE EXTINGUISHER
- 3 SIGN AND ID NUMBER
- ⊠ POST
- [ ] COMPRESSOR (ELECTRIC)



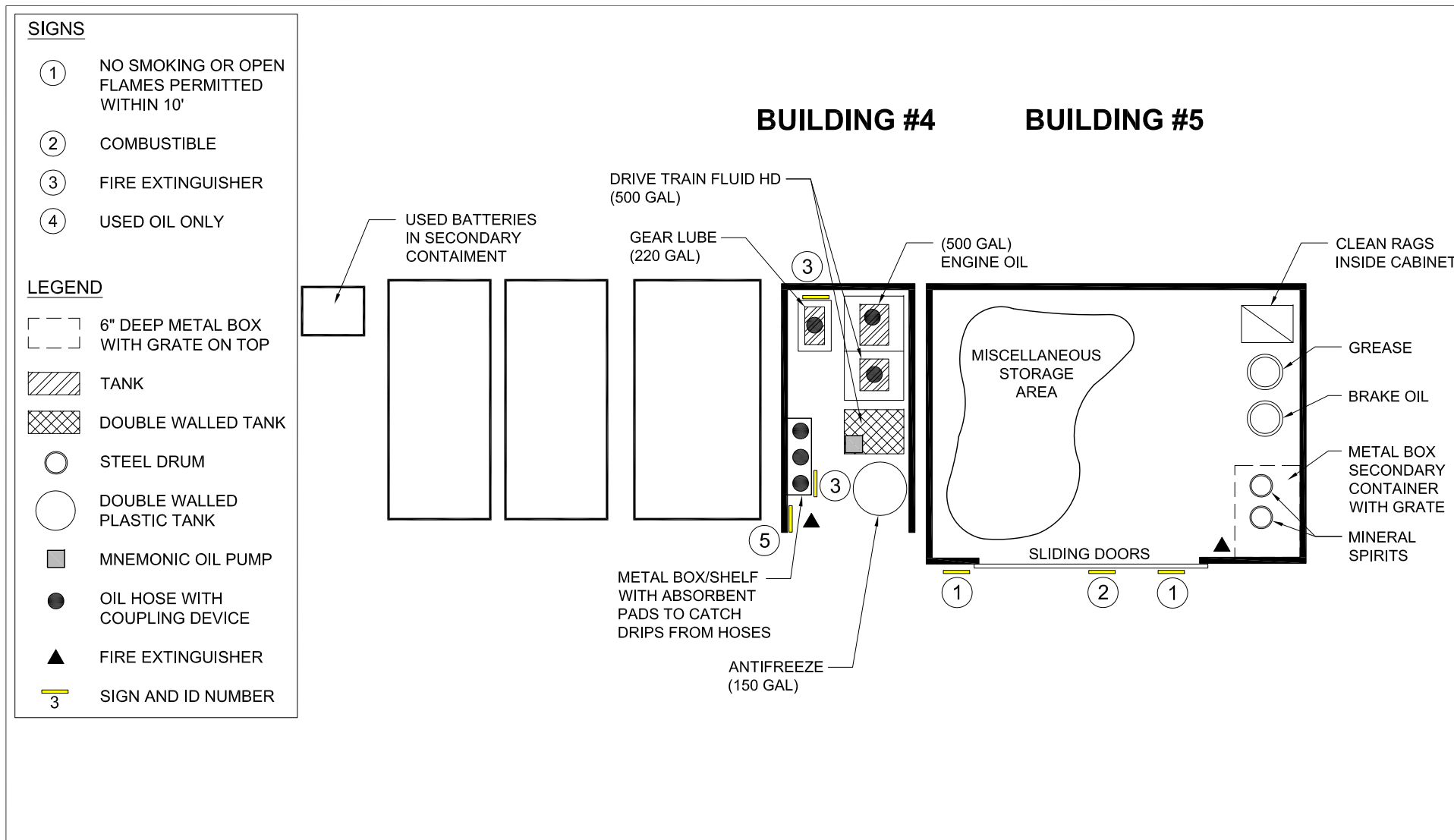
Freeman Associates

FIGURE 7b



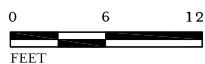
*Stevens Creek Quarry -  
Hazardous Materials Business Plan*

Quarry Tractor Shop - Building #1 - Areas A and B  
April 2016



Freeman Associates

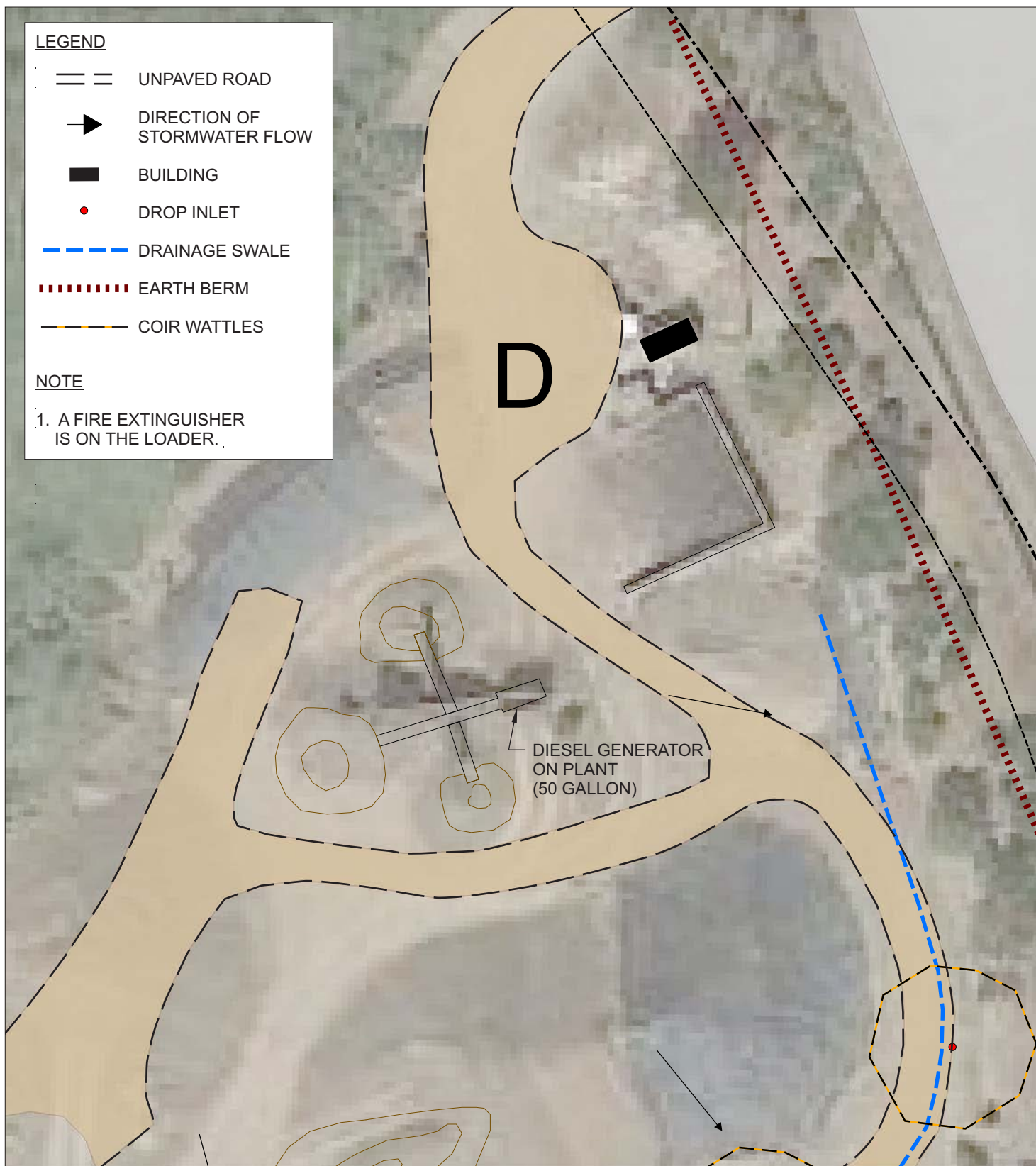
FIGURE 7c



*Stevens Creek Quarry -  
Hazardous Materials Business Plan*

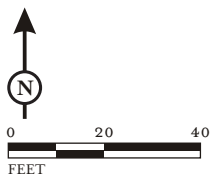
Quarry Tractor Shop - Buildings #4 and #5

April 2016

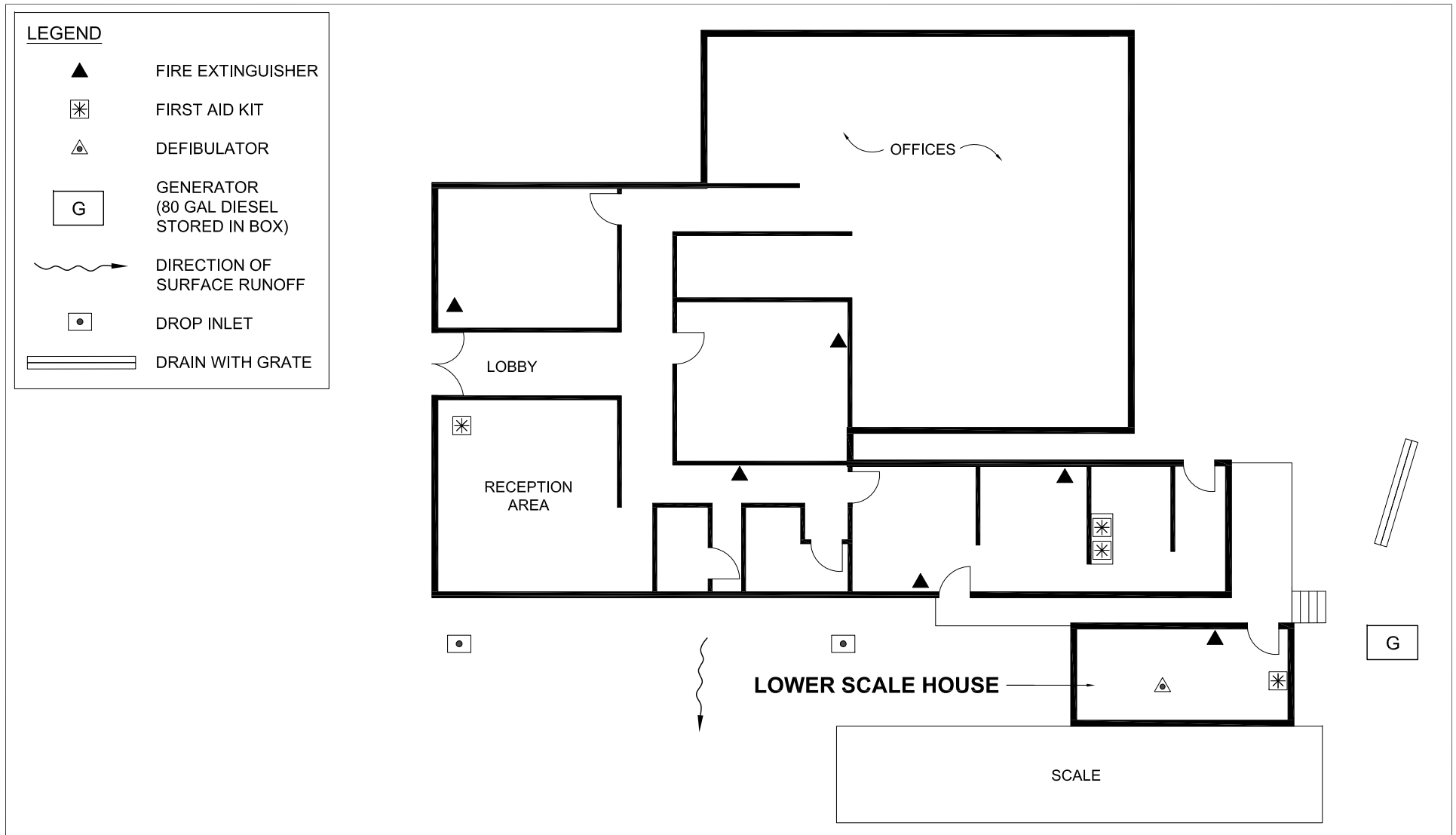


Freeman Associates

FIGURE 8



*Stevens Creek Quarry -  
Hazardous Materials Business Plan*  
Garden Center  
April 2016



Freeman Associates

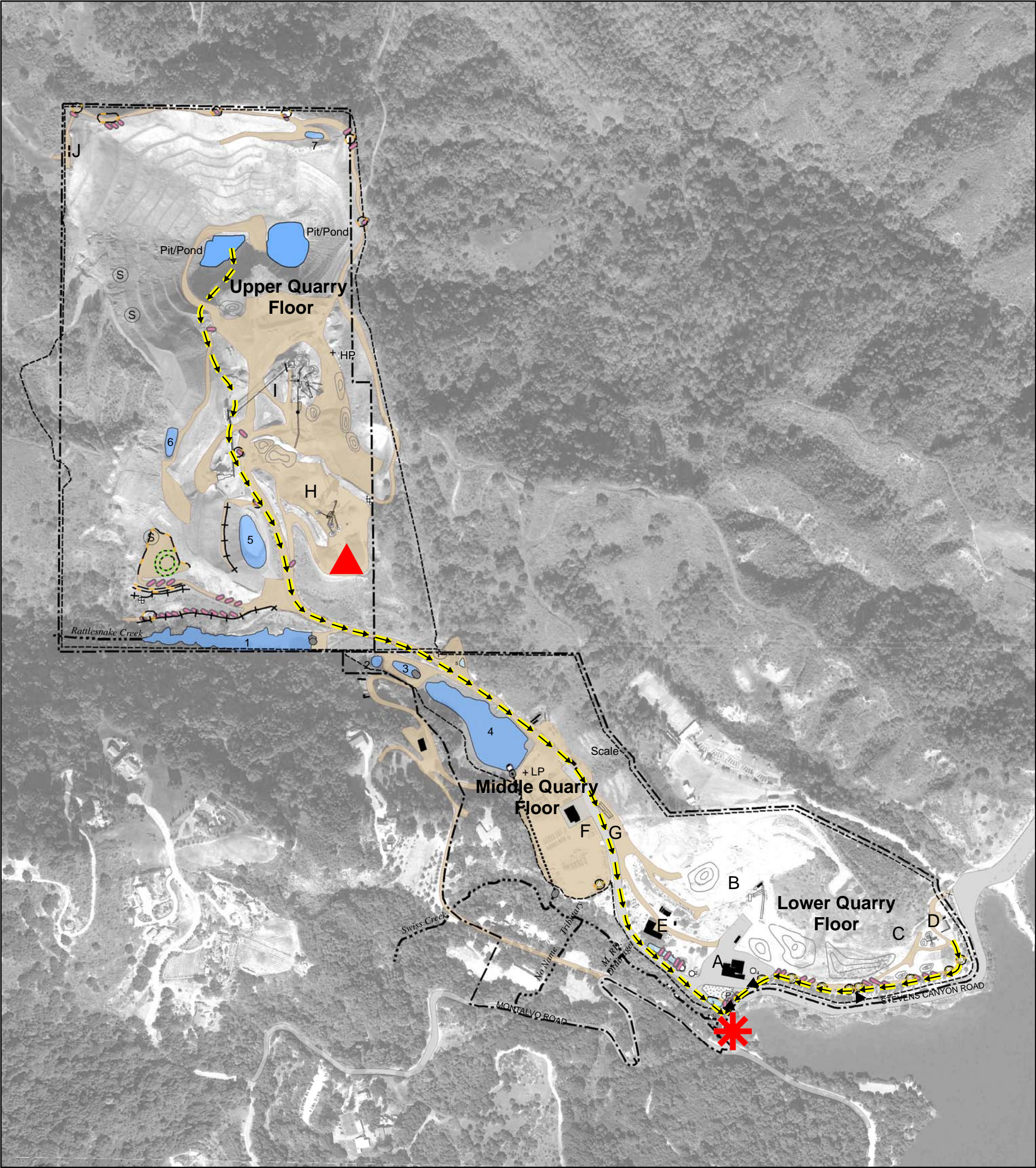
FIGURE 9



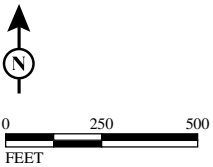
*Stevens Creek Quarry -  
Hazardous Materials Business Plan*

Office and Scale House  
April 2016





Freeman Associates



LEGEND

- Assembly Area
- Alternative Assembly Area
- Emergency Exit Route and Assembly Area

- A** Office, Scale House, Scale
- B** Recycle Plant
- C** Topsoil Plant
- D** Garden Waste Recycle Center
- E** Quarry Maintenance/Storage
- F** Voss Trucking
- G** Fueling Area and Fuel Tanks
- H** Sand Plant
- I** Rock Plant
- J** Radio Tower

- Property Line
- Mining Limit Line
- Ingress/Egress
- Building
- Structure
- Unpaved Road
- Stockpile

- Pond
- Check Dam
- Rock Berm
- Coir Wattles
- Silt Fence
- Rock Dissipator
- Rock Lining
- 4x8 Rock

SOURCE: The location of property line is approximate. The site information and layout is based on site visits in 2016.  
I:\FRM1402\GIS\Maps\HMBP\Figure 10\_Emergency Route and Assembly Area.mxd (4/26/2016)

FIGURE 10

Stevens Creek Quarry -  
Hazardous Materials Business Plan  
Emergency Route and  
Assembly Area  
April 2016



# CALIFORNIA ENVIRONMENTAL REPORTING SYSTEM (CERS) CONSOLIDATED EMERGENCY RESPONSE / CONTINGENCY PLAN

*Prior to completing this Plan, please refer to the INSTRUCTIONS FOR COMPLETING A CONSOLIDATED CONTINGENCY PLAN*

## A. FACILITY IDENTIFICATION AND OPERATIONS OVERVIEW

FACILITY ID # <b>FA 0200756</b>	1. CERS ID <b>10588948</b>	A1. DATE OF PLAN PREPARATION/REVISION <b>4/29/2016</b>	A2.
BUSINESS NAME (Same as Facility Name or DBA - Doing Business As) <b>STEVENS CREEK QUARRY</b>			3.
BUSINESS SITE ADDRESS <b>12100 STEVENS CANYON ROAD</b>			103.
BUSINESS SITE CITY <b>CUPERTINO</b>	104.	CA	105. ZIP CODE <b>94015</b>
TYPE OF BUSINESS (e.g., Painting Contractor) <b>AGGREGATE MINING</b>		A3. INCIDENTAL OPERATIONS (e.g., Fleet Maintenance) <b>RV TRUCKING</b>	A4.
THIS PLAN COVERS CHEMICAL SPILLS, FIRES, AND EARTHQUAKES INVOLVING: (Check all that apply)			A5.
<input checked="" type="checkbox"/> 1. HAZARDOUS MATERIALS; <input checked="" type="checkbox"/> 2. HAZARDOUS WASTES			

## B. INTERNAL RESPONSE

INTERNAL FACILITY EMERGENCY RESPONSE WILL OCCUR VIA: (Check all that apply)	B1.
<input checked="" type="checkbox"/> 1. CALLING PUBLIC EMERGENCY RESPONDERS (i.e., 9-1-1)	
<input checked="" type="checkbox"/> 2. CALLING HAZARDOUS WASTE CONTRACTOR	
<input checked="" type="checkbox"/> 3. ACTIVATING IN-HOUSE EMERGENCY RESPONSE TEAM	

## C. EMERGENCY COMMUNICATIONS, PHONE NUMBERS AND NOTIFICATIONS

Whenever there is an imminent or actual emergency situation such as an explosion, fire, or release, the Emergency Coordinator (or his/her designee when the Emergency Coordinator is on call) shall:

1. Activate internal facility alarms or communications systems, where applicable, to notify all facility personnel.
2. Notify appropriate local authorities (i.e., call 9-1-1).
3. Notify the California Emergency Management Agency at (800) 852-7550.

Before facility operations are resumed in areas of the facility affected by the incident, the emergency coordinator shall notify the California Department of Toxic Substances Control (DTSC), the local Unified Program Agency (UPA), and the local fire department's hazardous materials program that the facility is in compliance with requirements to:

1. Provide for proper storage and disposal of recovered waste, contaminated soil or surface water, or any other material that results from an explosion, fire, or release at the facility; and
2. Ensure that no material that is incompatible with the released material is transferred, stored, or disposed of in areas of the facility affected by the incident until cleanup procedures are completed.

INTERNAL FACILITY EMERGENCY COMMUNICATIONS OR ALARM NOTIFICATION WILL OCCUR VIA: (Check all that apply)		C1.
<input type="checkbox"/> 1. VERBAL WARNINGS;	<input checked="" type="checkbox"/> 2. PUBLIC ADDRESS OR INTERCOM SYSTEM;	<input checked="" type="checkbox"/> 3. TELEPHONE;
<input type="checkbox"/> 4. PAGERS;	<input type="checkbox"/> 5. ALARM SYSTEM;	<input checked="" type="checkbox"/> 6. PORTABLE RADIO
NOTIFICATIONS TO NEIGHBORING FACILITIES THAT MAY BE AFFECTED BY AN OFF-SITE RELEASE WILL OCCUR BY: (Check all that apply)		C2.
<input checked="" type="checkbox"/> 1. VERBAL WARNINGS;	<input type="checkbox"/> 2. PUBLIC ADDRESS OR INTERCOM SYSTEM;	<input checked="" type="checkbox"/> 3. TELEPHONE;
<input type="checkbox"/> 4. PAGERS;	<input type="checkbox"/> 5. ALARM SYSTEM;	<input type="checkbox"/> 6. PORTABLE RADIO
EMERGENCY RESPONSE PHONE NUMBERS:	AMBULANCE, FIRE, POLICE AND CHP	9-1-1
	CALIFORNIA EMERGENCY MANAGEMENT AGENCY (CAL/EMA)	(800) 852-7550
	NATIONAL RESPONSE CENTER (NRC)	(800) 424-8802
	POISON CONTROL CENTER	(800) 222-1222
	LOCAL UNIFIED PROGRAM AGENCY (UPA/CUPA)	(408) 918-3400 C3.
OTHER (Specify):		C4. C5.
NEAREST MEDICAL FACILITY / HOSPITAL NAME:	<b>EL CAMINO HOSPITAL</b>	C6. C7.
AGENCY NOTIFICATION PHONE NUMBERS:	CALIFORNIA DEPT. OF TOXIC SUBSTANCES CONTROL (DTSC)	(916) 255-3545
	REGIONAL WATER QUALITY CONTROL BOARD	(510) 622-2300 C8.
	U.S. ENVIRONMENTAL PROTECTION AGENCY (US EPA)	(800) 300-2193
	CALIFORNIA DEPT OF FISH AND GAME (DFG)	(916) 358-2900
	U.S. COAST GUARD	(202) 267-2180
	CAL/OSHA	(916) 263-2800
	STATE FIRE MARSHAL	(916) 445-8200
OTHER (Specify):		C9. C10.
OTHER (Specify):		C11. C12.



**D. EMERGENCY CONTAINMENT AND CLEANUP PROCEDURES**

SPILL PREVENTION, CONTAINMENT, AND CLEANUP PROCEDURES: (Check all boxes that apply to indicate your procedures for containing spills, releases, fires or explosions; and, preventing and mitigating associated harm to persons, property, and the environment.)

- D1.
- ☒ 1. MONITOR FOR LEAKS, RUPTURES, PRESSURE BUILD-UP, ETC.;
  - ☒ 2. PROVIDE STRUCTURAL PHYSICAL BARRIERS (e.g., Portable spill containment walls);
  - ☒ 3. PROVIDE ABSORBENT PHYSICAL BARRIERS (e.g., Pads, pigs, pillows);
  - ☒ 4. COVER OR BLOCK FLOOR AND/ OR STORM DRAINS;
  - ☒ 5. BUILT-IN BERM IN WORK / STORAGE AREA;
  - ☐ 6. AUTOMATIC FIRE SUPPRESSION SYSTEM;
  - ☒ 7. ELIMINATE SOURCES OF IGNITION FOR FLAMMABLE HAZARDS (e.g. Flammable liquids, Propane);
  - ☒ 8. STOP PROCESSES AND/OR OPERATIONS;
  - ☒ 9. AUTOMATIC / ELECTRONIC EQUIPMENT SHUT-OFF SYSTEM;
  - ☒ 10. SHUT-OFF WATER, GAS, ELECTRICAL UTILITIES AS APPROPRIATE;
  - ☒ 11. CALL 9-1-1 FOR PUBLIC EMERGENCY RESPONDER ASSISTANCE / MEDICAL AID;
  - ☒ 12. NOTIFY AND EVACUATE PERSONS IN ALL THREATENED AREAS;
  - ☒ 13. ACCOUNT FOR EVACUATED PERSONS IMMEDIATELY AFTER EVACUATION CALL;
  - ☒ 14. PROVIDE PROTECTIVE EQUIPMENT FOR ON-SITE RESPONSE TEAM;
  - ☒ 15. REMOVE OR ISOLATE CONTAINERS / AREA AS APPROPRIATE;
  - ☐ 16. HIRE LICENSED HAZARDOUS WASTE CONTRACTOR;
  - ☒ 17. USE ABSORBENT MATERIAL FOR SPILLS WITH SUBSEQUENT PROPER LABELING, STORAGE, AND HAZARDOUS WASTE DISPOSAL AS APPROPRIATE;
  - ☐ 18. SUCTION USING SHOP VACUUM WITH SUBSEQUENT PROPER LABELING, STORAGE, AND HAZARDOUS WASTE DISPOSAL AS APPROPRIATE;
  - ☐ 19. WASH / DECONTAMINATE EQUIPMENT W/ CONTAINMENT and DISPOSAL OF EFFLUENT / RINSATE AS HAZARDOUS WASTE;
  - ☒ 20. PROVIDE SAFE TEMPORARY STORAGE OF EMERGENCY-GENERATED WASTES;
  - ☐ 21. OTHER (Specify):
- D2.

**E. FACILITY EVACUATION**

THE FOLLOWING ALARM SIGNAL(S) WILL BE USED TO BEGIN EVACUATION OF THE FACILITY (CHECK ALL THAT APPLY):

- E1.
- ☐ 1. BELLS;
  - ☐ 2. HORNS/SIRENS;
  - ☒ 3. VERBAL (I.E., SHOUTING);
  - ☒ 4. OTHER (Specify): **PORTABLE RADIOS AND TELEPHONES**
- E2.

THE FOLLOWING LOCATION(S) IS/ARE EVACUEE EMERGENCY ASSEMBLY AREA(S) (i.e., Front parking lot, specific street corner, etc.)

**ASSEMBLE AT MAIN ENTRY GATE ON STEVENS CANYON ROAD; ALTERNATIVE LOCATION, IF INTERNAL ROAD IS BLOCKED, IS TO MEET AT THE SAND PLANT**

Note: The Emergency Coordinator must account for all on site employees and/or site visitors after evacuation.

☒ EVACUATION ROUTE MAP(S) POSTED AS REQUIRED

Note: The map(s) must show primary and alternate evacuation routes, emergency exits, and primary and alternate staging areas, and must be prominently posted throughout the facility in locations where it will be visible to employees and visitors.

E4.

**F. ARRANGEMENTS FOR EMERGENCY SERVICES**

**Explanation of Requirement:** Advance arrangements with local fire and police departments, hospitals, and/or emergency services contractors should be made as appropriate for your facility. You may determine that such arrangements are not necessary.

ADVANCE ARRANGEMENTS FOR LOCAL EMERGENCY SERVICES (Check one of the following)

- F1.
- ☐ 1. HAVE BEEN DETERMINED NOT NECESSARY; or
  - ☒ 2. THE FOLLOWING ARRANGEMENTS HAVE BEEN MADE (Specify):
- F2.

**QUARRY OPERATIONS MANAGER WILL TAKE THE HMBP TO THE LOCAL FIRE STATION (AT STEVENS CREEK BLVD. AND FOOTHILL EXPRESSWAY)**

**G. EMERGENCY EQUIPMENT**

Check all boxes that apply to list emergency response equipment available at the facility and identify the location(s) where the equipment is kept and the equipment's capability, if applicable. [e.g., ☒ CHEMICAL PROTECTIVE GLOVES | Spill response kit | One time use, Oil & solvent resistant only.]

TYPE	EQUIPMENT AVAILABLE	LOCATION	CAPABILITY (If applicable)
<b>Safety and First Aid</b>	1. <input checked="" type="checkbox"/> CHEMICAL PROTECTIVE SUITS, APRONS, OR VESTS	Quarry Tractor Shop-Bldg. #2-areaA; Bldg.#5; and RVT Maint. Shop	
	2. <input checked="" type="checkbox"/> CHEMICAL PROTECTIVE GLOVES	Quarry Tractor Shop-Bldg. #2-areaA; Bldg.#5; RVT Maint. Shop and Sand	
	3. <input type="checkbox"/> CHEMICAL PROTECTIVE BOOTS		
	4. <input checked="" type="checkbox"/> SAFETY GLASSES / GOGGLES / SHIELDS	ALL-Issued to Employees	
	5. <input checked="" type="checkbox"/> HARD HATS	ALL-Issued to Employees	
	6. <input checked="" type="checkbox"/> CARTRIDGE RESPIRATORS	Rock Plant	
	7. <input type="checkbox"/> SELF-CONTAINED BREATHING APPARATUS (SCBA)		
	8. <input checked="" type="checkbox"/> FIRST AID KITS / STATIONS	RVT Maint. Shop; Quarry Tractor Shop-Joe's Office; Sand & Rock Plants	
	9. <input type="checkbox"/> PLUMBED EYEWASH FOUNTAIN / SHOWER		
	10. <input checked="" type="checkbox"/> PORTABLE EYEWASH KITS	RVT Maint. Shop; Sand and Rock Plants; Quarry Tractor Shop; Upper Scale	
	11. <input checked="" type="checkbox"/> OTHER	Difibulator @ Rock and Sand Plants; Office and Scale House	
	12. <input checked="" type="checkbox"/> OTHER	ALL- issued to Employees (Dust Mask)	
<b>Fire Fighting</b>	13. <input checked="" type="checkbox"/> PORTABLE FIRE EXTINGUISHERS	All bldgs @ Quarry Tractor Shop; RVT Maint. Shop; and most Earthmoving	
	14. <input type="checkbox"/> FIXED FIRE SYSTEMS / SPRINKLERS / FIRE HOSES		
	15. <input type="checkbox"/> FIRE ALARM BOXES OR STATIONS		
	16. <input type="checkbox"/> OTHER		
<b>Spill Control and Clean-Up</b>	17. <input checked="" type="checkbox"/> ALL-IN-ONE SPILL KIT	Fuel Truck; Service Truck; Quarry Tractor Shop-Bldg#2	
	18. <input checked="" type="checkbox"/> ABSORBENT MATERIAL	Quarry Tractor Shop-Bldg #1; RVT Maint. Shop; and Scale House	
	19. <input checked="" type="checkbox"/> CONTAINER FOR USED ABSORBENT	Quarry Tractor Shop-Bldg.#4, #2-areaB; RVT Maint. Shop	
	20. <input checked="" type="checkbox"/> BERMING / DIKING EQUIPMENT	All-earthmoving equip. can construct berms	
	21. <input checked="" type="checkbox"/> BROOM	Lower Scale House; Quarry Tractor Shop; RVT Maint. Shop; Sand Plant &	
	22. <input checked="" type="checkbox"/> SHOVEL	Lower Scale House; Quarry Tractor Shop; RVT Maint. Shop; Sand Plant &	
	23. <input checked="" type="checkbox"/> SHOP VAC	Quarry Tractor Shop and RVT Maint. Shop	
	24. <input type="checkbox"/> EXHAUST HOOD		
	25. <input type="checkbox"/> EMERGENCY SUMP / HOLDING TANK		
	26. <input type="checkbox"/> CHEMICAL NEUTRALIZERS		
	27. <input type="checkbox"/> GAS CYLINDER LEAK REPAIR KIT		
	28. <input type="checkbox"/> SPILL OVERPACK DRUMS		
	29. <input type="checkbox"/> OTHER		
<b>Communications and Alarm Systems</b>	30. <input checked="" type="checkbox"/> TELEPHONES (Includes cellular)	All	
	31. <input checked="" type="checkbox"/> INTERCOM / PA SYSTEM	Office	
	32. <input checked="" type="checkbox"/> PORTABLE RADIOS	ALL- Issued to Employees	
	33. <input type="checkbox"/> AUTOMATIC ALARM CHEMICAL MONITORING EQUIPMENT		
<b>Other</b>	34. <input checked="" type="checkbox"/> OTHER	PG&E Shut-Off; Sand and Rock Plants; Quarry Tractor Shop	
	35. <input type="checkbox"/> OTHER		



**H. EARTHQUAKE VULNERABILITY**

Identify areas of the facility that are vulnerable to hazardous materials releases / spills due to earthquake-related motion. These areas require immediate isolation and inspection.

VULNERABLE AREAS: (Check all that apply)	H1.	LOCATIONS (e.g., shop, outdoor shed, forensic lab)	
<input checked="" type="checkbox"/> 1. HAZARDOUS MATERIALS / WASTE STORAGE AREA		FUELING STATION (GRID D5) ON MIDDLE QUARRY FLOOR	H2.
<input type="checkbox"/> 2. PROCESS LINES / PIPING			H3.
<input type="checkbox"/> 3. LABORATORY			H4.
<input type="checkbox"/> 4. WASTE TREATMENT AREA			H5.

Identify mechanical systems vulnerable to releases / spills due to earthquake-related motion. These systems require immediate isolation and inspection.

VULNERABLE SYSTEMS: (Check all that apply)	H6.	LOCATIONS	
<input checked="" type="checkbox"/> 1. SHELVES, CABINETS AND RACKS		RV TRUCKING BLDG (GRID D5) ON MIDDLE QUARRY FLOOR & QUARRY TRACTOR BLDG #5 & Bldg #2-area A (GRID D5)	H7.
<input checked="" type="checkbox"/> 2. TANKS (EMERGENCY SHUTOFF)		Fueling Station (Grid D5); and Sand Plant-Lime Slurry Tank (Grid B3)	H8.
<input checked="" type="checkbox"/> 3. PORTABLE GAS CYLINDERS		All are chained to fixed item: Quarry Tractor Bldg. #1&2; RVT Maint. Shop; & Mobile/Service Truck	H9.
<input checked="" type="checkbox"/> 4. EMERGENCY SHUTOFF AND/OR UTILITY VALVES		Rock and Sand Plants; Quarry Tractor Shop - bBdg #2 -area A	H10.
<input type="checkbox"/> 5. SPRINKLER SYSTEMS			H11.
<input checked="" type="checkbox"/> 6. STATIONARY PRESSURIZED CONTAINERS (e.g., Propane dispensing tank)		Quarry Tractor Shop-Bldg. #2-area A; RVT Maint. Shop; Sand and Rock Plants	H12.

**I. EMPLOYEE TRAINING**

**Explanation of Requirement:** Employee training is required for all employees handling hazardous materials and hazardous wastes in day-to-day or clean-up operations including volunteers and/or contractors. Training must be:

- Provided within 6 months for new hires;
- Amended as necessary prior to change in process or work assignment;
- Given upon modification to the Emergency Response / Contingency Plan, and updated/refreshed annually for all employees.

Required content includes all of the following:

- Material Safety Data Sheets;
- Hazard communication related to health and safety;
- Methods for safe handling of hazardous substances;
- Fire hazards of materials / processes;
- Conditions likely to worsen emergencies;
- Coordination of emergency response;
- Notification procedures;
- Applicable laws and regulations;
- Communication and alarm systems;
- Personal protective equipment;
- Use of emergency response equipment (e.g. Fire extinguishers, respirators, etc.);
- Decontamination procedures;
- Evacuation procedures;
- Control and containment procedures;
- UST monitoring system equipment and procedures (if applicable).

INDICATE HOW EMPLOYEE TRAINING PROGRAM IS ADMINISTERED (Check all that apply)

- |   |                                     |  |     |
|---|-------------------------------------|--|-----|
| <input checked="" type="checkbox"/> 1. FORMAL CLASSROOM;  | <input type="checkbox"/> 2. VIDEOS; | <input checked="" type="checkbox"/> 3. SAFETY / TAILGATE MEETINGS; | I1. |
| <input checked="" type="checkbox"/> 4. STUDY GUIDES / MANUALS (Specify): Dept of Labor - MSHA Worksheets; topics such as: Respirators, Flammable Liquids, Fire Extinguishers, Torch Safety, Personal Protective Equipment |                                     |  | I2. |
| <input checked="" type="checkbox"/> 5. OTHER (Specify): Hazardous Comm. Program; and Injury, Illness Prevention Plan (IIPP)   |                                     |  | I3. |
| <input type="checkbox"/> 6. NOT APPLICABLE BECAUSE FACILITY HAS NO EMPLOYEES  |                                     |  |     |

**Large Quantity Generator (LQG) Training Records:** Large quantity hazardous waste generators (i.e., who generate more than 270 gallons/1,000 kilograms of hazardous waste per month) must retain written documentation of employee hazardous waste management training sessions which includes:

- A written outline/agenda of the type and amount of both introductory and continuing training that will be given to persons filling each job position having responsibility for the management of hazardous waste (e.g., labeling, manifesting, compliance with accumulation time limits, etc.).
- The name, job title, and date of training for each hazardous waste management training session given to an employee filling such a job position; and
- A written job description for each of the above job positions that describes job duties and the skills, education, or other qualifications required of personnel assigned to the position.
- Current employee training records must be retained until closure of the facility.
- Former employee training records must be retained at least three years after termination of employment.

**J. LIST OF ATTACHMENTS**

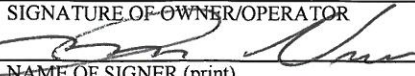
(Check one of the following)

- |  |     |
|--|-----|
| <input type="checkbox"/> 1. NO ATTACHMENTS ARE REQUIRED; or                  | J1. |
| <input checked="" type="checkbox"/> 2. THE FOLLOWING DOCUMENTS ARE ATTACHED: | J2. |

UN-021: Aboveground Separation, Containment, and Monitoring Plan; and Injury, Illness Prevention Plan (IIPP)

**K. SIGNATURE / CERTIFICATION**

**Certification:** Based on my inquiry of those individuals responsible for obtaining the information, I certify under penalty of law that I have personally examined and am familiar with the information submitted and believe the information is true, accurate, and complete, and that a copy is available on site.

SIGNATURE OF OWNER/OPERATOR	DATE SIGNED	K1.
	5/1/16	
NAME OF SIGNER (print)	TITLE OF SIGNER	K3.
JASON VOSS	QUARRY OPERATIONS MANAGER	