


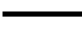











SOURCE: ESRI World Shaded Relief accessed Sept. 2020, ESRI World Topographic Map accessed Sept. 2020; ESRI World Streetmap, 2009; compiled by Benchmark Resources in 2020

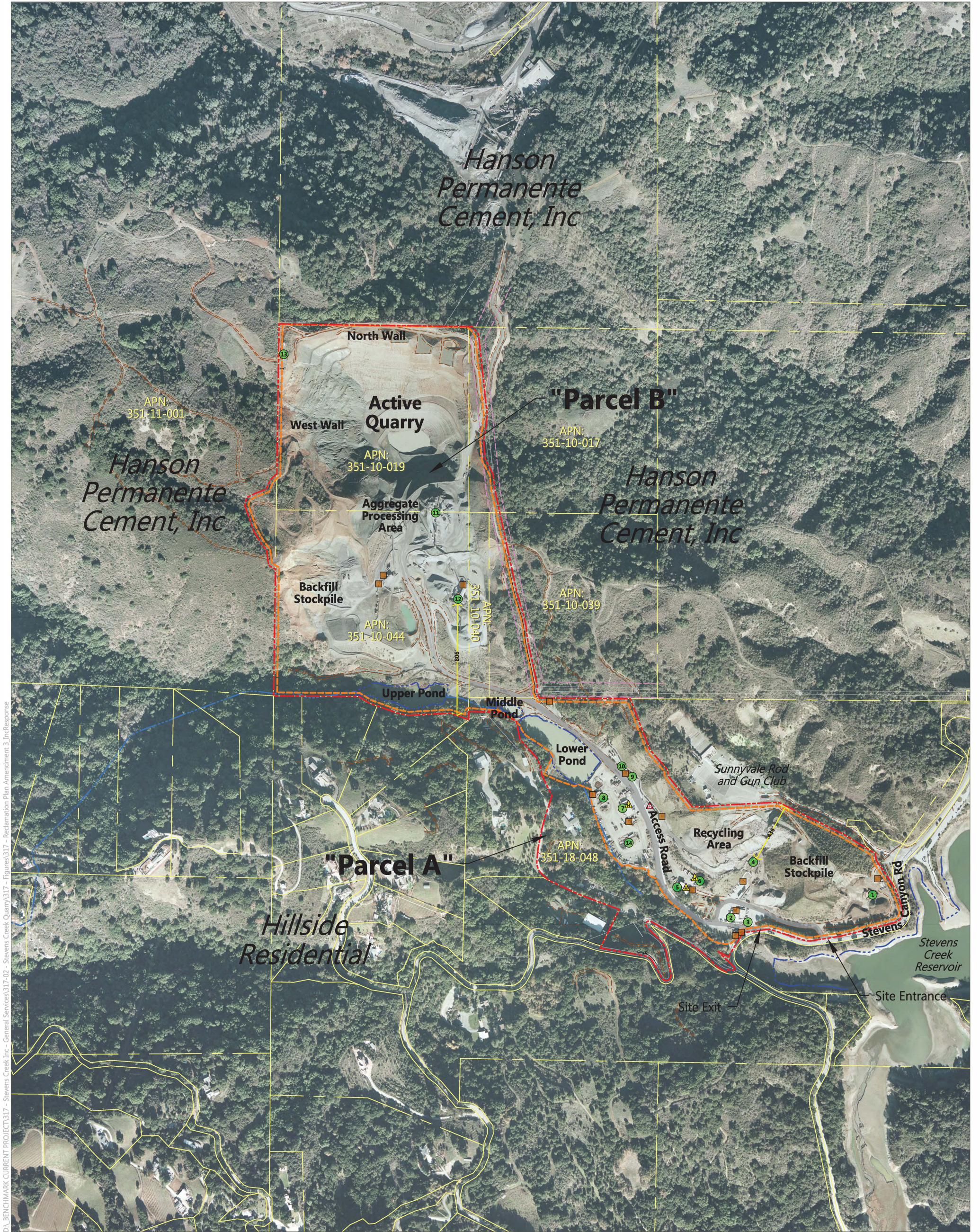
NOTES: This figure was prepared for land use planning and informational purposes only. The info shown and its accuracy are reflective of the date the data was accessed or produced.

-  Site Location
-  City Boundary
-  County Boundary
-  Major Highway
-  Waterway
-  Water Body



NOTES:

-
-  Site Boundary
 Reclamation Plan Boundary
 City Boundary
 Water Body
 Major Highway
 Street
 Waterway

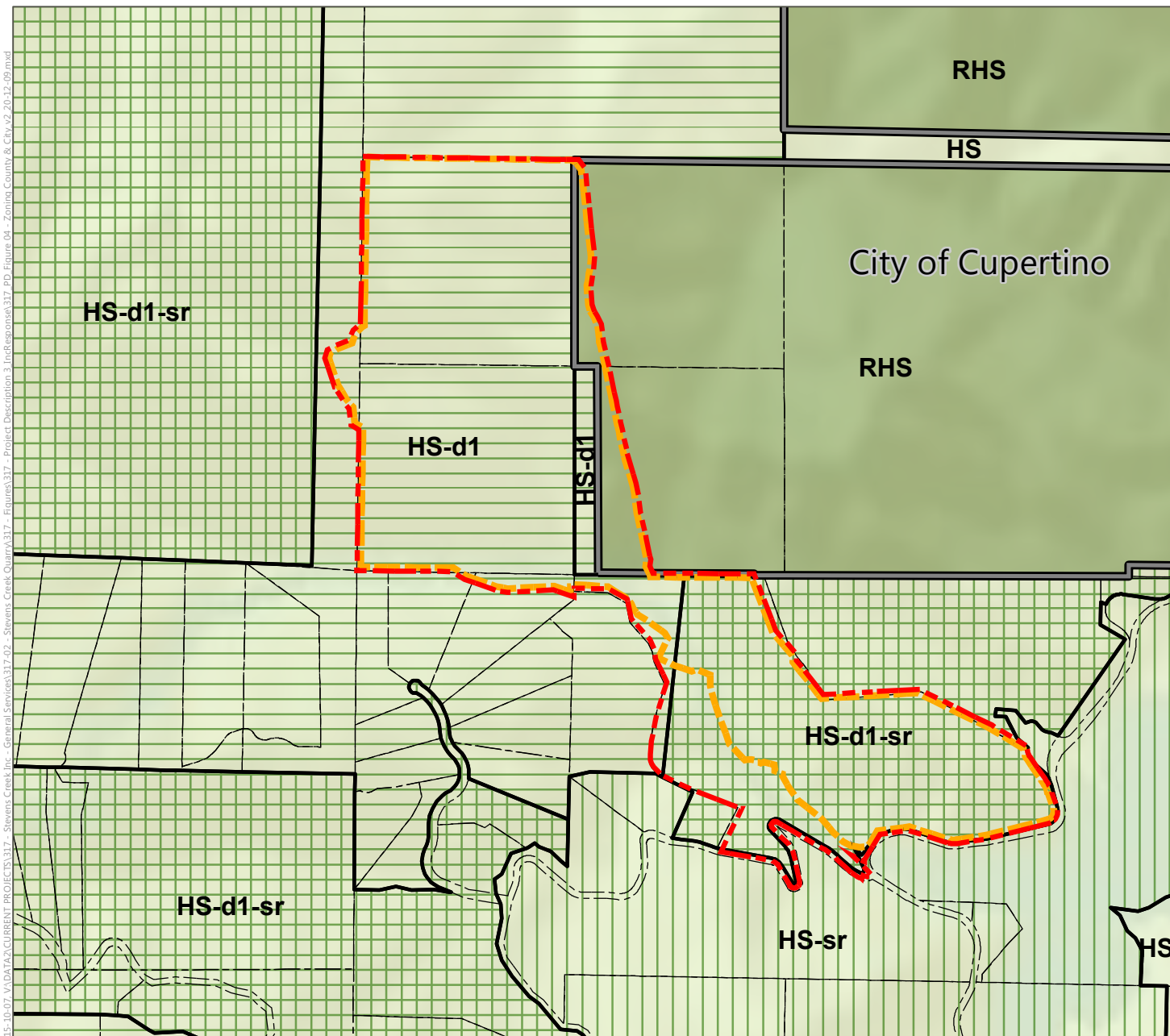


SOURCE: Aerial & Site Parcel Lines—Muir Consulting Inc, flown and surveyed 8-13-2020; Other Parcel Lines—Parcel Quest, accessed December 2020 & Santa Clara Interactive Map, accessed December 2020; compiled by Benchmark Resources in 2020

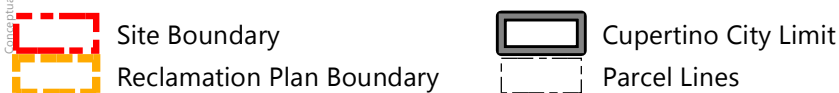
- NOTES:
1. Parcel boundaries, orthophotography and topographic survey data prepared by Muir Consulting, Inc. Aerial survey date: 6-18-2020.
 2. See Appendix D for stamped and signed Professional Land Surveyor stamped drawings.

- | | | |
|-----------------------------------------------------------------------------------------|------------|-------------------------------------------------------------|
| Site Boundary | ±170 acres | Portable Bathroom Facilities (no onsite septic) |
| Reclamation Plan Boundary | ±147 acres | Above Ground Diesel Fuel Storage with Secondary Containment |
| Parcel Line & Assessor's Parcel Number | | Hazardous Materials Storage |
| 100-foot Power Line Easement | | Distance from Loading Point to nearest Parcel Line |
| Existing Building/Mining Equipment/Other Facilities (See list below for callouts shown) | | Dirt Road |
| | | Asphalt Road |
| | | Access Road |
| | | Water Border |
| | | Swiss Creek |
| | | Cross Section |
-
- | | |
|------------------------|-----------------------------|
| 1. Top Soil Plant | 8. Maintenance Shop |
| 2. Main Office | 9. Upper Scale |
| 3. Lower Scale House | 10. Maintenance Shop Office |
| 4. Recycle Plant | 11. Rock Plant |
| 5. Tractor Shop | 12. Wash Plant (Press) |
| 6. Tractor Shop Office | 13. Radio Tower |
| 7. Truck Shop | 14. Equipment Storage |

Existing Conditions Aerial Photograph
STEVENS CREEK QUARRY
PROJECT DESCRIPTION
Figure 3



SOURCE: County Zoning—Santa Clara County Zoning Atlas, pg. 105, updated Aug. 2016; City Zoning—City of Cupertino Zoning Map, prepared by the Community Development Department, updated Sept. 3 2019; Parcels—SCC Assessor's Dept, SCC Info Services Dept, 2017; ESRI World Shaded Relief accessed Sept. 2020; compiled by Benchmark Resources in 2020

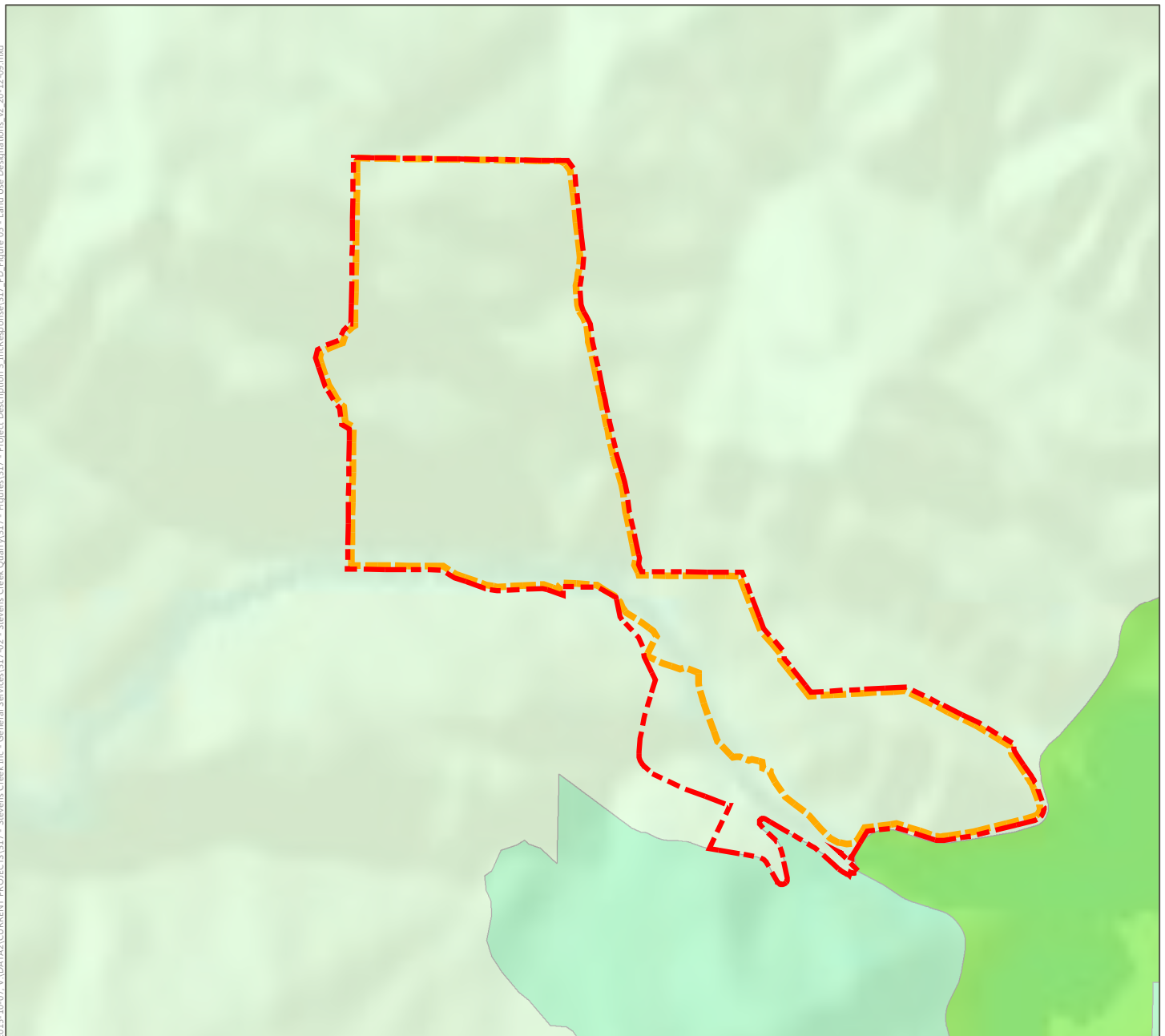


County of Santa Clara Zoning




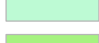

- HS** Hillside
- d1** Combining District: -d1 District (Santa Clara Valley Viewshed)
- sr** Combining District: -sr District (Scenic Roads)

City of Cupertino Zoning

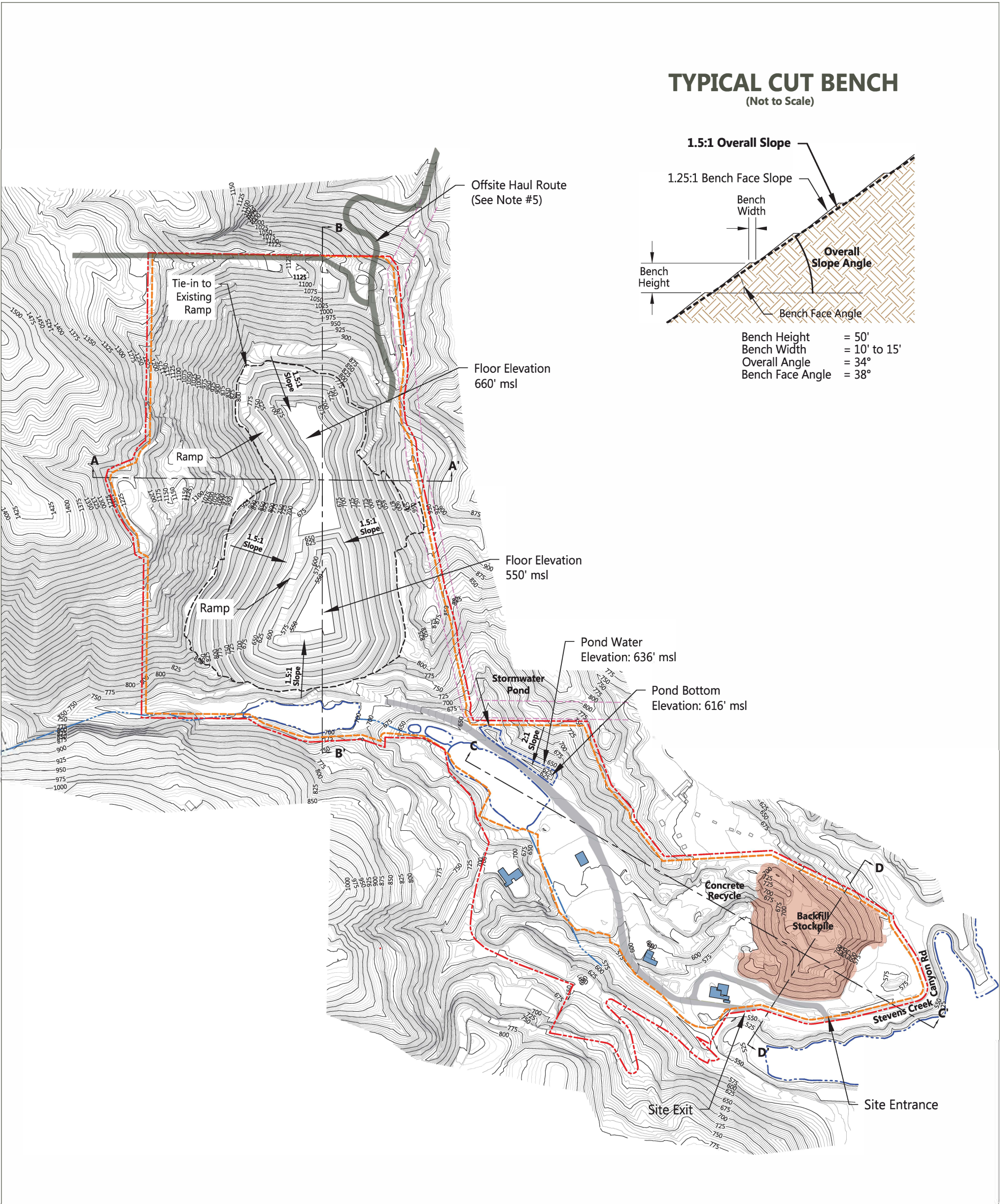
- RHS** Residential Hillside



SOURCE: General Plan Designations—County of Santa Clara Planning Office, 1995 Santa Clara County General Plan, updated Oct. 2016; ESRI World Shaded Relief accessed Sept. 2020; compiled by Benchmark Resources in 2020

-  Site Boundary
-  Reclamation Plan Boundary
-  Hillsides
-  Other Public Open Lands
-  Regional Parks, Existing

D:\BENCHMARK\CURRENT PROJECT\317 - Stevens Creek Quarry\317-02 - Stevens Creek Inc - General Services\317-02 - Stevens Creek Inc - Reclamation Plan Amendment 3 - IncResponse



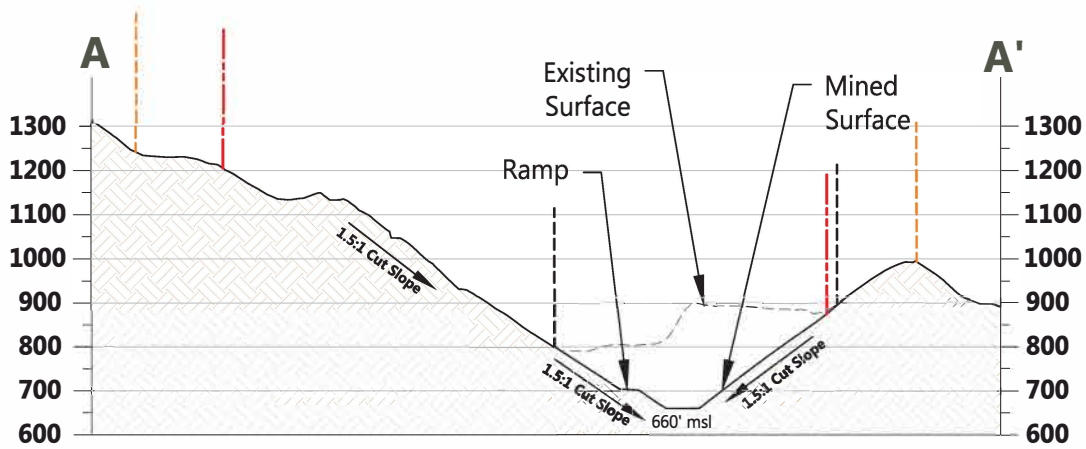
SOURCE: Topography–Muir Consulting, Inc., flown 6-18-2020; mine plan compiled by Benchmark Resources in 2020

NOTES:

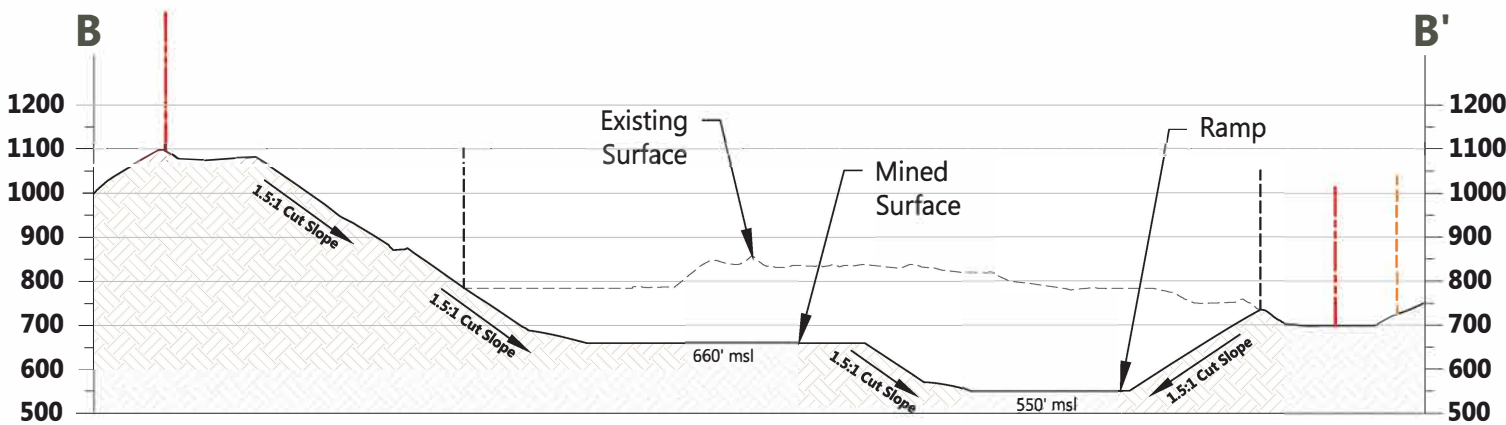
1. Contour intervals: 5'-minor; 25'-major. Elevations shown in mean sea level (msl).
2. Slope angles indicated are overall; see "Typical Cut Slope" for details.
3. Top of cut slopes planned at 25' from Parcel Boundary, but would meet County requirements as specified in Sec. C12-558 of the Design Standards
4. Active slopes may be steeper and have different bench intervals than final reclaimed cut slopes.
5. Planned Mine Cut Slopes: 1.5h:1v.
6. Planned East Wall Cut Slope: 1h:1v.
7. Haul Road Ramp Slope: 10% to 15%. Ramps, access roads, and primary travel routes may vary in location and size throughout operations progression.
8. Off-site "Permanente Rock Plant Haul Road" per Permanente Quarry Amended Reclamation Plan, May 2019.
9. See Sheet 3 for cross sections.
10. Mine and reclamation design based on topography prepared by Muir Consulting, Inc. Aerial survey date: 6-18-2020. See Appendix D for Professional Land Surveyor stamped drawings.
11. Stormwater pond capacity: Approximately 3.9 acre-feet
12. Mine Plan Reserves: 12.4 million tons.
13. The planned reclamation boundary and mining depth are shown; however, the extent of operations may or may not reach these limits. Total acreage to be disturbed and reclaimed will be within the limits of the reclamation plan boundary. Facilities and configurations within this boundary are approximate. All acreages are approximate and not intended to reflect goals for any particular surface type. Variations are subject to actual mined conditions and will not affect success of post mining land uses.

	Site Boundary	±170 acres		Cross Section
	Reclamation Plan Boundary	±147 acres		Water Border
	Mine Plan Modified Below This Elevation to 550' msl			Swiss Creek
	100-foot Power Line Easement			Existing Building within Site Boundary
	Access Road			Existing Building outside Site Boundary
	Backfill Stockpile Area	±10 acres		

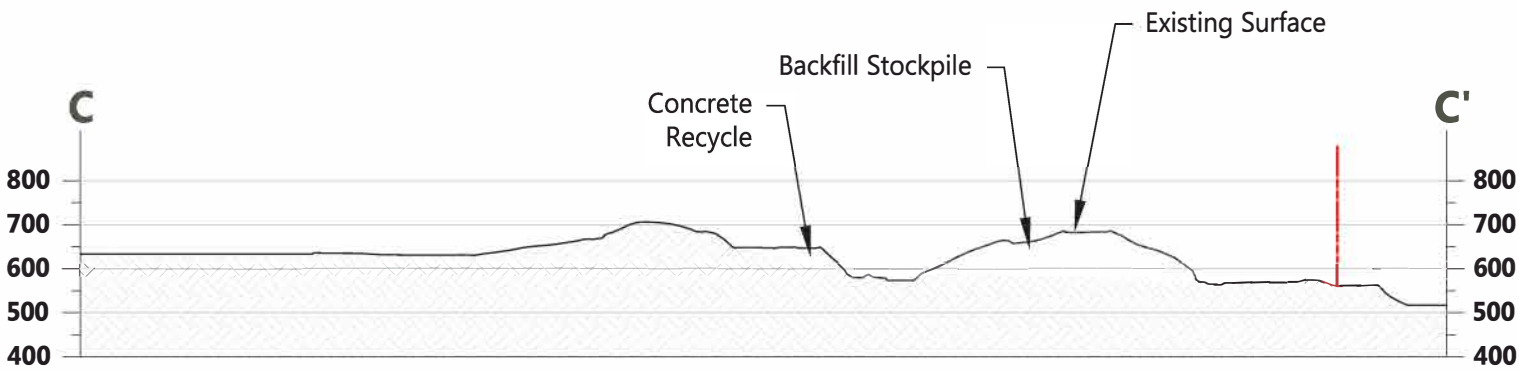
DA_BENCHMARK_CURRENT_PROJECT\317 - Stevens Creek Inc - General Services\317-02 - Stevens Creek Quarry\317 - Figures\317 - Reclamation Plan Amendment 3_IncResponse



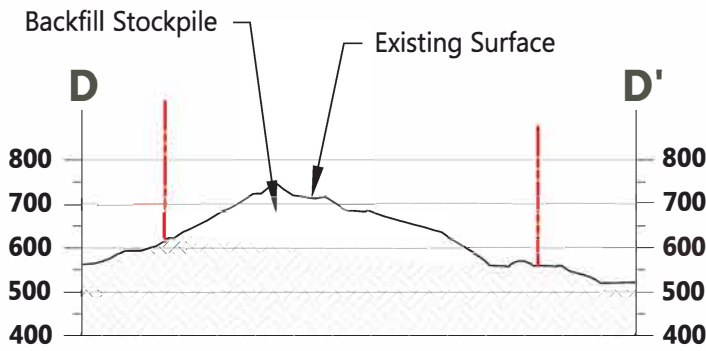
CROSS SECTION A-A'



CROSS SECTION B-B'



CROSS SECTION C-C'



CROSS SECTION D-D'

SOURCE: Topography-Muir Consulting, Inc., flown 6-18-2020; mine plan compiled by Benchmark Resources in 2020

NOTES:

1. Slope angles indicated are overall; see "Typical Cut Slope" on Sheet 2 for details.
2. Active slopes may be steeper and have different bench intervals than final reclaimed cut slopes.
3. Planned Mine Cut Slopes: 1.5h:1v.
4. Planned East Wall Cut Slope: 1h:1v.
5. Haul Road Ramp Slope: 10% to 15%. Ramps, access roads, and primary travel routes may vary in location and size throughout operations progression.
6. East Wall Slope: 1h:1v overall cut slope angle.
7. "msl" = mean sea level.
8. See Sheet 2 for cross section locations shown.
11. Mine and reclamation design based on topography prepared by Muir Consulting, Inc. Aerial survey date: 6-18-2020. See Appendix D for Professional Land Surveyor stamped drawings.
12. Mine Plan Reserves: 12.4 million tons.
13. The planned reclamation boundary and mining depth are shown; however, the extent of operations may or may not reach these limits. Total acreage to be disturbed and reclaimed will be within the limits of the reclamation plan boundary. Facilities and configurations within this boundary are approximate. All acreages are approximate and not intended to reflect goals for any particular surface type. Variations are subject to actual mined conditions and will not affect success of post mining land uses.

--- Site Boundary
--- Reclamation Plan Boundary



IMAGE 1: SOIL PLANT



IMAGE 2: MAIN OFFICE

*See Figure 3 and Sheet 1 for locations of viewpoints.



IMAGE 3: LOWER SCALE HOUSE



IMAGE 4: RECYCLE PLANT

*See Figure 3 and Sheet 1 for locations of viewpoints.



IMAGE 5: TRACTOR SHOP



IMAGE 6: TRACTOR SHOP OFFICE

*See Figure 3 and Sheet 1 for locations of viewpoints.



IMAGE 7: TRUCK SHOP



IMAGE 8: MAINTENANCE SHOP

*See Figure 3 and Sheet 1 for locations of viewpoints.



IMAGE 9: UPPER SCALE



IMAGE 10: MAINTENANCE SHOP OFFICE

*See Figure 3 and Sheet 1 for locations of viewpoints.



IMAGE 11: ROCK PLANT



IMAGE 12: WASH PLANT (PRESS)

*See Figure 3 and Sheet 1 for locations of viewpoints.



IMAGE 13: RADIO TOWER

*See Figure 3 and Sheet 1 for locations of viewpoints.



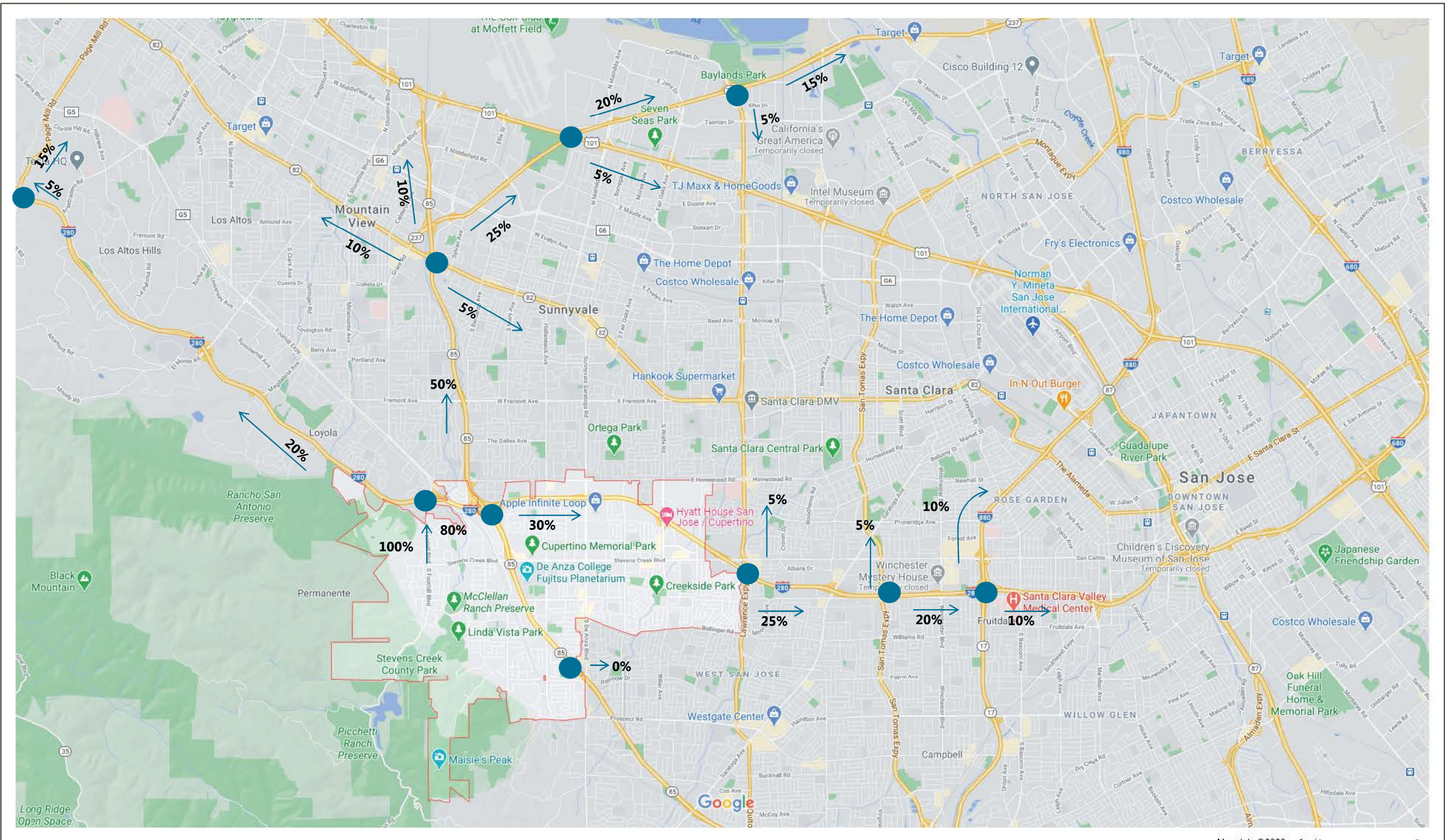
Aerial Image Dated June 18, 2020

Internal Circulation, Queuing, and Parking
 STEVENS CREEK QUARRY
 PROJECT DESCRIPTION
Figure 9a



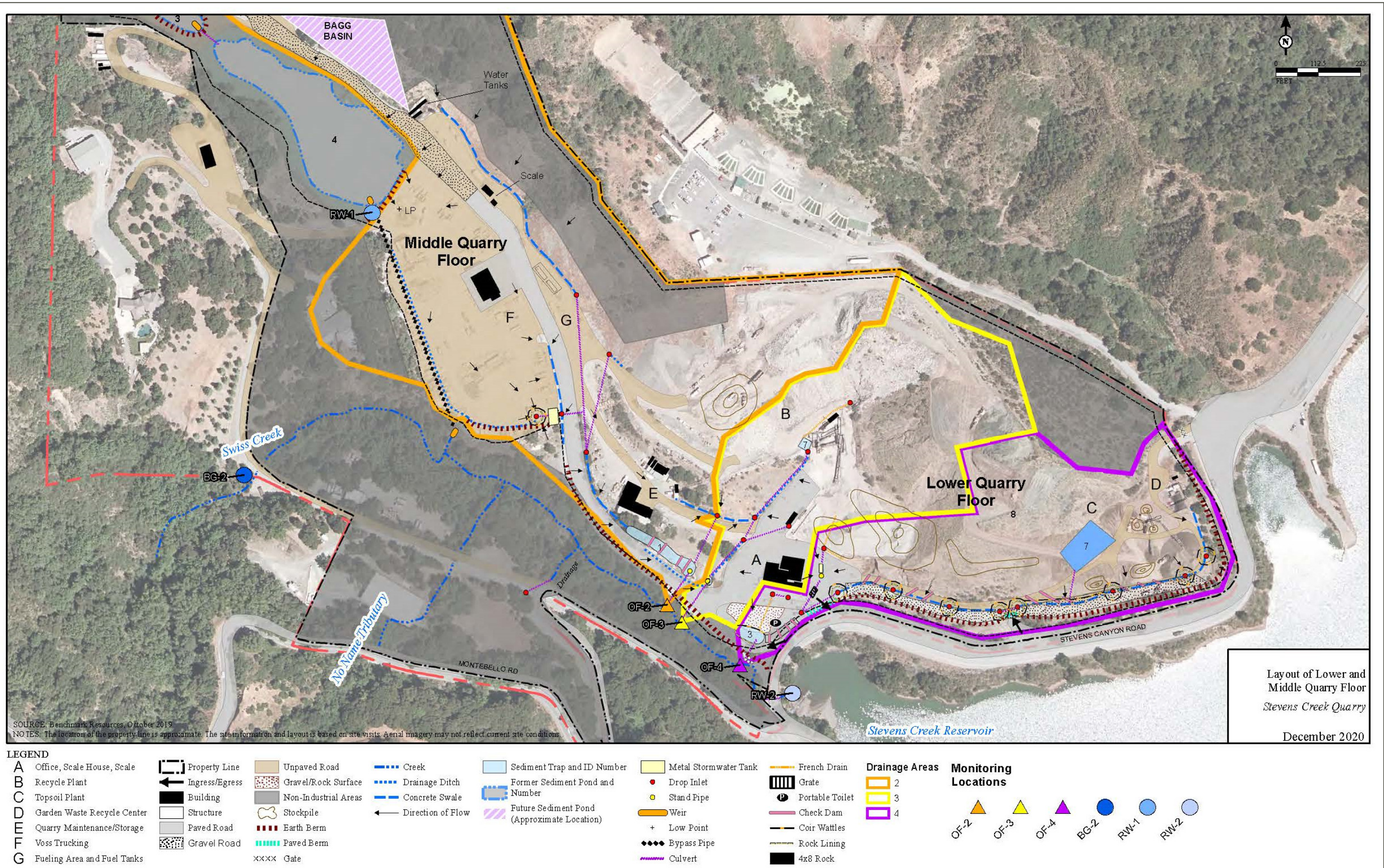
Aerial Image Dated June 18, 2020

Internal Circulation, Queuing, and Parking
 STEVENS CREEK QUARRY
 PROJECT DESCRIPTION
Figure 9b

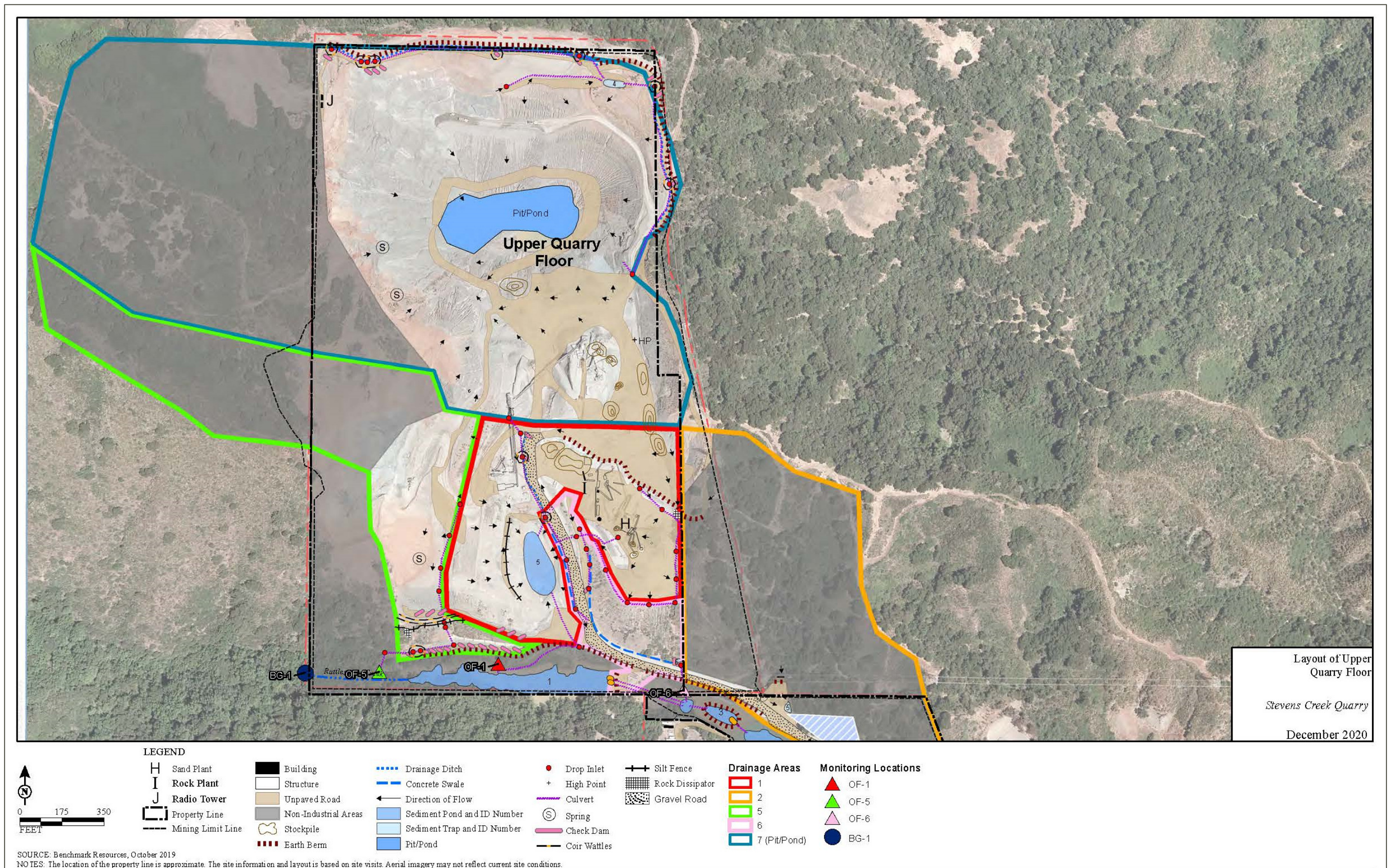


Source: Google, Maps, 2020

Project Trip Distribution
STEVENS CREEK QUARRY
PROJECT DESCRIPTION
Figure 10



Source: Geosyntech (December 2020)

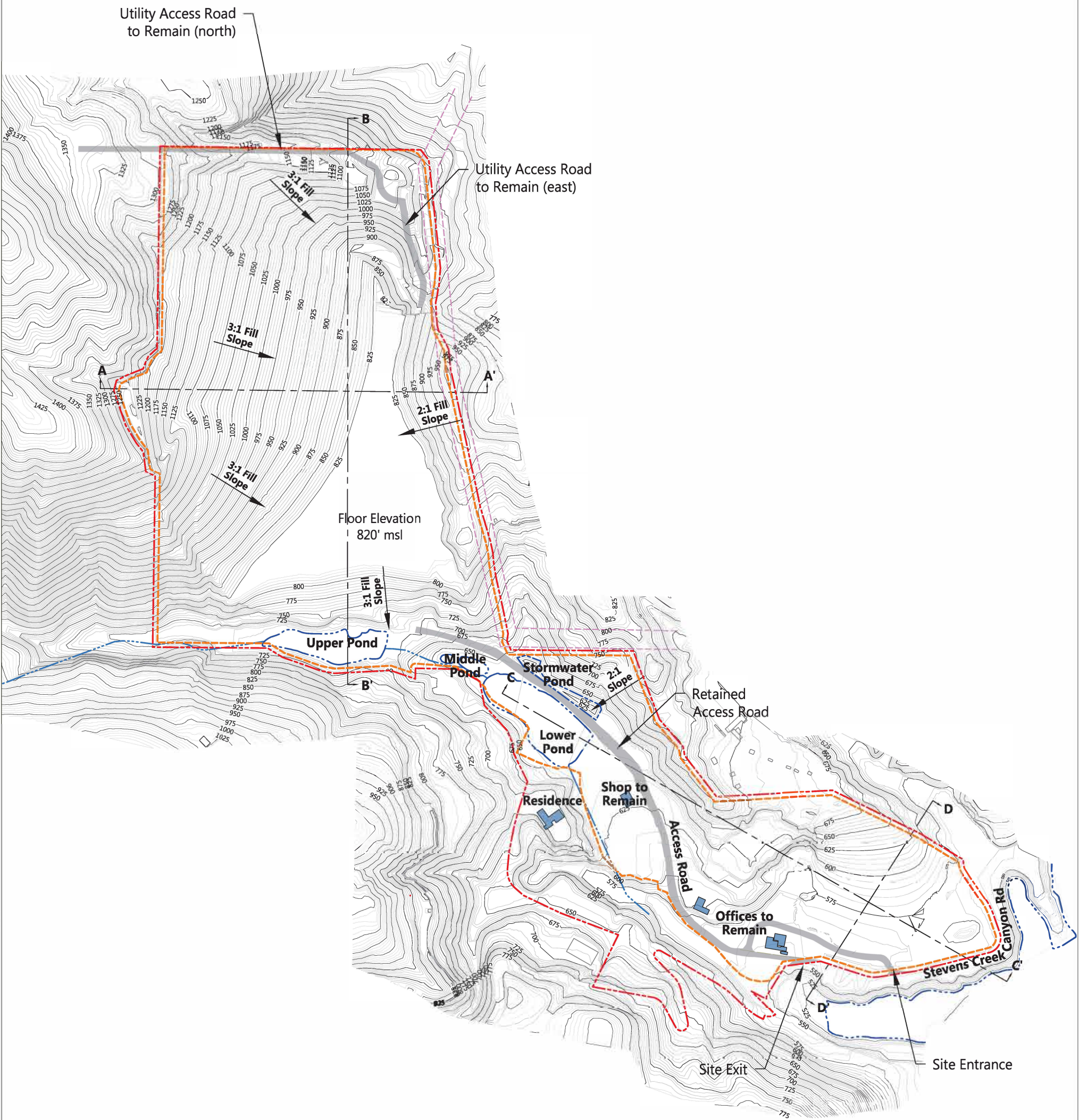


Source: Geosyntech (December 2020)



Source: Stevens Creek Quarry, 2020

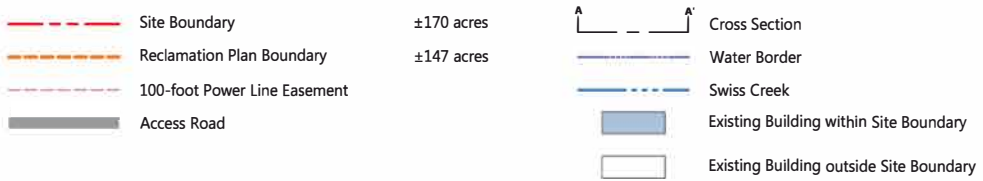
D:\BENCHMARK\CURRENT PROJECT\317 - Stevens Creek Quarry\317 - Figures\317 - Reclamation Plan Amendment 3_InchResponse



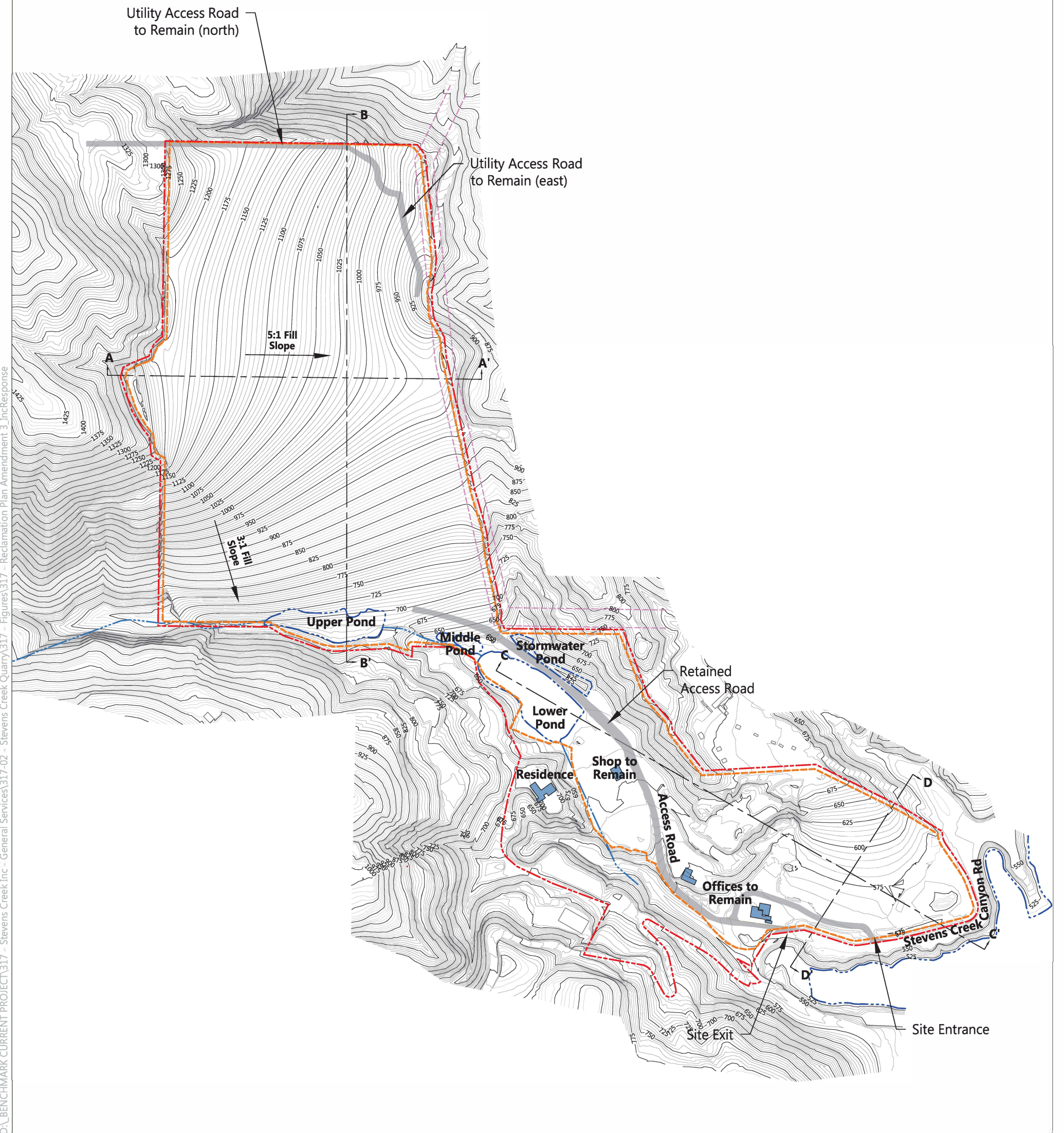
SOURCE: Topography—Muir Consulting, Inc., flown 6-18-2020; mine plan compiled by Benchmark Resources in 2020

NOTES:

1. Contour intervals: 5'-minor; 25'-major. Elevations shown in mean sea level (msl).
2. Planned Reclamation Fill Slope: 3h:1v.
3. Planned East Wall Fill Slope: 2h:1v.
4. "msl" = mean sea level.
5. See Sheet 6 for cross sections shown.
6. Mine and reclamation design based on topography prepared by Muir Consulting, Inc. Aerial survey date: 6-18-2020. See Appendix D for Professional Land Surveyor stamped drawings.
7. Stormwater pond capacity: Approximately 3.9 acre-feet
8. Fill Volume = ±11,700,00 cubic yards (CY).
9. The planned reclamation boundary and mining depth are shown; however, the extent of operations may or may not reach these limits. Total acreage to be disturbed and reclaimed will be within the limits of the reclamation plan boundary. Facilities and configurations within this boundary are approximate. All acreages are approximate and not intended to reflect goals for any particular surface type. Variations are subject to actual mined conditions and will not affect success of post mining land uses.



D:\BENCHMARK\CURRENT PROJECT\317 - Stevens Creek Inc - General Services\317-02 - Stevens Creek Quarry\317 - Figures\317 - Reclamation Plan Amendment 3 Inc\response



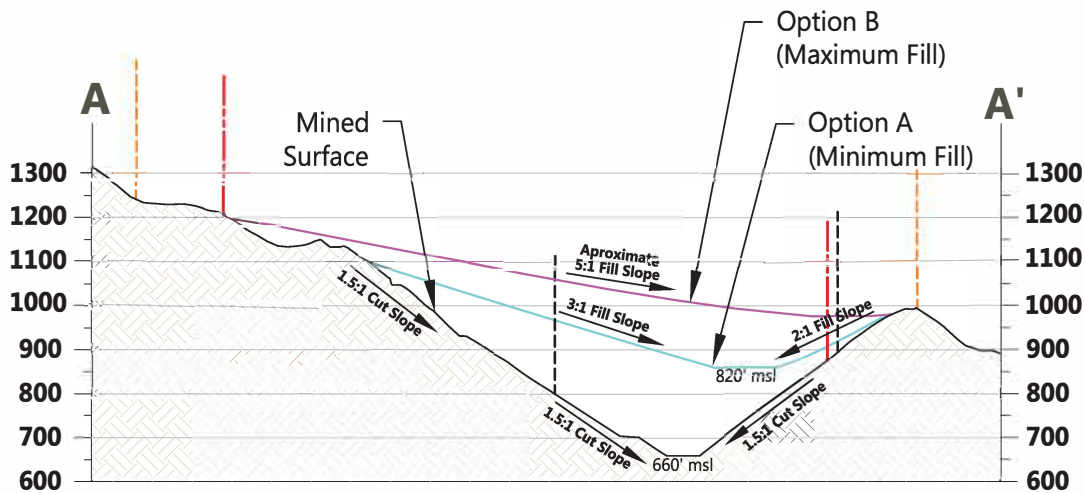
SOURCE: Topography—Muir Consulting, Inc., flown 6-18-2020; mine plan compiled by Benchmark Resources in 2020

NOTES:

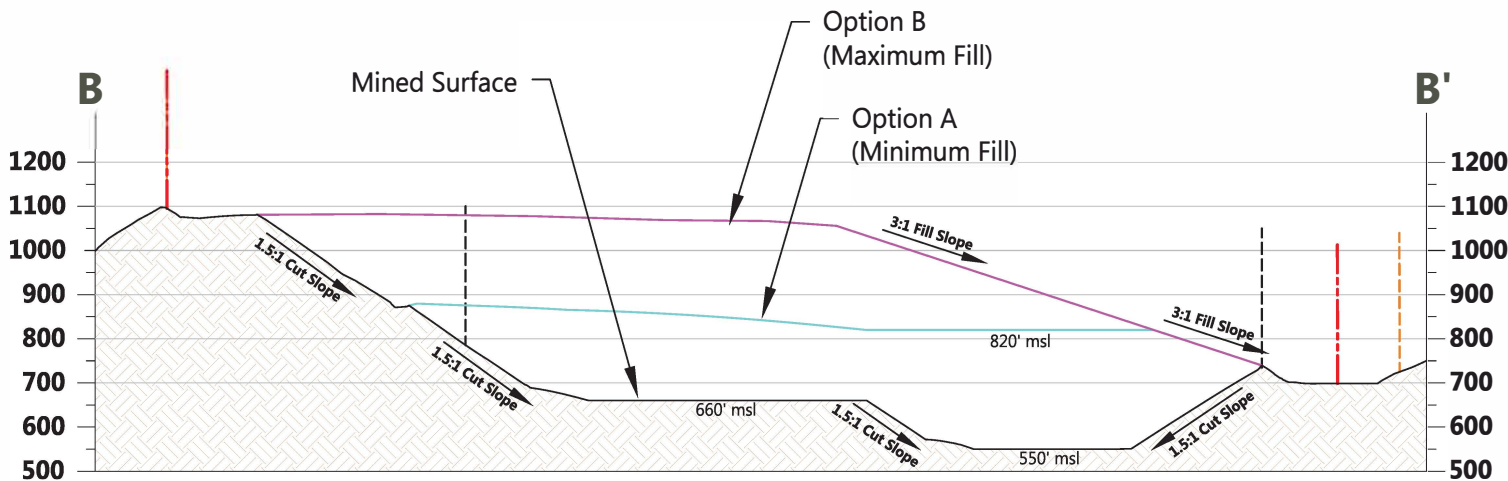
1. Contour intervals: 5'-minor; 25'-major. Elevations shown in mean sea level (msl).
2. Planned Reclamation Fill Slope: 5h:1v.
3. "msl" = mean sea level.
4. See Sheet 6 for cross sections shown.
5. Mine and reclamation design based on topography prepared by Muir Consulting, Inc. Aerial survey date: 6-18-2020. See Appendix D for Professional Land Surveyor stamped drawings.
6. Stormwater pond capacity: Approximately 3.9 acre-feet
7. Fill Volume = ±20,500,00 cubic yards (CY).
8. The planned reclamation boundary and mining depth are shown; however, the extent of operations may or may not reach these limits. Total acreage to be disturbed and reclaimed will be within the limits of the reclamation plan boundary. Facilities and configurations within this boundary are approximate. All acreages are approximate and not intended to reflect goals for any particular surface type. Variations are subject to actual mined conditions and will not affect success of post mining land uses.



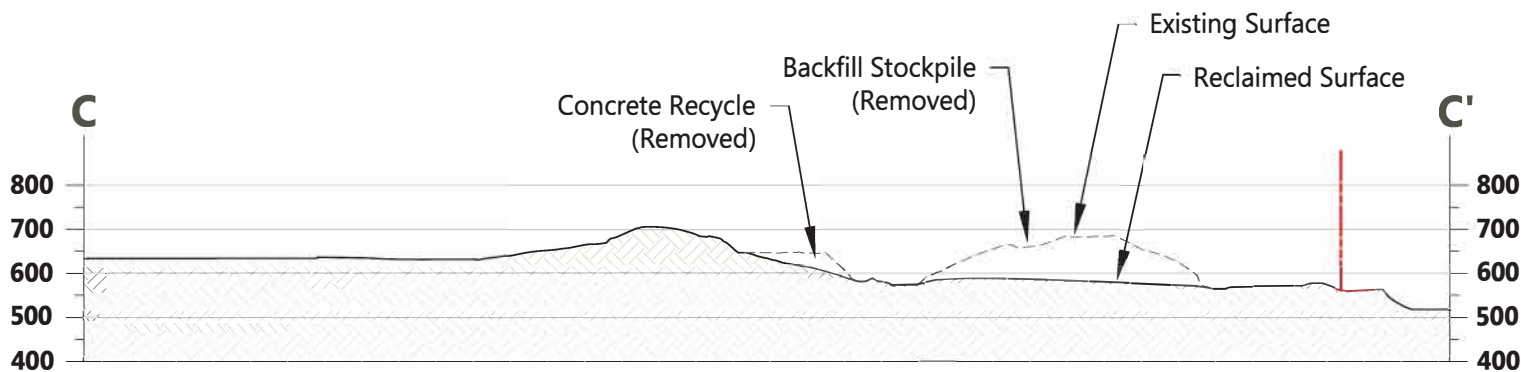
DA_BENCHMARK CURRENT PROJECT 317 - Stevens Creek Quarry 317 - Figure 1317 - Reclamation Plan Amendment 3 - In response



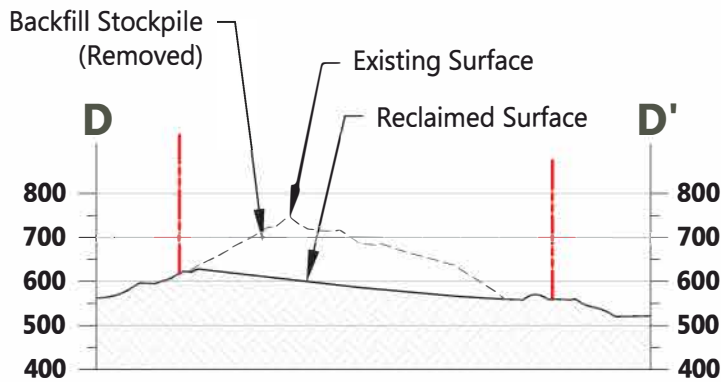
CROSS SECTION A-A'



CROSS SECTION B-B'



CROSS SECTION C-C'



CROSS SECTION D-D'

SOURCE: Topography-Muir Consulting, Inc., flown 6-18-2020; mine plan compiled by Benchmark Resources in 2020

NOTES:

1. Active slopes may be steeper and have different bench intervals than final reclaimed cut slopes.
2. "msl" = mean sea level.
3. Planned Reclamation Fill Slope: 3h:v1 (Option A), 5h:v1 (Option B).
4. See Sheets 4 and 5 for cross section locations shown.
11. Mine and reclamation design based on topography prepared by Muir Consulting, Inc. Aerial survey date: 6-18-2020. See Appendix D for Professional Land Surveyor stamped drawings.
12. Fill Volume Option A = ±11,700,000 cubic yards (CY). Fill Volume Option B = ±20,500,000 cubic yards (CY).
13. The planned reclamation boundary and mining depth are shown; however, the extent of operations may or may not reach these limits. Total acreage to be disturbed and reclaimed will be within the limits of the reclamation plan boundary. Facilities and configurations within this boundary are approximate. All acreages are approximate and not intended to reflect goals for any particular surface type. Variations are subject to actual mined conditions and will not affect success of post mining land uses.

--- Site Boundary
--- Reclamation Plan Boundary