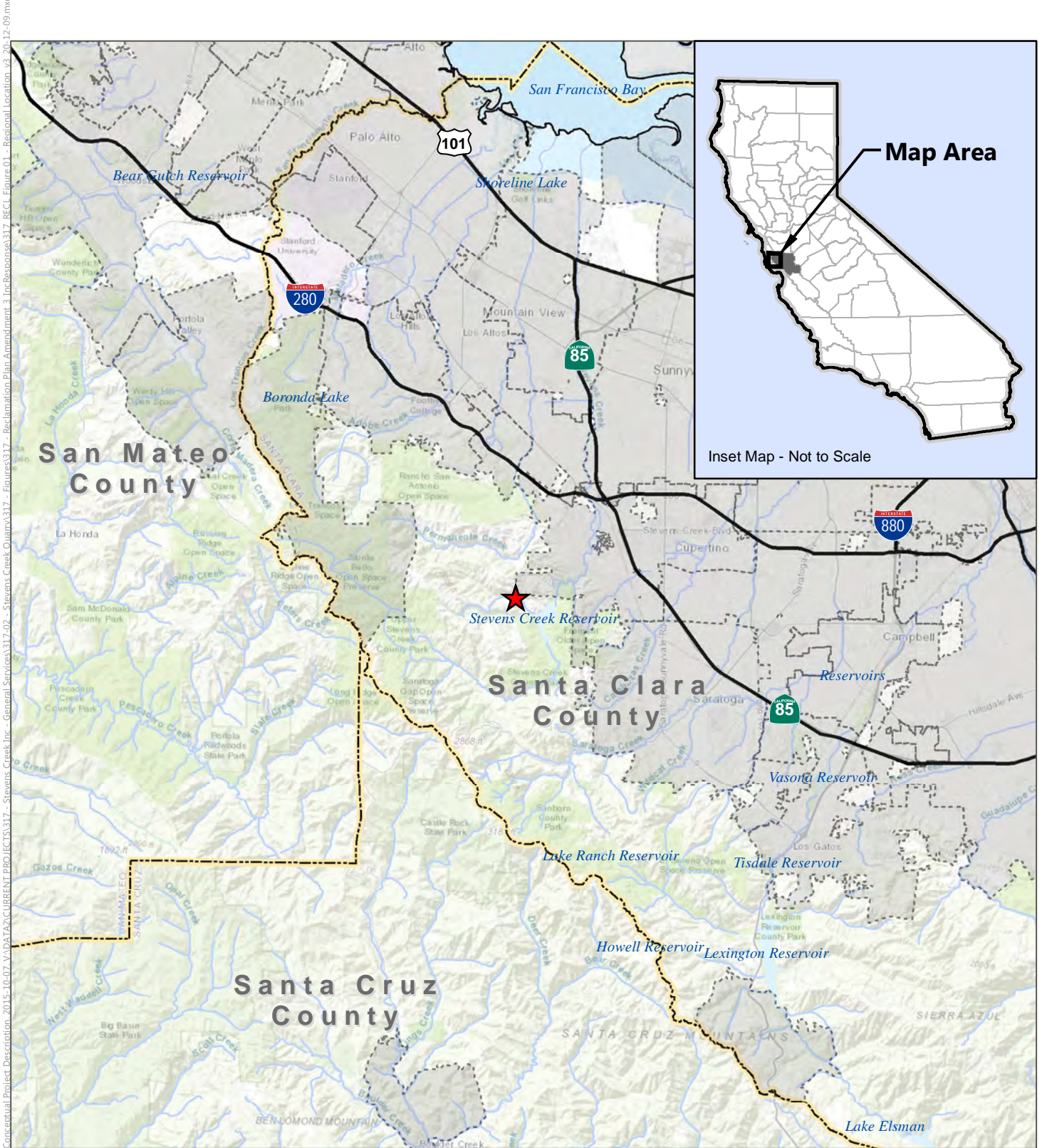


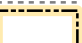
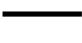

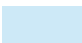


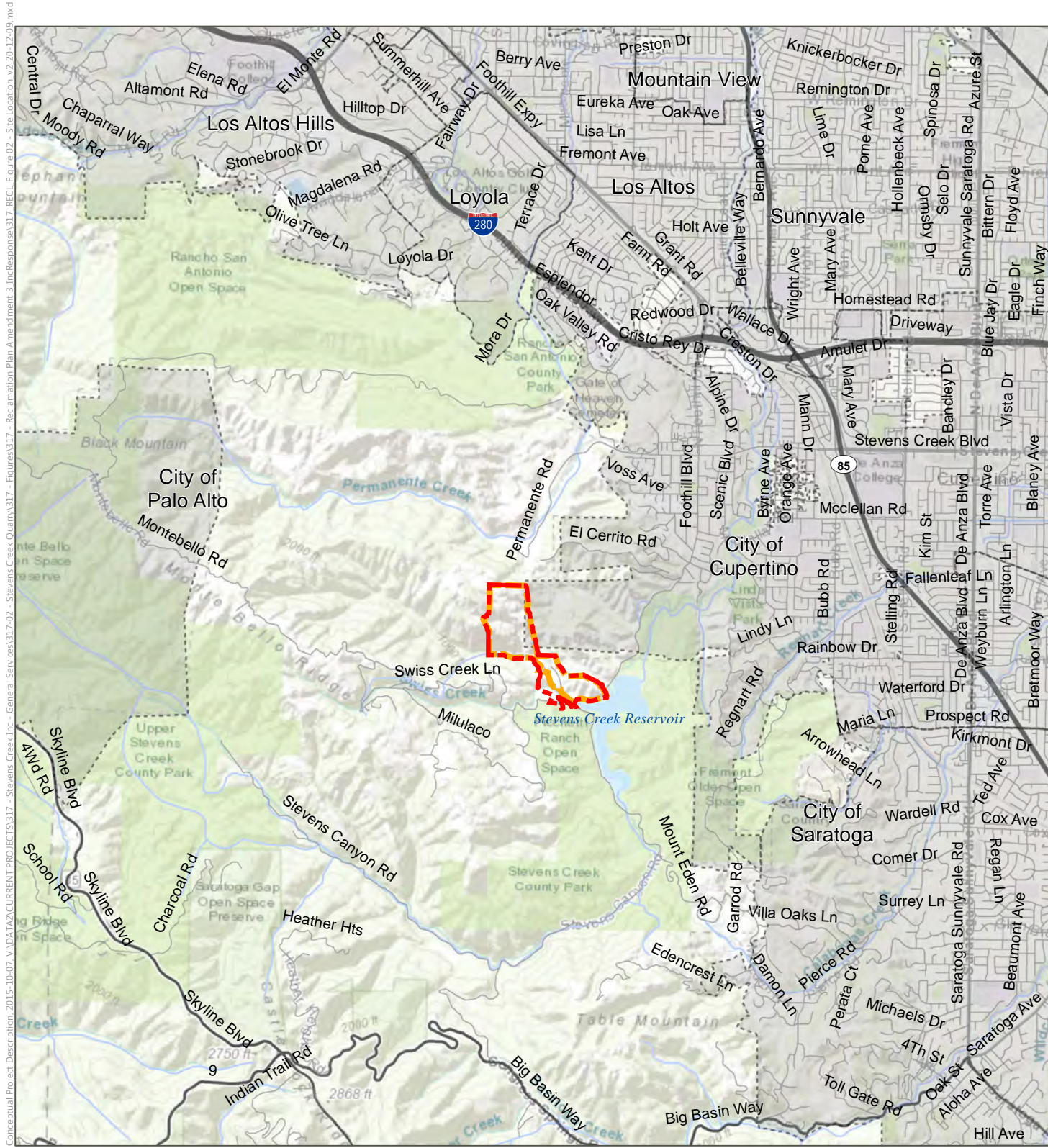
FIGURES



SOURCE: ESRI World Shaded Relief accessed Sept. 2020, ESRI World Topographic Map accessed Sept. 2020; ESRI World Streetmap, 2009; compiled by Benchmark Resources in 2020

NOTES: This figure was prepared for land use planning and informational purposes only. The info shown and its accuracy are relative of the date the data was accessed or produced.

-  Site Location
-  City Boundary
-  County Boundary
-  Major Highway
-  Waterway
-  Water Body

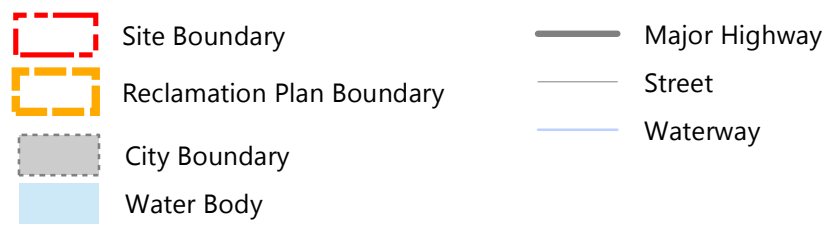


Conceptual Project Description, 2015-10-07, \\\DATA\CURRENT PROJECTS\317 - Stevens Creek Inc. - General Services\317-02 - Stevens Creek Quarry\317 - Figures\317 - Reclamation Plan Amendment 3 - Inc-Response\317 - Site Location v2 20-12-09.mxd

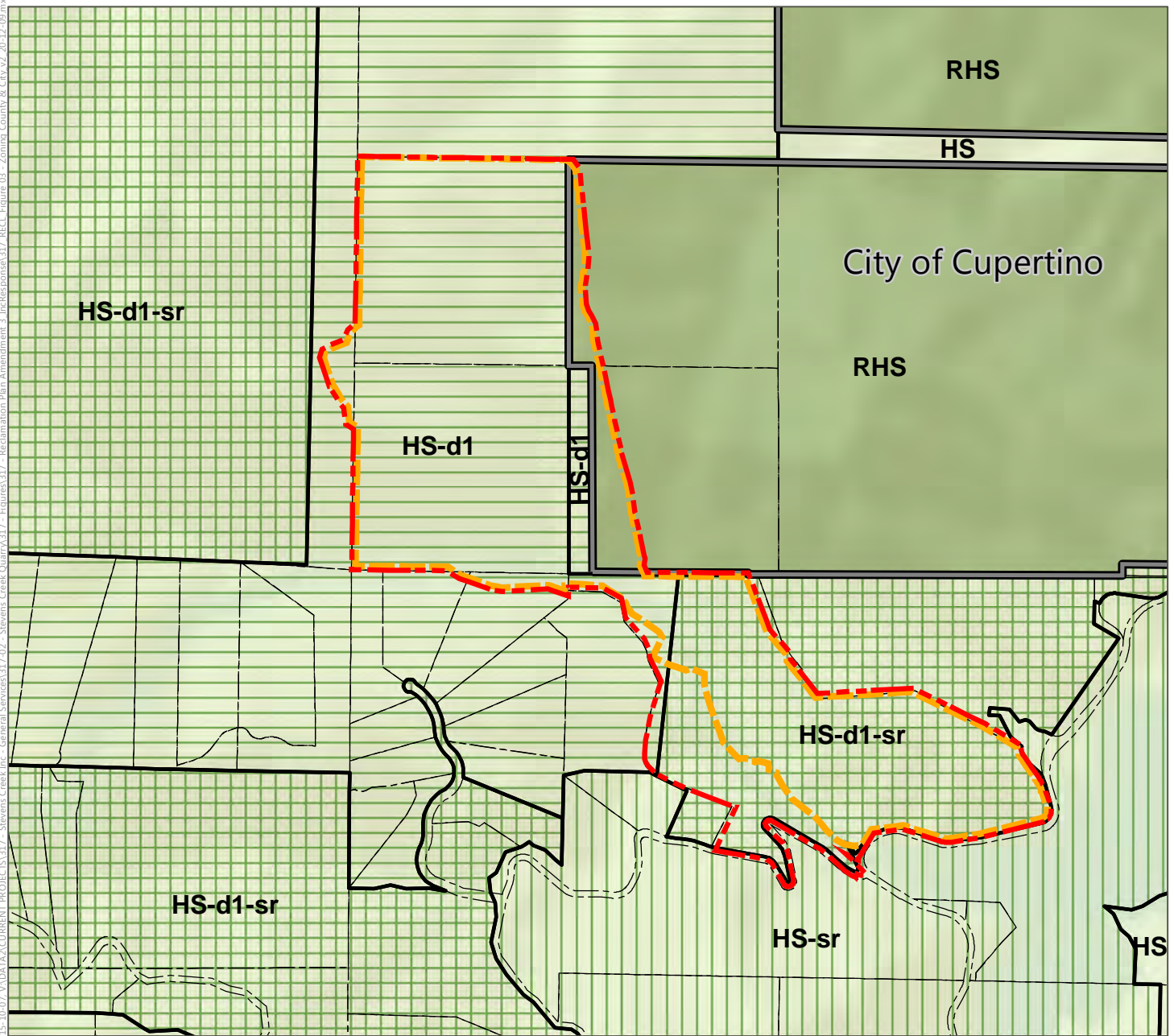
SOURCE: ESRI World Shaded Relief accessed Sept. 2020,
 ESRI World Topographic Map accessed Sept. 2020; ESRI
 World Streetmap, 2009; adapted by Benchmark Resources
 in 2020

NOTES:

1. Property boundary for illustrative purposes only.
2. This figure was prepared for land use planning and informational purposes only. The information shown and its accuracy are reflective of the date the data was accessed or produced.



Conceptual Project Description: 2015-10-07_VADATA\CURRENT PROJECT\317 - Stevens Creek Quarry\317 - Figures\317 - Reclamation Plan Amendment 3_ In-Response\317 RECL Figure 03 - Zoning County & City v2_20-12-09.mxd



SOURCE: County Zoning—Santa Clara County Zoning Atlas, pg. 105, updated Aug. 2016; City Zoning—City of Cupertino Zoning Map, prepared by the Community Development Department, updated Sept. 3 2019; Parcels—SCC Assessor’s Dept, SCC Info Services Dept, 2017;ESRI World Shaded Relief accessed Sept. 2020; compiled by Benchmark Resources in 2020

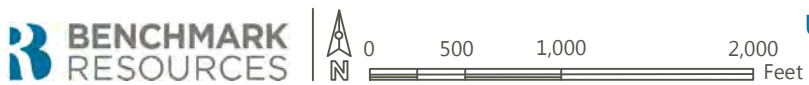
- Site Boundary
- Reclamation Plan Boundary
- Cupertino City Limit
- Parcel Lines

County of Santa Clara Zoning

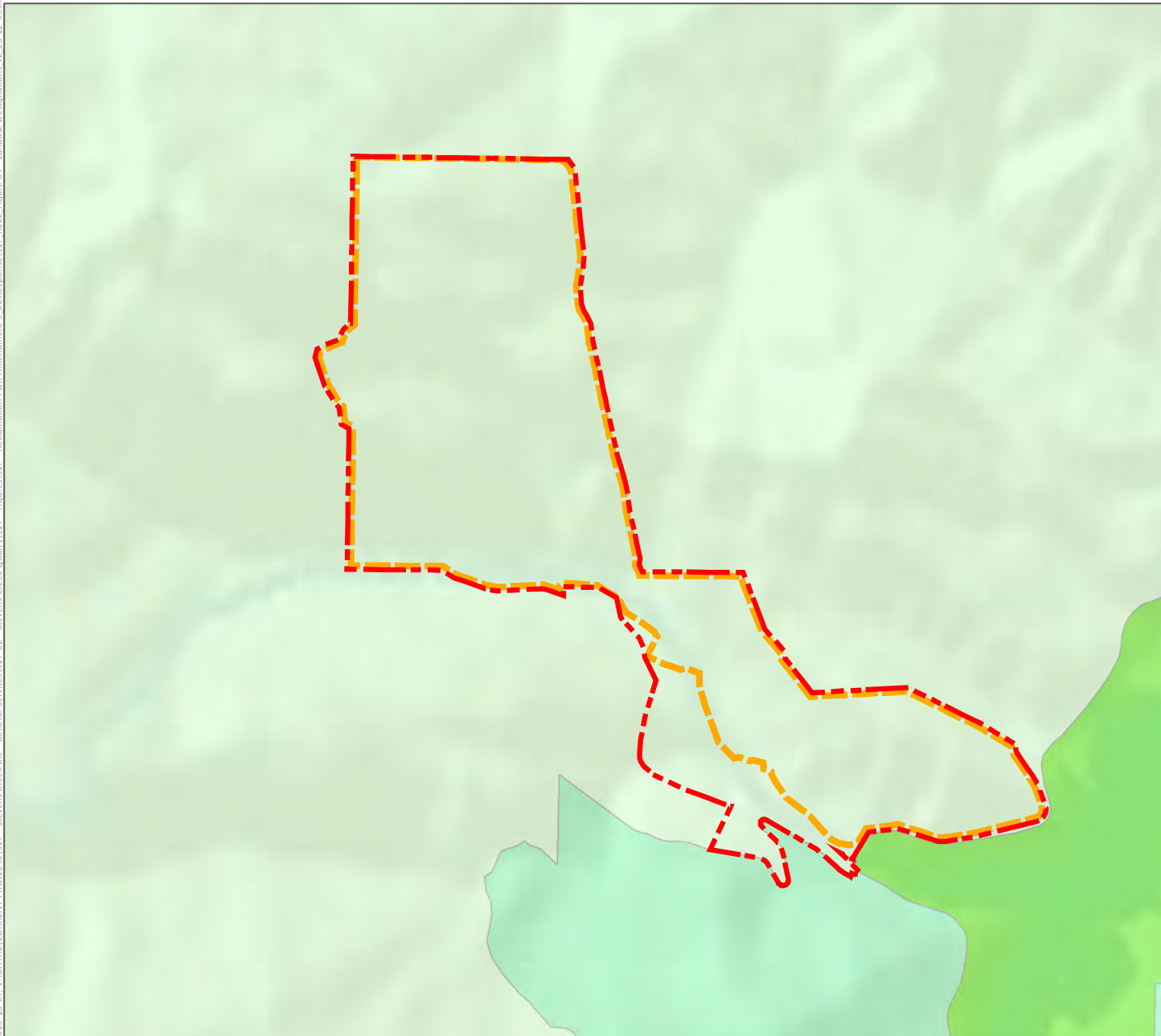
- HS** Hillside
- d1** Combining District: -d1 District (Santa Clara Valley Viewshed)
- sr** Combining District: -sr District (Scenic Roads)

City of Cupertino Zoning



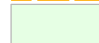
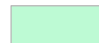
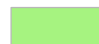
- RHS** Residential Hillside



Conceptual Project Description, 2015-10-07, \\VADATA\CURRENT PROJECTS\317 - Stevens Creek Quarry\317 - Figures\317 - Reclamation Plan Amendment 3_In-Response\317 RECL Figure 04 - Land Use Designations v2_20-12-09.mxd



SOURCE: General Plan Designations—County of Santa Clara Planning Office, 1995 Santa Clara County General Plan, updated Oct. 2016; ESRI World Shaded Relief accessed Sept. 2020; compiled by Benchmark Resources in 2020

-  Site Boundary
-  Reclamation Plan Boundary
-  Hillsides
-  Other Public Open Lands
-  Regional Parks, Existing



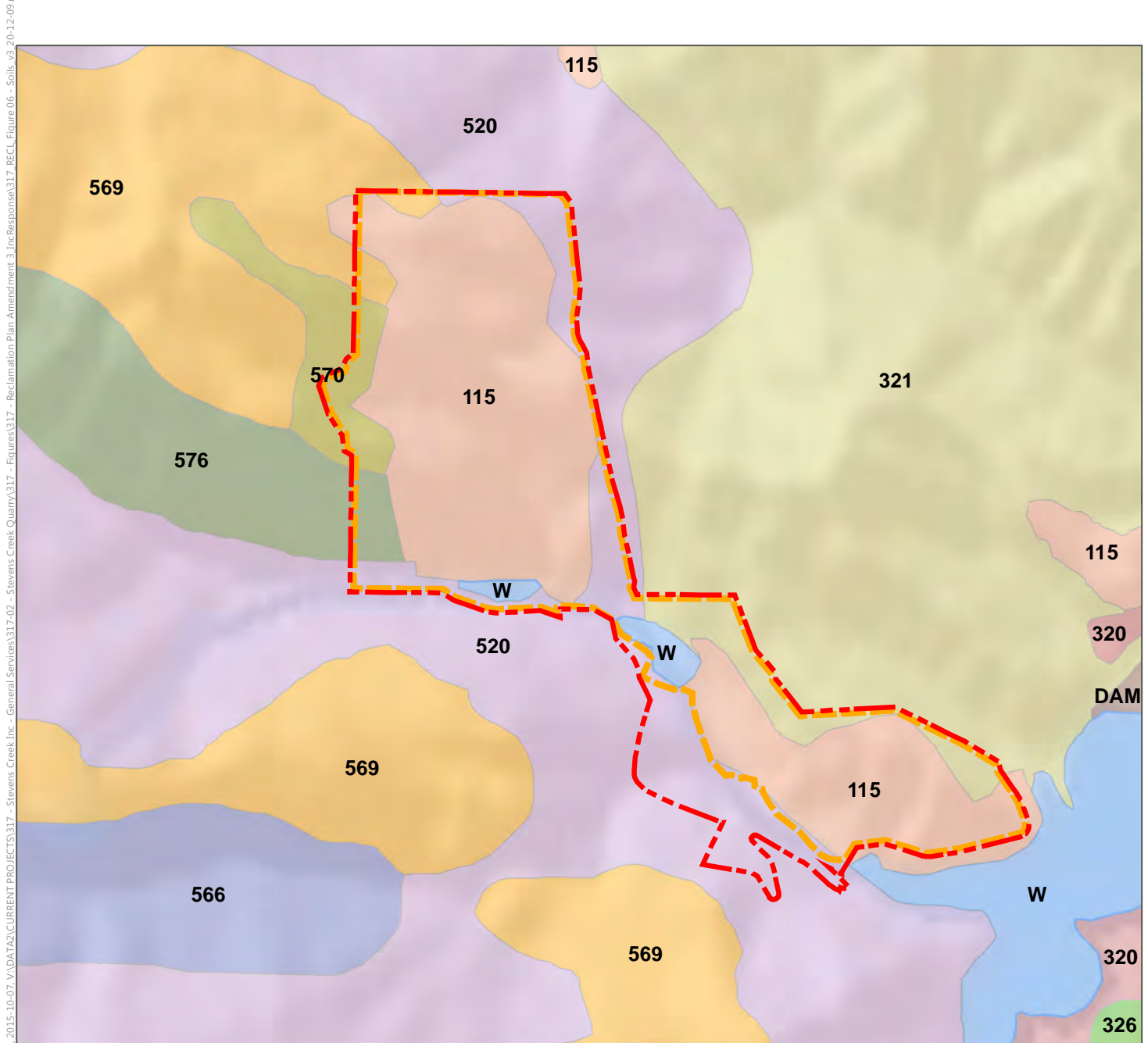
SOURCE: Aerial & Site Parcel Lines—Muir Consulting Inc, flown and surveyed 8-13-2020; Other Parcel Lines—Parcel Quest, accessed December 2020 & Santa Clara Interactive Map, accessed December 2020; compiled by Benchmark Resources in 2021

- NOTES:
- Parcel boundaries, orthophotography and topographic survey data prepared by Muir Consulting, Inc. Aerial survey date: 6-18-2020.
 - See Appendix D for stamped and signed Professional Land Surveyor stamped drawings.

- | | |
|---|--|
| <ul style="list-style-type: none"> --- Site Boundary ±170 acres --- Reclamation Plan Boundary ±147 acres --- Parcel Line & Assessor's Parcel Number --- 100-foot Power Line Easement ① Existing Building/Mining Equipment/Other Facilities (See list below for callouts shown) | <ul style="list-style-type: none"> ■ Porta Potty Location ▲ Diesel Fuel Storage ▲ Hazardous Material Storage ← 800' → Distance from Loading Point to nearest Parcel Line --- Dirt Road --- Asphalt Road --- Access Road --- Water Border --- Swiss Creek ↑ Cross Section |
|---|--|
-
- | | |
|--|--|
| <ul style="list-style-type: none"> 1. Top Soil Plan 2. Main Office 3. Lower Scale House 4. Recycle Plant 5. Tractor Shop (To Be Removed) 6. Tractor Shop Office (To Be Removed) 7. Truck Shop | <ul style="list-style-type: none"> 8. Maintenance Shop (To Be Removed) 9. Upper Scale 10. Maintenance Shop Office (To Be Removed) 11. Rock Plant 12. Sand Plant 13. Radio Tower (To Be Removed) 14. Equipment Storage 15. BSI Shop (To Be Removed) |
|--|--|

Existing Conditions Aerial Photograph
 STEVENS CREEK QUARRY
 USE PERMIT & RECLAMATION PLAN AMENDMENT
 Figure 5

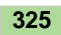

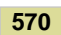
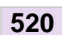

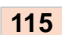

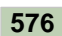
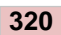
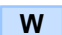
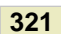
\A\DATA\CURRENT PROJECTS\317 - Stevens Creek Inc - General Services\317.02 - Stevens Creek Quarry\317 - Figures



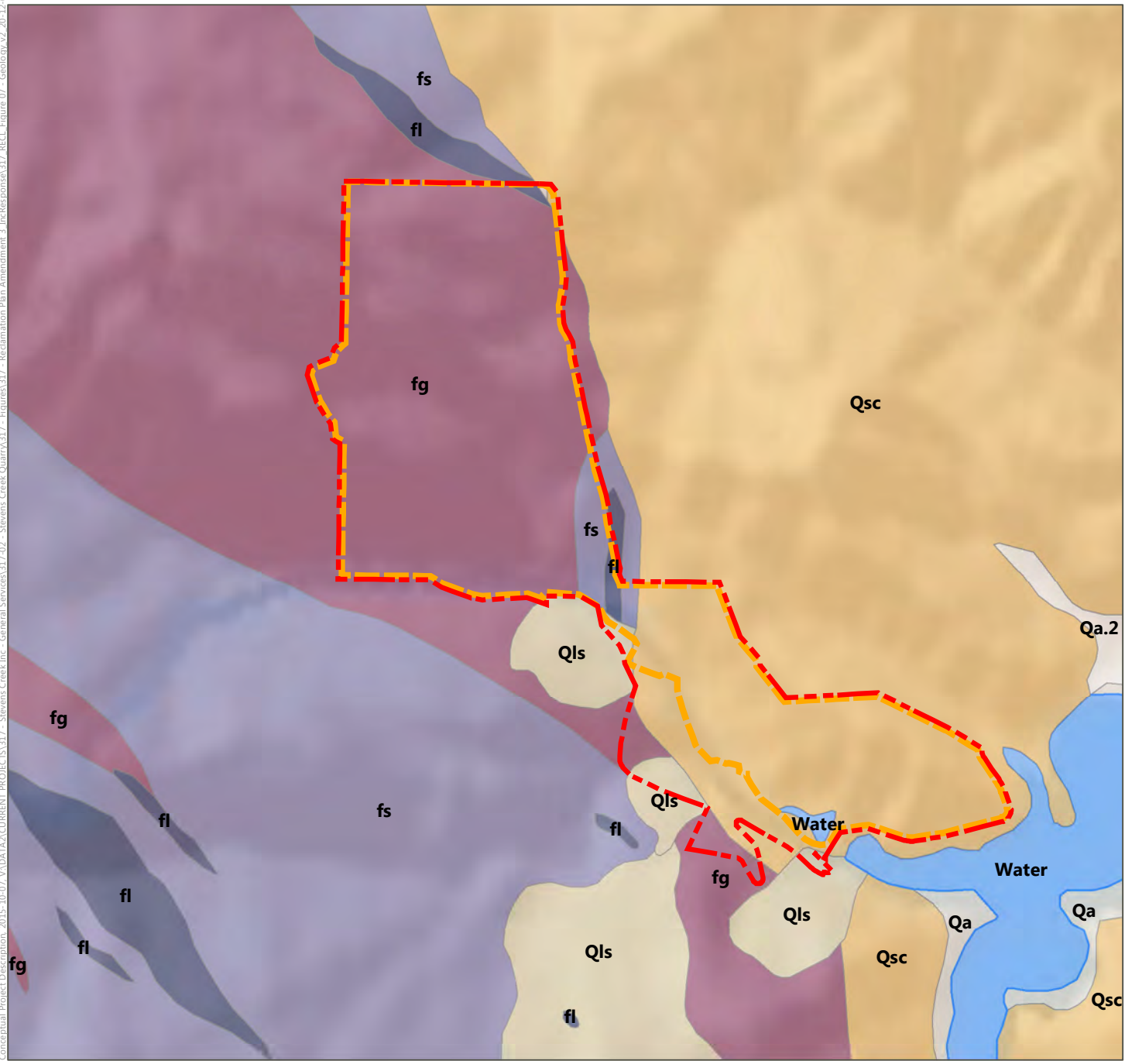
SOURCE: ESRI World Shaded Relief accessed Sept. 2020, U.S. Department of Agriculture Natural Resources Conservation Service Web Soils Survey, accessed Sept. 2020; adapted by Benchmark Resources in 2020

 Site Boundary  Reclamation Plan Boundary

Map Units

- | | |
|---|---|
|  325 Airship-Minlum complex, 40 to 65 percent slopes |  566 Mouser-Katykat-Sanikara complex, 50 to 75 percent slopes |
|  570 Footpath-Mouser complex, 50 to 75 percent slopes |  520 Mouser-Maymen complex, 30 to 75 percent slopes |
|  569 Katykat-Sanikara complex, 8 to 30 percent slopes |  115 Pits, mine |
|  DAM Large dams |  576 Sanikara-Footpath complex, 30 to 75 percent slopes |
|  320 Literr-Merbeth complex, 15 to 30 percent slopes |  W Water |
|  321 Merbeth-Literr complex, 30 to 65 percent slopes | |

Conceptual Project Description, 2015-10-07, \\VADATA\CURRENT PROJECTS\317 - Stevens Creek Quarry\317 - Figures\317 - Reclamation Plan Amendment_3_1e-Response\317 RECL Figure 07 - Geology_v2_20-12-09.mxd

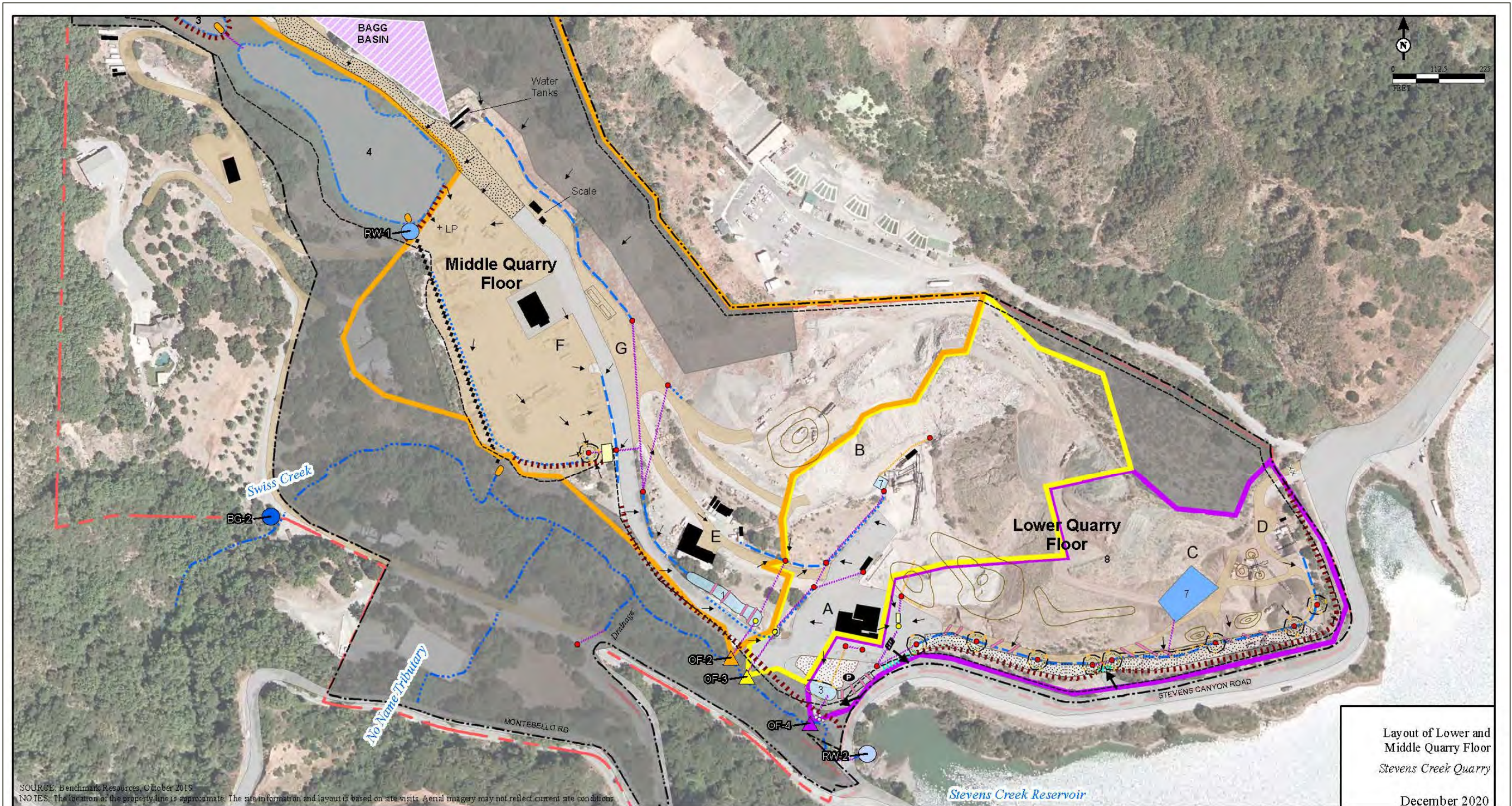


SOURCE: ESRI World Shaded Relief accessed Sept. 2020, National Geologic Map Database, Cupertino & San Jose West Quadrangles, 2007; digitized and compiled by Benchmark Resources in 2020

Site Boundary Reclamation Plan Boundary

Map Units

fg	Franciscan Assemblage, greenstone	Qsc	Santa Clara Formation/Nonmarine Sedimentary Rocks
fl	Franciscan Assemblage, limestone	Qa	Surficial Sediments
fs	Franciscan Assemblage, sandstone	Qa.2	Surficial Sediments, younger stream alluvium
Qls	Landslide Debris	Water	Water

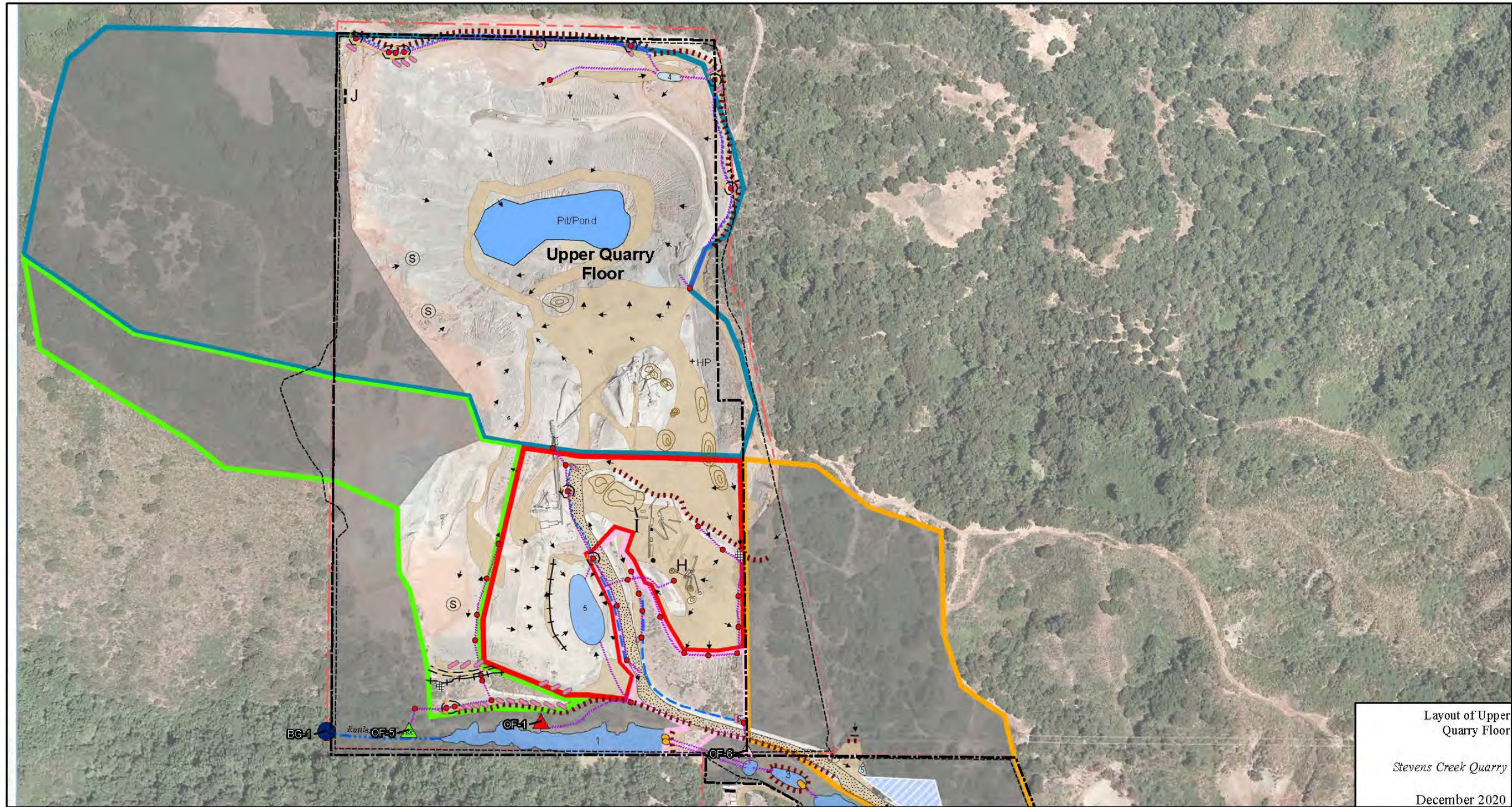


Layout of Lower and Middle Quarry Floor
Stevens Creek Quarry
December 2020

SOURCE: Benchmark Resources, October 2019
NOTES: The location of the property line is approximate. The site information and layout is based on site visits. Aerial imagery may not reflect current site conditions.

LEGEND									
A	Office, Scale House, Scale	Property Line	Unpaved Road	Creek	Sediment Trap and ID Number	Metal Stormwater Tank	French Drain	Drainage Areas	Monitoring Locations
B	Recycle Plant	Ingress/Egress	Gravel/Rock Surface	Drainage Ditch	Former Sediment Pond and Number	Drop Inlet	Grate	2	OF-2
C	Topsoil Plant	Building	Non-Industrial Areas	Concrete Swale	Future Sediment Pond (Approximate Location)	Stand Pipe	Portable Toilet	3	OF-3
D	Garden Waste Recycle Center	Structure	Stockpile	Direction of Flow		Weir	Check Dam	4	OF-4
E	Quarry Maintenance/Storage	Paved Road	Earth Berm			+ Low Point	Coir Wattles		BG-2
F	Voss Trucking	Gravel Road	Paved Berm			◆◆◆ Bypass Pipe	Rock Lining		RW-1
G	Fueling Area and Fuel Tanks	XXXX Gate				— Culvert	4x8 Rock		RW-2

Source: Geosyntech (December 2020)



Layout of Upper
Quarry Floor
Stevens Creek Quarry
December 2020

LEGEND

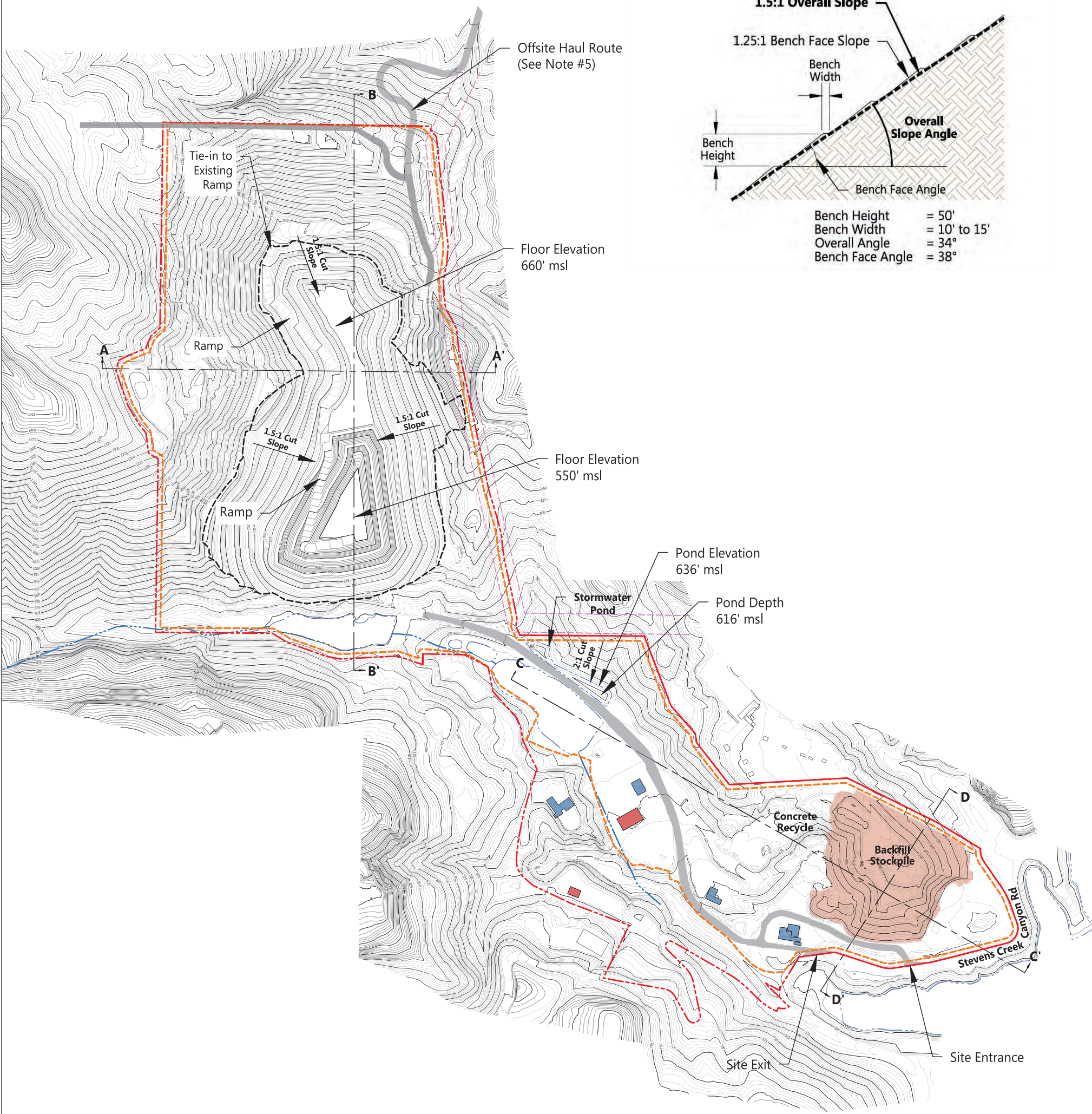
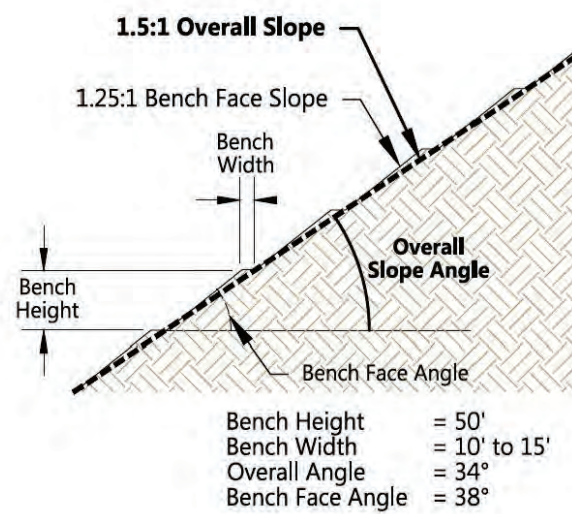
H Sand Plant	■ Building Drainage Ditch	● Drop Inlet	⊥ Silt Fence	Drainage Areas	Monitoring Locations
I Rock Plant	□ Structure	— Concrete Swale	+ High Point	▨ Rock Dissipator	1	▲ OF-1
J Radio Tower	■ Unpaved Road	← Direction of Flow	○ Culvert	▩ Gravel Road	2	▲ OF-5
▭ Property Line	■ Non-Industrial Areas	■ Sediment Pond and ID Number	⊙ Spring	— Check Dam	5	▲ OF-6
--- Mining Limit Line	⊕ Stockpile	■ Sediment Trap and ID Number	— Coir Wattles	— Earth Berm	6	● BG-1
		■ Pit/Pond			7 (Pit/Pond)	

SOURCE: Benchmark Resources, October 2019
 NOTES: The location of the property line is approximate. The site information and layout is based on site visits. Aerial imagery may not reflect current site conditions.

Source: Geosyntech (December 2020)

TYPICAL CUT BENCH

(Not to Scale)



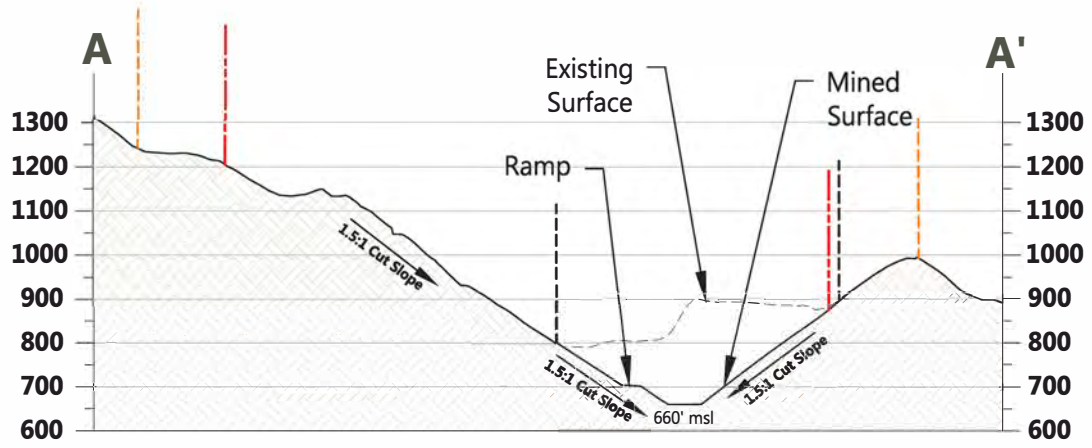
V:\DATA2\CURRENT PROJECTS\317 - Stevens Creek Inc - General Services\317-02 - Stevens Creek Quarry\317 - Figures

SOURCE: Topography—Muir Consulting, Inc., flown 6-18-2020; mine plan compiled by Benchmark Resources in 2021

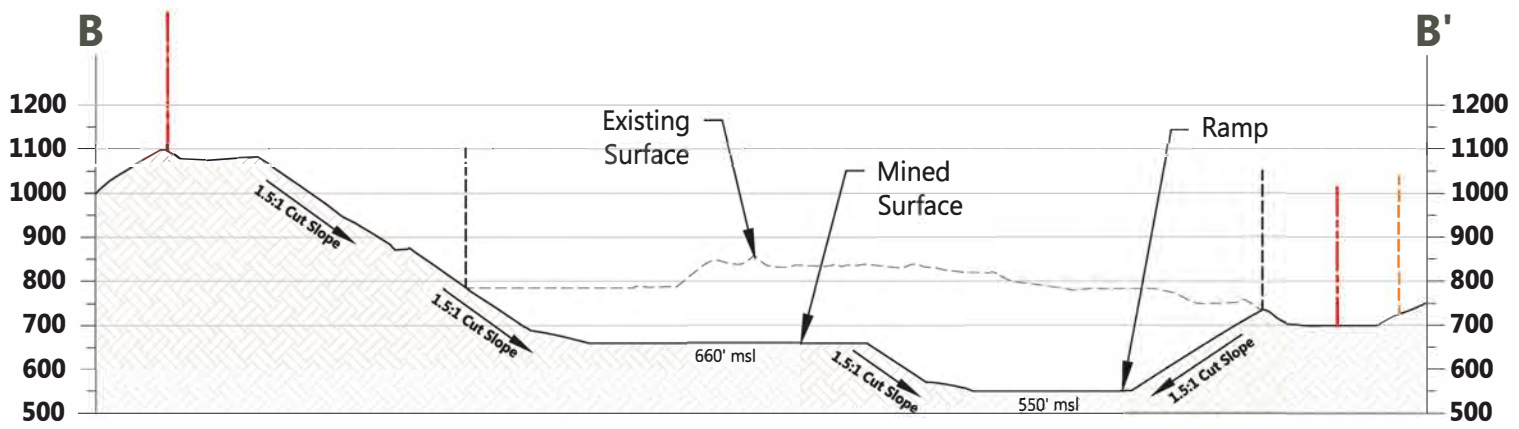
- NOTES:
- Contour intervals: 5'-minor; 25'-major. Elevations shown in mean sea level (msl).
 - Slope angles indicated are overall; see "Typical Cut Bench" for details.
 - Top of cut slopes planned at 25' from Parcel Boundary, but would meet County requirements as specified in Sec. c12-558 of the Design Standards.
 - Active slopes may be steeper and have different bench intervals than final reclaimed cut slopes.
 - Planned Mine Cut Slopes: 1.5h:1v.
 - Planned East Wall Cut Slope: 1h:1v.
 - Haul Road Ramp Slope: 10% to 15%. Ramps, access roads, and primary travel routes may vary in location and size throughout operations progression.
 - Off-site "Permanente Rock Plant Haul Road" per Permanente Quarry Amended Reclamation Plan, May 2019.
 - See Sheet 3 for cross sections.
 - Mine and reclamation design based on topography prepared by Muir Consulting, Inc. Aerial survey date: 6-18-2020. See Appendix D for Professional Land Surveyor stamped drawings.
 - Stormwater pond capacity: Approximately 3.9 acre-feet.
 - Mine Plan Reserves: 12.4 million tons.
 - The planned reclamation boundary and mining depth are shown; however, the extent of operations may or may not reach these limits. Total acreage to be disturbed and reclaimed will be within the limits of the reclamation plan boundary. Facilities and configurations within this boundary are approximate. All acreages are approximate and not intended to reflect goals for any particular surface type. Variations are subject to actual mined conditions and will not affect success of post mining land uses.

	Site Boundary	±170 acres		Cross Section
	Reclamation Plan Boundary	±147 acres		Water Border
	Mine Plan Modified Below This Elevation to 550' msl			Swiss Creek
	100-foot Power Line Easement			Existing Building within Site Boundary
	Access Road			Existing Building outside Site Boundary
	Backfill Stockpile Area	±10 acres		Proposed Buildings

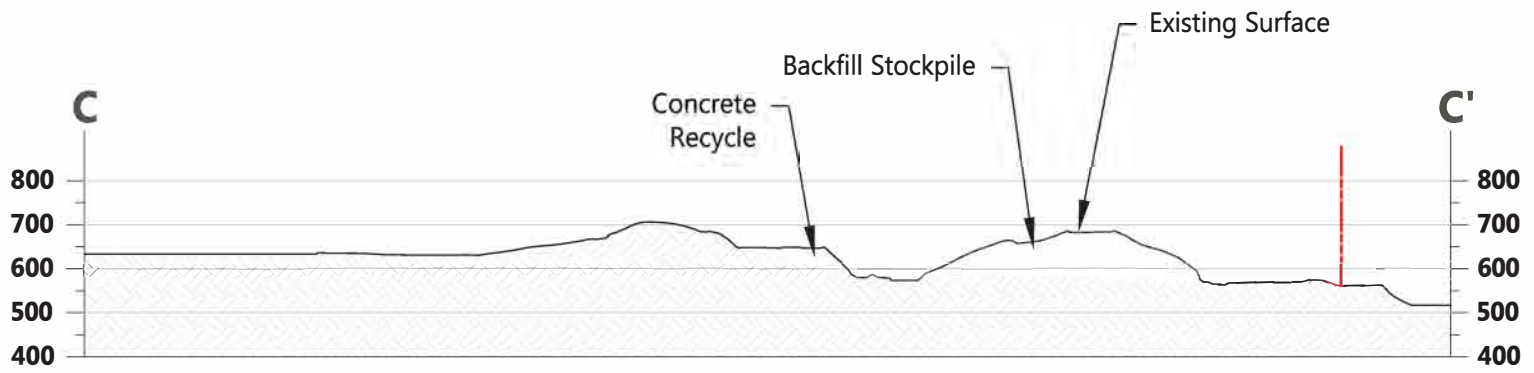




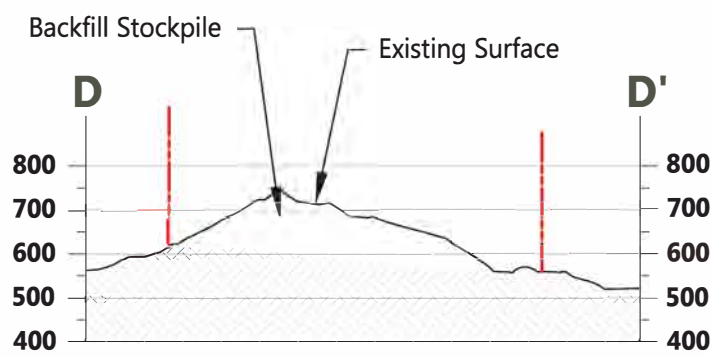
CROSS SECTION A-A'



CROSS SECTION B-B'



CROSS SECTION C-C'



CROSS SECTION D-D'

SOURCE: Topography-Muir Consulting, Inc., flown 6-18-2020; mine plan compiled by Benchmark Resources in 2020

NOTES:

1. Slope angles indicated are overall; see "Typical Cut Slope" on Sheet 2 for details.
2. Active slopes may be steeper and have different bench intervals than final reclaimed cut slopes.
3. Planned Mine Cut Slopes: 1.5h:1v.
4. Planned East Wall Cut Slope: 1h:1v.
5. Haul Road Ramp Slope: 10% to 15%. Ramps, access roads, and primary travel routes may vary in location and size throughout operations progression.
6. East Wall Slope: 1h:1v overall cut slope angle.
7. "msl" = mean sea level.
8. See Sheet 2 for cross section locations shown.
11. Mine and reclamation design based on topography prepared by Muir Consulting, Inc. Aerial survey date: 6-18-2020. See Appendix D for Professional Land Surveyor stamped drawings.
12. Mine Plan Reserves: 12.4 million tons.
13. The planned reclamation boundary and mining depth are shown; however, the extent of operations may or may not reach these limits. Total acreage to be disturbed and reclaimed will be within the limits of the reclamation plan boundary. Facilities and configurations within this boundary are approximate. All acreages are approximate and not intended to reflect goals for any particular surface type. Variations are subject to actual mined conditions and will not affect success of post mining land uses.

--- Site Boundary
 --- Reclamation Plan Boundary






Aerial Image Dated June 18, 2020

Internal Circulation, Queuing, and Parking
 STEVENS CREEK QUARRY
 USE PERMIT & RECLAMATION PLAN AMENDMENT
Figure 11a

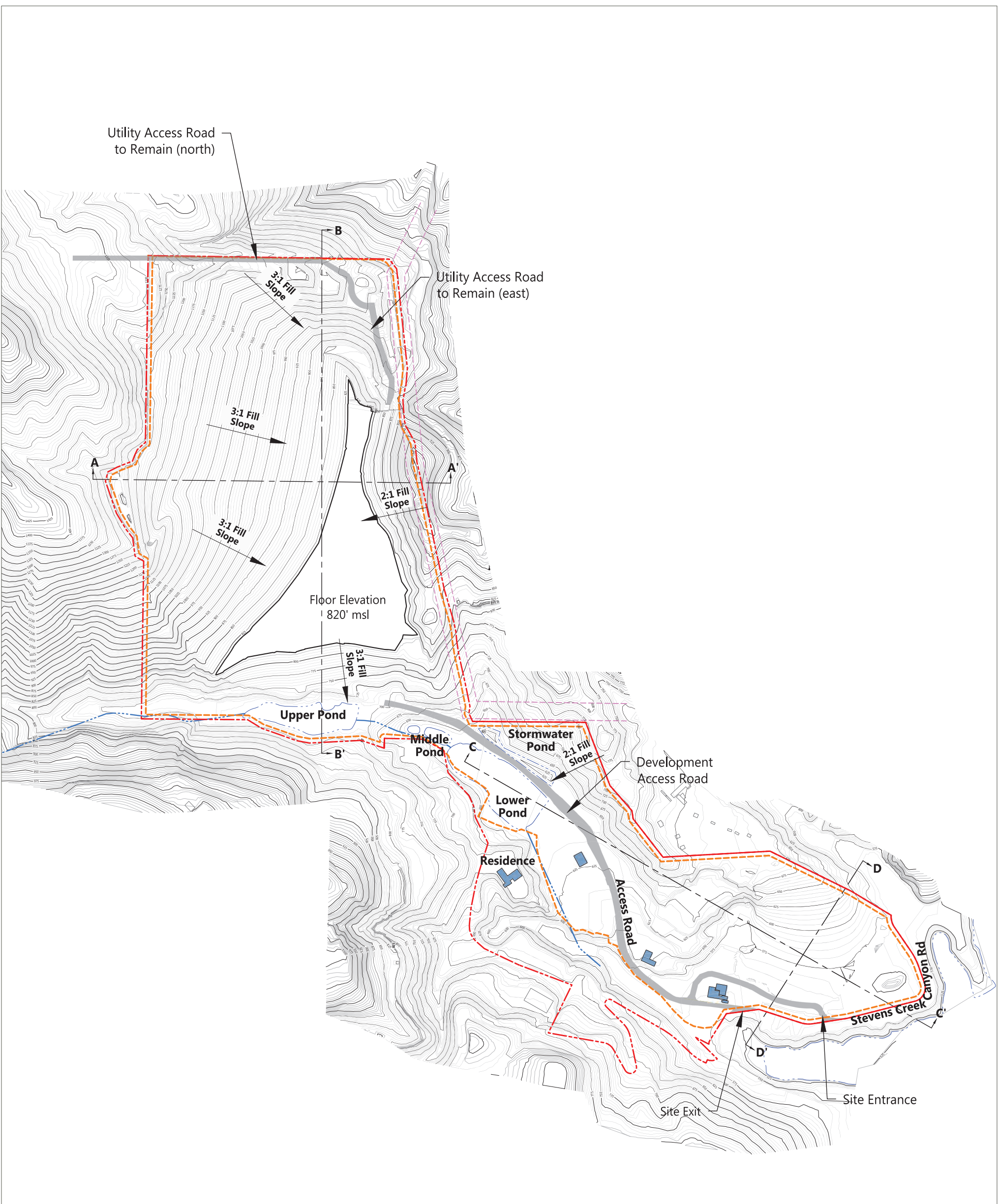


LEGEND

-  Employee Parking
-  Customer Queue/Load
-  Circulation Route

Aerial Image Dated June 18, 2020

V:\DATA2\CURRENT PROJECTS\317 - Stevens Creek Inc - General Services\317-02 - Stevens Creek Quarry\317 - Figures

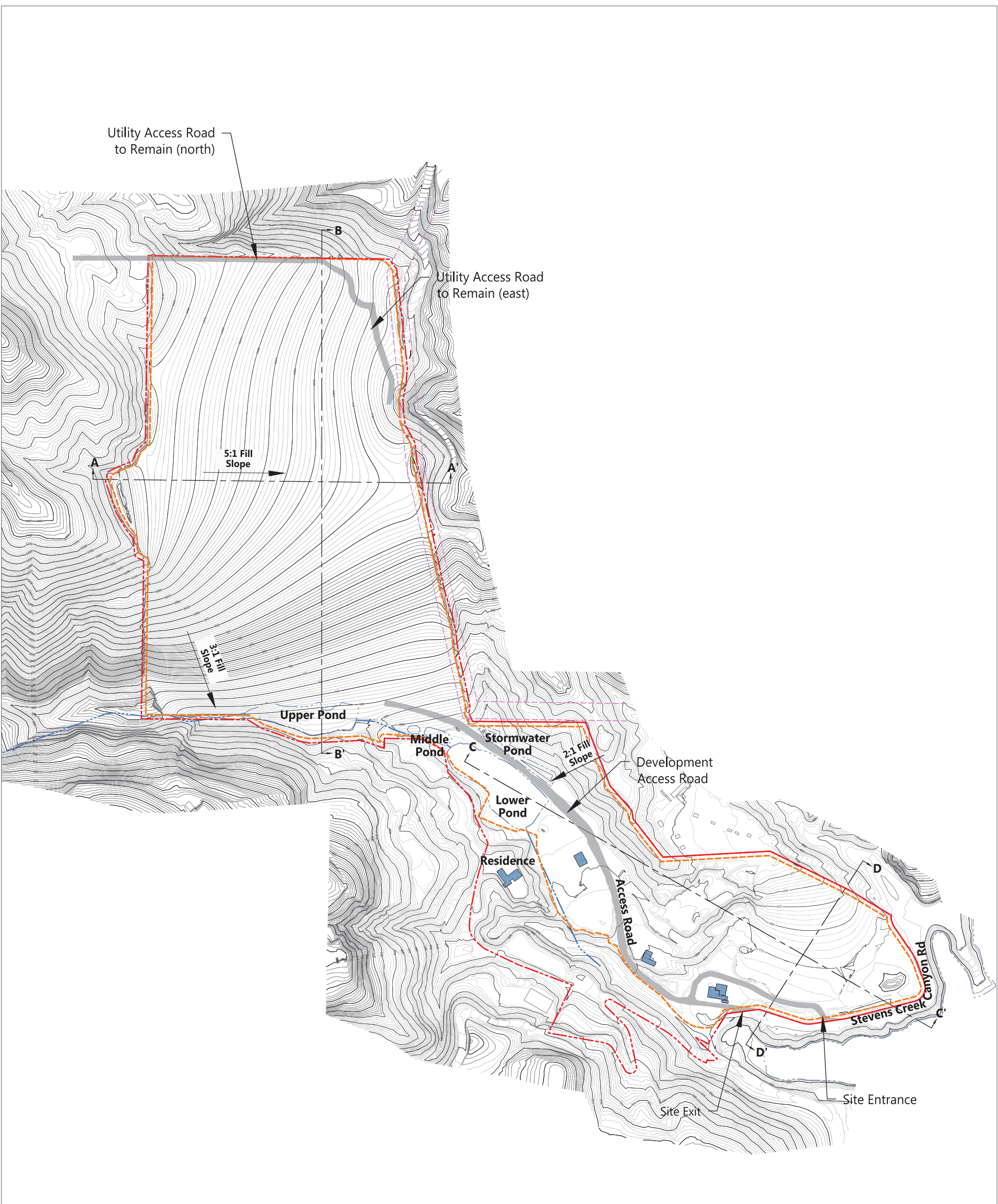


SOURCE: Topography—Muir Consulting, Inc., flown 6-18-2020; mine plan compiled by Benchmark Resources in 2021

- NOTES:
1. Contour intervals: 5'-minor; 25'-major. Elevations shown in mean sea level (msl).
 2. Planned Reclamation Fill Slope: 3h:1v.
 3. Planned East Wall Fill Slope: 2h:1v
 4. "msl" = mean sea level.
 5. See Sheet 6 for cross sections shown.
 6. Mine and reclamation design based on topography prepared by Muir consulting, Inc. Aerial survey date: 6-18-2020. See Appendix D for Professional Land Surveyor stamped drawings.
 7. Stormwater pond capacity: Approximately 3.9 acre-feet.
 8. Fill Volume = ±11,700,000 cubic yards (CY).
 9. The planned reclamation boundary and mining depth are shown; however, the extent of operations may or may not reach these limits. Total acreage to be disturbed and reclaimed will be within the limits of the reclamation plan boundary. Facilities and configurations within this boundary are approximate. All acreages are approximate and not intended to reflect goals for any particular surface type. Variations are subject to actual mined conditions and will not affect success of post mining land uses.


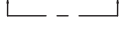







	Site Boundary	±170 acres		Cross Section
	Reclamation Plan Boundary	±147 acres		Water Border
	100-foot Power Line Easement			Swiss Creek
	Access Road			Existing Building within Site Boundary
				Existing Building outside Site Boundary

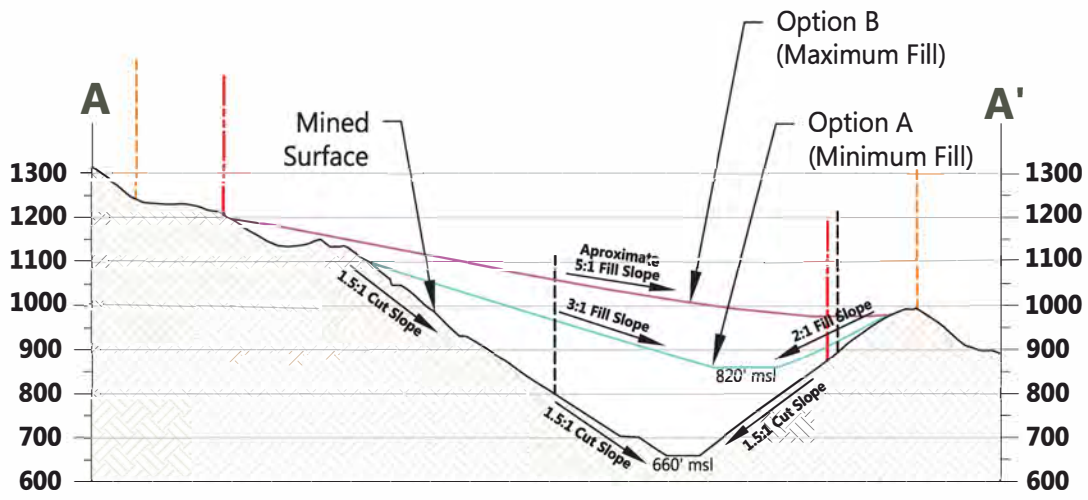
V:\DATA2\CURRENT PROJECTS\317 - Stevens Creek Inc - General Services\317-02 - Stevens Creek Quarry\317 - Figures



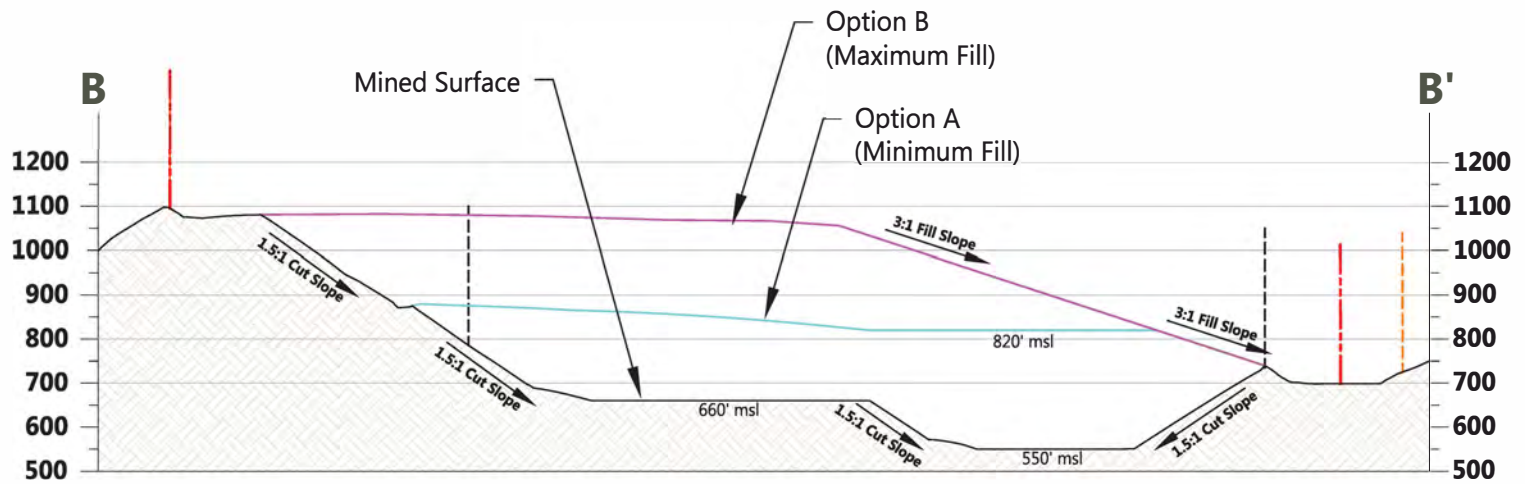
SOURCE: Topography—Muir Consulting, Inc., flown 6-18-2020; mine plan compiled by Benchmark Resources in 2021

- NOTES:
1. Contour intervals: 5'-minor; 25'-major. Elevations shown in mean sea level (msl).
 2. Planned Reclamation Fill Slope: 5h:1v.
 3. "msl" = mean sea level.
 4. See Sheet 6 for cross sections shown.
 5. Mine and reclamation design based on topography prepared by Muir consulting, Inc. Aerial survey date: 6-18-2020. See Appendix D for Professional Land Surveyor stamped drawings.
 6. Stormwater pond capacity: Approximately 3.9 acre-feet.
 7. Fill Volume = ±20,500,000 cubic yards (CY).
 8. The planned reclamation boundary and mining depth are shown; however, the extent of operations may or may not reach these limits. Total acreage to be disturbed and reclaimed will be within the limits of the reclamation plan boundary. Facilities and configurations within this boundary are approximate. All acreages are approximate and not intended to reflect goals for any particular surface type. Variations are subject to actual mined conditions and will not affect success of post mining land uses.

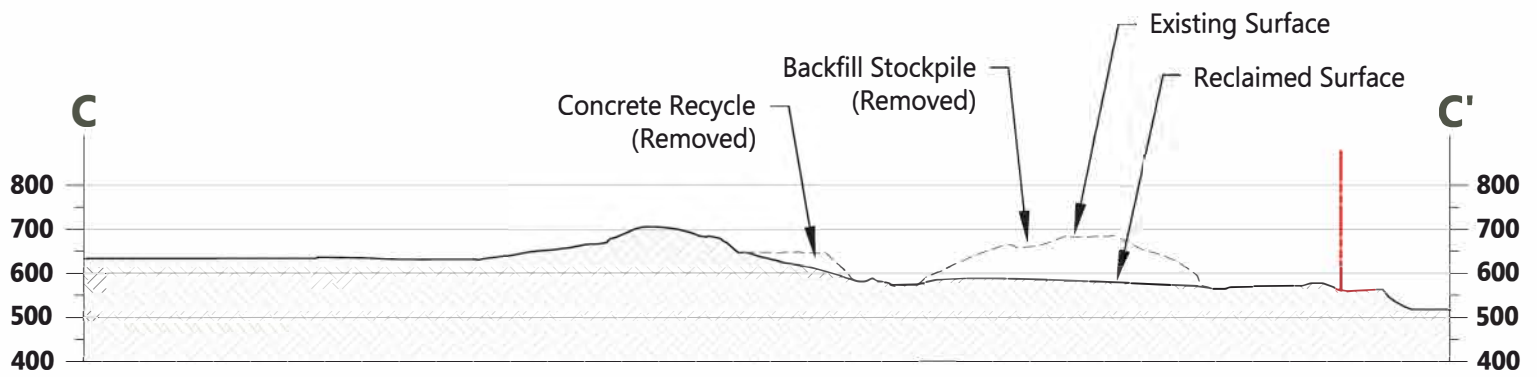
	Site Boundary	±170 acres		Cross Section
	Reclamation Plan Boundary	±147 acres		Water Border
	100-foot Power Line Easement			Swiss Creek
	Access Road			Existing Building within Site Boundary
				Existing Building outside Site Boundary



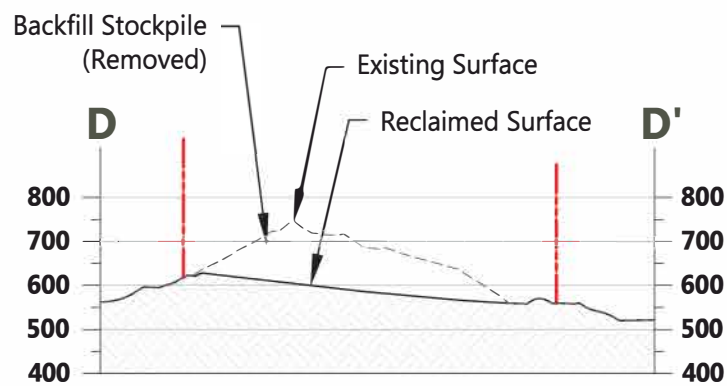
CROSS SECTION A-A'



CROSS SECTION B-B'



CROSS SECTION C-C'



CROSS SECTION D-D'

SOURCE: Topography-Muir Consulting, Inc., flown 6-18-2020; mine plan compiled by Benchmark Resources in 2020

NOTES:

1. Active slopes may be steeper and have different bench intervals than final reclaimed cut slopes.
2. "msl" = mean sea level.
3. Planned Reclamation Fill Slope: 3h:v1 (Option A), 5h:v1 (Option B).
4. See Sheets 4 and 5 for cross section locations shown.
11. Mine and reclamation design based on topography prepared by Muir Consulting, Inc. Aerial survey date: 6-18-2020. See Appendix D for Professional Land Surveyor stamped drawings.
12. Fill Volume Option A = ±11,700,000 cubic yards (CY). Fill Volume Option B = ±20,500,000 cubic yards (CY).
13. The planned reclamation boundary and mining depth are shown; however, the extent of operations may or may not reach these limits. Total acreage to be disturbed and reclaimed will be within the limits of the reclamation plan boundary. Facilities and configurations within this boundary are approximate. All acreages are approximate and not intended to reflect goals for any particular surface type. Variations are subject to actual mined conditions and will not affect success of post mining land uses.

--- Site Boundary
 --- Reclamation Plan Boundary