

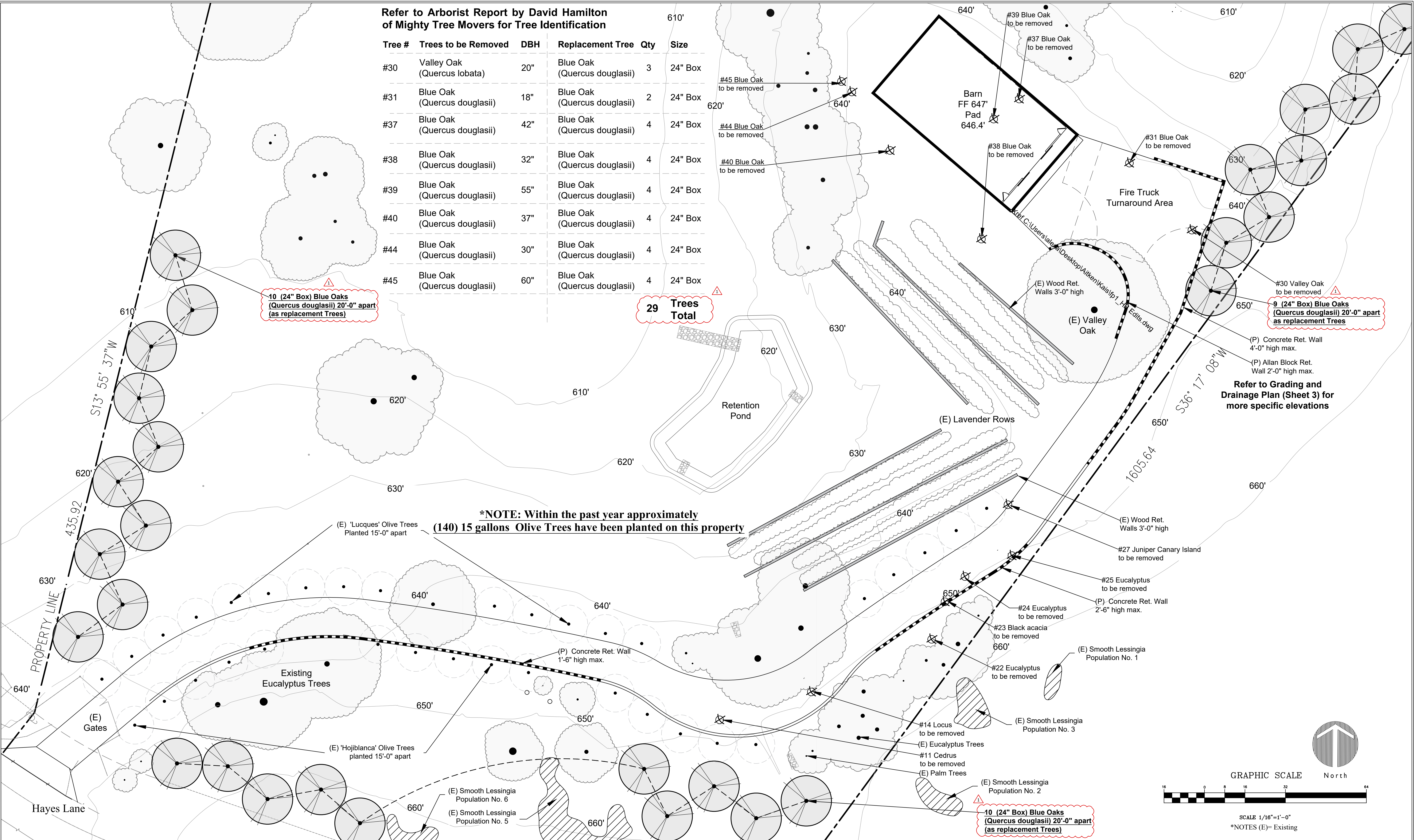
Refer to Arborist Report by David Hamilton
of Mighty Tree Movers for Tree Identification

Tree #	Trees to be Removed	DBH	Replacement Tree	Qty	Size
#30	Valley Oak (Quercus lobata)	20"	Blue Oak (Quercus douglasii)	3	24" Box
#31	Blue Oak (Quercus douglasii)	18"	Blue Oak (Quercus douglasii)	2	24" Box
#37	Blue Oak (Quercus douglasii)	42"	Blue Oak (Quercus douglasii)	4	24" Box
#38	Blue Oak (Quercus douglasii)	32"	Blue Oak (Quercus douglasii)	4	24" Box
#39	Blue Oak (Quercus douglasii)	55"	Blue Oak (Quercus douglasii)	4	24" Box
#40	Blue Oak (Quercus douglasii)	37"	Blue Oak (Quercus douglasii)	4	24" Box
#44	Blue Oak (Quercus douglasii)	30"	Blue Oak (Quercus douglasii)	4	24" Box
#45	Blue Oak (Quercus douglasii)	60"	Blue Oak (Quercus douglasii)	4	24" Box

29 Trees Total

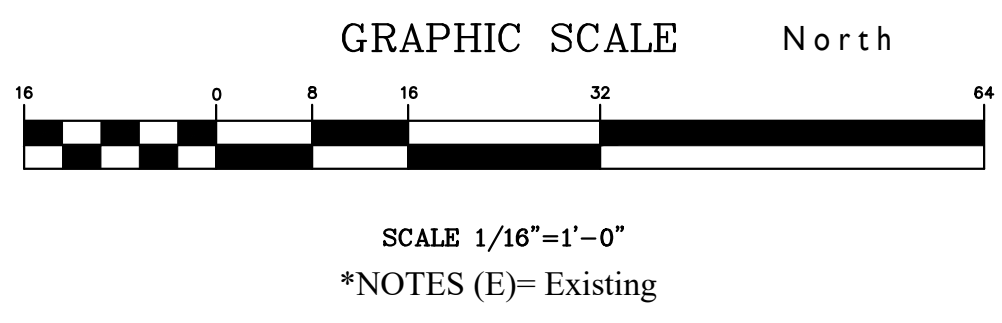
10 (24" Box) Blue Oaks
(Quercus douglasii) 20'-0" apart
(as replacement Trees)

9 (24" Box) Blue Oaks
(Quercus douglasii) 20'-0" apart
(as replacement Trees)



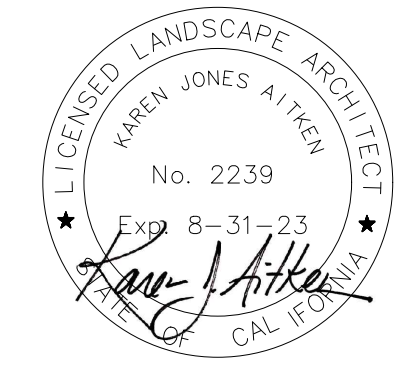
***NOTE: Within the past year approximately (140) 15 gallons Olive Trees have been planted on this property**

Refer to Grading and
Drainage Plan (Sheet 3) for
more specific elevations



KAIS BARN
1975 Hayes Lane, San Martin, CA.
TREE REPLACEMENT PLAN

**AITKEN ASSOCIATES
LANDSCAPE ARCHITECTS**
8262 Rancho Real Gilroy, CA 95020
Calif. Reg. #2239 (408) 842-0245
karen@kaa.design



REVISIONS	BY	DATE	12-19-24
Δ 12/19/24	AD		
		SCALE	1/16" = 1'-0"
		DRAWN	SL # IN
		JOB	KAIS

L-1