



**REQUIRES
VARIANCE:**

STATUS: RE-BRAND

LOCATION: 358 N WHITE ROAD
SAN JOSE, CA 95127

STOREFRONT LENGTH:	22'-6"
MAX SIGN HEIGHT:	8'-3 1/2"
MAX SIGN LENGTH:	18'-9"
MAX # SIGNS:	1 per ftg, 3 max
COLOR VARIANCE:	N/A
PYLON AVAILABLE:	NO
BLADE AVAILABLE:	NO
AWNING AVAILABLE:	NO
BACKER ALLOWED:	

Recommended Illuminated Stack Channel Letters Flush-Mounted to replace existing sign like for like.

SIGN TYPE	SQ FT (CAL)	SQ FT (PRO)	MATERIAL	COLOR
Illuminated Stacked Channel Letters Flush-Mounted		18.08		

MAX ALLOWED	TOTAL
22.5 SF	18.08 SF

****SQ. FT. (CAL):** THE CALCULATED SQ FT OF A SIGN WILL MAXIMIZE ALLOWABLE AREA AND MEET REQUIREMENTS

****SQ FT (PRO):** THE PROPOSED SQ FT OF THE SIGN THE SIGN MANF. IS PROPOSING

****MATERIAL:** MATERIAL OF FACADE THE SIGN IS BEING INSTALLED UPON

****COLOR:** COLOR OF FACADE THAT THE SIGN IS BEING INSTALLED UPON

COVER SHEET
PAGE 2: SITE PLAN
PAGE 3: SIGN 1
PAGE 4: LINE DRAWING OF ELEVATION

PROJECT MANAGER:

WAYNE GEHRING
208.287.1971
Wayne.Gehring@imagenational.com

T-MOBILE PROJECT MANAGER:

ALLISON RAYMOND

T-MOBILE DESIGN MANAGER:

GREG MANGUM

SIGN MANUFACTURER

image national signs 

16265 Star Road, Nampa, Idaho 83687
toll free: 800.592.8058 - tele: 208.345.4020
imagenational.com

APPROVAL STAMP

APPROVED
By Greg at 6:29 pm, May 14, 2020

TBD

LANDLORD CRITERIA:

Will need to verify what is allowed by LL.

LOCAL CODE:

1sf/lf of occupancy frontage, 300sf per frontage

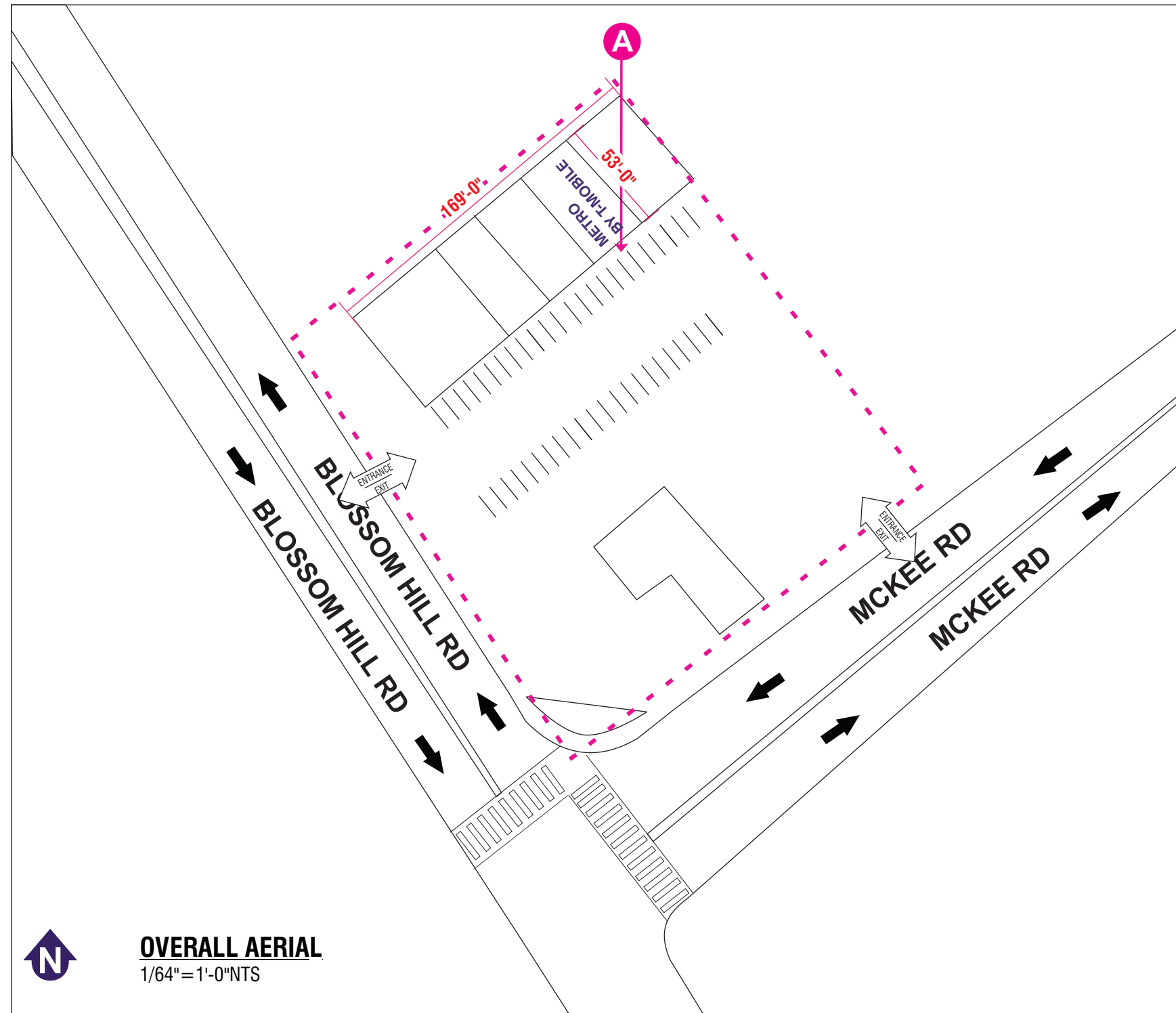
VARIANCE PROCESS:

Varies

REVISIONS:

DATE:	DESCRIPTION:
05/13/20	SIGN BRAND BOOK
27 AUG 2020	R2 UPDATE TO 15" LETTERSET - 22.5 SF MAX
1 SEPT 2020	R3 ADDED LINE DRAWING OF ELEVATION PER CODE
9 SEPT 2020	R4 REPLACED PROPOSED PHOT W/LINE DRAWING

SITE PLAN



SIGNAGE SPECIFICATIONS

A MBTM-CLP-15
Manufacture and Install (1) set of Channel Letters

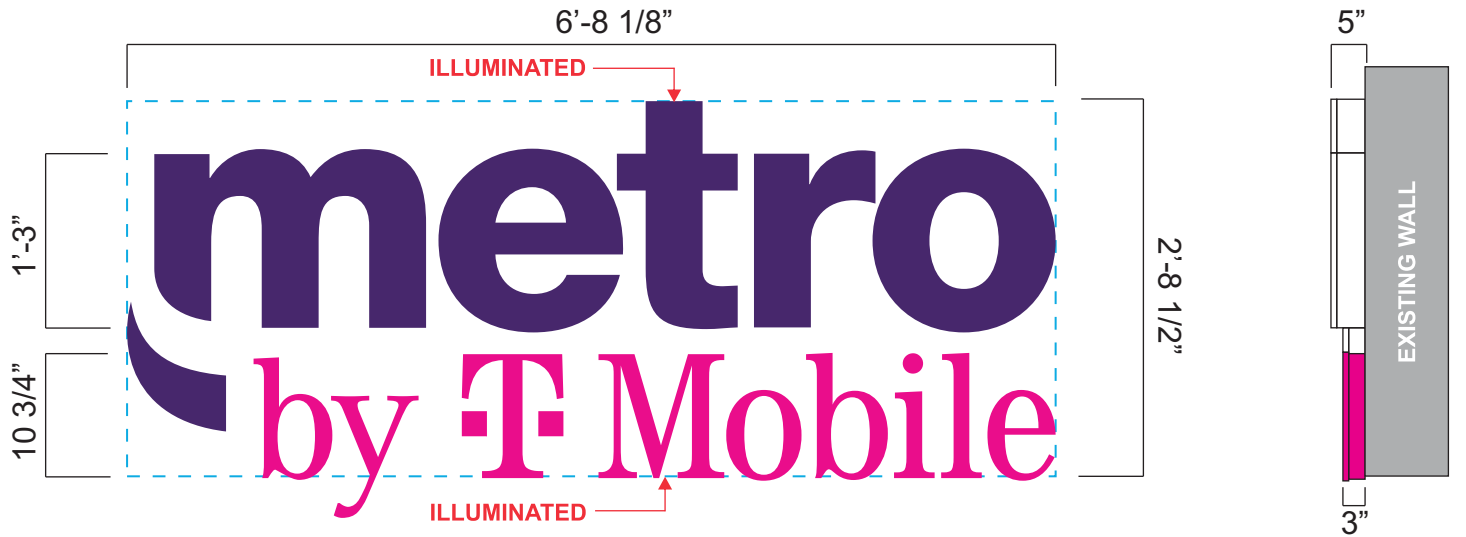
Project Description

The scope of work related to this permit request is in response to T-Mobile's merger with MetroPCS, and the nationwide reimage to Metro by T-Mobile at over 6,500 locations nationwide.

Scope Detail:

REMOVE existing 29" MetroPCS flush-mounted, LED-illuminated channel letters.
INSTALL new 15" Metro by T-Mobile flush-mounted, LED illuminated channel letters.
Existing primary electrical power to be utilized in final connections.

DESIGN SIGN STATUS									
SIGN #	SIGN TYPE	TECHNICALLY VERIFIED		OUTSOURCED COMPONENTS					COMMENTS
		YES	NO	01- Steel	02- Digital	03- Electrical	04- Aluminum	05- Misc	
1	15" STACKED CHL FLUSH MOUNT	X							
2									
3									
4									
51									
6									
7									
8									



ILLUMINATED STACKED CHANNEL LETTERS FLUSH-MOUNTED

SPECIFICATIONS:

MBTM-CLP-15

TOGGLE SWITCH/PHOTOCELL/TIMER IS REQUIRED.

“metro” and “comma”

FACES:..... .118" OPTIX 2406LD DIFFUSER ACRYLIC W/PERFORATED MIRATEC FILM #47902-1 DEEP PURPLE OR ARLON DEEP PURPLE DUAL COLOR FILM #5597-0559048085597
RETURNS:..... .040" x 5.3" ALUMINUM COIL PAINTED WHITE
BACKS:..... .063" ALUMINUM
TRIM CAP:..... 1" WHITE JEWELITE
ILLUMINATION:.. SLOAN PRISM 6500K OR PRINCIPAL LEDS

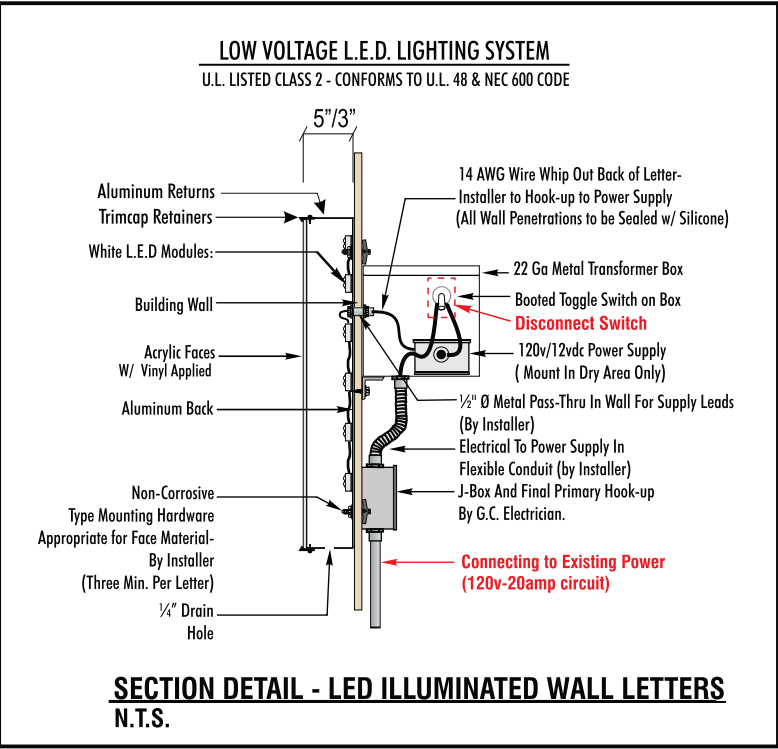
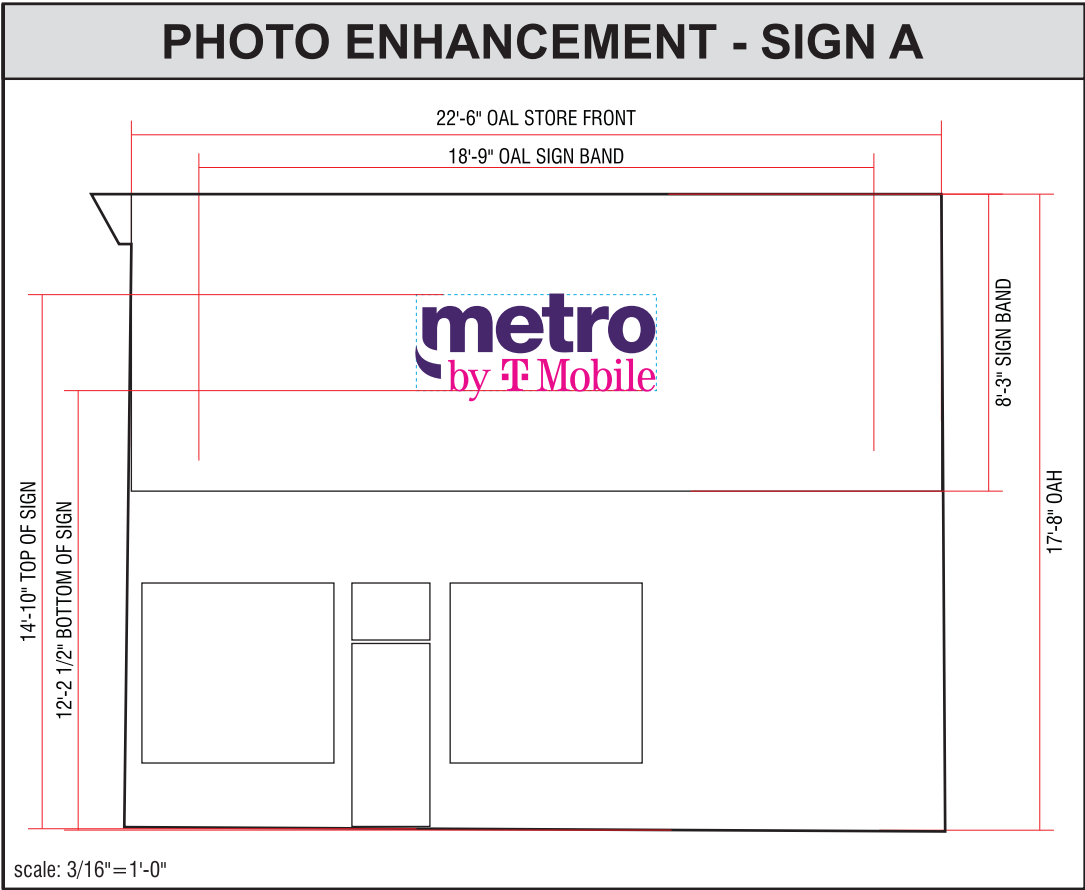
“by T-Mobile”

FACES:..... .118" OPTIX 2406LD DIFFUSER ACRYLIC W/TRANSLUCENT MIRATEC FILM #30532-1 MAGENTA OR ARLON TRANSLUCENT MAGENTA FILM #5450-0557048155450
RETURNS:..... .040" x 3.5" ALUMINUM COIL PAINTED MATTHEWS MP 86055 MAGENTA
BACKS:..... .063" ALUMINUM
TRIM CAP:..... 1" WHITE JEWELITE MATTHEWS MP 86055 MAGENTA
ILLUMINATION:.. SLOAN PRISM 6500K OR PRINCIPAL LEDS

SIGN MODEL	A	B	C	D	E	F	SQ. FT.
MBTM-CLP-15	1'-3"	2'-8 1/2"	6'-8 1/8"	10 3/4"	5"	3"	18.08

COLOR SCHEDULE

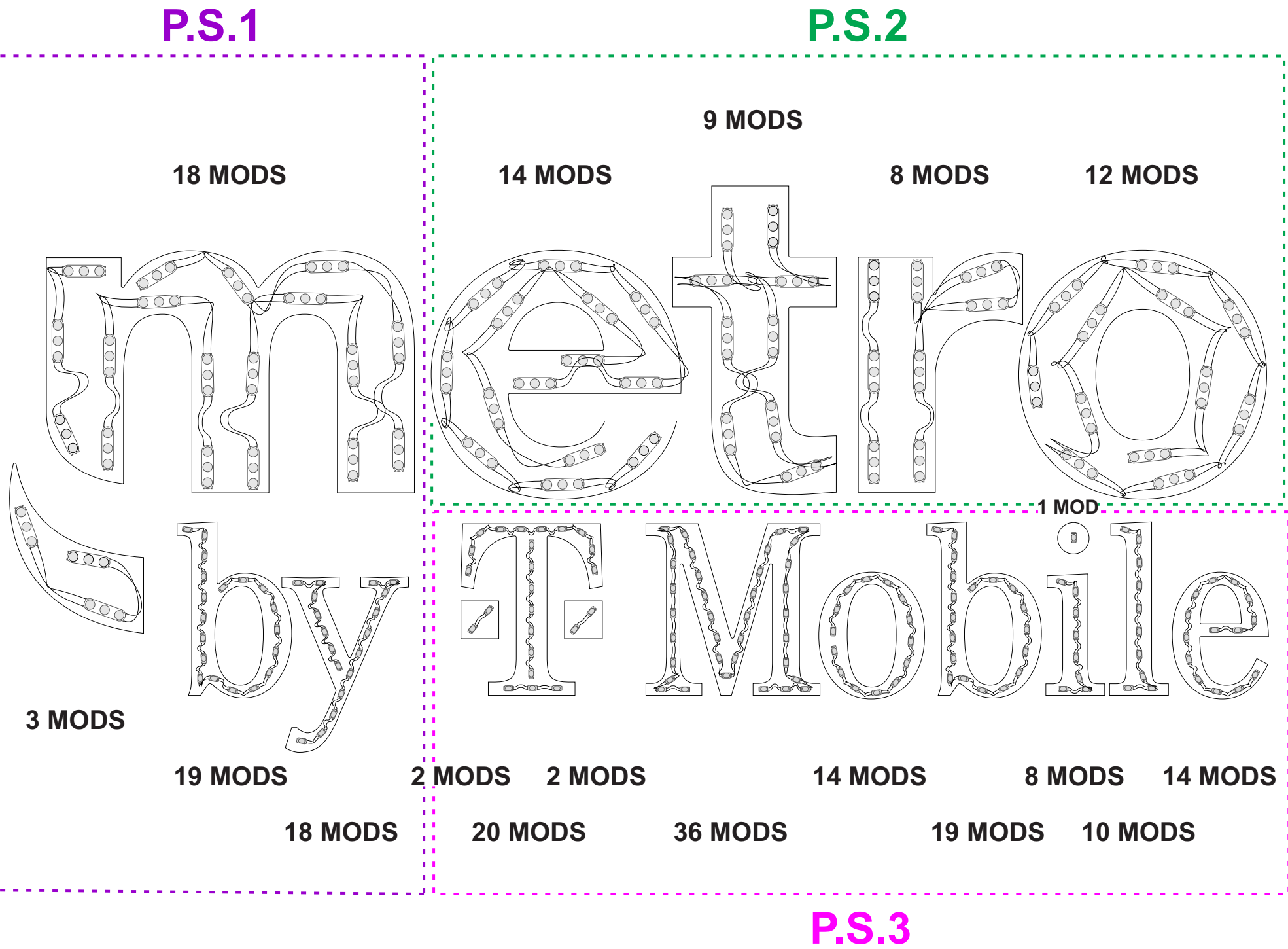
- Paint: White Returns & Trim Cap
- Miratec Dual Color Film #47902-1 Deep Purple Perforated Vinyl or Arlon Deep Purple Dual Color Film #5597 - 0559048085597
- Translucent Miratec Film #30532-1 Magenta Printed on White Vinyl or Arlon Translucent Magenta Film #5450-0557048155450
- Paint: Matthews MP 86055 Magenta (Returns & Trim Cap)



SECTION DETAIL - LED ILLUMINATED WALL LETTERS
N.T.S.

	U.S. & P.R. - All signs conform to UL-48/2161 (labeled accordingly) & must comply with UL-41.1 install procedures. Canada - all signs must be CAS compliant. This sign(s) is intended to be installed in accordance with requirements of article 600 of the National Electrical Code and/or applicable local codes. This includes proper grounding and bonding of the sign.		CLIENT SIGNATURE	DATE	REVISIONS	
				8 SEPT 2020	DATE:	DESCRIPTION:
ADDRESS	PAGE #	APPROVAL DATE	DESIGN	SITE ID #:		
				41823		
358 N White Road San Jose, CA 95127	2		FILE NAME	SO		
				41823_N White Rd & McKee Rd_San Jose_CA-R4		

LED DETAIL
SCALE: 1 1/2" = 1'-0"



PART #	FIND #	DESCRIPTION	QTY.
401-0020	①	Sloan LED Prism 701269-6WSJ1-MB 6500K (64 MODS)	42.5 LF
401-0017	②	Sloan LED Prism Nano 701269-6WNJ1-MB 6500K (163 MODS)	21.5 LF
408-0101	③	2 WIRE 18 GA JACKETED (18 x 8')	144 LF
402-5002	④	Sloan LED 12-60 Power Supply @ .8 amps	3