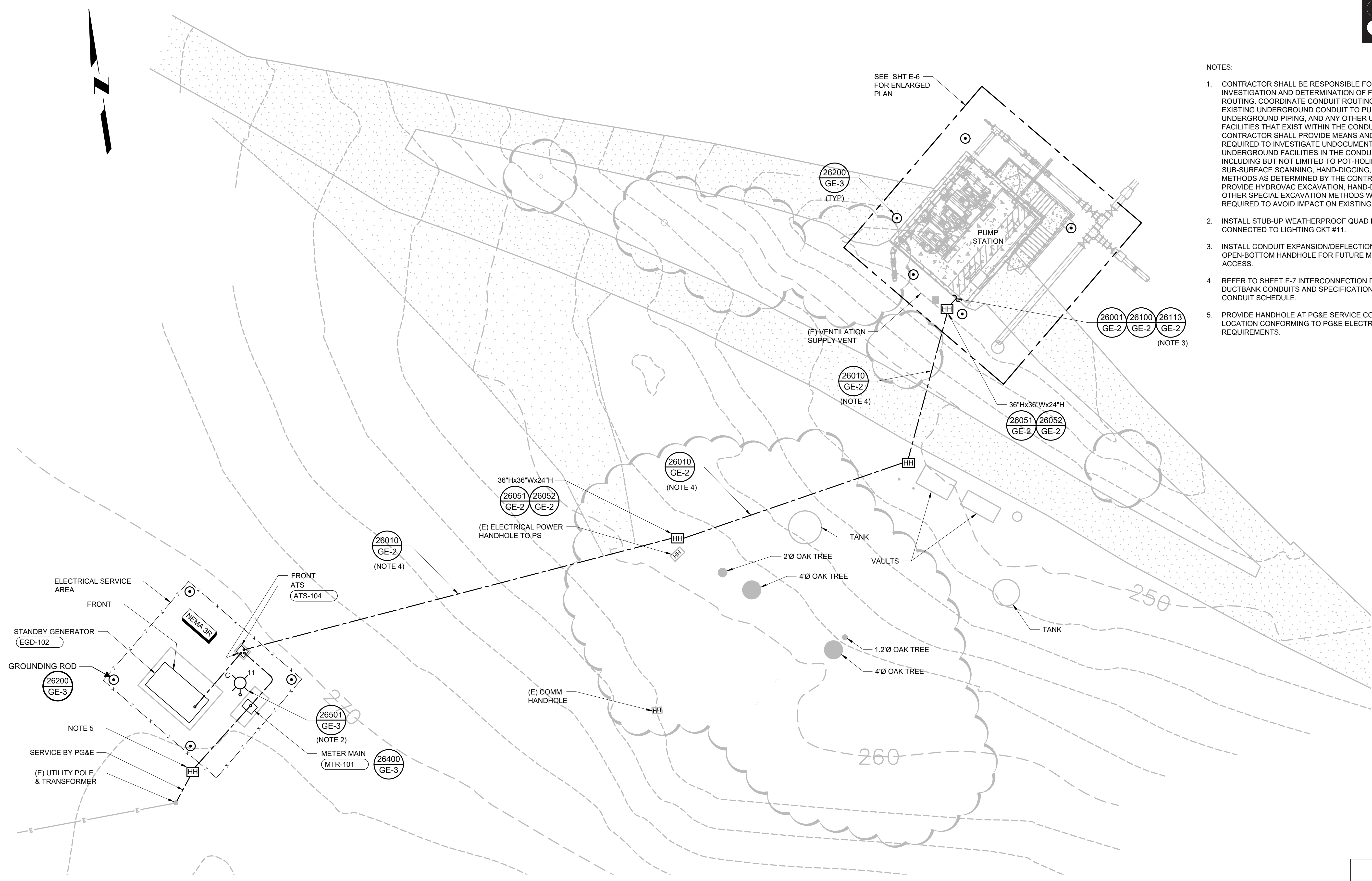
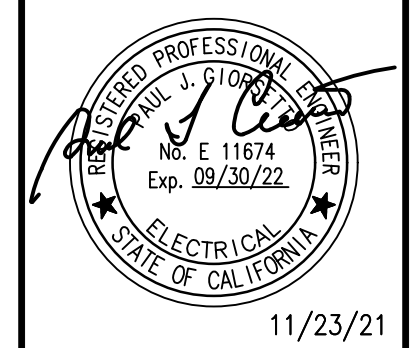


DRAWING NAME: C:\p\drw\TJC and Associates, Inc\Min - Documents\19062 - SFT - Stanford Football PS\19062 - 01 Redesign Sft\19062 - Elec\E-04.dwg
 PLOT DATE: Nov 23, 2021 - 2:26pm PLOTTED BY: Bertue



- NOTES:**
- CONTRACTOR SHALL BE RESPONSIBLE FOR FIELD INVESTIGATION AND DETERMINATION OF FINAL CONDUIT ROUTING. COORDINATE CONDUIT ROUTING WITH EXISTING UNDERGROUND CONDUIT TO PUMP STATION, UNDERGROUND PIPING, AND ANY OTHER UNDERGROUND FACILITIES THAT EXIST WITHIN THE CONDUIT PATH. CONTRACTOR SHALL PROVIDE MEANS AND METHOD AS REQUIRED TO INVESTIGATE UNDOCUMENTED EXISTING UNDERGROUND FACILITIES IN THE CONDUIT PATH, INCLUDING BUT NOT LIMITED TO POT-HOLING, SUB-SURFACE SCANNING, HAND-DIGGING, OR OTHER METHODS AS DETERMINED BY THE CONTRACTOR. PROVIDE HYDROVAC EXCAVATION, HAND-DIGGING, OR OTHER SPECIAL EXCAVATION METHODS WHERE REQUIRED TO AVOID IMPACT ON EXISTING FACILITIES.
 - INSTALL STUB-UP WEATHERPROOF QUAD RECEPTACLE CONNECTED TO LIGHTING CKT #11.
 - INSTALL CONDUIT EXPANSION/DEFLECTION FITTINGS IN OPEN-BOTTOM HANDHOLE FOR FUTURE MAINTENANCE ACCESS.
 - REFER TO SHEET E-7 INTERCONNECTION DIAGRAMS FOR DUCTBANK CONDUITS AND SPECIFICATIONS FOR CONDUIT SCHEDULE.
 - PROVIDE HANDHOLE AT PG&E SERVICE CONNECTION LOCATION CONFORMING TO PG&E ELECTRICAL SERVICE REQUIREMENTS.

NO.	DATE	DESCRIPTION	APPROVED

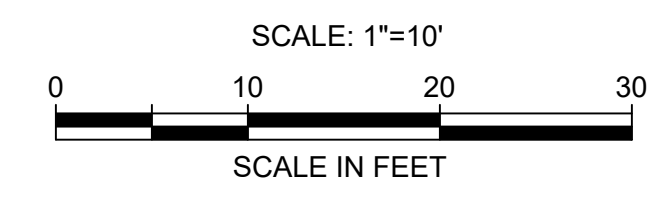


SRT consultants
 792 Bay Street
 San Francisco, CA 94105
 Ph: 415.776.5800
 Fx: 415.776.5200

Stanford University
 315 Bonair Siding, 2nd Floor
 Stanford, CA 94305

**RESERVOIR 1 PUMP STATION
 REHABILITATION PROJECT**
**ELECTRICAL
 SITE PLAN**

SITE PLAN
 SCALE: 1"=10' (NOTE 1)



VERIFY SCALE
 0 1"
 BAR IS ONE INCH ON ORIGINAL DRAWING. IF NOT ONE INCH ON THIS SHEET, ADJUST SCALES ACCORDINGLY.

DATE	NOVEMBER 2021
SCALE	AS SHOWN
DESIGN	E. NAKAMURA
DRAWN	B. VUE
CHECK	P. GIORSETTO
SHEET	28 of 37

E-4