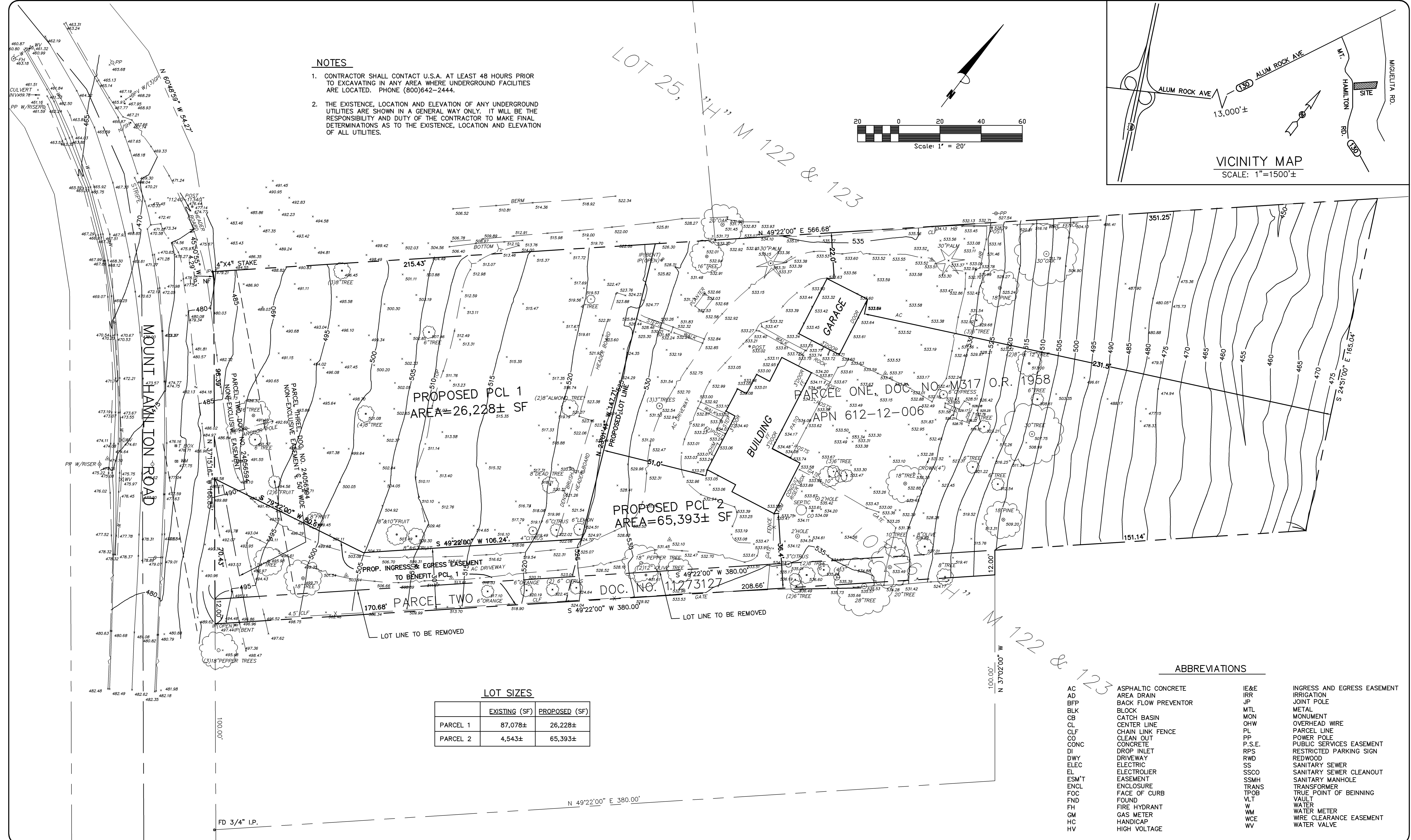
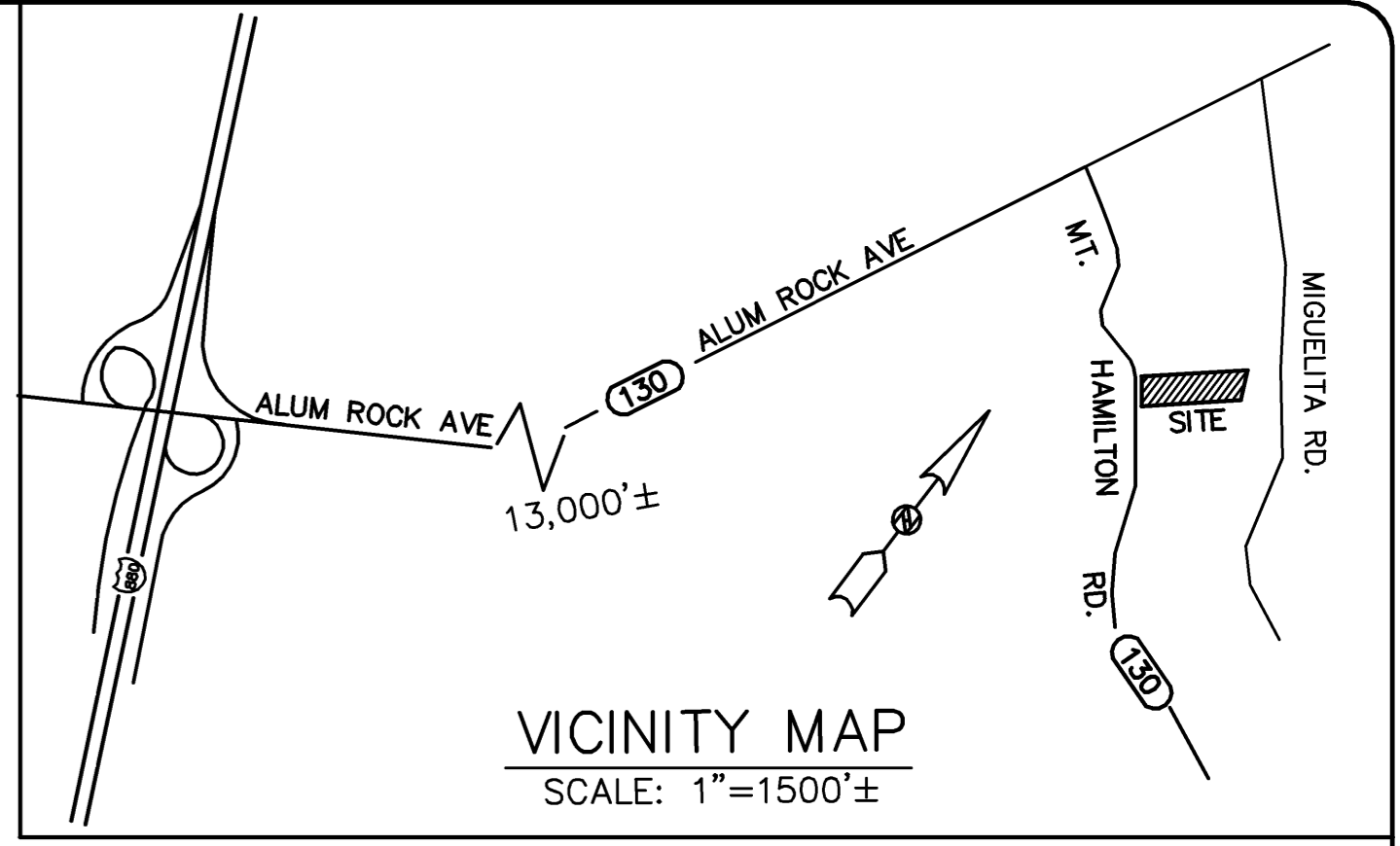
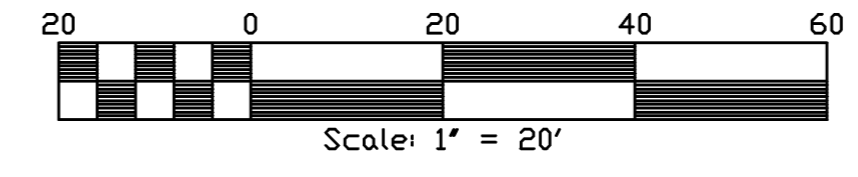


NOTES

1. CONTRACTOR SHALL CONTACT U.S.A. AT LEAST 48 HOURS PRIOR TO EXCAVATING IN ANY AREA WHERE UNDERGROUND FACILITIES ARE LOCATED. PHONE (800)642-2444.
2. THE EXISTENCE, LOCATION AND ELEVATION OF ANY UNDERGROUND UTILITIES ARE SHOWN IN A GENERAL WAY ONLY. IT WILL BE THE RESPONSIBILITY AND DUTY OF THE CONTRACTOR TO MAKE FINAL DETERMINATIONS AS TO THE EXISTENCE, LOCATION AND ELEVATION OF ALL UTILITIES.



PROPOSED PCL 1
AREA=26,228± SF

PROPOSED PCL 2
AREA=65,393± SF

LOT SIZES

	EXISTING (SF)	PROPOSED (SF)
PARCEL 1	87,078±	26,228±
PARCEL 2	4,543±	65,393±

ABBREVIATIONS

AC	ASPHALTIC CONCRETE	IE&E	INGRESS AND EGRESS EASEMENT
AD	AREA DRAIN	IRR	IRRIGATION
BFP	BACK FLOW PREVENTOR	JP	JOINT POLE
BLK	BLOCK	MTL	METAL
CB	CATCH BASIN	MON	MONUMENT
CL	CENTER LINE	OHV	OVERHEAD WIRE
CLF	CHAIN LINK FENCE	PL	PARCEL LINE
CO	CLEAN OUT	PP	PUBLIC SERVICES EASEMENT
CONC	CONCRETE	P.S.E	PUBLIC SERVICES EASEMENT
DI	DROP INLET	RPS	RESTRICTED PARKING SIGN
DWY	DRIVEWAY	RWD	REDWOOD
ELEC	ELECTRIC	SS	SANITARY SEWER
EL	ELECTROLIER	SSCO	SANITARY SEWER CLEANOUT
ESM'T	EASEMENT	SSMH	SANITARY MANHOLE
ENCL	ENCLOSURE	TRANS	TRANSFORMER
FOC	FACE OF CURB	TPOB	TRUE POINT OF BEGINNING
FND	FOUND	WLT	WATER
FH	FIRE HYDRANT	WM	WATER METER
GM	GAS METER	WCE	WIRE CLEARANCE EASEMENT
HC	HANDICAP	WV	WATER VALVE
HV	HIGH VOLTAGE		

PHILIPPE AUGER, R.C.E. 21500-EXPIRES 9-30-21
DANIEL NUNES, R.C.E. 76449-EXPIRES 12-31-22 L.S. 9212-EXPIRES 09-30-21

MISSION ENGINEERS, INC.
RESPONSIVE, RELIABLE RESULTS SINCE 1953
2355 De La Cruz Blvd. Santa Clara, California 95050
Ph: (408) 727-8262 FAX: (408) 727-8285 E-mail: mission@missionengineersinc.com

LOT LINE ADJUSTMENT SITE MAP
LANDS OF ZIA YASSINZADEH
APN 612-12-006
11240 MOUNT HAMILTON ROAD, SAN JOSE
SANTA CLARA COUNTY, CALIFORNIA

REVISIONS

DATE	BY	DESCRIPTION	CHK'D

SCALE: 1"=20'
DATE: 08-24-21
DWN: SS ME30
CHKD:
JOB NO. 18044
DWG NO. L14970

SHEET
1
OF 1 SHEET