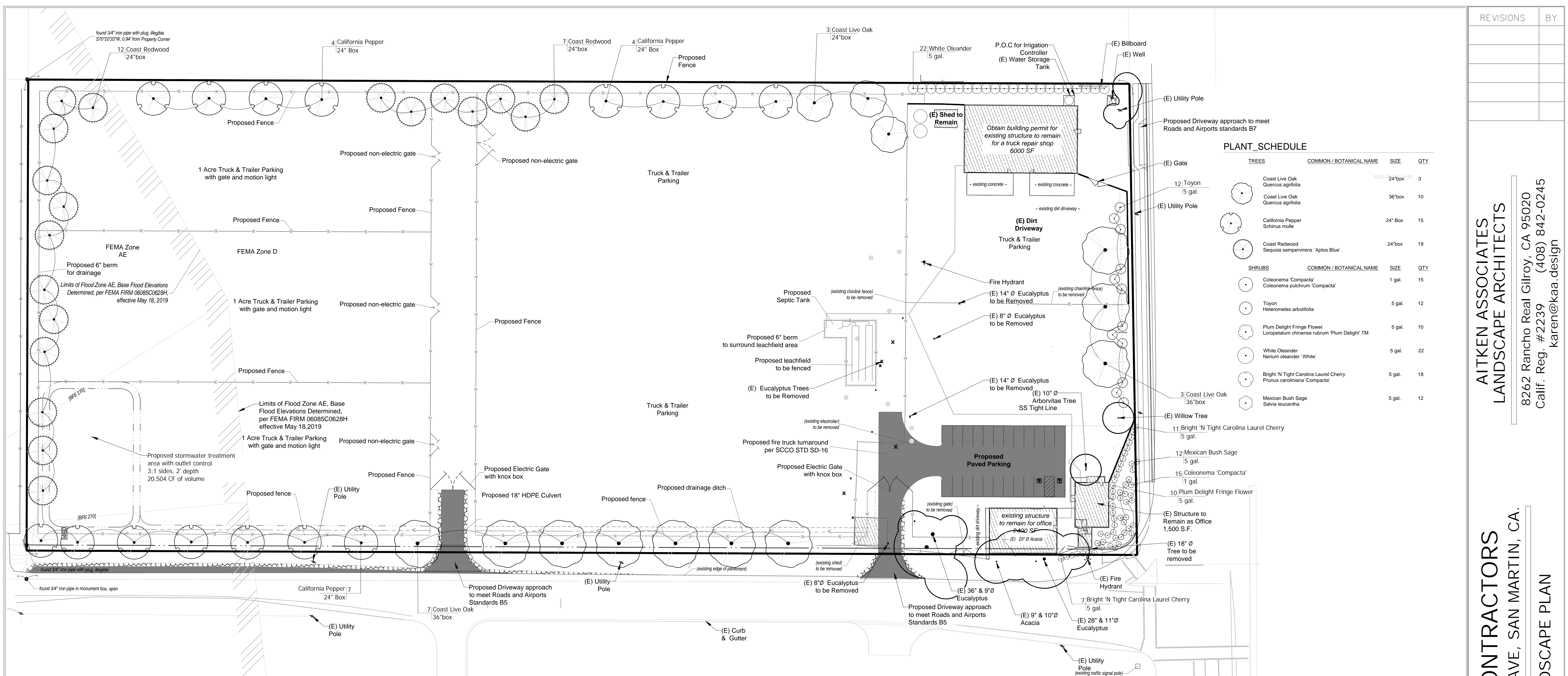


REVISIONS	BY



**PLANT SCHEDULE**

TREES	COMMON / BOTANICAL NAME	SIZE	QTY
	Coast Live Oak <i>Quercus agrifolia</i>	24" box	3
	Coast Live Oak <i>Quercus agrifolia</i>	36" box	10
	California Pepper <i>Schinus molle</i>	24" Box	15
	Coast Redwood <i>Sequoia sempervirens</i> 'Aptos Blue'	24" box	19
SHRUBS	COMMON / BOTANICAL NAME	SIZE	QTY
	Coleonema 'Compacta' <i>Coleonema pulchrum</i> 'Compacta'	1 gal.	15
	Toyon <i>Heteromeles arbutifolia</i>	5 gal.	12
	Plum Delight Fringe Flower <i>Loropetalum chinense rubrum</i> 'Plum Delight TM'	5 gal.	10
	White Oleander <i>Nerium oleander</i> 'White'	5 gal.	22
	Bright N Tight Carolina Laurel Cherry <i>Prunus caroliniana</i> 'Compacta'	5 gal.	18
	Mexican Bush Sage <i>Salvia leucantha</i>	5 gal.	12

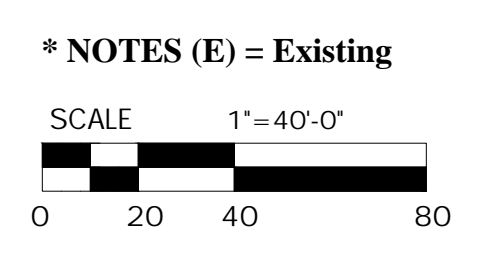
**PLANTING NOTES**

- The contractor shall locate and verify the existence of all utilities prior to starting work.
- The plant material locations are diagrammatic and subject to change in the field as directed by the Landscape Architect.
- All plant material shall conform to the guidelines established by the current American Standard of Nursery Stock, published by The American Association of Nurserymen.
- The plant count is for contractor's convenience. In case of discrepancy, the plan shall govern.
- All trees to be staked plumb unless otherwise noted.
- The landscape contractor shall guarantee all trees for a period of one year and all shrubs for a period of six months. Protect existing trees and shrubs as necessary.
- All planted areas and plant pits shall be free from rocks and debris greater than 2" in diameter.
- Apply a 3" Layer of BROWN Pro-Chip recycled wood mulch over all planted areas. Verify mulch distributor sources w/landscape architect if necessary.
- Trees shall be standard single trunk, not multi-trunked, and a minimum size of 24" Box.

Privacy Shrubs must be minimum fifteen (15) Gallons and six (6) Feet in height at planting

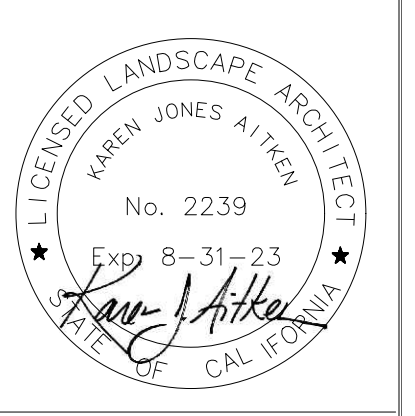
A minimum three (3) inch layer of mulch shall be applied on exposed soil surfaces of planting areas, except in areas of direct seeding application (e.g. hydro-seeding)

At least 4 cu. yds. of compost, six (6) inches deep, shall be applied per 1,000 sq.ft. of Landscape Area.



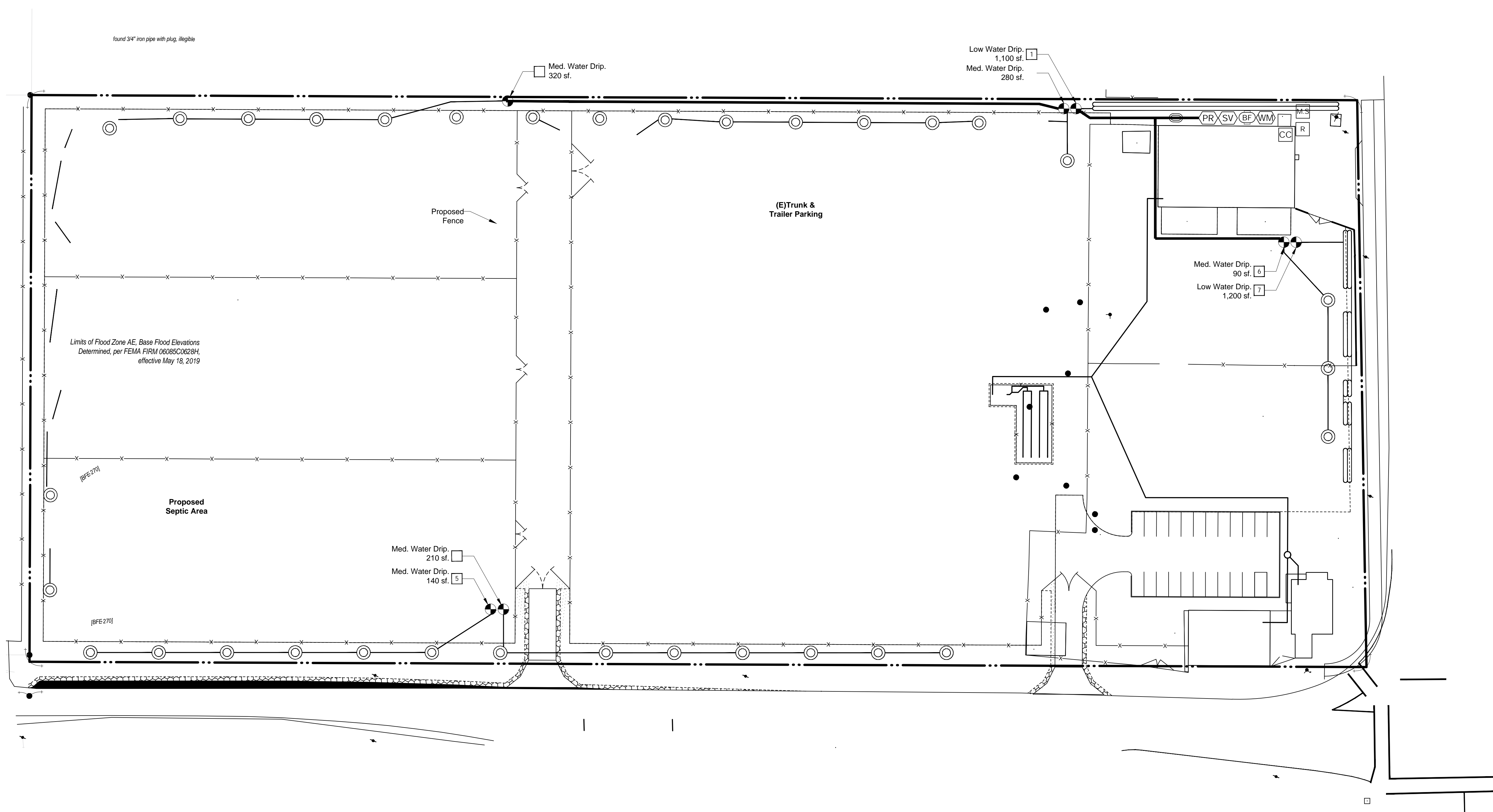
**AITKEN ASSOCIATES**  
**LANDSCAPE ARCHITECTS**  
 8262 Rancho Real Gilroy, CA 95020  
 Calif. Reg. #2239 (408) 842-0245  
 karen@kaa.design

**SVG CONTRACTORS**  
**HIGHLANDS AVE, SAN MARTIN, CA.**  
**LANDSCAPE PLAN**



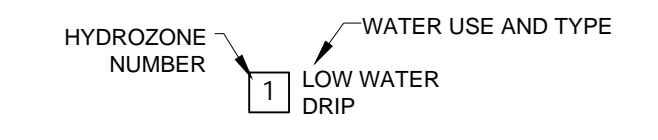
DATE	05-23-22
SCALE	1"=40'-0"
DRAWN	EM,AD, IN
JOB	SVG CONST.

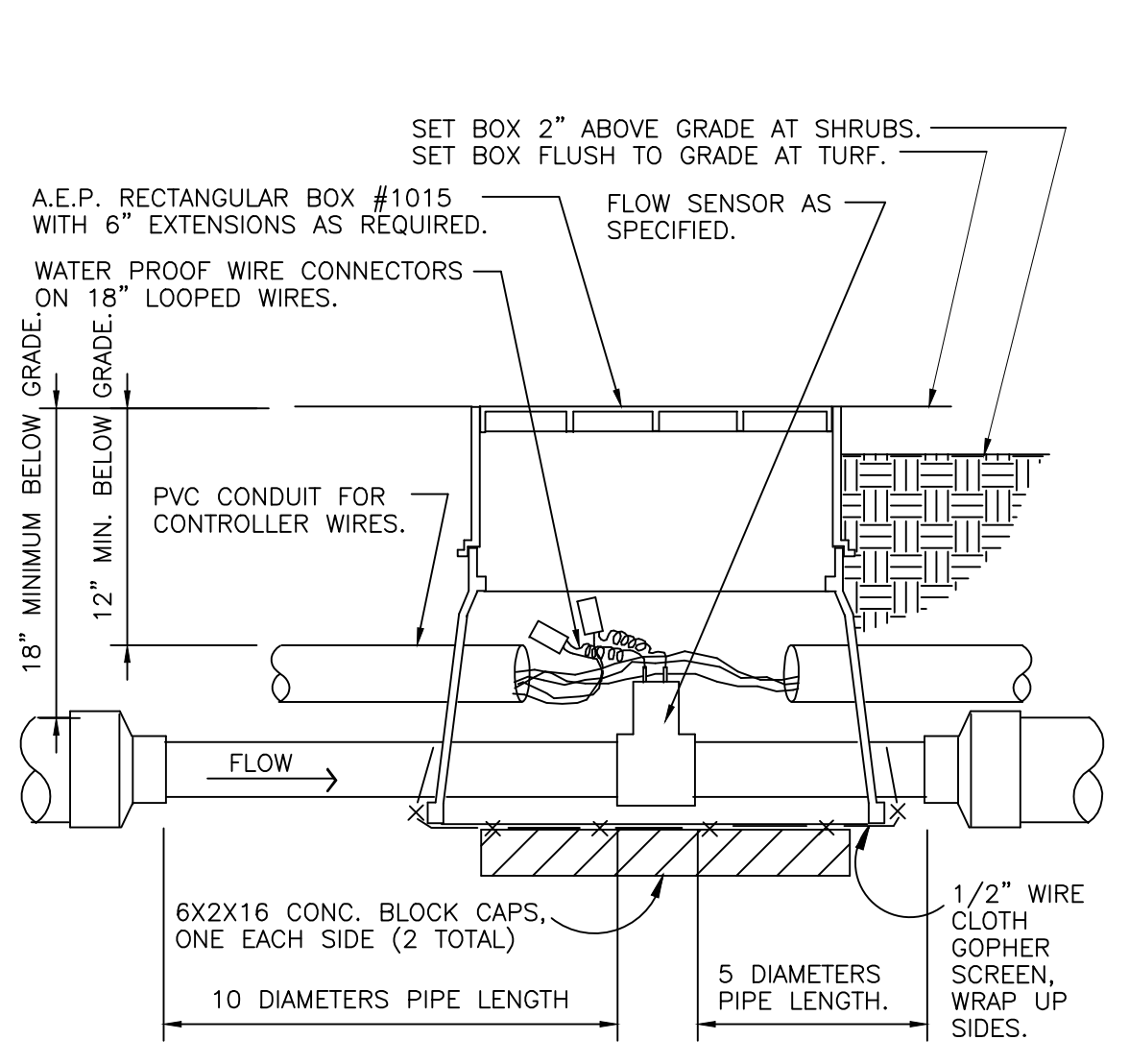
**L-1**



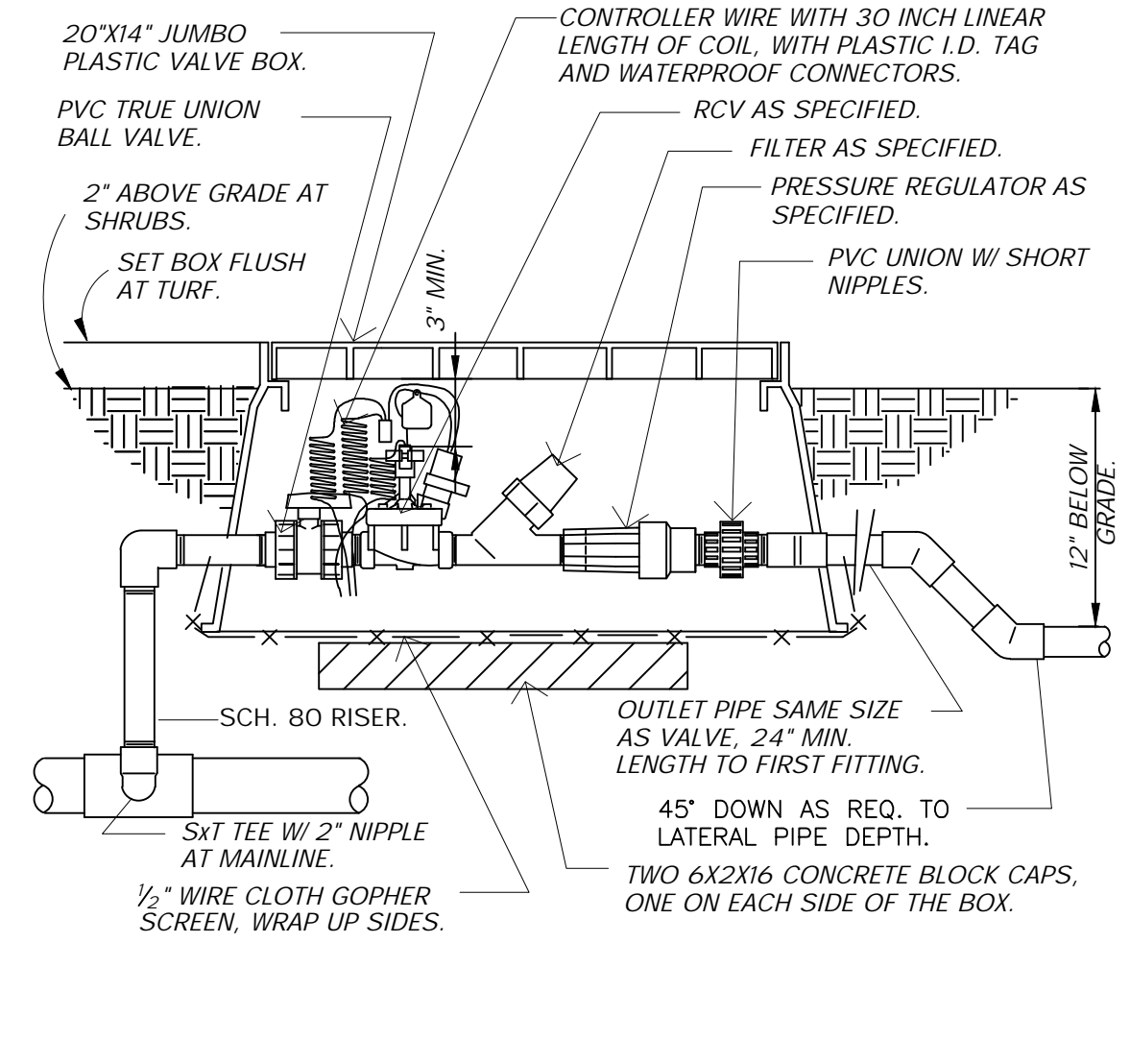
### IRRIGATION\_LEGEND

SYMBOL	MANUFACTURER/ MODEL
	Main Line SCH 40 2"
	Lateral Line SCH 40 1"
	Sleeves SCH 40 4" or contractor to locate and use existing if possible
	Rainbird Drip Valve XCS-100-PRF
	Drip Line: Netafim Techline CV LITE with 18" Emmitter spacing and 24" lateral spacing. Provide flush valves at the end of each circuit and air relief valve at the high point of each circuit.
	Tree Ring Irrigation Netafim Techline CV LITE with 0.9 drip emitters placed every 12 in. Inner Ring - 12" from plant, Outer ring 30" from plant. Place tie down every 4' in loam and 5' in clay
	Master Shut Off Valve behind Meter
	Medium Flow Inline Pressure Regulator 40 PSI
	Rainbird Flow Sensor FS-200-P Note: Provide a clear, unobstructed distance of at least 10xs the pipe's diameter upstream of the sensor and at least 5xs the pipe's diameter downstream of the sensor
	New Irrigation 1" Water Meter
	FEBCO Backflow Preventer 1" 825Y
	Rainbird Controller 4 to 22- station ESP-Me (Wall Mount)
	Rainbird SMRT-Y Soil Moisture Sensor
	Rainbird RSD Series Rain Shut Off

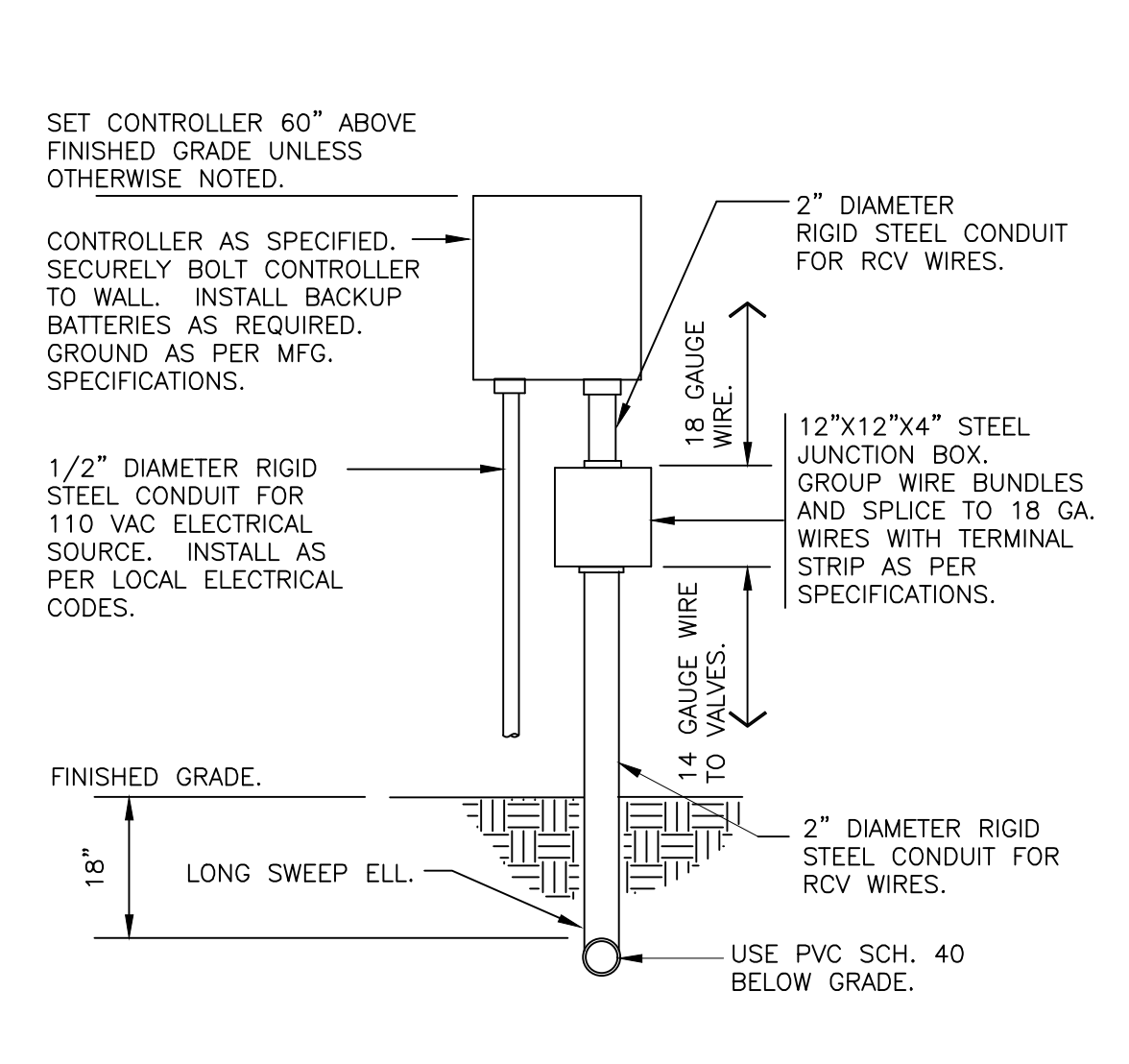




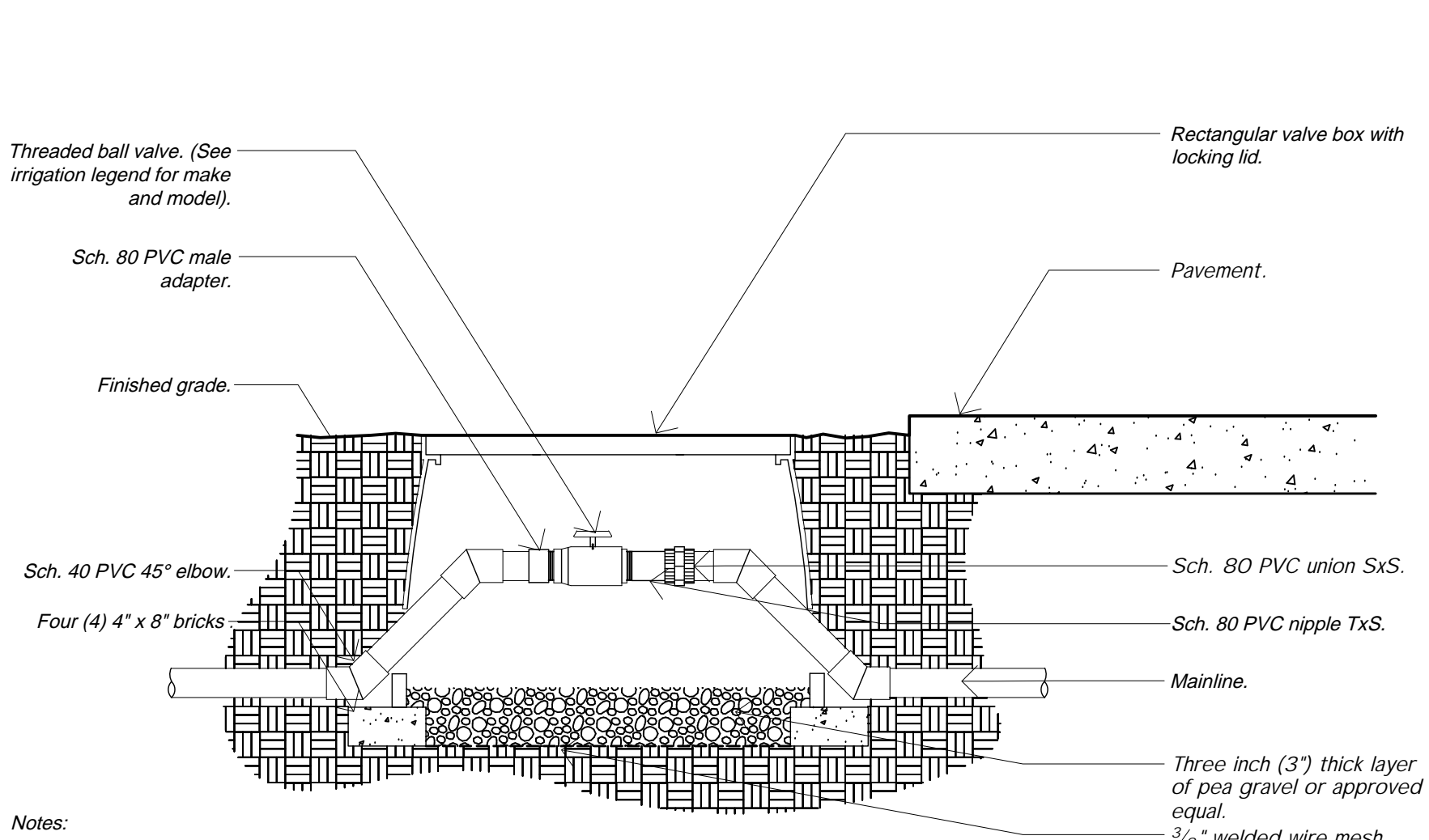
FLOW SENSOR ASSEMBLY



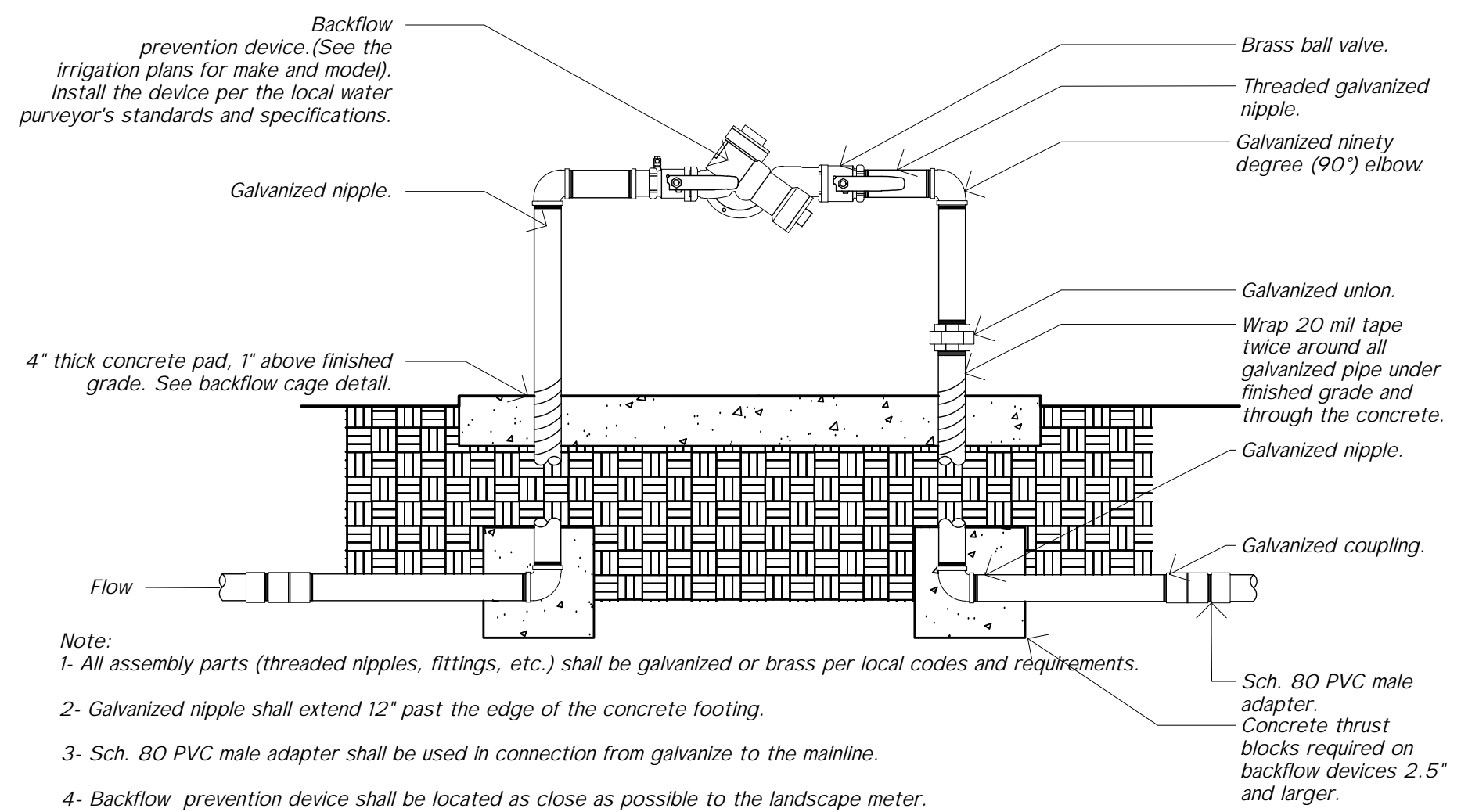
1" DRIP VALVE/FILTER/REGULATOR



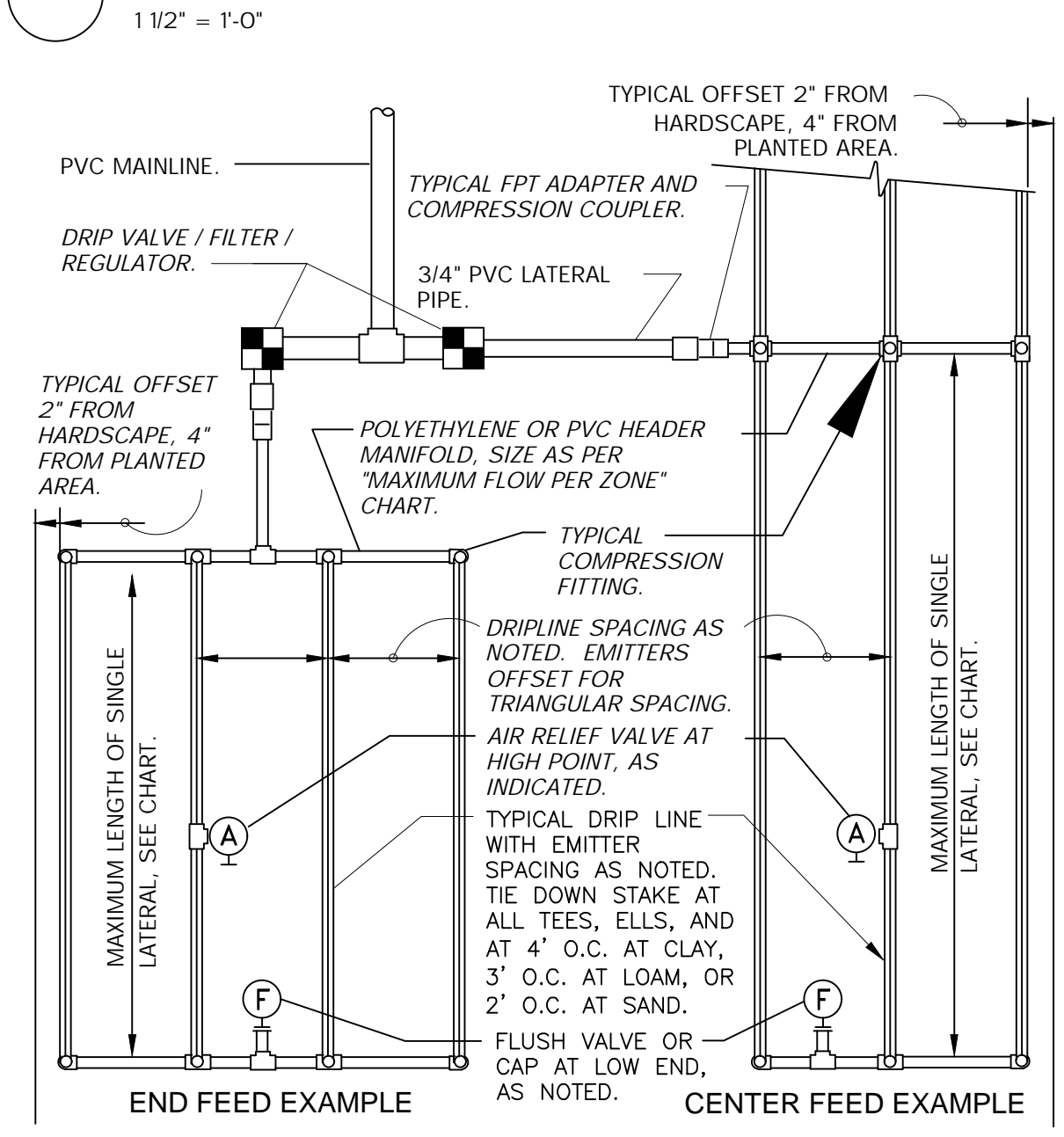
WALL MOUNT CONTROLLER



SHUT OFF BALL VALVE - 3" AND SMALLER



BACKFLOW PREVENTION DEVICE



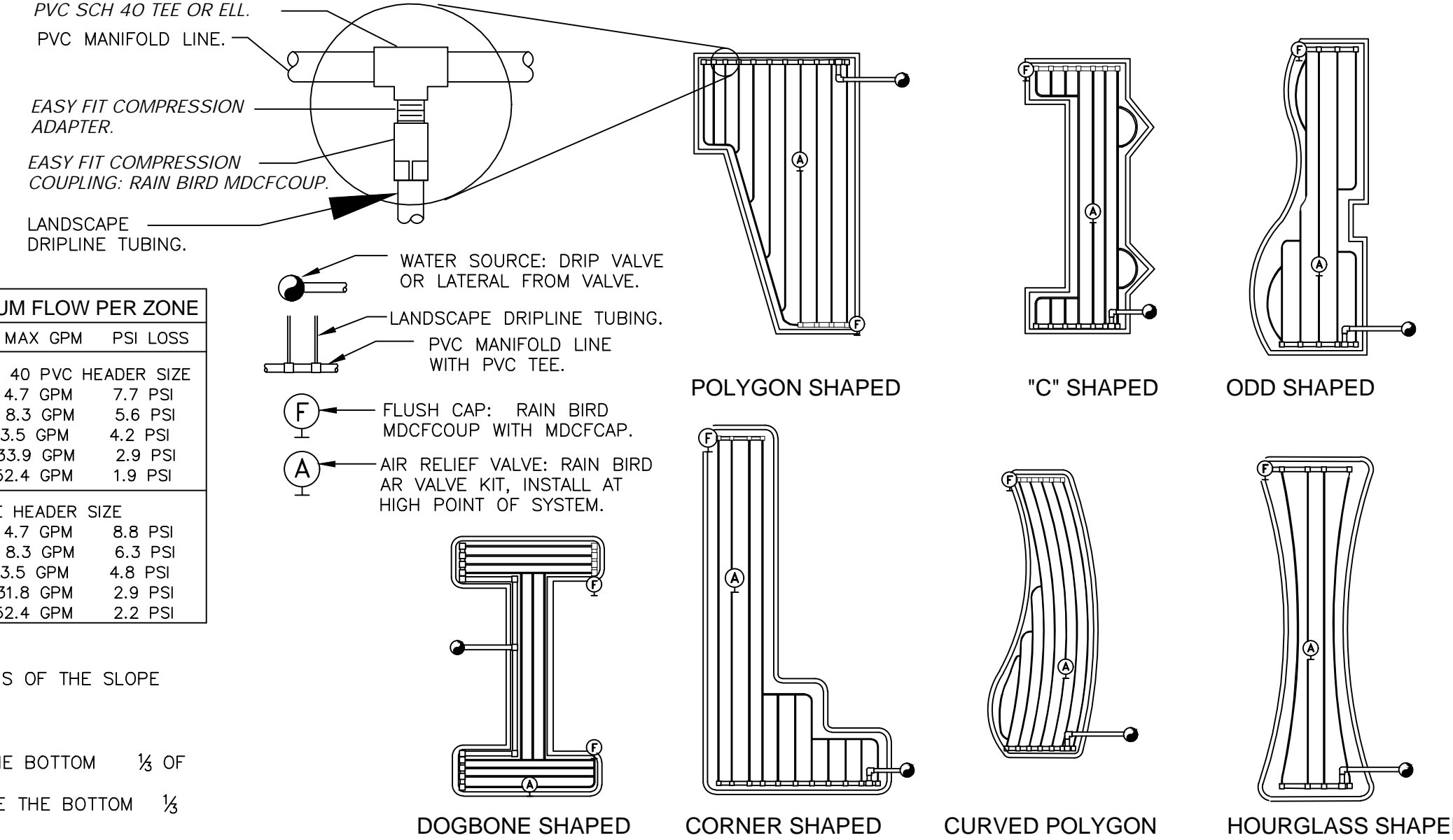
TYPICAL RAIN BIRD DRIPLINE REQUIREMENTS

MAXIMUM LATERAL LENGTH (FEET)						
		EMITTER FLOW RATE GPH				
PSI	12" SPACING		18" SPACING		24" SPACING	
	0.6	0.9	0.6	0.9	0.6	0.9
10	125	96	175	135	218	171
20	249	191	350	171	442	340
30	307	236	434	333	550	422
40	350	268	495	380	627	171
50	125	96	175	135	218	171
60	125	96	175	135	218	171

GRID PRECIPITATION RATES (IN/HR)			
EMITTER SPACING	LATERAL SPACING	EMITTER FLOW RATE	
		0.6	0.9
12	12	0.96	1.44
18	18	0.69	1.03
24	24	0.28	0.41

LATERAL FLOW PER 100 FT (GPM)				
EMITTER FLOW	12" SPACING		18" SPACING	
	EMITTER SPACING	12"	EMITTER SPACING	18"
0.6 GPH	1.0 GPM	0.67 GPM	0.50 GPM	0.9 GPM
0.9 GPH	1.5 GPM	1.0 GPM	0.75 GPM	1.3 GPM

- SLOPED CONDITION NOTE:
1. DRIPLINE LATERALS SHOULD FOLLOW THE CONTOURS OF THE SLOPE WHENEVER POSSIBLE.
  2. INSTALL AIR RELIEF VALVE AT HIGHEST POINT.
  3. NORMAL SPACING WITHIN THE TOP 1/3 OF SLOPE.
  4. INSTALL DRIPLINE AT 25% GREATER SPACING AT THE BOTTOM 1/3 OF THE SLOPE.
  5. WHEN ELEVATION CHANGE IS 10 FT OR MORE, ZONE THE BOTTOM 1/3 ON A SEPARATE VALVE.



Project Name:	SVG Construction
Project Location:	Highland Ave. San Martin CA.
Total Landscape Area:	4,621.0 sq. ft.
Date:	5/18/2022

**MAWA CALCULATION**

MAWA = Maximum Applied Water Allowance (gallons per year)  
 Eto = Reference Evapotranspiration (inches per year)  
 62 = Conversion Factor (to gallons)  
 0.55 = ET Adjustment Factor (ETAF)  
 LA = Landscape Area including SLA (square feet)  
 0.45 = Additional Water Allowance for SLA  
 SLA = Special Landscape Area (square feet)

Eto =	49.5
Conversion	0.62
ETAF =	0.55
LA =	4,621
SLA =	0
MAWA =	78,000.2 gallons per year
	10,427.8 cubic feet per year

**MAWA with EPPT**

MAWA = (Eto-EpPt)(62)/((0.55xLA) + (1-ETAF x SLA))  
 EpPt = 25% of Annual precipitation

Eto =	49.5
EpPt =	9.82
ETAF =	0.55
LA =	4,621
SLA =	0
MAWA w/ EPPT =	62,550.8 gallons per year
	8,362.4 cubic feet

**ETWU CALCULATION**

ETWU = (Eto)(62)/(PF)(E)(LA)  
 ETWU = Estimated Total Water Use Per Year (gallons)  
 Eto = Reference Evapotranspiration  
 PF = Plant Factor from WUCOLS (Region 2, Water Use: H 0.7 - 0.9, M 0.4 - 0.6, L 0.1 - 0.3, VL < 0.1, All Turf 0.8)  
 LA = Landscape Area (High, Medium, and low water use areas) square feet  
 SLA = Special Landscape Area  
 62 = Conversion Factor  
 IE = Irrigation Efficiency (drip spray and bubblers .81, sub surface .81, spray sprinklers .75)  
 ET Adjustment Factor (ETAF) .55 for Residential and .45 for Non Residential

Reference Evapotranspiration (Eto)	49.5	Morgan Hill, Ca
------------------------------------	------	-----------------

Hydrozone #/ Plant Description	Irrigation Method	Plant Factor (PF)	Irrigation Efficiency (IE)	ETAF (PF/IE)	Landscape Area (sq. ft)	ETAF x Area	ETWU	
1.) Low Water Use / Shrubs	Drip	0.3	0.81	0.37037037	1,100.0	407.4	12,503.3	
2.) Med. Water Use / Trees	Drip	0.4	0.81	0.49382716	290.0	138.3	4,243.6	
3.) Med. Water Use / Trees	Drip	0.4	0.81	0.49382716	320.0	158.0	4,849.8	
4.) Med. Water Use / Trees	Drip	0.4	0.81	0.49382716	210.0	103.7	3,182.7	
5.) Med. Water Use / Trees	Drip	0.4	0.81	0.49382716	140.0	69.1	2,121.8	
6.) Med. Water Use / Trees	Drip	0.4	0.81	0.49382716	90.0	44.4	1,364.0	
7.) Low Water Use / Shrubs	Drip	0.3	0.81	0.37037037	1,200.0	444.4	13,840.0	
8.) Low Water Use / Shrubs	Drip	0.3	0.81	0.37037037	625.0	231.5	7,104.2	
9.) Low Water Use / Shrubs	Drip	0.3	0.81	0.37037037	656.0	243.0	7,456.5	
Total of ft.						Totals	Totals	
						4,621.0	1,839.9	56,465.8

Hydrozone #/ Plant Description	Irrigation Method	Plant Factor (PF)	Irrigation Efficiency (IE)	ETAF (PF/IE)	Landscape Area (sq. ft)	ETAF x Area	ETWU
					1	0	0.0
Totals						0	0.0
						Totals	Totals
						0	0.0
						ETWU TOTAL	56,465.8
						MAWA	78,000.2

**ETAF CALCULATIONS**

Regular Landscape Areas	Total ETAF x Area	Total Area	Average ETAF
	1,839.9	4,621.0	0.40

Special Landscape Areas	Total ETAF x Area	Total Area	Stewardship ETAF
	1,839.9	4,621.0	0.40

Average ETAF for Regular Landscape Areas must be .55 or below for residential areas, and .45 or below for non residential areas.

AITKEN ASSOCIATES  
 LANDSCAPE ARCHITECTS  
 8262 Rancho Real Gilroy, CA 95020  
 Calif. Reg. #2239 (408) 842-0245  
 karen@kaa.design

SVG CONTRACTORS  
 HIGHLANDS AVE, SAN MARTIN, CA.  
 IRRIGATION DETAILS



DATE	05-23-2022
SCALE	N.T.S.
DRAWN	EM, AD, IN
JOB	SVG CONST.