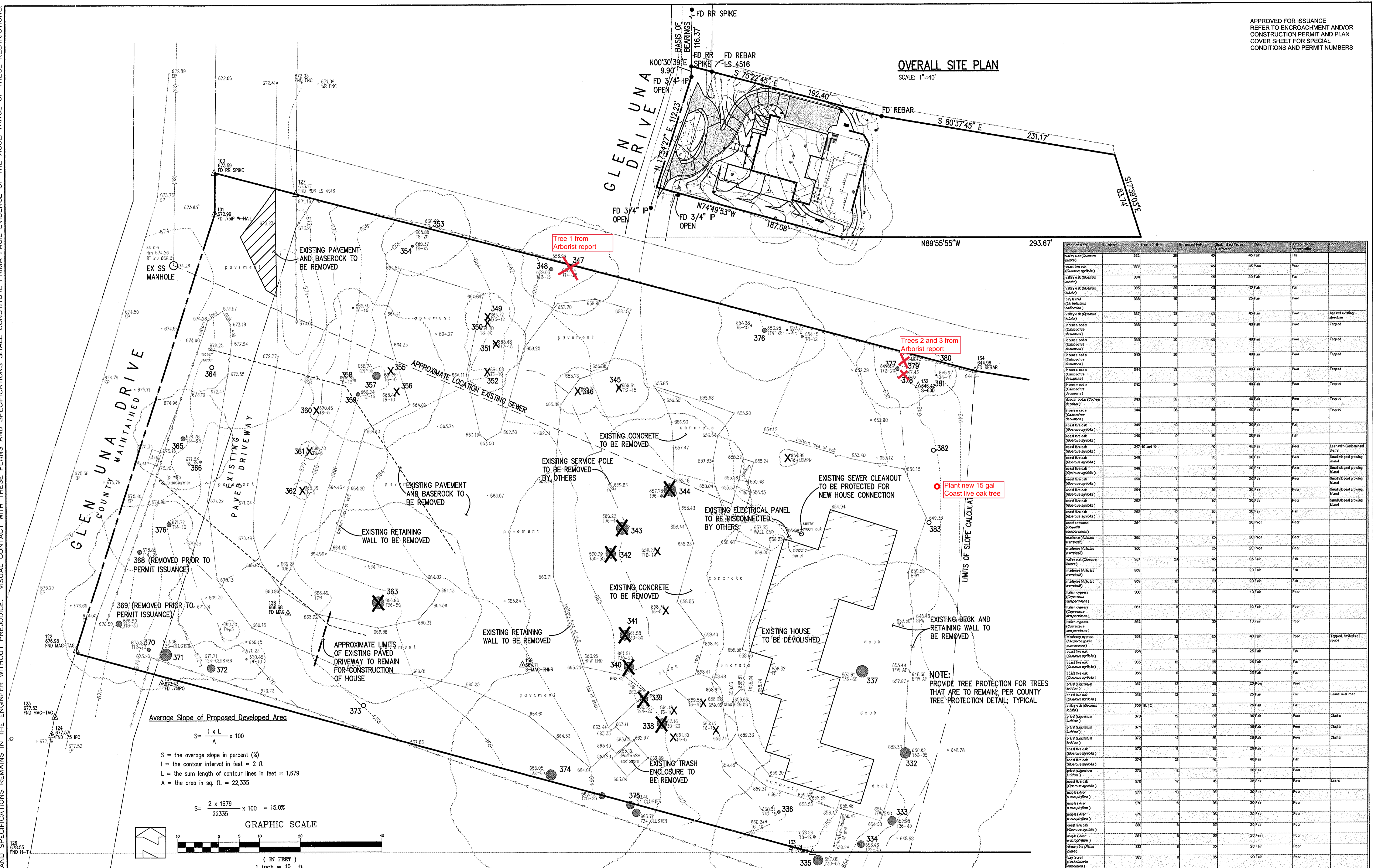


OVERALL SITE PLAN
SCALE: 1"=40'

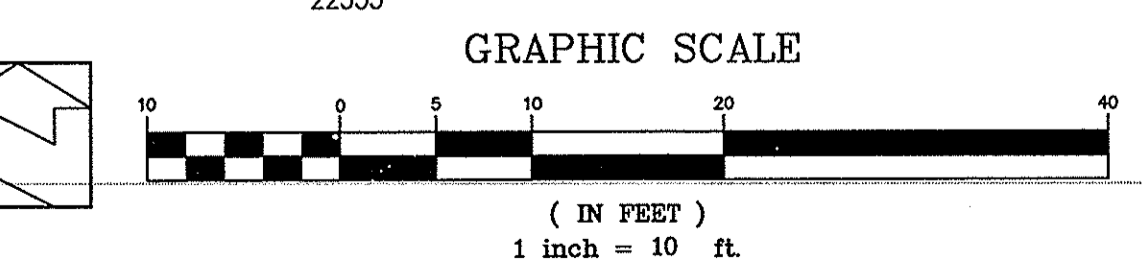


Tree Species	Number	Trunk Girth	Estimated Height	Estimated Crown Diameter	Condition	Authority for Preservation	Notes
valley oak (Quercus lobata)	322	28	45	45	Fair	Fair	
coast live oak (Quercus agrifolia)	323	30	45	45	Poor	Poor	
valley oak (Quercus lobata)	324	30	45	45	Fair	Fair	
valley oak (Quercus lobata)	325	30	45	45	Fair	Fair	
live laurel (Laurus nobilis)	326	15	25	25	Fair	Poor	Against existing structure
valley oak (Quercus lobata)	327	25	55	45	Fair	Poor	Against existing structure
interior cedar (Cedrus deodora)	328	25	55	45	Fair	Poor	Topped
interior cedar (Cedrus deodora)	329	25	55	45	Fair	Poor	Topped
interior cedar (Cedrus deodora)	330	25	55	45	Fair	Poor	Topped
interior cedar (Cedrus deodora)	331	25	55	45	Fair	Poor	Topped
interior cedar (Cedrus deodora)	332	25	55	45	Fair	Poor	Topped
interior cedar (Cedrus deodora)	333	25	55	45	Fair	Poor	Topped
interior cedar (Cedrus deodora)	334	25	55	45	Fair	Poor	Topped
interior cedar (Cedrus deodora)	335	25	55	45	Fair	Poor	Topped
interior cedar (Cedrus deodora)	336	25	55	45	Fair	Poor	Topped
interior cedar (Cedrus deodora)	337	25	55	45	Fair	Poor	Topped
interior cedar (Cedrus deodora)	338	25	55	45	Fair	Poor	Topped
interior cedar (Cedrus deodora)	339	25	55	45	Fair	Poor	Topped
interior cedar (Cedrus deodora)	340	25	55	45	Fair	Poor	Topped
interior cedar (Cedrus deodora)	341	25	55	45	Fair	Poor	Topped
interior cedar (Cedrus deodora)	342	25	55	45	Fair	Poor	Topped
interior cedar (Cedrus deodora)	343	25	55	45	Fair	Poor	Topped
interior cedar (Cedrus deodora)	344	25	55	45	Fair	Poor	Topped
interior cedar (Cedrus deodora)	345	25	55	45	Fair	Poor	Topped
interior cedar (Cedrus deodora)	346	25	55	45	Fair	Poor	Topped
interior cedar (Cedrus deodora)	347	25	55	45	Fair	Poor	Topped
interior cedar (Cedrus deodora)	348	25	55	45	Fair	Poor	Topped
interior cedar (Cedrus deodora)	349	25	55	45	Fair	Poor	Topped
interior cedar (Cedrus deodora)	350	25	55	45	Fair	Poor	Topped
interior cedar (Cedrus deodora)	351	25	55	45	Fair	Poor	Topped
interior cedar (Cedrus deodora)	352	25	55	45	Fair	Poor	Topped
interior cedar (Cedrus deodora)	353	25	55	45	Fair	Poor	Topped
interior cedar (Cedrus deodora)	354	25	55	45	Fair	Poor	Topped
interior cedar (Cedrus deodora)	355	25	55	45	Fair	Poor	Topped
interior cedar (Cedrus deodora)	356	25	55	45	Fair	Poor	Topped
interior cedar (Cedrus deodora)	357	25	55	45	Fair	Poor	Topped
interior cedar (Cedrus deodora)	358	25	55	45	Fair	Poor	Topped
interior cedar (Cedrus deodora)	359	25	55	45	Fair	Poor	Topped
interior cedar (Cedrus deodora)	360	25	55	45	Fair	Poor	Topped
interior cedar (Cedrus deodora)	361	25	55	45	Fair	Poor	Topped
interior cedar (Cedrus deodora)	362	25	55	45	Fair	Poor	Topped
interior cedar (Cedrus deodora)	363	25	55	45	Fair	Poor	Topped
interior cedar (Cedrus deodora)	364	25	55	45	Fair	Poor	Topped
interior cedar (Cedrus deodora)	365	25	55	45	Fair	Poor	Topped
interior cedar (Cedrus deodora)	366	25	55	45	Fair	Poor	Topped
interior cedar (Cedrus deodora)	367	25	55	45	Fair	Poor	Topped
interior cedar (Cedrus deodora)	368	25	55	45	Fair	Poor	Topped
interior cedar (Cedrus deodora)	369	25	55	45	Fair	Poor	Topped
interior cedar (Cedrus deodora)	370	25	55	45	Fair	Poor	Topped
interior cedar (Cedrus deodora)	371	25	55	45	Fair	Poor	Topped
interior cedar (Cedrus deodora)	372	25	55	45	Fair	Poor	Topped
interior cedar (Cedrus deodora)	373	25	55	45	Fair	Poor	Topped
interior cedar (Cedrus deodora)	374	25	55	45	Fair	Poor	Topped
interior cedar (Cedrus deodora)	375	25	55	45	Fair	Poor	Topped
interior cedar (Cedrus deodora)	376	25	55	45	Fair	Poor	Topped
interior cedar (Cedrus deodora)	377	25	55	45	Fair	Poor	Topped
interior cedar (Cedrus deodora)	378	25	55	45	Fair	Poor	Topped
interior cedar (Cedrus deodora)	379	25	55	45	Fair	Poor	Topped
interior cedar (Cedrus deodora)	380	25	55	45	Fair	Poor	Topped
interior cedar (Cedrus deodora)	381	25	55	45	Fair	Poor	Topped
interior cedar (Cedrus deodora)	382	25	55	45	Fair	Poor	Topped
interior cedar (Cedrus deodora)	383	25	55	45	Fair	Poor	Topped
interior cedar (Cedrus deodora)	384	25	55	45	Fair	Poor	Topped
interior cedar (Cedrus deodora)	385	25	55	45	Fair	Poor	Topped
interior cedar (Cedrus deodora)	386	25	55	45	Fair	Poor	Topped
interior cedar (Cedrus deodora)	387	25	55	45	Fair	Poor	Topped
interior cedar (Cedrus deodora)	388	25	55	45	Fair	Poor	Topped
interior cedar (Cedrus deodora)	389	25	55	45	Fair	Poor	Topped
interior cedar (Cedrus deodora)	390	25	55	45	Fair	Poor	Topped
interior cedar (Cedrus deodora)	391	25	55	45	Fair	Poor	Topped
interior cedar (Cedrus deodora)	392	25	55	45	Fair	Poor	Topped
interior cedar (Cedrus deodora)	393	25	55	45	Fair	Poor	Topped
interior cedar (Cedrus deodora)	394	25	55	45	Fair	Poor	Topped
interior cedar (Cedrus deodora)	395	25	55	45	Fair	Poor	Topped
interior cedar (Cedrus deodora)	396	25	55	45	Fair	Poor	Topped
interior cedar (Cedrus deodora)	397	25	55	45	Fair	Poor	Topped
interior cedar (Cedrus deodora)	398	25	55	45	Fair	Poor	Topped
interior cedar (Cedrus deodora)	399	25	55	45	Fair	Poor	Topped
interior cedar (Cedrus deodora)	400	25	55	45	Fair	Poor	Topped

Average Slope of Proposed Developed Area

$$S = \frac{I \times L}{A} \times 100$$

S = the average slope in percent (%)
I = the contour interval in feet = 2 ft
L = the sum length of contour lines in feet = 1,679
A = the area in sq. ft. = 22,335

$$S = \frac{2 \times 1679}{22335} \times 100 = 15.0\%$$


PLAN # _____ OF _____ SHEET

DATE	REVISIONS: DESCRIPTION	BY:

HANNA-BRUNETTI
EST. 1910
CIVIL ENGINEERS - LAND SURVEYORS
CONSTRUCTION MANAGERS

DATE: MARCH 2018
HORIZ. SCALE: 1"=40'
VERT. SCALE: NONE
DESIGNED BY: AM
CHECKED BY: _____
DRAWN BY: TM

date: 3/14/18
Hanna - Brunetti
Amanda M. Musy-Verdel
REGISTERED PROFESSIONAL ENGINEER
AMANDA JOY MUSY-VERDEL
NO. 69278
EXP. 6-30-18
CIVIL
STATE OF CALIFORNIA
R.C.E. # 69-278
expres: 6/30/18

REFERENCES

Existing Topography, Demolition Plan & Tree List
Lands of S&S Estate Development LLC - 15814 Glen Una Drive - apn 510-26-019
UNINCORPORATED
MARCH 2018