

AVERAGE SLOPE, $S = \frac{I * L * 100}{A}$

S = AVG. SLOPE IN % A

I = CONTOUR INTERVAL IN FEET

L = COMBINED LENGTH OF CONTOUR LINES IN FT.

USING THE FOLLOWING VALUES FOR THE SITE:

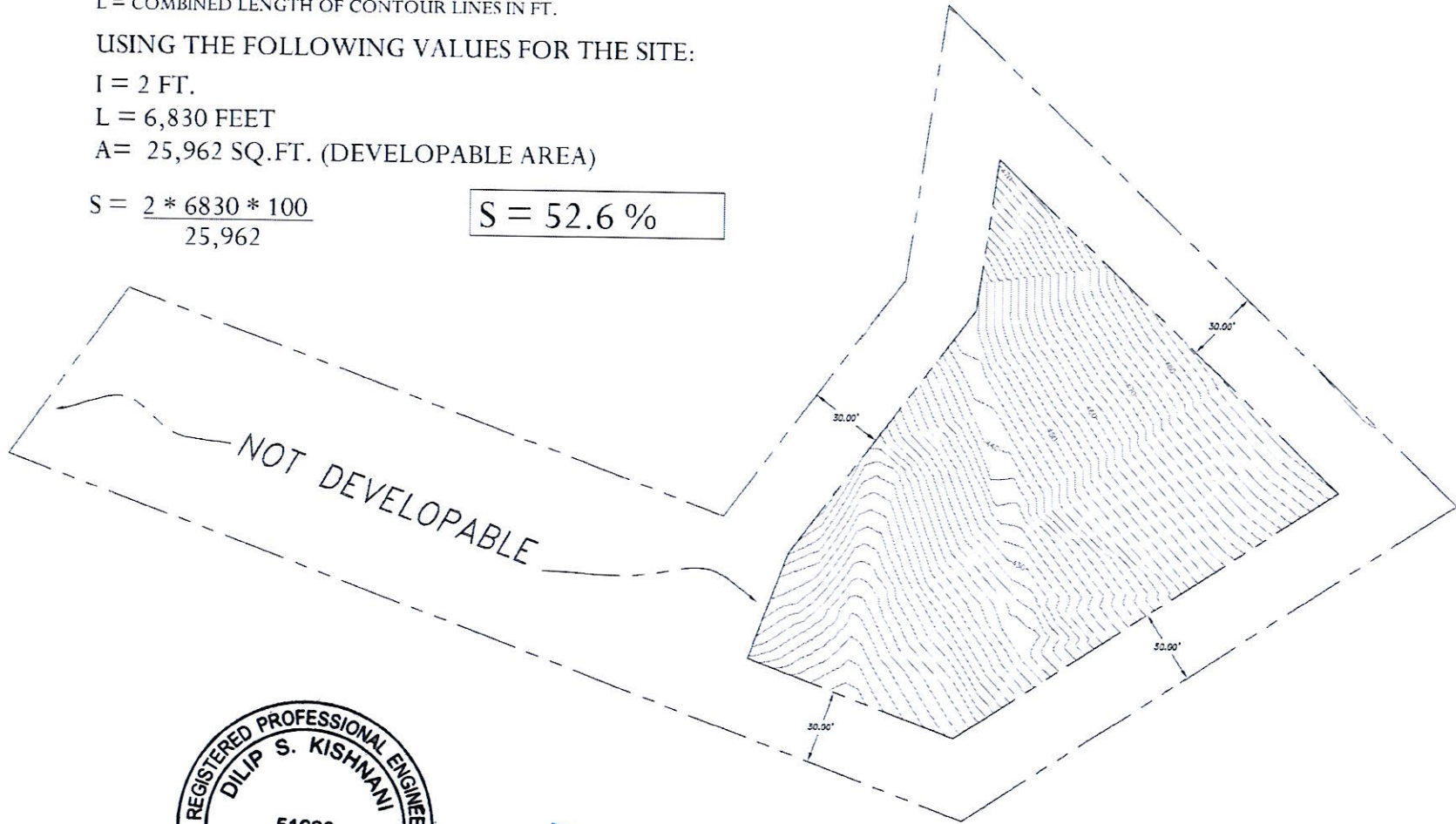
I = 2 FT.

L = 6,830 FEET

A = 25,962 SQ.FT. (DEVELOPABLE AREA)

$$S = \frac{2 * 6830 * 100}{25,962}$$

S = 52.6 %



[Handwritten Signature]
7/21/2022