

TREES REMOVAL PERMIT SITE PLAN

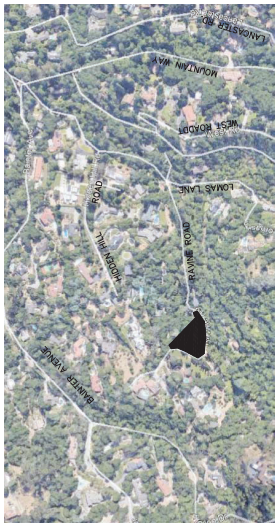
We have a permit DEV22-2029, which was issued in 05/24/23 to replace failing bridge. The property is located at 15891 Ravine rd, Los Gatos, CA 95030. As part of this permit, we have to build a retaining wall to stabilize the earth at the approach to a new bridge. There are two trees that are on the path of the retaining wall; therefore, we are submitting request to have these two trees removed.

Both of the trees to be removed are Bay trees. The size of the trees is 12" as measured 4.5' above grade. Their height is about 20-30 feet.

The locations of the trees to be removed, and trees to be replanted are indicated as red dots on the attached site plan. The replanted trees will be California natives.

The property is over populated with trees as shown in the attached photos. We couldn't count all the trees that will remain, our estimated is over 200 trees will remain on the property upon completion of the cutting.

Detail information about the property is shown in the attached topography.



VICINITY MAP

- NOTES:
- THE GEOTECHNICAL ASPECTS OF THE CONSTRUCTION INCLUDING GRADING, DRILLED PIER FOUNDATIONS, RETAINING WALL SUBRAN INSTALLATION, AND SUBGRADE PREPARATION AND BASEROCK COMPACTION AT THE DRIVEWAY SHALL BE PERFORMED IN ACCORDANCE WITH THE CALIFORNIA GEOTECHNICAL MANUAL, WESTFALL ENGINEERS, INC. DATED 08/28/2018 AND THE CALIFORNIA GEOTECHNICAL RECOMMENDATIONS LETTER DATED 08/28/2018.
 - THE PARCEL IS LOCATED IN THE MIDLAND URBAN INTERFACE, MUI.
 - THIS BRIDGE IS DESIGNED FOR A LIVE LOAD SUFFICIENT TO CARRY THE IMPOSED LOAD OF A FIRE APPARATUS WEIGHT, AT LEAST 75000 POUNDS.
 - THE BRIDGE SHALL BE CONSTRUCTED AND MAINTAINED IN ACCORDANCE WITH AASHTO HB17.
 - THE BRIDGE IS DESIGNED FOR A LIVE LOAD SUFFICIENT TO CARRY THE IMPOSED LOAD OF A FIRE APPARATUS WEIGHT, AT LEAST 75000 POUNDS.
 - THIS PARCEL IS LOCATED IN THE MIDLAND URBAN INTERFACE, MUI.
 - THE BRIDGE IS LOCATED IN THE WILDLAND URBAN INTERFACE, WUI.
 - THE RESPONDING AGENCY IS CAL FIRE AND MUST COMPLY WITH SFA FIRE SAFETY REGULATIONS PRC 4250.

ARCHITECT: NONE
 ENGINEER: WESTFALL ENGINEERS, INC.
 14589 BIG BASTIN WAY, SARATOGA, CA 95070
 408-867-0244

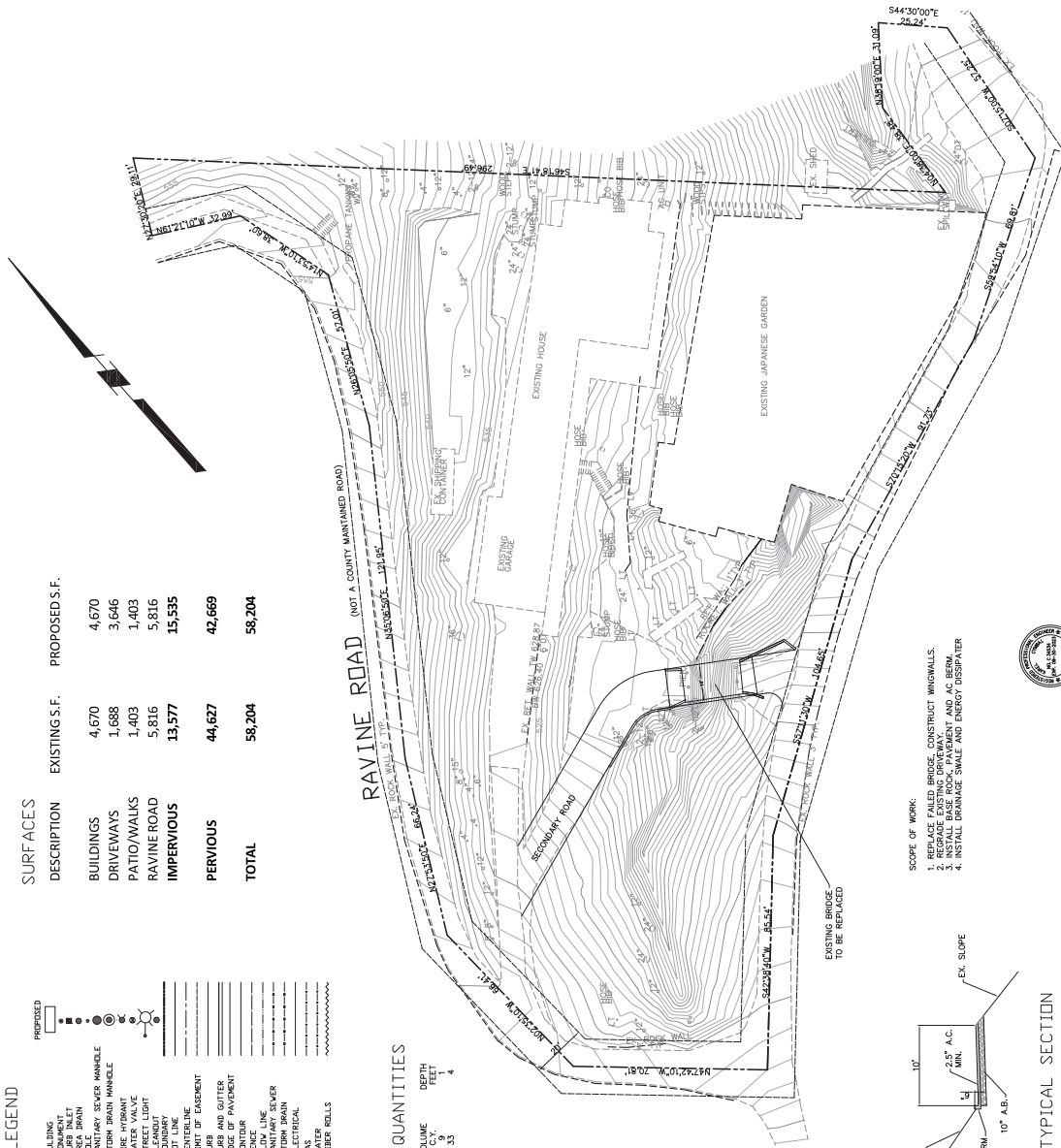
STRUCTURAL ENGINEER: SAJAL V. JOSHI, P.E.
 15897 RAVINE ROAD
 SAN JOSE, CA 95128
 408-577-0375

PROJECT NAME: WESTFALL ENGINEERS, INC.
 15897 RAVINE ROAD
 LOS ATOS, CA 95030
 408-425-8355

APPLICABLE CODES:
 CBC California Building Code 2019
 California Residential Code 2019
 California Electrical Code 2019
 California Mechanical Code 2019
 California Fire Code 2019
 California Fire Department Building Standards Code 2019
 CAL Green California Green Building Standards Code 2019
 Minimum Design Loads and Associated Criteria 2015
 SDG&E Special Design Provisions for Wind & Seismic 2015

- INDEX:
- SHEET C1 ROAD AND BRIDGE REPAIR PLAN
 - SHEET C2 PROFILE AND DETAILS
 - SHEET C3 EROSION CONTROL PLAN
 - SHEET C4 BMP
 - SHEET C5 & 6 EROSION CONTROL PLAN
 - SHEET C7, C8, C9 TOPOGRAPHIC SURVEY MAPS
 - SHEET C10, C11, C12 CONSTRUCTION SPECIFICATIONS
 - SHEET S1.0 STRUCTURAL PLAN
 - SHEET S1.1 FOUNDATION PLAN
 - SHEET S1.2 STRUCTURAL DETAILS

TITLE SHEET
 LANDS OF NGUYEN
 15897 RAVINE ROAD, SANTA CLARA COUNTY



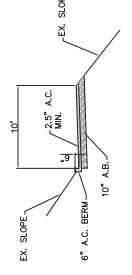
SURFACES

DESCRIPTION	EXISTING S.F.	PROPOSED S.F.
BUILDINGS	4,670	4,670
DRIVEWAYS	1,688	3,646
PATIO/WALKS	1,403	1,403
RAVINE ROAD	5,816	5,816
IMPERVIOUS	13,577	15,535
PERVIOUS	44,627	42,669
TOTAL	58,204	58,204

EARTHWORK QUANTITIES

VOLUME	DEPTH	FEET
C.Y.	3.3	1
CUB. FT.		

- SCOPE OF WORK:
- REPLACE FAILED BRIDGE, CONSTRUCT WINGWALLS.
 - REPAVE EXISTING DRIVEWAY, CURB AND A.C. BERM.
 - INSTALL DRAINAGE SWALE AND ENERGY DISSIPATER.
 - INSTALL DRAINAGE SWALE AND ENERGY DISSIPATER.



LEGEND

EXISTING: BUILDING, MONUMENT, POLE LINE, STORM DRAIN MANHOLE, FIRE HYDRANT, WATER VALVE, CLEANDRY, BOUNDARY, CENTERLINE, LIMIT OF EASEMENT, CURB AND GUTTER, EDGE OF PAVEMENT, CONTOUR, SANITARY SEWER, FLOW LINE, ELECTRICAL, GAS, WATER WELLS

PROPOSED: BUILDING, MONUMENT, POLE LINE, STORM DRAIN MANHOLE, FIRE HYDRANT, WATER VALVE, CLEANDRY, BOUNDARY, CENTERLINE, LIMIT OF EASEMENT, CURB AND GUTTER, EDGE OF PAVEMENT, CONTOUR, SANITARY SEWER, FLOW LINE, ELECTRICAL, GAS, WATER WELLS

NO.	DATE	REVISION	BY	DATE	SCALE	DATE RECEIVED	NO.

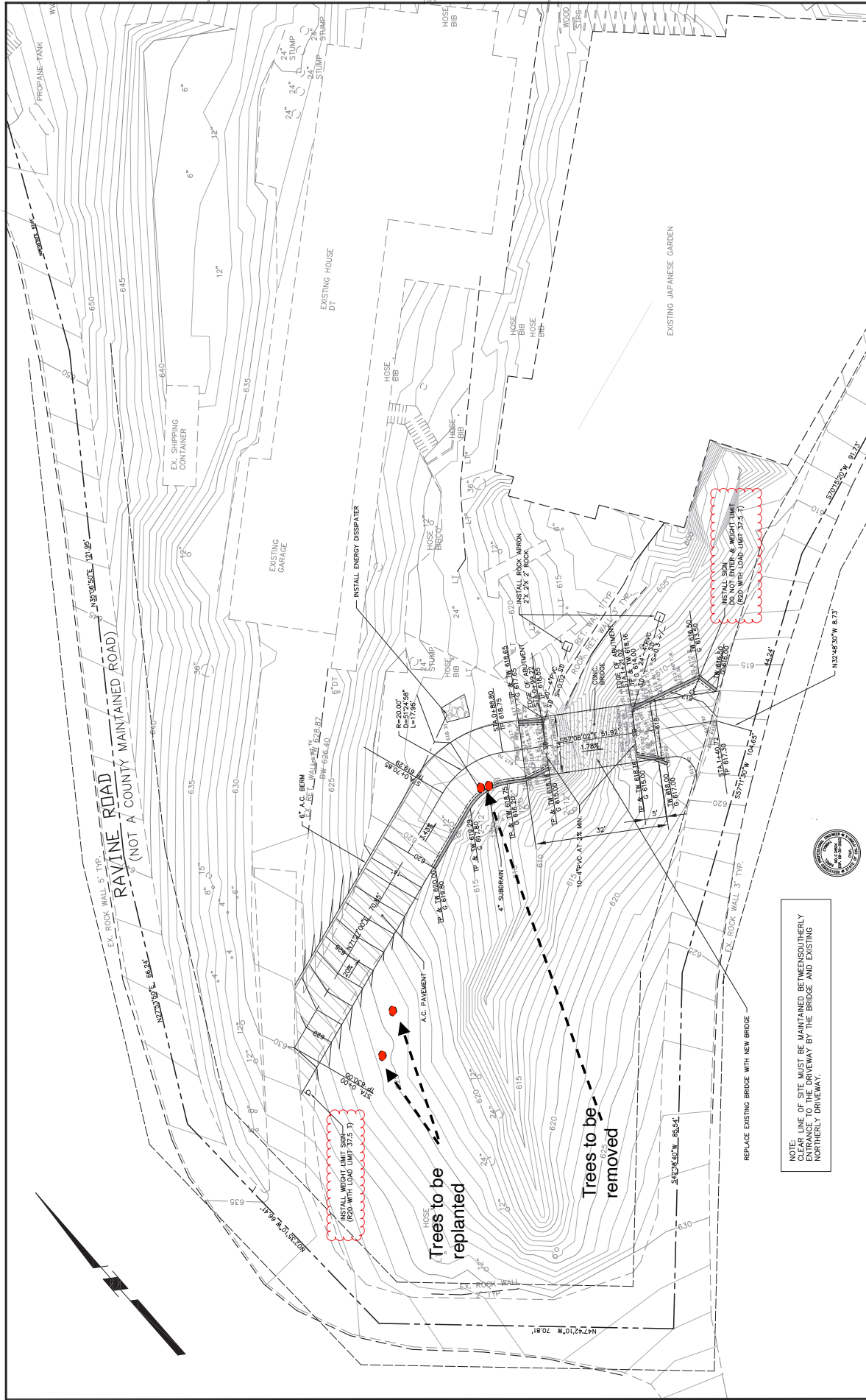
SCALE: HOR. 1"=50'
 VERT. 1"=10'

DESIGNED BY: KAREL DYMBAL
 CHECKED BY: KAREL DYMBAL
 DATE: 08/28/2018

WESTFALL ENGINEERS, INC.
 14589 BIG BASTIN WAY, SARATOGA, CA 95070 (408) 867-0244

TITLE SHEET
 LANDS OF NGUYEN
 15897 RAVINE ROAD, SANTA CLARA COUNTY

JOB NO. 2018-091
 SHEET C1 OF 15



NO.	BY	DATE	REVISION

DATE:	MARCH 2023
SCALE:	HOR. 1"=10'
VERT.:	1"=5'
DESIGNED BY:	KAROL CYMBAL, REE 34534
CHECKED BY:	DATE
PREPARED BY:	DATE

WESTFALL ENGINEERS, INC.
 14583 BIG BASIN WAY, SARATOGA, CA 95070 (408)867-0844

**ROAD AND BRIDGE REPAIR
 LANDS OF NGUYEN**
 15891 RAVINE ROAD, SANTA CLARA COUNTY

JOB NO. 2019-091
 SHEET OF 15







