

SITE PLAN
1" = 20'-0"



A EXISTING NORTH WALL OF BUILDING
6" = 1'-0"



B PROPOSED NORTH WALL OF BUILDING
6" = 1'-0"

PROJECT DESCRIPTION	
THE SCOPE OF THIS PROJECT INCLUDES EXTERIOR IMPROVEMENTS:	
•	REPAINT THE FRONT BUILDING FACADE, DOORS & EXPOSED CONCRETE WALLS.
•	WOOD SLAT ENTRY CANOPY
•	NEW SIGNAGE AT ENTRY CANOPY
•	REMOVE <E> METAL ROLL-UP DOOR & REPLACE WITH GLASS BI-FOLD & PEDESTRIAN ENTRY DOOR.
•	NEW ENTRY PAVING.
•	UPGRADE ENTRY LIGHTING.
•	NEW PLANTING AREA & BUILT IN WOOD BENCH.
•	NEW METAL MECHANICAL SCREENING.

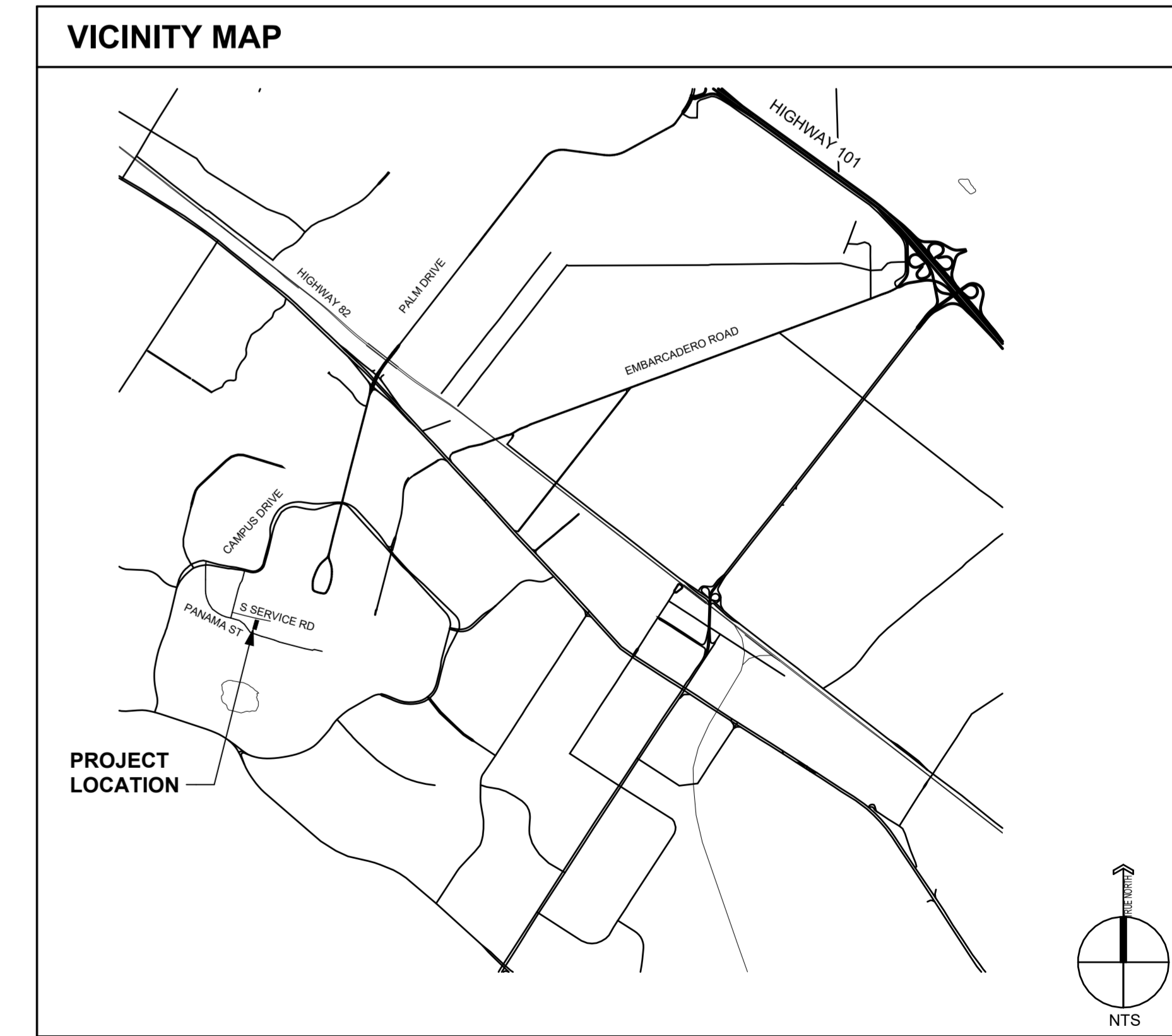
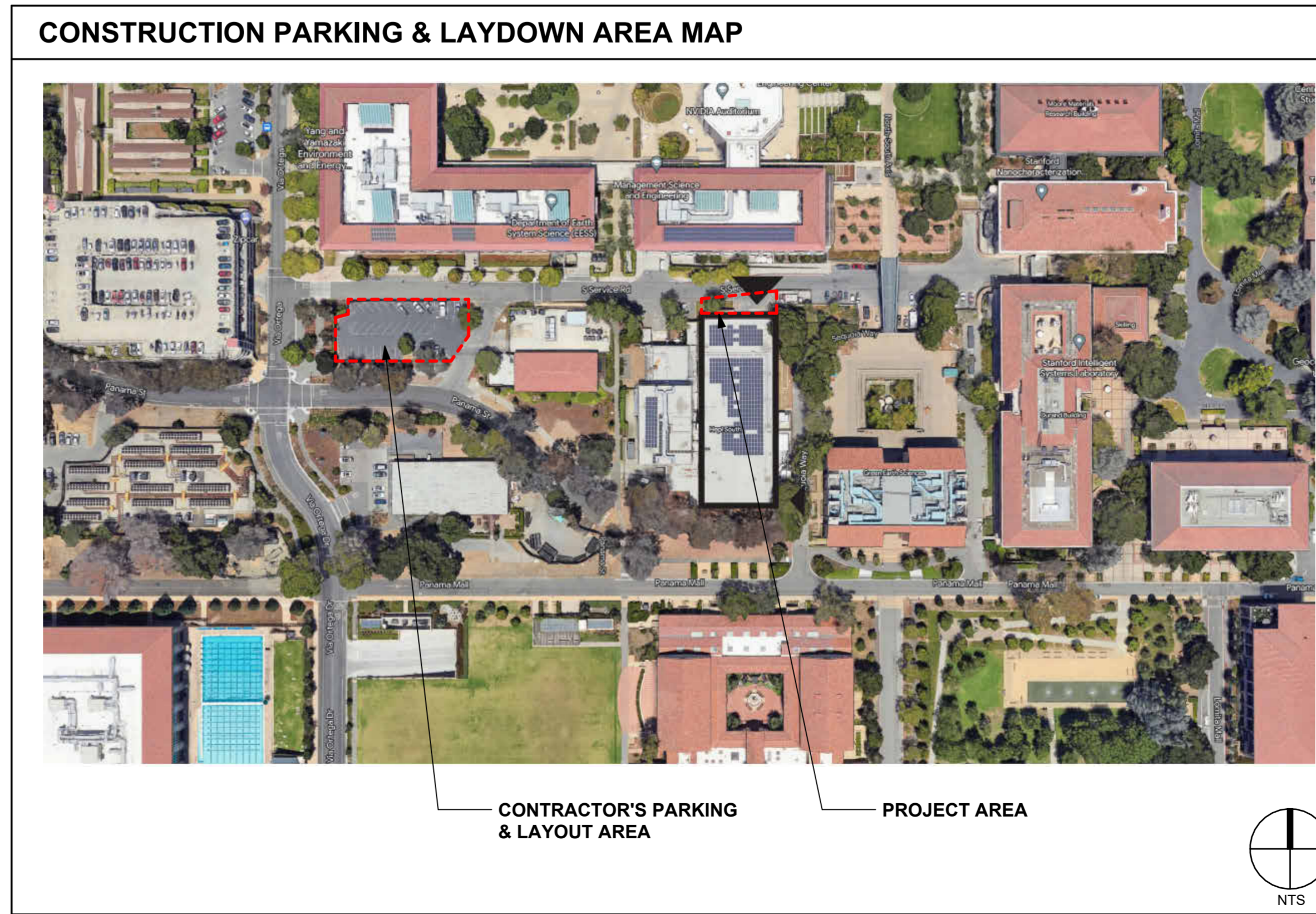
IMPERVIOUS CALCULATIONS	
IMPERVIOUS AREA REMOVED:	143 SF
PERMEABLE AREA ADDED:	143 SF

GUP CALCULATIONS	
GUP AREA REMOVED:	0 SF
GUP AREA ADDED:	0 SF
NET CHANGE:	0 SF

DRAWING INDEX	
P1.0	TITLE SHEET
P1.1	GUP INFORMATION MAPS
P1.2	FLOOR PLANS & EXTERIOR ELEVATIONS
P1.3	SITE / BUILDING LIGHTING

CUT & FILL CALCULATIONS	
CUT:	56.1 CUBIC YARD
FILL:	56.1 CUBIC YARD


PROJECT DATA	
BUILDING AREA:	22,690 SF
LOWEST LEVEL (INCLUDING TUNNELS):	1,129 SF
MEZZANINE LEVEL 1:	5,800 SF
MEZZANINE LEVEL 2A & 2B:	969 SF
GROUND FLOOR:	
TOTAL:	30,588 SF
AREA OF WORK EXTERIOR:	1,341 SF
TOTAL:	1,341 SF
CONSTRUCTION TYPE:	
BUILDING - END STATION #3	IA
<E> MEZZANINE	IB
ELECTRICAL & MACHINE BUILDING	IIB
STORIES:	2 + 2 MEZZANINE LEVELS
OCCUPANCY:	B
BUILDING CODE:	2022 CBC
FIRE CODE:	2022 CFC
MECHANICAL CODE:	2022 CMC
ELECTRICAL CODE:	2022 CEC
PLUMBING CODE:	2022 CPC
ENERGY CODE:	2022 CA ENERGY CODE
GREEN CODE:	2022 CAL GREEN BLDG CODE
MUNICIPAL CODE:	COUNTY OF SANTA CLARA
SPRINKLERED:	FULLY SPRINKLERED
PARKING:	<E> PARKING
PARCEL NUMBER:	APN 142-05-054



2022_149

architect
CAS Architects, Inc.
 1987 Leghorn St, Ste 101
 Mountain View, CA 94043
 650.967.6600
 www.casarch.com
 Richard A. Smith
 dick@casarch.com

architect
Jensen Architects
 833 Market Street
 San Francisco, CA 94103-1827
 415.348.9650
 Dean Orr
 deano@jensen-architects.com

owner / tenant

Stanford University
 340 Bonair Siding Road
 Stanford, CA 94305-7208
 David Kirk
 dgkirk@stanford.edu

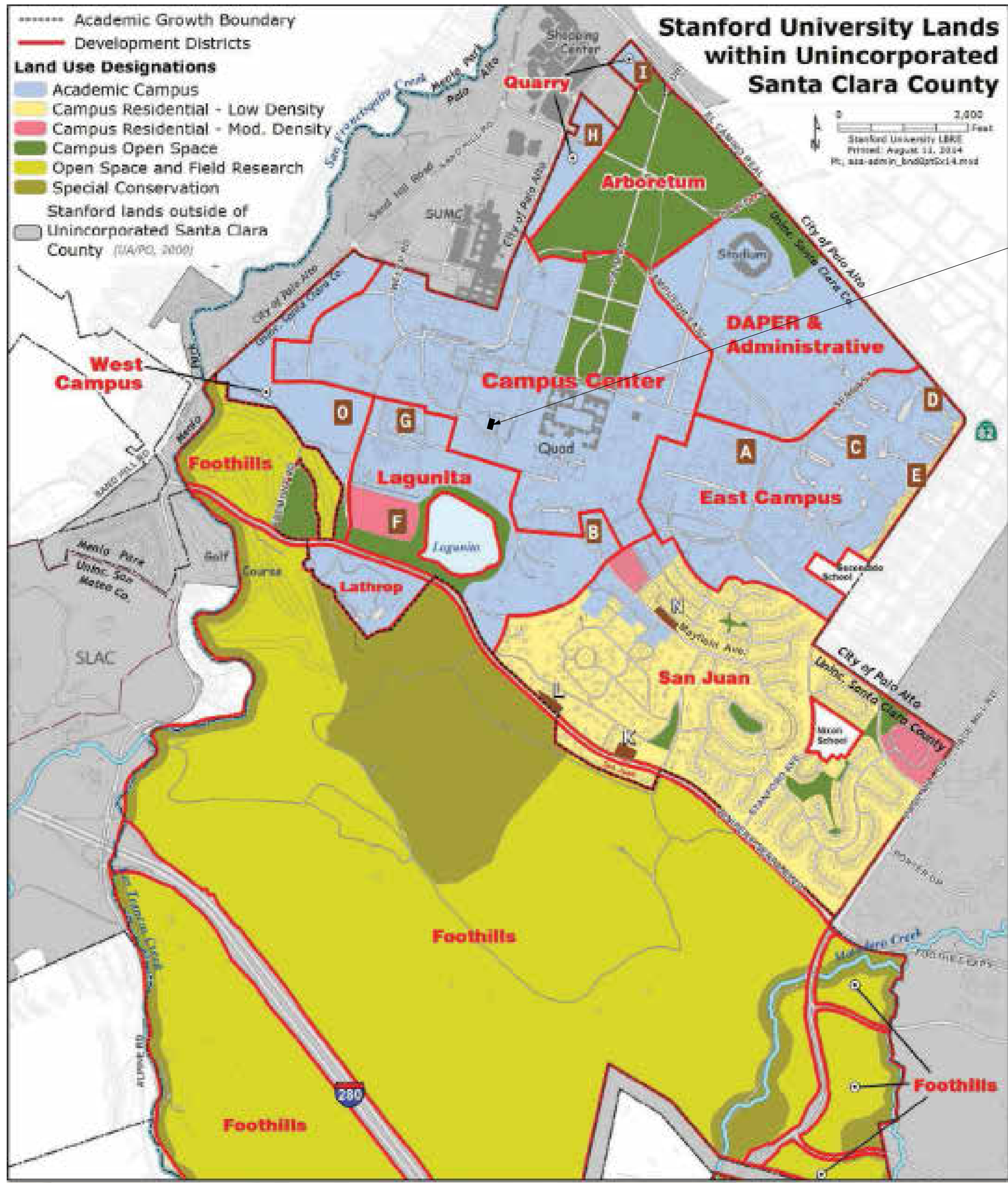
END STATION 3 - EXTERIOR IMPROVEMENT

491 SOUTH SERVICE ROAD,
 STANFORD, CA 94305

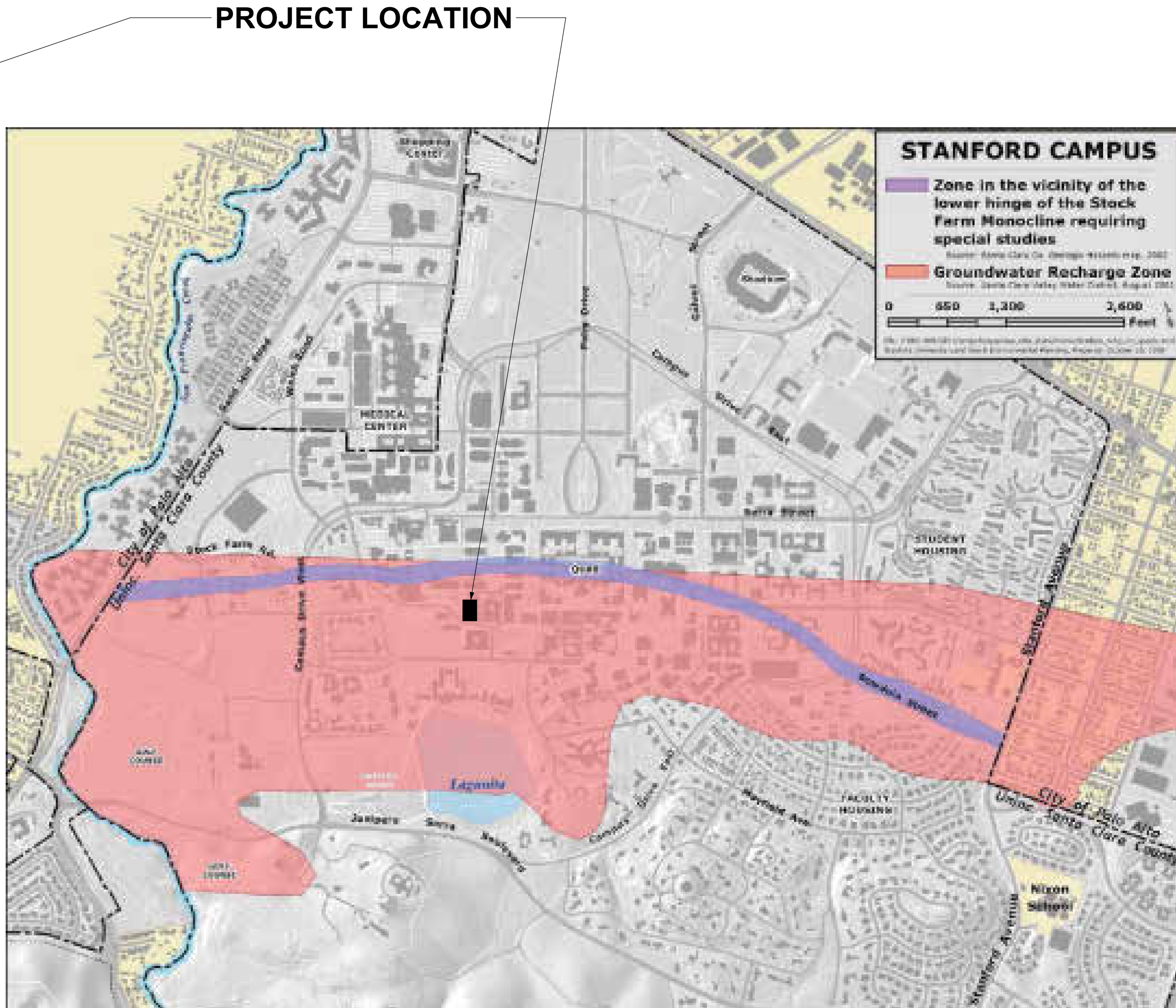
STANFORD QUAD & BUILDING NUMBER 04-270

Date: 06.07.2023

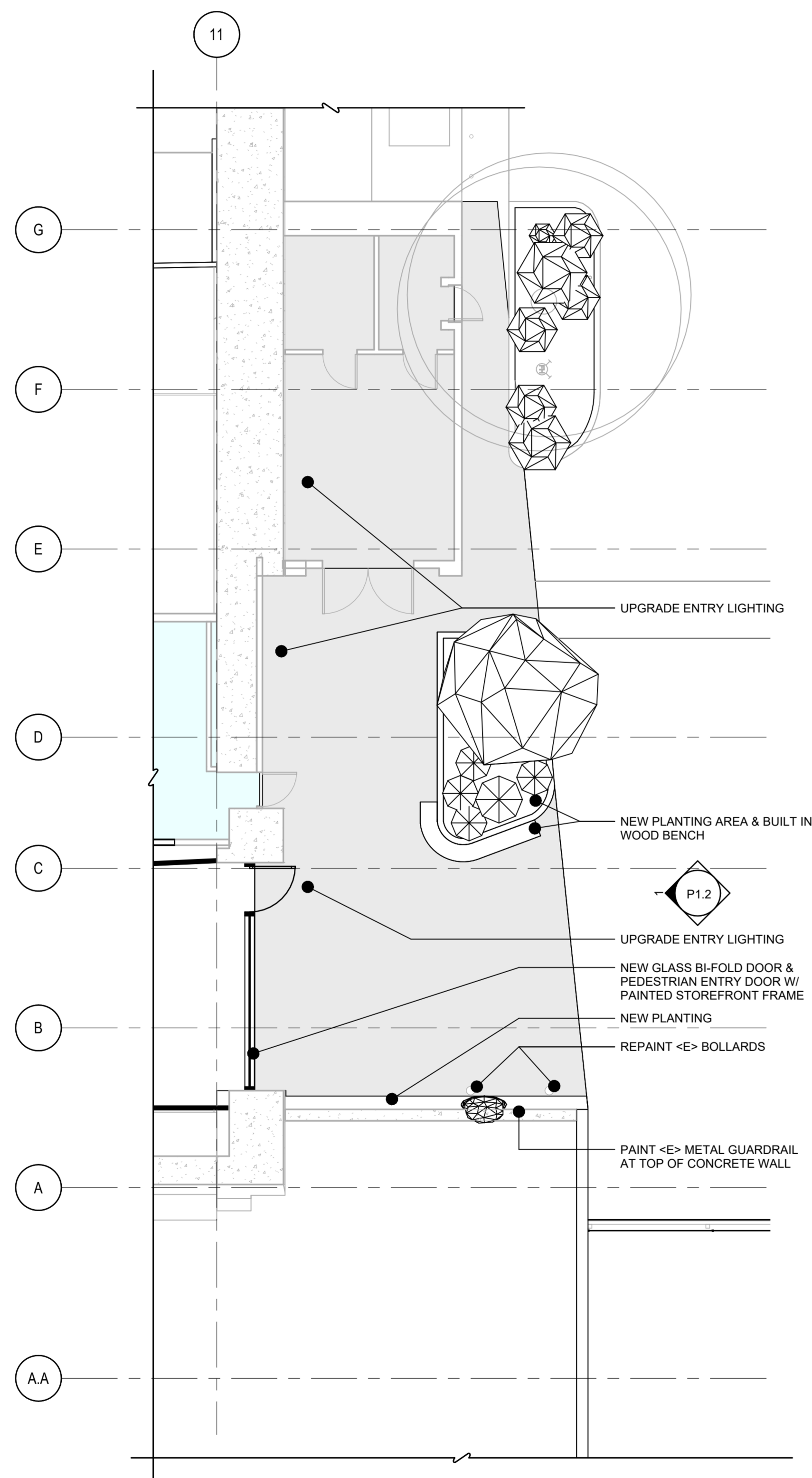
TITLE SHEET
 P1.0



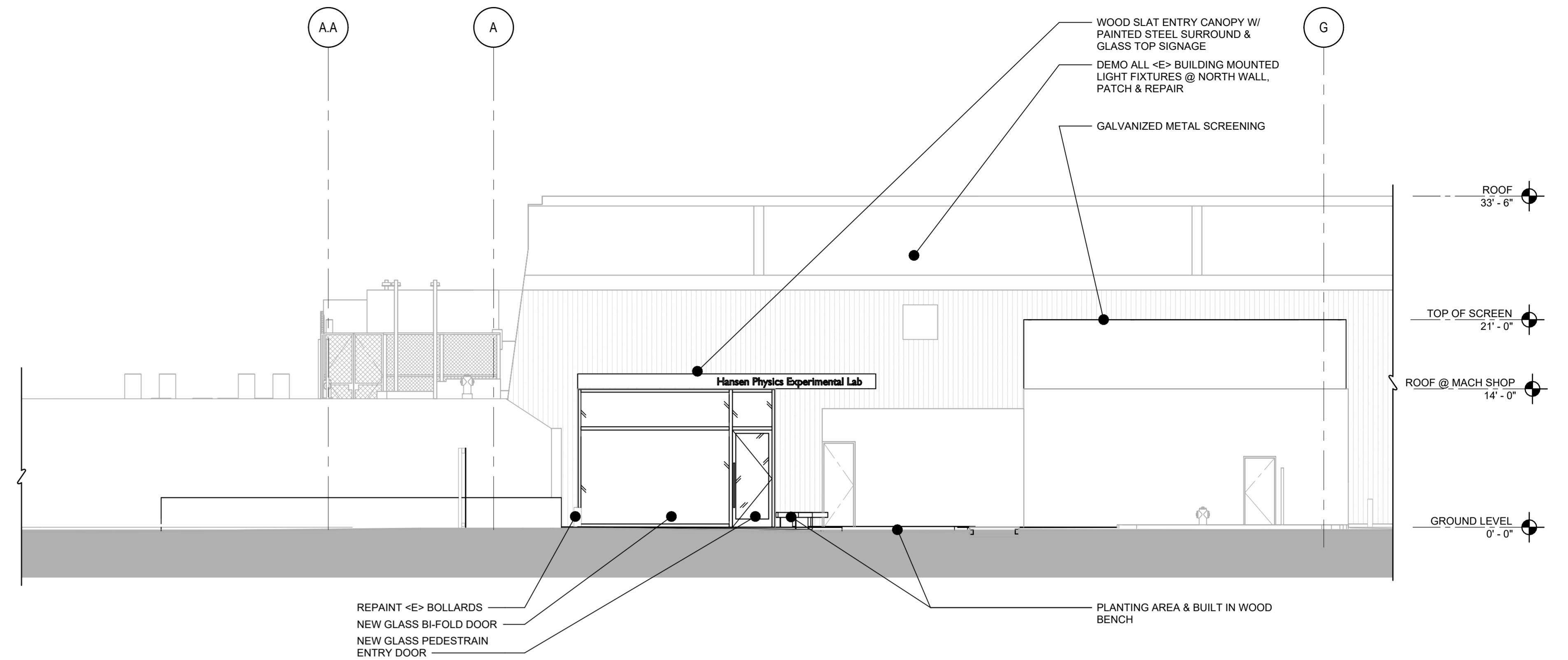
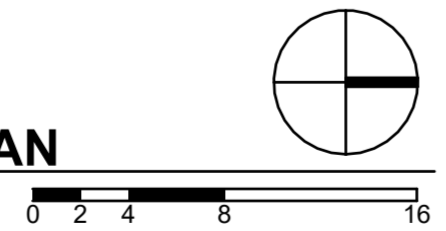
COMMUNITY PLAN LAND USE DESIGNATIONS
1/12" = 1'-0"



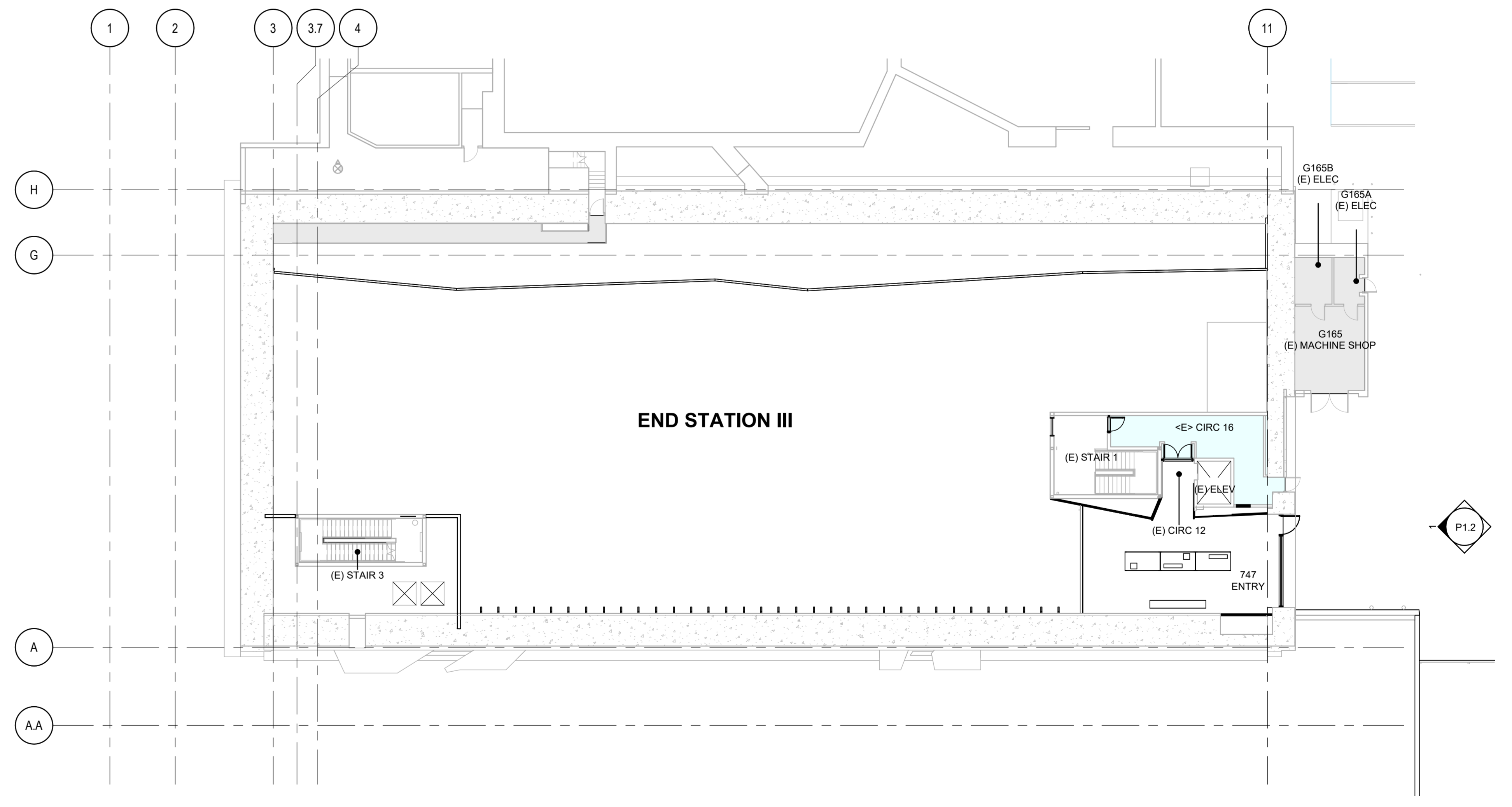
GROUNDWATER RECHARGE / STOCKFARM MONOCLINE



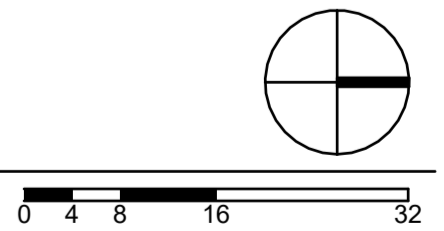
A PARTIAL ENLARGED NORTH ENTRY PLAN
1/8" = 1'-0"



1 NORTH EXTERIOR ELEVATION
1/8" = 1'-0"



GROUND LEVEL PLAN
1/16" = 1'-0"



ARTISTAR LED (REMOTE TRANSFORMER) IP66 RATED

DATE: PROJECT: TYPE:

CATALOG NUMBER LOGIC:

CATALOG NUMBER LOGIC
Example: B-AR-LED-RM-e64-NSP-A7-WHP-12-11-B-3-PP

MATERIAL
(Mount) - Aluminum B-Brass S-Stainless Steel

SERIES
AR - Artistar

SOURCE
LED - with Integral Dimming Driver (25W min. load when dimmed)*

HOUSING
e64 - Remote Transformer

LED TYPE
e64 - 7W LED/2700K e79 - 7W LED/2700K 90CRI
e65 - 7W LED/3000K e80 - 7W LED/3000K 90CRI
e66 - 7W LED/4000K e81 - 7W LED/3500K 90CRI
e78 - 7W LED/Amber

OPTICS
NSP - Narrow Spot (3°) MFL - Medium Flood (23°)
SP - Spot (6°) WFL - Wide Flood (37°)

ADJUST-LUMEN OUTPUT INTENSITY**
A0 (Standard) A8, A7, A6, A5, A4, A3, A2, A1

FINISH (See page 2 for full-color swatches)
Standard Finish (BZP, BZW, BWP, WHP, WHP, SAP, VER)
Premium Finish (ABP, AMG, AQW, BCM, BGE, BPP, CAP, CML, CRM, HUG, NBP, OCP, RML, SDS, SML, TWS, WCP, WSR)
Also available in RAL Finishes
Brass Finishes (MAC, POL, MIT)
Stainless Steel Finishes (MAC, POL)

LENS TYPE
12 - Soft Focus 13 - Rectilinear

SHIELDING
11 - Honeycomb Baffle

CAP STYLE
A - 45°
B - 90°
C - Flush Lens
D - 45° Less Weephole (Interior use only)
E - 90° Less Weephole (Interior use only)
F - 90° with Flush Lens

BASE HEIGHT
3" (Standard), 6", 12", 18", & 24" with Anchor Base

MOUNTING OPTIONS
PP - 18" Power Pipe Stake Mount
SF - Stability Flange (For use with Power Pipe)
WM - Wall or Ceiling Mount with 2" dia. Machined Canopy***

*Designed for use with LED transformer. Requires magnetic low voltage dimmer.
**Please use Adjust-Lumen photometry to determine desired intensity.
***Base height limited to 6" max. with Brass and Stainless Steel Canopy.

B-K LIGHTING MADE IN THE USA 888-436-8800 | INFO@BKLIGHTING.COM | BKLIGHTING.COM

NITE STAR II LED IP66 RATED

DATE: PROJECT: TYPE:

CATALOG NUMBER LOGIC:

CATALOG NUMBER LOGIC
Example: B-NSI-LED-e64-SP-A9-SAP-12-11-362SL

MATERIAL
(Mount) - Aluminum B-Brass S-Stainless Steel

SERIES
NSI - Nite Star II

SOURCE
LED - with Integral Dimming Driver (25W min. load when dimmed)*

LED TYPE
e64 - 7W LED/2700K e79 - 7W LED/2700K 90CRI
e65 - 7W LED/3000K e80 - 7W LED/3000K 90CRI
e66 - 7W LED/4000K e81 - 7W LED/3500K 90CRI
e78 - 7W LED/Amber

OPTICS
NSP - Narrow Spot (3°) MFL - Medium Flood (23°)
SP - Spot (6°) WFL - Wide Flood (37°)

ADJUST-LUMEN**
A0 (Standard) A8, A7, A6, A5, A4, A3, A2, A1

FINISH (See page 2 for full-color swatches)
Standard Finish (BZP, BZW, BWP, WHP, WHP, SAP, VER)
Premium Finish (ABP, AMG, AQW, BCM, BGE, BPP, CAP, CML, CRM, HUG, NBP, OCP, RML, SDS, SML, TWS, WCP, WSR)
Also available in RAL Finishes
Brass Finishes (MAC, POL, MIT)
Stainless Steel Finishes (MAC, POL)

LENS TYPE
12 - Soft Focus 13 - Rectilinear

SHIELDING
11 - Honeycomb Baffle

OPTION
S02L - Knuckle Mounting System***

MOD OPTIONS
5 - 5 Ft Leads
25 - 25 Ft Leads

*Designed for use with LED transformer. Requires magnetic low voltage dimmer.
**Specify wireless or manual control. Please see Adjust-Lumen photometry to determine desired intensity.
***The 362SL cost is already included in the price of LPM LPM dual and Power Canopy.

B-K LIGHTING MADE IN THE USA 888-436-8800 | INFO@BKLIGHTING.COM | BKLIGHTING.COM

KURV-SW-HE Q-CAP Flexible Fixtures

KURV-SW-HE is a fully encapsulated flexible linear LED fixture suitable for use in direct viewing applications because diodes are not visible due to its unique shape. KURV has a built-in parabolic curve, which allows the fixture to push out asymmetrical light with its internal reflector. Because of its dry and wet rating, it is perfect for not only indoor use but also as outdoor accent lighting, especially when the light needs to be wrapped around a mass. KURV-SW-HE encapsulates our one step, one bin 24-volt static white high efficacy LED strips in polyurethane. It is offered in three different outputs: standard output (1.5W/ft), high output (3.0W/ft), and very high output (6.0W/ft). Available in a clear finish, where diodes are visible, or a translucent finish, where light is diffused.

Output (Calculated L70 = 30000 hours)

CCT	SO Standard Output 1.5 W/ft			HO High Output 3.0 W/ft			VHO Very High Output 6.0 W/ft		
	LM	CR	ENCL	LM	CR	ENCL	LM	CR	ENCL
2700K	133	93	133	272	93	272	544	93	544
3000K	150	96	150	301	96	301	602	96	602
4000K	159	98	159	318	98	318	636	98	636

Dimensions
Profile (Standard) Profile (Seamless Bare wire) Profile (Seamless Bare) 1.5" x 0.5" x 0.25"

Wiring Detail
Available in 2" increments from 12" - 101"

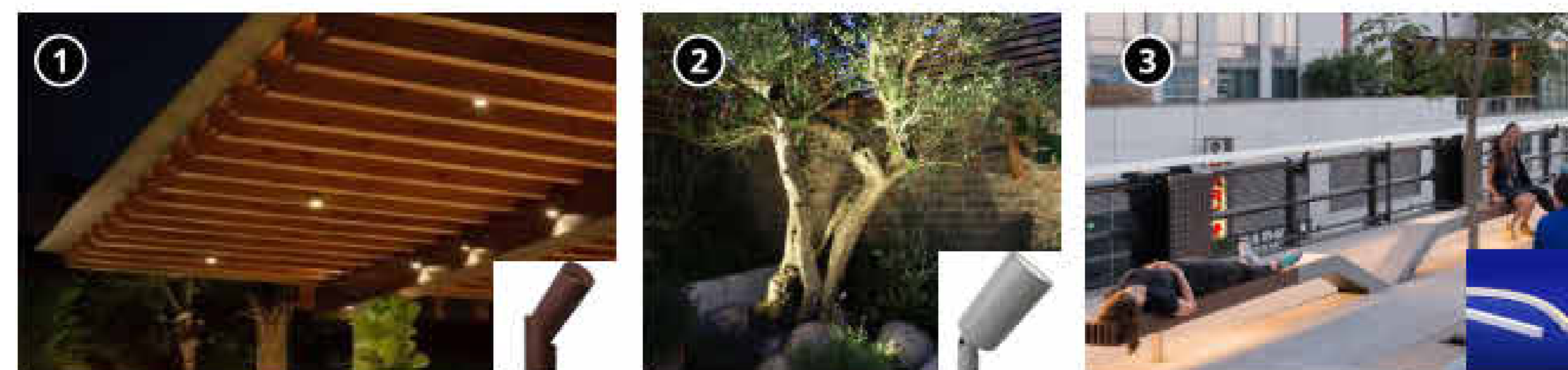
Part Number Builder

Product: KURV-SW-HE
Mounting: []
Rated: []
CCT: []
Output: []
Lens: []
Type: []
Connector/Wire In: []
Connector/Wire Out: []
End Cap (No leads): []
Length (ft): []

Flexibility
• 5 year warranty
• Side Bend
• IK10 impact rated
• Data subject to change, all data has +/- 5% tolerance
• PPS-FT is to be cut at Q-Trans requested length

© 2022 Q-Trans Inc. All rights reserved | 155 Hill St, Milford, CT 06460 | 203-967-8777 | info@q-trans.com | www.q-trans.com

Exterior - Entrance



General Lighting Approach & Goals

1. Create welcoming entrance experience
2. Highlight landscape
3. Provide adequate light levels for safety

Additional Lighting Layers

1. Trellis downlight
2. Tree Uplights
3. Under Bench Lighting

END STATION 3 - EXTERIOR IMPROVEMENT

491 SOUTH SERVICE ROAD,
STANFORD, CA 94305

STANFORD QUAD & BUILDING NUMBER 04-270