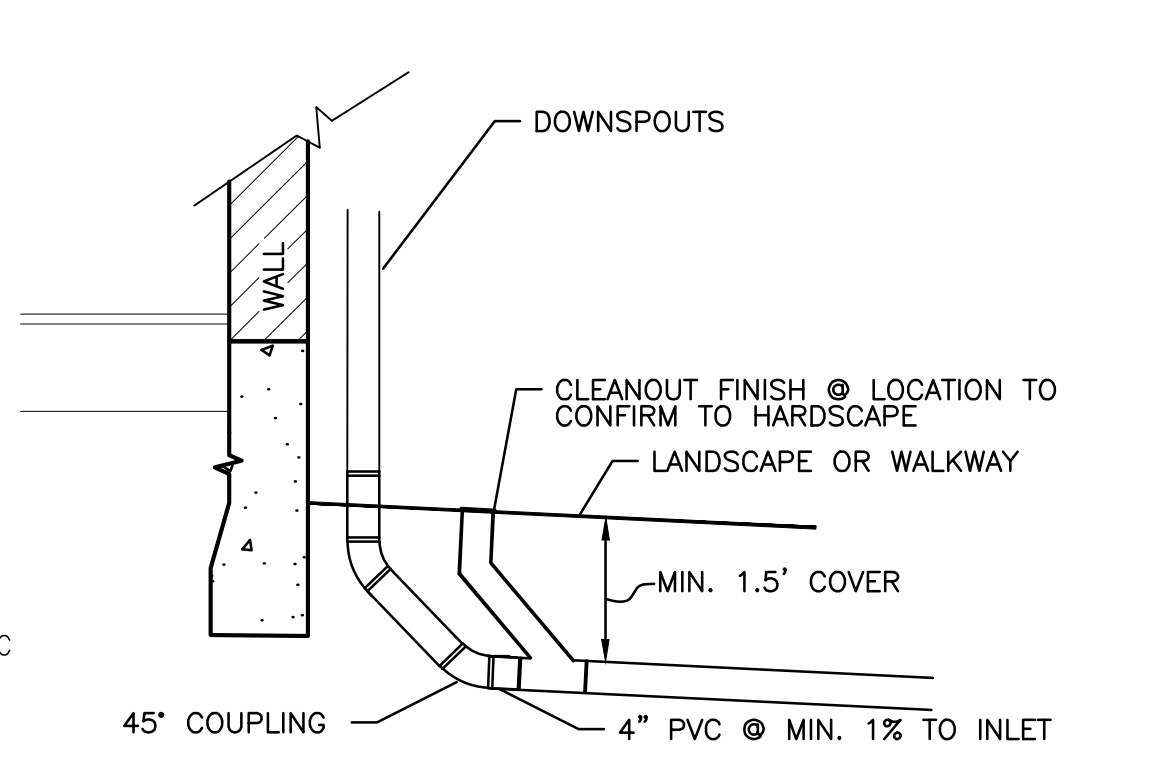
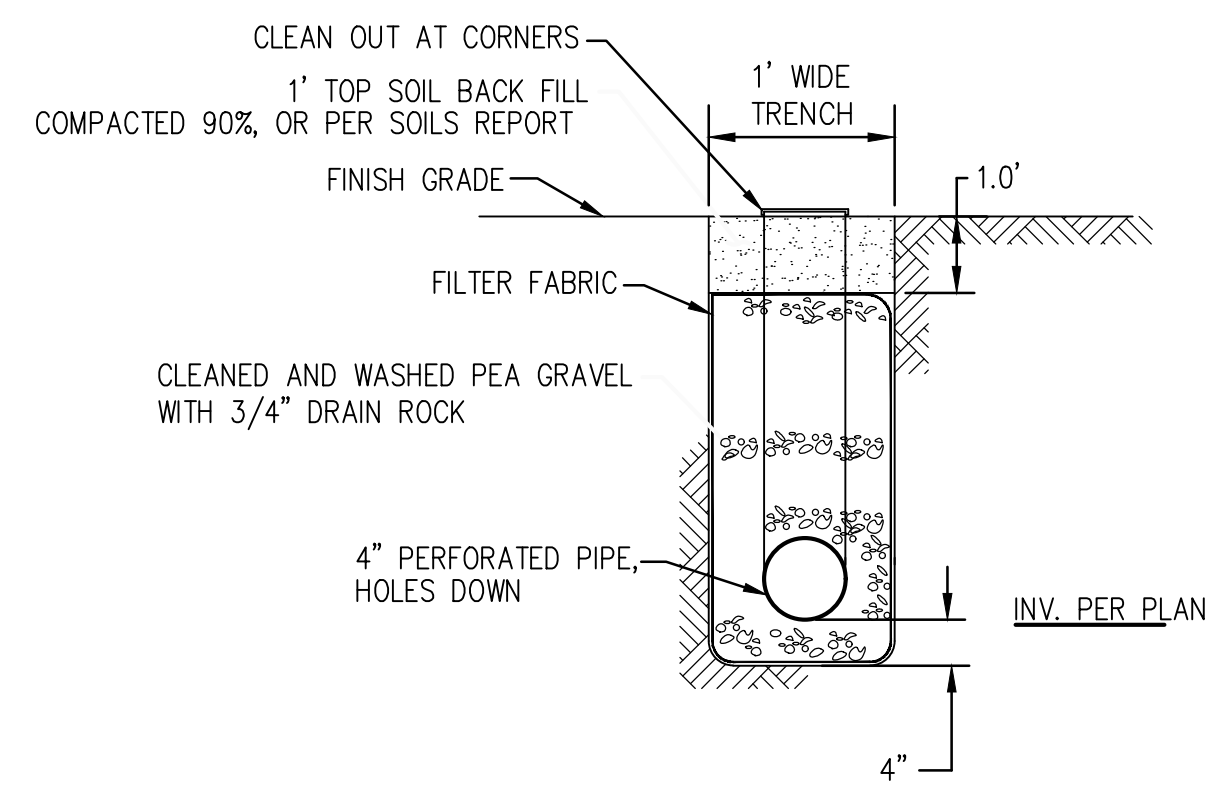


EARTH SWALE DETAIL
N.T.S.

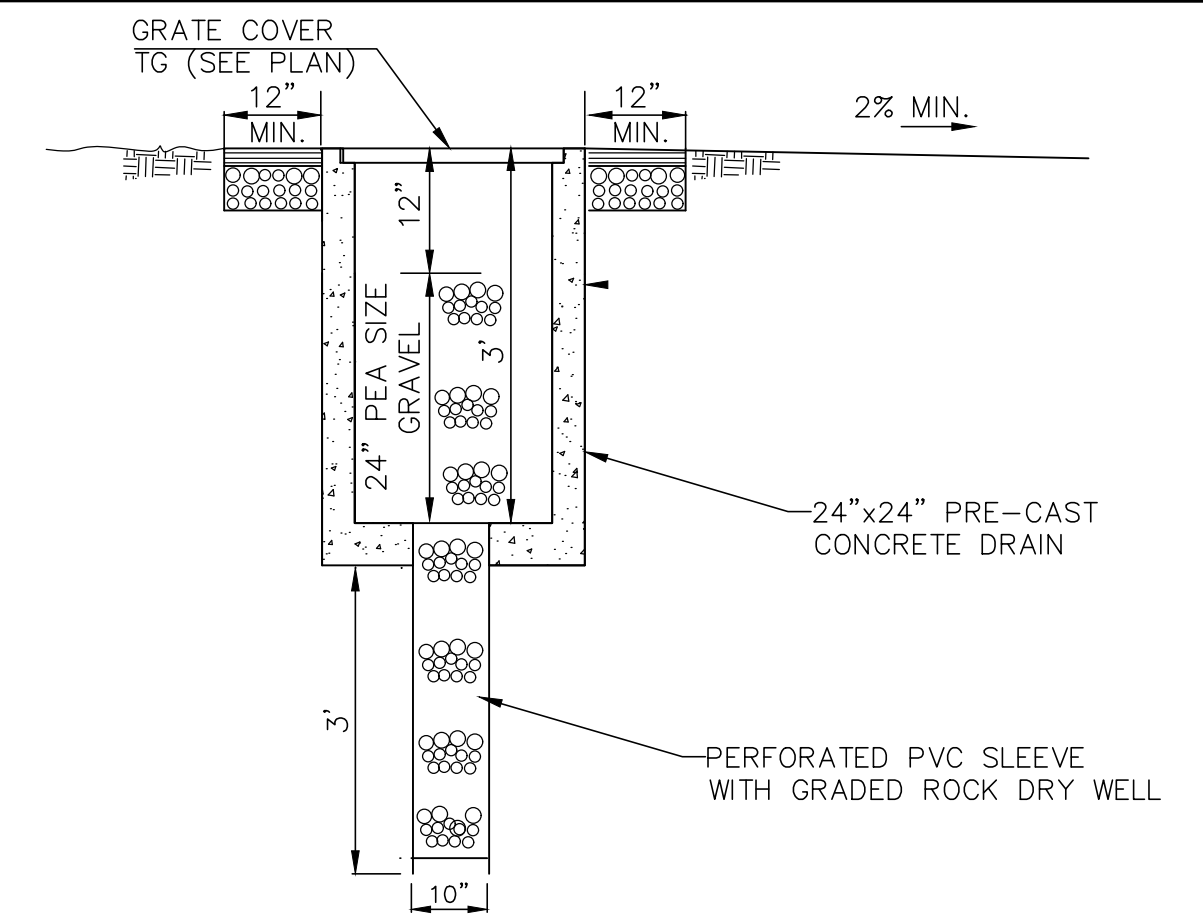
ROCK ENERGY DISSIPATOR DETAIL
N.T.S.



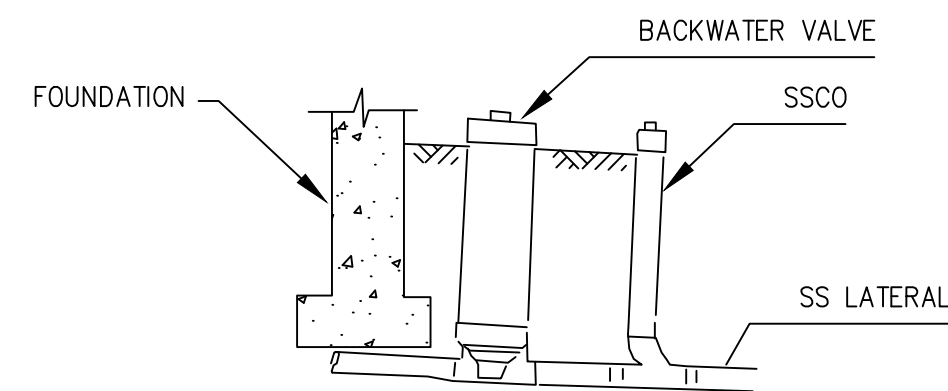
ROOF DOWN-SPOUT CONNECTION
N.T.S.



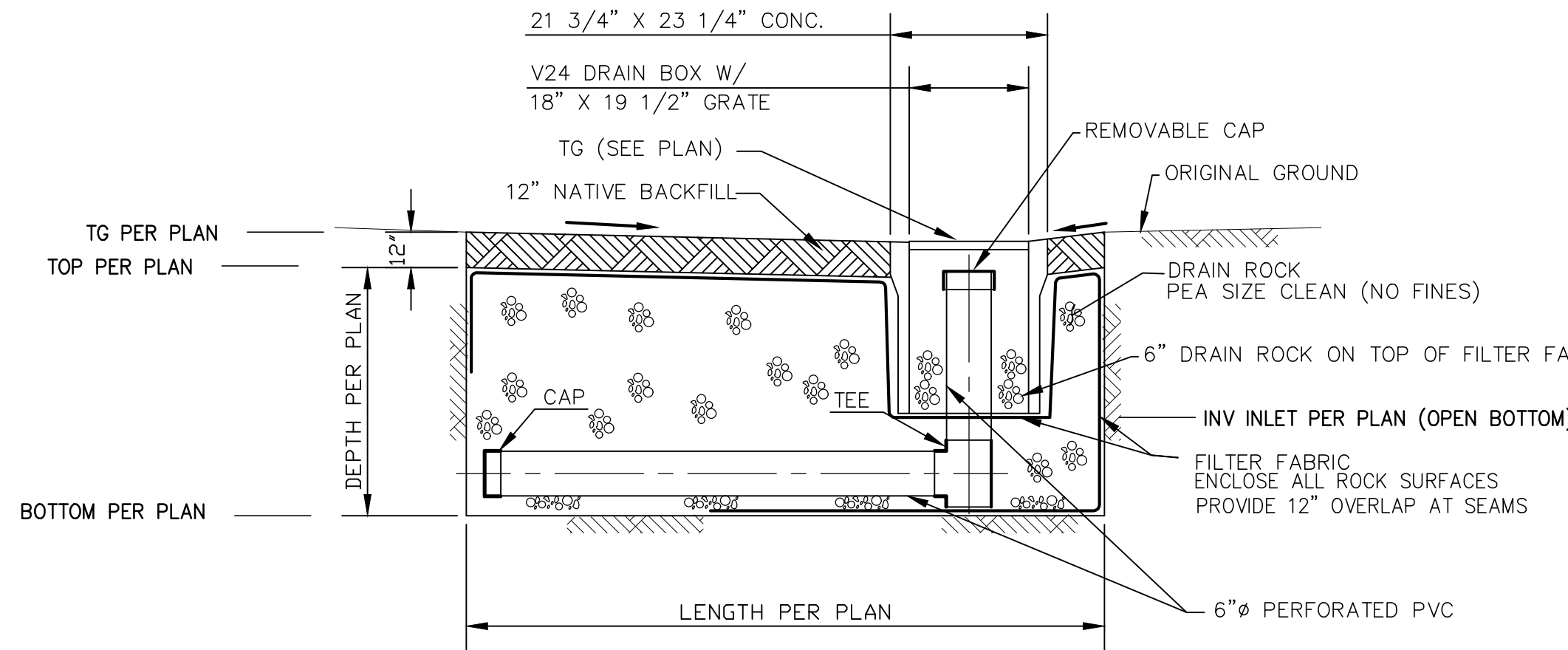
SUBDRAIN TRENCH DETAIL
N.T.S.



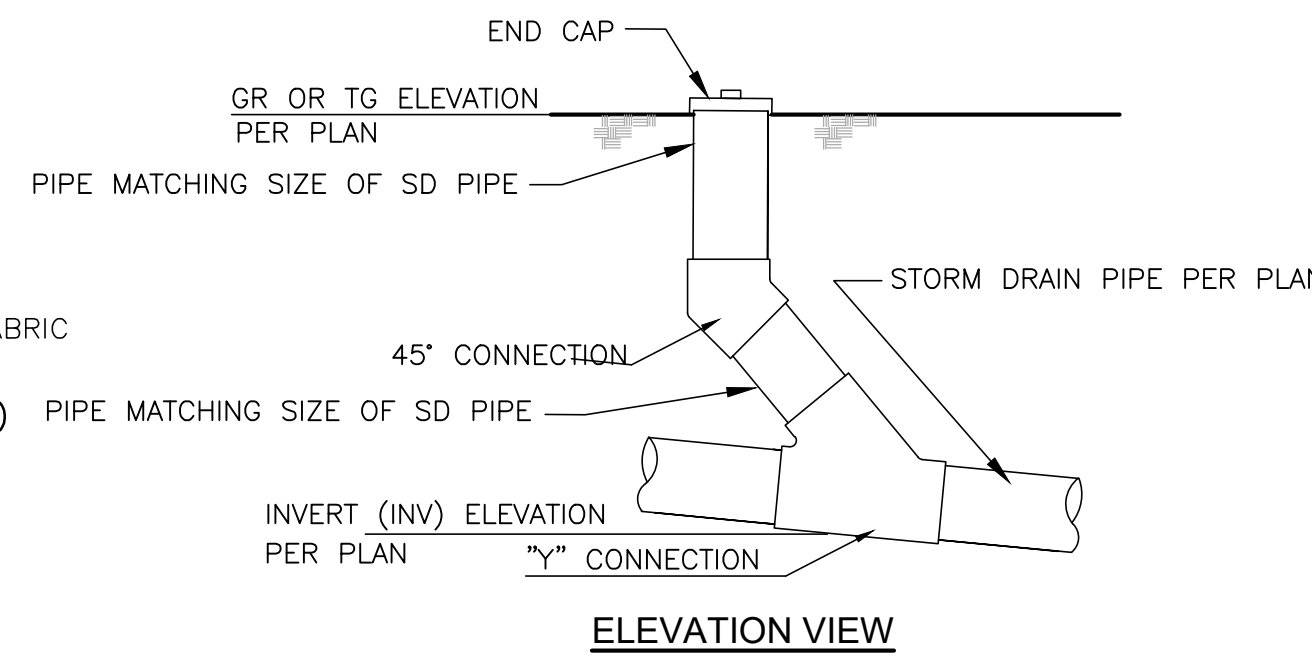
INLET WITH DRY WELL
N.T.S.



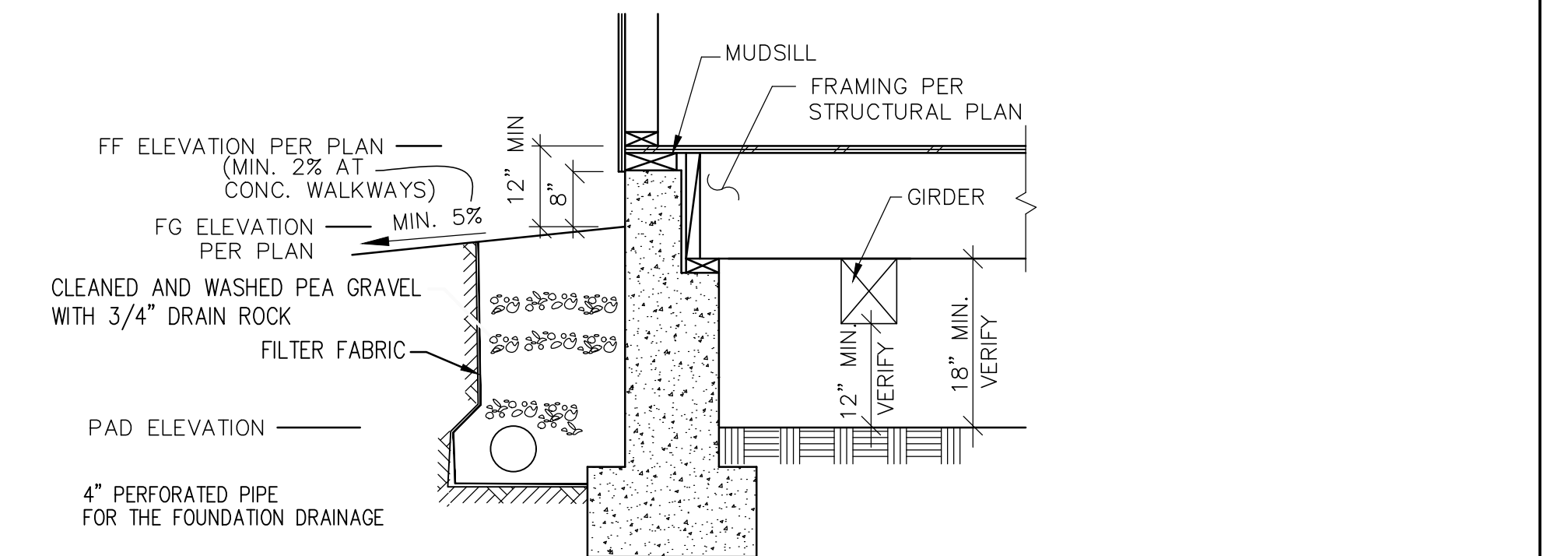
SANITARY SEWER BACKFLOW PREVENTER DETAIL
N.T.S.



INFILTRATION DEVICE
ELEVATION VIEW- NTS

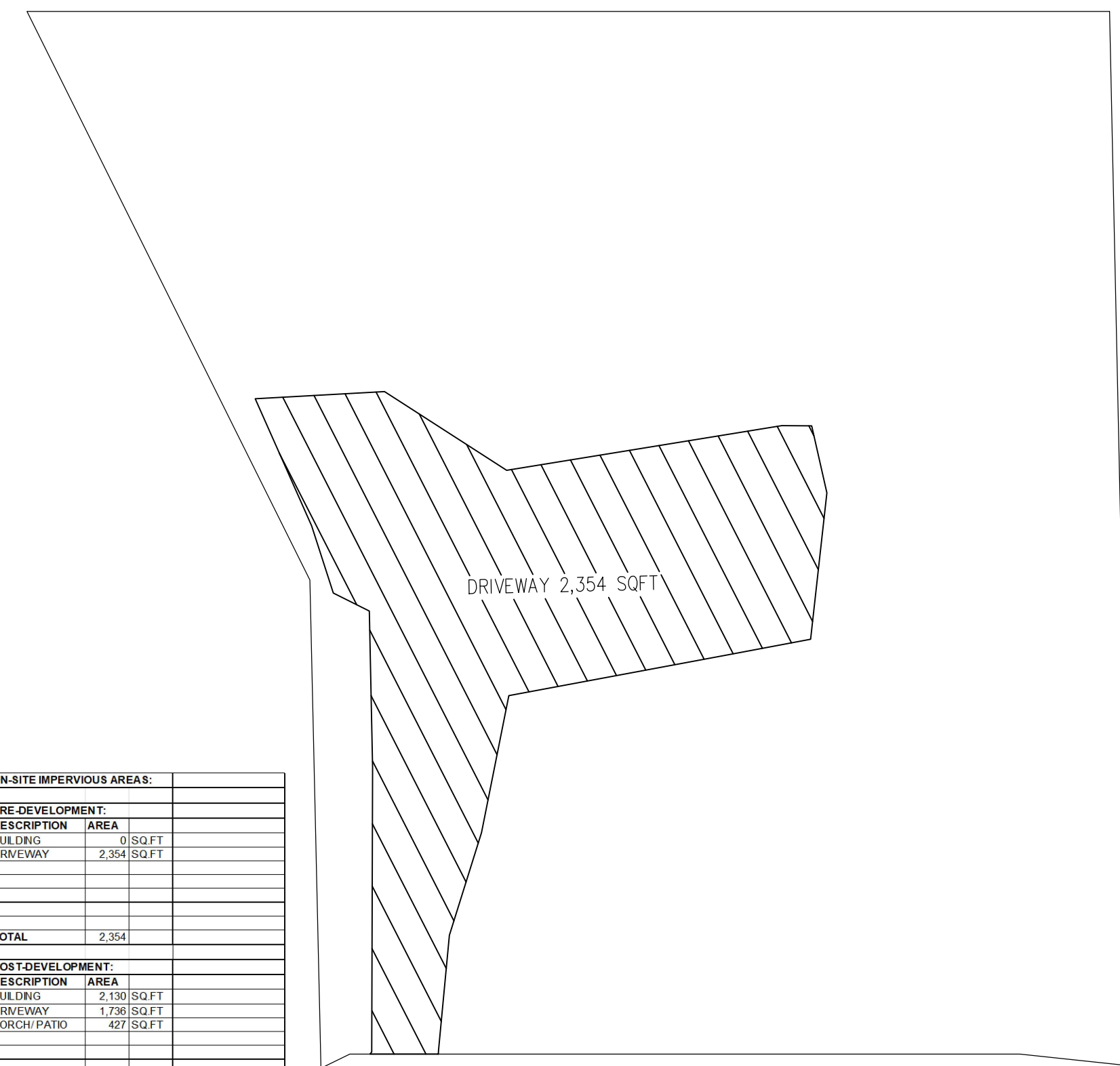


STORM DRAIN CLEANOUT DETAIL
N.T.S.

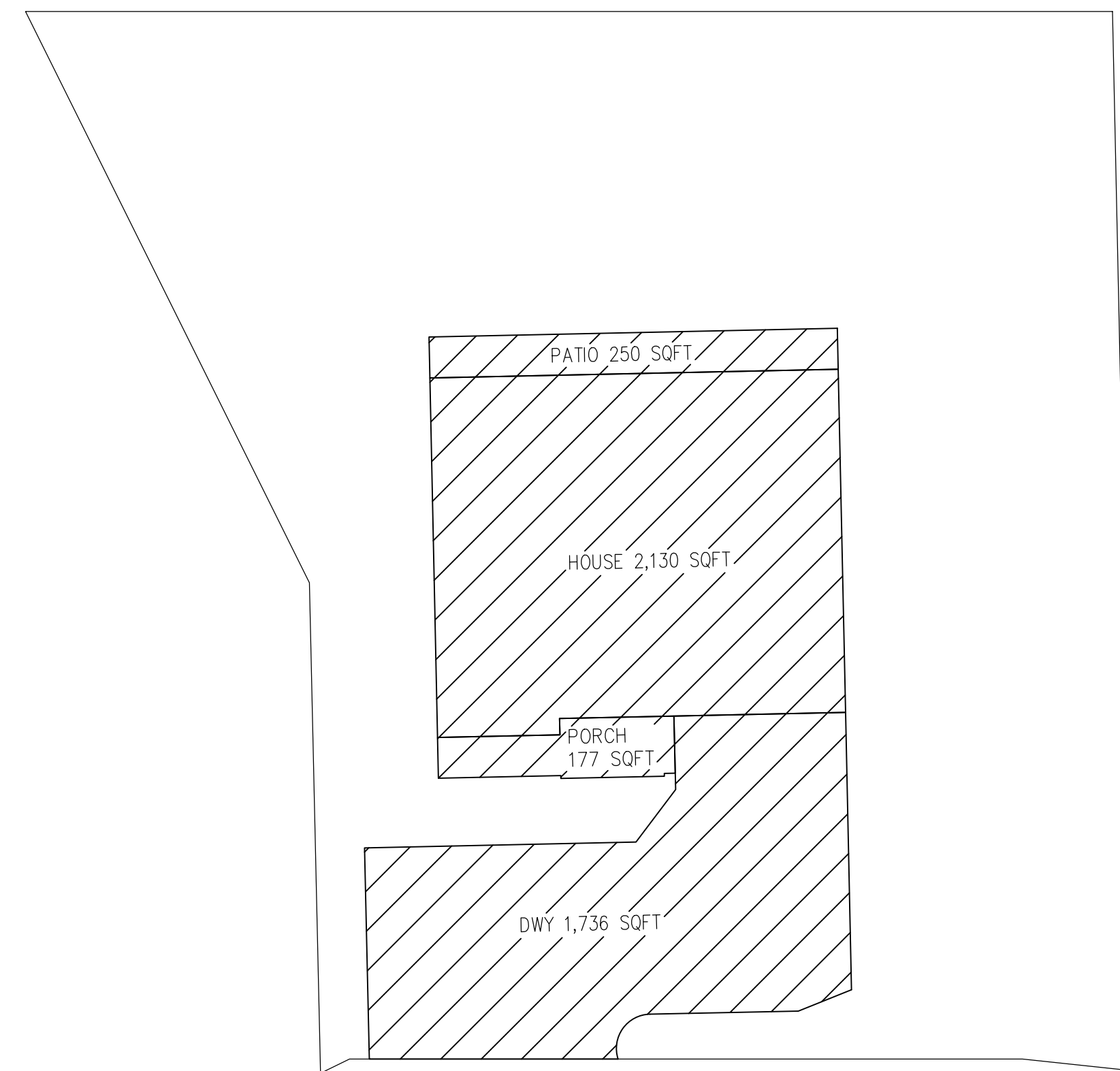


RAISED FOUNDATION CONCEPTUAL DETAIL
N.T.S.

PERVIOUS AND IMPERVIOUS AREA
N.T.S.

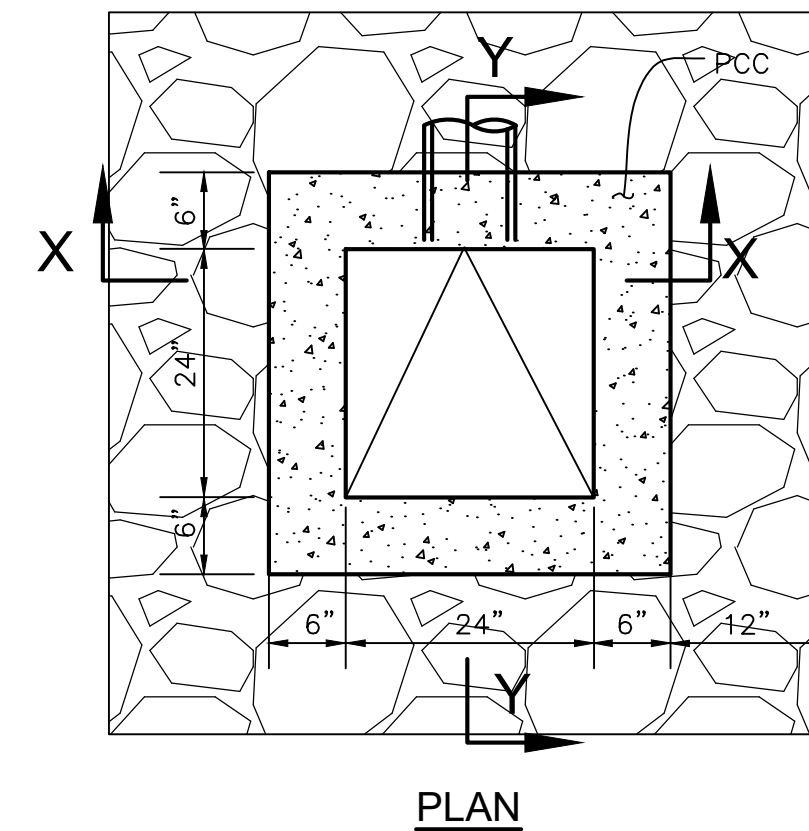


EXISTING IMPERVIOUS AREA
TOTAL = 2,354 SQFT

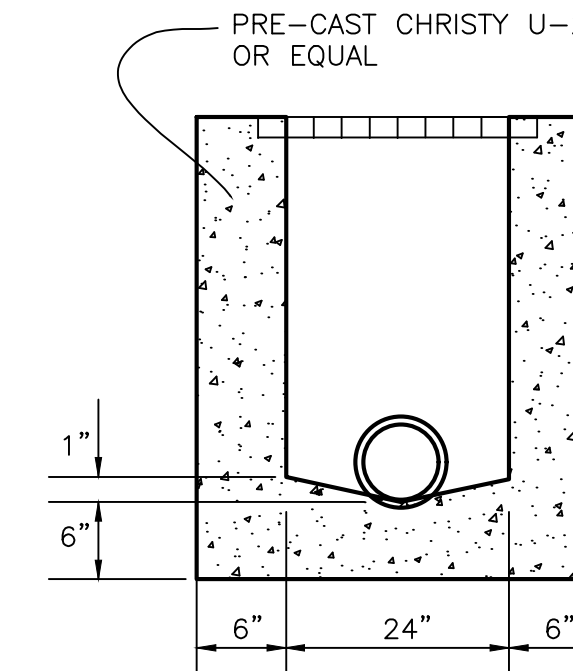


PROPOSED IMPERVIOUS AREA
TOTAL = 4,293 SQFT

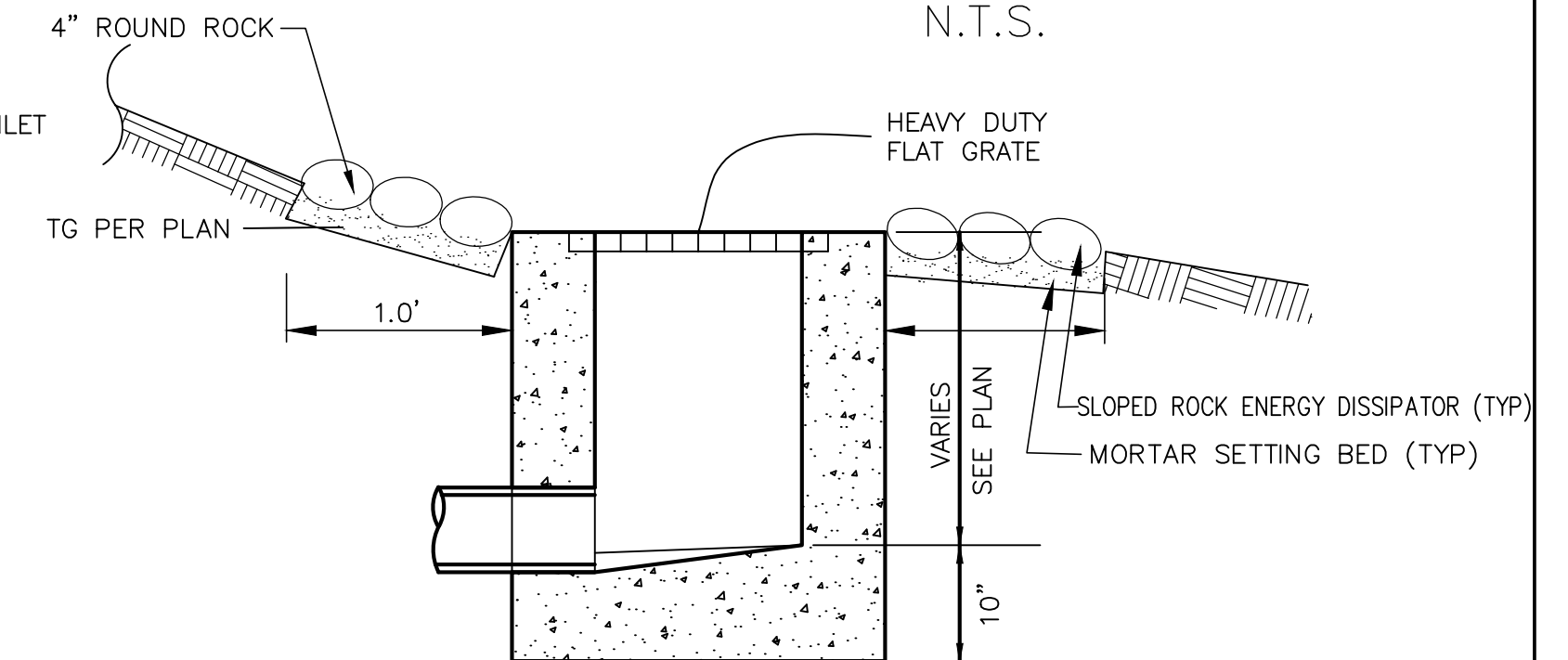
ON-SITE IMPERVIOUS AREAS:	
DESCRIPTION	AREA
PRE-DEVELOPMENT:	
BUILDING	0 SQ. FT.
DRIVEWAY	2,354 SQ. FT.
TOTAL	2,354
POST-DEVELOPMENT:	
BUILDING	2,130 SQ. FT.
DRIVEWAY	1,736 SQ. FT.
PORCH/PATIO	427 SQ. FT.
TOTAL	4,293
TOTAL CHANGE	1,939



PLAN

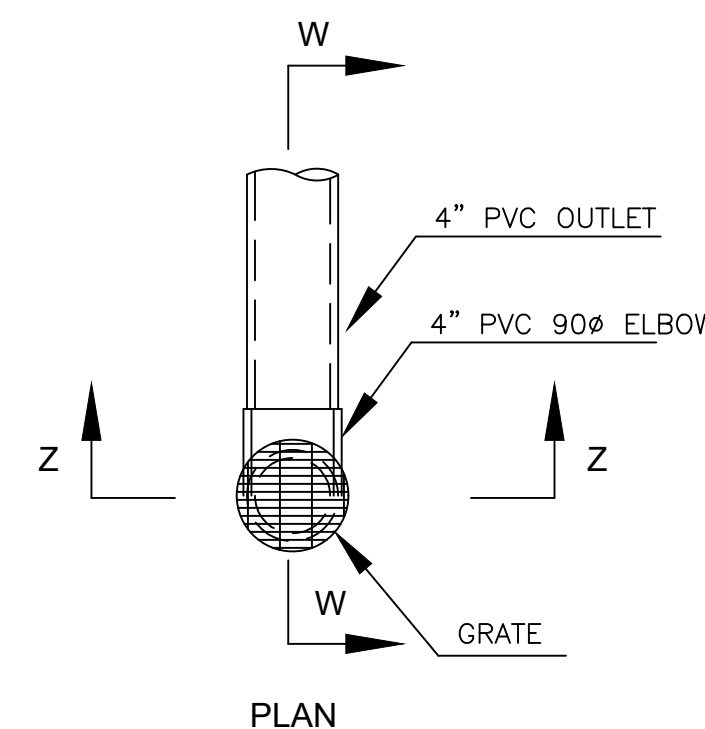


SECTION X-X

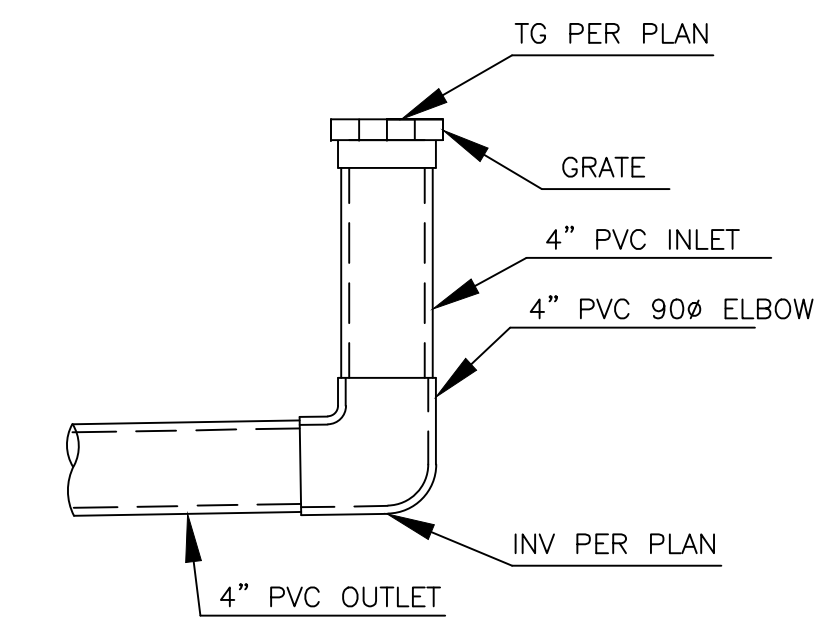


SECTION Y-Y

STORM DRAIN INLET
N.T.S.

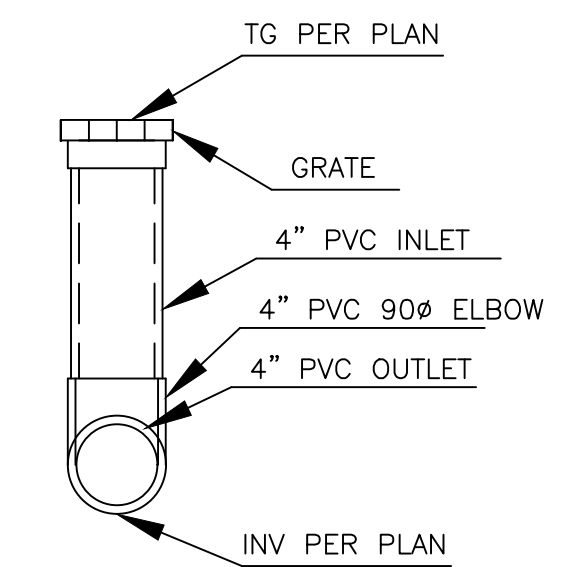


PLAN

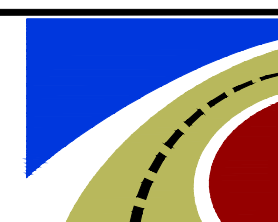


SECTION W-W

STORM DRAIN AREA DRAIN
N.T.S.



SECTION Z-Z



SMP ENGINEERS
CIVIL ENGINEERS—LAND SURVEYORS
1534 Carob Lane Los Altos, CA 94024
Tel. (650) 941-8055 Fax (650) 941-8755

REVISIONS:

GRADING AND DRAINAGE PLANS
DETAILS

Scale:
Prepared by: S.P.
Checked by: S.R.
Date: 06/16/2025
SMP PROJECT #: 223130



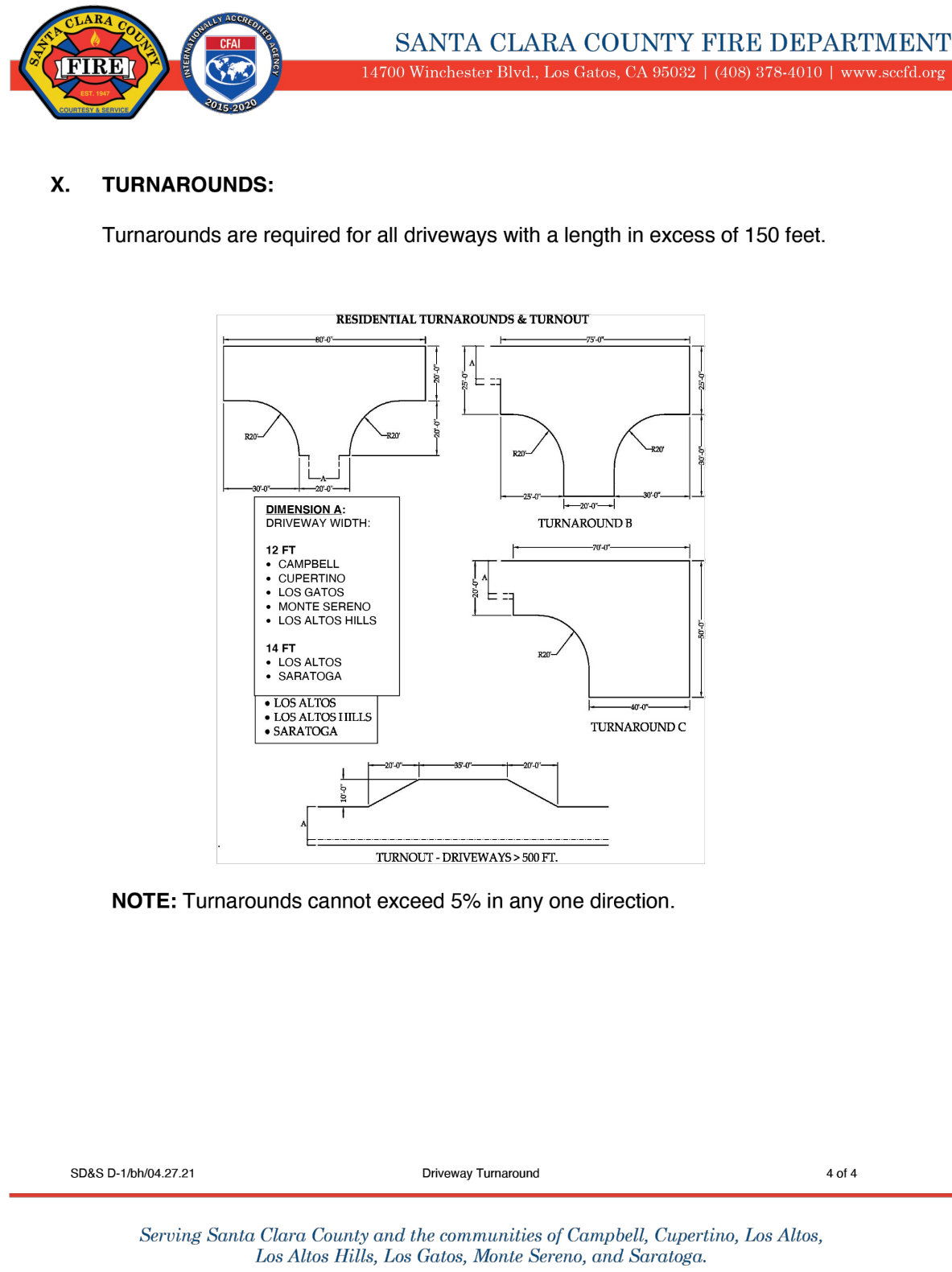
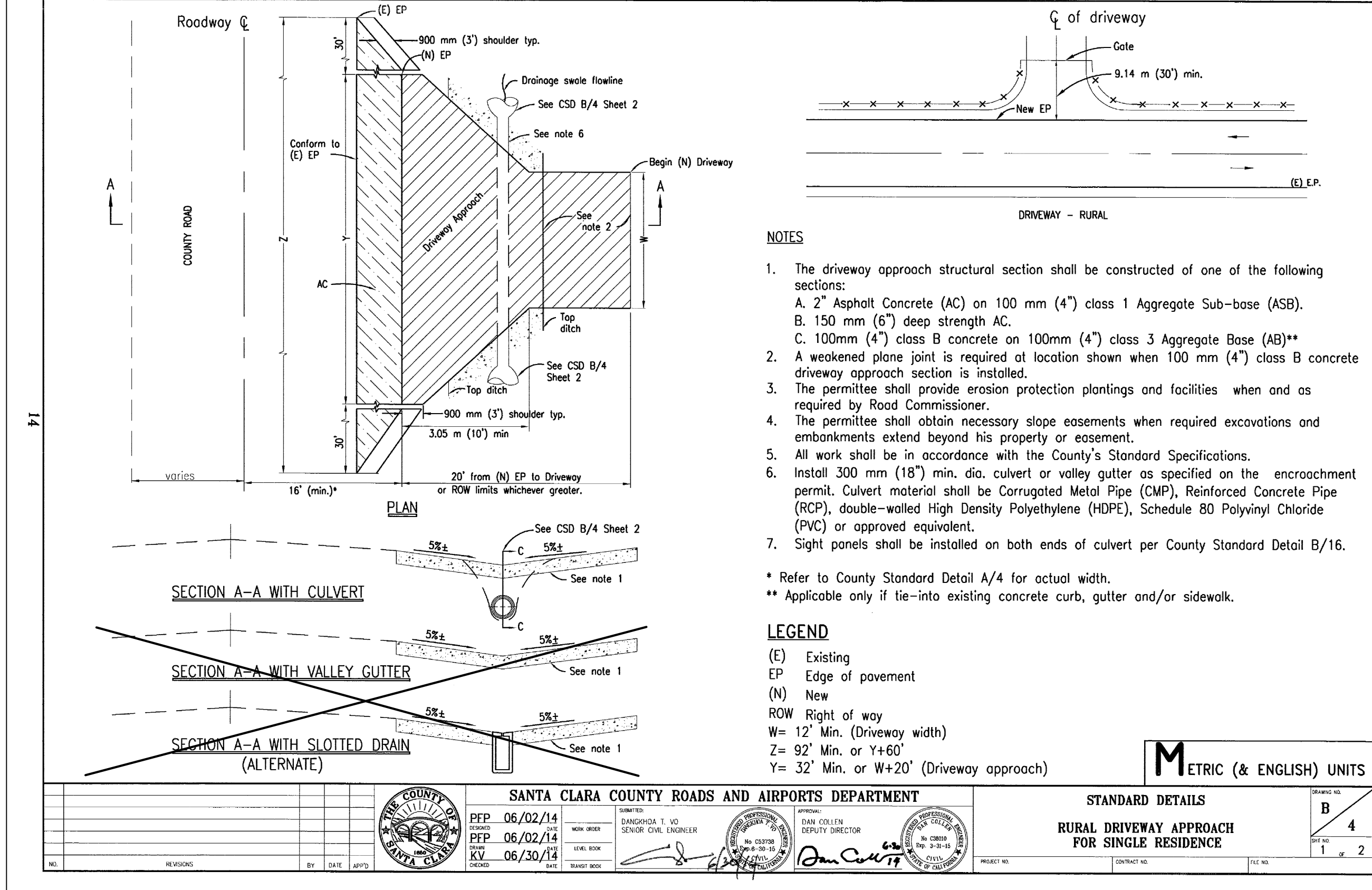
COUNTY OF SANTA CLARA
NEW SINGLE FAMILY HOUSE
15820 MIRADERO AVE., SAN JOSE, CA 95127

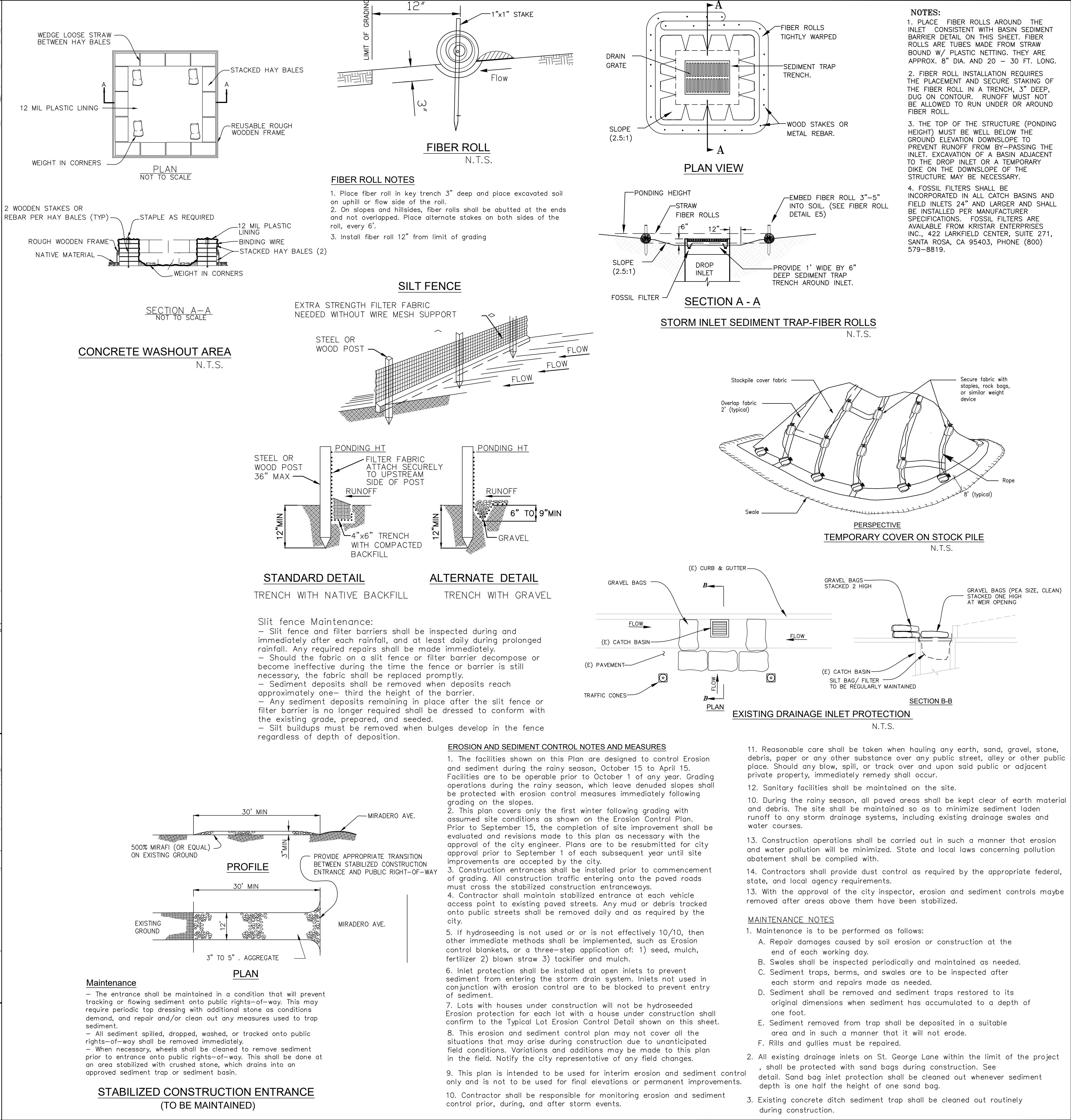
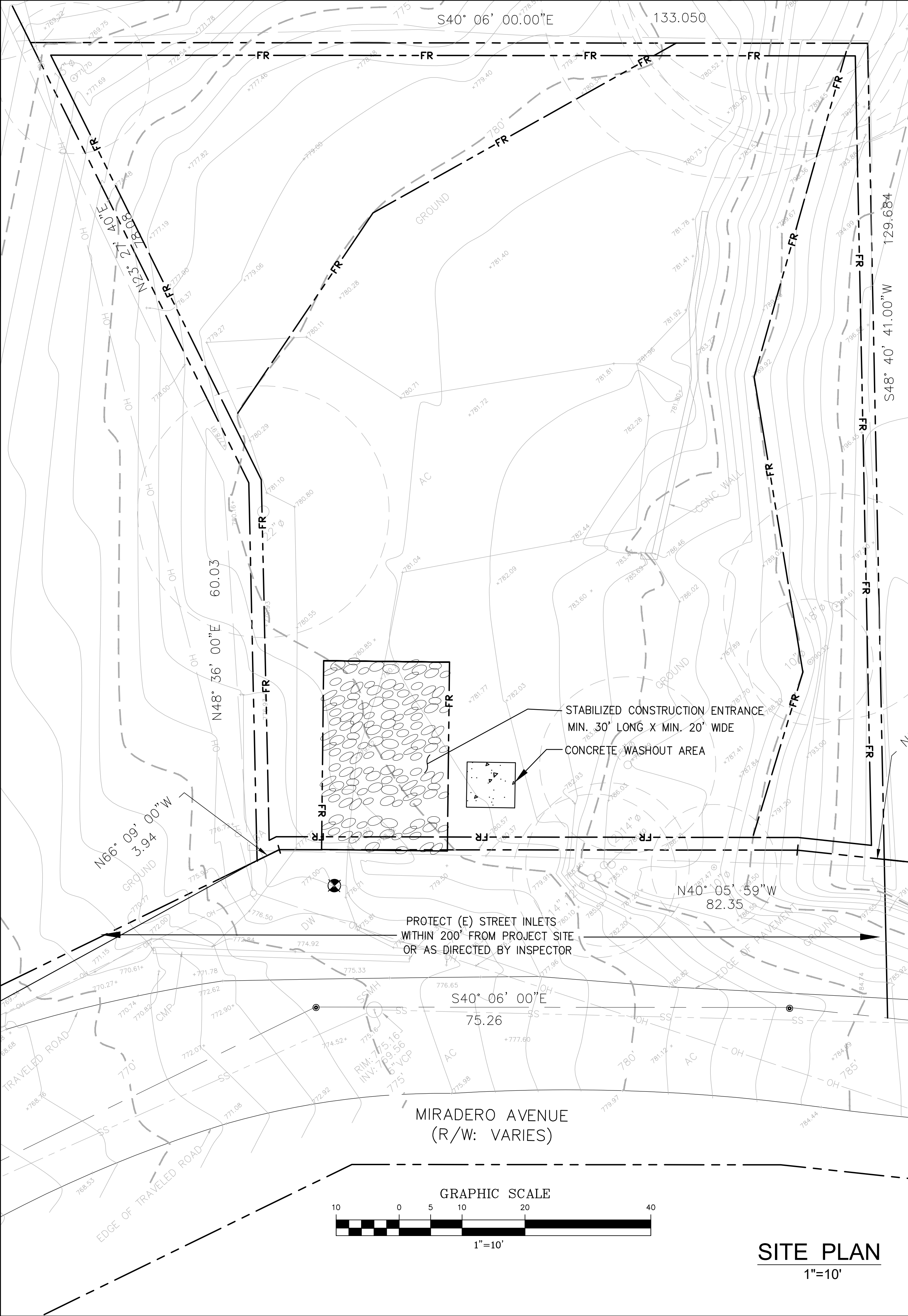
Sheet:
C-3
3 OF 7

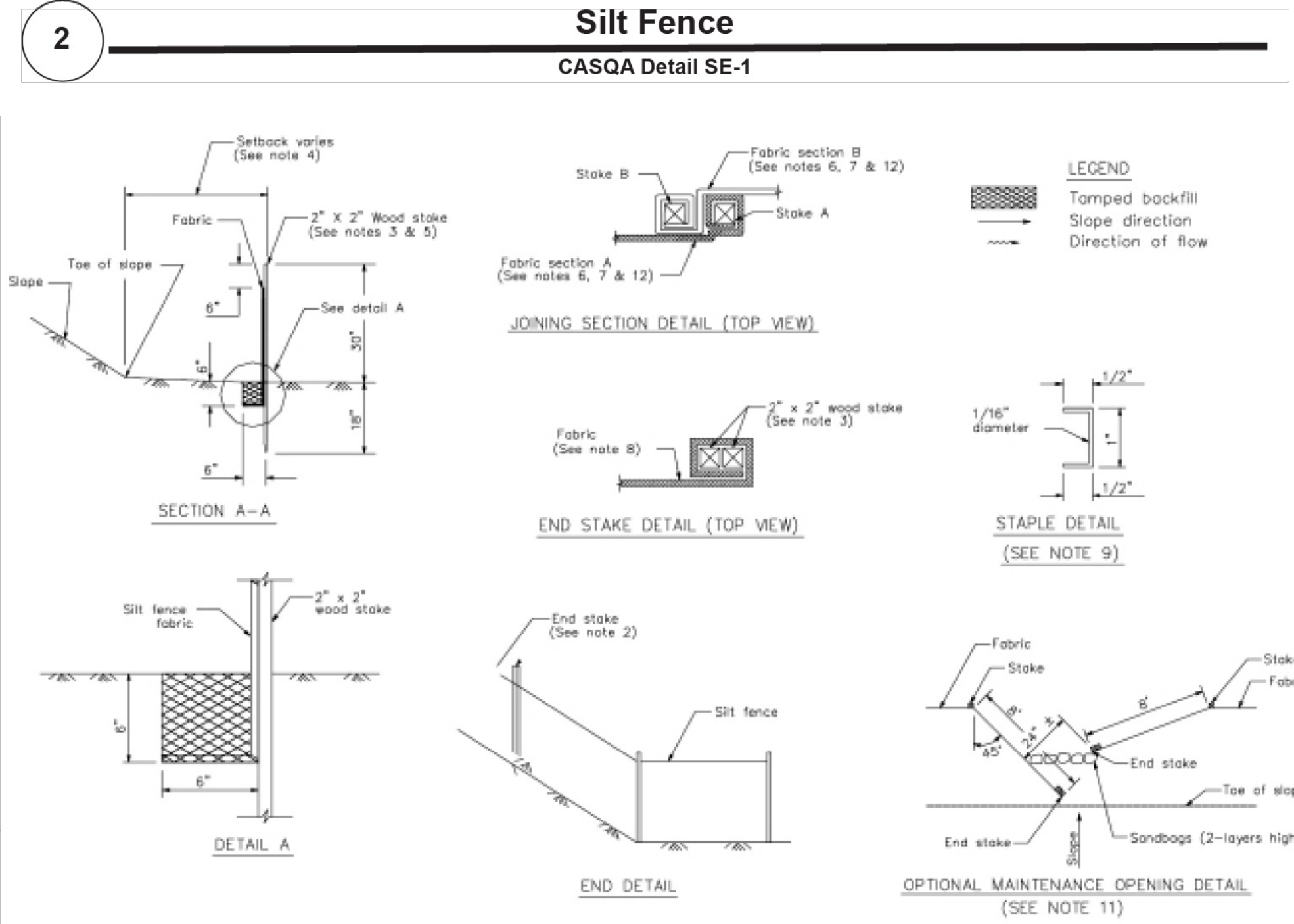
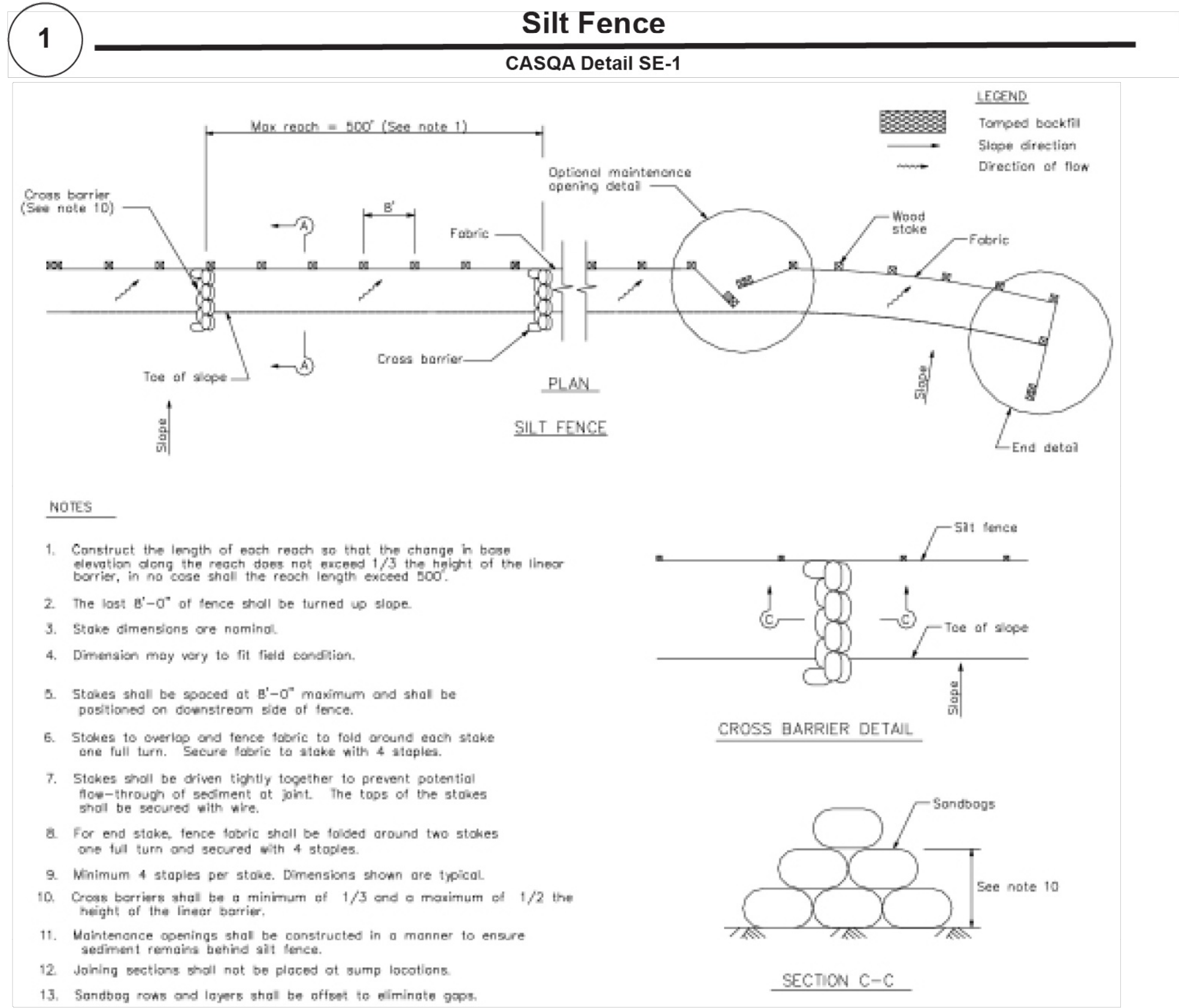
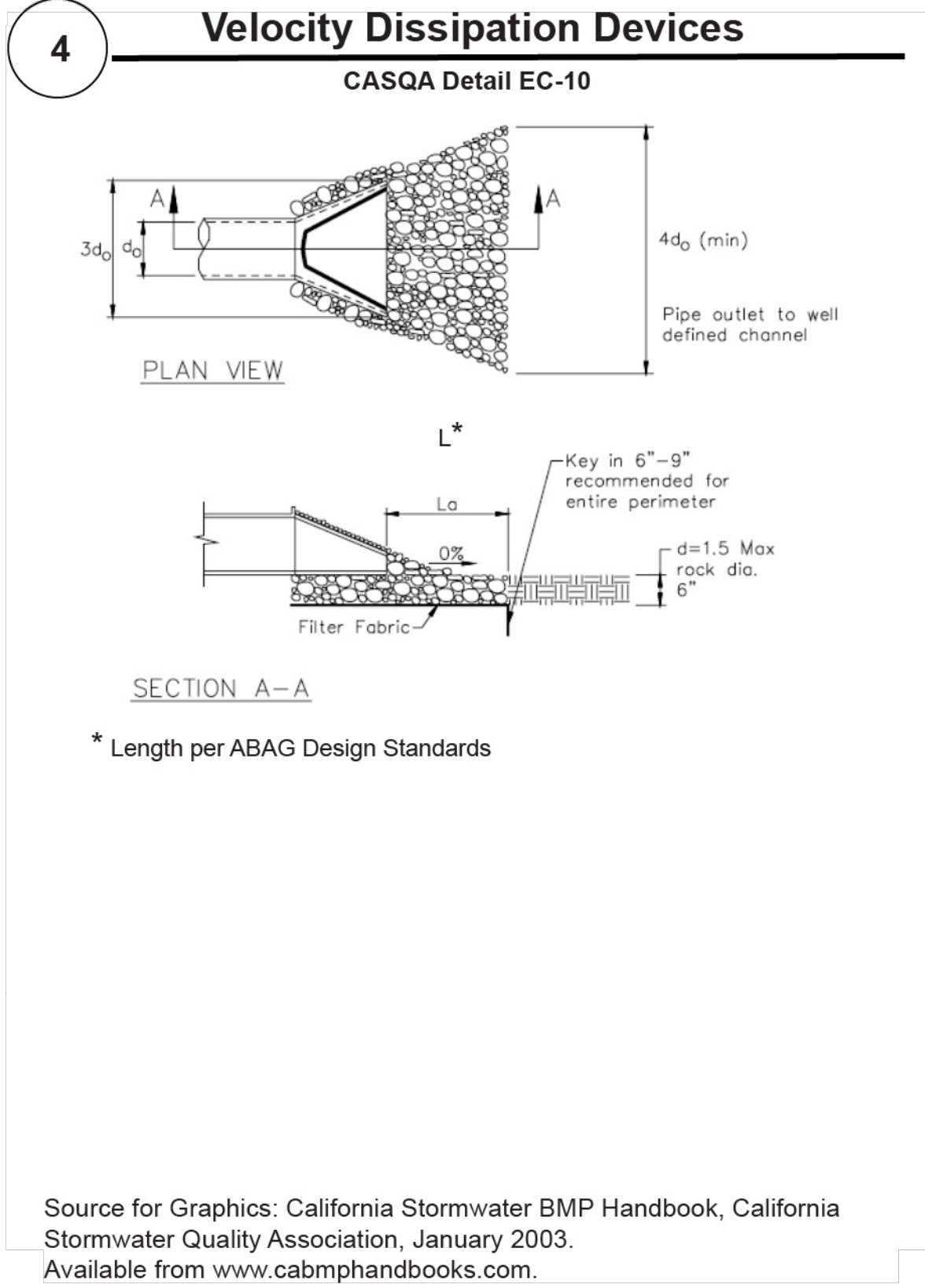
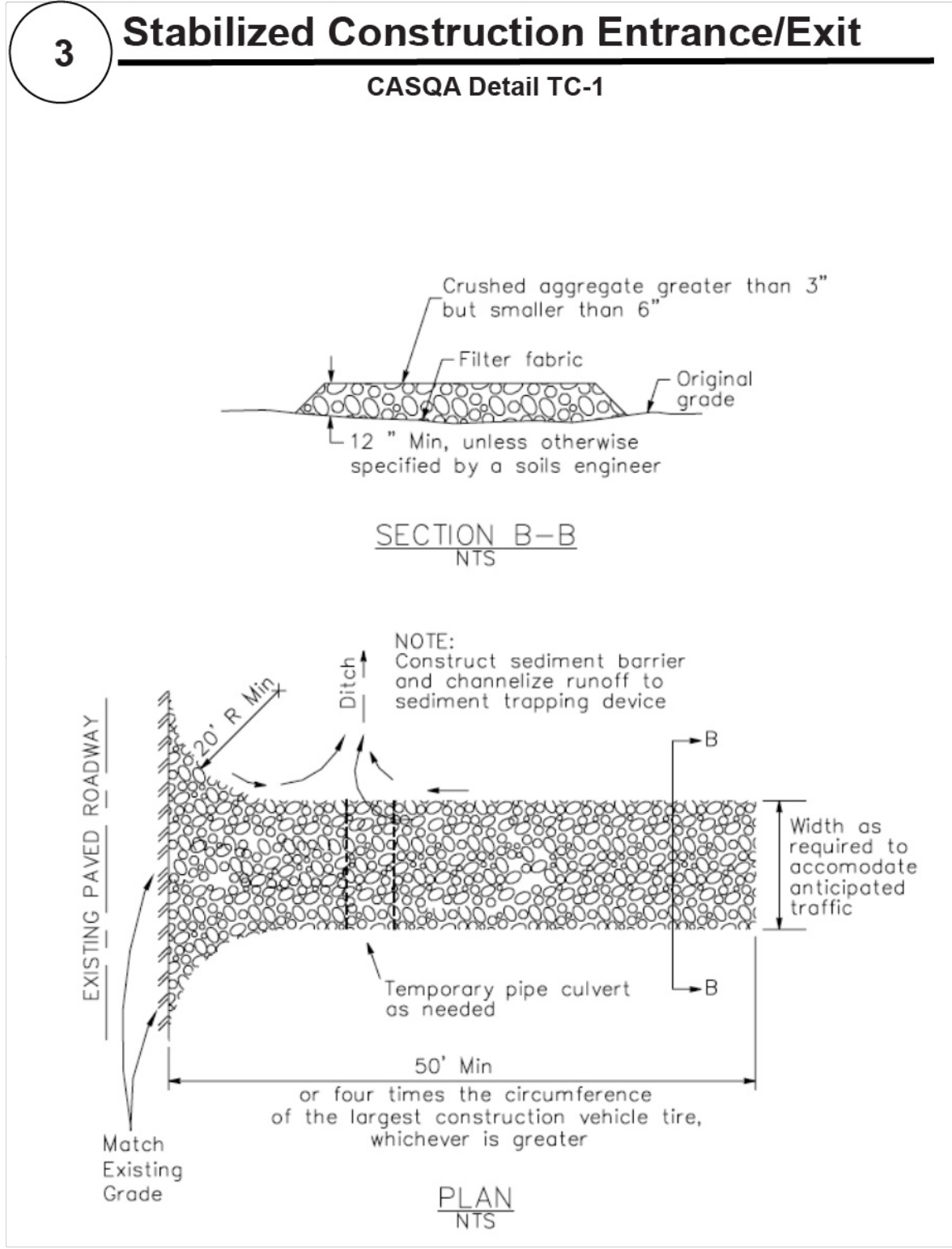
APPLICANT: MANUELA AGUIAR

COUNTY ROAD: MIRADERO

COUNTY RECORD NO.:







- STANDARD BEST MANAGEMENT PRACTICE NOTES**
- Solid and Demolition Waste Management:** Provide designated waste collection areas and containers on site away from streets, gutters, storm drains, and waterways, and arrange for regular disposal. Waste containers must be watertight and covered at all times except when waste is deposited. Refer to Erosion & Sediment Control Field Manual, 4th Edition (page C3) or latest.
 - Hazardous Waste Management:** Provide proper handling and disposal of hazardous wastes by a licensed hazardous waste material hauler. Hazardous wastes shall be stored and properly labeled in sealed containers constructed of suitable materials. Refer to Erosion & Sediment Control Field Manual, 4th Edition (pages C-5 to C-6) or latest.
 - Spill Prevention and Control:** Provide proper storage areas for liquid and solid materials, including chemicals and hazardous substances, away from streets, gutters, storm drains, and waterways. Spill control materials must be kept on site where readily accessible. Spills must be cleaned up immediately and contaminated soil disposed properly. Refer to Erosion & Sediment Control Field Manual, 4th Edition (pages C-7 to C-8, C-13 to C-14) or latest.
 - Vehicle and Construction Equipment Service and Storage:** An area shall be designated for the maintenance, where on-site maintenance is required, and storage of equipment that is protected from stormwater run-on and runoff. Measures shall be provided to capture any waste oils, lubricants, or other potential pollutants and these wastes shall be properly disposed of off site. Fueling and major maintenance/repair, and washing shall be conducted off-site whenever feasible. Refer to Erosion & Sediment Control Field Manual, 4th Edition (page C9) or latest.
 - Material Delivery, Handling and Storage:** In general, materials should not be stockpiled on site. Where temporary stockpiles are necessary and approved by the County, they shall be covered with secured plastic sheeting or tarp and located in designated areas near construction entrances and away from drainage paths and waterways. Barriers shall be provided around storage areas where materials are potentially in contact with runoff. Refer to Erosion & Sediment Control Field Manual, 4th Edition (pages C-11 to C-12) or latest.
 - Handling and Disposal of Concrete and Cement:** When concrete trucks and equipment are washed on-site, concrete wastewater shall be contained in designated containers or in a temporary lined and watertight pit where wasted concrete can harden for later removal. If possible have concrete contractor remove concrete wash water from site. In no case shall fresh concrete be washed into the road right-of-way. Refer to Erosion & Sediment Control Field Manual, 4th Edition (pages C-15 to C-16) or latest.
 - Pavement Construction Management:** Prevent or reduce the discharge of pollutants from paving operations, using measures to prevent run-on and runoff pollution and properly disposing of wastes. Avoid paving in the wet season and reschedule paving when rain is in the forecast. Residue from saw-cutting shall be vacuumed for proper disposal. Refer to Erosion & Sediment Control Field Manual, 4th Edition (pages C-17 to C-18) or latest.
 - Contaminated Soil and Water Management:** Inspections to identify contaminated soils should occur prior to construction and at regular intervals during construction. Remediating contaminated soil should occur promptly after identification and be specific to the contaminant identified, which may include hazardous waste removal. Refer to Erosion & Sediment Control Field Manual, 4th Edition (pages C-19 to C-20) or latest.
 - Sanitary/Septic Water Management:** Temporary sanitary facilities should be located away from drainage paths, waterways, and traffic areas. Only licensed sanitary and septic waste haulers should be used. Secondary containment should be provided for all sanitary facilities. Refer to Erosion & Sediment Control Field Manual, 4th Edition (page C-21) or latest.
 - Inspection & Maintenance:** Areas of material and equipment storage sites and temporary sanitary facilities must be inspected weekly. Problem areas shall be identified and appropriate additional and/or alternative control measures implemented immediately, within 24 hours of the problem being identified.

- STANDARD EROSION CONTROL NOTES**
- Sediment Control Management:**
 - Tracking Prevention & Clean Up:** Activities shall be organized and measures taken as needed to prevent or minimize tracking of soil onto the public street system. A gravel or proprietary device construction entrance/exit is required for all sites. Clean up of tracked material shall be provided by means of a street sweeper prior to an approaching rain event, or at least once at the end of each workday that material is tracked, or, more frequently as determined by the County Inspector. Refer to Erosion & Sediment Control Field Manual, 4th Edition (pages B-31 to B-33) or latest.
 - Storm Drain Inlet and Catch Basin Inlet Protection:** All inlets within the vicinity of the project and within the project limits shall be protected with gravel bags placed around inlets or other inlet protection. At locations where exposed soils are present, staked fiber rolls or staked silt fences can be used. Inlet filters are not allowed due to clogging and subsequent flooding. Refer to Erosion & Sediment Control Field Manual, 4th Edition (pages B-49 to B-51) or latest.
 - Storm Water Runoff:** No storm water runoff shall be allowed to drain in to the existing and/or proposed underground storm drain system or other above ground watercourses until appropriate erosion control measures are fully installed.
 - Dust Control:** The contractor shall provide dust control in graded areas as required by providing wet suppression or chemical stabilization of exposed soils, providing for rapid clean up of sediments deposited on paved roads, furnishing construction road entrances and vehicle wash down areas, and limiting the amount of areas disturbed by clearing and earth moving operations by scheduling these activities in phases.
 - Stockpiling:** Excavated soils shall not be placed in streets or on paved areas. Borrow and temporary stockpiles shall be protected with appropriate erosion control measures (tarps, straw bales, silt fences, etc.) to ensure silt does not leave the site or enter the storm drain system or neighboring watercourse.
 - Erosion Control:** During the rainy season, all disturbed areas must include an effective combination of erosion and sediment control. It is required that temporary erosion control measures are applied to all disturbed soil areas prior to a rain event. During the non-rainy season, erosion control measures must be applied sufficient to control wind erosion at the site.
 - Inspection & Maintenance:** Disturbed areas of the Project's site, locations where vehicles enter or exit the site, and all erosion and sediment controls that are identified as part of the Erosion Control Plans must be inspected by the Contractor before, during, and after storm events, and at least weekly during seasonal wet periods. Problem areas shall be identified and appropriate additional and/or alternative control measures implemented immediately, within 24 hours of the problem being identified.
 - Project Completion:** Prior to project completion and signoff by the County Inspector, all disturbed areas shall be reseeded, planted, or landscaped to minimize the potential for erosion on the subject site.
 - It shall be the Owner's/Contractor's responsibility to maintain control of the entire construction operation and to keep the entire site in compliance with the erosion control plan.
 - Erosion and sediment control best management practices shall be operable year round or until vegetation is fully established on landscaped surfaces.

Project Information

Best Management Practices and Erosion Control Details Sheet 1
County of Santa Clara



BMP-1

SMP ENGINEERS
CIVIL ENGINEERS—LAND SURVEYORS
1534 Carob Lane Los Altos, CA 94024
Tel. (650) 941-8055 Fax (650) 941-8755

REVISIONS:

APPLICANT: MANUELA AGUIAR

GRADING AND DRAINAGE PLANS
BMP-1, EROSION CONTROL DETAILS, NOTES

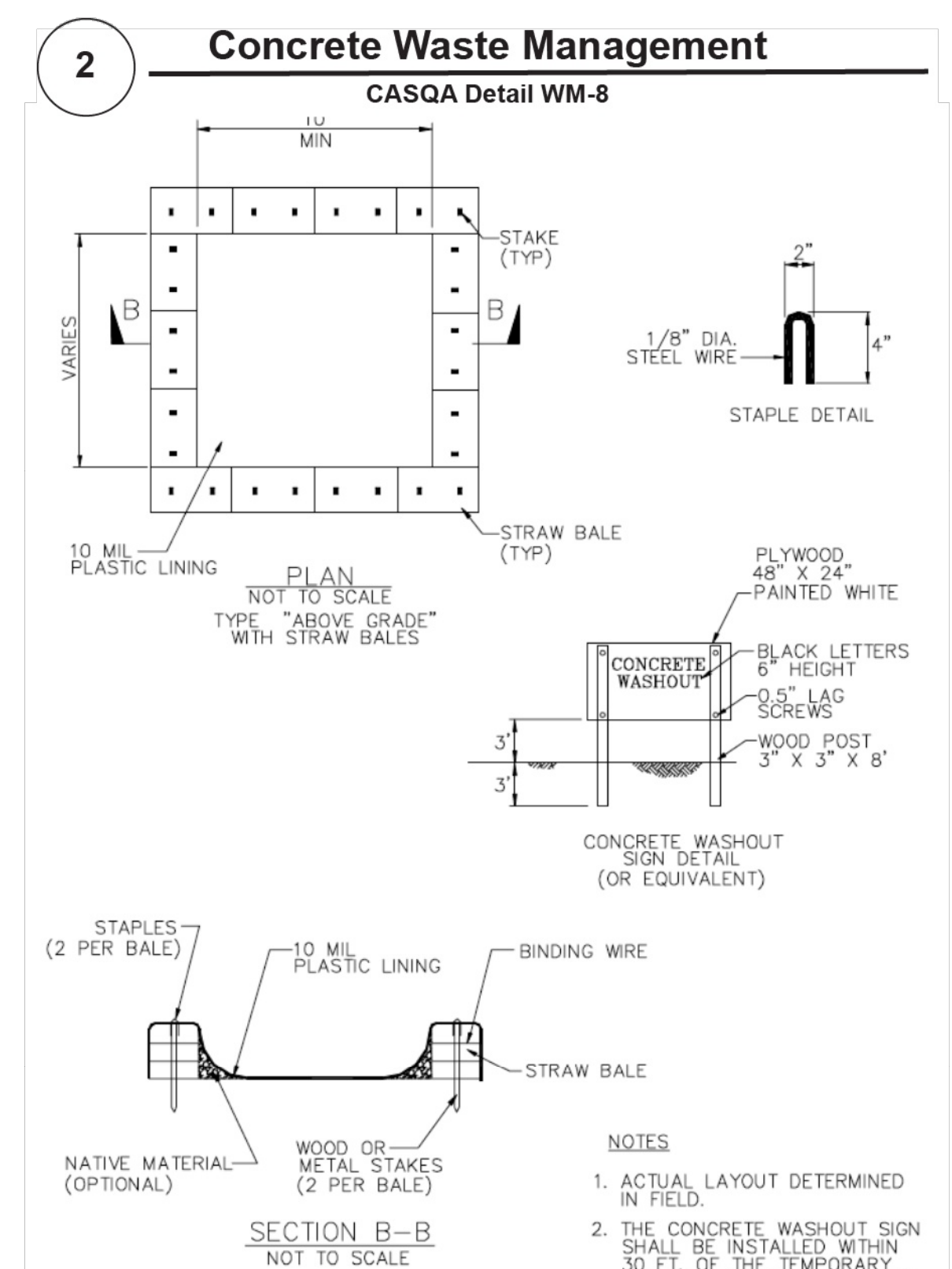
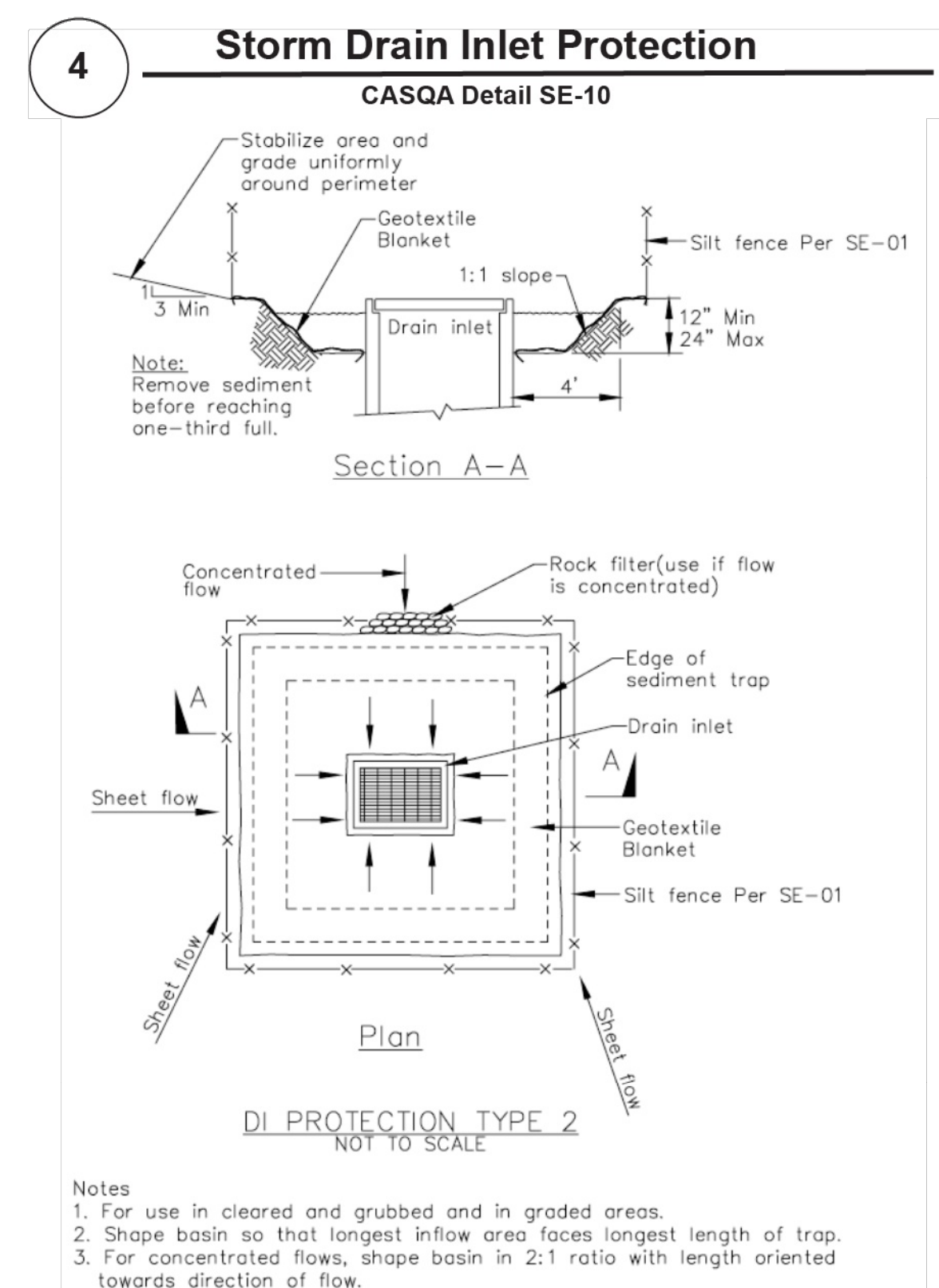
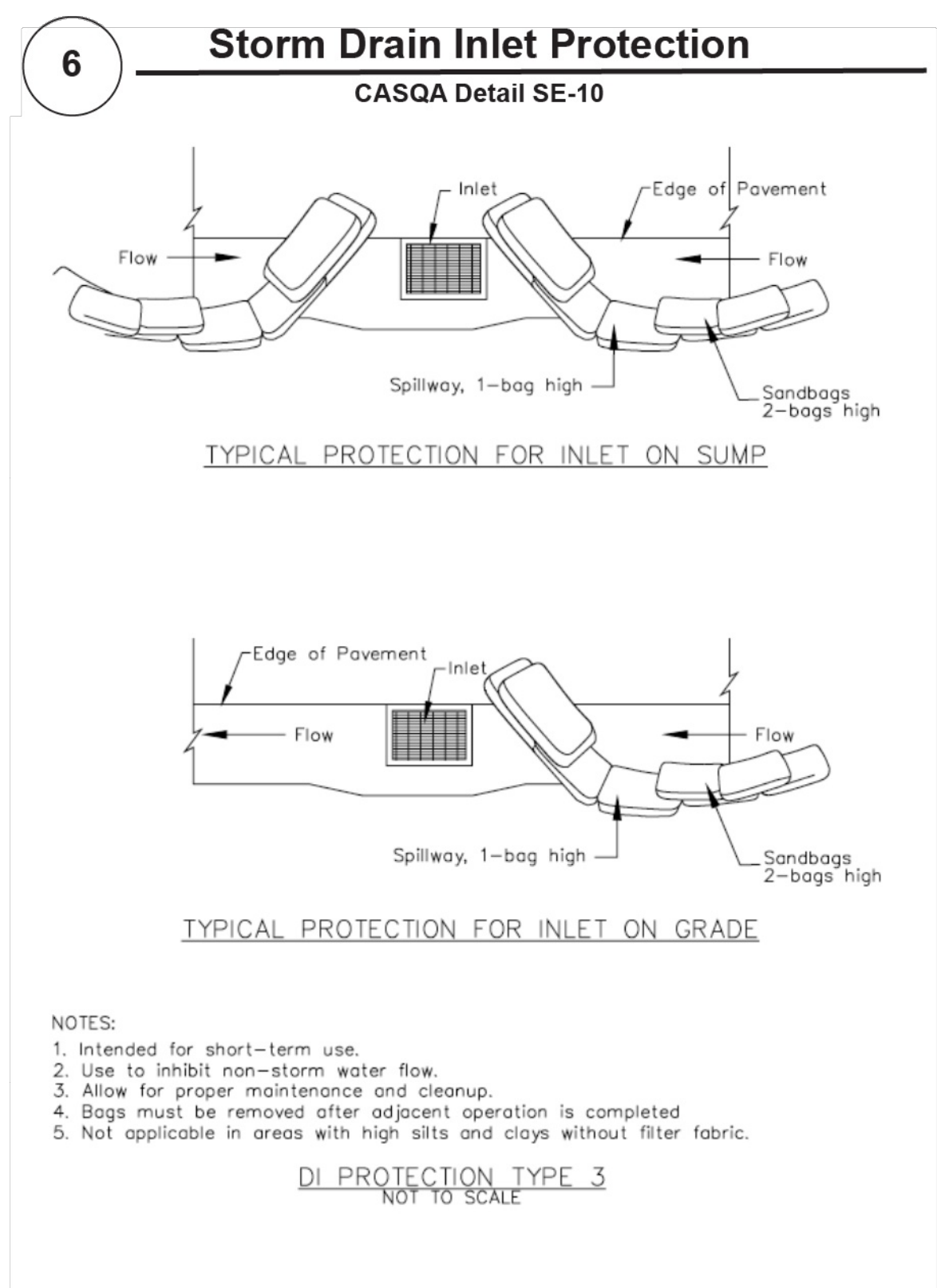
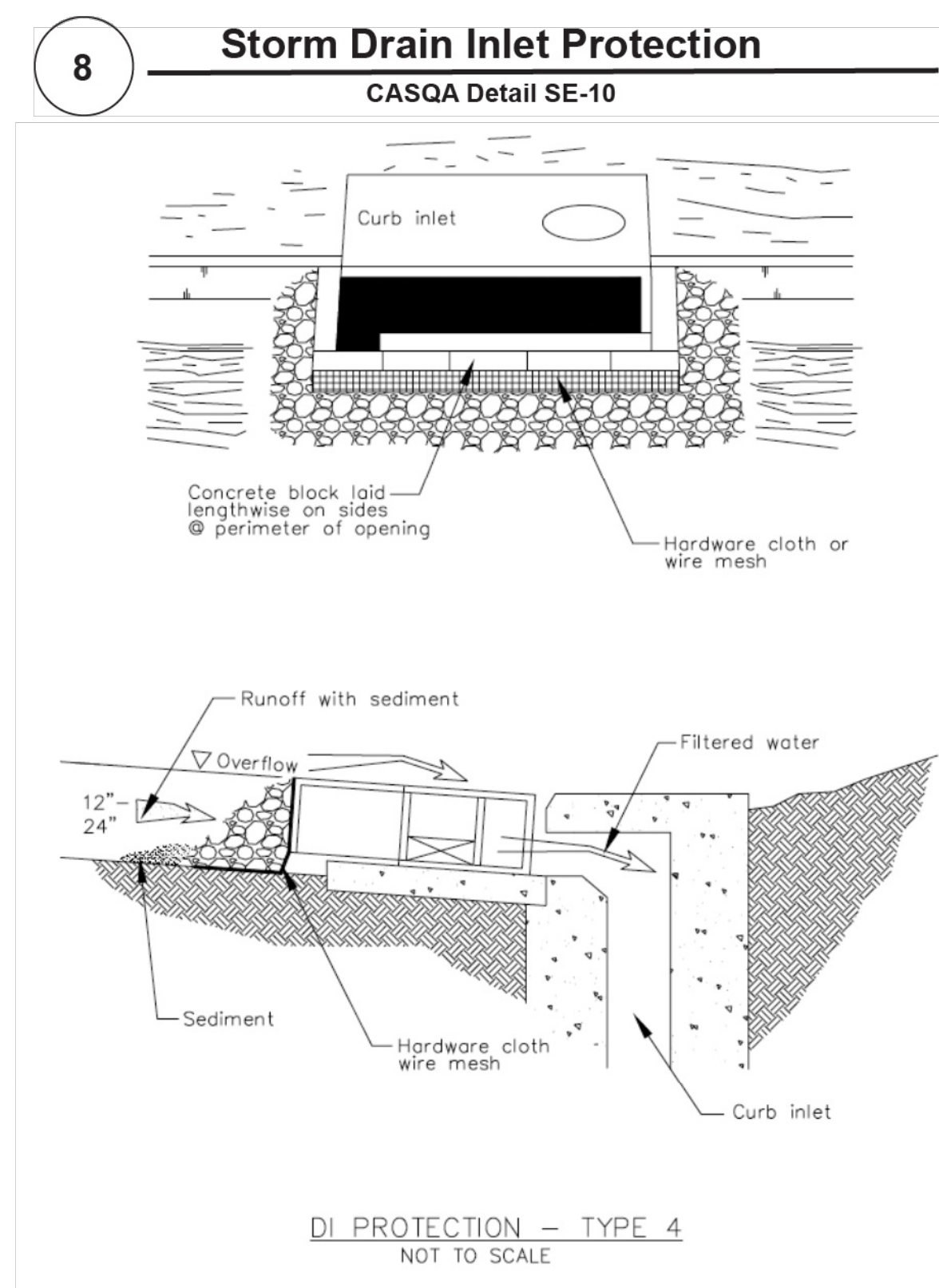
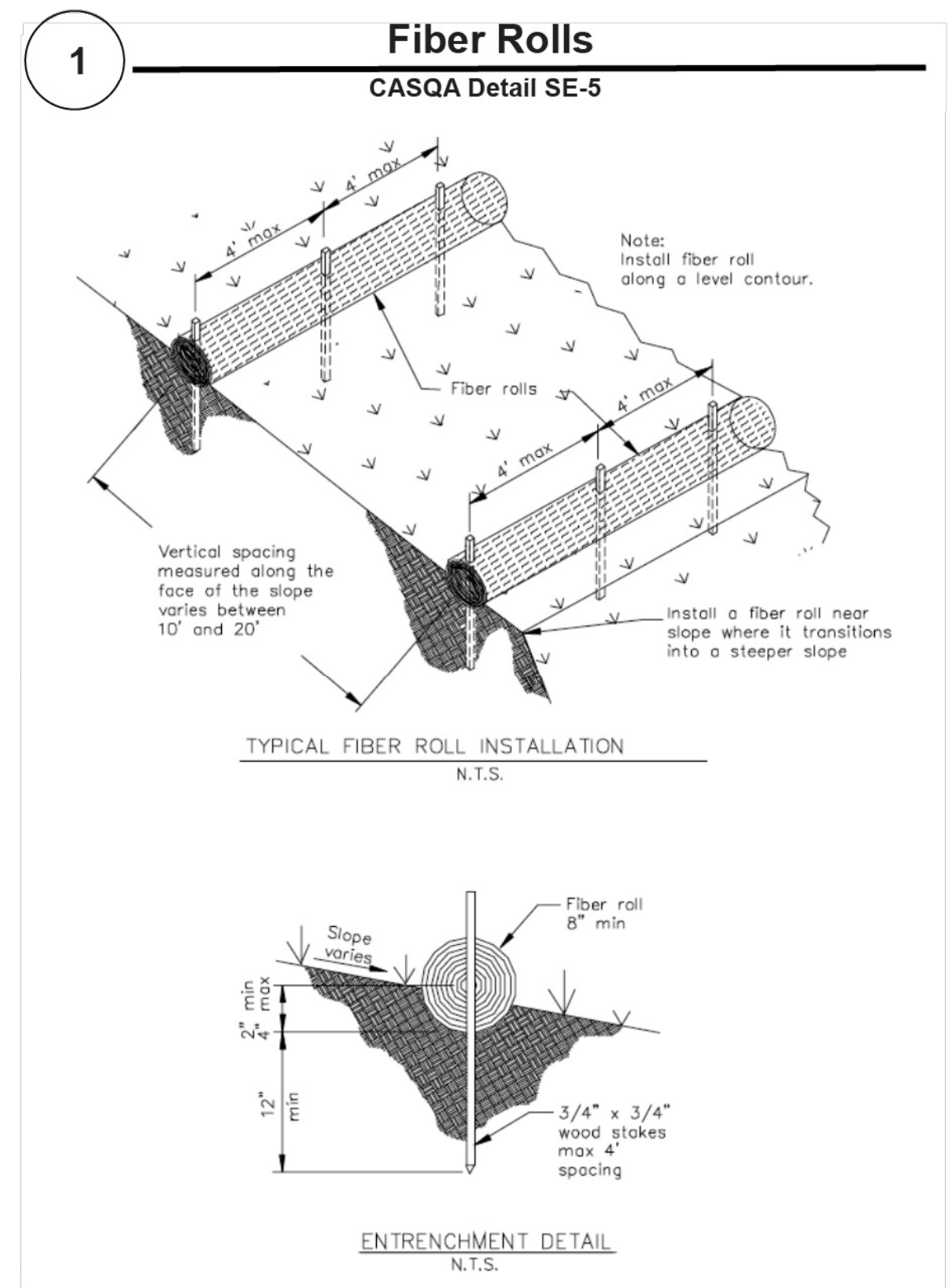
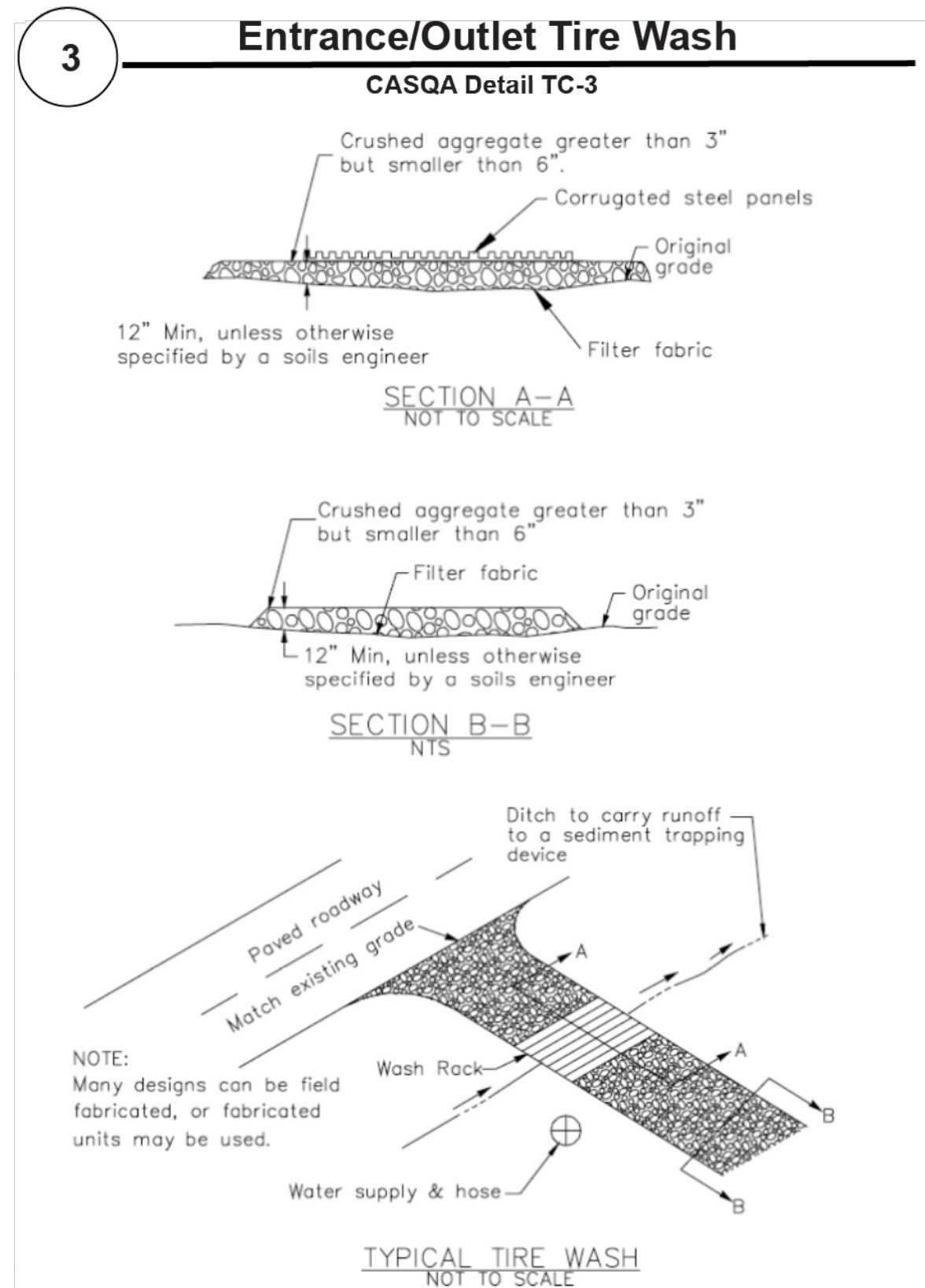
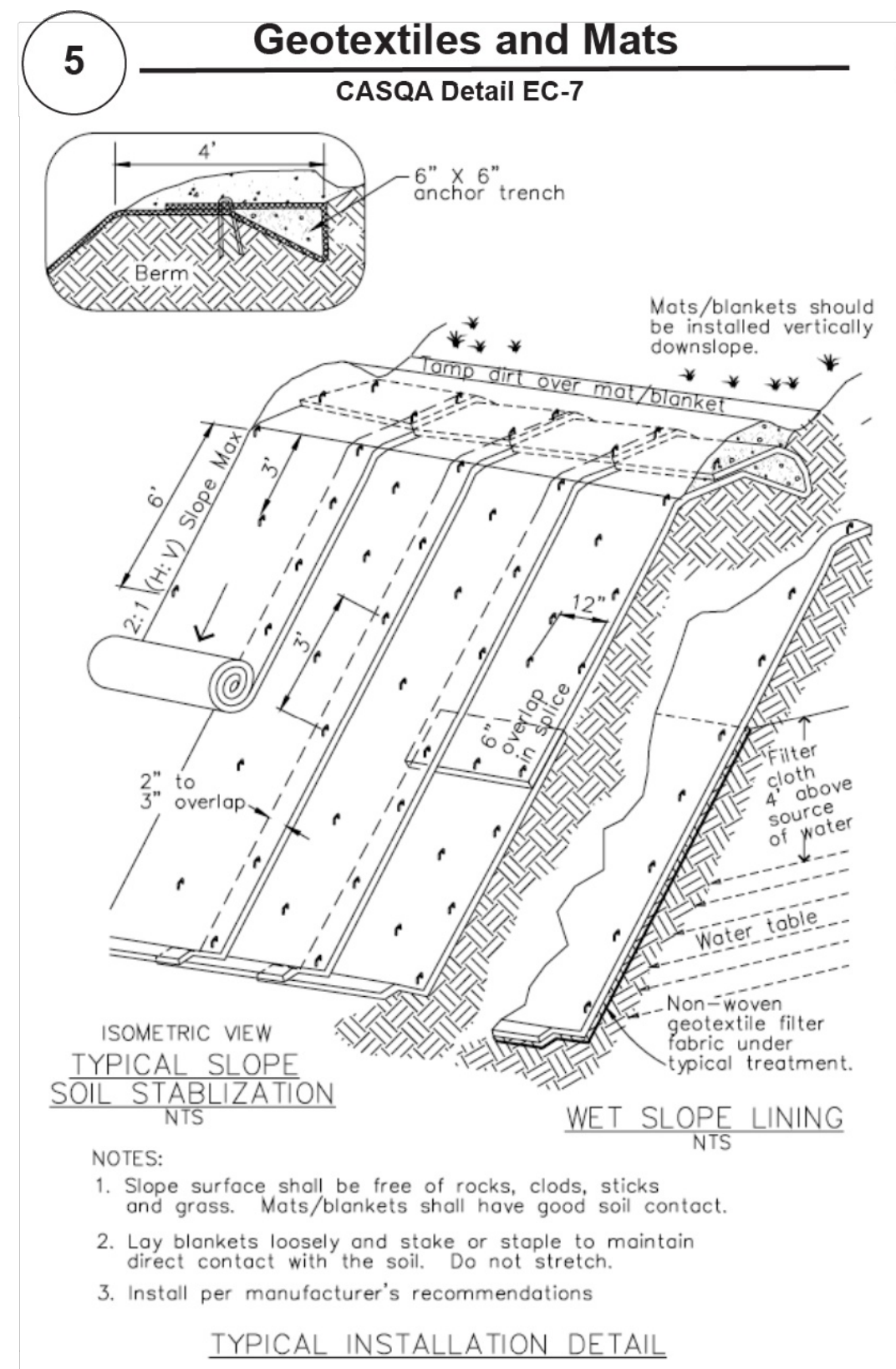
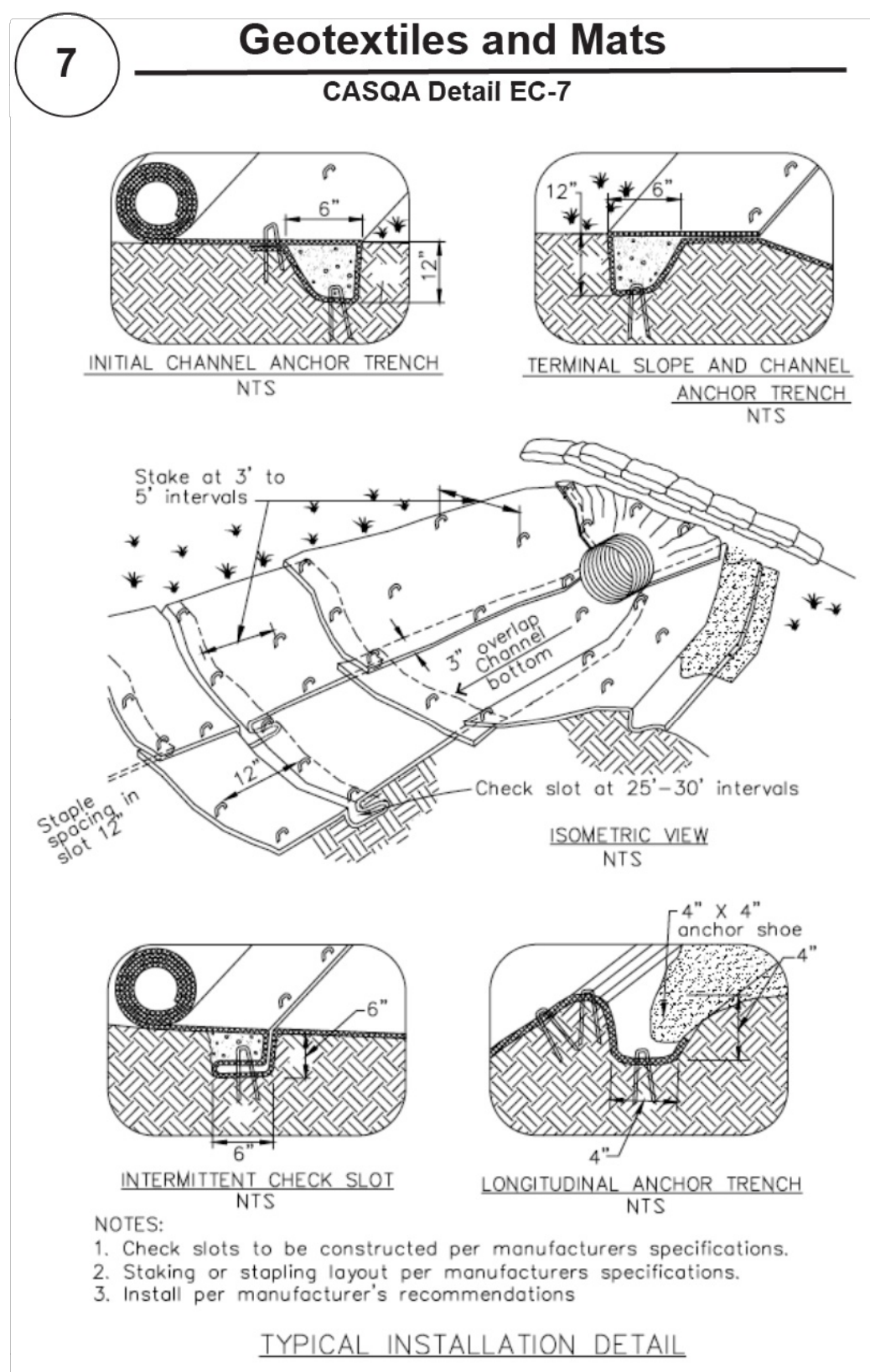
Scale:
Prepared by: S.P.
Checked by: S.R.
Date: 06/16/2025
SMP PROJECT #: 223130



COUNTY OF SANTA CLARA
NEW SINGLE FAMILY HOUSE
15820 MIRADERO AVE., SAN JOSE, CA 95127

Sheet:
C-6
6 OF 7

COUNTY RECORD NO.:



Project Information

Best Management Practices and Erosion Control Details Sheet 2
County of Santa Clara



BMP-2

SMP ENGINEERS
CIVIL ENGINEERS—LAND SURVEYORS
1534 Carob Lane Los Altos, CA 94024
Tel. (650) 941-8055 Fax (650) 941-8755

REVISIONS:

APPLICANT: MANUELA AGUIAR

GRADING AND DRAINAGE PLANS
BMP-2, EROSION CONTROL DETAILS, NOTES

Scale:
Prepared by: S.P.
Checked by: S.R.
Date: 06/16/2025
SMP PROJECT #: 223130



COUNTY OF SANTA CLARA
NEW SINGLE FAMILY HOUSE
15820 MIRADERO AVE., SAN JOSE, CA 95127

COUNTY RECORD NO.:

Sheet:
C-7
7 OF 7