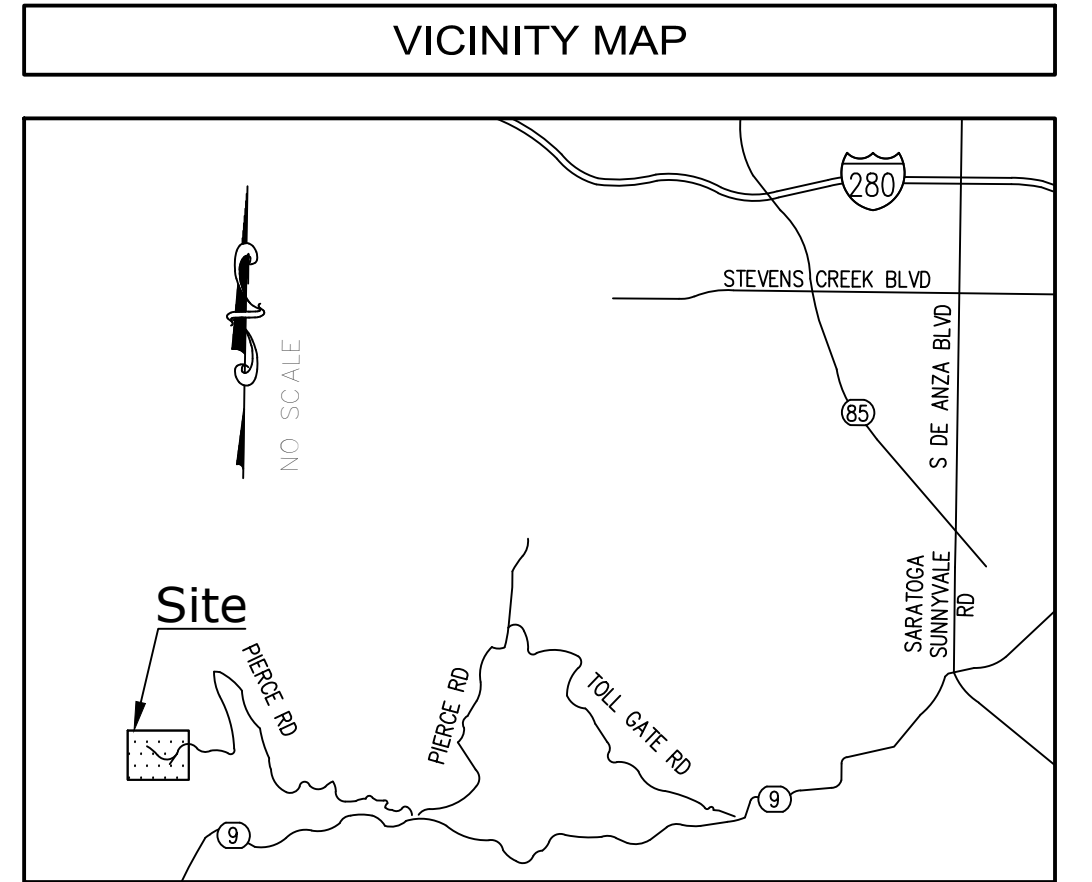
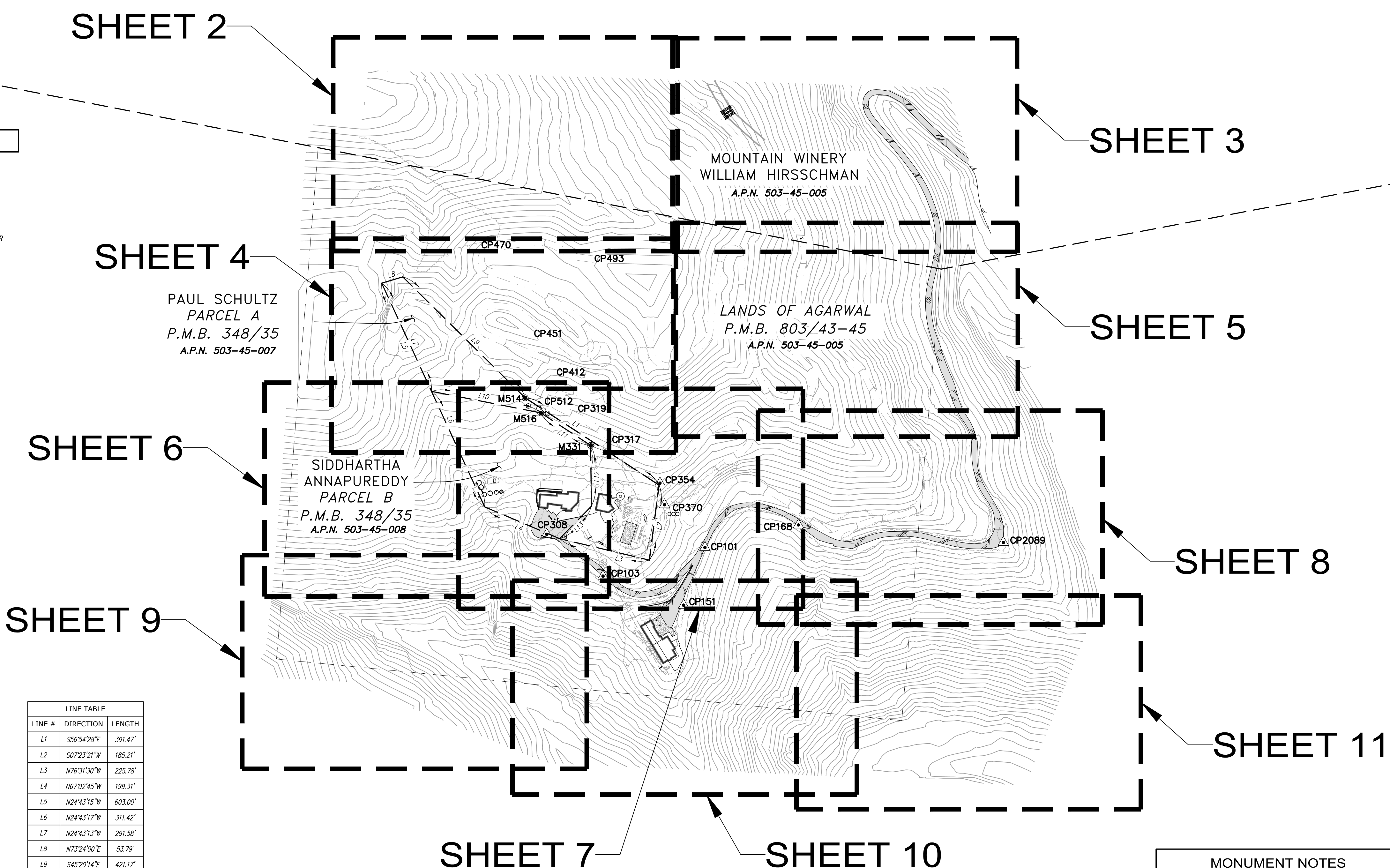


AERIAL - TOPOGRAPHIC SURVEY

APPROXIMATE ADDRESS: 14910 PIERCE ROAD, SARATOGA, CA 95070



LEGEND	
	ASPHALT PAVEMENT
	CONCRETE PAVEMENT
	CONTROL POINT
	FIRE HYDRANT
	FOUND MONUMENT AS NOTED
	POWER POLE
	POWER POLE W/TRANSFORMER
	UNKNOWN MANHOLE
	ASSESSOR'S PARCEL NUMBER
	CENTERLINE
	DRAIN INLET
	FINISH SURFACE
	FLOW LINE
	NATURAL GROUND
	PROPERTY LINE
	TOP OF GRATE
	CHAIN LINK FENCE
	CONCRETE/RETAINING WALL
	EDGE OF PAVEMENT
	FLOW LINE
	INTERIOR LOT LINE
	OVERHANG
	OVERHEAD LINE
	RIDGE LINE
	TOP OF SLOPE



LEGAL DESCRIPTION

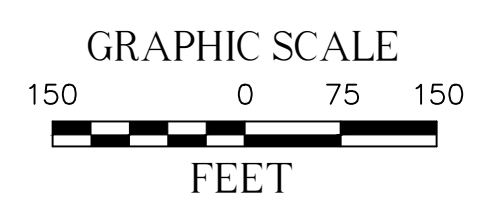
PARCEL ONE:
THE NORTHEAST 1/4 OF THE NORTHWEST 1/4 OF SECTION 10, TOWNSHIP 8 SOUTH, RANGE 2 WEST, M.D.B. & M.

EXCEPTING THEREFROM THAT PORTION LYING THEREOF DESCRIBED AS FOLLOWS:
BEGINNING AT THE WESTERLY 1/16 CORNER OF THE SECTION LINE COMMON TO SECTIONS 3 AND 10 TOWNSHIP 8 SOUTH, RANGE 2 WEST, M.D.M., SAID CORNER BEING A 2"x4" REDWOOD STAKE AND SCRIBED 1/8 S. COR.; THENCE FROM SAID POINT OF BEGINNING S. 18° 01' 51" E. 169.97 FEET TO THE TRUE POINT OF BEGINNING OF THE PROPERTY TO BE DESCRIBED; THENCE FROM SAID TRUE POINT OF BEGINNING N. 74° 03' 00" E. 53.79 FEET; THENCE S. 44° 41' 14" E. 421.17 FEET; THENCE S. 56° 15' 28" E. 391.47 FEET; THENCE S. 8° 02' 27" W. 185.21 FEET; THENCE N. 75° 52' 30" W. 225.78 FEET; THENCE N. 66° 23' 45" W. 199.31 FEET; THENCE N. 24° 04' 15" W. 603.00 FEET TO THE POINT OF BEGINNING.

EXCEPTING THEREFROM THAT CERTAIN PARCEL DESCRIBED IN THE QUITCLAIM DEED TO THE MOUNTAIN WINERY INC., RECORDED OCTOBER 21, 1993 IN BOOK N 082 PAGE 2200, INSTRUMENT NO. 12170991 OFFICE OF THE RECORDER, AND DESCRIBED AS FOLLOWS:
BEING A PORTION OF THAT CERTAIN GRANT DEED RECORDED APRIL 24, 1943 IN BOOK 1136 OF OFFICIAL RECORDS AT PAGE 419, SANTA CLARA COUNTY, STATE OF CALIFORNIA, BEING MORE PARTICULARLY DESCRIBED AS FOLLOWS:
BEGINNING AT THE SOUTH 1/4 CORNER OF SECTION 3, T8S, R2W, M.D.M., AS DESCRIBED IN SAID GRANT DEED; THENCE FROM SAID POINT OF BEGINNING NORTH 82° 20' 55" WEST 2319.72 FEET TO THE COMMON SECTION CORNER OF SECTIONS 3, 4, 9 AND 10 T8S, R2W, M.D.M.; THENCE NORTH 90° 00' 00" EAST 2869.49 FEET; THENCE SOUTH 03° 34' 04" EAST 389.50 FEET RETURNING TO THE POINT OF BEGINNING AND CONTAINING 557,754 SQUARE FEET OF LAND MORE OR LESS.

THE PURPOSE OF THE DESCRIPTION IS TO DELINEATE A PORTION OF REAL PROPERTY WHICH BASED ON THE UNITED STATES GOVERNMENT ORIGINAL NOTES AND PLAT FOR T8S, R2W, M.D.M., APPEARS TO LIE WITHIN SECTION 10, T8S, R2W, M.D.M., HOWEVER BASED ON SURVEYS OF RECORD AND PHYSICAL EVIDENCE THE PROPERTY ABOVE DESCRIBED LIES WHOLLY WITHIN SECTION 3, T8S, R2W, M.D.M.

LINE TABLE		
LINE #	DIRECTION	LENGTH
L1	S56°54'28"E	391.47'
L2	S07°23'21"W	185.21'
L3	N76°31'30"W	225.78'
L4	N67°02'45"W	199.31'
L5	N24°43'15"W	603.00'
L6	N24°43'17"W	311.42'
L7	N24°43'13"W	291.58'
L8	N73°24'00"E	53.79'
L9	S45°20'14"E	421.17'
L10	S78°51'57"E	272.48'
L11	S56°54'28"E	146.00'
L12	N00°39'00"W	148.91'
L13	N44°21'00"E	111.00'



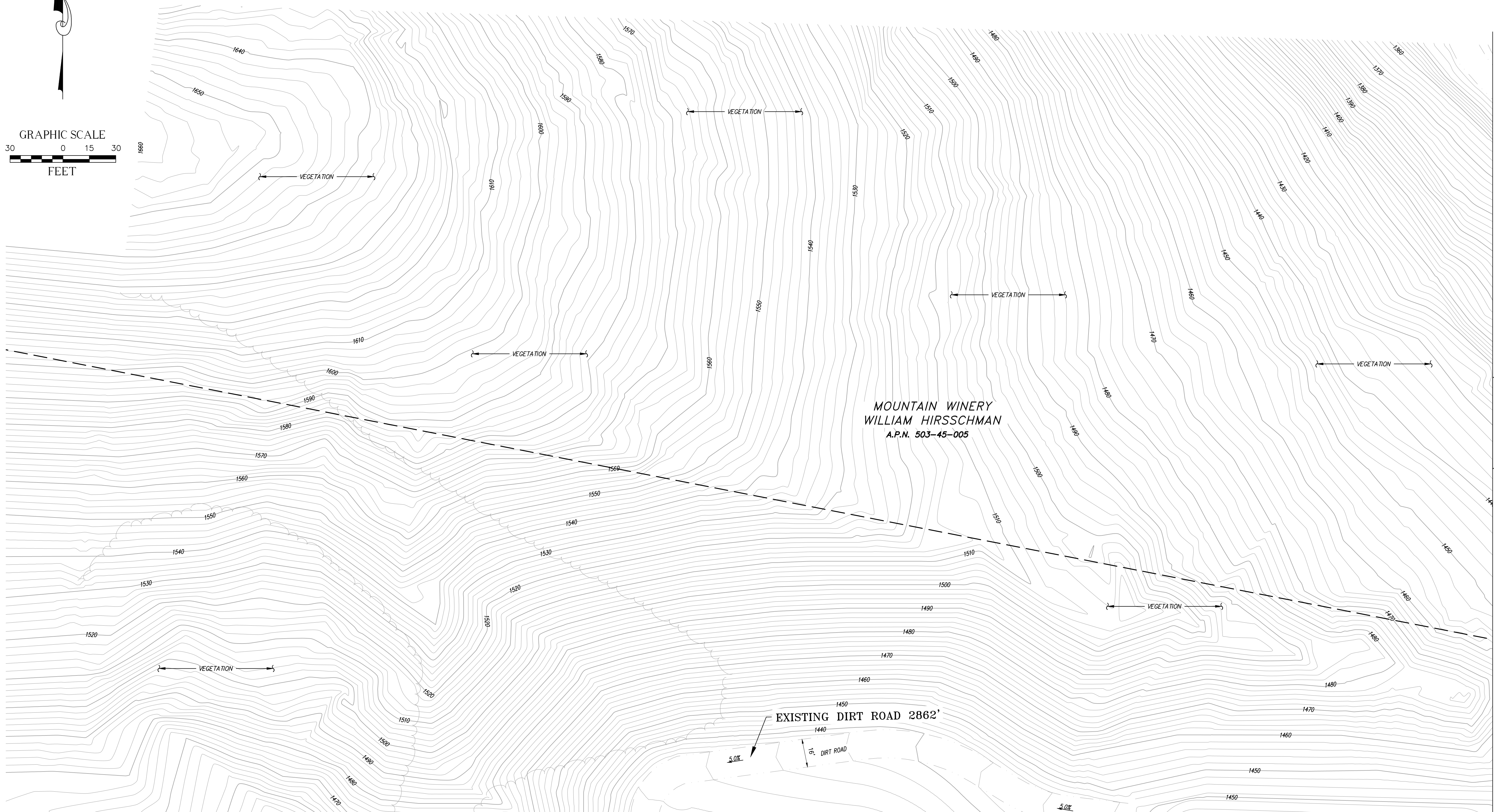
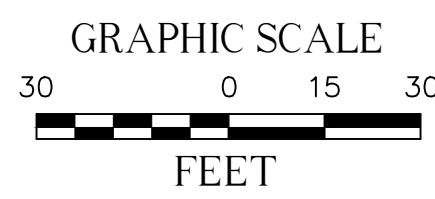
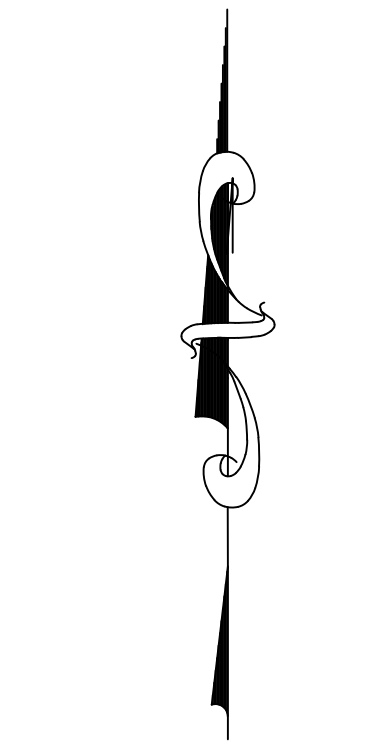
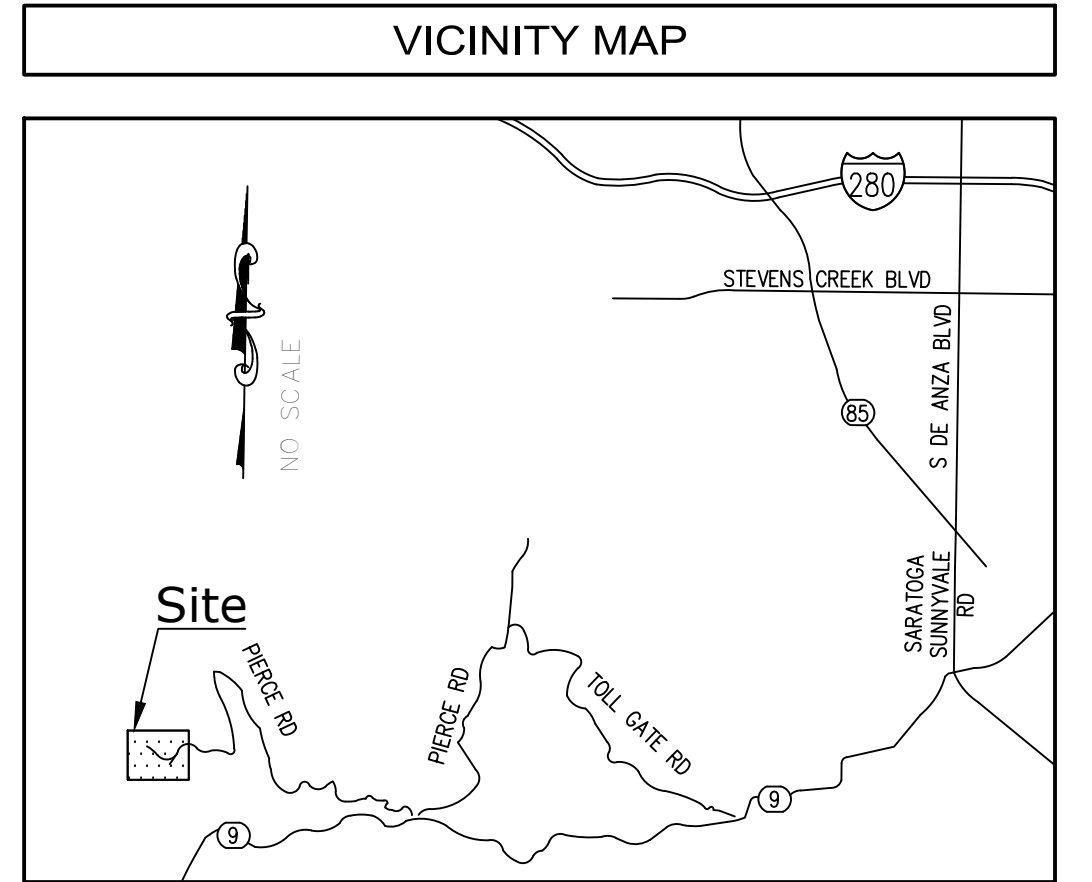
CONTROL POINTS				
CP#	NORTHING	EASTING	ELEVATION	DESCRIPTION
CP	.	.	.	SET
CP	.	.	.	SET
CP	.	.	.	SET
CP	.	.	.	SET
CP	.	.	.	SET
CP	.	.	.	SET
CP	.	.	.	SET
CP	.	.	.	SET
CP101	1918884.41'	6105002.75'	1179.90'	SET MAGNETIC NAIL & SHINER
CP103	1918814.39'	6104753.17'	1222.44'	SET MAGNETIC NAIL & SHINER
CP151	1918743.19'	6104950.58'	1179.10'	SET 60D NAIL
CP168	1918939.63'	6105231.69'	1157.08'	SET MAGNETIC NAIL & SHINER
CP308	1918916.90'	6104615.37'	1250.04'	SET MAGNETIC NAIL & SHINER
CP354	1919042.12'	6104892.65'	1273.84'	SET 60D NAIL W/WHISKER
CP370	1918989.10'	6104903.83'	1254.66'	SET 60D NAIL W/WHISKER
CP2089	1918896.70'	6105733.31'	1121.74'	SET 60D NAIL W/WHISKER

MONUMENT NOTES	
MON.#	DESCRIPTION
M331	FD. 1.5" IRON PIPE OPEN DOWN 1.5' PER C.R. 2261
M514	FD. 3/4" IRON PIPE OPEN PER C.R. 2261
M516	FD. 1.5" IRON PIPE W/NAIL UP 0.1' PER C.R. 2261

REVISIONS				UTILITY STATEMENT		PREPARED FOR		BASIS OF BEARINGS		BENCHMARK		SITE INFORMATION		SURVEYOR OF RECORD	
NO.	DATE	REVISIONS	BY	BURIED UTILITIES AND/OR PIPELINES SHOWN HEREON ARE PER VISIBLE AND APPARENT SURFACE EVIDENCE. RECORD DRAWINGS OF THE CONSTRUCTED UTILITY LINES OBTAINED FROM RELIABLE AND RESPONSIBLE SOURCES NOT CONNECTED WITH CALVADA SURVEYING, INC. OR MARKINGS PROVIDED BY AN INDEPENDENT LOCATING CONTRACTOR. NO GUARANTEE OR WARRANTY, EITHER EXPRESSED OR IMPLIED, IS MADE AS TO THE ACCURACY OR THOROUGHNESS OF SUCH INFORMATION. IF MORE ACCURATE LOCATIONS OF UNDERGROUND UTILITIES OR PIPE LINES ARE REQUIRED, THE UTILITY OR PIPELINE WILL HAVE TO BE VERIFIED BY FIELD POT-HOLING. CALVADA SURVEYING, INC. AND THE SURVEYOR OF RECORD SHALL NOT BE HELD LIABLE FOR THE LOCATION OF OR THE FAILURE TO NOTE THE LOCATION OF NON-VISIBLE UTILITIES OR PIPELINES.		ELEMENT HOMES LOS ANGELES, CA 90039 PHONE: (650) 384-5234		S.N.A. CSJB: NORTHING = 1941490.40' EASTING = 6166245.16' S.N.A. CAGL: NORTHING = 1830976.82' EASTING = 61259157.41'		ELEVATIONS SHOWN HEREON ARE BASED UPON CITY OF SARATOGA BENCHMARK RM-36, ELEVATION 502.08 FEET (NAVD 88). DESCRIPTION: USC&GS P-388 AT SARATOGA, AT THE INTERSECTION OF STATE HIGHWAY 9 AND 4TH STREET, IN THE TOP OF THE SOUTHEAST AND OF A CONCRETE RETAINING WALL, 44.6 FEET NORTHWEST OF THE CENTERLINE OF THE HIGHWAY, 15.5 FEET NORTHEAST OF THE CENTERLINE OF THE STREET.		SITE NAME: SARATOGA AERIAL - TOPOGRAPHIC SURVEY SITE ADDRESS: 14910 PIERCE ROAD, SARATOGA, CA 95070 SANTA CLARA COUNTY ASSESSOR'S PARCEL NO.: 503-45-005		<p>CALVADA SURVEYING, INC. 411 Jenks Cir., Suite 205, Corona, CA 92680 Phone: 951-280-9960 Fax: 951-280-9746 Toll Free: 800-CALVADA www.calvada.com EST. 1989 JOB NO. 22435</p>	
0	08/01/22	SUBMITTAL	DM	<p>Call: TOLL FREE 1-800-227-2600 TWO WORKING DAYS BEFORE YOU DIG</p>										FIELD COMPLETION DATE: JUNE 10, 2022	

AERIAL - TOPOGRAPHIC SURVEY

APPROXIMATE ADDRESS: 14910 PIERCE ROAD, SARATOGA, CA 95070



LEGEND

- ASPHALT PAVEMENT
- CONCRETE PAVEMENT
- CONTROL POINT
- FIRE HYDRANT
- FOUND MONUMENT AS NOTED
- POWER POLE
- POWER POLE W/TRANSFORMER
- UNKNOWN MANHOLE
- APN
- CENTERLINE
- DRAIN INLET
- FS
- FL
- NG
- PROPERTY LINE
- TOG
- CHAIN LINK FENCE
- CONCRETE/RETAINING WALL
- EDGE OF PAVEMENT
- FLOW LINE
- INTERIOR LOT LINE
- OVERHANG
- OVERHEAD LINE
- RIDGE LINE
- TOP OF SLOPE

MONUMENT NOTES

MON.#	DESCRIPTION
M331	FD. 1.5" IRON PIPE OPEN DOWN 1.5' PER C.R. 2261
M514	FD. 3/4" IRON PIPE OPEN PER C.R. 2261
M516	FD. 1.5" IRON PIPE W/NAIL UP 0.1' PER C.R. 2261

CONTROL POINTS

CP#	NORTHING	EASTING	ELEVATION	DESCRIPTION
CP	.	.	.	SET
CP	.	.	.	SET
CP	.	.	.	SET
CP	.	.	.	SET
CP	.	.	.	SET
CP	.	.	.	SET
CP101	1918884.41'	6105002.75'	1179.90'	SET MAGNETIC NAIL & SHINER
CP103	1918814.39'	6104753.17'	1222.44'	SET MAGNETIC NAIL & SHINER
CP151	1918743.19'	6104950.58'	1179.10'	SET 60D NAIL
CP168	1918939.63'	6105231.69'	1157.08'	SET MAGNETIC NAIL & SHINER
CP308	1918916.90'	6104615.37'	1250.04'	SET MAGNETIC NAIL & SHINER
CP354	1919042.12'	6104892.65'	1273.84'	SET 60D NAIL W/WHISKER
CP370	1918989.10'	6104903.83'	1254.66'	SET 60D NAIL W/WHISKER
CP2089	1918896.70'	6105733.31'	1121.74'	SET 60D NAIL W/WHISKER

SEE SHEET 4

SEE SHEET 3

REVISIONS			
NO.	DATE	REVISIONS	BY
0	08/01/22	SUBMITTAL	DM

UTILITY STATEMENT

BURIED UTILITIES AND/OR PIPELINES SHOWN HEREON ARE PER VISIBLE AND APPARENT SURFACE EVIDENCE, RECORD DRAWINGS OF THE CONSTRUCTED UTILITY LINES OBTAINED FROM RELIABLE AND RESPONSIBLE SOURCES NOT PROVIDED BY AN INDEPENDENT LOCATING CONTRACTOR. NO GUARANTEE OR WARRANTY, EITHER EXPRESSED OR IMPLIED, IS MADE AS TO THE ACCURACY OR THOROUGHNESS OF SUCH INFORMATION. IF MORE ACCURATE LOCATIONS OF UNDERGROUND UTILITIES OR PIPE LINES ARE REQUIRED, THE UTILITY OR PIPELINE WILL HAVE TO BE VERIFIED BY FIELD POT-HOLING. CALVADA SURVEYING, INC. AND THE SURVEYOR OF RECORD SHALL NOT BE HELD LIABLE FOR THE LOCATION OF OR THE FAILURE TO NOTE THE LOCATION OF NON-VISIBLE UTILITIES OR PIPELINES.

Underground Service Alert

Call: TOLL FREE 1-800-227-2600

TWO WORKING DAYS BEFORE YOU DIG

PREPARED FOR

ELEMENT HOMES
LOS ANGELES, CA 90039
PHONE: (650) 384-5234

BASIS OF BEARINGS

THE BEARINGS SHOWN HEREON ARE BASED UPON THE CALIFORNIA COORDINATE SYSTEM OF 1983, CCS83, ZONE III, (2022.75) IN ACCORDANCE TO THE CALIFORNIA PUBLIC RESOURCES CODE SECTIONS 8801-8819; SAID BEARINGS ARE DETERMINED LOCALLY UPON FIELD-OBSERVED TIES TO THE FOLLOWING LEICA SMARTNET NORTH AMERICA (S.N.N.A.) CONTINUOUSLY OPERATING REFERENCE STATIONS (C.O.R.S.):

S.N.N.A. CSJB:
NORTHING = 1941490.40' EASTING = 6166245.16'

S.N.N.A. CAGL:
NORTHING = 1830976.82' EASTING = 6251957.41'

BENCHMARK

ELEVATIONS SHOWN HEREON ARE BASED UPON CITY OF SARATOGA BENCHMARK RM-36, ELEVATION 502.08 FEET (NAVD 88).

DESCRIPTION: USC&GS P-388 AT SARATOGA, AT THE INTERSECTION OF STATE HIGHWAY 9 AND 4TH STREET, IN THE TOP OF THE SOUTHEAST AND OF A CONCRETE RETAINING WALL, 44.6 FEET NORTHWEST OF THE CENTERLINE OF THE HIGHWAY, 15.5 FEET NORTHEAST OF THE CENTERLINE OF THE STREET.

SITE INFORMATION

SITE NAME: SARATOGA AERIAL - TOPOGRAPHIC SURVEY
SITE ADDRESS: 14910 PIERCE ROAD, SARATOGA, CA 95070
SANTA CLARA COUNTY
ASSESSOR'S PARCEL NO.: 503-45-005

SURVEYOR OF RECORD FIELD COMPLETION DATE: JUNE 10, 2022

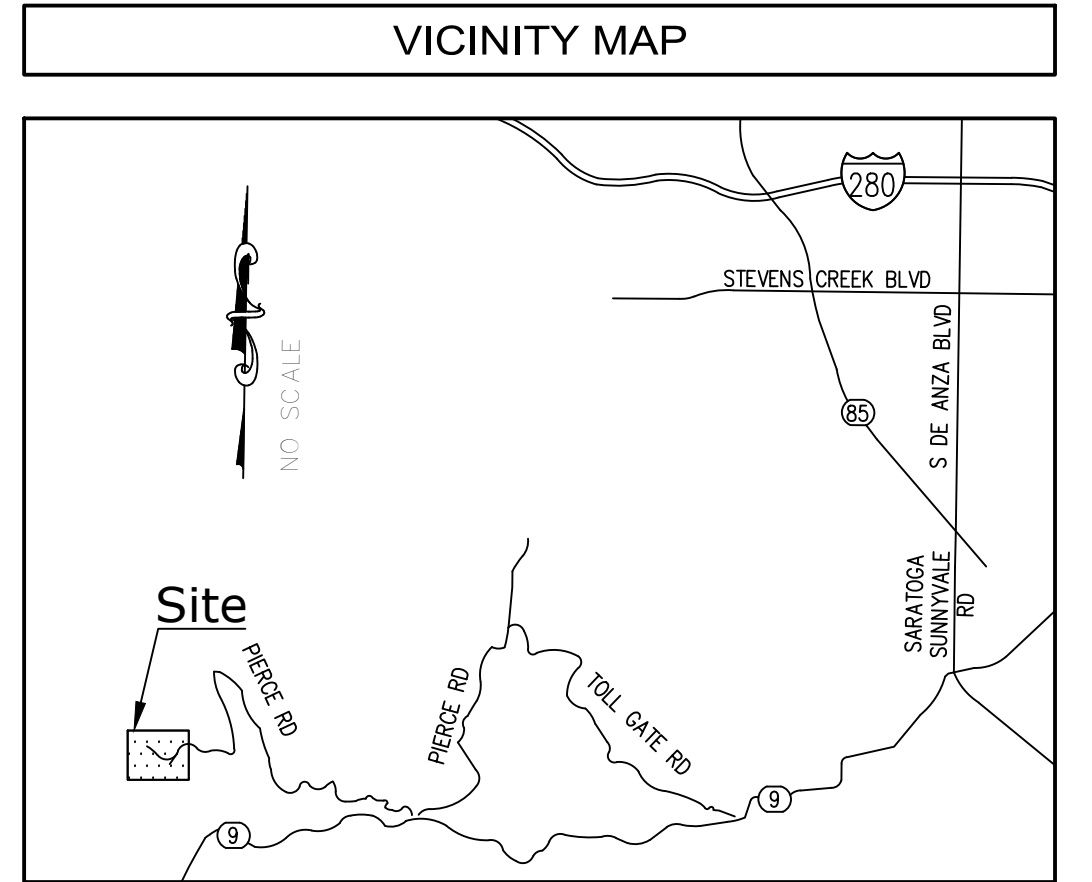
CALVADA SURVEYING, INC.

411 Jenks Cir., Suite 205, Corona, CA 92880
Phone: 951-280-9960 Fax: 951-280-9746
Toll Free: 800-CALVADA www.calvada.com
EST. 1989 JOB NO. 22435

Armando D. DuPont
Registration No. 7780

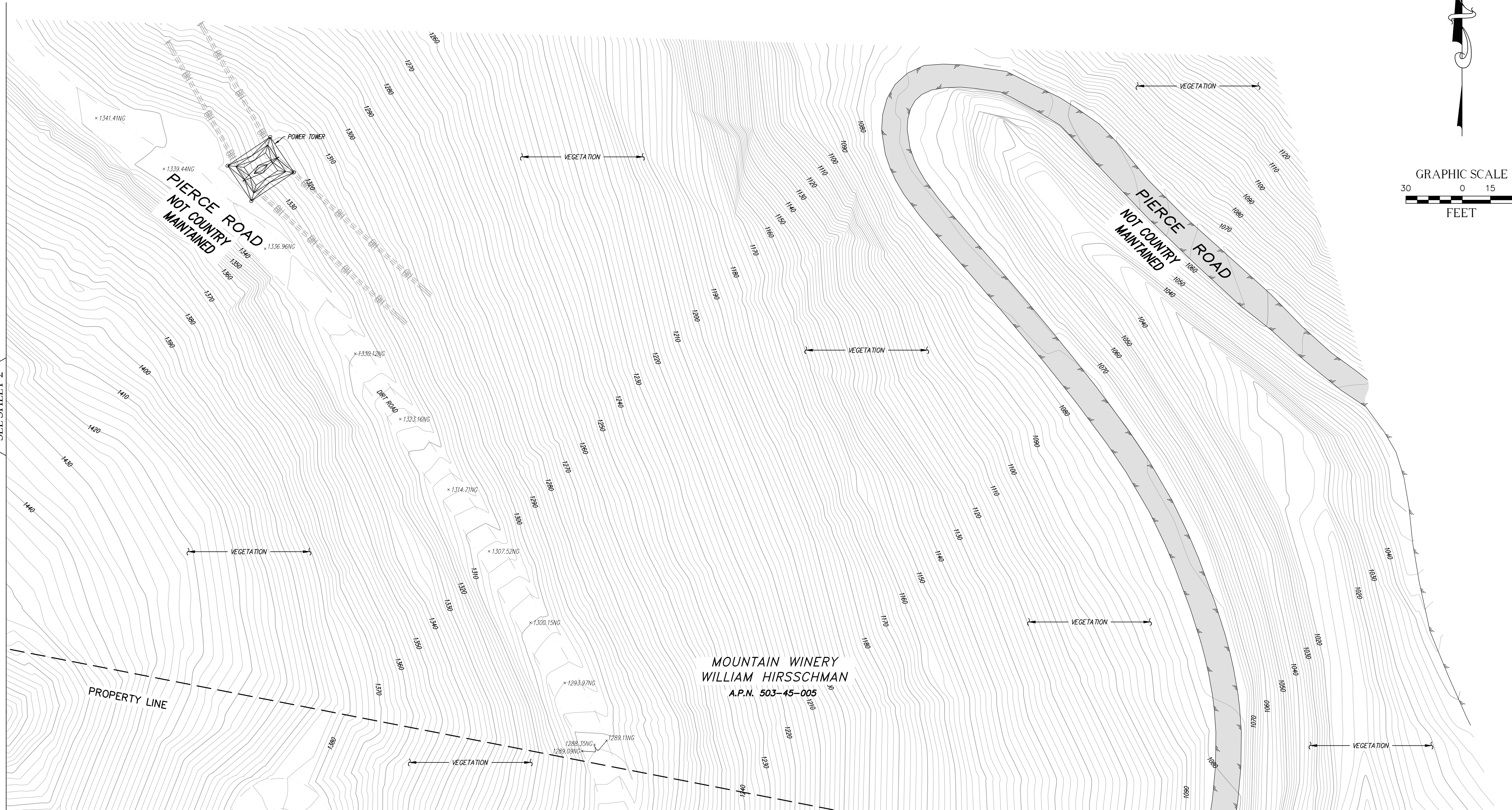
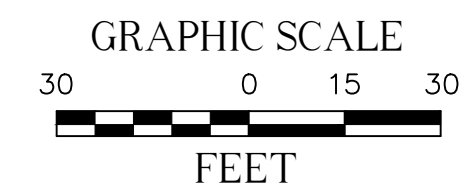
AERIAL - TOPOGRAPHIC SURVEY

APPROXIMATE ADDRESS: 14910 PIERCE ROAD, SARATOGA, CA 95070



LEGEND

- ASPHALT PAVEMENT
- CONCRETE PAVEMENT
- CONTROL POINT
- FIRE HYDRANT
- FOUND MONUMENT AS NOTED
- POWER POLE
- POWER POLE W/TRANSFORMER
- UNKNOWN MANHOLE
- APN
- CENTERLINE
- DI
- FS
- FL
- NG
- PROPERTY LINE
- TOG
- CHAIN LINK FENCE
- CONCRETE/RETAINING WALL
- EDGE OF PAVEMENT
- FLOW LINE
- INTERIOR LOT LINE
- OVERHANG
- OVERHEAD LINE
- RIDGE LINE
- TOP OF SLOPE



MONUMENT NOTES

MON.#	DESCRIPTION
M331	FD. 1.5" IRON PIPE OPEN DOWN 1.5' PER C.R. 2261
M514	FD. 3/4" IRON PIPE OPEN PER C.R. 2261
M516	FD. 1.5" IRON PIPE W/NAIL UP 0.1' PER C.R. 2261

CONTROL POINTS

CP#	NORTHING	EASTING	ELEVATION	DESCRIPTION
CP	.	.	.	SET
CP	.	.	.	SET
CP	.	.	.	SET
CP	.	.	.	SET
CP	.	.	.	SET
CP	.	.	.	SET
CP	.	.	.	SET
CP101	1918884.41'	6105002.75'	1179.90'	SET MAGNETIC NAIL & SHINER
CP103	1918814.39'	6104753.17'	1222.44'	SET MAGNETIC NAIL & SHINER
CP151	1918743.19'	6104950.58'	1179.10'	SET 60D NAIL
CP168	1918939.63'	6105231.69'	1157.08'	SET MAGNETIC NAIL & SHINER
CP308	1918916.90'	6104615.37'	1250.04'	SET MAGNETIC NAIL & SHINER
CP354	1919042.12'	6104892.65'	1273.84'	SET 60D NAIL W/WHISKER
CP370	1918989.10'	6104903.83'	1254.66'	SET 60D NAIL W/WHISKER
CP2089	1918896.70'	6105733.31'	1121.74'	SET 60D NAIL W/WHISKER

REVISIONS			
NO.	DATE	REVISIONS	BY
0	08/01/22	SUBMITTAL	DM

UTILITY STATEMENT

BURIED UTILITIES AND/OR PIPELINES SHOWN HEREON ARE PER VISIBLE AND APPARENT SURFACE EVIDENCE, RECORD DRAWINGS OF THE CONSTRUCTED UTILITY LINES OBTAINED FROM RELIABLE AND RESPONSIBLE SOURCES NOT CONNECTED WITH CALVADA SURVEYING, INC. OR MARKINGS PROVIDED BY AN INDEPENDENT LOCATING CONTRACTOR. NO GUARANTEE OR WARRANTY, EITHER EXPRESSED OR IMPLIED, IS MADE AS TO THE ACCURACY OR THOROUGHNESS OF SUCH INFORMATION. IF MORE ACCURATE LOCATIONS OF UNDERGROUND UTILITIES OR PIPE LINES ARE REQUIRED, THE UTILITY OR PIPELINE WILL HAVE TO BE VERIFIED BY FIELD POT-HOLING. CALVADA SURVEYING, INC. AND THE SURVEYOR OF RECORD SHALL NOT BE HELD LIABLE FOR THE LOCATION OF OR THE FAILURE TO NOTE THE LOCATION OF NON-VISIBLE UTILITIES OR PIPELINES.

Underground Service Alert

Call: TOLL FREE 1-800-227-2600

TWO WORKING DAYS BEFORE YOU DIG

PREPARED FOR

ELEMENT HOMES
LOS ANGELES, CA 90039
PHONE: (650) 384-5234

BASIS OF BEARINGS

THE BEARINGS SHOWN HEREON ARE BASED UPON THE CALIFORNIA COORDINATE SYSTEM OF 1983, CCS83, ZONE III, (2022.75) IN ACCORDANCE TO THE CALIFORNIA PUBLIC RESOURCES CODE SECTIONS 8801-8819; SAID BEARINGS ARE DETERMINED LOCALLY UPON FIELD-OBSERVED TIES TO THE FOLLOWING LEICA SMARTNET NORTH AMERICA (S.N.N.A.) CONTINUOUSLY OPERATING REFERENCE STATIONS (C.O.R.S.):

S.N.N.A. CSJB:
NORTHING = 1941490.40' EASTING = 6166245.16'

S.N.N.A. CAGL:
NORTHING = 1830976.82' EASTING = 6251957.41'

BENCHMARK

ELEVATIONS SHOWN HEREON ARE BASED UPON CITY OF SARATOGA BENCHMARK RM-36, ELEVATION 502.08 FEET (NAVD 88).

DESCRIPTION: USC&GS P-388 AT SARATOGA, AT THE INTERSECTION OF STATE HIGHWAY 9 AND 4TH STREET, IN THE TOP OF THE SOUTHEAST AND OF A CONCRETE RETAINING WALL, 44.6 FEET NORTHWEST OF THE CENTERLINE OF THE HIGHWAY, 15.5 FEET NORTHEAST OF THE CENTERLINE OF THE STREET.

SITE INFORMATION

SITE NAME: SARATOGA AERIAL - TOPOGRAPHIC SURVEY
SITE ADDRESS: 14910 PIERCE ROAD, SARATOGA, CA 95070
SANTA CLARA COUNTY

ASSESSOR'S PARCEL NO.: 503-45-005

SURVEYOR OF RECORD

FIELD COMPLETION DATE: JUNE 10, 2022

CALVADA SURVEYING, INC.

411 Jenks Cir., Suite 205, Corona, CA 92880
Phone: 951-280-9960 Fax: 951-280-9746
Toll Free: 800-CALVADA www.calvada.com

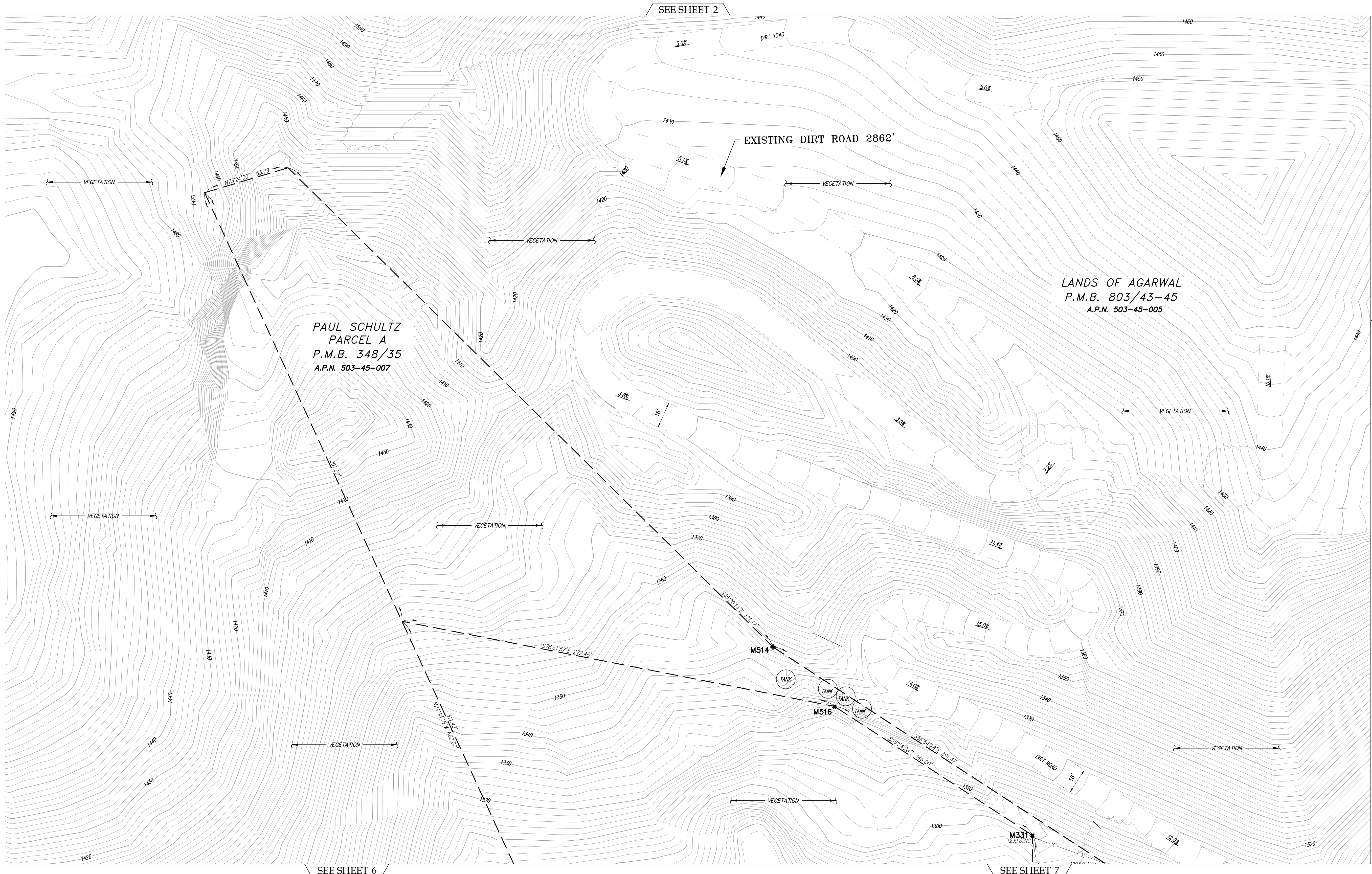
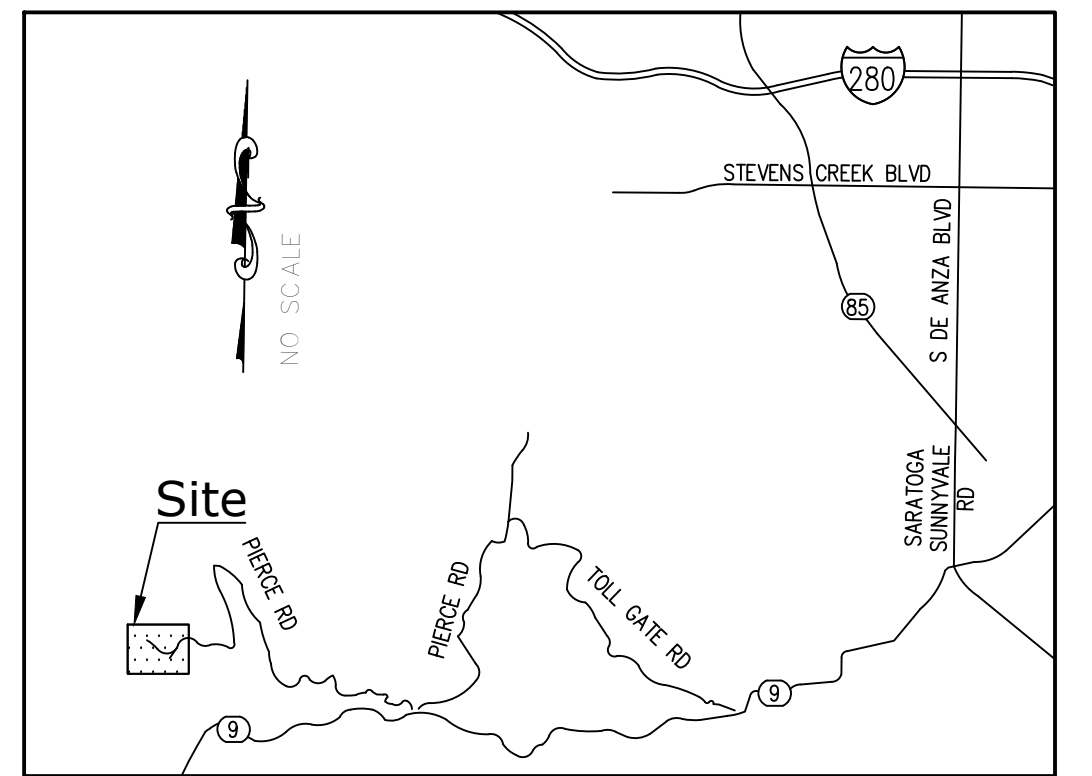
EST. 1989 JOB NO. 22435

Armando D. DuPont
Registration No. 7780

AERIAL - TOPOGRAPHIC SURVEY

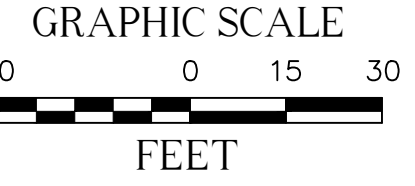
APPROXIMATE ADDRESS: 14910 PIERCE ROAD, SARATOGA, CA 95070

VICINITY MAP



LEGEND

	ASPHALT PAVEMENT
	CONCRETE PAVEMENT
	CONTROL POINT
	FIRE HYDRANT
	FOUND MONUMENT AS NOTED
	POWER POLE
	POWER POLE W/TRANSFORMER
	UNKNOWN MANHOLE
	ASSESSOR'S PARCEL NUMBER
	CENTERLINE
	DRAIN INLET
	FINISH SURFACE
	FLOW LINE
	NATURAL GROUND
	PROPERTY LINE
	TOP OF GRATE
	CHAIN LINK FENCE
	CONCRETE/RETAINING WALL
	EDGE OF PAVEMENT
	FLOW LINE
	INTERIOR LOT LINE
	OVERHANG
	OVERHEAD LINE
	RIDGE LINE
	TOP OF SLOPE



MONUMENT NOTES

MON.#	DESCRIPTION
M331	FD. 1.5" IRON PIPE OPEN DOWN 1.5' PER C.R. 2261
M514	FD. 3/4" IRON PIPE OPEN PER C.R. 2261
M516	FD. 1.5" IRON PIPE W/NAIL UP 0.1' PER C.R. 2261

CONTROL POINTS

CP#	NORTHING	EASTING	ELEVATION	DESCRIPTION
CP	.	.	.	SET
CP	.	.	.	SET
CP	.	.	.	SET
CP	.	.	.	SET
CP	.	.	.	SET
CP	.	.	.	SET
CP	.	.	.	SET
CP101	1918884.41'	6105002.75'	1179.90'	SET MAGNETIC NAIL & SHINER
CP103	1918814.39'	6104753.17'	1222.44'	SET MAGNETIC NAIL & SHINER
CP151	1918743.19'	6104950.58'	1179.10'	SET 60D NAIL
CP168	1918939.63'	6105231.69'	1157.08'	SET MAGNETIC NAIL & SHINER
CP308	1918916.90'	6104615.37'	1250.04'	SET MAGNETIC NAIL & SHINER
CP354	1919042.12'	6104892.65'	1273.84'	SET 60D NAIL W/WHISKER
CP370	1918989.10'	6104903.83'	1254.66'	SET 60D NAIL W/WHISKER
CP2089	1918896.70'	6105733.31'	1121.74'	SET 60D NAIL W/WHISKER

REVISIONS

NO.	DATE	REVISIONS	BY
0	08/01/22	SUBMITTAL	DM

UTILITY STATEMENT

BURIED UTILITIES AND/OR PIPELINES SHOWN HEREON ARE PER VISIBLE AND APPARENT SURFACE EVIDENCE. HEREON DRAWINGS OF THE CONSTRUCTED UTILITY LINES OBTAINED FROM RELIABLE AND RESPONSIBLE SOURCES NOT CONNECTED WITH CALVADA SURVEYING, INC. OR MARKINGS PROVIDED BY AN INDEPENDENT LOCATING CONTRACTOR. NO GUARANTEE OR WARRANTY, EITHER EXPRESSED OR IMPLIED, IS MADE AS TO THE ACCURACY OR THOROUGHNESS OF SUCH INFORMATION. IF MORE ACCURATE LOCATIONS OF UNDERGROUND UTILITIES OR PIPE LINES ARE REQUIRED, THE UTILITY OR PIPELINE WILL HAVE TO BE VERIFIED BY FIELD POT-HOLING. CALVADA SURVEYING, INC. AND THE SURVEYOR OF RECORD SHALL NOT BE HELD LIABLE FOR THE LOCATION OF OR THE FAILURE TO NOTE THE LOCATION OF NON-VISIBLE UTILITIES OR PIPELINES.

Underground Service Alert
Call: TOLL FREE 1-800-227-2600
TWO WORKING DAYS BEFORE YOU DIG

PREPARED FOR

ELEMENT HOMES
LOS ANGELES, CA 90039
PHONE: (650) 384-5234

BASIS OF BEARINGS

THE BEARINGS SHOWN HEREON ARE BASED UPON THE CALIFORNIA COORDINATE SYSTEM OF 1983, CCS83, ZONE III, (2022.75) IN ACCORDANCE TO THE CALIFORNIA PUBLIC RESOURCES CODE SECTIONS 8801-8819; SAID BEARINGS ARE DETERMINED LOCALLY UPON FIELD-OBSERVED TIES TO THE FOLLOWING LEICA SMARTNET NORTH AMERICA (S.N.N.A.) CONTINUOUSLY OPERATING REFERENCE STATIONS (C.O.R.S.):

S.N.N.A. CSJB:
NORTHING = 1941490.40' EASTING = 6166245.16'

S.N.N.A. CAGL:
NORTHING = 1830976.82' EASTING = 6251957.41'

BENCHMARK

ELEVATIONS SHOWN HEREON ARE BASED UPON CITY OF SARATOGA BENCHMARK RM-36, ELEVATION 502.08 FEET (NAVD 88).

DESCRIPTION: USCGS P-388 AT SARATOGA, AT THE INTERSECTION OF STATE HIGHWAY 9 AND 4TH STREET, IN THE TOP OF THE SOUTHEAST AND OF A CONCRETE RETAINING WALL, 44.6 FEET NORTHWEST OF THE CENTERLINE OF THE HIGHWAY, 15.5 FEET NORTHEAST OF THE CENTERLINE OF THE STREET.

SITE INFORMATION

SITE NAME: SARATOGA AERIAL - TOPOGRAPHIC SURVEY
SITE ADDRESS: 14910 PIERCE ROAD, SARATOGA, CA 95070
ASSESSOR'S PARCEL NO.: 503-45-005

SURVEYOR OF RECORD

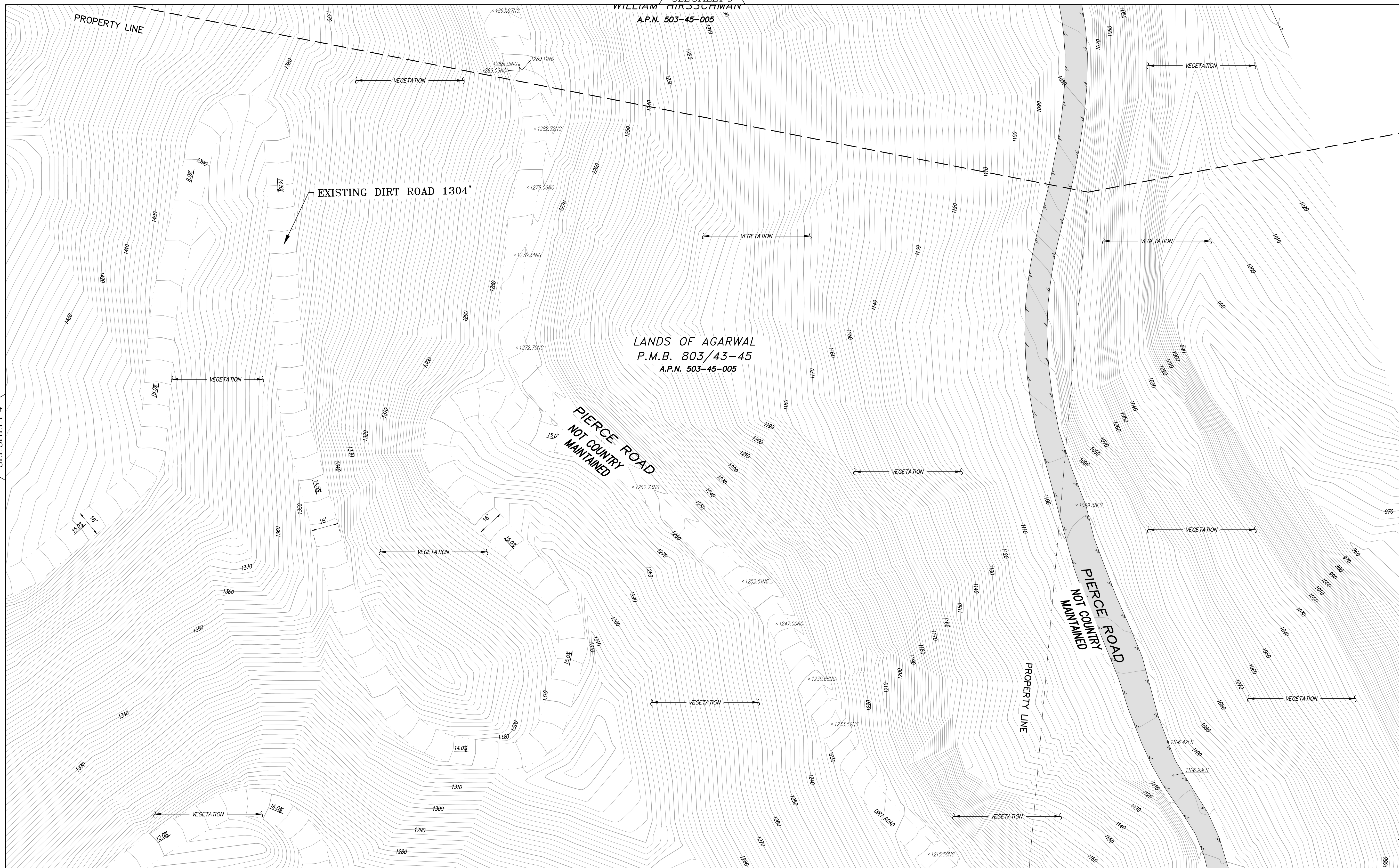
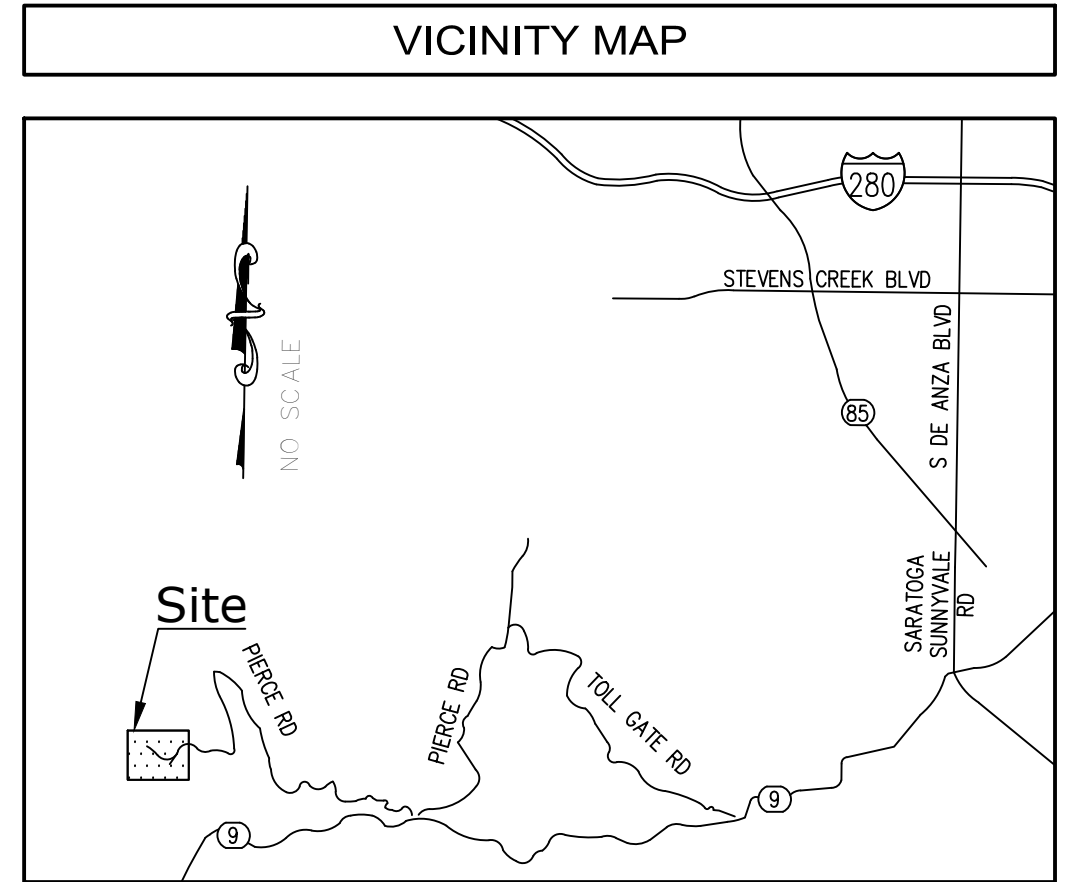
FIELD COMPLETION DATE: JUNE 10, 2022

CALVADA SURVEYING, INC.
411 Jenks Cir., Suite 205, Corona, CA 92680
Phone: 951-280-9960 Fax: 951-280-9746
Toll Free: 800-CALVADA www.calvada.com
EST. 1989 JOB NO. 22435

Armando D. DuPont
Registration No. 7780

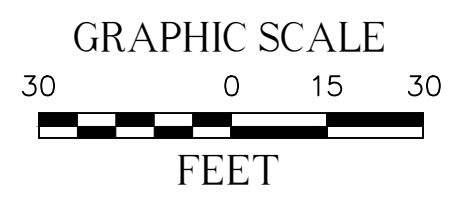
AERIAL - TOPOGRAPHIC SURVEY

APPROXIMATE ADDRESS: 14910 PIERCE ROAD, SARATOGA, CA 95070



LEGEND

	ASPHALT PAVEMENT
	CONCRETE PAVEMENT
	CONTROL POINT
	FIRE HYDRANT
	FOUND MONUMENT AS NOTED
	POWER POLE
	POWER POLE W/TRANSFORMER
	UNKNOWN MANHOLE
	ASSESSOR'S PARCEL NUMBER
	CENTERLINE
	DRAIN INLET
	FINISH SURFACE
	FLOW LINE
	NATURAL GROUND
	PROPERTY LINE
	TOP OF GRATE
	CHAIN LINK FENCE
	CONCRETE/RETAINING WALL
	EDGE OF PAVEMENT
	FLOW LINE
	INTERIOR LOT LINE
	OVERHANG
	OVERHEAD LINE
	RIGE LINE
	TOP OF SLOPE



MONUMENT NOTES

MON.#	DESCRIPTION
M331	FD. 1.5" IRON PIPE OPEN DOWN 1.5' PER C.R. 2261
M514	FD. 3/4" IRON PIPE OPEN PER C.R. 2261
M516	FD. 1.5" IRON PIPE W/NAIL UP 0.1' PER C.R. 2261

CONTROL POINTS

CP#	NORTHING	EASTING	ELEVATION	DESCRIPTION
CP	.	.	.	SET
CP	.	.	.	SET
CP	.	.	.	SET
CP	.	.	.	SET
CP	.	.	.	SET
CP	.	.	.	SET
CP	.	.	.	SET
CP101	1918884.41'	6105002.75'	1179.90'	SET MAGNETIC NAIL & SHINER
CP103	1918814.39'	6104753.17'	1222.44'	SET MAGNETIC NAIL & SHINER
CP151	1918743.19'	6104950.58'	1179.10'	SET 60D NAIL
CP168	1918939.63'	6105231.69'	1157.08'	SET MAGNETIC NAIL & SHINER
CP308	1918916.90'	6104615.37'	1250.04'	SET MAGNETIC NAIL & SHINER
CP354	1919042.12'	6104892.65'	1273.84'	SET 60D NAIL W/WHISKER
CP370	1918989.10'	6104903.83'	1254.66'	SET 60D NAIL W/WHISKER
CP2089	1918896.70'	6105733.31'	1121.74'	SET 60D NAIL W/WHISKER

REVISIONS

NO.	DATE	REVISIONS	BY
0	08/01/22	SUBMITTAL	DM

UTILITY STATEMENT

BURIED UTILITIES AND/OR PIPELINES SHOWN HEREON ARE PER VISIBLE AND APPARENT SURFACE EVIDENCE, RECORDED DRAWINGS OF THE CONSTRUCTED UTILITY LINES OBTAINED FROM RELIABLE AND RESPONSIBLE SOURCES NOT CONNECTED WITH CALVADA SURVEYING, INC. OR MARKINGS PROVIDED BY AN INDEPENDENT LOCATING CONTRACTOR. NO GUARANTEE OR WARRANTY, EITHER EXPRESSED OR IMPLIED, IS MADE AS TO THE ACCURACY OR THOROUGHNESS OF SUCH INFORMATION. IF MORE ACCURATE LOCATIONS OF UNDERGROUND UTILITIES OR PIPE LINES ARE REQUIRED, THE UTILITY OR PIPELINE WILL HAVE TO BE VERIFIED BY FIELD POT-HOLING. CALVADA SURVEYING, INC. AND THE SURVEYOR OF RECORD SHALL NOT BE HELD LIABLE FOR THE LOCATION OF OR THE FAILURE TO NOTE THE LOCATION OF NON-VISIBLE UTILITIES OR PIPELINES.

Underground Service Alert

Call: TOLL FREE 1-800-227-2600

TWO WORKING DAYS BEFORE YOU DIG

PREPARED FOR

ELEMENT HOMES
LOS ANGELES, CA 90039
PHONE: (650) 384-5234

BASIS OF BEARINGS

THE BEARINGS SHOWN HEREON ARE BASED UPON THE CALIFORNIA COORDINATE SYSTEM OF 1983, CCS83, ZONE III, (2022.75) IN ACCORDANCE TO THE CALIFORNIA PUBLIC RESOURCES CODE SECTIONS 8801-8819; SAID BEARINGS ARE DETERMINED LOCALLY UPON FIELD-OBSERVED TIES TO THE FOLLOWING LEICA SMARTNET NORTH AMERICA (S.N.A.) CONTINUOUSLY OPERATING REFERENCE STATIONS (C.O.R.S.):

S.N.A. CSJB:
NORTHING = 1941490.40' EASTING = 6166245.16'

S.N.A. CAGL:
NORTHING = 1830976.82' EASTING = 6251957.41'

BENCHMARK

ELEVATIONS SHOWN HEREON ARE BASED UPON CITY OF SARATOGA BENCHMARK RM-36, ELEVATION 502.08 FEET (NAVD 88).

DESCRIPTION: USC&GS P-388 AT SARATOGA, AT THE INTERSECTION OF STATE HIGHWAY 9 AND 4TH STREET, IN THE TOP OF THE SOUTHEAST AND OF A CONCRETE RETAINING WALL, 44.6 FEET NORTHWEST OF THE CENTERLINE OF THE HIGHWAY, 15.5 FEET NORTHEAST OF THE CENTERLINE OF THE STREET.

SITE INFORMATION

SITE NAME: SARATOGA AERIAL - TOPOGRAPHIC SURVEY
SITE ADDRESS: 14910 PIERCE ROAD, SARATOGA, CA 95070
ASSESSOR'S PARCEL NO.: 503-45-005

SURVEYOR OF RECORD

FIELD COMPLETION DATE: JUNE 10, 2022

CALVADA SURVEYING, INC.

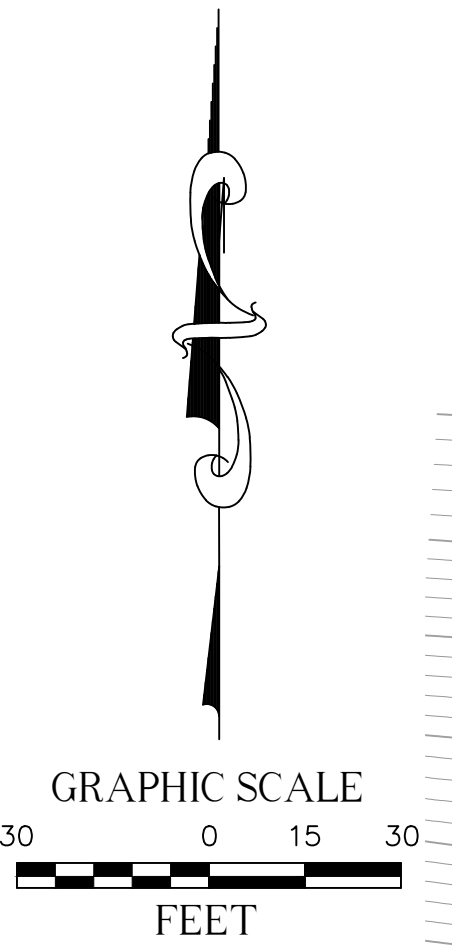
411 Jenks Cir., Suite 205, Corona, CA 92680
Phone: 951-280-9960 Fax: 951-280-9746
Toll Free: 800-CALVADA www.calvada.com
EST. 1989 JOB NO. 22435

Armando D. DuPont
Registration No. 7780

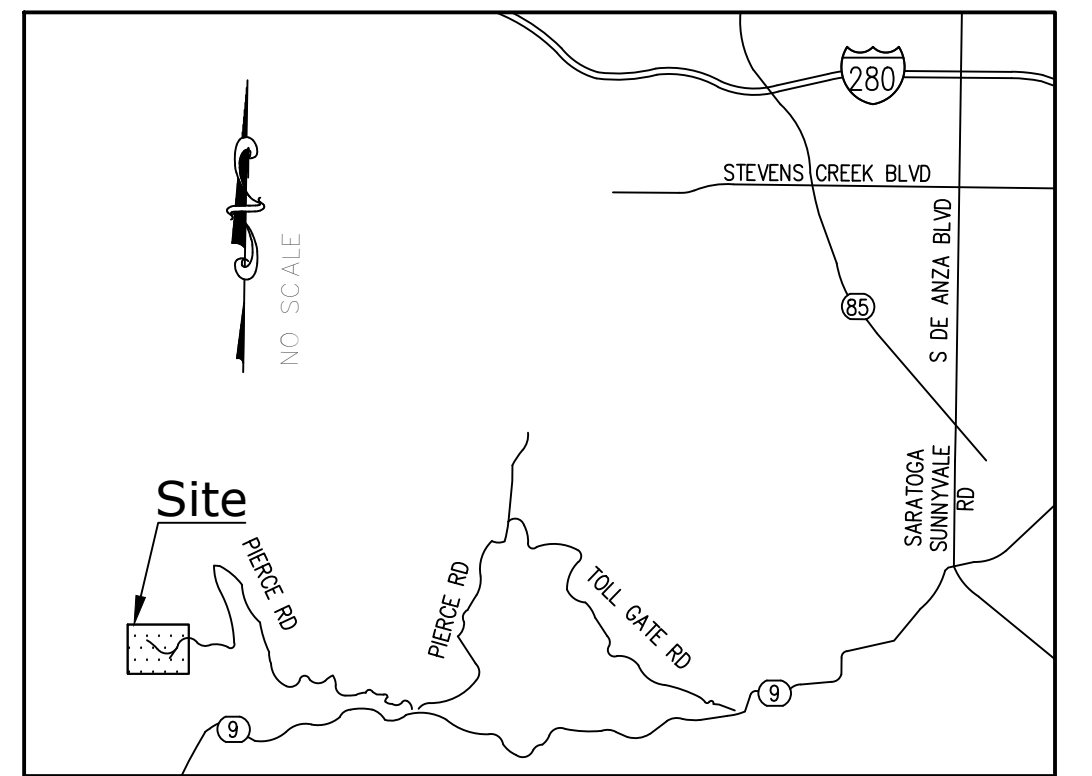
AERIAL - TOPOGRAPHIC SURVEY

APPROXIMATE ADDRESS: 14910 PIERCE ROAD, SARATOGA, CA 95070

SEE SHEET 4



VICINITY MAP



LEGEND

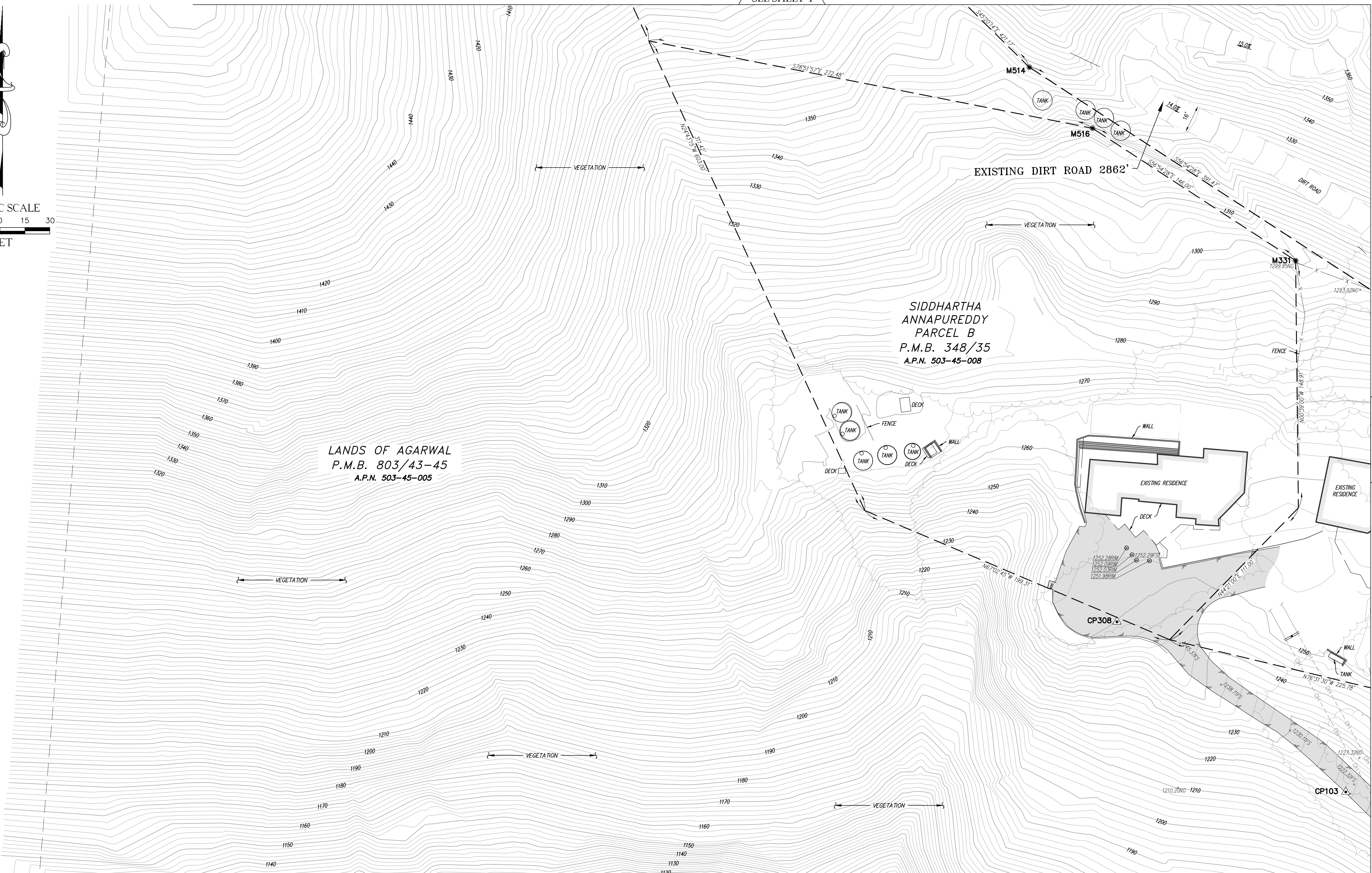
	ASPHALT PAVEMENT
	CONCRETE PAVEMENT
	CONTROL POINT
	FIRE HYDRANT
	FOUND MONUMENT AS NOTED
	POWER POLE
	POWER POLE W/TRANSFORMER
	UNKNOWN MANHOLE
	ASSESSOR'S PARCEL NUMBER
	CENTERLINE
	DRAIN INLET
	FINISH SURFACE
	FLOW LINE
	NATURAL GROUND
	PROPERTY LINE
	TOP OF GRATE
	CHAIN LINK FENCE
	CONCRETE/RETAINING WALL
	EDGE OF PAVEMENT
	FLOW LINE
	INTERIOR LOT LINE
	OVERHANG
	OVERHEAD LINE
	RIDGE LINE
	TOP OF SLOPE

MONUMENT NOTES

MON.#	DESCRIPTION
M331	FD. 1.5" IRON PIPE OPEN DOWN 1.5' PER C.R. 2261
M514	FD. 3/4" IRON PIPE OPEN PER C.R. 2261
M516	FD. 1.5" IRON PIPE W/NAIL UP 0.1' PER C.R. 2261

CONTROL POINTS

CP#	NORTHING	EASTING	ELEVATION	DESCRIPTION
CP	.	.	.	SET
CP	.	.	.	SET
CP	.	.	.	SET
CP	.	.	.	SET
CP	.	.	.	SET
CP	.	.	.	SET
CP101	1918884.41'	6105002.75'	1179.90'	SET MAGNETIC NAIL & SHINER
CP103	1918814.39'	6104753.17'	1222.44'	SET MAGNETIC NAIL & SHINER
CP151	1918743.19'	6104950.58'	1179.10'	SET 60D NAIL
CP168	1918939.63'	6105231.69'	1157.08'	SET MAGNETIC NAIL & SHINER
CP308	1918916.90'	6104615.37'	1250.04'	SET MAGNETIC NAIL & SHINER
CP354	1919042.12'	6104892.65'	1273.84'	SET 60D NAIL W/WHISKER
CP370	1918989.10'	6104903.83'	1254.66'	SET 60D NAIL W/WHISKER
CP2089	1918896.70'	6105733.31'	1121.74'	SET 60D NAIL W/WHISKER



SEE SHEET 9

SEE SHEET 7

REVISIONS			
NO.	DATE	REVISIONS	BY
0	08/01/22	SUBMITTAL	DM

UTILITY STATEMENT

BURIED UTILITIES AND/OR PIPELINES SHOWN HEREON ARE PER VISIBLE AND APPARENT SURFACE EVIDENCE, RECORD DRAWINGS OF THE CONSTRUCTED UTILITY LINES OBTAINED FROM RELIABLE AND RESPONSIBLE SOURCES NOT CONNECTED WITH CALVADA SURVEYING, INC. OR MARKINGS PROVIDED BY AN INDEPENDENT LOCATING CONTRACTOR. NO GUARANTEE OR WARRANTY, EITHER EXPRESSED OR IMPLIED, IS MADE AS TO THE ACCURACY OR THOROUGHNESS OF SUCH INFORMATION. IF MORE ACCURATE LOCATIONS OF UNDERGROUND UTILITIES OR PIPE LINES ARE REQUIRED, THE UTILITY OR PIPELINE WILL HAVE TO BE VERIFIED BY FIELD POT-HOLING. CALVADA SURVEYING, INC. AND THE SURVEYOR OF RECORD SHALL NOT BE HELD LIABLE FOR THE LOCATION OF OR THE FAILURE TO NOTE THE LOCATION OF NON-VISIBLE UTILITIES OR PIPELINES.

Underground Service Alert
Call: TOLL FREE 1-800-227-2600
TWO WORKING DAYS BEFORE YOU DIG

PREPARED FOR
ELEMENT HOMES
LOS ANGELES, CA 90039
PHONE: (650) 384-5234

BASIS OF BEARINGS
THE BEARINGS SHOWN HEREON ARE BASED UPON THE CALIFORNIA COORDINATE SYSTEM OF 1983, CCS83, ZONE III, (2022.75) IN ACCORDANCE TO THE CALIFORNIA PUBLIC RESOURCES CODE SECTIONS 8801-8819; SAID BEARINGS ARE DETERMINED LOCALLY UPON FIELD-OBSERVED TIES TO THE FOLLOWING LEICA SMARTNET NORTH AMERICA (S.N.A.) CONTINUOUSLY OPERATING REFERENCE STATIONS (C.O.R.S.):
S.N.A. CSJB:
NORTHING = 1941490.40' EASTING = 6166245.16'
S.N.A. CAGL:
NORTHING = 1830976.82' EASTING = 6251957.41'

BENCHMARK
ELEVATIONS SHOWN HEREON ARE BASED UPON CITY OF SARATOGA BENCHMARK RM-36, ELEVATION 502.08 FEET (NAVD 88).
DESCRIPTION: USC&GS P-388 AT SARATOGA, AT THE INTERSECTION OF STATE HIGHWAY 9 AND 4TH STREET, IN THE TOP OF THE SOUTHEAST AND OF A CONCRETE RETAINING WALL, 44.6 FEET NORTHWEST OF THE CENTERLINE OF THE HIGHWAY, 15.5 FEET NORTHEAST OF THE CENTERLINE OF THE STREET.

SITE INFORMATION
SITE NAME: SARATOGA AERIAL - TOPOGRAPHIC SURVEY
SITE ADDRESS: 14910 PIERCE ROAD, SARATOGA, CA 95070
SANTA CLARA COUNTY
ASSESSOR'S PARCEL NO.: 503-45-005

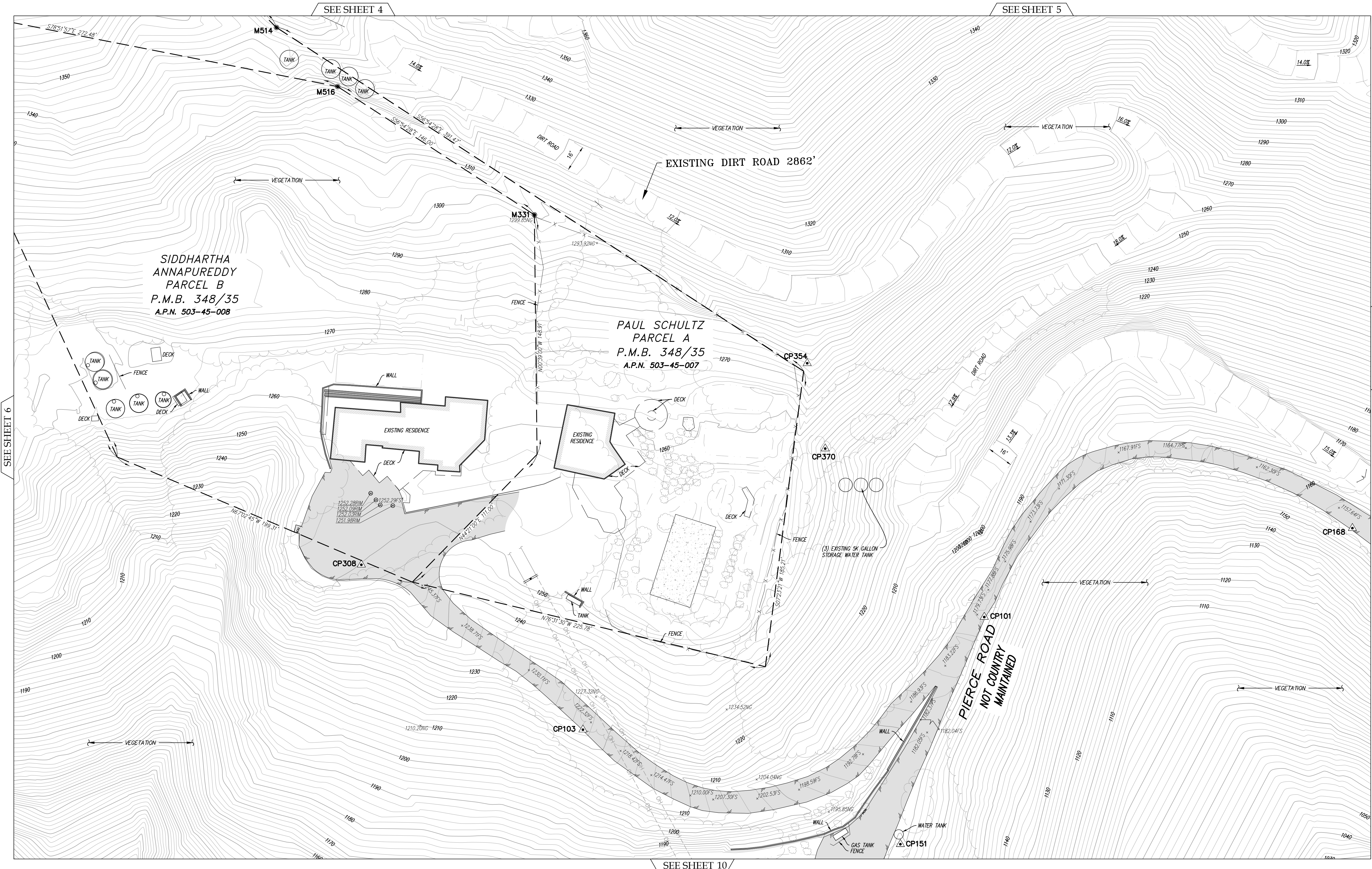
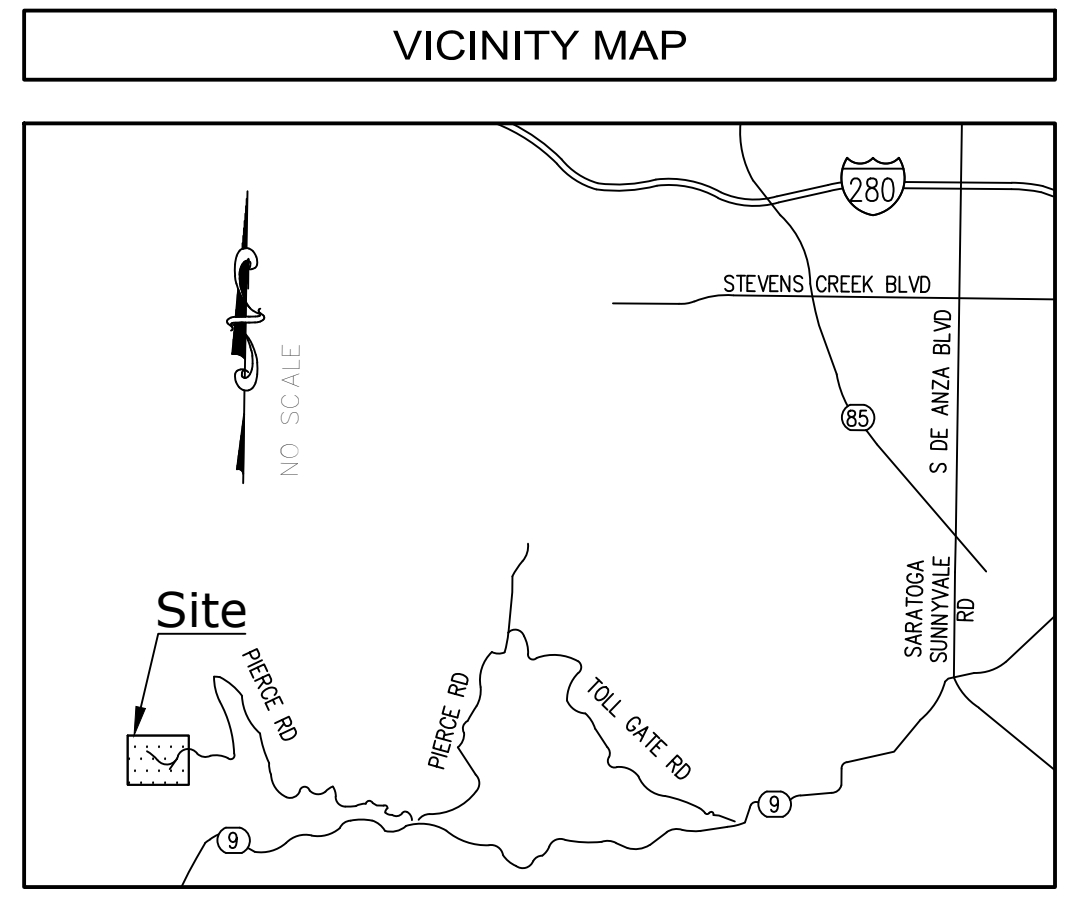
SURVEYOR OF RECORD FIELD COMPLETION DATE: JUNE 10, 2022

CALVADA SURVEYING, INC.
411 Jenks Cir., Suite 205, Corona, CA 92680
Phone: 951-280-9960 Fax: 951-280-9746
Toll Free: 800-CALVADA www.calvada.com
EST. 1989 JOB NO. 22435

Armando D. DuPont
Registration No. 7780

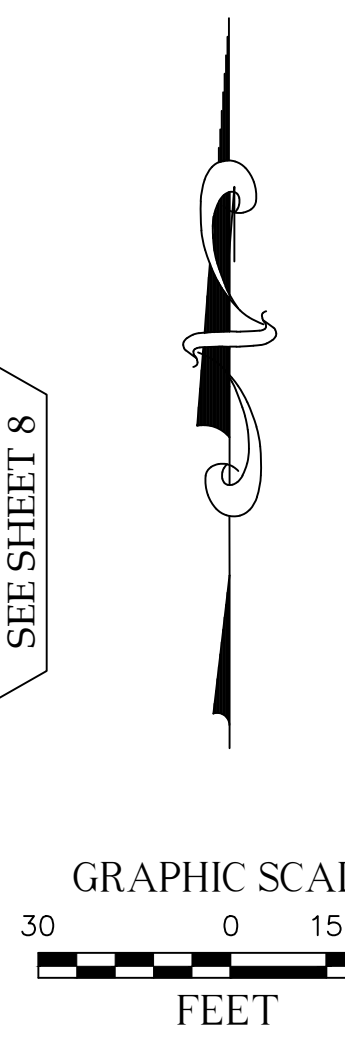
AERIAL - TOPOGRAPHIC SURVEY

APPROXIMATE ADDRESS: 14910 PIERCE ROAD, SARATOGA, CA 95070



LEGEND

[Symbol]	ASPHALT PAVEMENT
[Symbol]	CONCRETE PAVEMENT
[Symbol]	CONTROL POINT
[Symbol]	FIRE HYDRANT
[Symbol]	FOUND MONUMENT AS NOTED
[Symbol]	POWER POLE
[Symbol]	POWER POLE W/TRANSFORMER
[Symbol]	UNKNOWN MANHOLE
[Symbol]	ASSESSOR'S PARCEL NUMBER
[Symbol]	CENTERLINE
[Symbol]	DRAIN INLET
[Symbol]	FINISH SURFACE
[Symbol]	FLOW LINE
[Symbol]	NATURAL GROUND
[Symbol]	PROPERTY LINE
[Symbol]	TOP OF GRATE
[Symbol]	CHAIN LINK FENCE
[Symbol]	CONCRETE/RETAINING WALL
[Symbol]	EDGE OF PAVEMENT
[Symbol]	FLOW LINE
[Symbol]	INTERIOR LOT LINE
[Symbol]	OVERHANG
[Symbol]	OVERHEAD LINE
[Symbol]	RISE LINE
[Symbol]	TOP OF SLOPE



MONUMENT NOTES

MON.#	DESCRIPTION
M331	FD. 1.5" IRON PIPE OPEN DOWN 1.5' PER C.R. 2261
M514	FD. 3/4" IRON PIPE OPEN PER C.R. 2261
M516	FD. 1.5" IRON PIPE W/NAIP UP 0.1' PER C.R. 2261

CONTROL POINTS

CP#	NORTHING	EASTING	ELEVATION	DESCRIPTION
CP	.	.	.	SET
CP	.	.	.	SET
CP	.	.	.	SET
CP	.	.	.	SET
CP	.	.	.	SET
CP	.	.	.	SET
CP	.	.	.	SET
CP101	1918884.41'	6105002.75'	1179.90'	SET MAGNETIC NAIL & SHINER
CP103	1918814.39'	6104753.17'	1222.44'	SET MAGNETIC NAIL & SHINER
CP151	1918743.19'	6104950.58'	1179.10'	SET 60D NAIL
CP168	1918939.63'	6105231.69'	1157.08'	SET MAGNETIC NAIL & SHINER
CP308	1918916.90'	6104615.37'	1250.04'	SET MAGNETIC NAIL & SHINER
CP354	1919042.12'	6104892.65'	1273.84'	SET 60D NAIL W/WHISKER
CP370	1918989.10'	6104903.83'	1254.66'	SET 60D NAIL W/WHISKER
CP2089	1918896.70'	6105733.31'	1121.74'	SET 60D NAIL W/WHISKER

REVISIONS

NO.	DATE	REVISIONS	BY
0	08/01/22	SUBMITTAL	DM

UTILITY STATEMENT

BURIED UTILITIES AND/OR PIPELINES SHOWN HEREON ARE PER VISIBLE AND APPARENT SURFACE EVIDENCE, RECORD DRAWINGS OF THE CONSTRUCTED UTILITY LINES OBTAINED FROM RELIABLE AND RESPONSIBLE SOURCES NOT CONNECTED WITH CALVADA SURVEYING, INC. OR MARKINGS PROVIDED BY AN INDEPENDENT LOCATING CONTRACTOR. NO GUARANTEE OR WARRANTY, EITHER EXPRESSED OR IMPLIED, IS MADE AS TO THE ACCURACY OR THOROUGHNESS OF SUCH INFORMATION. IF MORE ACCURATE LOCATIONS OF UNDERGROUND UTILITIES OR PIPE LINES ARE REQUIRED, THE UTILITY OR PIPELINE WILL HAVE TO BE VERIFIED BY FIELD POT-HOLING. CALVADA SURVEYING, INC. AND THE SURVEYOR OF RECORD SHALL NOT BE HELD LIABLE FOR THE LOCATION OF OR THE FAILURE TO NOTE THE LOCATION OF NON-VISIBLE UTILITIES OR PIPELINES.

Underground Service Alert

Call: TOLL FREE 1-800-227-2600

TWO WORKING DAYS BEFORE YOU DIG

PREPARED FOR

ELEMENT HOMES
LOS ANGELES, CA 90039
PHONE: (650) 384-5234

BASIS OF BEARINGS

THE BEARINGS SHOWN HEREON ARE BASED UPON THE CALIFORNIA COORDINATE SYSTEM OF 1983, CCS83, ZONE III, (2022.75) IN ACCORDANCE TO THE CALIFORNIA PUBLIC RESOURCES CODE SECTIONS 8801-8819; SAID BEARINGS ARE DETERMINED LOCALLY UPON FIELD-OBSERVED TIES TO THE FOLLOWING LEICA SMARTNET NORTH AMERICA (S.N.A.) CONTINUOUSLY OPERATING REFERENCE STATIONS (C.O.R.S.):

S.N.A. CSJB:
NORTHING = 1941490.40' EASTING = 6166245.16'

S.N.A. CAGL:
NORTHING = 1830976.82' EASTING = 61251957.41'

BENCHMARK

ELEVATIONS SHOWN HEREON ARE BASED UPON CITY OF SARATOGA BENCHMARK RM-36, ELEVATION 502.08 FEET (NAVD 88).

DESCRIPTION: USC&GS P-388 AT SARATOGA, AT THE INTERSECTION OF STATE HIGHWAY 9 AND 4TH STREET, IN THE TOP OF THE SOUTHEAST AND OF A CONCRETE RETAINING WALL, 44.6 FEET NORTHWEST OF THE CENTERLINE OF THE HIGHWAY, 15.5 FEET NORTHEAST OF THE CENTERLINE OF THE STREET.

SITE INFORMATION

SITE NAME: SARATOGA AERIAL - TOPOGRAPHIC SURVEY
SITE ADDRESS: 14910 PIERCE ROAD, SARATOGA, CA 95070
ASSESSOR'S PARCEL NO.: 503-45-005

SURVEYOR OF RECORD

FIELD COMPLETION DATE: JUNE 10, 2022

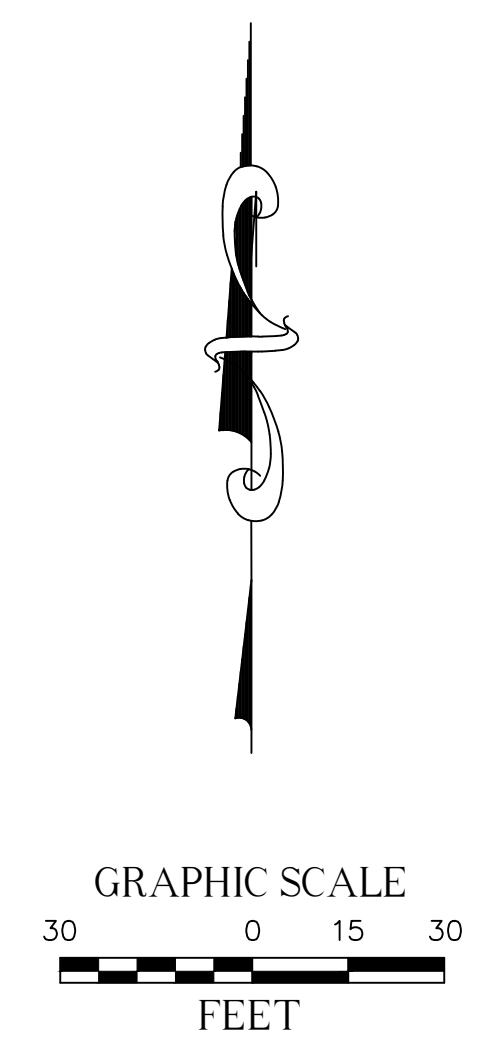
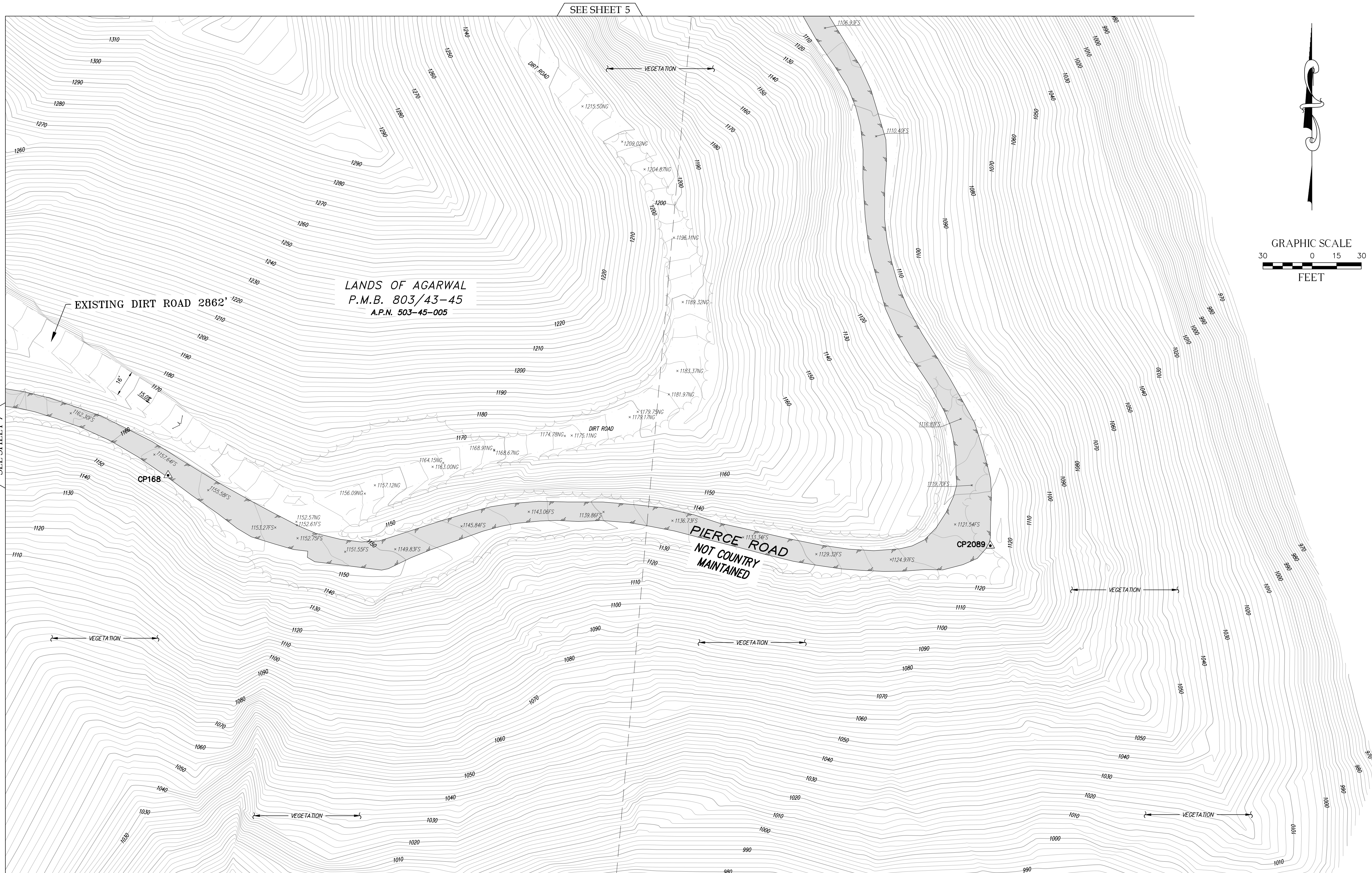
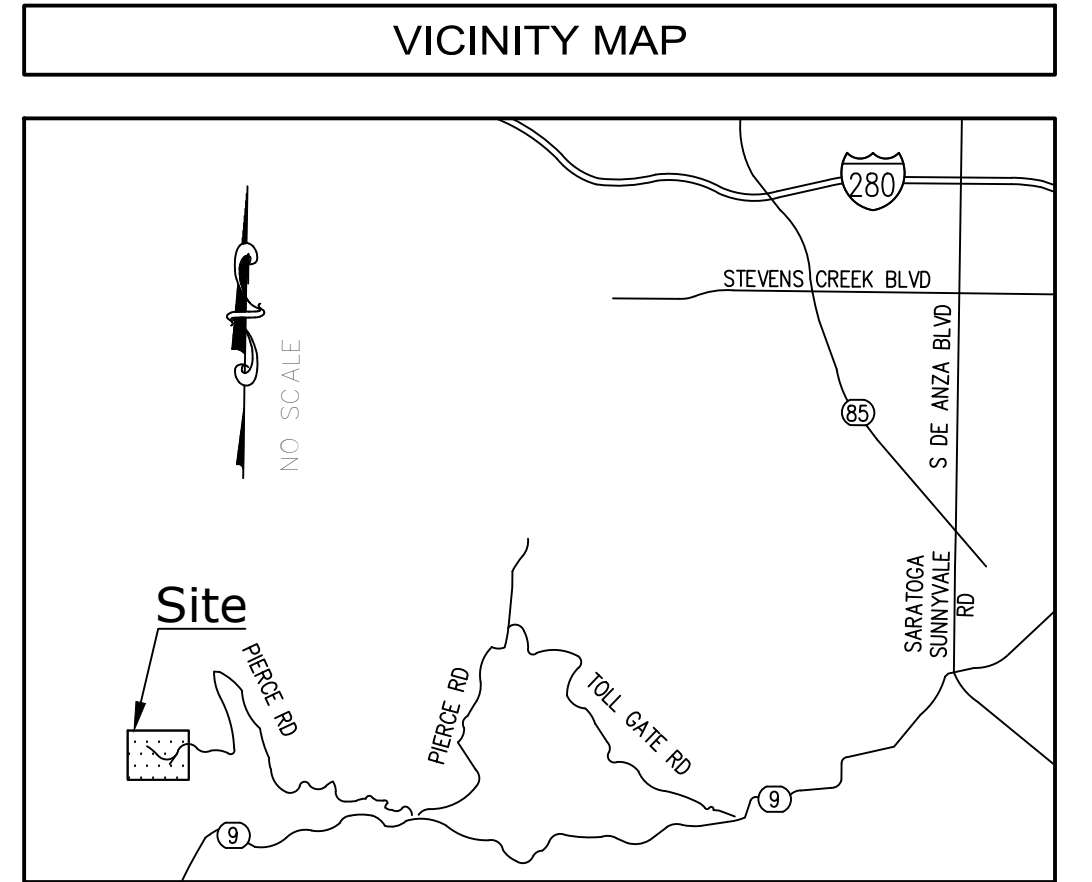
CALVADA SURVEYING, INC.

411 Jenks Cir., Suite 205, Corona, CA 92680
Phone: 951-280-9960 Fax: 951-280-9746
Toll Free: 800-CALVADA www.calvada.com
EST. 1989 JOB NO. 22435

Armando D. DuPont
Registration No. 7780

AERIAL - TOPOGRAPHIC SURVEY

APPROXIMATE ADDRESS: 14910 PIERCE ROAD, SARATOGA, CA 95070



LEGEND	
[Symbol]	ASPHALT PAVEMENT
[Symbol]	CONCRETE PAVEMENT
[Symbol]	CONTROL POINT
[Symbol]	FIRE HYDRANT
[Symbol]	FOUND MONUMENT AS NOTED
[Symbol]	POWER POLE
[Symbol]	POWER POLE W/TRANSFORMER
[Symbol]	UNKNOWN MANHOLE
[Symbol]	ASSESSOR'S PARCEL NUMBER
[Symbol]	CENTERLINE
[Symbol]	DRAIN INLET
[Symbol]	FINISH SURFACE
[Symbol]	FLOW LINE
[Symbol]	NATURAL GROUND
[Symbol]	PROPERTY LINE
[Symbol]	TOP OF GRATE
[Symbol]	CHAIN LINK FENCE
[Symbol]	CONCRETE/RETAINING WALL
[Symbol]	EDGE OF PAVEMENT
[Symbol]	FLOW LINE
[Symbol]	INTERIOR LOT LINE
[Symbol]	OVERHANG
[Symbol]	OVERHEAD LINE
[Symbol]	RIDGE LINE
[Symbol]	TOP OF SLOPE

MONUMENT NOTES	
MON.#	DESCRIPTION
M331	FD. 1.5" IRON PIPE OPEN DOWN 1.5' PER C.R. 2261
M514	FD. 3/4" IRON PIPE OPEN PER C.R. 2261
M516	FD. 1.5" IRON PIPE W/NAIL UP 0.1' PER C.R. 2261

CONTROL POINTS				
CP#	NORTHING	EASTING	ELEVATION	DESCRIPTION
CP	.	.	.	SET
CP	.	.	.	SET
CP	.	.	.	SET
CP	.	.	.	SET
CP	.	.	.	SET
CP	.	.	.	SET
CP	.	.	.	SET
CP101	1918884.41'	6105002.75'	1179.90'	SET MAGNETIC NAIL & SHINER
CP103	1918814.39'	6104753.17'	1222.44'	SET MAGNETIC NAIL & SHINER
CP151	1918743.19'	6104950.58'	1179.10'	SET 60D NAIL
CP168	1918939.63'	6105231.69'	1157.08'	SET MAGNETIC NAIL & SHINER
CP308	1918916.90'	6104615.37'	1250.04'	SET MAGNETIC NAIL & SHINER
CP354	1919042.12'	6104892.65'	1273.84'	SET 60D NAIL W/WHISKER
CP370	1918989.10'	6104903.83'	1254.66'	SET 60D NAIL W/WHISKER
CP2089	1918896.70'	6105733.31'	1121.74'	SET 60D NAIL W/WHISKER

REVISIONS			
NO.	DATE	REVISIONS	BY
0	08/01/22	SUBMITTAL	DM

UTILITY STATEMENT

BURIED UTILITIES AND/OR PIPELINES SHOWN HEREON ARE PER VISIBLE AND APPARENT SURFACE EVIDENCE, RECORD DRAWINGS OF THE CONSTRUCTED UTILITY LINES OBTAINED FROM RELIABLE AND RESPONSIBLE SOURCES NOT CONNECTED WITH CALVADA SURVEYING, INC. OR MARKINGS PROVIDED BY AN INDEPENDENT LOCATING CONTRACTOR. NO GUARANTEE OR WARRANTY, EITHER EXPRESSED OR IMPLIED, IS MADE AS TO THE ACCURACY OR THOROUGHNESS OF SUCH INFORMATION. IF MORE ACCURATE LOCATIONS OF UNDERGROUND UTILITIES OR PIPE LINES ARE REQUIRED, THE UTILITY OR PIPELINE WILL HAVE TO BE VERIFIED BY FIELD POT-HOLING. CALVADA SURVEYING, INC. AND THE SURVEYOR OF RECORD SHALL NOT BE HELD LIABLE FOR THE LOCATION OF OR THE FAILURE TO NOTE THE LOCATION OF NON-VISIBLE UTILITIES OR PIPELINES.

Underground Service Alert

Call: TOLL FREE 1-800-227-2600

TWO WORKING DAYS BEFORE YOU DIG

PREPARED FOR

ELEMENT HOMES
 LOS ANGELES, CA 90039
 PHONE: (650) 384-5234

BASIS OF BEARINGS

THE BEARINGS SHOWN HEREON ARE BASED UPON THE CALIFORNIA COORDINATE SYSTEM OF 1983, CCS83, ZONE III, (2022.75) IN ACCORDANCE TO THE CALIFORNIA PUBLIC RESOURCES CODE SECTIONS 8801-8819; SAID BEARINGS ARE DETERMINED LOCALLY UPON FIELD-OBSERVED TIES TO THE FOLLOWING LEICA SMARTNET NORTH AMERICA (S.N.A.) CONTINUOUSLY OPERATING REFERENCE STATIONS (C.O.R.S.):

S.N.A. CSJB:
 NORTHING = 1941490.40' EASTING = 6166245.16'

S.N.A. CAGL:
 NORTHING = 1830976.82' EASTING = 6251957.41'

BENCHMARK

ELEVATIONS SHOWN HEREON ARE BASED UPON CITY OF SARATOGA BENCHMARK RM-36, ELEVATION 502.08 FEET (NAVD 88).

DESCRIPTION: USCGS P-388 AT SARATOGA, AT THE INTERSECTION OF STATE HIGHWAY 9 AND 4TH STREET, IN THE TOP OF THE SOUTHEAST END OF A CONCRETE RETAINING WALL, 44.6 FEET NORTHWEST OF THE CENTERLINE OF THE HIGHWAY, 15.5 FEET NORTHEAST OF THE CENTERLINE OF THE STREET.

SITE INFORMATION

SITE NAME: SARATOGA AERIAL - TOPOGRAPHIC SURVEY
 SITE ADDRESS: 14910 PIERCE ROAD, SARATOGA, CA 95070
 ASSESSOR'S PARCEL NO.: 503-45-005

SURVEYOR OF RECORD FIELD COMPLETION DATE: JUNE 10, 2022

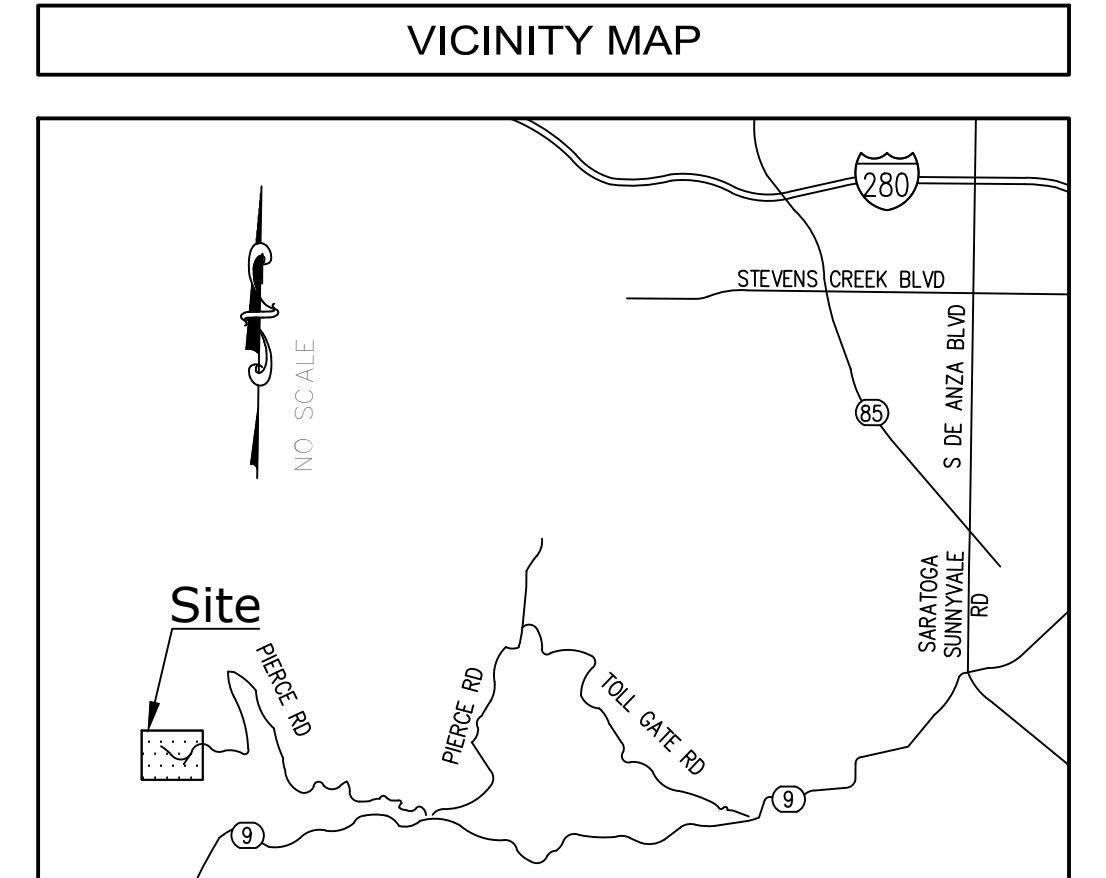
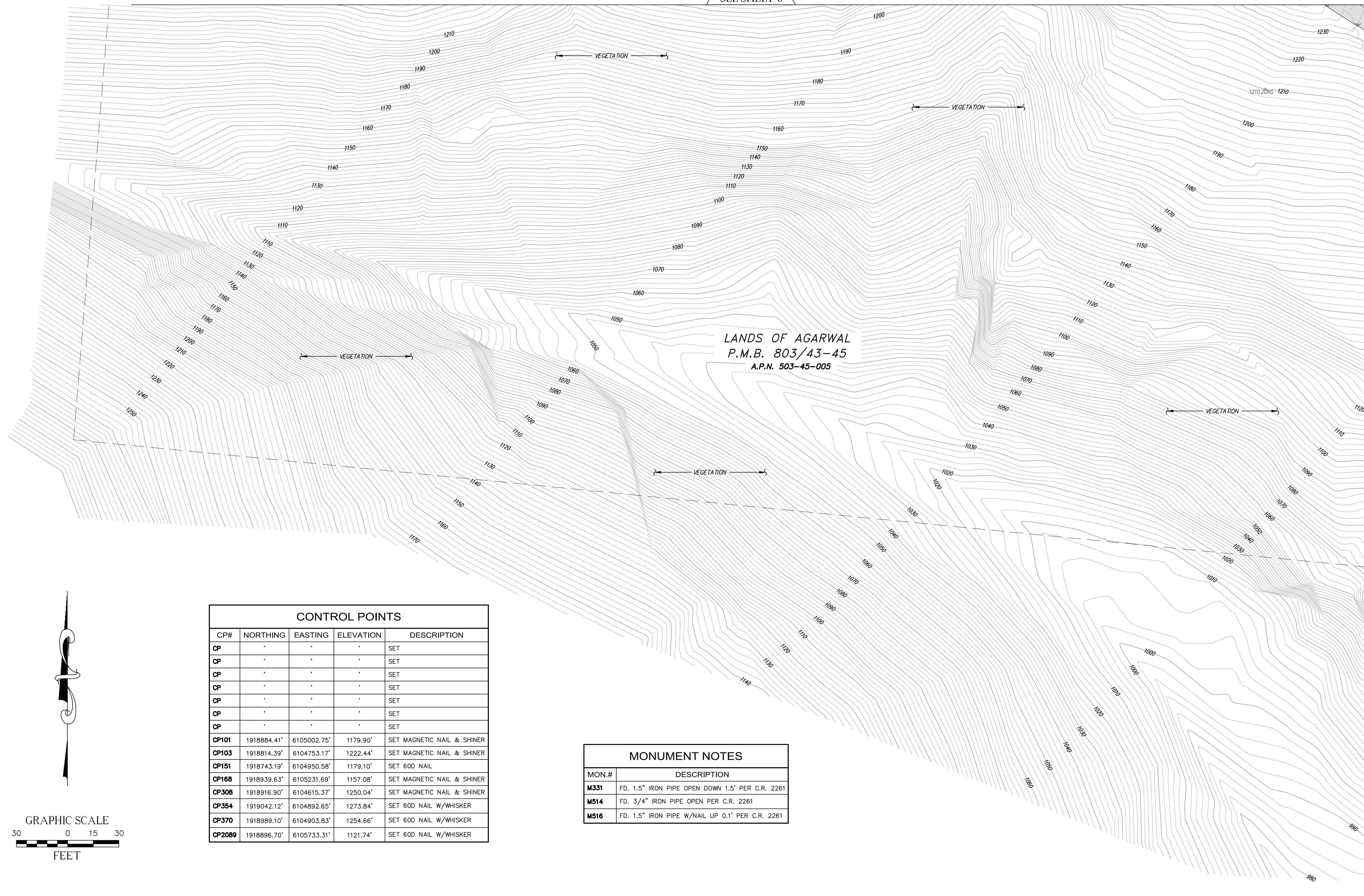
CALVADA SURVEYING, INC.
 411 Jenks Cir., Suite 205, Corona, CA 92880
 Phone: 951-280-9960 Fax: 951-280-9746
 Toll Free: 800-CALVADA www.calvada.com
 EST. 1989 JOB NO. 22435

Armando D. DuPont
 Registration No. 7780

AERIAL - TOPOGRAPHIC SURVEY

APPROXIMATE ADDRESS: 14910 PIERCE ROAD, SARATOGA, CA 95070

SEE SHEET 6



LEGEND	
	ASPHALT PAVEMENT
	CONCRETE PAVEMENT
	CONTROL POINT
	FIRE HYDRANT
	FOUND MONUMENT AS NOTED
	POWER POLE
	POWER POLE W/TRANSFORMER
	UNKNOWN MANHOLE
	ASSESSOR'S PARCEL NUMBER
	CENTERLINE
	DRAIN INLET
	FINISH SURFACE
	FLOW LINE
	NATURAL GROUND
	PROPERTY LINE
	TOP OF GRATE
	CHAIN LINK FENCE
	CONCRETE/RETAINING WALL
	EDGE OF PAVEMENT
	FLOW LINE
	INTERIOR LOT LINE
	OVERHANG
	OVERHEAD LINE
	RIDGE LINE
	TOP OF SLOPE

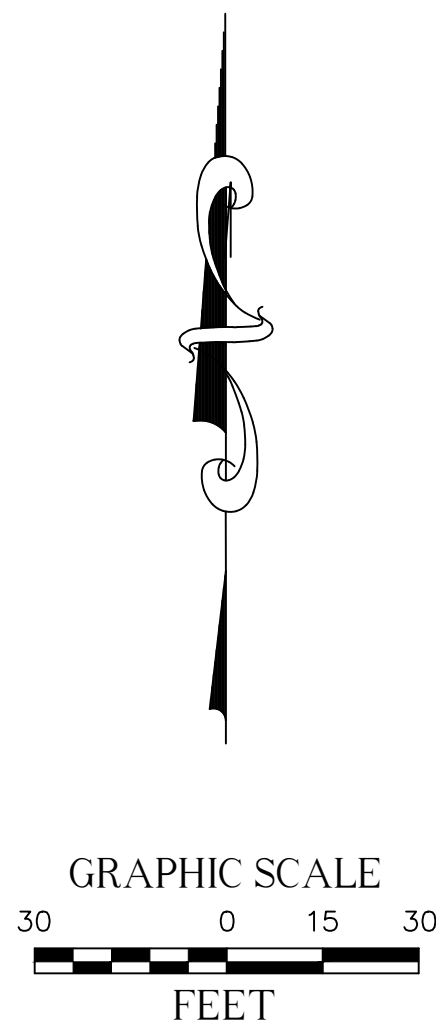
SEE SHEET 10

CONTROL POINTS

CP#	NORTHING	EASTING	ELEVATION	DESCRIPTION
CP	.	.	.	SET
CP	.	.	.	SET
CP	.	.	.	SET
CP	.	.	.	SET
CP	.	.	.	SET
CP	.	.	.	SET
CP	.	.	.	SET
CP101	1918884.41'	6105002.75'	1179.90'	SET MAGNETIC NAIL & SHINER
CP103	1918814.39'	6104753.17'	1222.44'	SET MAGNETIC NAIL & SHINER
CP151	1918743.19'	6104950.58'	1179.10'	SET 60D NAIL
CP168	1918939.63'	6105231.69'	1157.08'	SET MAGNETIC NAIL & SHINER
CP308	1918916.90'	6104615.37'	1250.04'	SET MAGNETIC NAIL & SHINER
CP354	1919042.12'	6104892.65'	1273.84'	SET 60D NAIL W/WHISKER
CP370	1918989.110'	6104903.83'	1254.66'	SET 60D NAIL W/WHISKER
CP2089	1918896.70'	6105733.31'	1121.74'	SET 60D NAIL W/WHISKER

MONUMENT NOTES

MON.#	DESCRIPTION
M331	FD. 1.5" IRON PIPE OPEN DOWN 1.5' PER C.R. 2261
M514	FD. 3/4" IRON PIPE OPEN PER C.R. 2261
M516	FD. 1.5" IRON PIPE W/NAIL UP 0.1' PER C.R. 2261



REVISIONS			
NO.	DATE	REVISIONS	BY
0	08/01/22	SUBMITTAL	DM

UTILITY STATEMENT

BURIED UTILITIES AND/OR PIPELINES SHOWN HEREON ARE PER VISIBLE AND APPARENT SURFACE EVIDENCE, RECORD DRAWINGS OF THE CONSTRUCTED UTILITY LINES OBTAINED FROM RELIABLE AND RESPONSIBLE SOURCES NOT CONNECTED WITH CALVADA SURVEYING, INC. OR MARKINGS PROVIDED BY AN INDEPENDENT LOCATING CONTRACTOR. NO GUARANTEE OR WARRANTY, EITHER EXPRESSED OR IMPLIED, IS MADE AS TO THE ACCURACY OR THOROUGHNESS OF SUCH INFORMATION. IF MORE ACCURATE LOCATIONS OF UNDERGROUND UTILITIES OR PIPE LINES ARE REQUIRED, THE UTILITY OR PIPELINE WILL HAVE TO BE VERIFIED BY FIELD POT-HOLING. CALVADA SURVEYING, INC. AND THE SURVEYOR OF RECORD SHALL NOT BE HELD LIABLE FOR THE LOCATION OF OR THE FAILURE TO NOTE THE LOCATION OF NON-VISIBLE UTILITIES OR PIPELINES.

Underground Service Alert

Call: TOLL FREE 1-800-227-2600

TWO WORKING DAYS BEFORE YOU DIG

PREPARED FOR

ELEMENT HOMES
LOS ANGELES, CA 90039
PHONE: (650) 384-5234

BASIS OF BEARINGS

THE BEARINGS SHOWN HEREON ARE BASED UPON THE CALIFORNIA COORDINATE SYSTEM OF 1983, CCS83, ZONE III, (2022.75) IN ACCORDANCE TO THE CALIFORNIA PUBLIC RESOURCES CODE SECTIONS 8801-8819; SAID BEARINGS ARE DETERMINED LOCALLY UPON FIELD-OBSERVED TIES TO THE FOLLOWING LEICA SMARTNET NORTH AMERICA (S.N.N.A.) CONTINUOUSLY OPERATING REFERENCE STATIONS (C.O.R.S.):

S.N.N.A. CSJB:
NORTHING = 1941490.40' EASTING = 6166245.16'

S.N.N.A. CAGL:
NORTHING = 1830976.82' EASTING = 6251957.41'

BENCHMARK

ELEVATIONS SHOWN HEREON ARE BASED UPON CITY OF SARATOGA BENCHMARK RM-36, ELEVATION 502.08 FEET (NAVD 88).

DESCRIPTION: USC&GS P-388 AT SARATOGA, AT THE INTERSECTION OF STATE HIGHWAY 9 AND 4TH STREET, IN THE TOP OF THE SOUTHEAST AND OF A CONCRETE RETAINING WALL, 44.6 FEET NORTHWEST OF THE CENTERLINE OF THE HIGHWAY, 15.5 FEET NORTHEAST OF THE CENTERLINE OF THE STREET.

SITE INFORMATION

SITE NAME: SARATOGA AERIAL - TOPOGRAPHIC SURVEY
SITE ADDRESS: 14910 PIERCE ROAD, SARATOGA, CA 95070
SANTA CLARA COUNTY

ASSESSOR'S PARCEL NO.: 503-45-005

SURVEYOR OF RECORD

FIELD COMPLETION DATE: JUNE 10, 2022

CALVADA SURVEYING, INC.

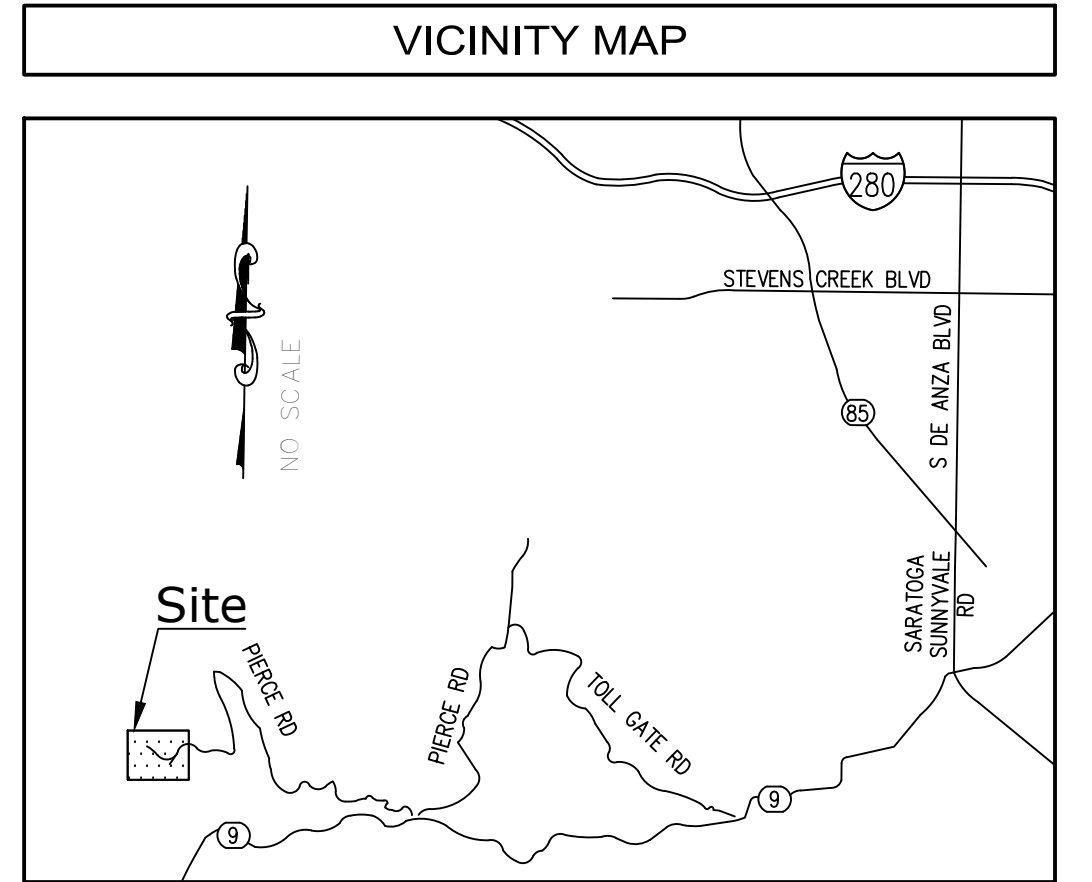
411 Jenks Cir., Suite 205, Corona, CA 92880
Phone: 951-280-9960 Fax: 951-280-9746
Toll Free: 800-CALVADA www.calvada.com

EST. 1989 JOB NO. 22435

Armando D. DuFont
Registration No. 7780

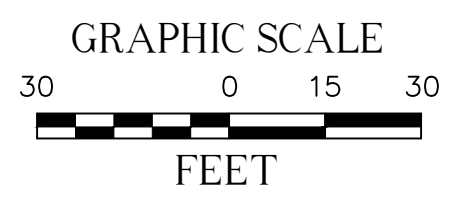
AERIAL - TOPOGRAPHIC SURVEY

APPROXIMATE ADDRESS: 14910 PIERCE ROAD, SARATOGA, CA 95070



LEGEND

[Symbol]	ASPHALT PAVEMENT
[Symbol]	CONCRETE PAVEMENT
[Symbol]	CONTROL POINT
[Symbol]	FIRE HYDRANT
[Symbol]	FOUND MONUMENT AS NOTED
[Symbol]	POWER POLE
[Symbol]	POWER POLE W/TRANSFORMER
[Symbol]	UNKNOWN MANHOLE
[Symbol]	ASSESSOR'S PARCEL NUMBER
[Symbol]	CENTERLINE
[Symbol]	DRAIN INLET
[Symbol]	FINISH SURFACE
[Symbol]	FLOW LINE
[Symbol]	NATURAL GROUND
[Symbol]	PROPERTY LINE
[Symbol]	TOP OF GATE
[Symbol]	CHAIN LINK FENCE
[Symbol]	CONCRETE/RETAINING WALL
[Symbol]	EDGE OF PAVEMENT
[Symbol]	FLOW LINE
[Symbol]	INTERIOR LOT LINE
[Symbol]	OVERHANG
[Symbol]	OVERHEAD LINE
[Symbol]	RODGE LINE
[Symbol]	TOP OF SLOPE



MONUMENT NOTES

MON.#	DESCRIPTION
M331	FD. 1.5" IRON PIPE OPEN DOWN 1.5' PER C.R. 2261
M514	FD. 3/4" IRON PIPE OPEN PER C.R. 2261
M516	FD. 1.5" IRON PIPE W/NAIL UP 0.1' PER C.R. 2261

CONTROL POINTS

CP#	NORTHING	EASTING	ELEVATION	DESCRIPTION
CP	.	.	.	SET
CP	.	.	.	SET
CP	.	.	.	SET
CP	.	.	.	SET
CP	.	.	.	SET
CP	.	.	.	SET
CP	.	.	.	SET
CP101	1918884.41'	6105002.75'	1179.90'	SET MAGNETIC NAIL & SHINER
CP103	1918814.39'	6104753.17'	1222.44'	SET MAGNETIC NAIL & SHINER
CP151	1918743.19'	6104950.58'	1179.10'	SET 60D NAIL
CP168	1918939.63'	6105231.69'	1157.08'	SET MAGNETIC NAIL & SHINER
CP308	1918916.90'	6104615.37'	1250.04'	SET MAGNETIC NAIL & SHINER
CP354	1919042.12'	6104892.65'	1273.84'	SET 60D NAIL W/WHISKER
CP370	1918989.10'	6104903.83'	1254.66'	SET 60D NAIL W/WHISKER
CP2089	1918896.70'	6105733.31'	1121.74'	SET 60D NAIL W/WHISKER

REVISIONS

NO.	DATE	REVISIONS	BY
0	08/01/22	SUBMITTAL	DM

UTILITY STATEMENT

BURIED UTILITIES AND/OR PIPELINES SHOWN HEREON ARE PER VISIBLE AND APPARENT SURFACE EVIDENCE, RECORDED DRAWINGS OF THE CONSTRUCTED UTILITY LINES OBTAINED FROM RELIABLE AND RESPONSIBLE SOURCES NOT PROVIDED BY AN INDEPENDENT LOCATING CONTRACTOR. NO GUARANTEE OR WARRANTY, EITHER EXPRESSED OR IMPLIED, IS MADE AS TO THE ACCURACY OR THOROUGHNESS OF SUCH INFORMATION. IF MORE ACCURATE LOCATIONS OF UNDERGROUND UTILITIES OR PIPE LINES ARE REQUIRED, THE UTILITY OR PIPELINE WILL HAVE TO BE VERIFIED BY FIELD POT-HOLING. CALVADA SURVEYING, INC. AND THE SURVEYOR OF RECORD SHALL NOT BE HELD LIABLE FOR THE LOCATION OF OR THE FAILURE TO NOTE THE LOCATION OF NON-VISIBLE UTILITIES OR PIPELINES.

Underground Service Alert
Call: TOLL FREE 1-800-227-2600
TWO WORKING DAYS BEFORE YOU DIG

PREPARED FOR

ELEMENT HOMES
LOS ANGELES, CA 90039
PHONE: (650) 384-5234

BASIS OF BEARINGS

THE BEARINGS SHOWN HEREON ARE BASED UPON THE CALIFORNIA COORDINATE SYSTEM OF 1983, CCS83, ZONE III, (2022.75) IN ACCORDANCE TO THE CALIFORNIA PUBLIC RESOURCES CODE SECTIONS 8801-8819; SAID BEARINGS ARE DETERMINED LOCALLY UPON FIELD-OBSERVED TIES TO THE FOLLOWING LEICA SMARTNET NORTH AMERICA (S.N.N.A.) CONTINUOUSLY OPERATING REFERENCE STATIONS (C.O.R.S.):

S.N.N.A. CSJB:
NORTHING = 1941490.40' EASTING = 6166245.16'

S.N.N.A. CAGL:
NORTHING = 1830976.82' EASTING = 6251957.41'

BENCHMARK

ELEVATIONS SHOWN HEREON ARE BASED UPON CITY OF SARATOGA BENCHMARK RM-36, ELEVATION 502.08 FEET (NAVD 88).

DESCRIPTION: USC&GS P-388 AT SARATOGA, AT THE INTERSECTION OF STATE HIGHWAY 9 AND 4TH STREET, IN THE TOP OF THE SOUTHWEST AND OF A CONCRETE RETAINING WALL, 44.6 FEET NORTHWEST OF THE CENTERLINE OF THE HIGHWAY, 15.5 FEET NORTHEAST OF THE CENTERLINE OF THE STREET.

SITE INFORMATION

SITE NAME: SARATOGA AERIAL - TOPOGRAPHIC SURVEY
SITE ADDRESS: 14910 PIERCE ROAD, SARATOGA, CA 95070
SANTA CLARA COUNTY
ASSESSOR'S PARCEL NO.: 503-45-005

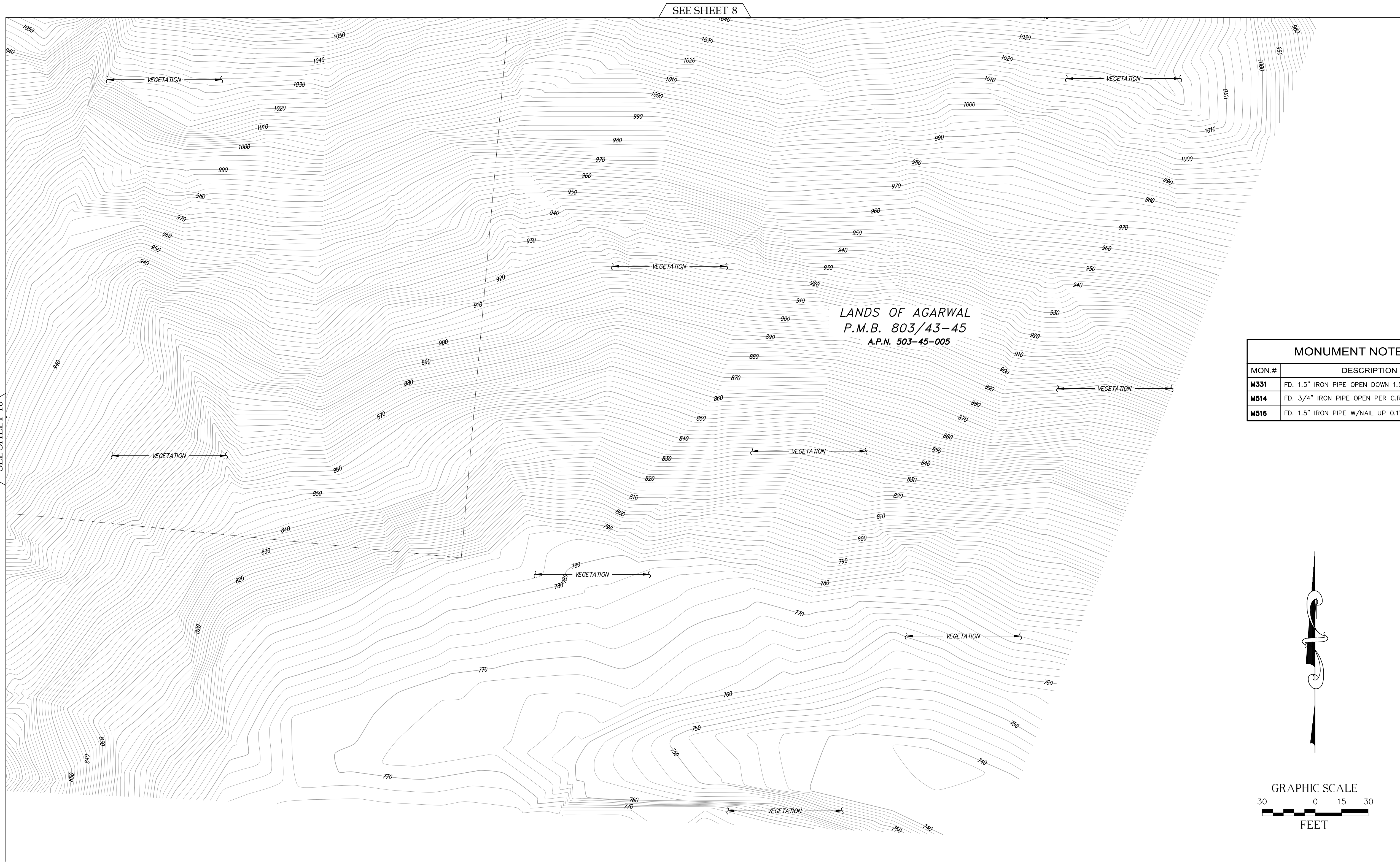
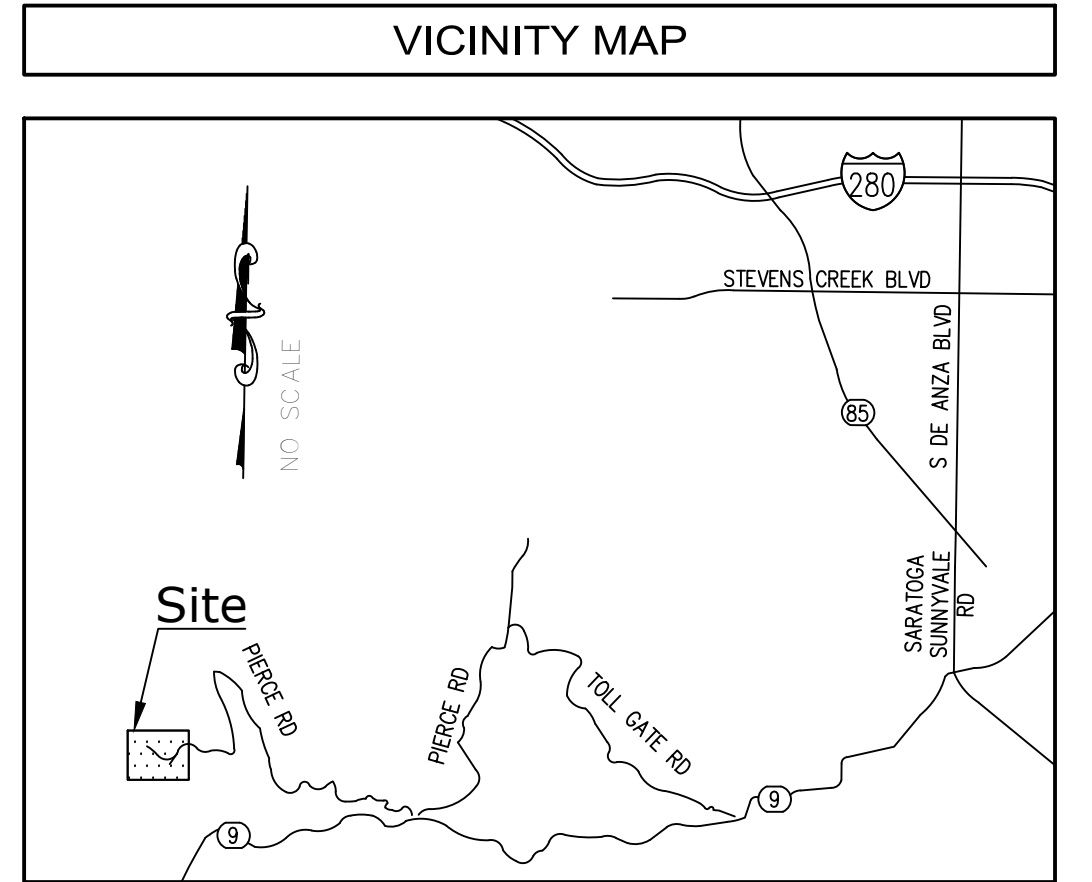
SURVEYOR OF RECORD FIELD COMPLETION DATE: JUNE 10, 2022

CALVADA SURVEYING, INC.
411 Jenks Cir., Suite 205, Corona, CA 92880
Phone: 951-280-9960 Fax: 951-280-9746
Toll Free: 800-CALVADA www.calvada.com
EST. 1989 JOB NO. 22435

Armando D. DuPont
Registration No. 7780

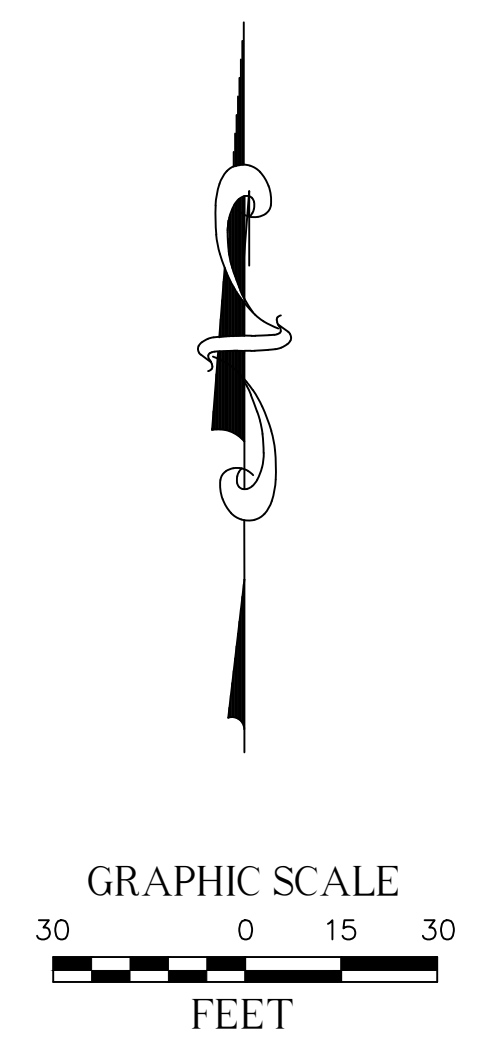
AERIAL - TOPOGRAPHIC SURVEY

APPROXIMATE ADDRESS: 14910 PIERCE ROAD, SARATOGA, CA 95070



MON.#	DESCRIPTION
M331	FD. 1.5" IRON PIPE OPEN DOWN 1.5" PER C.R. 2261
M514	FD. 3/4" IRON PIPE OPEN PER C.R. 2261
M516	FD. 1.5" IRON PIPE W/NAIL UP 0.1" PER C.R. 2261

LEGEND	
	ASPHALT PAVEMENT
	CONCRETE PAVEMENT
	CONTROL POINT
	FIRE HYDRANT
	FOUND MONUMENT AS NOTED
	POWER POLE
	POWER POLE W/TRANSFORMER
	UNKNOWN MANHOLE
	ASSESSOR'S PARCEL NUMBER
	CENTERLINE
	DRAIN INLET
	FINISH SURFACE
	FLOW LINE
	NATURAL GROUND
	PROPERTY LINE
	TOP OF GATE
	CHAIN LINK FENCE
	CONCRETE/RETAINING WALL
	EDGE OF PAVEMENT
	FLOW LINE
	INTERIOR LOT LINE
	OVERHANG
	OVERHEAD LINE
	RIIDGE LINE
	TOP OF SLOPE



CONTROL POINTS				
CP#	NORTHING	EASTING	ELEVATION	DESCRIPTION
CP	.	.	.	SET
CP	.	.	.	SET
CP	.	.	.	SET
CP	.	.	.	SET
CP	.	.	.	SET
CP	.	.	.	SET
CP101	1918884.41'	6105002.75'	1179.90'	SET MAGNETIC NAIL & SHINER
CP103	1918814.39'	6104753.17'	1222.44'	SET MAGNETIC NAIL & SHINER
CP151	1918743.19'	6104950.58'	1179.10'	SET 60D NAIL
CP168	1918939.63'	6105231.69'	1157.08'	SET MAGNETIC NAIL & SHINER
CP308	1918916.90'	6104615.37'	1250.04'	SET MAGNETIC NAIL & SHINER
CP354	1919042.12'	6104892.65'	1273.84'	SET 60D NAIL W/WHISKER
CP370	1918989.10'	6104903.83'	1254.66'	SET 60D NAIL W/WHISKER
CP2089	1918896.70'	6105733.31'	1121.74'	SET 60D NAIL W/WHISKER

REVISIONS			
NO.	DATE	REVISIONS	BY
0	08/01/22	SUBMITTAL	DM

UTILITY STATEMENT

BURIED UTILITIES AND/OR PIPELINES SHOWN HEREON ARE PER VISIBLE AND APPARENT SURFACE EVIDENCE, RECORD DRAWINGS OF THE CONSTRUCTED UTILITY LINES OBTAINED FROM RELIABLE AND RESPONSIBLE SOURCES NOT CONNECTED WITH CALVADA SURVEYING, INC. OR MARKINGS PROVIDED BY AN INDEPENDENT LOCATING CONTRACTOR. NO GUARANTEE OR WARRANTY, EITHER EXPRESSED OR IMPLIED, IS MADE AS TO THE ACCURACY OR THOROUGHNESS OF SUCH INFORMATION. IF MORE ACCURATE LOCATIONS OF UNDERGROUND UTILITIES OR PIPE LINES ARE REQUIRED, THE UTILITY OR PIPELINE WILL HAVE TO BE VERIFIED BY FIELD POT-HOLING. CALVADA SURVEYING, INC. AND THE SURVEYOR OF RECORD SHALL NOT BE HELD LIABLE FOR THE LOCATION OF OR THE FAILURE TO NOTE THE LOCATION OF NON-VISIBLE UTILITIES OR PIPELINES.

Underground Service Alert

Call: TOLL FREE 1-800-227-2600

TWO WORKING DAYS BEFORE YOU DIG

PREPARED FOR

ELEMENT HOMES
LOS ANGELES, CA 90039
PHONE: (650) 384-5234

BASIS OF BEARINGS

THE BEARINGS SHOWN HEREON ARE BASED UPON THE CALIFORNIA COORDINATE SYSTEM OF 1983, CCS83, ZONE III, (2022.75) IN ACCORDANCE TO THE CALIFORNIA PUBLIC RESOURCES CODE SECTIONS 8801-8819; SAID BEARINGS ARE DETERMINED LOCALLY UPON FIELD-OBSERVED TIES TO THE FOLLOWING LEICA SMARTNET NORTH AMERICA (S.N.N.A.) CONTINUOUSLY OPERATING REFERENCE STATIONS (C.O.R.S.):

S.N.N.A. CSJB:
NORTHING = 1941490.40' EASTING = 6166245.16'

S.N.N.A. CAGL:
NORTHING = 1830976.82' EASTING = 6251957.41'

BENCHMARK

ELEVATIONS SHOWN HEREON ARE BASED UPON CITY OF SARATOGA BENCHMARK RM-36, ELEVATION 502.08 FEET (NAVD 88).

DESCRIPTION: USC&GS P-388 AT SARATOGA, AT THE INTERSECTION OF STATE HIGHWAY 9 AND 4TH STREET, IN THE TOP OF THE SOUTHWEST AND OF A CONCRETE RETAINING WALL, 44.6 FEET NORTHWEST OF THE CENTERLINE OF THE HIGHWAY, 15.5 FEET NORTHEAST OF THE CENTERLINE OF THE STREET.

SITE INFORMATION

SITE NAME: SARATOGA AERIAL - TOPOGRAPHIC SURVEY
SITE ADDRESS: 14910 PIERCE ROAD, SARATOGA, CA 95070
SANTA CLARA COUNTY

ASSESSOR'S PARCEL NO.: 503-45-005

SURVEYOR OF RECORD

FIELD COMPLETION DATE: JUNE 10, 2022

CALVADA SURVEYING, INC.

411 Jenks Cir., Suite 205, Corona, CA 92680
Phone: 951-280-9960 Fax: 951-280-9746
Toll Free: 800-CALVADA www.calvada.com

EST. 1989 JOB NO. 22435

Armando D. DuPont
Registration No. 7780