

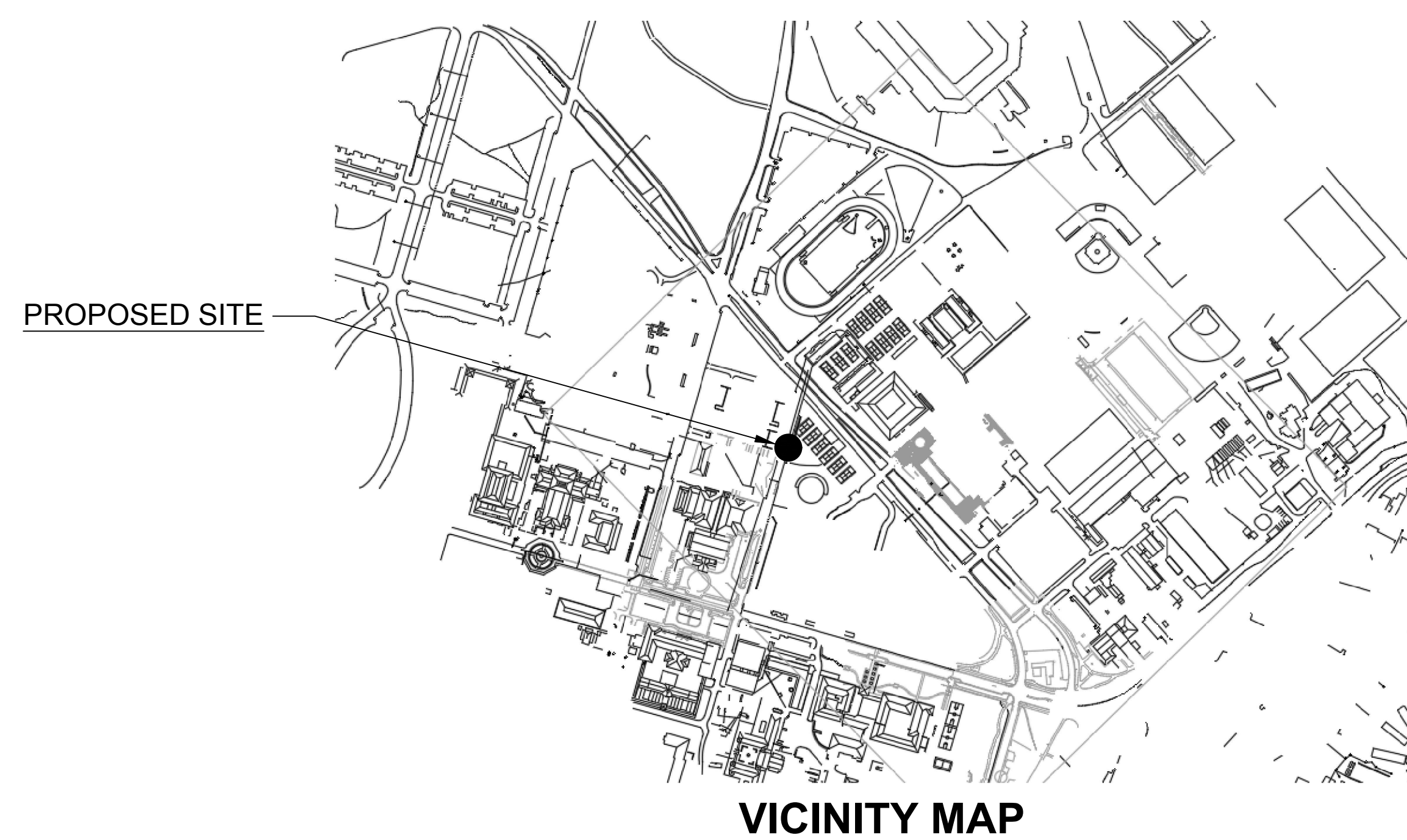
STANFORD UNIVERSITY EAST CAMPUS TENNIS SURGE TRAILERS

ASX SUBMITTAL SET

PROJECT 5698

DRAWING STATUS: ASX SUBMITTAL
 SUBMITTAL DATE: 12/20/2023
 APPROVAL DATE:
 ASX COMPLIANCE RE-SUBMITTAL
 PERMIT APPLICATION
 CONSTRUCTION PERMIT
 RECORD DRAWINGS

(08-026T), AND (08-027T), 638 CAMPUS DRIVE



VICINITY MAP

DRAWING INDEX

- PL0.0 TITLE SHEET
- PL1.2 GUP INFORMATION MAP
- C-1.0 COUNTY COVER SHEET
- C-1.1 CONSTRUCTION NOTES
- C-2.0 TOPOGRAPHIC SURVEY
- C-3.0 DEMOLITION PLAN
- C-4.0 GRADING AND DRAINAGE PLAN
- C-5.0 UTILITY PLAN
- C-6.0 STORMWATER MANAGEMENT PLAN
- C-7.0 CONSTRUCTION SITE LOGISTICS AND SAFETY PLAN
- C-8.0 FIRE ACCESS PLAN
- C-9.0 ELEVATION, FLOOR, AND FOUNDATION PLAN

SITE DATA INFORMATION

GENERAL

APN: 142-04-036
 PARCEL SIZE: 580.15 AC
 DEVELOPMENT DISTRICT: CAMPUS CENTER
 BUILDING/QUAD: 08-026T & 08-027T
 LAND USE DESIGNATION: ACADEMIC CAMPUS
 SITE AREA: 626 SF
 TEMPORARY GUP: 480 SF

PERCENTAGE OF SITE AREA:

LANDSCAPE: 0%
 HARDSCAPE: 100 %

NUMBER OF NET
 NEW PARKING SPACES: NONE

ESTIMATED CUT AND FILL:
 CUT: 0 CUBIC YARDS
 FILL: 0 CUBIC YARDS
 NET: 0 CUBIC YARDS

PROJECT DESCRIPTION:

INSTALLATION OF TWO TEMPORARY SURGE TRAILERS AND ASSOCIATED UTILITIES FOR THE VARSITY TENNIS PROGRAM. THE TRAILERS WILL PROVIDE MEN'S AND WOMEN'S LOCKER ROOMS DURING THE PERIOD OF CONSTRUCTION OF THE VARSITY TENNIS CENTER (PLN23-036), FROM EXPECTED CONSTRUCTION START IN JUNE 2024 UNTIL EXPECTED OCCUPANCY AND MOVE IN JANUARY 2026.

PROJECT MANAGER:
 Mark Bonino
 340 Bonair Siding Rd
 Stanford, CA 94305
 mbonino@stanford.edu

REVISION

DEPARTMENT OF PROJECT MANAGEMENT
 340 Bonair Siding Rd
 Stanford, CA 94305
 TELEPHONE (650) 723-0022 FAX (650) 723-7444

TITLE SHEET

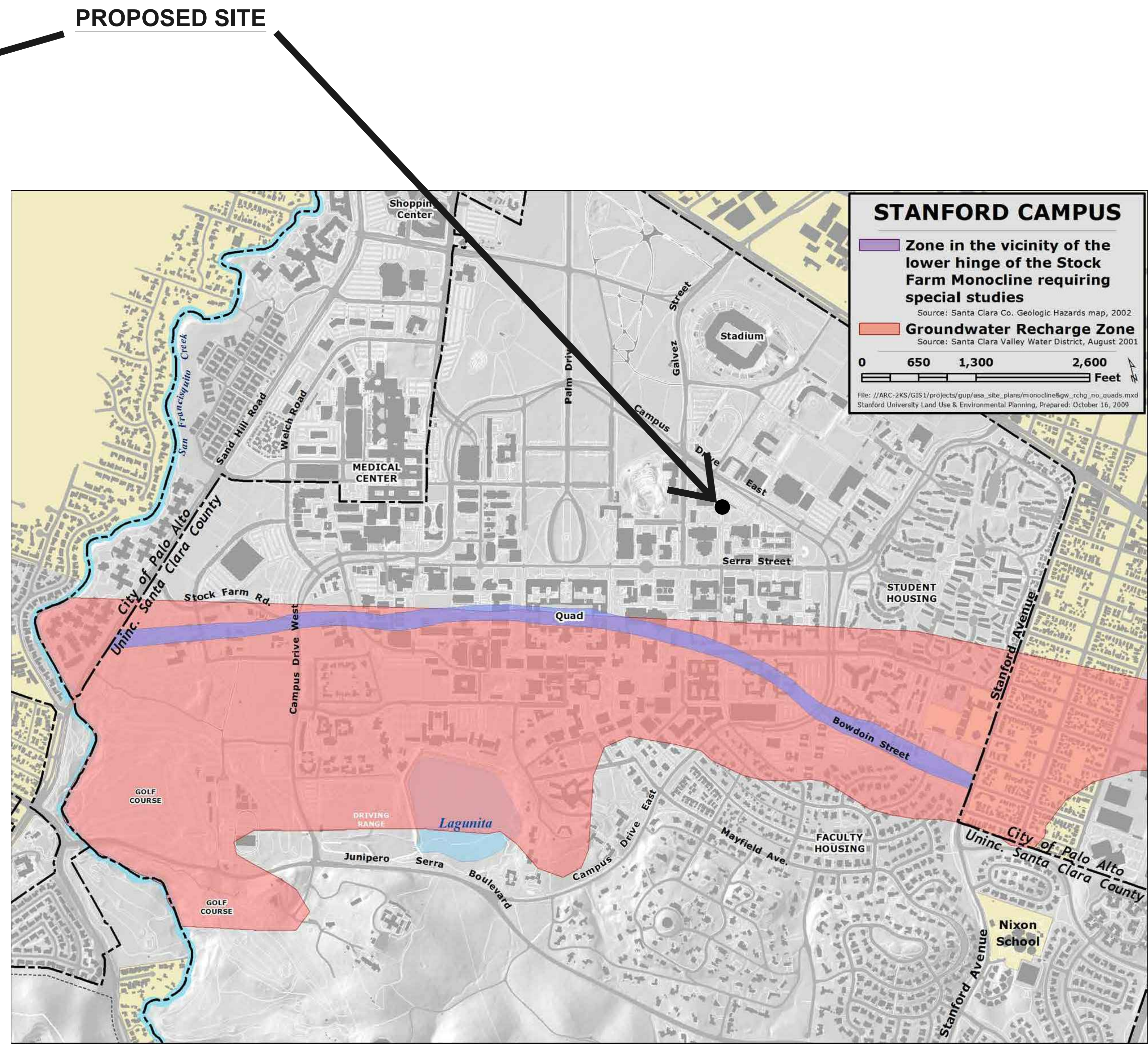
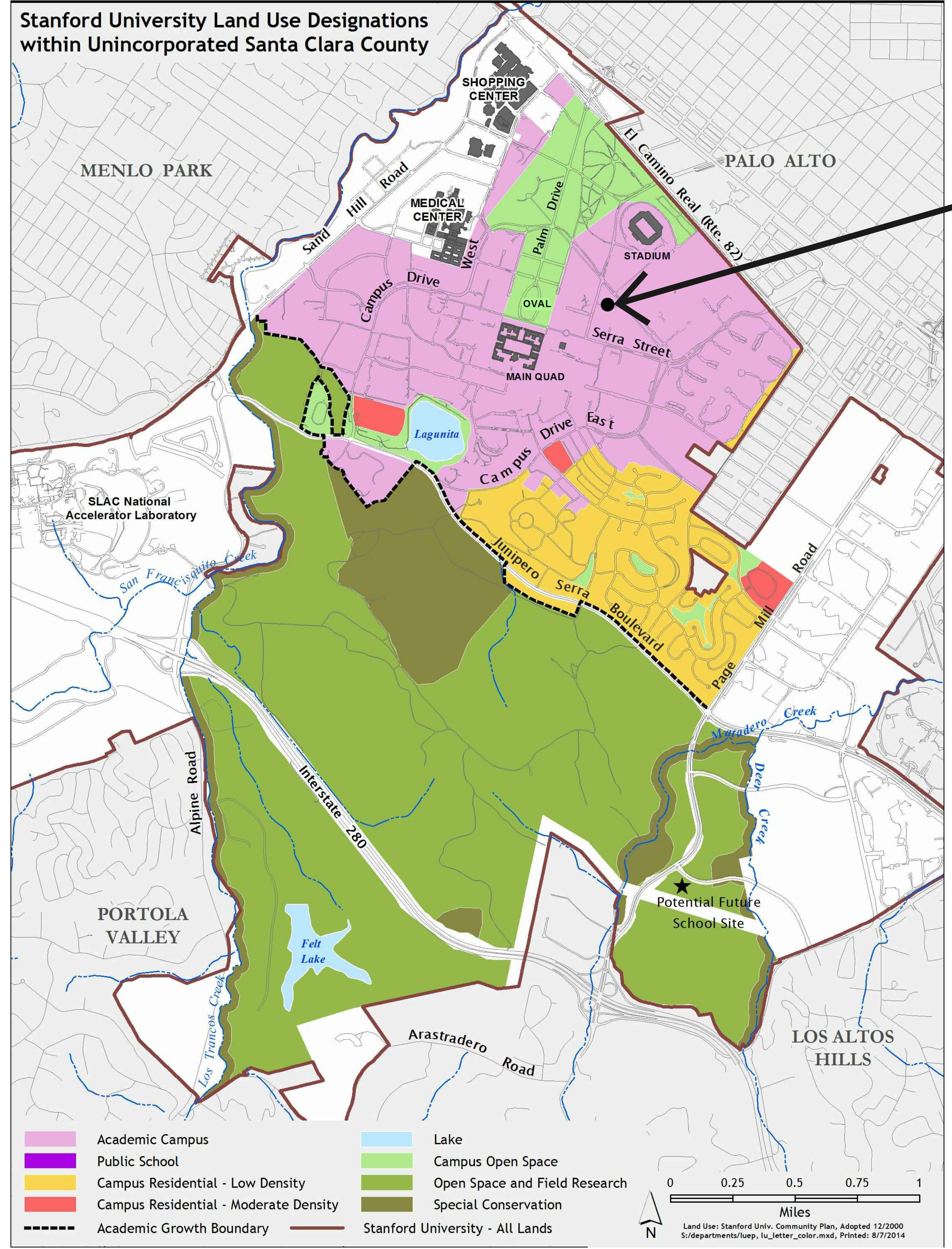
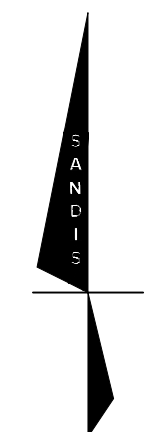
STANFORD UNIVERSITY
 EAST CAMPUS TENNIS
 SURGE TRAILERS

DATE: 12/20/23

SCALE: N/A

PL0.0

GUP INFORMATION MAP



DEPARTMENT OF PROJECT MANAGEMENT
340 Bonair Siding Rd
Stanford, CA 94305
TELEPHONE (650) 723-0022 FAX (650) 723-7444

GUP INFORMATION MAP

STANFORD UNIVERSITY
EAST CAMPUS TENNIS
SURGE TRAILERS

DATE: 12/20/23
SCALE: N/A

PL1.2

File: S:\220146\A\ENGINEERING\2_PLAN_SETS\SET1\ONSTIE\VCSA (EAST CAMPUS)\PL1.2_GUP_INFORMATION MAP\Date: Dec 20, 2023 - 4:17pm - amreano

NO PART OF THIS DOCUMENT MAY BE REPRODUCED IN ANY FORM INCLUDING PHOTOCOPY, RECORDING OR ANY INFORMATION RETRIEVABLE AND STORAGE SYSTEM, WITHOUT PERMISSION IN WRITING FROM SANDIS.

ABBREVIATIONS

AB	-	AGGREGATE BASE
AC	-	ASPHALT CONCRETE
AD	-	AREA DRAIN
ADA	-	AMERICANS WITH DISABILITIES ACT
ASB	-	AGGREGATE SUBBASE
BC	-	BEGINNING OF CURVE
BFP	-	BACK FLOW PREVENTOR
BLDC	-	BUILDING CORNER
BLDG	-	BUILDING
BOD	-	BOTTOM OF DOCK
BOL	-	BOLLARD
BOS	-	BOTTOM OF STEP
BOW	-	FG @ BOTTOM OF WALL
BVC	-	BEGIN VERTICAL CURVE
BW	-	BACK OF WALK
C	-	CONCRETE OR CIVIL
C&G	-	CURB AND GUTTER
CB	-	CATCH BASIN
CI	-	COMBINATION INLET
CIP	-	CAST IRON PIPE
CL	-	CENTER LINE OR CLASS
CMP	-	CORRUGATED METAL PIPE
CO	-	CLEANOUT
COI	-	CURB OPENING INLET
CONC	-	CONCRETE
CONST	-	CONSTRUCTION OR CONSTRUCT
CY	-	CUBIC YARD
DCDA	-	DOUBLE CHECK DETECTOR ASSEMBLY
DI	-	DROP INLET
DIP	-	DUCTILE IRON PIPE
DOM	-	DOMESTIC
DW	-	DOMESTIC WATER
DWG	-	DRAWING
E	-	EAST
EC	-	END OF CURVE
EP	-	EDGE OF PAVEMENT
ER	-	END OF RETURN
EVC	-	END VERTICAL CURVE
ELEV	-	ELEVATION
EX, EXIST.	-	EXISTING
FC	-	FACE OF CURB
FDC	-	FIRE DEPARTMENT CONNECTION
FF	-	FINISHED FLOOR
FG	-	FINISHED GRADE
FH	-	FIRE HYDRANT
FL	-	FLOW LINE
FOUND	-	FOUNDATION
FS	-	FINISHED SURFACE
FT	-	FOOT
FW	-	FIRE WATER
G	-	GROUND ELEVATION
GB	-	GRADE BREAK
GV	-	GATE VALVE
HCR	-	ACCESSIBLE RAMP
HP	-	HIGH POINT
INV	-	INVERT ELEVATION
JP	-	JOINT POLE
JT	-	JOINT TRENCH
LIP	-	LIP OF CUTTER
LP	-	LOW POINT
LSA	-	LANDSCAPE ARCHITECT
MAX	-	MAXIMUM
MEP	-	MECHANICAL/ELECTRICAL/PLUMBING
MH	-	MANHOLE
MIN	-	MINIMUM
MPVC	-	MIDPOINT OF VERTICAL CURVE
MON	-	MONUMENT
N	-	NORTH
N.I.C.	-	NOT IN CONTRACT
NO	-	NUMBER
NTS	-	NOT TO SCALE
P	-	PAVEMENT ELEVATION
PCC	-	PORTLAND CEMENT CONCRETE / POINT OF CONTINUOUS CURVATURE
PIV	-	POST INDICATOR VALVE
PL	-	PROPERTY LINE
PMH	-	POWER MANHOLE
POC	-	POINT ON CURVE
PP	-	POWER POLE
PRC	-	POINT OF REVERSE CURVATURE
PVC	-	POLYVINYL CHLORIDE PIPE
R	-	RADIUS
RC	-	RELATIVE COMPACTION
RCP	-	REINFORCED CONCRETE PIPE
RPPA	-	REDUCED PRESSURE PRINCIPLE ASSEMBLY
R/W	-	RIGHT OF WAY
S	-	SLOPE OR SOUTH
S.A.D.	-	SEE ARCHITECTURAL DRAWINGS
SB	-	SEDIMENT BASIN
SD	-	STORM DRAIN
S.E.D.	-	SEE ELECTRICAL DRAWINGS
SF	-	SILT FENCE
SG	-	SUBGRADE
S.L.D.	-	SEE LANDSCAPE DRAWINGS
S.M.D.	-	SEE MECHANICAL DRAWINGS
SMH	-	SIGNAL MANHOLE
S.P.D.	-	SEE PLUMBING DRAWINGS
SS	-	SANITARY SEWER
STA	-	STATION
STD	-	STANDARD
S/W	-	SIDEWALK
TC	-	TOP OF CURB
TD	-	TRENCH DRAIN
TOD	-	TOP OF DOCK
TOE	-	TOE OF SLOPE
TOS	-	TOP OF STAIR
TOW	-	FG @ TOP OF WALL
TS	-	TOP OF SLAB
TYP	-	TYPICAL
UON	-	UNLESS OTHERWISE NOTED
U/G	-	UNDERGROUND
VC	-	VERTICAL CURVE
WM	-	WATER METER
WV	-	WATER VALVE
W	-	WEST
WWF	-	WELDED WIRE FABRIC
W/	-	WITH

LEGEND

SAWCUT AND CONFORM LINE	---
RETAINING WALL	=====
A.C. PAVEMENT	=====
CONC. VALLEY GUTTER	=====
CONC. SIDEWALK OR PAD	=====
6" CURB & GUTTER	=====
EDGE OF A.C. PAVEMENT	EP
6" VERTICAL CURB	=====
CENTER LINE	---
SANITARY SEWER MAIN	8" SS
STORM DRAIN MAIN	12" SD
PERFORATED PIPE	6" SD
WATER MAIN	6" W
FIRE WATER MAIN	6" FW
DOMESTIC WATER MAIN	6" DW
CHILLED WATER MAIN	6" CHW
IRRIGATION LINE	2" IRR
HOT WATER SUPPLY & RETURN	HWS-HWR
STEAM LINE	ST
TRENCH DRAIN	=====
CONDENSATE RETURN	CR
FLOW LINE	---
CHAIN LINK FENCE	x x x x
GAS MAIN	G
ELECTRIC AND SIGNAL DUCT BANK	E
OVERHEAD ELECTRIC LINE	OHE
UNDERGROUND ELECTRIC LINE	UGE
STREET LIGHT CONDUIT	SL
CONTOUR ELEVATION LINE	B5
SPOT ELEVATION	x 95.94
DIRECTION OF SLOPE	2:1
GAS METER	GM
GAS VALVE	GV
WATER METER	WM
WATER VALVE	WV
FIRE HYDRANT	FH
BACK FLOW PREVENTOR	BFP
POST INDICATOR VALVE	PIV
FIRE DEPARTMENT CONNECTION	FDC
WATER LINE TEE	WT
CAP AND PLUG END	CP
AIR RELEASE VALVE	ARV
SIGN	S
ACCESSIBLE RAMP	AR
CONCRETE THRUST BLOCK	CTB
REDUCER	R
SANITARY SEWER MANHOLE	SSMH
SANITARY SEWER CLEANOUT	SSCO
STORM DRAIN MANHOLE	SDMH
STORM DRAIN AREA DRAIN	SDAD
STORM DRAIN CATCH BASIN	SDCB
STORM DRAIN CURB INLET	SDCI
STORM DRAIN CLEANOUT	SDCO
ELECTROLIER	EL
JOINT POLE	JP
OVERLAND RELEASE	OR
CONSTRUCTION DETAIL REFERENCE	15 C-5.2

EXISTING

PROPOSED

CONSTRUCTION GENERAL NOTES:

- THE BAY AREA AIR QUALITY MANAGEMENT DISTRICT (BAAQMD) HAS IDENTIFIED A SET OF FEASIBLE PM10 CONTROL MEASURES FOR ALL CONSTRUCTION ACTIVITIES. THESE CONTROL MEASURES, AS PREVIOUSLY REQUIRED IN THE PROGRAM ER, SHALL BE ADHERED TO DURING ALL CONSTRUCTION ACTIVITIES.
 - WATER ALL ACTIVE CONSTRUCTION AREAS AT LEAST TWICE DAILY;
 - COVER ALL TRUCKS HAULING SOIL, SAND, AND OTHER LOOSE MATERIALS OR REQUIRE ALL TRUCKS TO MAINTAIN AT LEAST TWO FEET OF FREEBOARD;
 - PAVE, APPLY WATER THREE TIMES DAILY, OR APPLY (NON-TOXIC) SOIL STABILIZERS ON ALL UNPAVED ACCESS ROADS, PARKING AREAS AND STAGING AREAS AT CONSTRUCTION SITES;
 - SWEEP DAILY (WITH WATER SWEEPERS) ALL PAVED ACCESS ROADS, PARKING AREAS AND STAGING AREAS AT CONSTRUCTION SITES;
 - SWEEP STREETS DAILY (WITH WATER SWEEPERS) IF VISIBLE SOIL MATERIAL IS CARRIED ON ADJACENT PUBLIC STREETS;
 - HYDROSEED OR APPLY (NON-TOXIC) SOIL STABILIZERS TO INACTIVE CONSTRUCTION AREAS (PREVIOUSLY GRADED AREAS INACTIVE FOR TEN DAYS OR MORE);
 - ENCLOSE, COVER, WATER TWICE DAILY OR APPLY (NON-TOXIC) SOIL BINDERS TO EXPOSED STOCKPILES (DIRT, SAND,);
 - LIMIT TRAFFIC SPEEDS ON UNPAVED ROADS TO 15 MPH;
 - INSTALL FIBER ROLLS, SANDBAGS OR OTHER EROSION CONTROL MEASURES TO PREVENT SILT RUNOFF TO PUBLIC ROADWAYS;
 - REPLANT VEGETATION IN DISTURBED AREAS AS QUICKLY AS POSSIBLE;
 - INSTALL WHEEL WASHERS FOR ALL EXISTING TRUCKS, OR WASH OFF THE TIRES OF TRACKS OF ALL TRUCKS AND EQUIPMENT LEAVING THE SITE; AND
 - SUSPEND EXCAVATION AND GRADING ACTIVITY WHEN WINDS (INSTANTANEOUS GUSTS) EXCEED 25 MPH."
- ALL CONSTRUCTION CONTRACTORS SHALL PROPERLY MAINTAIN THE EQUIPMENT AND WHERE FEASIBLE, USE "CLEAN FUEL" EQUIPMENT AND EMISSIONS CONTROL TECHNOLOGY (E.G., CNG FIRED ENGINES, CATALYTIC CONVERTERS, PARTICULATE TRAPS, ETC.). MEASURES TO REDUCE DIESEL EMISSION WOULD BE CONSIDERED FEASIBLE WHEN THEY ARE CAPABLE OF BEING USED ON EQUIPMENT WITHOUT INTERFERING SUBSTANTIALLY WITH EQUIPMENT PERFORMANCE.

TREE PROTECTION NOTES:

- THE GENERAL CONTRACTOR SHALL TAKE THE FOLLOWING STEPS TO PRESERVE AND PROTECT ALL EXISTING TREES SHOWN TO REMAIN:
 - PRIOR TO COMMENCEMENT OF DEMOLITION, GRADING AND CONSTRUCTION, TEMPORARY FENCING SHALL BE INSTALLED AT THE DRIP LINE OF EACH TREE TO BE PRESERVED. REFER TO DETAIL, FENCED AREAS SHALL NOT BE VIOLATED DURING CONSTRUCTION.
 - ALL EXISTING ON-SITE TREES INDICATED TO REMAIN SHALL BE TRIMMED BY A LICENSED ARBORIST FOUR WEEKS PRIOR TO COMMENCEMENT OF DEMOLITION OF GRADING OPERATIONS. ALL BROKEN OR BRUISED BRANCHES AND DEAD WOOD SHALL BE REMOVED. ALL CUTS OVER 1/2" DIAMETER SHALL BE PAINTED WITH "TREE SEAL" OR APPROVED EQUAL. IN NO CASE SHALL ANY TREE BE TOPPED.
 - ALL EXISTING ON-SITE TREES INDICATED TO REMAIN SHALL BE FERTILIZED BY ROOT INJECTION BY A LICENSED ARBORIST FOUR WEEKS PRIOR TO COMMENCEMENT OF GRADING OR DEMOLITION OPERATIONS.
- ALL EXISTING ON-SITE TREES INDICATED TO REMAIN SHALL BE PRESERVED AND PROTECTED DURING CONSTRUCTION. NO GRADING IS PERMITTED WITHIN THE DRIP-LINE OF ANY TREE INDICATED TO REMAIN. NO DEBRIS OR MATERIALS SHALL BE STOCKPILED AROUND THE BASE OF THE TREES. NO TRADESMAN SHALL DUMP DEBRIS OR FLUIDS WITHIN THE DRIP-LINE OF ANY TREES (PLASTER, PAINT, THINNER, ETC.). ALL TREES SHALL BE FENCED BY THE GENERAL CONTRACTOR TO AVOID COMPACTION OF THE TREE'S ROOT SYSTEM AND DAMAGE TO THE BARK. THE FENCE SHALL BE SIX FEET HIGH, AND EXTEND OUT TO THE DRIP-LINE OF THE TREE.
- ALL EXISTING ON-SITE TREES INDICATED TO REMAIN SHALL BE WATERED BY THE GENERAL CONTRACTOR CONTINUOUSLY DURING THE COURSE OF CONSTRUCTION. IF POTABLE WATER IS NOT AVAILABLE ON THE SITE, A WATERING TRUCK SHALL BE EMPLOYED TO ACCOMPLISH THE WATERING.
- DO NOT DISTURB SURFACE SOIL WITHIN TREE DRIP-LINE EXCEPT AS MANDATED BY CONSTRUCTION PLANS.
- DURING PERIODS OF EXTENDED DROUGHT, SPRAY WOAK TREES TO REMOVE ACCUMULATED CONSTRUCTION.
- GRADE IN LINES RADIAL TO THE EXISTING TREE RATHER THAN TANGENTIAL. IF ROOTS ARE ENCOUNTERED WHILE GRADING, CUT THEM CLEANLY WITH A SAW. DO NOT RIP THEM WITH GRADING EQUIPMENT.
- DO NOT ATTEMPT DEMOLITION OF TREES WITH GRADING EQUIPMENT WHEN TREES THAT ARE TO BE PRESERVED ARE IN THE VICINITY.

SURVEY MONUMENT PRESERVATION

- THE LANDOWNER / CONTRACTOR MUST PROTECT AND ENSURE THE PERPETUATION OF SURVEY MONUMENTS AFFECTED BY CONSTRUCTION ACTIVITIES.
- PRIOR TO THE START OF CONSTRUCTION, THE CONTRACTOR SHALL LOCATE, STAKE, AND FLAG OTHERWISE IDENTIFY WITH PAINT OR OTHER MARKINGS ALL PERMANENT SURVEY MONUMENTS OF RECORD AND ANY UNRECORDED MONUMENTS THAT ARE DISCOVERED THAT ARE WITHIN 50 FEET OF THE CONSTRUCTION ACTIVITY.
- THE LANDOWNER, CONTRACTOR AND/OR ANY PERSON PERFORMING CONSTRUCTION ACTIVITIES THAT WILL OR MAY DISTURB AN EXISTING MONUMENT, CORNER STAKE, OR ANY OTHER PERMANENT SURVEYED MONUMENT SHALL CAUSE TO HAVE A LICENSED LAND SURVEYOR OR CIVIL ENGINEER, AUTHORIZED TO PRACTICE SURVEYING, ENSURE THAT A CORNER RECORD AND/OR RECORD OF SURVEY ARE FILED WITH THE COUNTY SURVEYOR'S OFFICE PRIOR TO DISTURBING SAID MONUMENTS AND RESET PERMANENT MONUMENT(S) IN THE SURFACE OF THE NEW CONSTRUCTION OR SET A WITNESS MONUMENT(S) TO PERPETUATE THE LOCATION IF ANY PERMANENT MONUMENT COULD BE DESTROYED, DAMAGED, COVERED, DISTURBED, OR OTHERWISE OBLITERATED. THE LICENSED LAND SURVEYOR OR CIVIL ENGINEER SHALL FILE A CORNER RECORD OR RECORD OF SURVEY WITH COUNTY SURVEYOR PRIOR TO FINAL ACCEPTANCE OF THE PROJECT BY THE LAND DEVELOPMENT ENGINEERING INSPECTOR.



BUILD ON.
SANDIS.NET

DATE: 12/20/2023
SCALE: N/A
DPM PROJECT #: 5698
PROJECT No.:
220148.A

DATE: DECEMBER 20, 2023
NATHAN DICKINSON
R.C.E. NO. 79716, EXPIRES 9-30-24

No.	REVISION	DATE	BY

EAST CAMPUS TENNIS SURGE TRAILERS

STANFORD

CALIFORNIA

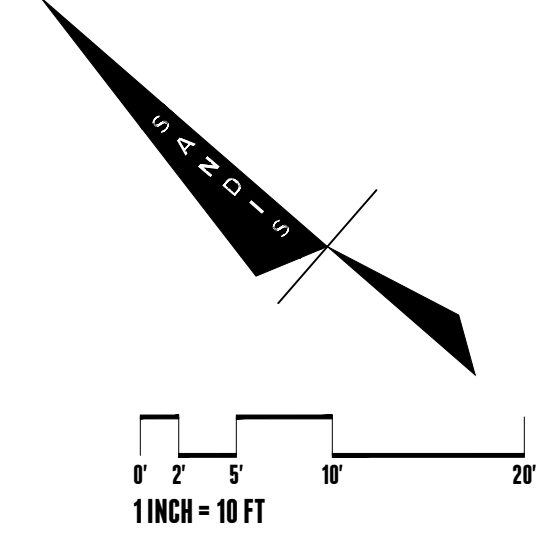
CONSTRUCTION NOTES

SHEET

C-1.1

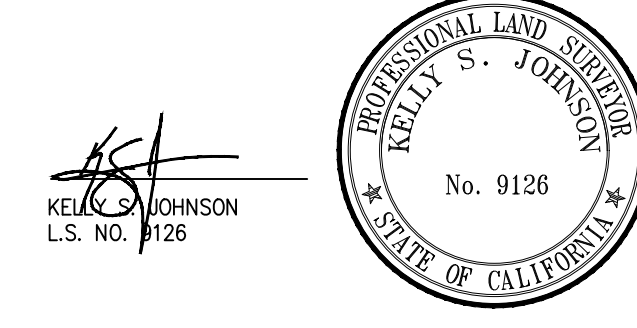
4 OF 12 SHEETS

NO PART OF THIS DOCUMENT MAY BE REPRODUCED IN ANY FORM INCLUDING PHOTOCOPY, RECORDING OR ANY INFORMATION RETRIEVABLE AND STORAGE SYSTEM, WITHOUT PERMISSION IN WRITING FROM SANDIS.

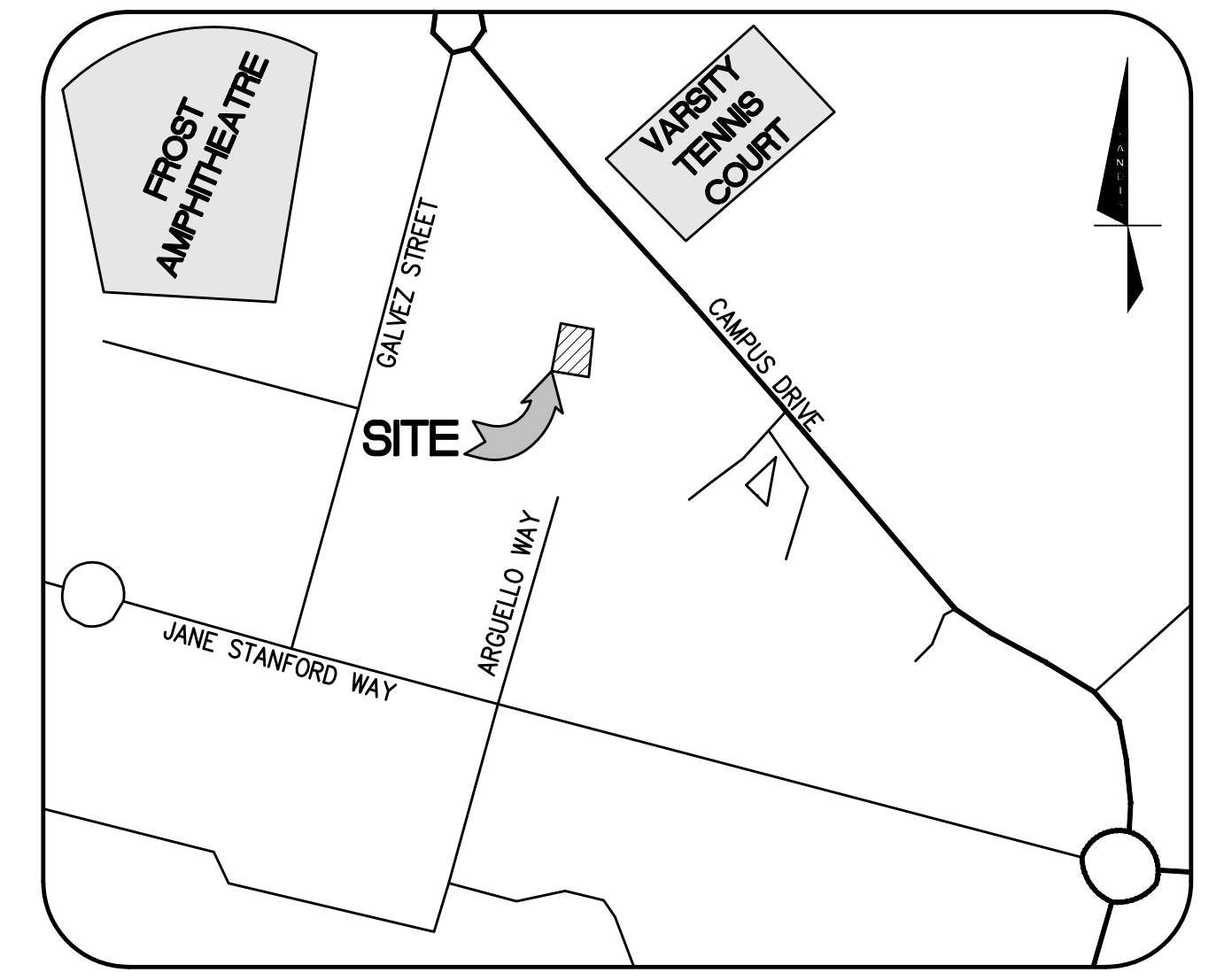


SURVEYOR'S STATEMENT

THIS MAP CORRECTLY REPRESENTS A SURVEY MADE BY ME OR UNDER MY DIRECTION IN CONFORMANCE WITH THE REQUIREMENTS OF THE PROFESSIONAL LAND SURVEYORS' ACT AT THE REQUEST OF STANFORD UNIVERSITY IN AUGUST, 2023.



10/03/2023
DATE



VICINITY MAP
NOT TO SCALE

BENCHMARK

THE ELEVATION REFERENCE FOR THIS SURVEY IS A STANFORD MONUMENT S12, WHICH IS A SET 2" BRASS DISK STAMPED "STANFORD 12, L.S. 5237" IN MONUMENT WELL IN MIDDLE OF A TRAFFIC ISLAND ON CAMPUS DRIVE EAST IN BETWEEN GALVEZ STREET AND SAM MCDONALD MALL. PER R.O.S. 747 M 40-49.
ELEVATION= 64.97 FEET (NGVD 29 DATUM)

SITE BENCHMARK

SEE DRAWING FOR INDIVIDUAL SITE BENCHMARKS

UNDERGROUND UTILITY NOTE

THE TYPES, LOCATIONS, SIZES AND/OR DEPTHS OF EXISTING UNDERGROUND UTILITIES AS SHOWN ON THIS TOPOGRAPHIC SURVEY ARE APPROXIMATE AND WERE OBTAINED FROM SOURCES OF VARYING RELIABILITY. ONLY ACTUAL EXCAVATION WILL REVEAL THE TYPES, EXTENT, SIZES, LOCATIONS AND DEPTHS OF SUCH UNDERGROUND UTILITIES. UNDERGROUND UTILITY LOCATING WAS NOT PERFORMED BY SANDIS. OTHER UNDERGROUND UTILITIES MAY EXIST THAT ARE NOT SHOWN ON THIS MAP.

SURVEY NOTES

- ALL DISTANCES AND DIMENSIONS ARE SHOWN IN FEET AND DECIMALS THEREOF.
- DATES OF FIELD SURVEY: 09/13/2023 AND 09/14/2023.
- HORIZONTAL CONTROL WAS BASED ON A GPS SURVEY USING GNSS RTK METHODS CONNECTED TO THE LEICA SMARTNET REAL TIME NETWORK TIED INTO CALIFORNIA STATE PLANE COORDINATES NAD83, EPOCH 2023.250.

LEGEND

- CURB LINE
- UNDERGROUND STORM DRAIN
- PAVEMENT
- CONCRETE
- PAVERS
- STORM DRAIN MANHOLE
- DRAIN INLET/AREA DRAIN
- WATER METER / BOX
- WATER VALVE
- IRRIGATION CONTROL / VALVE BOX
- ELECTRIER ON TOP OF POLE
- STREET LIGHT PULLBOX
- SIGN
- BOLLARD
- POINT, ELEVATION AND DESCRIPTION
- CONTOURS (1-FT INTERVALS)
- TREE (DIAMETER SIZE IN INCHES)

ABBREVIATIONS

- ACR - ACCESSIBILITY RAMP
- CONC - CONCRETE
- EP - EDGE OF PAVEMENT
- FL - FLOW LINE
- G - GROUND
- P - PAVEMENT
- PAVE - BRICK PAVEMENT
- TC - TOP OF CURB



BUILD ON.
SANDIS.NET

DATE: 12/20/2023
SCALE: 1"=20'
DPM PROJECT #: 5698
PROJECT No.:
220148.A

DATE: DECEMBER 20, 2023
NATHAN DICKINSON
R.C.E. NO. 79716, EXPIRES 9-30-24

No.	REVISION	DATE	BY

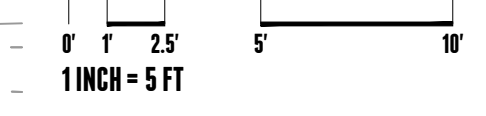
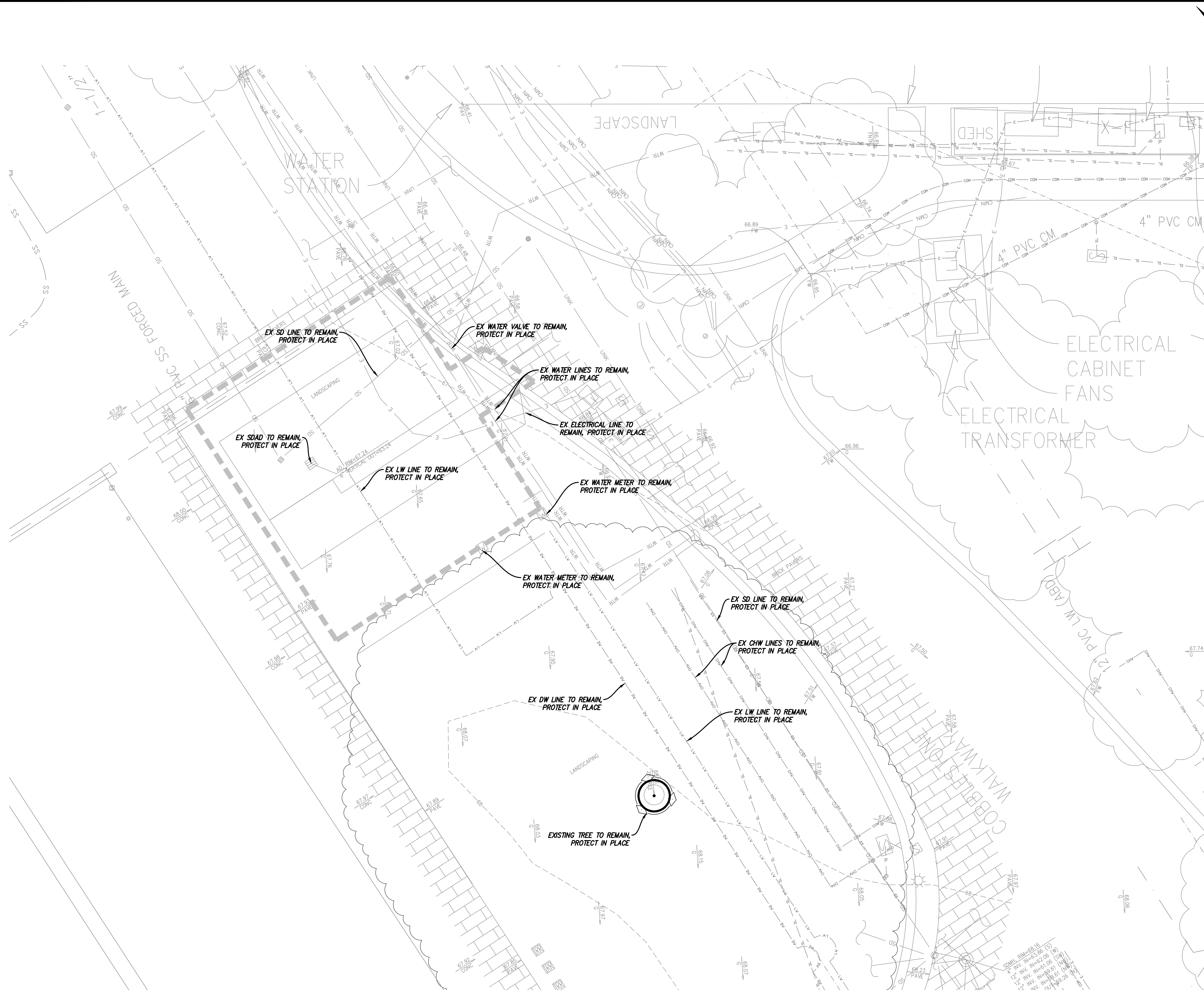
EAST CAMPUS TENNIS SURGE TRAILERS

STANFORD CALIFORNIA

TOPOGRAPHIC SURVEY

SHEET
C-2.0
5 OF 12 SHEETS

NO PART OF THIS DOCUMENT MAY BE REPRODUCED IN ANY FORM INCLUDING PHOTOCOPY, RECORDING OR ANY INFORMATION RETRIEVABLE AND STORAGE SYSTEM, WITHOUT PERMISSION IN WRITING FROM SANDIS.



LEGEND

- LIMIT OF WORK
- EXISTING TREE TO REMAIN.

DEMOLITION NOTES

1. COORDINATE DEMOLITION WORK WITH STANFORD UNIVERSITY'S REQUIREMENTS; ADHERE TO ALL THEIR REQUIREMENTS.
2. DEMOLITION AND CONSTRUCTION WORK MAY BE PERFORMED OVER THE TOP OF AND AROUND COMMUNICATION AND POWER SERVICES. CONTRACTOR SHALL WORK BY HAND IN ALL AREAS WHERE THESE SERVICES MIGHT BE HARMED BY LARGER LESS PRECISE EQUIPMENT.
3. THE CONTRACTOR SHALL LOCATE AND CLEARLY MARK (AND THEN PRESERVE THESE MARKERS) FOR THE DURATION OF CONSTRUCTION OF ALL UNDERGROUND UTILITIES, INCLUDING TELEPHONE, DATA, STREET LIGHT, SIGNAL LIGHT AND POWER FACILITIES, LOW TEMPERATURE HOT WATER AND CHILLED HOT WATER LINES THAT ARE IN OR NEAR THE AREA OF DEMOLITION.
4. CONTRACTOR'S BID IS TO INCLUDE ALL VISIBLE SURFACE AND ALL SUBSURFACE FEATURES IDENTIFIED TO BE REMOVED OR ABANDONED IN THESE DOCUMENTS.
5. THE CONTRACTOR SHALL BE RESPONSIBLE FOR A SITE INSPECTION TO FULLY ACKNOWLEDGE THE EXTENT OF THE DEMOLITION WORK.
6. THE CONTRACTOR SHALL BE RESPONSIBLE FOR OBTAINING ANY AND ALL PERMITS NECESSARY FOR ENCROACHMENT, GRADING, DEMOLITION, AND DISPOSAL OF SAID MATERIALS AS REQUIRED BY PRIVATE, LOCAL AND STATE JURISDICTIONS. THE CONTRACTOR SHALL PAY ALL FEES ASSOCIATED WITH THE DEMOLITION WORK.
7. CONTRACTOR SHALL PAY DISPOSAL FEES.
8. BACKFILL ALL DEPRESSIONS AND TRENCHES FROM DEMOLITION OF FOUNDATIONS & UTILITIES TO EXISTING GRADE AND TO THE SATISFACTION OF THE GEOTECHNICAL ENGINEER, AND/OR UNIVERSITY FIELD CONSTRUCTION MANAGER (FCM).
9. WITHIN LIMITS OF WORK, REMOVE CURBS, GUTTERS, LANDSCAPING, SIGNAGE, TREES, SHRUBS, ASPHALT, UNDERGROUND PIPES, ETC. AS INDICATED ON THE DRAWINGS.
10. CONTRACTOR SHALL BE RESPONSIBLE FOR DISPOSING ALL DEMOLITION MATERIALS, OR STORING SELECTED ITEMS BY UNIVERSITY'S REPRESENTATIVE AT DESIGNATED LOCATIONS.
11. PRIOR TO BEGINNING DEMOLITION WORK, CONTRACTOR TO NOTIFY AND COORDINATE THE REMOVAL AND/OR ABANDONMENT OF ALL AFFECTED UTILITIES WITH THE FCM.
12. CONTRACTOR RESPONSIBLE FOR PREPARING WASTE MANAGEMENT PLAN, TRAINING OF EMPLOYEES & SUBCONTRACTORS, AND ENSURING PROPER REMOVAL AND DISPOSAL OF ALL HAZARDOUS MATERIALS.
13. THESE DRAWINGS DO NOT ADDRESS CONTRACTOR MEANS, METHODS OR PROCESSES THAT MAY BE ASSOCIATED WITH ANY TOXIC SOILS IF FOUND ON SITE. THE CONTRACTOR IS RESPONSIBLE FOR COMPLYING WITH ALL UNIVERSITY AND COUNTY STANDARDS AND APPROPRIATE REGULATIONS IF TOXIC SOILS ARE ENCOUNTERED. CONTRACTOR MUST NOTIFY THE FCM IMMEDIATELY IF ANY SOILS ARE EVEN SUSPECTED OF BEING CONTAMINATED.
14. CONTRACTOR SHALL CONTACT UNDERGROUND SERVICE ALERT, USA, FOR LOCATION AND MARKING OF UNDERGROUND UTILITIES AT LEAST 48 HOURS PRIOR TO COMMENCEMENT OF CONSTRUCTION
15. CONTRACTOR SHALL MAINTAIN THE EXISTING SITE AND STREETS IN A SAFE AND USABLE MANNER SUCH THAT EMERGENCY VEHICLE ACCESS IS AVAILABLE AT ALL TIMES. CONTRACTOR TO SUPPLY, INSTALL AND MAINTAIN ALL NECESSARY FENCING, GATES, BARRICADES, SIGNAGE, AND PROVISIONS FOR ENSURING THE PROJECT'S SECURITY AND SAFE PASSAGEWAY AROUND IT.
16. CONTRACTOR SHALL GATHER ALL CONSTRUCTION DEBRIS ON A REGULAR BASIS AND PLACE IT IN A DUMPSTER OR OTHER CONTAINER WHICH IS EMPTIED OR REMOVED ON A REGULAR BASIS. WHEN APPROPRIATE, USE TARPS ON THE GROUND TO COLLECT FALLEN DEBRIS OR SPLATTERS THAT COULD CONTRIBUTE TO STORM WATER RUNOFF POLLUTION.
17. CONTRACTOR SHALL CLEAR AND GRUB WITHIN LIMIT OF WORK AS NEEDED TO PERFORM DEMOLITION ACTIVITIES.
18. SAWCUT & REMOVE HARDSCAPE SUCH AS, BUT NOT LIMITED TO, AC PAVEMENT, CURB, SIDEWALK, ETC.
19. TAKE ALL NECESSARY PRECAUTIONS NOT TO DAMAGE EXISTING UNDERGROUND UTILITY LINES TO REMAINS DURING DEMOLITION. CONTRACTOR TO HIRE AN INDEPENDENT UNDERGROUND UTILITY LOCATOR SERVICE TO LOCATE & PAINT UTILITIES IN THE FIELD PRIOR TO CONSTRUCTION. ANY DAMAGE TO EXISTING UTILITIES TO REMAINS SHALL BE REPAIRED AT THE CONTRACTOR'S EXPENSE.
20. CONTRACTOR TO GRIND/ROUND CONCRETE EDGE AFTER SAWCUTTING TO MAINTAIN APPEARANCE AND SAFETY.
21. CONTRACTOR TO SCHEDULE MEETING WITH HIGH VOLTAGE SHOP PRIOR TO REMOVING ANY EXISTING PULLBOXES.

TREE DISPOSITION TABLE

SPECIES	DBH (IN.)	REMOVE/REMAIN	PROTECTED STATUS
Coast Live Oak	26	REMAIN	PROTECTED



BUILD ON.
SANDIS.NET

DATE: 12/20/2023
SCALE: 1"=5'
DPM PROJECT #: 5698
PROJECT No.:
220148.A

DATE: DECEMBER 20, 2023
NATHAN DICKINSON
R.C.E. NO. 79716, EXPIRES 9-30-24

No.	REVISION	DATE	BY

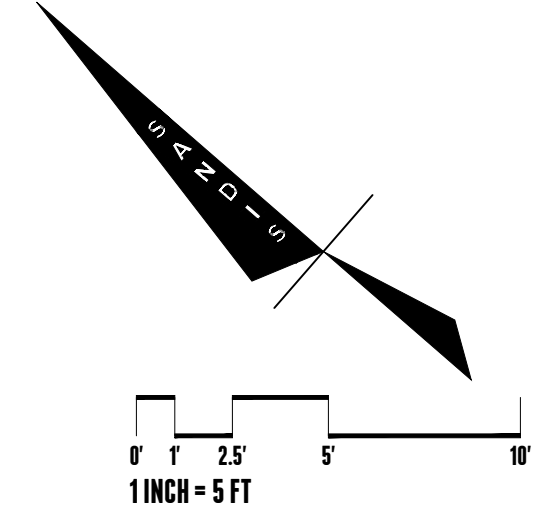
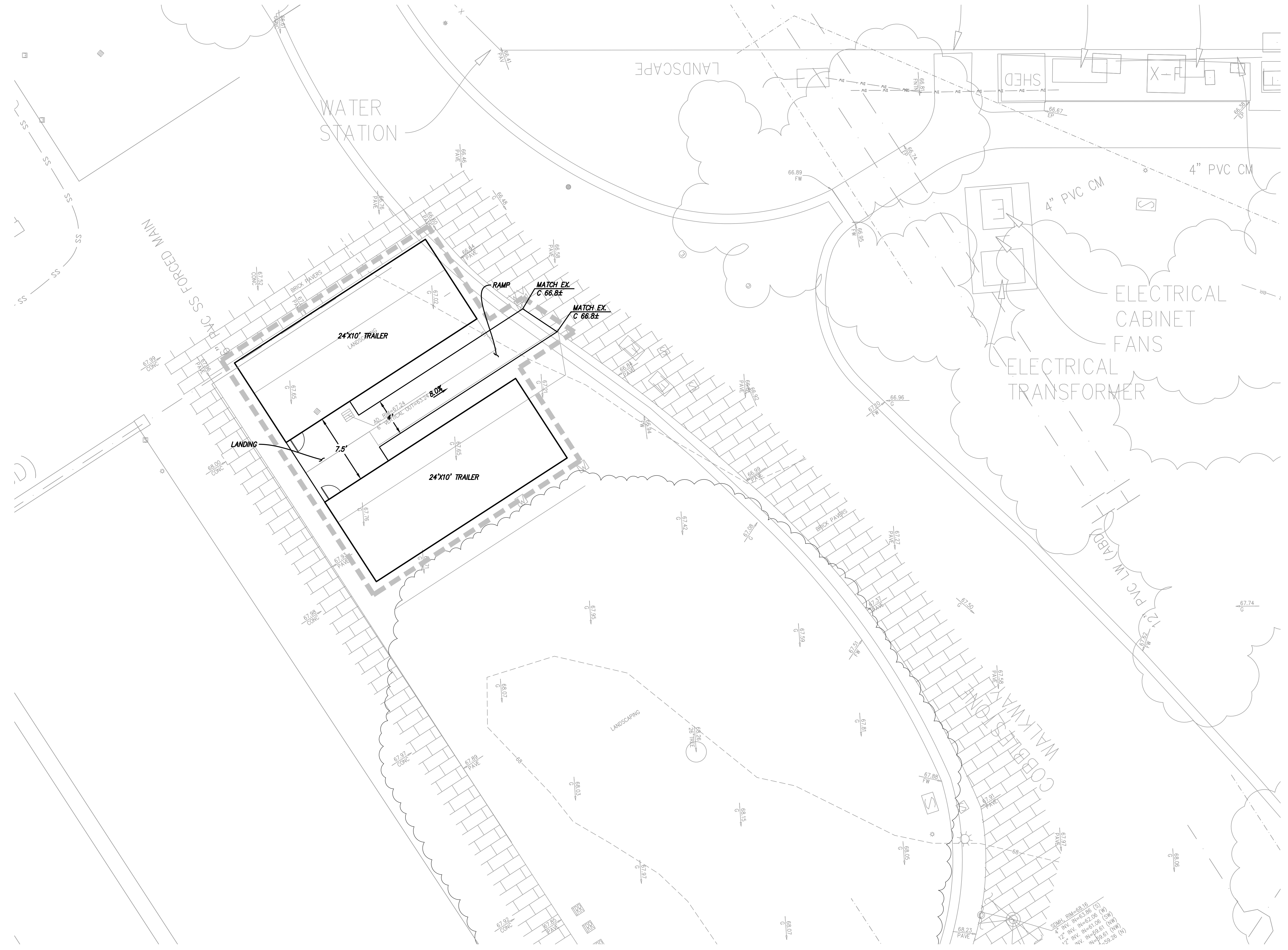
EAST CAMPUS TENNIS SURGE TRAILERS

STANFORD CALIFORNIA

DEMOLITION PLAN

SHEET
C-3.0
6 OF 12 SHEETS

NO PART OF THIS DOCUMENT MAY BE REPRODUCED IN ANY FORM INCLUDING PHOTOCOPY, RECORDING OR ANY INFORMATION RETRIEVABLE AND STORAGE SYSTEM, WITHOUT PERMISSION IN WRITING FROM SANDIS.



LEGEND

- LIMIT OF WORK
- SAWCUT LINE

GRADING NOTES

1. GRADE IMPERVIOUS AREAS AT 2% AWAY FROM THE BUILDING FOR MINIMUM 5' PER BUILDING CODE.
2. GRADE PERVIOUS AREAS AT 5% MINIMUM AWAY FROM BUILDING UNLESS OTHERWISE NOTED.

GENERAL NOTES

1. ADJUST ANY UTILITY RIM/STRUCTURES TO PROPOSED GRADE PRIOR TO INSTALLING FINAL LIFT OF AC OR POURING CONCRETE.
2. CONTRACTOR SHALL HOLD 1/4" THRESHOLD BELOW FINISH FLOOR OF DOORWAYS.

ADA NOTES

1. ALL SITE WORK SHALL BE IN CONFORMANCE WITH TITLE 24 OF THE CALIFORNIA ADMINISTRATIVE CODE AND WITH THE AMERICANS WITH DISABILITIES ACT.
2. CURB RAMP SHALL NOT EXCEED A SLOPE OF 1:12 (8.33%).
3. RAMP TO BUILDINGS SHALL NOT EXCEED A SLOPE OF 1:20 (5%) UNLESS RAILINGS ARE SHOWN ON ARCHITECTURAL PLANS, IN WHICH CASE THE SLOPE SHALL NOT EXCEED 1:12 (8.33%). A 2% MAXIMUM SLOPE LANDING SHALL BE PROVIDED AT PRIMARY ENTRANCES TO BUILDINGS. THE LANDINGS SHALL HAVE A MINIMUM WIDTH OF 60" AND A MINIMUM DEPTH OF 60" WHEN THE DOOR OPENS INTO THE BUILDING, AND 42" PLUS THE WIDTH OF THE DOOR WHEN THE DOOR OPEN ONTO THE LANDING.
4. RAMP ARE DEFINED AS ANY WALKWAY BETWEEN SLOPES OF 1:20 (5%) AND 1:12 (8.33%), AND SHALL HAVE A MINIMUM WIDTH OF 48" AND A MAXIMUM CROSS-SLOPE OF 2%. RAMP EXCEEDING 2'-6" VERTICAL SHALL HAVE INTERMEDIATE (2% MAXIMUM SLOPE) LANDINGS HAVING A MINIMUM LENGTH IN THE DIRECTION OF TRAVEL OF 60". BOTTOM LANDINGS AT CHANGES IN RAMP DIRECTION SHALL HAVE A MINIMUM LENGTH OF 72".
5. MAXIMUM CROSS SLOPE ON ANY SIDEWALK OR RAMP SHALL BE 2%. MAXIMUM SLOPE WITHIN PARKING STALLS DESIGNATED AS HANDICAPPED PARKING SHALL BE 2% IN ANY DIRECTION.
6. ALL SIDEWALK SHALL HAVE A 4' MINIMUM CLEAR WIDTH FOR ACCESSIBLE CONFORMANCE.

CONSTRUCTION NOTES

- A. STANFORD SHALL MAKE FEASIBLE ATTEMPTS TO LIMIT THE NUMBER OF CONSTRUCTION MATERIAL DELIVERIES FROM 7:00 A.M. TO 9:00 A.M. AND FROM 4:00 P.M. TO 6:00 P.M. (PEAK-HOURS) ON WEEKDAYS. CONSTRUCTION MATERIAL DELIVERY SHALL NOT RESULT IN REDUCTION IN ON-STREET PARKING; REDUCTION IN PEDESTRIAN, BICYCLE, AND PUBLIC TRANSIT ACCESS; USE OF NON-TRUCK ROUTES BY CONSTRUCTION TRAFFIC; DAMAGE TO ROADWAYS; AND INTERFERENCE WITH SPECIAL EVENTS. STANFORD SHALL PROVIDE ESTIMATED TOTAL CONSTRUCTION MATERIAL DELIVERIES, AS WELL AS ESTIMATED MATERIAL DELIVERIES, BETWEEN THESE PEAK-HOURS AS PART OF THE CONSTRUCTION LOGISTICS AND MANAGEMENT PLAN, AND PROVIDE NOTICE TO RESIDENTS AND INTERESTED PARTIES FOR DELIVERIES DURING PEAK HOURS.
- B. TRUCKS EXPORTING/IMPORTING DIRT AND BUILDING MATERIALS FOR THE PROJECT SHALL USE APPROVED TRUCK ROUTES SHOWN IN THE 2000 GUP, AS DESIGNATED BY THE CITIES OF PALO ALTO AND MENLO PARK.



BUILD ON.
SANDIS.NET

DATE: 12/20/2023
SCALE: 1"=5'
DPM PROJECT #: 5698
PROJECT No.:
220148.A

DATE: DECEMBER 20, 2023
NATHAN DICKINSON
R.C.E. NO. 79716, EXPIRES 9-30-24

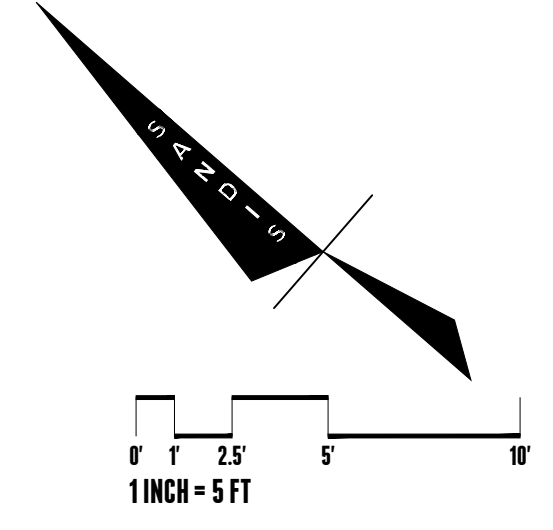
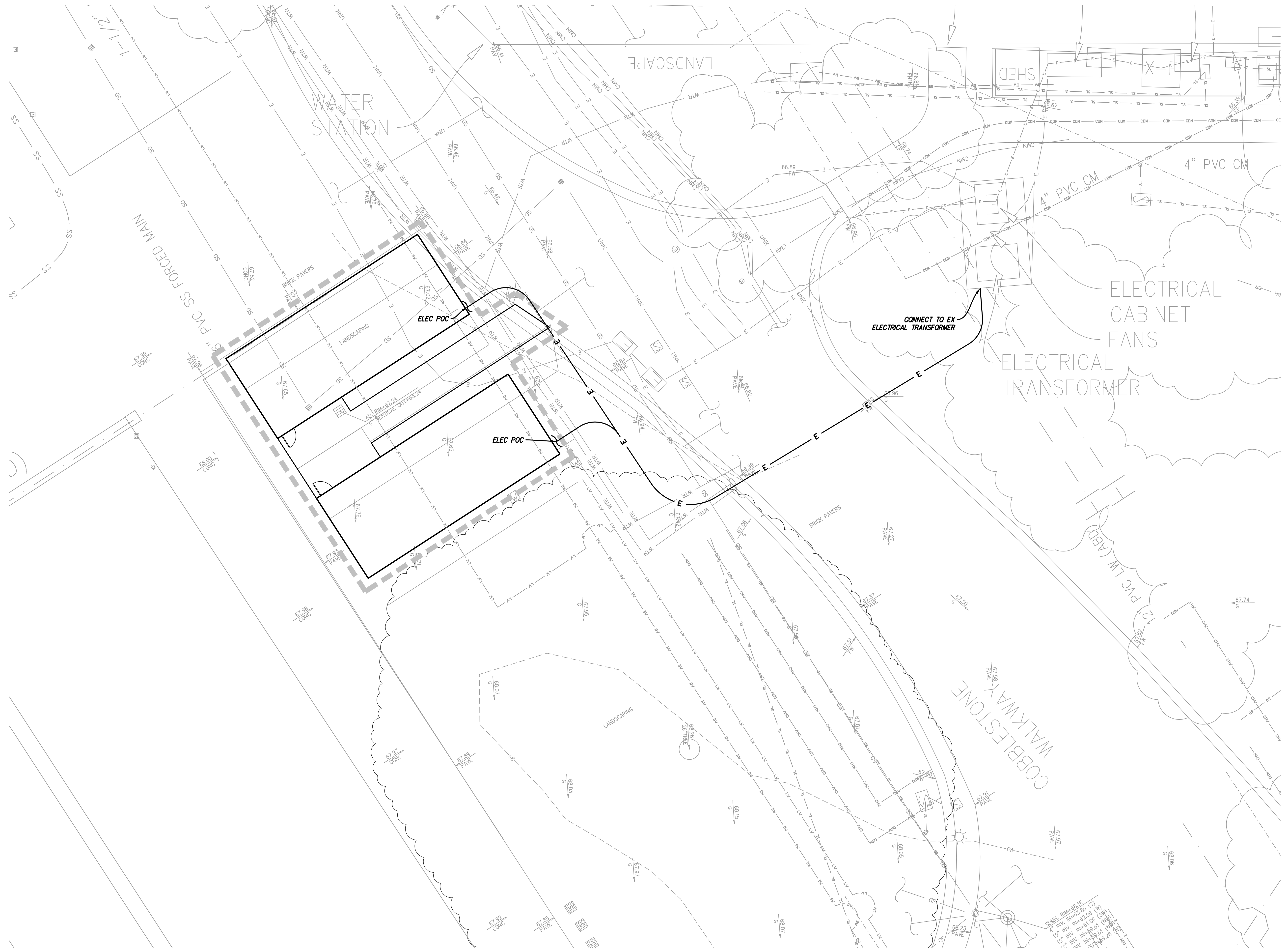
No.	REVISION	DATE	BY

EAST CAMPUS TENNIS SURGE TRAILERS
STANFORD CALIFORNIA

GRADING AND DRAINAGE PLAN

SHEET
C-4.0
7 OF 12 SHEETS

NO PART OF THIS DOCUMENT MAY BE REPRODUCED IN ANY FORM INCLUDING PHOTOCOPY, RECORDING OR ANY INFORMATION RETRIEVABLE AND STORAGE SYSTEM, WITHOUT PERMISSION IN WRITING FROM SANDIS.



LEGEND

--- LIMIT OF WORK

— E — PROPOSED ELEC LINE



BUILD ON.
SANDIS.NET

DATE: 12/20/2023
SCALE: 1"=5'
DPM PROJECT #: 5698
PROJECT No.:
220148.A

DATE: DECEMBER 20, 2023
NATHAN DICKINSON
R.C.E. NO. 79716, EXPIRES 9-30-24

No.	REVISION	DATE	BY

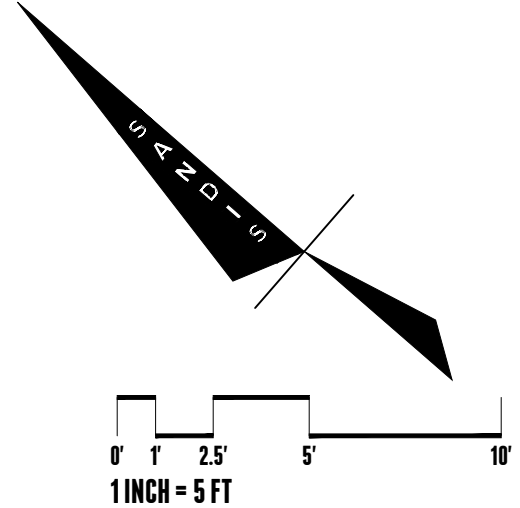
EAST CAMPUS TENNIS SURGE TRAILERS

STANFORD CALIFORNIA


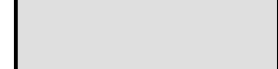
UTILITY PLAN

SHEET
C-5.0
8 OF 12 SHEETS

NO PART OF THIS DOCUMENT MAY BE REPRODUCED IN ANY FORM INCLUDING PHOTOCOPY, RECORDING OR ANY INFORMATION RETRIEVABLE AND STORAGE SYSTEM, WITHOUT PERMISSION IN WRITING FROM SANDIS.



LEGEND

	DRAINAGE MANAGEMENT AREA
	PROPOSED NON-VEHICULAR IMPERVIOUS AREA (626 SF)

STORMWATER MANAGEMENT NOTES:

1. THIS PLAN PRESENTS METHODS AND CALCULATIONS FOR COMPLYING WITH THE REQUIREMENTS OF PROVISION C.3 OF THE MUNICIPAL REGIONAL STORMWATER PERMIT IN ACCORDANCE WITH THE SANTA CLARA COUNTY PROGRAM AND THE STANFORD REQUIREMENTS.
2. THIS PROJECT CREATES/REPLACES 626 SQUARE FEET OF IMPERVIOUS AREA AND FALLS BELOW THE 5,000 SQUARE FOOT THRESHOLD FOR C.3 STORMWATER TREATMENT. THIS PROJECT IS EXEMPT FROM C.3 STORMWATER TREATMENT REQUIREMENTS.

DRAINAGE AREA:

PROPOSED IMPERVIOUS AREA	626	SF
PROPOSED PERVIOUS AREA	0	SF
REPLACED VEHICULAR IMPERVIOUS AREA	0	SF
TOTAL	626	SF

EXISTING AND PROPOSED AREA QUANTITIES

	EXISTING	PROPOSED
IMPERVIOUS AREA	0 SF	626 SF
PERVIOUS AREA	0 SF	0 SF
TOTAL	0 SF	626 SF



BUILD ON.
SANDIS.NET

DATE: 12/20/2023
SCALE: 1"=5'
DPM PROJECT #: 5698
PROJECT No.: 220148.A

DATE: DECEMBER 20, 2023
NATHAN DICKINSON
R.C.E. NO. 79716, EXPIRES 9-30-24

No.	REVISION	DATE	BY

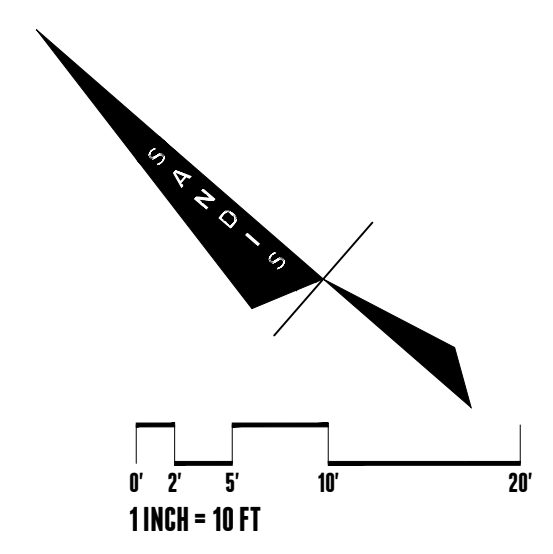
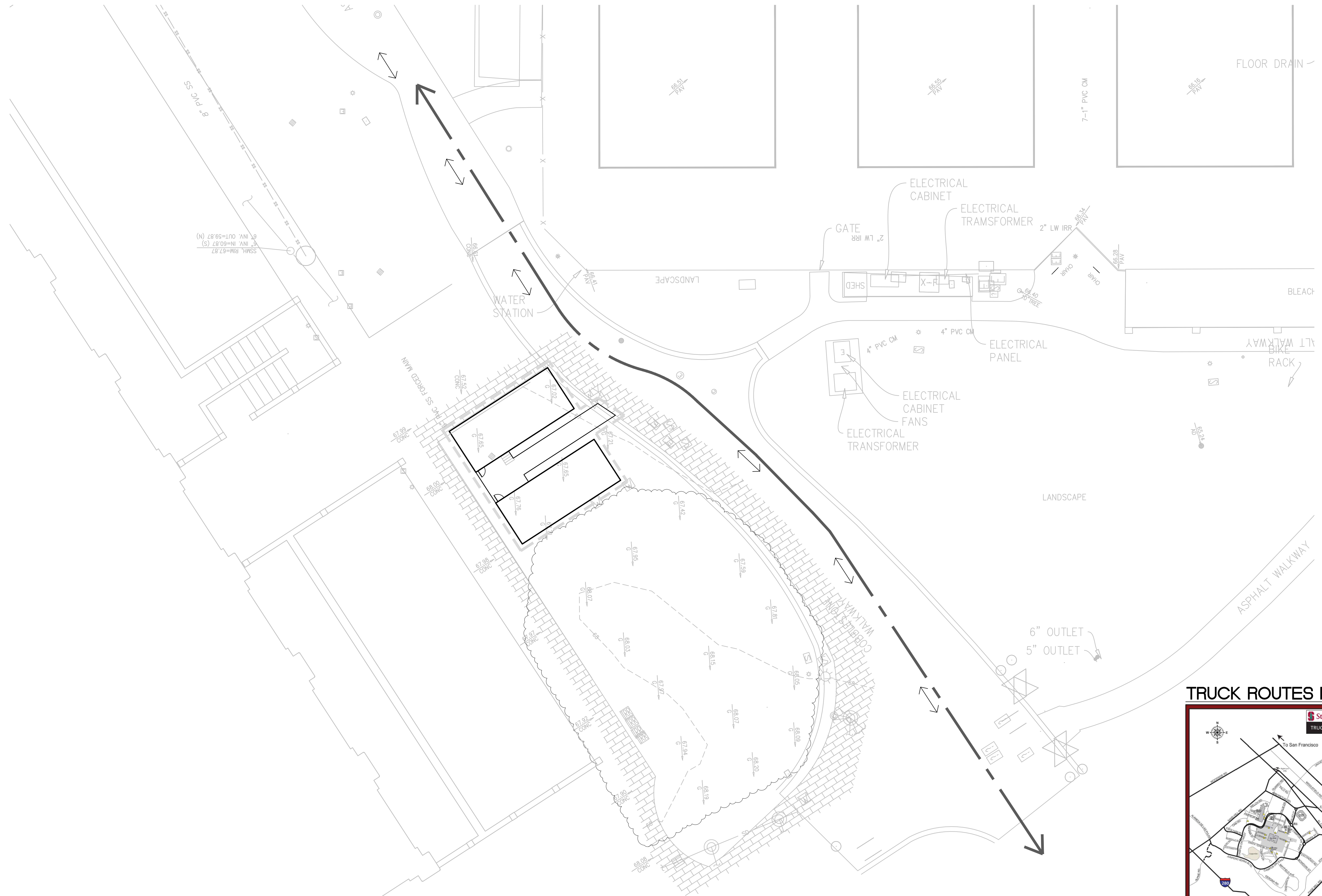
EAST CAMPUS TENNIS SURGE TRAILERS

STANFORD CALIFORNIA

STORMWATER MANAGEMENT PLAN

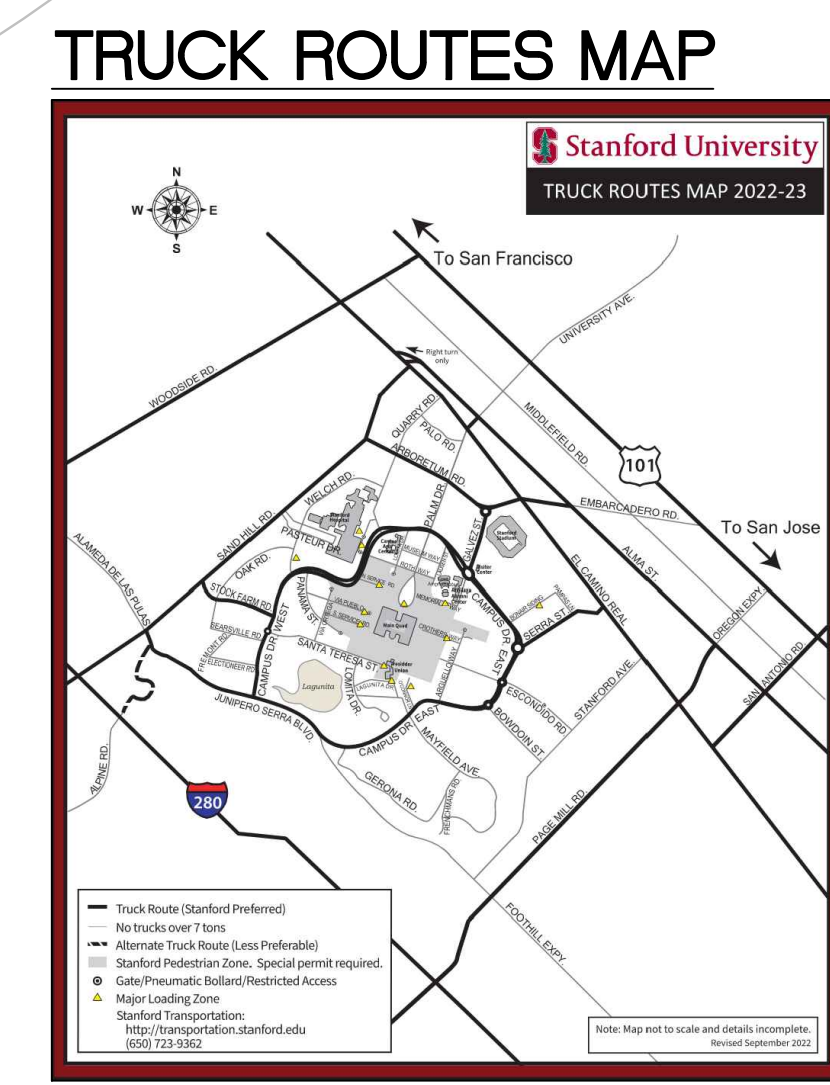
SHEET
C-6.0
9 OF 12 SHEETS

NO PART OF THIS DOCUMENT MAY BE REPRODUCED IN ANY FORM INCLUDING PHOTOCOPY, RECORDING OR ANY INFORMATION RETRIEVABLE AND STORAGE SYSTEM, WITHOUT PERMISSION IN WRITING FROM SANDIS.



- LEGEND:**
- CONSTRUCTION/FIRE TRUCK ACCESS ROUTES
 - EXISTING FIRE HYDRANT
 - PEDESTRIAN PATH OF TRAVEL
 - LIMIT OF WORK

- CONSTRUCTION NOTES:**
1. CONSTRUCTION DELIVERY TIMES / ROUTES
 - A. CONSTRUCTION MATERIALS AND FILL DIRT DELIVERED FROM OFF CAMPUS SHALL NOT BE DELIVERED BETWEEN THE HOURS OF 7:00 AM AND 9:00 AM AND 4:00 PM TO 6:00 PM ON WEEKDAYS. CONSTRUCTION MATERIAL DELIVERY SHALL NOT RESULT IN REDUCTION IN ON-STREET PARKING; REDUCTION IN PEDESTRIAN, BICYCLE, AND PUBLIC TRANSIT ACCESS; USE OF NON-TRUCK ROUTES BY CONSTRUCTION TRAFFIC; DAMAGE TO ROADWAYS; AND INTERFERENCE WITH SPECIAL EVENTS.
 - B. TRUCKS BRINGING IN FILL DIRT AND BUILDING MATERIALS FOR THE PROJECT FROM OFF-SITE SHALL BE REQUIRED TO USE TRUCK ROUTES SHOWN ON FIGURE 3 OF THE INITIAL STUDY AS DESIGNATED BY THE CITIES OF PALO ALTO AND MENLO PARK.
 - C. TRUCKS EXPORTING/ IMPORTING DIRT AND BUILDING MATERIALS FOR THE PROJECT SHALL USE APPROVED TRUCK ROUTES SHOWN IN THE 200 CUP, AS DESIGNATED BY THE CITIES OF PALO ALTO AND MENLO PARK.
 2. NOISE CONTROL
CONSTRUCTION PRACTICES SHALL COMPLY WITH THE REQUIREMENTS OF THE COUNTY OF SANTA CLARA NOISE CONTROL ORDINANCE AND ARE TO BE MONITORED BY THE GENERAL CONTRACTOR THROUGHOUT THE CONSTRUCTION PROCESS. THE SUP REQUIRES THE FOLLOWING MEASURES TO REDUCE OPERATIONAL NOISE DURING CONSTRUCTION.
 - A. MECHANICAL EQUIPMENT WITHIN 50 FEET OF A RESIDENCE SHALL BE ACOUSTICALLY ENGINEERED.
 - B. THE BUILDING DESIGN SHALL INCORPORATE DESIGN MEASURES TO LOCATE NOISE SOURCES SUCH AS LOADING ZONES, TRASH BINS AND MECHANICAL EQUIPMENT AS FAR AWAY FROM NOISE SENSITIVE RECEPTORS AS POSSIBLE.
 - C. ALL OPERATIONAL NOISE SOURCES SHALL COMPLY WITH THE COUNTY NOISE ORDINANCE.
 - D. THE CONTRACTOR SHALL COORDINATE PLANNED CLASSROOM RELOCATIONS PRIOR TO DEMOLITION OR SITE PREPARATION.
 - E. FOR CONSTRUCTION ACTIVITIES THAT WOULD AFFECT SENSITIVE NOISE RECEPTORS OFF-CAMPUS OR IN AREAS DESIGNATED CAMPUS RESIDENTIAL IN THE COMMUNITY PLAN, THE CONTRACTOR SHALL GIVE ADVANCED REGULAR NOTIFICATION OF CONSTRUCTION ACTIVITY SCHEDULED TO THE POTENTIALLY AFFECTED RESIDENTS.
 5. CONTRACTOR TO PROVIDE A MINIMUM OF ONE 2-A-20-B-C PORTABLE FIRE EXTINGUISHER WITHIN 30 FEET OF THE LOCATION WHERE HOT WORK IS PERFORMED, IN ACCORDANCE WITH CFC 2604.2.6. ADDITIONALLY, STRUCTURES UNDER CONSTRUCTION, ALTERATION OR DEMOLITION SHALL BE PROVIDED WITH NO LESS THAN ONE APPROVED PORTABLE FIRE EXTINGUISHER SIZED FOR NOT LESS THAN ORDINARY HAZARD AT EACH STAIRWAY ON ALL FLOOR LEVELS WHERE COMBUSTIBLE MATERIALS HAVE ACCUMULATED, IN EVERY STORAGE/CONSTRUCTION SHED, AND WHERE SPECIAL HAZARDS EXIST INCLUDING, BUT NOT LIMITED TO, THE STORAGE AND USE OF FLAMMABLE AND COMBUSTIBLE LIQUIDS IN ACCORDANCE WITH CFC 1415.1.
 6. CONTRACTOR SHALL RESTORE ALL AREAS ADJACENT TO THE SITE THAT HAVE BEEN IMPACTED BY CONSTRUCTION OF THIS PROJECT. AREAS IMPACTED BY CONSTRUCTION MAY INCLUDE AREAS AT THE EDGE OF SITES AND BEYOND THE LIMIT OF WORK SHOWN ON THE PROJECT PLANS.
 7. CONSTRUCTION FENCE WILL BE ADJUSTED AS NEEDED DURING CONSTRUCTION TO FACILITATE INSTALLATION OF IMPROVEMENTS. FENCE LOCATION WILL BE COORDINATED WITH STANFORD TO MAINTAIN PEDESTRIAN CIRCULATION.



BUILD ON.
SANDIS.NET

DATE: 12/20/2023
SCALE: 1"=10'
DPM PROJECT #: 5698
PROJECT No.:
220148.A

DATE: DECEMBER 20, 2023
NATHAN DICKINSON
R.C.E. NO. 79716, EXPIRES 9-30-24

No.	REVISION	DATE	BY

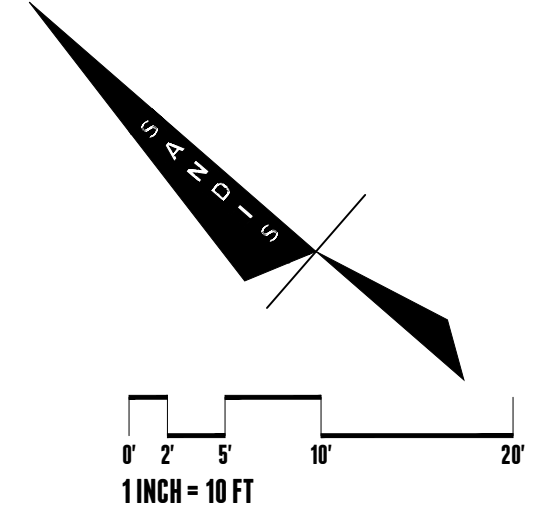
EAST CAMPUS TENNIS SURGE TRAILERS

STANFORD CALIFORNIA

CONSTRUCTION SITE LOGISTICS/SAFETY PLAN

SHEET
C-7.0
10 OF 12 SHEETS

NO PART OF THIS DOCUMENT MAY BE REPRODUCED IN ANY FORM INCLUDING PHOTOCOPY, RECORDING OR ANY INFORMATION RETRIEVABLE AND STORAGE SYSTEM, WITHOUT PERMISSION IN WRITING FROM SANDIS.



LEGEND

- EXISTING FIRE HYDRANT TO REMAIN
- FIRE ACCESS LANE
- BUILDING WITHIN 150 FEET OF FIRE ACCESS LANE PER 2016 CFC SECTION 503.1.1

NOTES

1. STANFORD SHALL BE RESPONSIBLE FOR PRUNING AND TRIMMING THE ACCESS FIRE LANE WITH A VERTICAL CLEARANCE OF 13 FEET 6 INCHES.
2. CONTRACTOR TO ENSURE THAT 20' PATHWAY IS MAINTAINED AT ALL TIMES DURING CONSTRUCTION FOR FIRE ACCESS. CONSTRUCTION GATE OR ANY OTHER CONSTRUCTION ACTIVITY CANNOT ENCROACH INTO PATHWAY WITHOUT A TEMPORARY PATHWAY ESTABLISHED TO MAINTAIN THE 20'.
3. THE EMERGENCY ACCESS SHALL MAINTAIN A 20 FT MIN. WIDTH UNDER ALL WEATHER CONDITIONS CAPABLE OF SUPPORTING UP TO 75,000 LBS.

FIRE HYDRANT NOTES

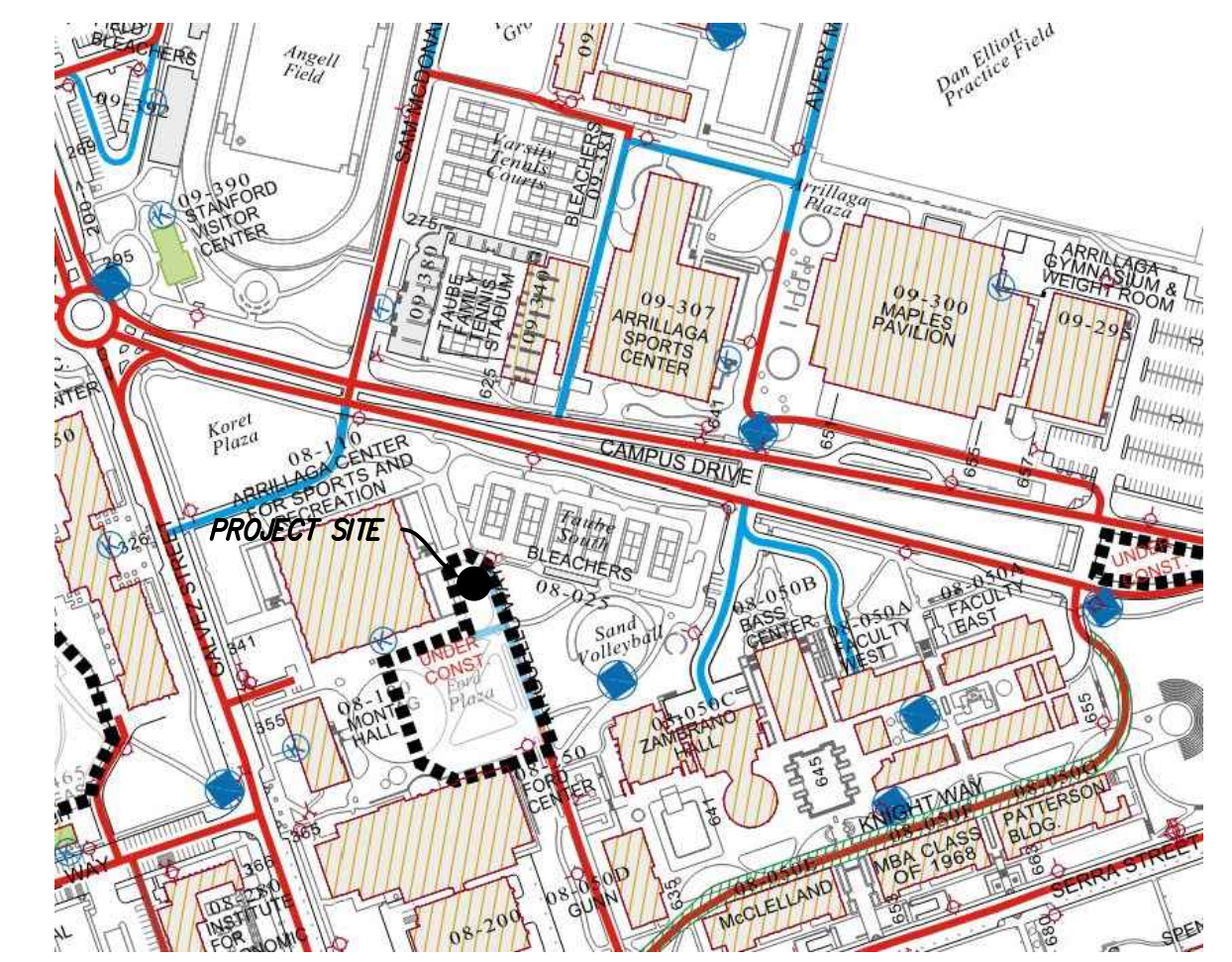
- ALL FIRE HYDRANTS SHALL BE WET BARREL STANDARD STEAMER TYPE WITH 1-4 1/2" (114.3 MM) AND 2-2 1/2" (63.5 MM) OUTLETS.
1. "FLOW DURATION" MAY IMPACT NUMBER OF REQUIRED FIRE HYDRANTS.
 2. FIRE HYDRANTS AND FIRE APPLIANCES (FIRE DEPARTMENT CONNECTIONS AND POST INDICATOR VALVES) SHALL BE CLEARLY ACCESSIBLE AND FREE FROM OBSTRUCTION.

FIRE PROTECTION NOTES

1. FIRE APPARATUS ROADWAYS, INCLUDING PUBLIC OR PRIVATE STREETS OR ROADS USED FOR VEHICLE ACCESS SHALL BE INSTALLED AND IN SERVICE PRIOR TO CONSTRUCTION.
2. FIRE APPARATUS ROADWAYS, INCLUDING PUBLIC AND PRIVATE STREETS AND IN SOME CASES DRIVEWAYS USED FOR VEHICLE ACCESS, SHALL BE CAPABLE OF SUPPORTING THE IMPOSED WEIGHT OF A 75,000 POUND (34,050 KG) FIRE APPARATUS AND SHALL BE PROVIDED WITH AN ALL WEATHER DRIVING SURFACE. ONLY PAVED OR CONCRETE SURFACES ARE CONSIDERED TO BE ALL WEATHER DRIVING SURFACES. CFC 2016, APPENDIX D.
3. FIRE PROTECTION WATER SERVING ALL HYDRANTS SHALL BE PROVIDED AS SOON AS COMBUSTIBLE MATERIAL ARRIVES ON SITE.
4. PRIOR TO COMBUSTIBLE MATERIAL ARRIVING ON THE SITE, CONTACT THE MENLO PARK FIRE PROTECTION DISTRICT TO SCHEDULE AN INSPECTION OF ROADWAYS AND FIRE HYDRANTS. CFC 2016.
5. FIRE HYDRANTS AND FIRE APPLIANCES (FIRE DEPARTMENT CONNECTIONS AND POST INDICATOR VALVES) SHALL BE CLEARLY ACCESSIBLE AND FREE FROM OBSTRUCTION.
6. SIGNAGE FOR FIRE DEPARTMENT CONNECTION (FDC), POST-INDICATOR VALVE (PIV), BACKFLOW PREVENTER DEVICE SHALL HAVE PERMANENT, IMBEDDED SIGN ATTACHED WHICH STATES ADDRESS SERVED AND SHALL TO BE SECURED TO VALVE OR CONNECTION.

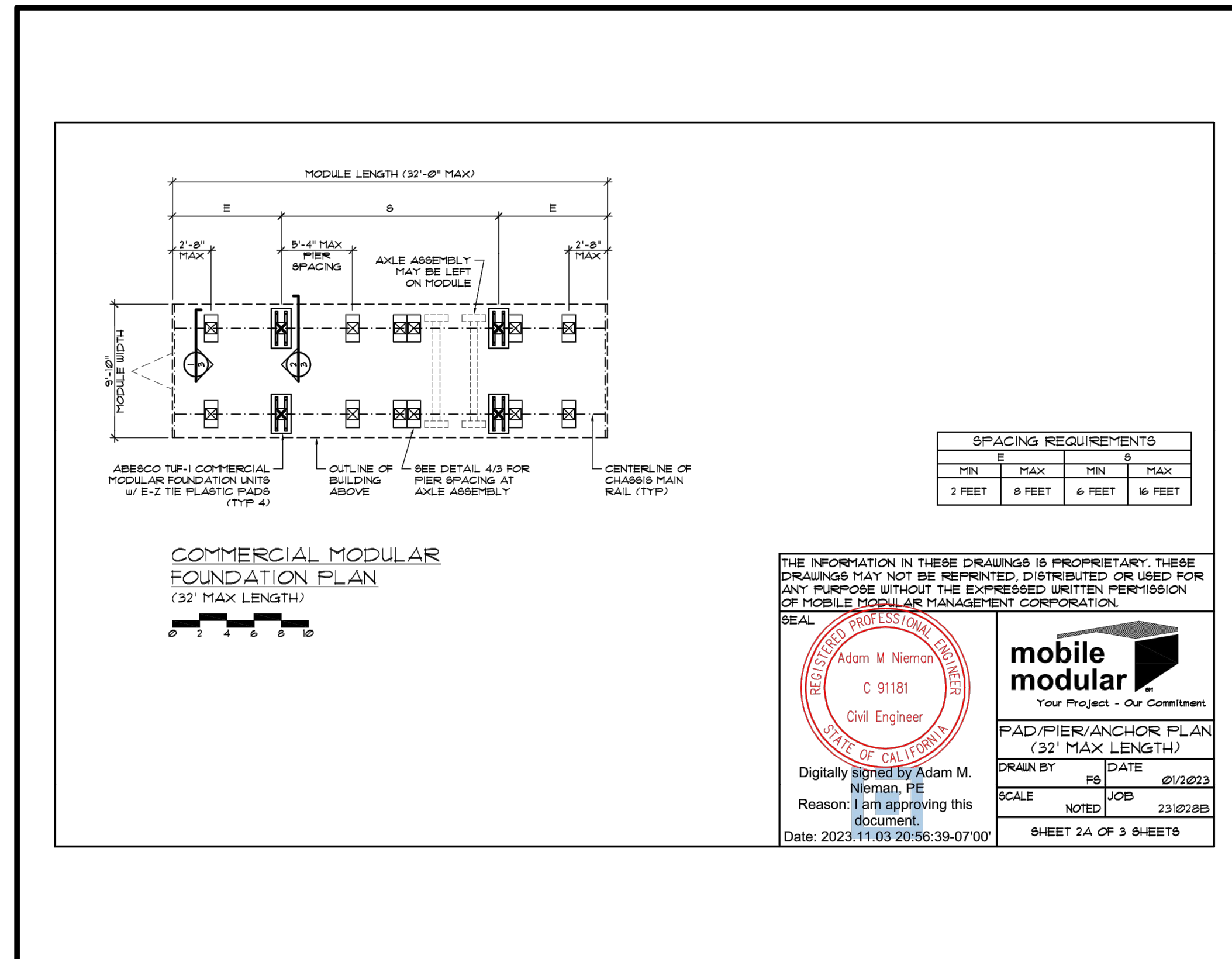
FIRE ACCESS MAP

- Primary Access
- Secondary Access

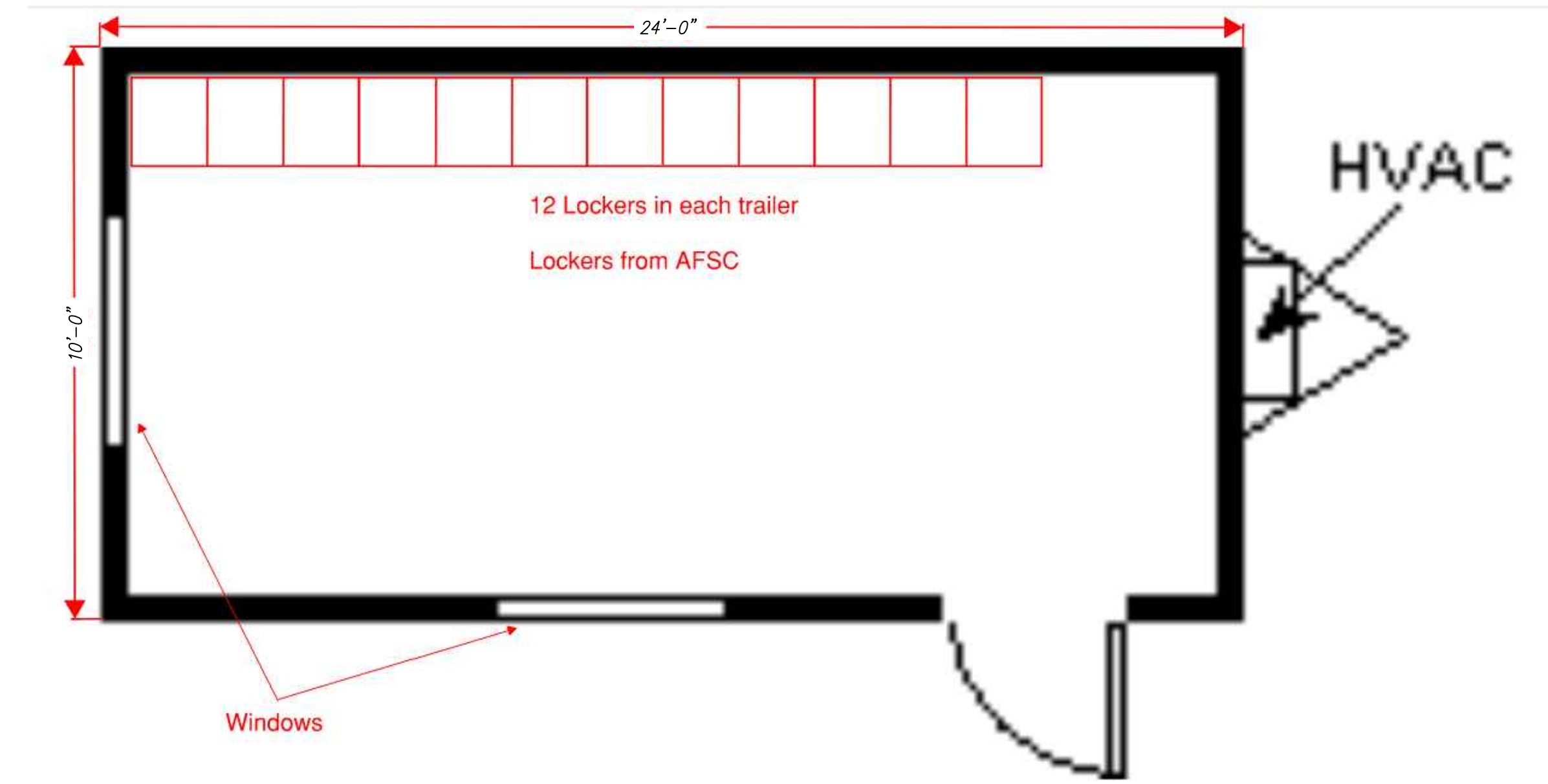


	DATE: 12/20/2023 SCALE: 1"=10' DPM PROJECT #: 5698 PROJECT No.: 220148.A	DATE: DECEMBER 20, 2023 NATHAN DICKINSON R.C.E. NO. 79716, EXPIRES 9-30-24	<table border="1" style="width: 100%; border-collapse: collapse;"> <thead> <tr> <th style="width: 5%;">No.</th> <th style="width: 40%;">REVISION</th> <th style="width: 20%;">DATE</th> <th style="width: 35%;">BY</th> </tr> </thead> <tbody> <tr> <td> </td> <td> </td> <td> </td> <td> </td> </tr> </tbody> </table>	No.	REVISION	DATE	BY					EAST CAMPUS TENNIS SURGE TRAILERS	FIRE ACCESS PLAN	SHEET C-8.0 11 OF 12 SHEETS
	No.	REVISION	DATE	BY										
SANDIS BUILD ON. SANDIS.NET	STANFORD CALIFORNIA	File: S:\220148.A\4_ENGINEERING\2_PLAN SETS\3_SHEET SET\ONSITE\ASA (EAST CAMPUS)\C-8.0 FIRE ACCESS.dwg Date: Dec 21, 2023 - 1:40 PM	Copyright ©2023 by Sandis											

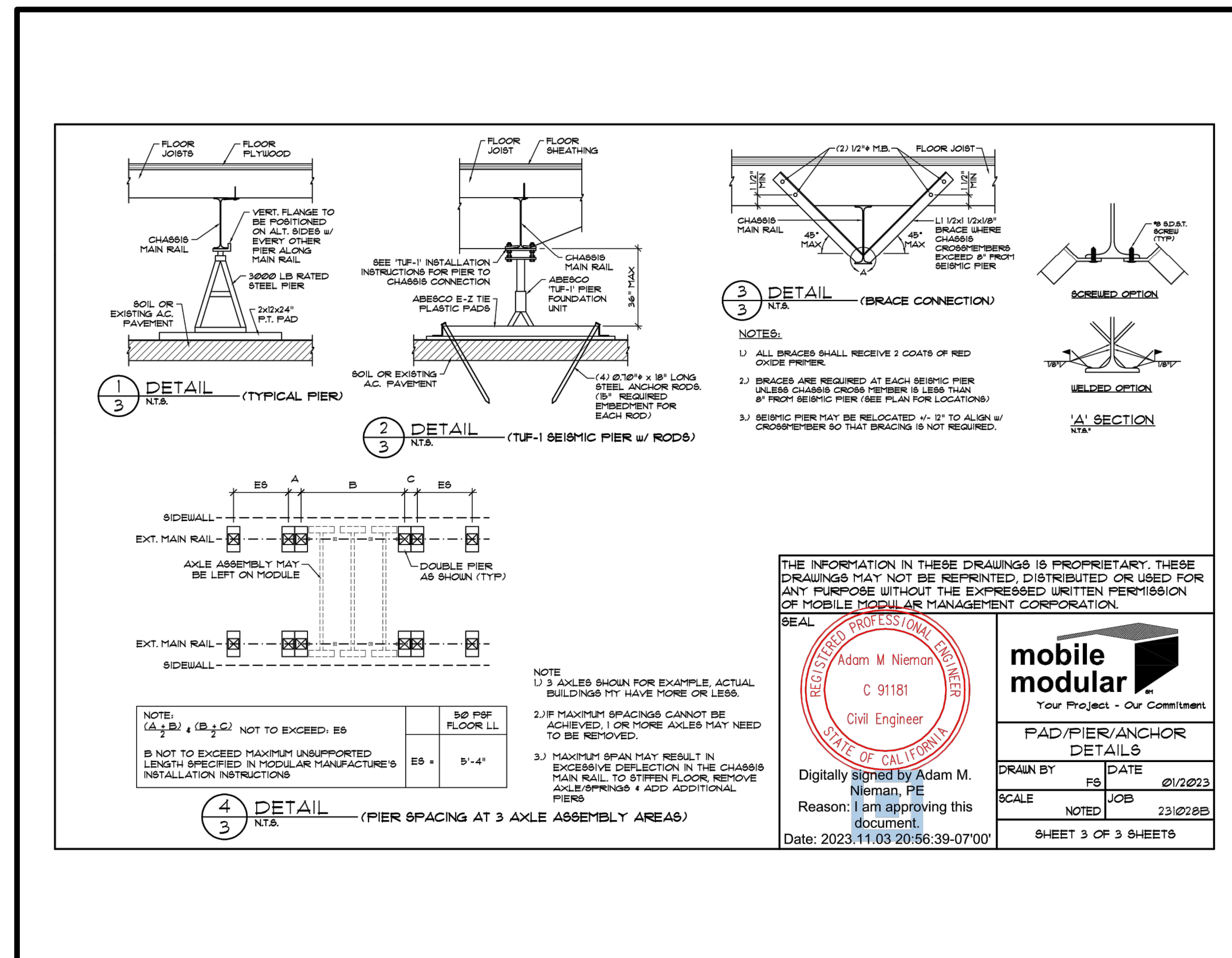
NO PART OF THIS DOCUMENT MAY BE REPRODUCED IN ANY FORM INCLUDING PHOTOCOPY, RECORDING OR ANY INFORMATION RETRIEVABLE AND STORAGE SYSTEM, WITHOUT PERMISSION IN WRITING FROM SANDIS.



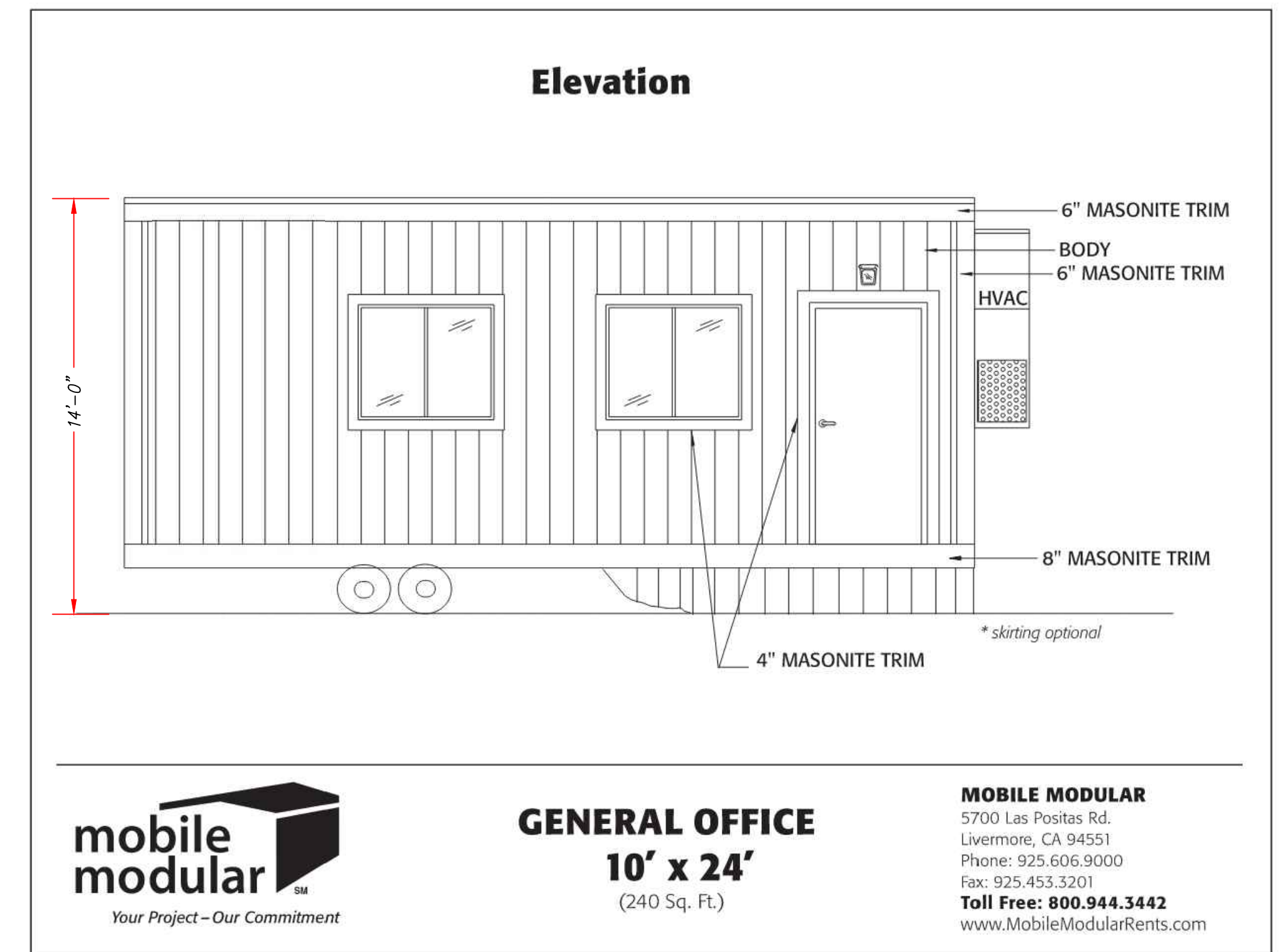
TRAILER FOUNDATION PLAN
NTS



TRAILER FLOOR PLAN (TYP.)
NTS



TRAILER FOUNDATION PLAN
NTS



TRAILER ELEVATION (TYP.)
NTS



BUILD ON.
SANDIS.NET

DATE: 12/20/2023
SCALE: N.T.S.
DPM PROJECT #: 5698
PROJECT No.: 220148.A
DATE: DECEMBER 20, 2023
NATHAN DICKINSON
R.C.E. NO. 79716, EXPIRES 9-30-24

No.	REVISION	DATE	BY

EAST CAMPUS TENNIS SURGE TRAILERS

STANFORD

CALIFORNIA

ELEVATION, FLOOR, AND FOUNDATION PLAN

SHEET

C-9.0

12 OF 12 SHEETS