

1 SITE PLAN

SCALE: 1" = 30'-0"

LEGEND

- AC PAVEMENT
- CONCRETE WALK/PAD
- MISC. CONCRETE
- STRUCTURES
- FIRE LANE
- DECOMPOSED GRANITE
- LANDSCAPE
- HYDRANT WATER LINE
- PATH OF TRAVEL

PROJECT INFORMATION:

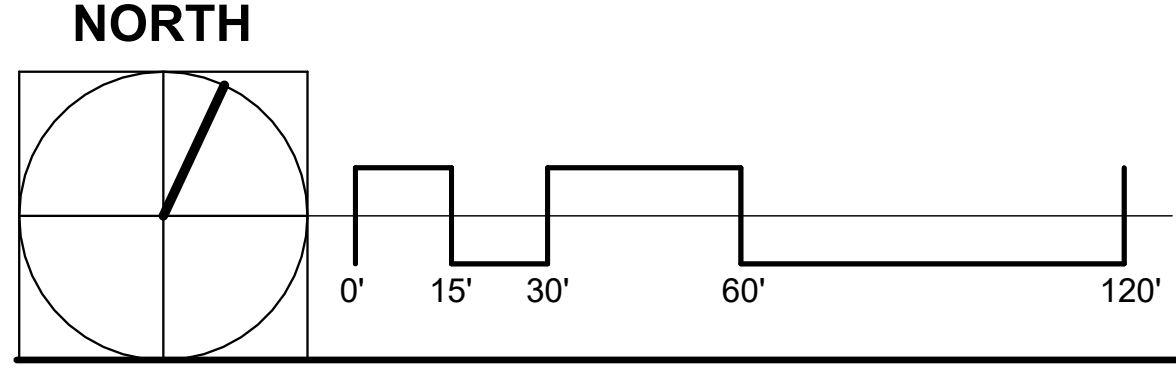
- APN 779-13-031 & 032
- PRESENT USE: VACANT AND RESIDENTIAL
- PROPOSED USE: COMMERCIAL
- ZONING: RR-5AC-SM
- AREA: 9.76 AC (426,146 SF)
- BUILDING: 96,699 SF
- ASPHALT/ CONCRETE HARDSCAPE SF: 271,975 SF
- % OF LOT COVERAGE: %86.7

CODE ANALYSIS:

- FIRE SPRINKLERS REQUIRED IN GROUP S-1 WHEN FIRE AREA EXCEEDS 12,000 SQ. (CFC 903.2.9)
- ALLOWABLE AREA FOR A TYPE II-B NON-SPRINKLERED BUILDING = 17,500 SQ (CBC TABLE 506.2)
- FIRE-RESISTANCE RATING REQUIREMENT FOR EXTERIOR WALLS BASED ON FIRE SEPARATION DISTANCE = 0 (CBC TABLE 705.5)
- FIRE FLOW REQUIRED PER MINUTE: 2,000 GPM FOR LARGEST FIRE AREA OF 9,000 SF (CFC BB105.1)
- # OF HYDRANTS REQUIRED: 2
- SPACING BETWEEN HYDRANTS: 450 FT MAX.
- MAX. DISTANCE FROM STREET OR ROAD FRONTAGE: 225 FT MAX. (CFC C102.1)

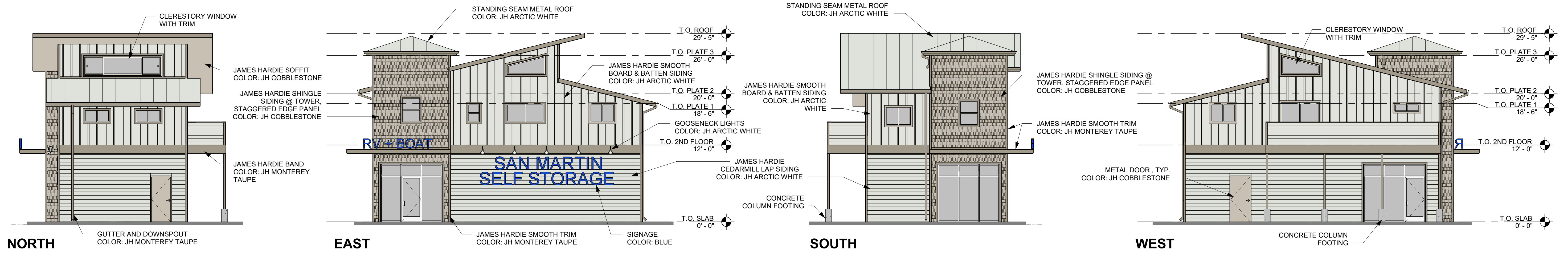
TOTAL STORAGE UNITS:

INTERIOR DF	GROUND LOADED	OPEN RV STORAGE	GUEST PARKING
60 UNITS - 10'X10'	48 UNITS - 10'X10'	45 SPACES - 25'	ZONING REQUIRED - 21 SPACES
60 UNITS - 10'X15'	44 UNITS - 10'X15'	46 SPACES - 30'	(18 SPACES FOR STORAGE, 5
60 UNITS - 10'X20'	44 UNITS - 10'X20'	50 SPACES - 35'	SPACES FOR OFFICE)
	44 UNITS - 10'X25'	73 SPACES - 40'	PROVIDED - 23 (3 ACCESSIBLE)
	44 UNITS - 10'X30'	45 SPACES - 45'	
	40 UNITS - 12'X35'		

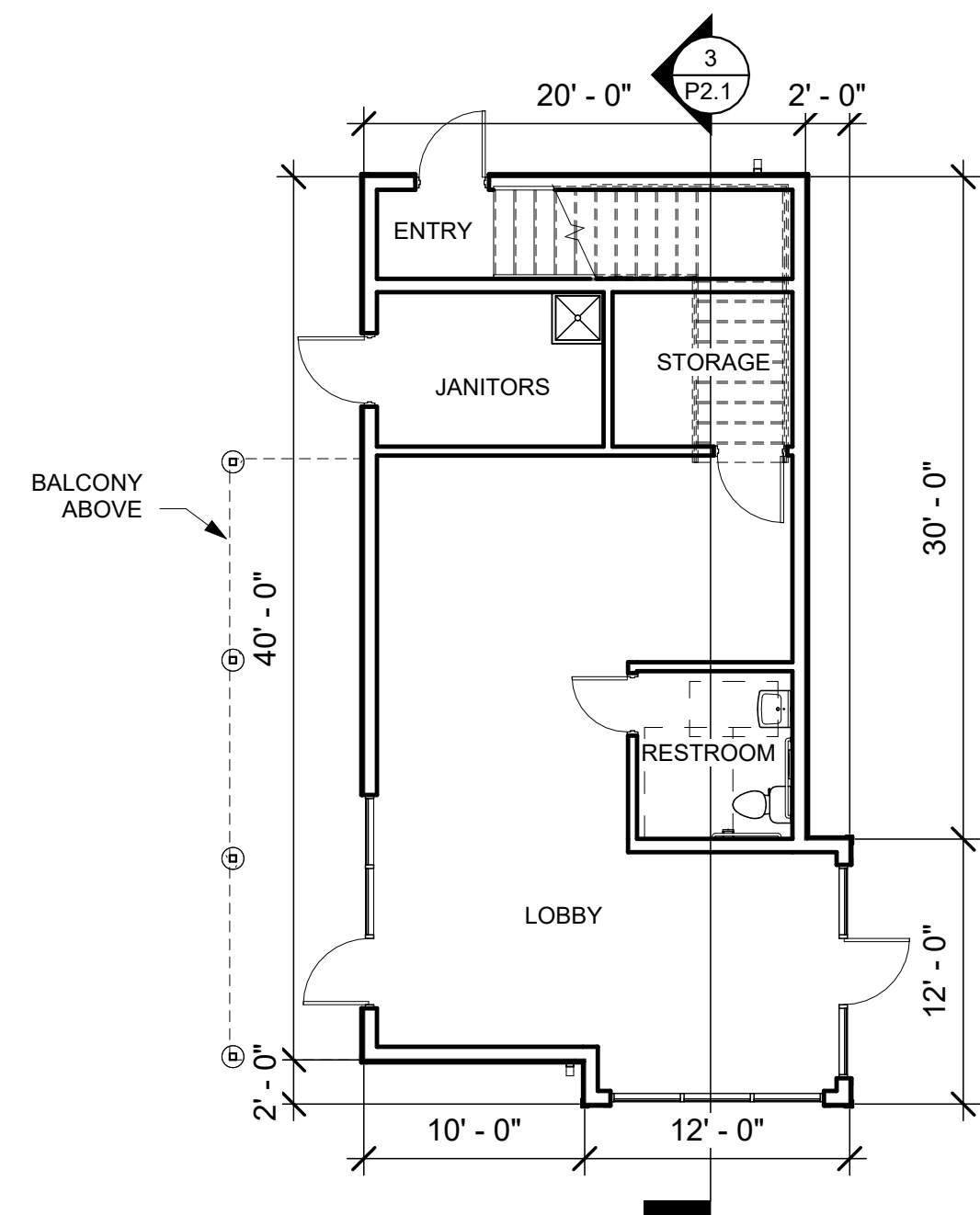


Preliminary Design For:
San Martin Storage
 12625 Monterey Rd.
 San Martin, CA 95046

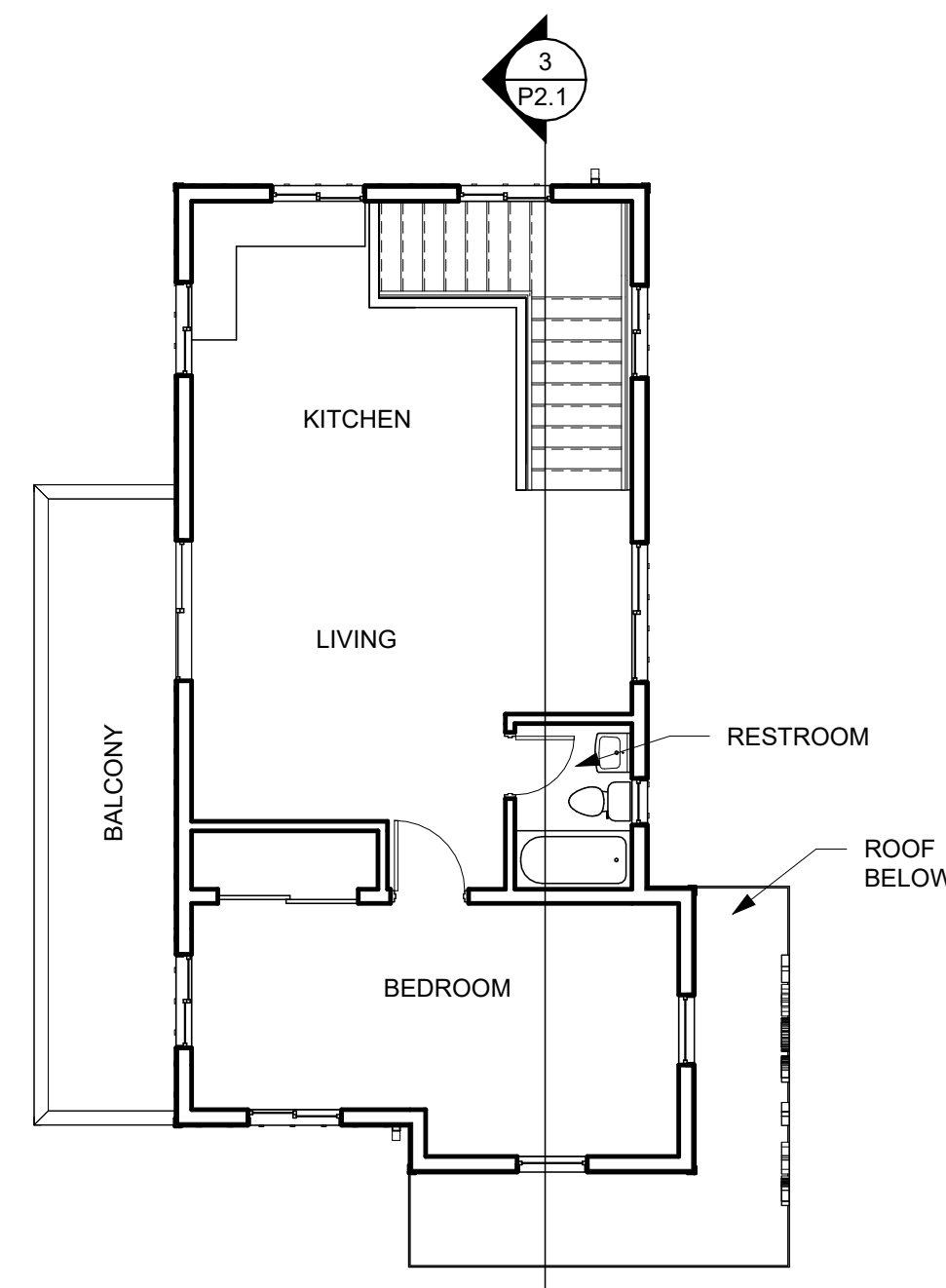




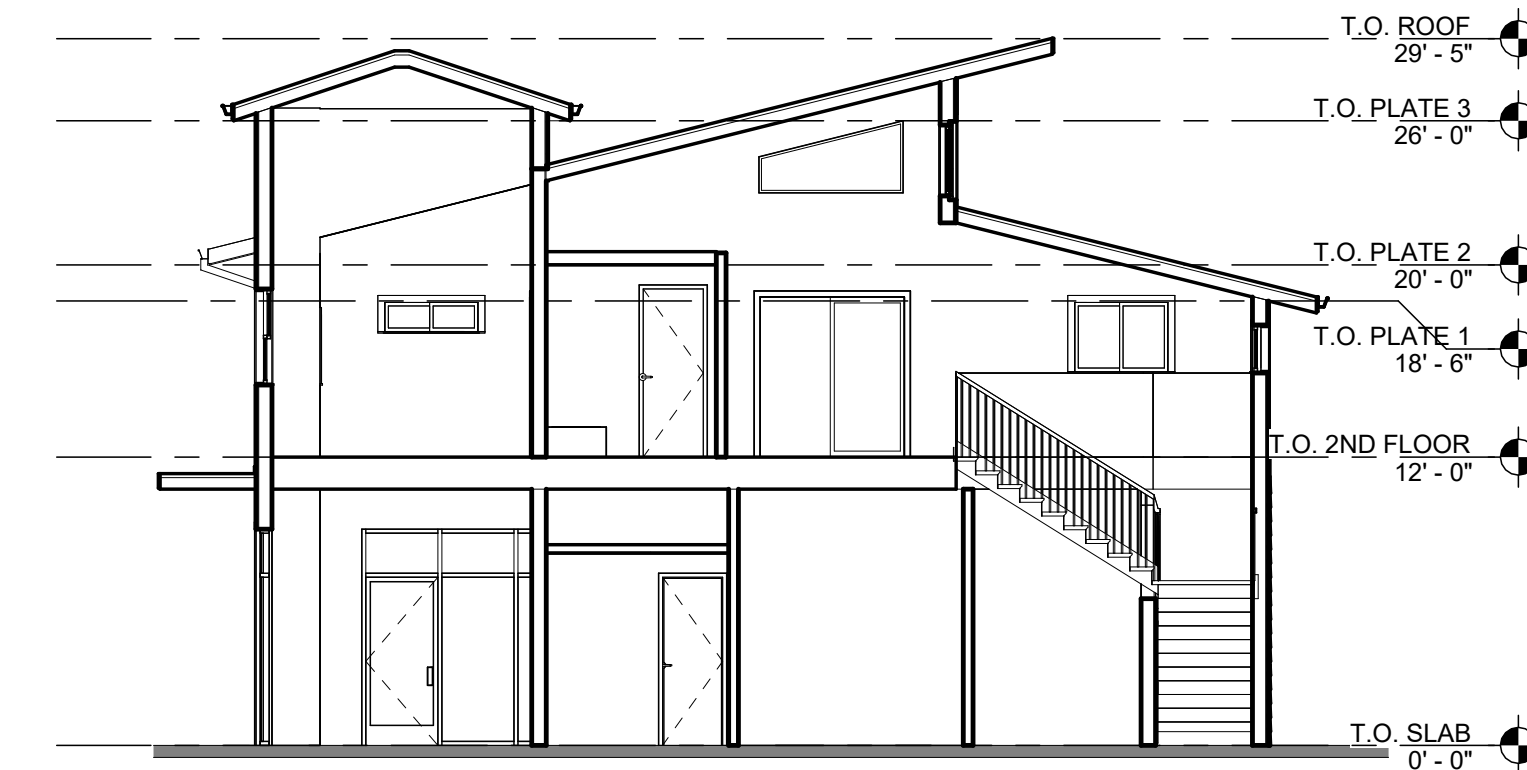
4 OFFICE/ RESIDENCE - ELEVATIONS
SCALE: 1/8" = 1'-0"



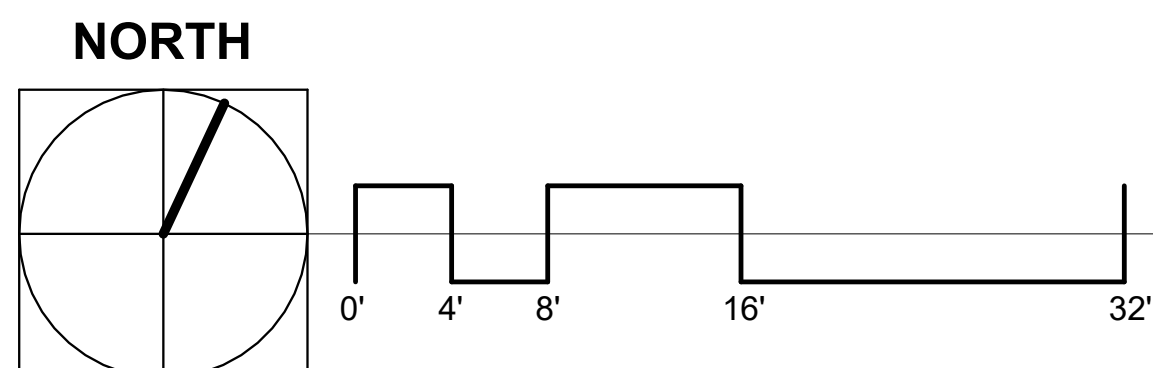
1 FLOOR PLAN
SCALE: 1/8" = 1'-0"



2 SECOND FLOOR
SCALE: 1/8" = 1'-0"



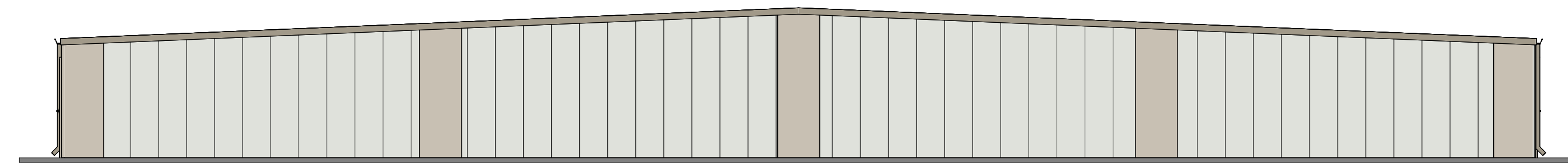
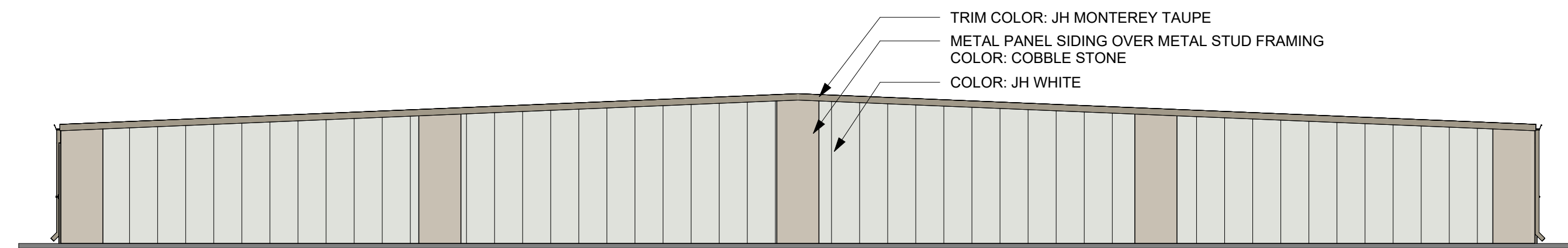
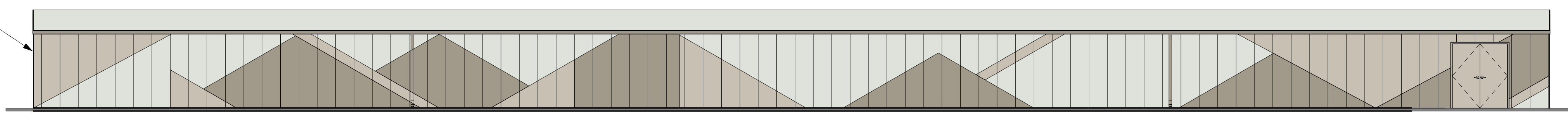
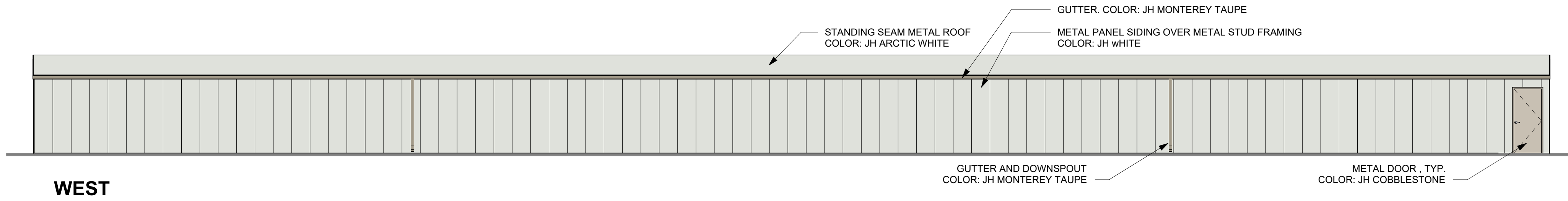
3 SECTION
SCALE: 1/8" = 1'-0"



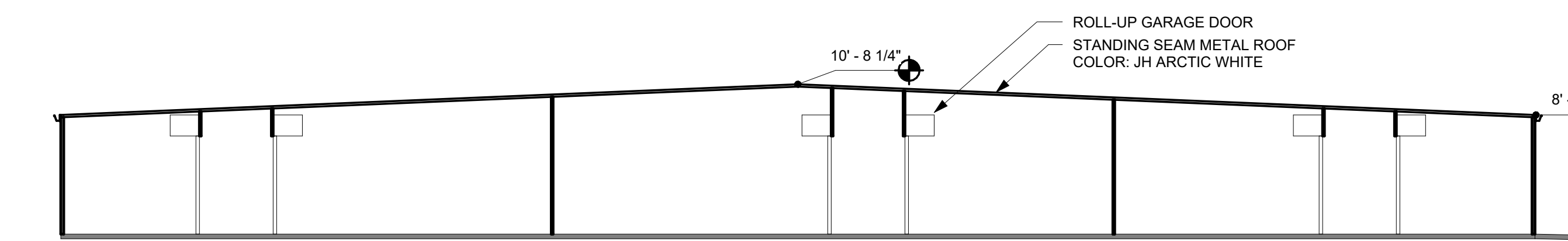
Preliminary Design For:
San Martin Storage
12625 Monterey Rd.
San Martin, CA 95046

JR /YA 21223 04/26/23

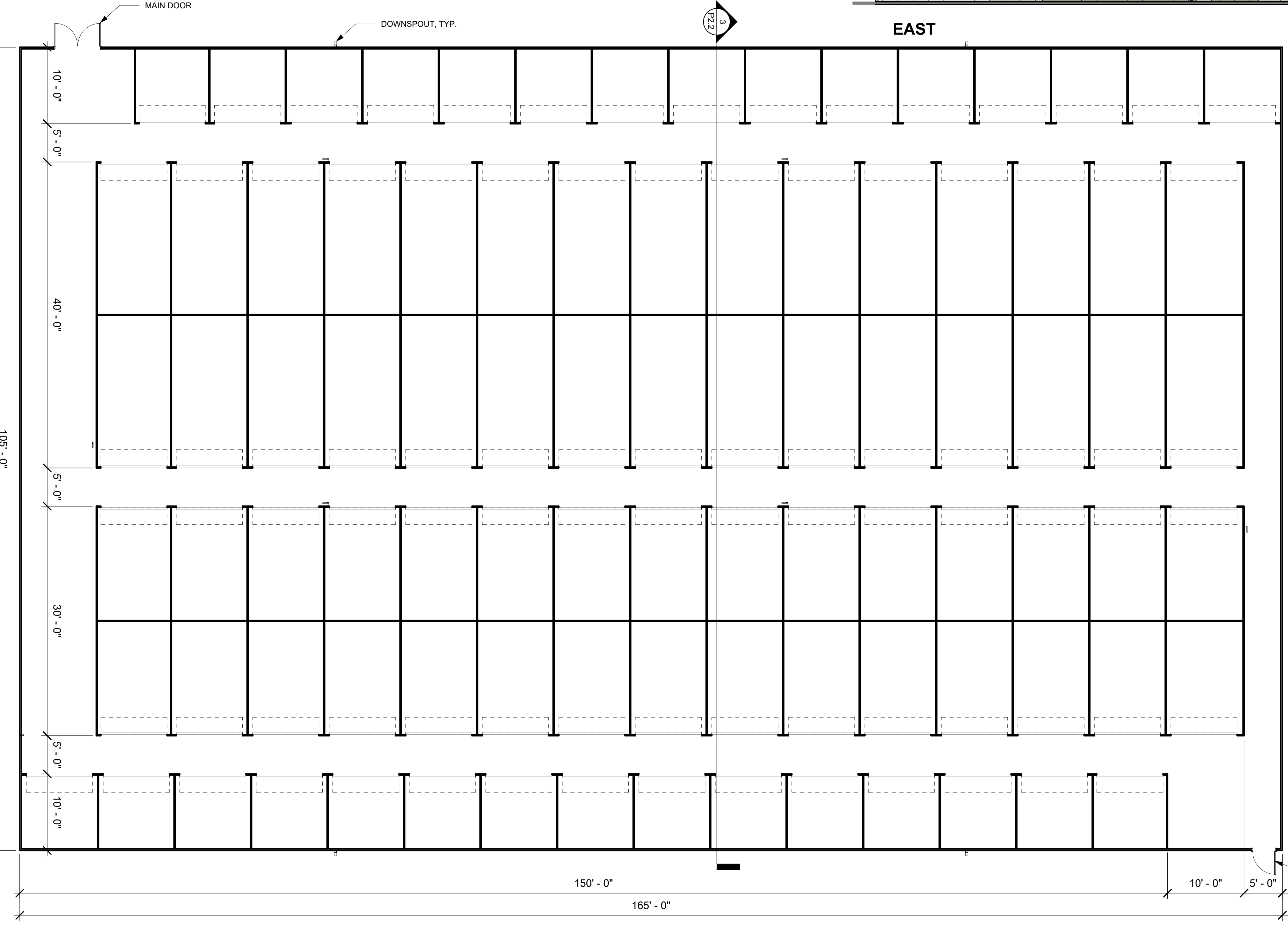




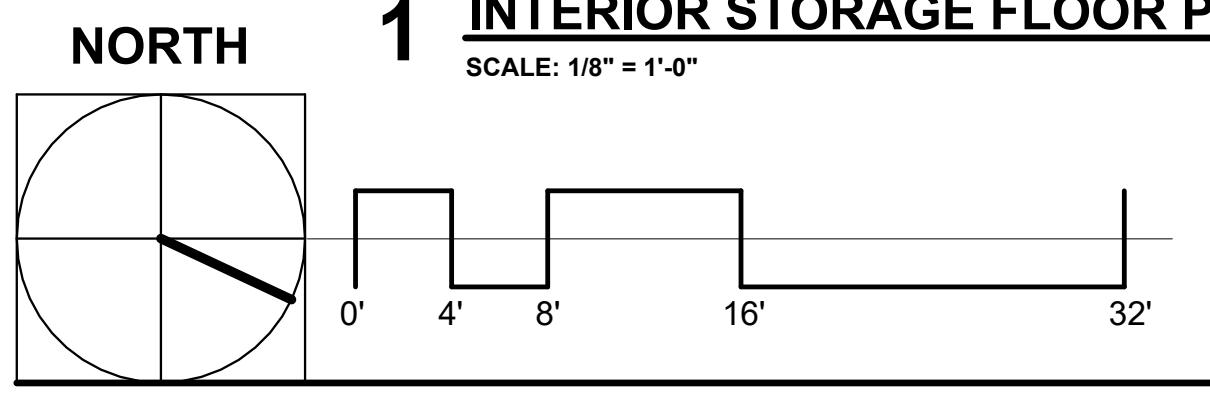
2 INTERIOR STORAGE UNITS - ELEVATIONS
SCALE: 1/8" = 1'-0" (TYPICAL OF 2)



3 SECTION
SCALE: 1/8" = 1'-0" (TYPICAL OF 2)



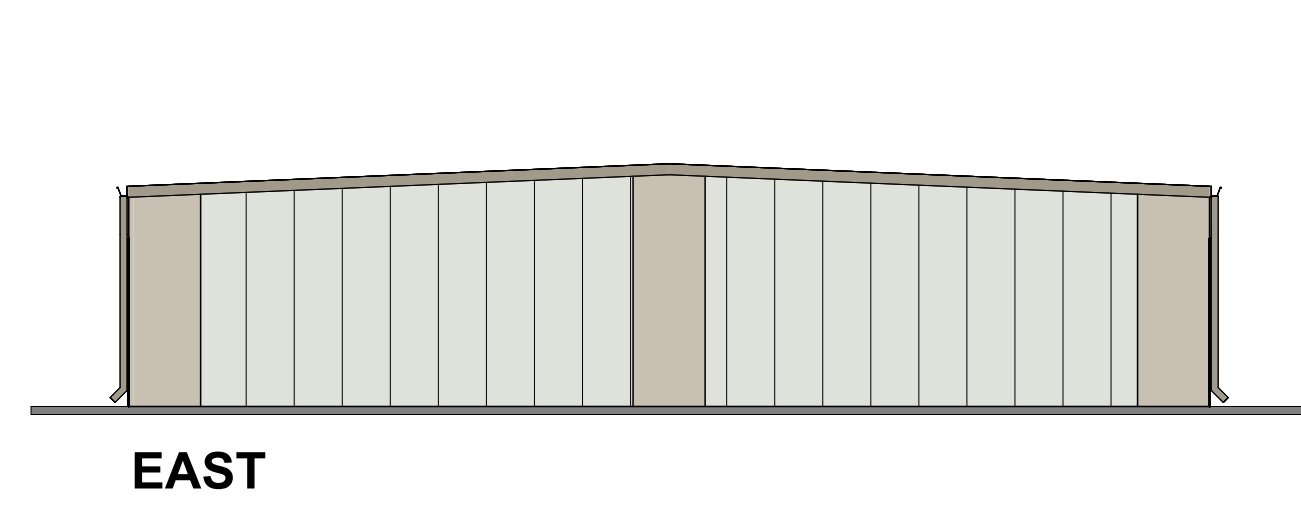
1 INTERIOR STORAGE FLOOR PLAN
SCALE: 1/8" = 1'-0" (TYPICAL OF 2)



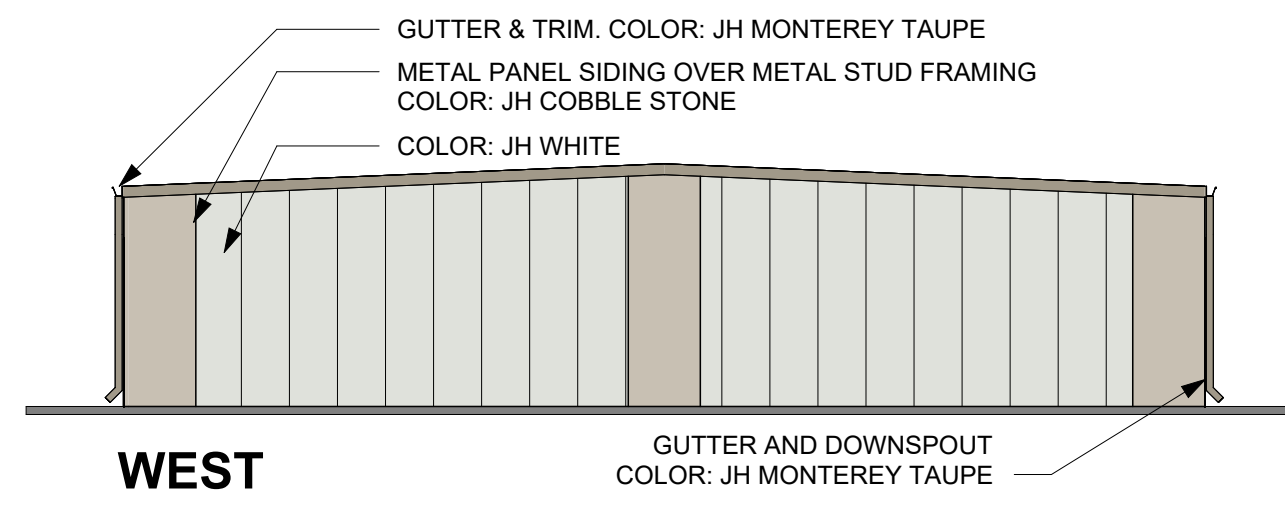
Preliminary Design For:
San Martin Storage
12625 Monterey Rd.
San Martin, CA 95046

JR /YA 21223 04/26/23





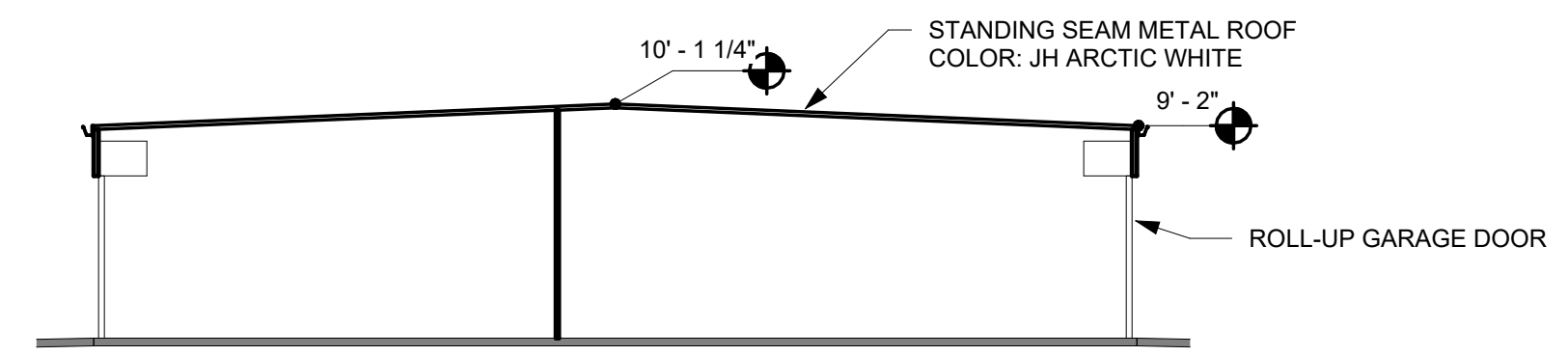
EAST



WEST

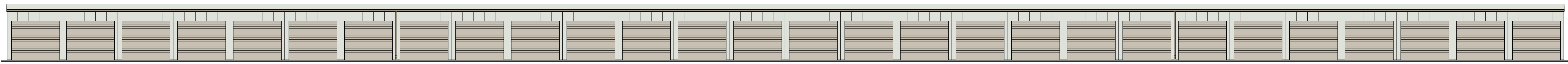
GUTTER & TRIM. COLOR: JH MONTEREY TAUPE
 METAL PANEL SIDING OVER METAL STUD FRAMING
 COLOR: JH COBBLESTONE
 COLOR: JH WHITE

GUTTER AND DOWNSPOUT
 COLOR: JH MONTEREY TAUPE

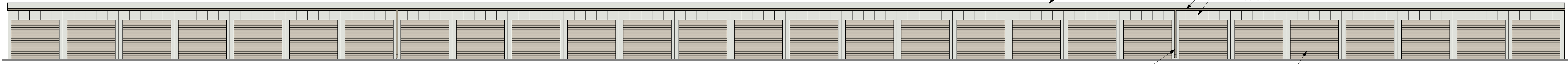


3 SECTION
 SCALE: 1/8" = 1'-0" (TYPICAL OF 5)

10' - 1 1/4"
 9' - 2"
 STANDING SEAM METAL ROOF
 COLOR: JH ARCTIC WHITE
 ROLL-UP GARAGE DOOR



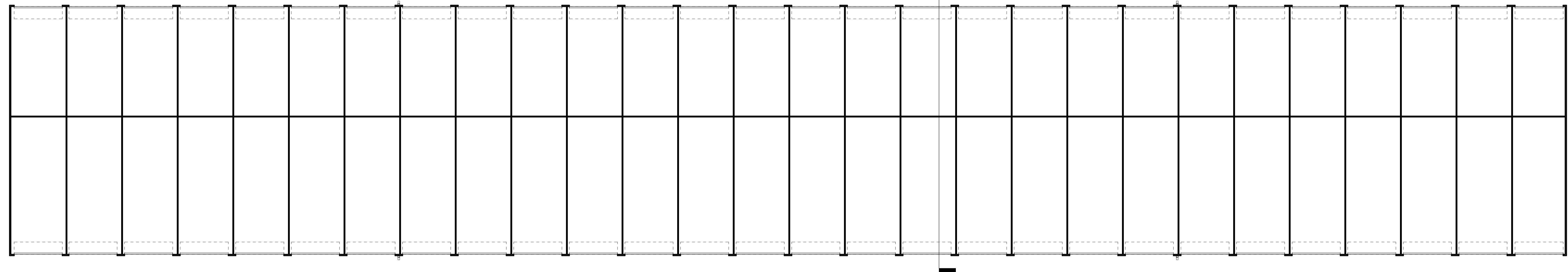
SOUTH



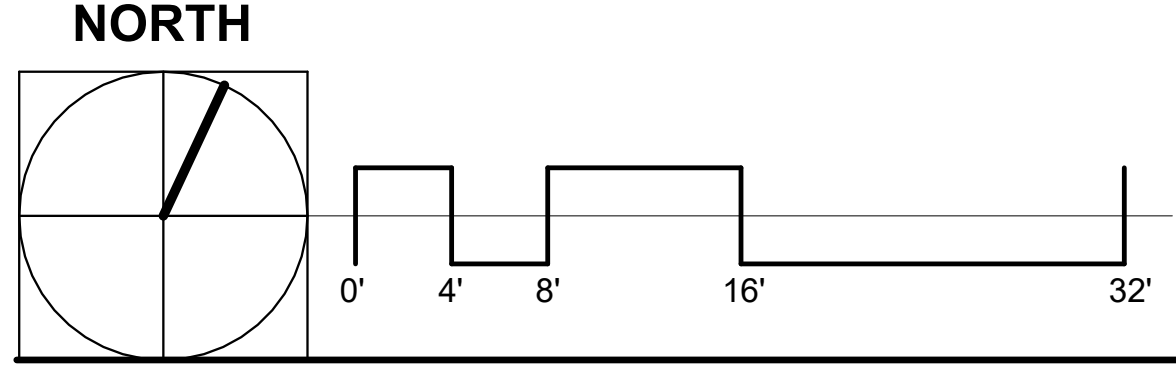
NORTH

STANDING SEAM METAL ROOF
 COLOR: JH ARCTIC WHITE
 GUTTER. COLOR: JH MONTEREY TAUPE
 METAL PANEL SIDING OVER METAL STUD FRAMING
 COLOR: JH WHITE
 GUTTER AND DOWNSPOUT
 COLOR: JH MONTEREY TAUPE
 METAL ROLL-UP DOOR, TYP.
 COLOR: JH COBBLESTONE

2 EXTERIOR STORAGE UNITS - ELEVATIONS
 SCALE: 1/4" = 1'-0" (TYPICAL OF 5)



1 EXTERIOR STORAGE FLOOR PLAN
 SCALE: 1/8" = 1'-0" (TYPICAL OF 5)



Preliminary Design For:
San Martin Storage
 12625 Monterey Rd.
 San Martin, CA 95046

JR /YA 21223 04/26/23





11 SITE ENTRANCE SOUTH
SCALE: 3" = 1'-0"



10 EYE LEVEL - SITE ENTRANCE - NORTH
SCALE: 3" = 1'-0"



9 MANAGER'S OFFICE - LOOKING SOUTH-EAST
SCALE: 3" = 1'-0"



8 MANAGER'S OFFICE - LOOKING NORTH-EAST
SCALE: 3" = 1'-0"



7 BIRD'S EYE - LOOKING MID SOUTH-WEST
SCALE: 3" = 1'-0"



6 BIRDS EYE - LOOKING SOUTH-EAST
SCALE: 3" = 1'-0"



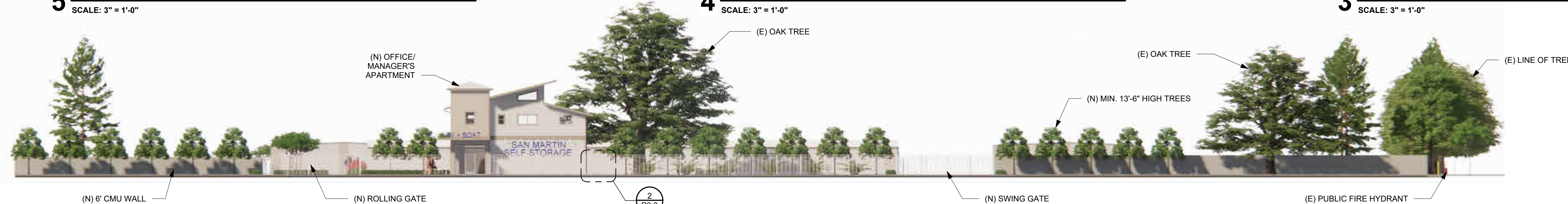
5 BIRD'S EYE - LOOKING NORTH-EAST
SCALE: 3" = 1'-0"



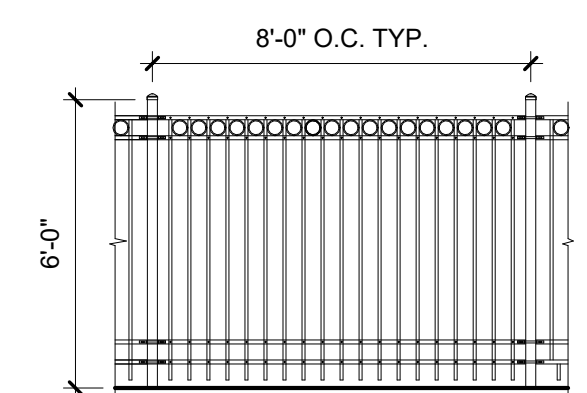
4 BIRD'S EYE - LOOKING SOUTH-WEST
SCALE: 3" = 1'-0"



3 BIRD'S EYE - LOOKING NORTH-WEST
SCALE: 3" = 1'-0"



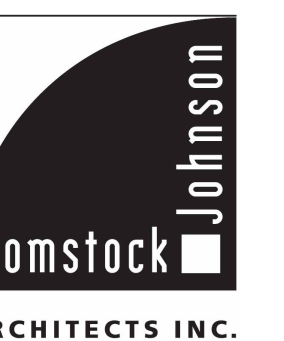
1 STREET ELEVATION
SCALE: N.T.S.

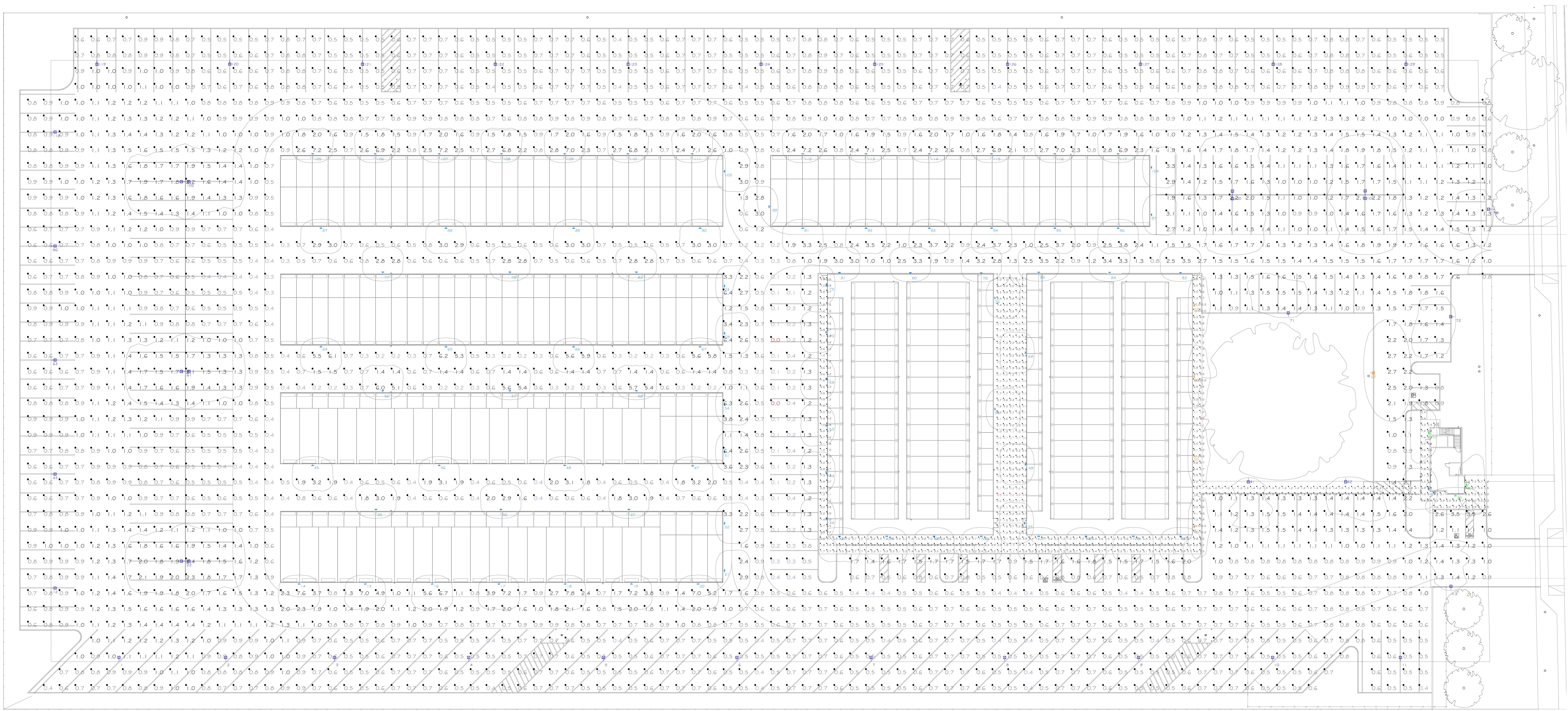


2 FENCE ELEVATION
SCALE: 1/4" = 1'-0"

Preliminary Design For:
San Martin Storage
12625 Monterey Rd.
San Martin, CA 95046

JR /YA 21223 04/26/23





LIGHTING SITE PLAN
Scale: 1 inch= 25 Ft.

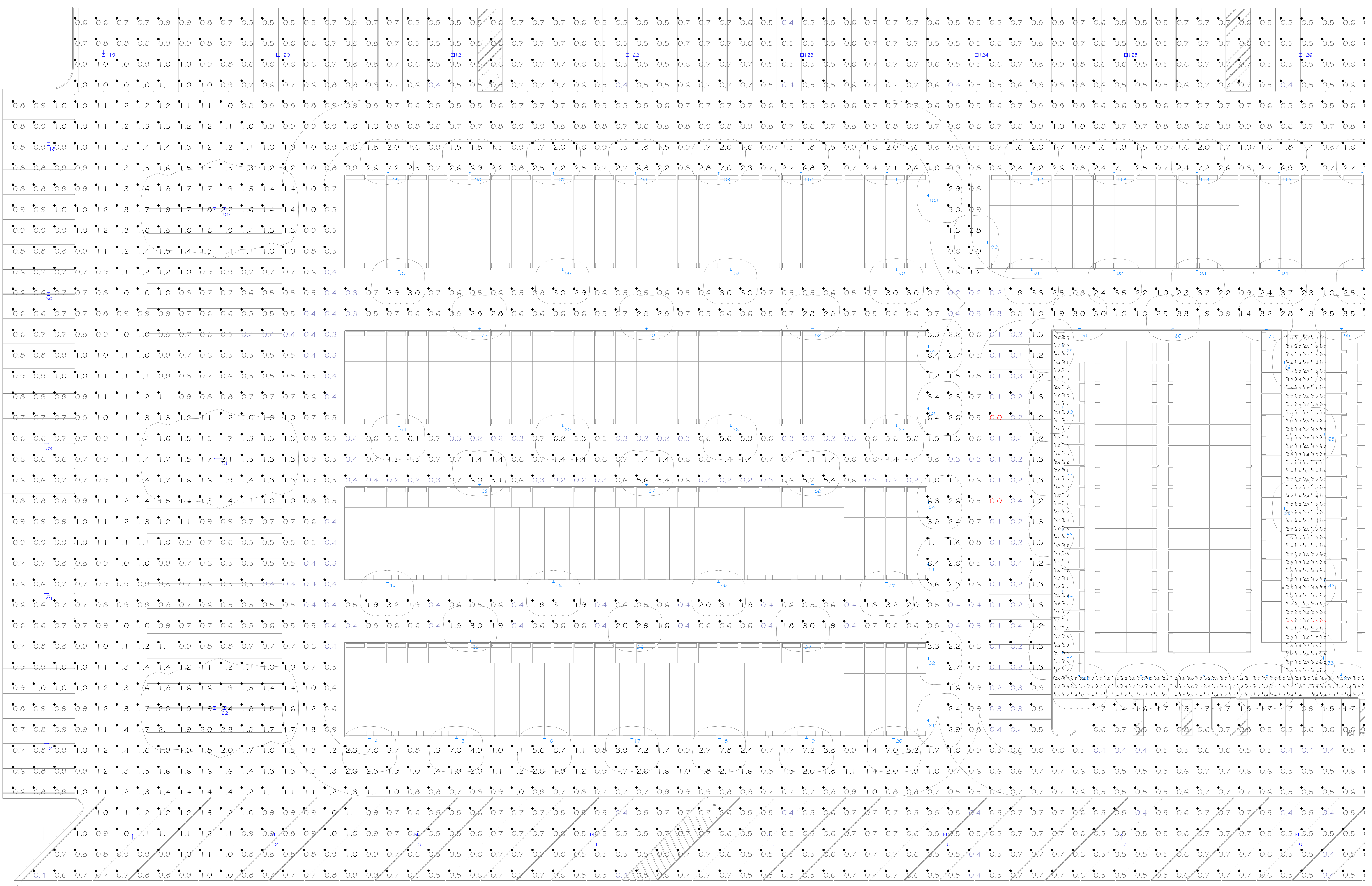
Luminaire Schedule												
Symbol	Qty	Label	Arrangement	Description	LLF	LLD	LDD	BF	Lum. Lumens	Lum. Watts	BUG Rating	Tag
	1	P2	Single	SAS-6L-U-30-T2	0.900	0.900	1.000	1.000	6322	44.2	B1-U0-G1	
	4	P3	Single	SAS-6L-U-30-T3	0.900	0.900	1.000	1.000	6301	44.2	B1-U0-G2	
	2	P4	Single	SAS-6L-U-30-T4	0.900	0.900	1.000	1.000	6234	44.2	B1-U0-G2	
	5	P4T	Back-Back	SAS-6L-U-30-T4	0.900	0.900	1.000	1.000	6234	44.2	B1-U0-G2	
	27	P5	Single	SAS-6L-U-30-T5S	0.900	0.900	1.000	1.000	6345	44.2	B3-U0-G3	
	4	W2	Single	071204	0.900	0.900	1.000	1.000	2256	26	B1-U0-G1	TOP OF FIXTURE AT 8 FT
	3	W3	Single	071206	0.900	0.900	1.000	1.000	2273	26	B1-U0-G1	TOP OF FIXTURE AT 8 FT
	83	W4	Single	071208	0.900	0.900	1.000	1.000	2149	26	B1-U0-G0	TOP OF FIXTURE OF 8 FT

Calculation Summary							
Label	CalcType	Units	Avg	Max	Min	Avg/Min	Max/Min
INTERIOR MAIN BLDG CORRIDOR	Illuminance	Fc	2.1	8.4	0.5	4.26	16.80
PATH	Illuminance	Fc	3.9	10.5	0.8	4.83	13.13
SITE	Illuminance	Fc	1.1	7.8	0.0	N.A.	N.A.

All values shown are maintained horizontal footcandle at grade level.
The lighting calculations provided in this report approximate the light levels expected within the space as defined and are based on the information provided to Cal Lighting. Please verify the data to assure the accuracy of the report. Cal Lighting is not responsible for light output of lamps and ballasts, or design variables.

LIGHTING NOTES:
ALL LIGHTS ARE AT FULL OUTPUT & 3K

OVERALL PHOTOMETRIC SITE PLAN
SAN MARTIN STORAGE
12625 MONTEREY RD.
SAN MARTIN, CA 95046



PARTIAL PHOTOMETRIC SITE PLAN
Scale: 1 inch= 17 Ft.

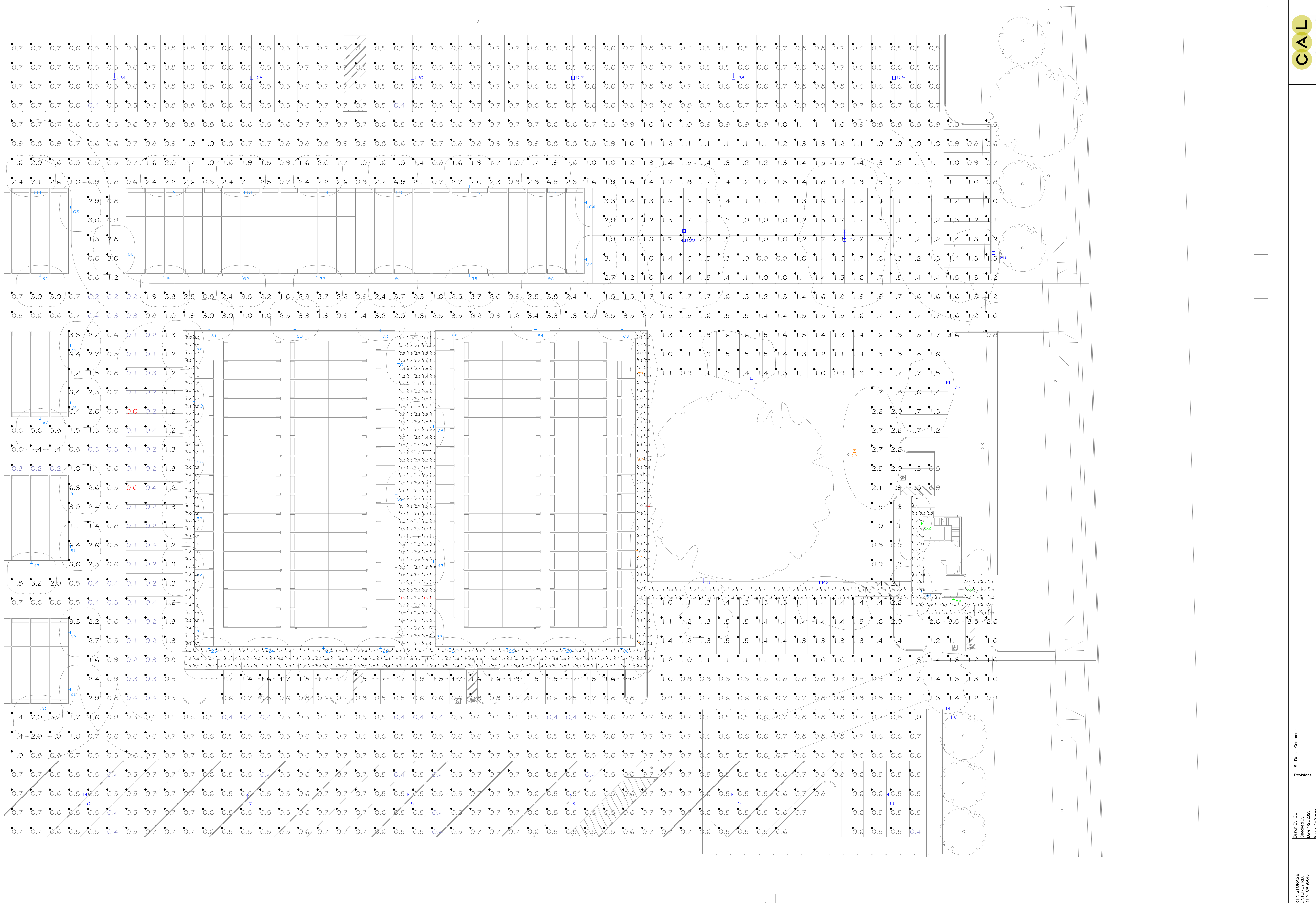
#	Date	Comments

#	Revisions

Drawn By: CL
Checked By: CL
Date: 02/20/2023
Scale: As Shown

SAN MARTIN STORAGE
12025 MONTEREY RD.
SAN MARTIN, CA 95066

CAL-PH 1.02
Page 2 of 3



PARTIAL PHOTOMETRIC SITE PLAN
Scale: 1 inch= 17 Ft.

#	Date	Comments

#	Date	Comments