

VICINITY MAP NTS

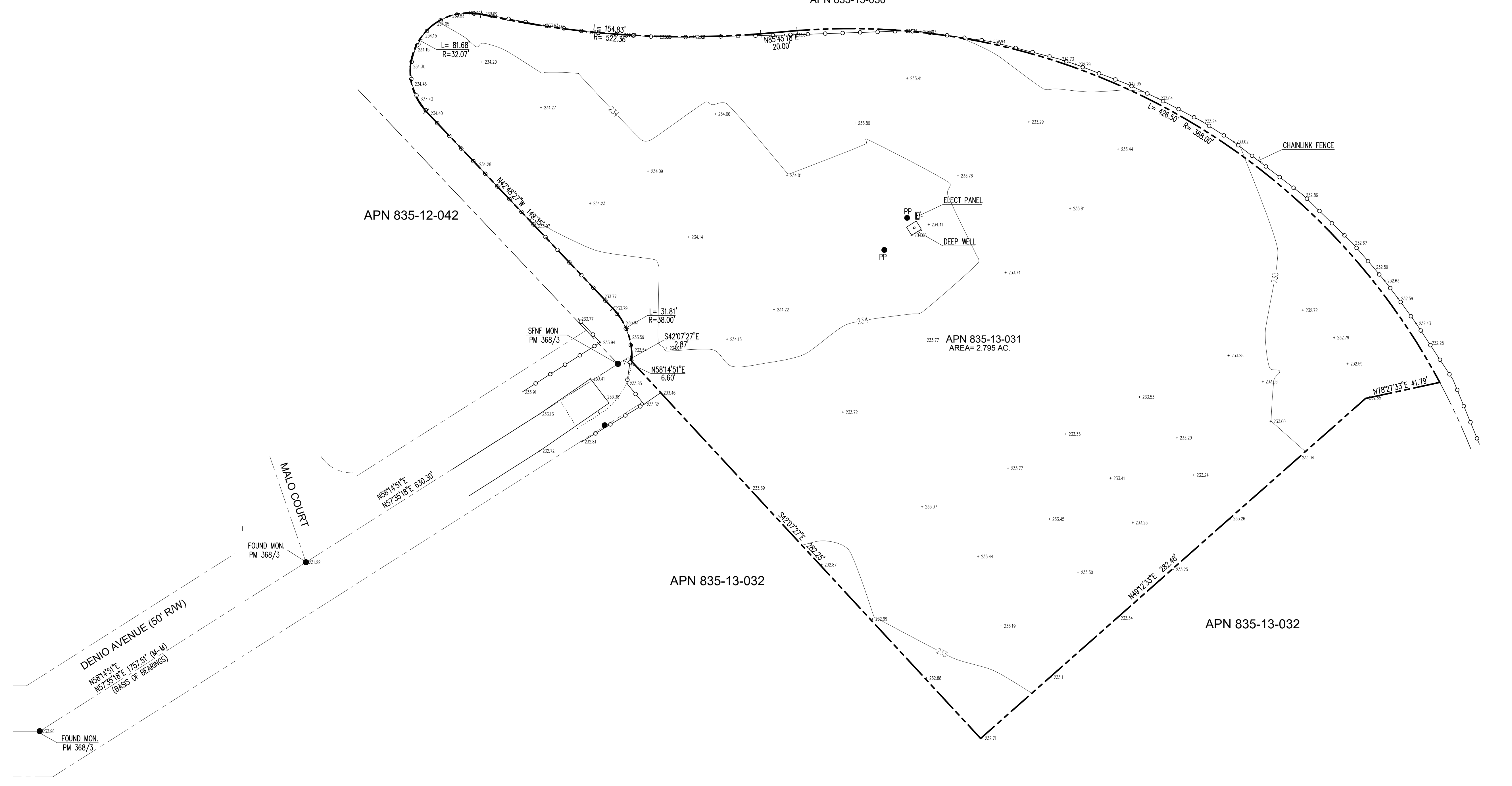
SANTA CLARA VALLEY WATER DISTRICT
APN 835-13-030

APN 835-12-042

APN 835-13-031
AREA= 2.795 AC.

APN 835-13-032

APN 835-13-032



BASIS OF BEARINGS

THE BEARING BETWEEN TWO FOUND MONUMENTS ALONG DENIO AVENUE TAKEN AS N 57°35'18" E AS SHOWN ON PARCEL MAP BK 368 PG 3 SANTA CLARA COUNTY RECORDS.

BENCHMARK

BENCHMARK ID: BM1015; ELEVATION 228.42 FT, DATUM: NAVD88
BASED ON: NGS
DESCRIPTION: BRASS DISK ON TOP OF CONCRETE BRIDGE DECK AT THE SOUTHERLY CORNER OF BRIDGE CROSSING OF BUENA VISTA AVENUE 800 FT WESTERLY FROM FOOTHILL AVE. 800 FT EASTERLY FROM MARCELLA AVE. 2 FT NORTHERLY FROM SOUTHERLY HEADWALL. UNINCORPORATED CITY OF GILROY.

REFERENCES

1. PARCEL MAP BK 368 PG 3 SANTA CLARA COUNTY RECORDS.
2. RECORD OF SURVEY BK 646 PG 25-28 SANTA CLARA COUNTY RECORDS.
3. RECORD OF SURVEY BK 761 PG 37 SANTA CLARA COUNTY RECORDS.
4. GRANT DEED DOC 22880543 REC 3-12-2015 SANTA CLARA COUNTY RECORDS.
5. MAP OF SUBDIVISION OF THE 0700LE HOMESTEAD SANTA CLARA COUNTY RECORDS.

LEGEND & ABBREVIATIONS

- PROPERTY LINE
 - - - ADJACENT PROPERTY LINE
 - CENTER LINE / MONUMENT LINE
 - - - - - CHAINLINK FENCE
 - (D) STORM DRAIN MANHOLE
 - (S) SANITARY SEWER MANHOLE
 - FOUND MONUMENT
 - + SPOT ELEVATION
 - ⊙ BENCH MARK
 - ⊙ T16" TREE & DIAMETER
 - ⊙ CO SEWER CLEAN OUT
 - ⊙ WM WATER METER
 - ⊙ WV WATER VALVE
 - ⊙ UBX UTILITY BOX
 - APN ASSESSORS PARCEL NUMBER
 - AC ASPHALT CONCRETE
 - BC BACK OF CURB, BLDG CORNER
 - CALC CALCULATED
 - CONC CONCRETE
 - CL CENTER LINE
 - (E) EXISTING
 - EP EDGE OF PAVEMENT
 - FND FOUND
 - FF FINISH FLOOR
 - G GROUND
 - LP LIGHT POST, CURB & GUTTER
 - P PAVEMENT
 - PP POWER POLE
 - PST POST
 - R/W RIGHT OF WAY
- CONTOUR INTERVAL 1 FEET

NOTES:

1. UTILITY LOCATIONS WERE BASED ON A FIELD SURVEY AND DOES NOT REFLECT THE LOCATION UNDERGROUND.
2. ALL DISTANCES AND DIMENSIONS ARE IN FEET AND DECIMALS THEREOF.

| | | | | | | | |
|---|-------------------|--|--|--|---|-----------------------------------|----------------|
| RICARDO S. SITJAR CIVIL ENGINEER + LAND SURVEYOR 173 NEWCASTLE DRIVE, VALLEJO, CA 94591 TEL (707) 704-3139 (510) 648-4276 | | | DATE 03.07.24 TOPOGRAPHIC SURVEY | PROJECT TOPOGRAPHIC SURVEY A P N 835 - 13 - 031 DENIO AVENUE GILROY CALIFORNIA | OWNER DENIO AVENUE GILROY CALIFORNIA | SHEET CONTENT TOPOGRAPHIC PLAN | SHEET NO. 1 |
| DRAWN BY AGM | CHECKED BY RSS | | FOUND MON. PM 368/3 N58°14'51"E N57°35'18"E (BASIS OF BEARINGS) 757.57' (M-W) 50' RW | | | | |