

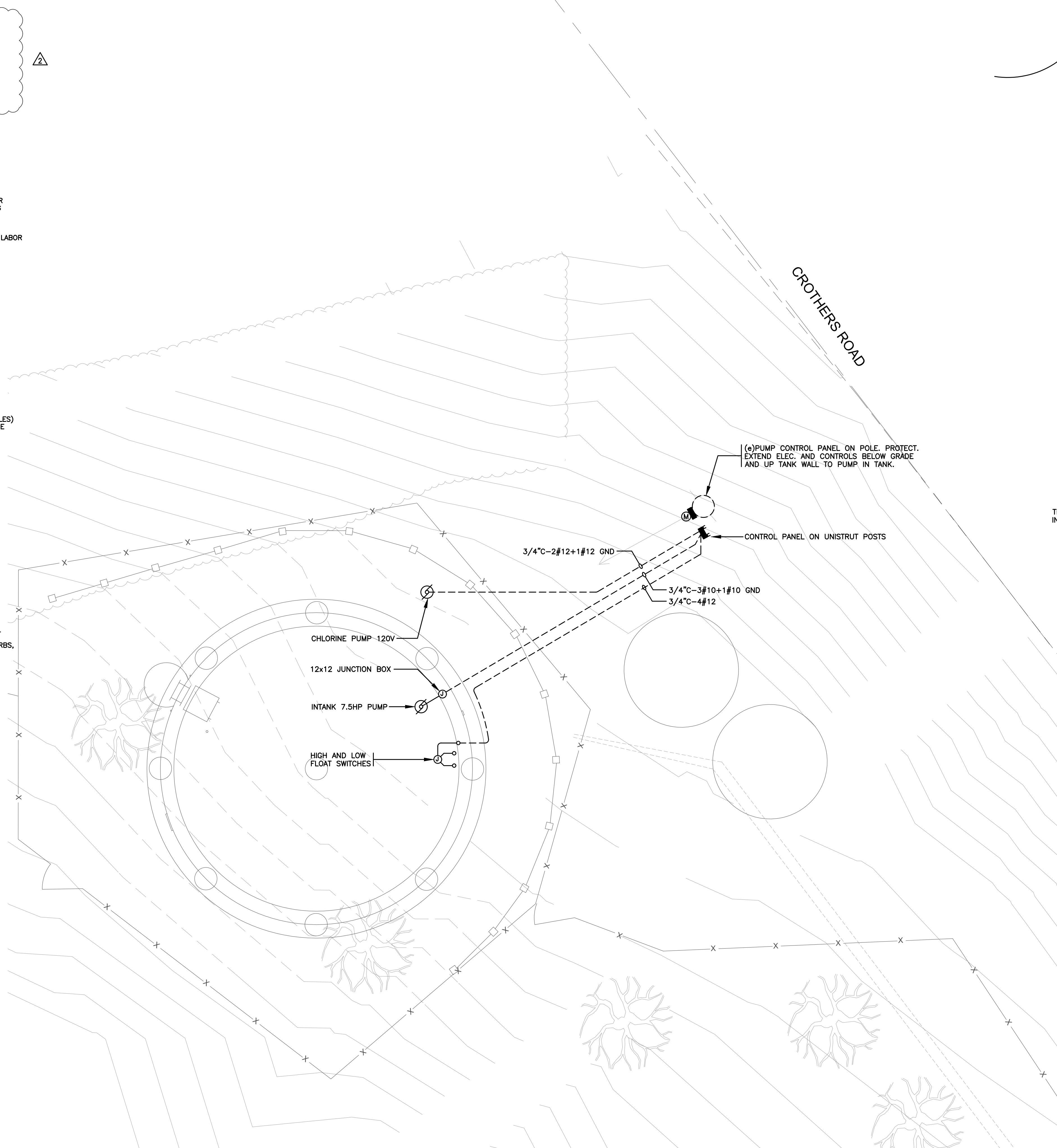
A. GENERAL REQUIREMENTS

1. ELECTRICAL INSTALLATION SHALL COMPLY WITH TITLE 24, CALIFORNIA CODE OF REGULATIONS, INCLUDING THE FOLLOWING:
TITLE 24, CCR, PART 2, 2022 CBC
TITLE 24, CCR, PART 3, 2022 CBC
TITLE 24, CCR, PART 4, 2022 CMC
TITLE 24, CCR, PART 9, 2022 CFG
SAN JOAQUIN VALLEY AIR QUALITY BOARD REQUIREMENTS
ALL APPLICABLE LOCAL CODES
2. ELECTRICAL CONTRACTOR SHALL VERIFY ELECTRICAL SERVICE MODIFICATIONS AT SITE PRIOR TO BIDDING. SERVICES TO CONFORM TO UTILITY COMPANY REQUIREMENTS. ELECTRICAL CONTRACTOR SHALL ARRANGE FOR SERVICE REMOVALS/MODIFICATIONS/INSTALLATION PER UTILITY COMPANY. PROVIDENTS SHALL ADVISE ALL CUSTOMER CHARGED SERVICE COSTS. COORDINATE WITH OWNER AND UTILITY COMPANY FOR SERVICE REMOVALS AND INSTALLATION SO AS TO MINIMIZE POWER OUTAGES.
3. CONTRACTOR SHALL PROCURE AND PAY FOR ALL PERMITS, LICENSES, ETC. REQUIRED TO CARRY ON AND COMPLETE THE WORK.
4. THE INTENT OF THIS PROJECT IS TO INSTALL A FULLY FUNCTIONAL BOOSTER PUMP STATION AND WELL PUMP STATION AND PROVIDE ALL EQUIPMENT (INCLUDING GENERATOR, AUTOMATIC TRANSFER SWITCH, ETC.) TO ENABLE THIS PUMP STATION TO OPERATE WHEN UTILITY POWER FAILS. THE ELECTRICAL CONTRACTOR SHALL PROVIDE ALL LABOR, MATERIALS, PLUMBING EQUIPMENT, TRANSPORTATION TO PERFORM ALL OPERATIONS NECESSARY FOR THE COMPLETION OF THE WORK. PROVIDE ALL LABOR AND MATERIALS FOR ANY REASONABLE INCIDENTAL WORK REQUIRED FOR PROPER EXECUTION OF THIS PROJECT WHETHER SPECIFICALLY MENTIONED OR NOT, ALL AS IMPOSED BY THE INTENT ABOVE.
5. ALL MATERIALS SHALL BE NEW AND LISTED WITH THE UNDERWRITERS' LABORATORY, MEET THEIR REQUIREMENTS AND SHALL BEAR THEIR LABEL WHEREVER STANDARDS HAVE BEEN ESTABLISHED AND LABEL SERVICE IS REGULARLY FURNISHED BY THAT AGENCY.
6. ELECTRICAL DRAWINGS ARE ESSENTIALLY DIAGRAMATIC AND ALTHOUGH THE SIZE AND LOCATIONS OF EQUIPMENT ARE SHOWN TO SCALE WHEREVER POSSIBLE, CONTRACTOR SHALL MAKE USE OF ALL DATA IN ALL CONTRACT DOCUMENTS AND VERIFY THIS INFORMATION AT THE SITE. CONTRACTOR SHALL BE RESPONSIBLE FOR LAYING OUT AND INSTALLING HIS WORK TO AVOID INTERFERENCE WITH OTHER TRADES.

1. CONTRACTOR SHALL BE RESPONSIBLE FOR CUTTING AND PATCHING OF ROADWAYS, ETC. TO MATCH EXISTING WHERE IT IS NECESSARY TO INSTALL NEW CONDUITS.
2. IRRESPECTIVE OF WHETHER IT SHOWS UP ON THE PLANS OR NOT, THE ELECTRICAL CONTRACTOR SHALL CONNECT ALL ELECTRICAL (LIGHTS AND RECEPTACLES) AND CONTROL SYSTEM DEVICES (TELEMETRY, STARTERS, ETC.) THIS SHALL BE DONE AT NO ADDITIONAL CHARGE TO THE OWNERS.

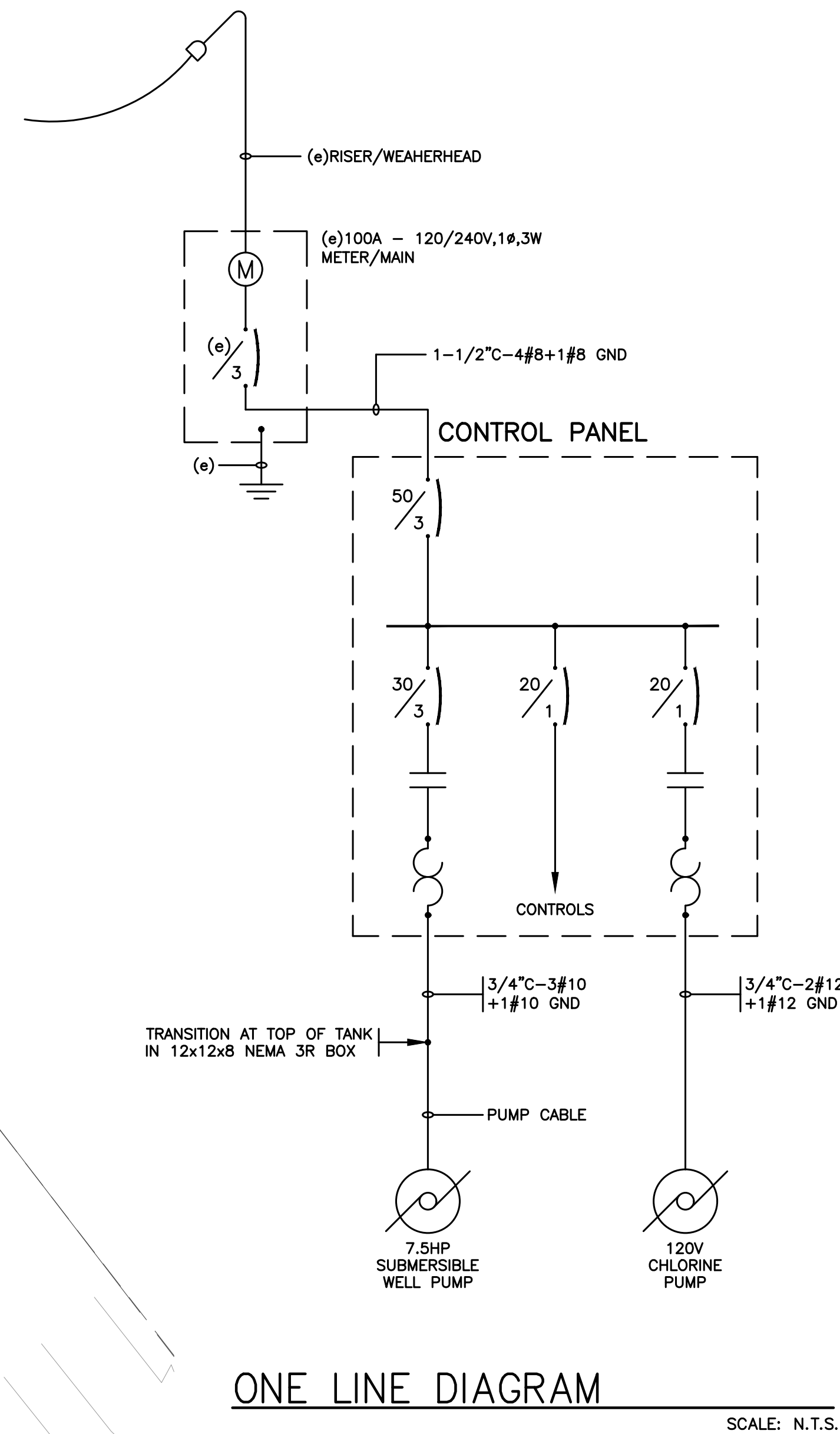
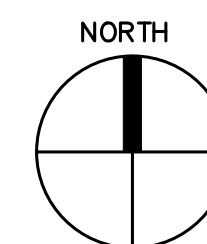
1. ALL WIRING SHALL BE INSTALLED IN CONDUITS. CONDUITS SHALL BE CONCEALED UNDERGROUND AS FAR AS PRACTICAL. ALL CONDUITS INSTALLED ON EXTERIOR WALLS (I.E. EXTERIOR SURFACE) SHALL BE GALVANIZED RIGID STEEL.
2. CONDUCTORS SHALL BE COPPER CONDUCTORS TYPE THW/THWN FOR #8 OR SMALLER AND COPPER CONDUCTORS TYPE THW FOR #6 OR LARGER UNLESS OTHERWISE NOTED OR REQUIRED BY CODE.
3. ALL DEVICES, CONDUITS, RACEWAYS AND CABLES SHOWN ARE NEW TO BE PROVIDED UNLESS OTHERWISE NOTED.
4. SEPARATION OF WIRING OF DIFFERENT VOLTAGE CLASSIFICATIONS:
 - A. WIRING FOR DIFFERENT VOLTAGE CLASSIFICATIONS SHALL BE INSTALLED IN ENTIRELY SEPARATE RACEWAYS/CONDUITS SYSTEM AND ENCLOSURES/BOXES.
 - CLASSIFICATION 1 - 0 TO 30V
 - CLASSIFICATION 2 - 100 TO 250V
 - CLASSIFICATION 3 - 251 TO 500V
 - B. DISCONNECTS SHALL NOT BE USED AS THROUGH RACEWAYS FOR WIRING NOT DIRECTLY SERVING THE DISCONNECTS.
5. WORK SHOWN ON THE DRAWINGS TO BE INSTALLED UNDERGROUND SHALL BE INSTALLED AT LEAST 24" BELOW GRADE UNLESS OTHERWISE NOTED. BACKFILL IN 6" THICK, PROPERLY MOISTENED LAYERS, TO A DENSITY NOT LESS THAN THAT OF ADJACENT, UNDISTURBED EARTH. RESTORE SURFACES, ROADWAYS, WALKS, CURBS, WALLS AND EXISTING UNDERGROUND INSTALLATIONS TO ORIGINAL CONDITION IN AN ACCEPTABLE MANNER.

1. ELECTRICAL CONTRACTOR SHALL COORDINATE WITH MECHANICAL CONTRACTOR FOR EXACT LOCATIONS OF ALL HVAC UNITS, DISCONNECTS AND DEVICES IN FIELD. COORDINATE LOCATION FOR DISCONNECTS AND WEATHER-PROOF OUTLETS WITH ELECTRICAL CONNECTION POINTS ON THE UNITS TO KEEP FLEXIBLE CONDUIT LENGTH TO A MINIMUM (36" MAXIMUM). VERIFY AND CONFIRM THE ACTUAL MOUNTING LOCATION ON THE HVAC UNIT FOR THE DISCONNECT.
2. THE RATING OF THE DISCONNECT SHALL BE SUCH AS TO ENABLE THE LARGEST FUSE SIZE ON THE UNIT NAMEPLATE TO BE INSTALLED IN THE DISCONNECT. PROVIDE FUSES OF THIS RATING.
3. FURNISH AND INSTALL ALL LINE VOLTAGE AND LOW VOLTAGE CONDUITS AND WIRING TO HVAC EQUIPMENT AND ASSOCIATED CONTROLS AND DEVICES AS SHOWN ON THE ELECTRICAL AND MECHANICAL PLANS, UNLESS OTHERWISE NOTED.



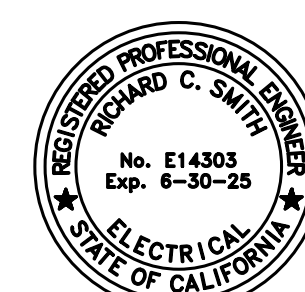
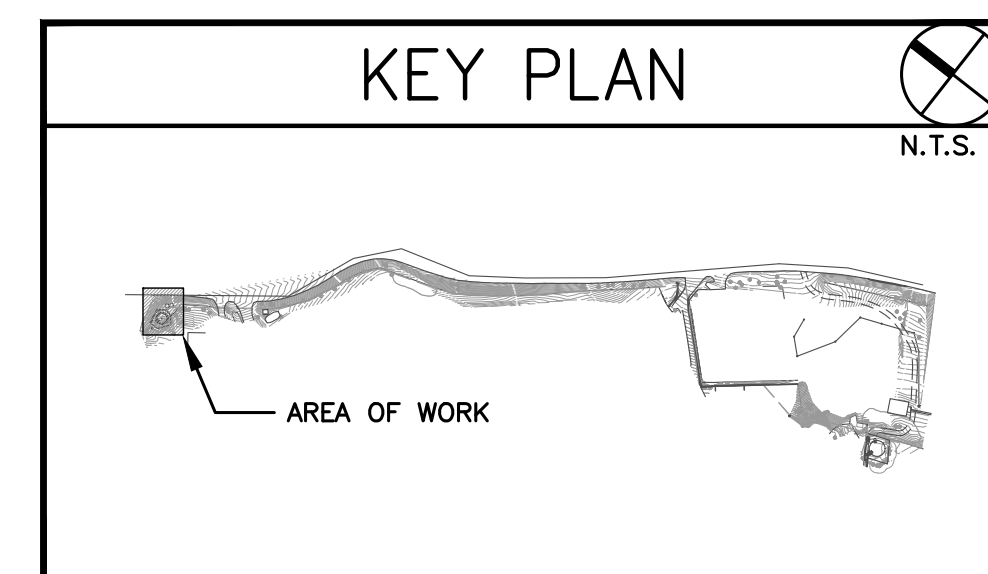
CROTHERS TANK ELECTRICAL SITE PLAN

SCALE: 1/4"=1'-0"



ONE LINE DIAGRAM

SCALE: N.T.S.



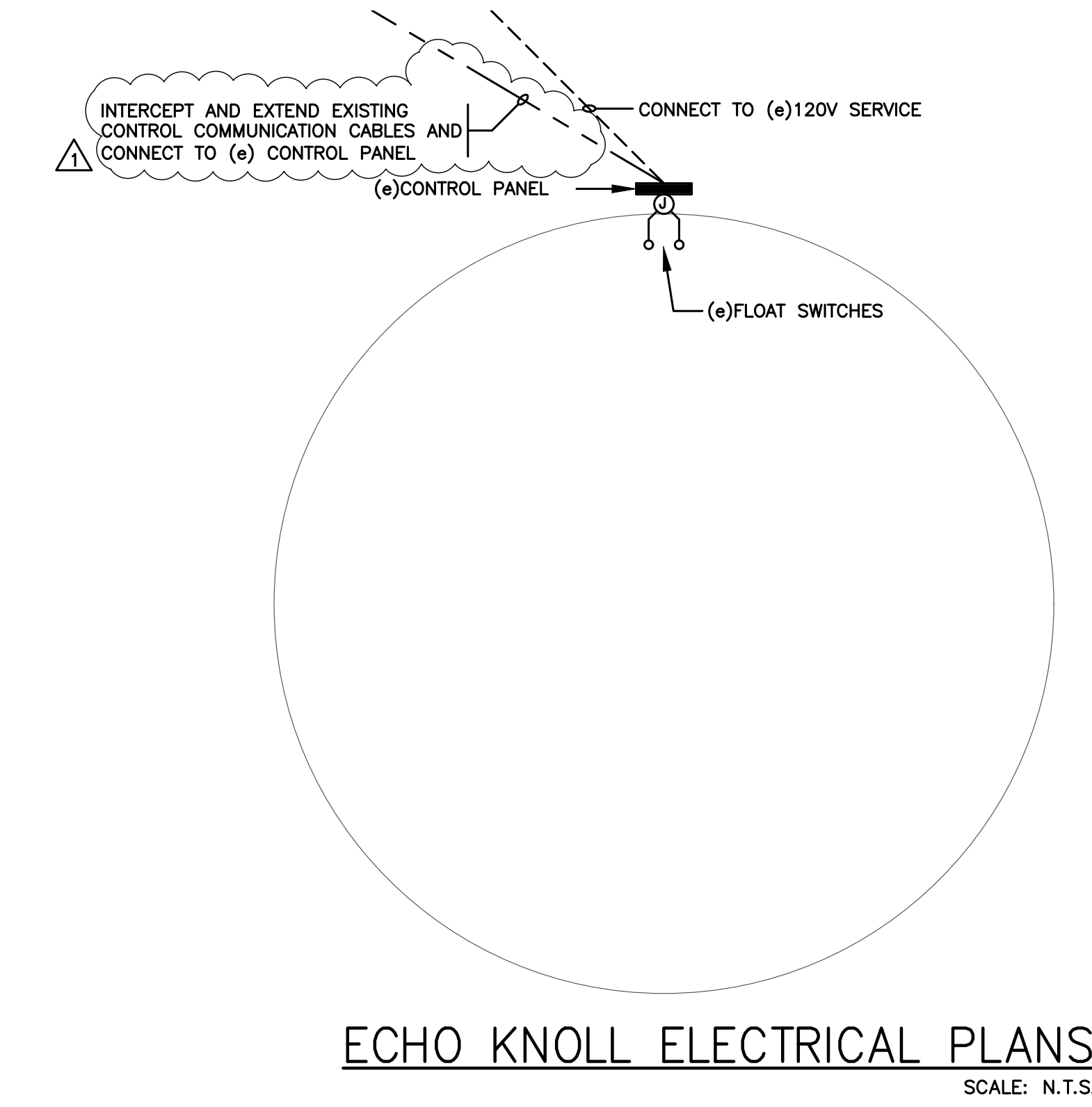
HCS ENGINEERING, INC.
CONSULTING ELECTRICAL ENGINEERS
4512 FEATHER RIVER DRIVE, SUITE F
STOCKTON, CA 95219 (209)478-8270
E-MAIL ADDRESS - richard@hcs-eng.com
PROJ. 2012.302 DES. BA ENG. RCS

OF	—	SHEETS	E1	SHEET	DWC #—	DRAWN: BA	SCALE: AS SHOWN	DATE: 5.8.24	ROSEVIEW HEIGHTS MUTUAL WATER COMPANY	CROTHERS TANK ELECTRICAL SITE PLAN	Binkley Associates, Inc. CONSULTING ENGINEERS 7246 SHARON DRIVE STE. J • SAN JOSE • CALIFORNIA 95129 • (408) 257-9252	REVISIONS	BA
				REMOVED RADIO 9/17/13	BA								
												PLAN UPDATE 4/4/18	GT

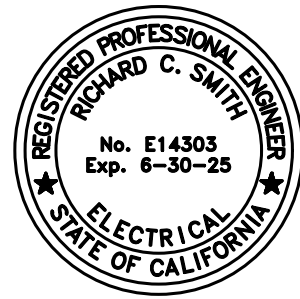
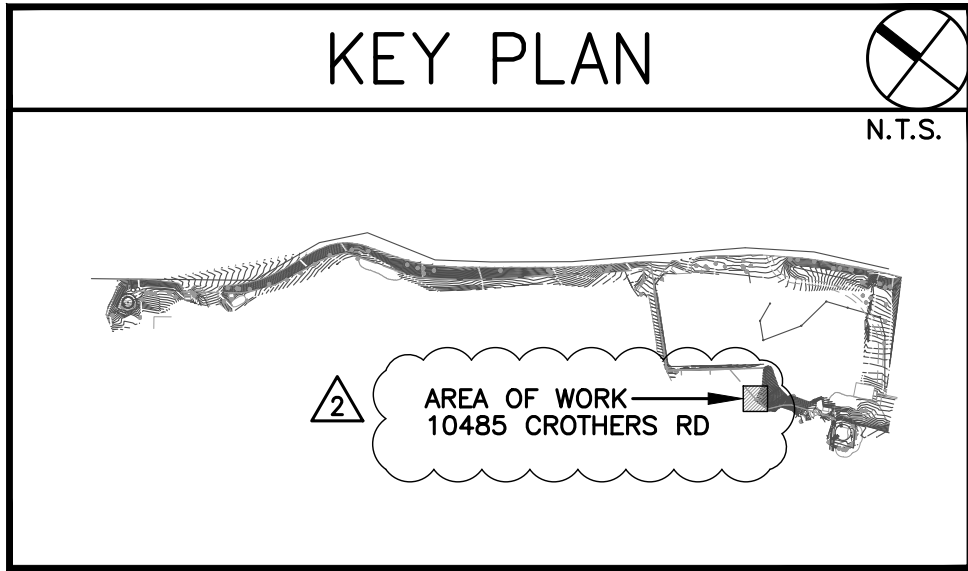
FILE: C:\Users\Morgan\Box\HCS\2024\101-200\Roseview Heights Mutual Water\E2.dwg May 08, 2024 - 9:50am Morgan



PIPELINE ELECTRICAL DEMOLITION PLAN



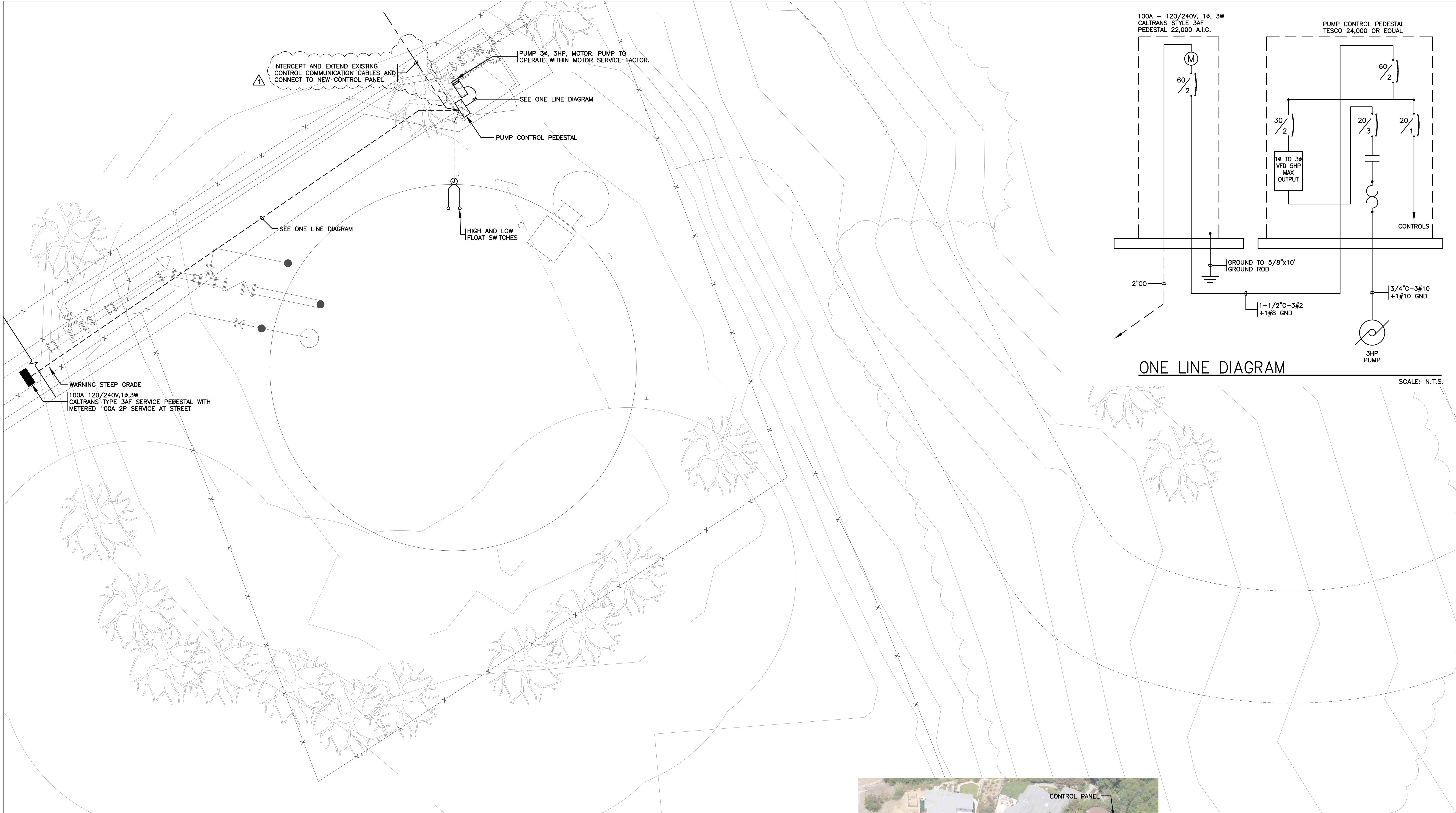
MIGUELITA ELECTRICAL PLANS



HCS ENGINEERING, INC.
CONSULTING ELECTRICAL ENGINEERS
4512 FEATHER RIVER DRIVE, SUITE F
STOCKTON, CA 95219 (209)478-8270
E-MAIL ADDRESS - richard@hcs-eng.com
PROJ. 2012.302 DES. BA ENG. RCS

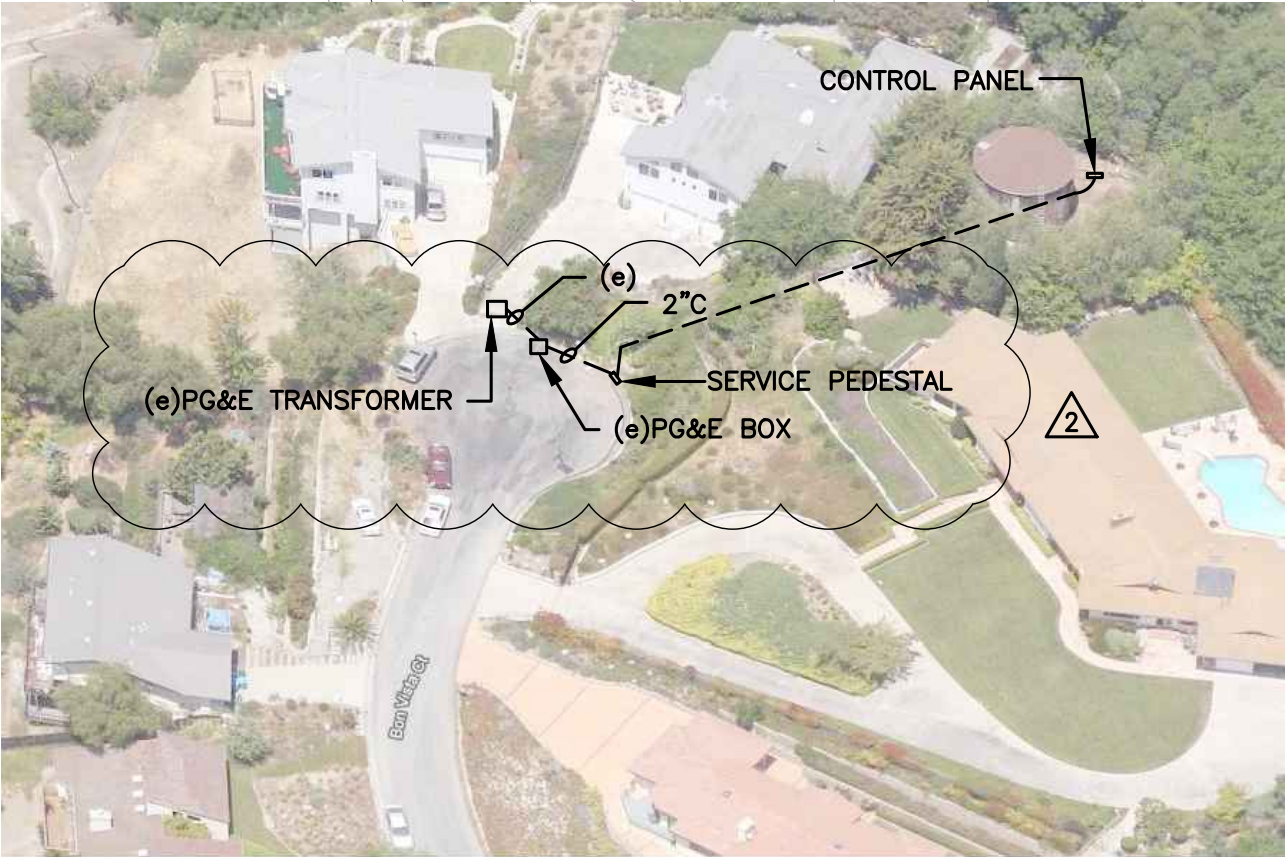
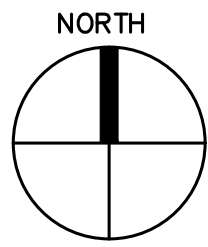
ROSEVIEW HEIGHTS MUTUAL WATER COMPANY		PIPELINE ELECTRICAL DEMOLITION PLAN	Binkley Associates, Inc. CONSULTING ENGINEERS 7246 SHARON DRIVE STE. J • SAN JOSE • CALIFORNIA 95129 • (408) 257-9252	REVISIONS	
WATER TANK AND PIPELINE REPLACEMENT PROJECT				REMOVED RADIO 9/17/13	BA
				PLAN UPDATE 4/4/18	GT
DATE: 5.8.24					
SCALE: AS SHOWN					
DRAWN: BA					
DWG.#-					
SHEET					
OF	1	E2			
SHEET					

FILE: C:\Users\Morgan\Box\HCS\2024\101-200\Roseview Heights Mutual Water\ES.dwg May 08, 2024 - 9:50am Morgan



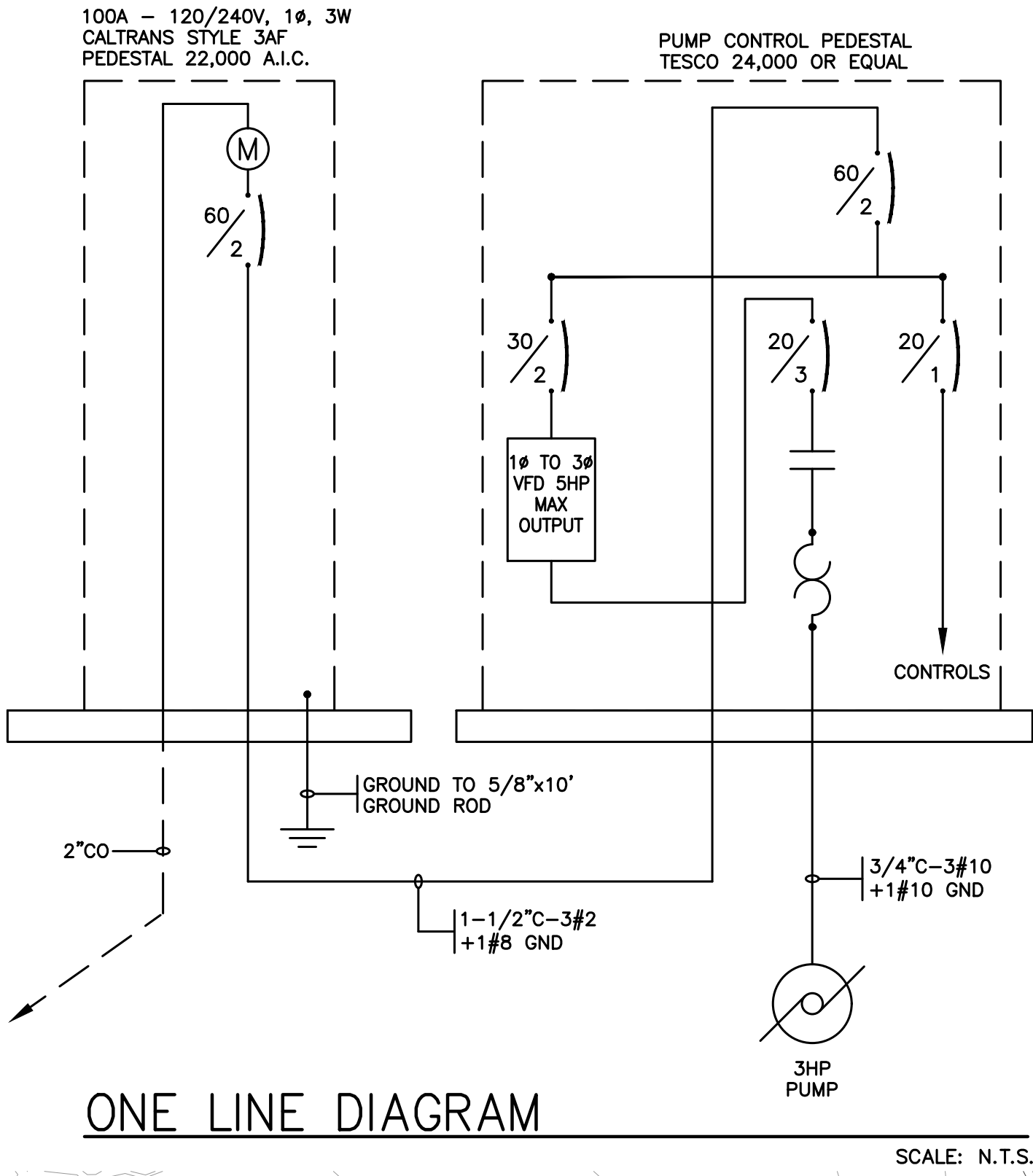
BON VISTA TANK ELECTRICAL SITE PLAN

SCALE: 1/4"=1'-0"



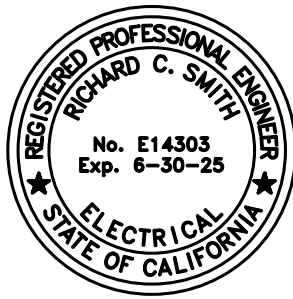
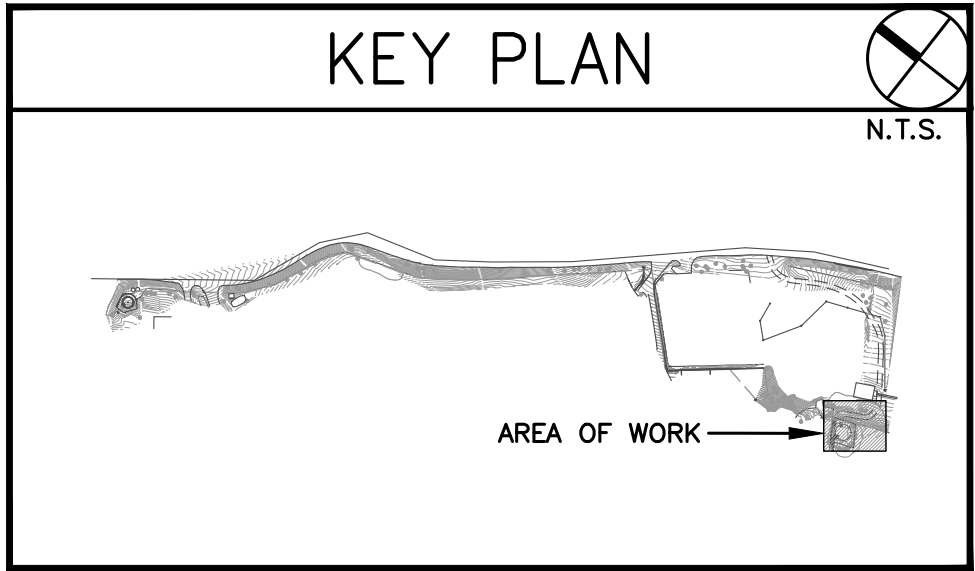
ELECTRICAL SITE PLAN

SCALE: N.T.S.



ONE LINE DIAGRAM

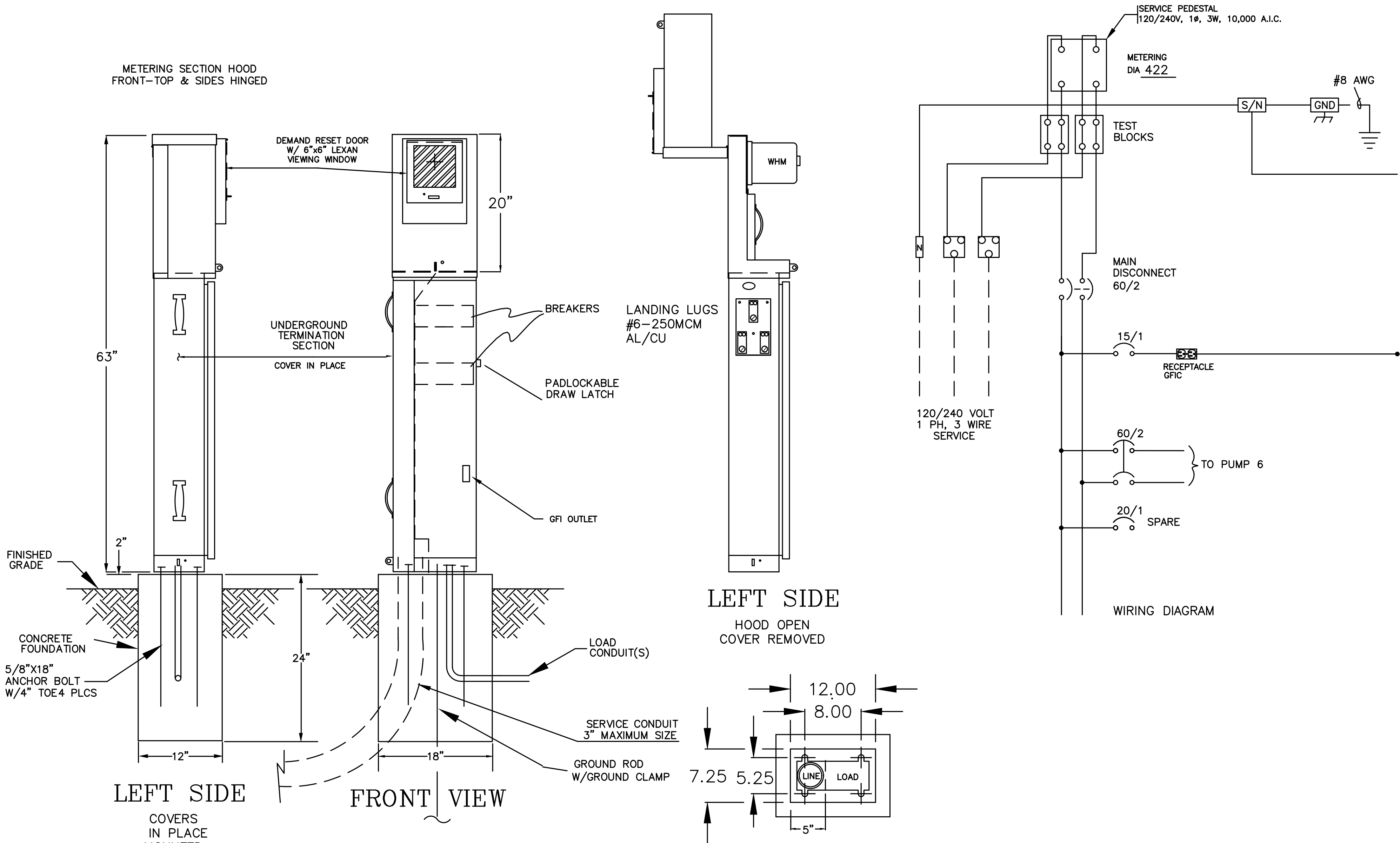
SCALE: N.T.S.



HCS ENGINEERING, INC.
CONSULTING ELECTRICAL ENGINEERS
4512 FEATHER RIVER DRIVE, SUITE F
STOCKTON, CA 95219 (209)478-8270
E-MAIL ADDRESS - richard@hcs-eng.com
PROJ. 2012.302 DES. BA ENG. RCS

REVISIONS		BA
REMOVED RADIO		BA
9/17/13		
PLAN UPDATE		GT
4/4/18		
Binkley Associates, Inc.		
CONSULTING ENGINEERS		
7246 SHARON DRIVE STE. J o SAN JOSE o CALIFORNIA 95129 o (408) 257-9252		
ROSEVIEW HEIGHTS MUTUAL		
WATER COMPANY		
WATER TANK AND PIPELINE		
REPLACEMENT PROJECT		
DATE: 5.8.24		
SCALE: AS SHOWN		
DRAWN: BA		
DWG.#-		
SHEET		
OF 1 SHEETS		

FILE: C:\Users\Morgan\Box\HCS\2024\101-200\Roseview Heights Mutual Water\ES.dwg May 08, 2024 - 9:51am Morgan



ENCLOSURE CONSTRUCTION NOTES

1. FABRICATED FROM 1/8" ALUMINUM SHEET STOCK ELECTRICALLY WELDED AND REINFORCED WHERE REQUIRED.
2. CONSTRUCTION WILL BE NEMA 3R RAIN-TIGHT
3. ALL NUTS, BOLTS, SCREWS AND HINGES WILL BE STAINLESS STEEL.
4. NUTS, BOLTS & SCREWS WILL NOT BE VISIBLE FROM OUTSIDE OF ENCLOSURE.
5. PHENOLIC NAMEPLATES WILL BE PROVIDED AS REQUIRED.
6. CONTROL WIRING WILL BE MARKED AT BOTH ENDS BY PERMANENT WIRE MARKERS.
7. A PLASTIC COVERED WIRING DIAGRAM WILL BE ATTACHED TO THE INSIDE OF THE FRONT DOOR.
8. ENCLOSURE WILL BE FACTORY WIRED AND CONFORM TO REQUIRED NEMA STANDARDS.
9. ANODIZED AFTER FABRICATION
10. MINIMUM DIMENSIONS INDICATED. PEDESTAL ENCLOSURE TO BE SIZED PER P.G.&E. REQUIREMENTS AND TO INCORPORATE ALL ITEMS PER ONE LINE DIAGRAM AND CONTROL SCHEMATICS.
11. PEDESTAL AS MANUFACTURED BY TESCO OR MILBANK WEST, WITH A METERED SECTION, CIRCUIT BREAKER DISTRIBUTION SECTION, CONTACTORS, RECEPTACLES, PHOTOCELL, TERMINAL BLOCKS, SEPARATION BARRIERS, ETC. MADE OF 12 GA. STEEL ALL FASTENERS & HINGES TO BE STAINLESS STEEL.
12. COMPLETE PEDESTAL SHALL COMPLY WITH UTILITY REGULATIONS AND REQUIREMENTS AND SHALL BE APPROVED BY THE SAME PRIOR TO FABRICATION.
13. FINISH COLOR: LIGHT GREEN. POLYURETHANE INDUSTRIAL GRADE POWDER COATING.
14. UL LISTED.

SERVICE PEDESTAL DETAIL

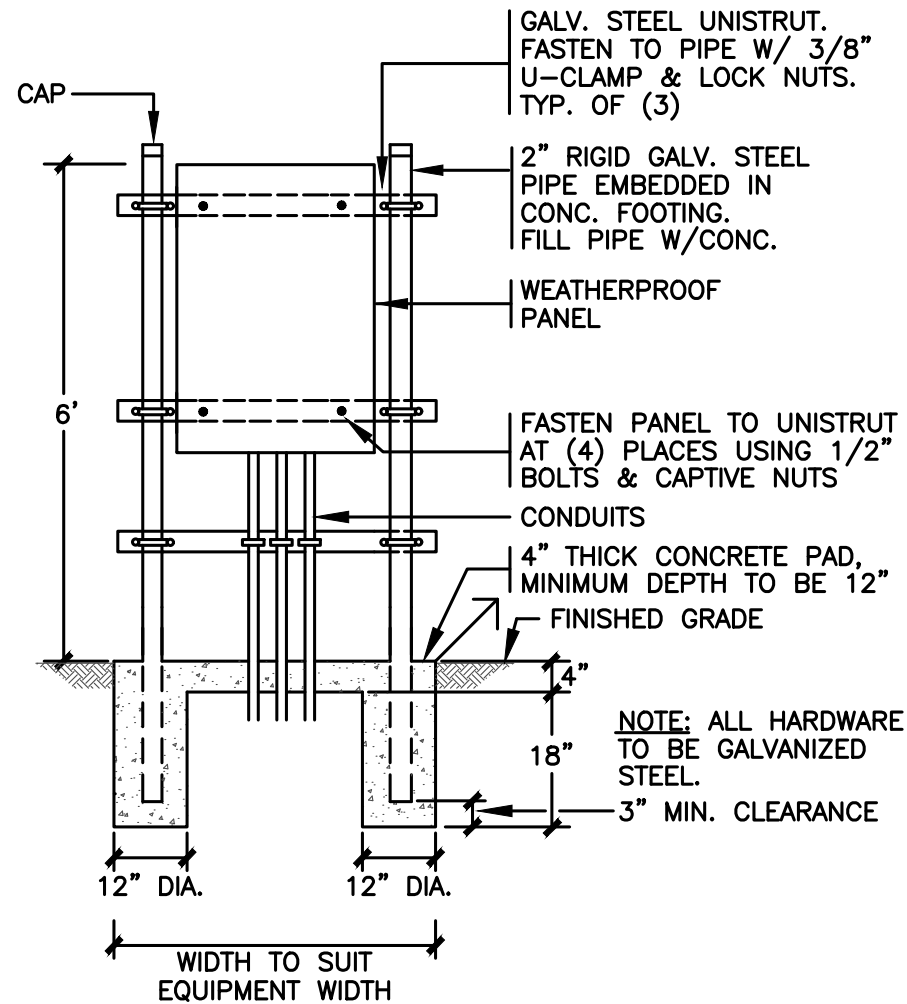
SCALE: N.T.S.

LEGEND	
(A)	FLUORESCENT LIGHT FIXTURE
(B)	CEILING LIGHT FIXTURE
(C)	RECESSED LIGHT FIXTURE
(D)	WALL BRACKET LIGHT FIXTURE
(E)	LIGHT SWITCH - SPST
(F)	120 VOLT DUPLEX WALL OUTLET
(G)	TELEPHONE WALL OUTLET
(H)	JUNCTION BOX
(I)	FUSED DISCONNECT SWITCH
(J)	TIME CLOCK, DPST, 24 HOUR WITH SPRING RESERVE. U.O.N.
(K)	MOTOR OUTLET
(L)	CONDUIT CONCEALED IN WALL OR CEILING
(M)	CONDUIT CONCEALED IN FLOOR OR UNDERGROUND
(N)	SEALTITE FLEX CONNECTION
(O)	DISTRIBUTION PANEL
(P)	LIGHTING PANEL
(Q)	SIGNAL CABINET AS DESIGNATED
(R)	NIGHT LIGHT
(S)	U.O.N. UNLESS OTHERWISE NOTED
(T)	CO CONDUIT ONLY
(U)	WP WEATHERPROOF
(V)	PC PHOTOCELL. MOUNT ON ROOF FACING GENERAL NORTH U.O.N.
(W)	GROUND ROD 3/4"Ø x 8'-0" LONG
(X)	PILOT LIGHT
(Y)	HOA-HAND/OFF/AUTO SWITCH
(Z)	ELAPSED TIME METER, NON-RESET 0-9999 HOURS
(AA)	PRESSURE TRANSDUCER
(AB)	PRESSURE SWITCH
(AC)	EMERGENCY LIGHT WITH BATTERY PACK & CHARGER
(AD)	BATTERY CHARGER
(AE)	VFD VARIABLE FREQUENCY DRIVE
(AF)	RVATS REDUCED VOLTAGE AUTO TRANSFORMER STARTER

CAP. LETTER=TYPE
SM. LETTER=SWITCHING
NUMBER=CIRCUIT

FLUSH
↓

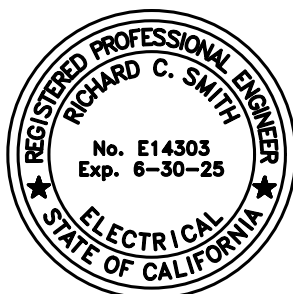
MIN. SIZE=1/2"C
TICS=NO OF #12 WIRES
NO TICS=2#12 U.O.N.



MOUNTING DETAIL: PANEL

SCALE: N.T.S.

NOMINAL DIMENSIONS: 36"Hx22"Wx5.75"D
WEIGHT: 80 LBS.
MOUNTING DETAIL FOR GUTTER & DISCONNECTS SIMILAR



HCS ENGINEERING, INC.
CONSULTING ELECTRICAL ENGINEERS
4512 FEATHER RIVER DRIVE, SUITE F
STOCKTON, CA 95219 (209)478-8270
E-MAIL ADDRESS - richard@hcs-eng.com
PROJ. 2012.302 DES. BA ENG. RCS

REVISIONS	BA
REMOVED RADIO 9/17/13	BA
PLAN UPDATE 4/4/18	GT
Binkley Associates, Inc.	
CONSULTING ENGINEERS	
7246 SHARON DRIVE STE. J o SAN JOSE o CALIFORNIA 95129 o (408) 257-9252	
ELECTRICAL DETAILS	
ROSEVIEW HEIGHTS MUTUAL WATER COMPANY	WATER TANK AND PIPELINE REPLACEMENT PROJECT
DATE: 5.8.24	
SCALE: AS SHOWN	
DRAWN: BA	
DWG.#-	
SHEET	
OF 1 SHEETS	