



County of Santa Clara Safety Element Update

CARAS Listening Session

Presenters

Samuel Gutierrez, Principal Planner, County of Santa Clara

December 15, 2022



Welcome



Purpose

- **Context:** Introduce the Safety Element Update to community members
- **Discussion:** Receive input on public safety concerns and opportunities to improve emergency preparedness and response in the County
- Encourage participation in the engagement process

Agenda

- Overview of the Safety Element Update Team
- Overview of Related County Planning Efforts
- What is a Safety Element?
- Why update the Safety Element?
- Role of stakeholders and public feedback



Break & Result of Polling Questions





Anticipated Schedule





County Planning Efforts Underway



Safety Element

Provides goals, policies, and actions to address hazards that may affect unincorporated Santa Clara County

Housing Element

Addresses the housing needs of the unincorporated areas of Santa Clara County

MJHMP

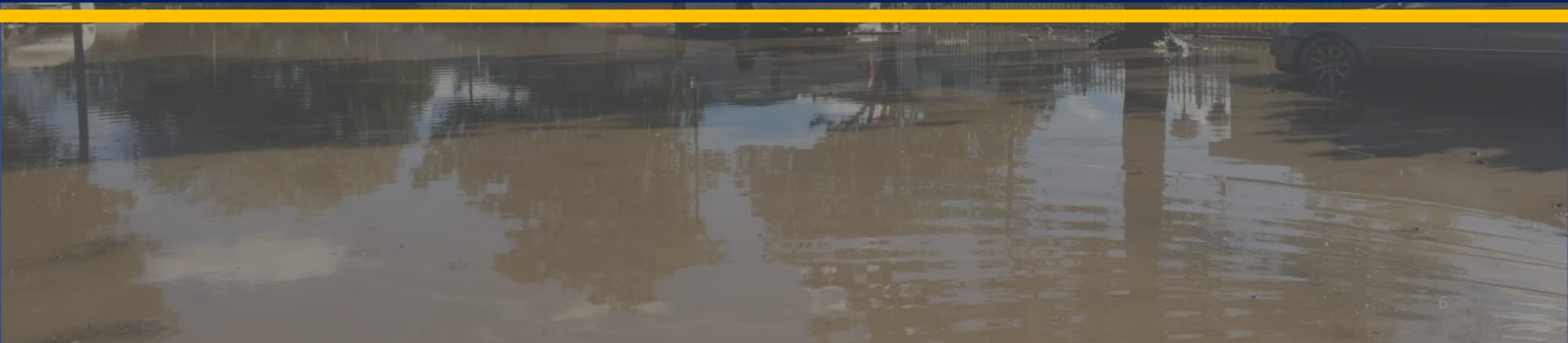
Identifies key hazards of concern and potential actions and projects to reduce vulnerabilities to those hazards

CWPP

Outlines a mitigation and preparedness plan to reduce wildfire risks in Santa Clara County (includes Cities, Towns, and Special Districts)



Basics of the Safety Element





What a Safety Element Is Not?



A Safety Element does not focus on immediate actions that may make communities and people safer today





What is a Safety Element?



Instead, it focuses on Long Term Actions via:

- **Mandatory** chapter of the General Plan
- Addresses the **safety needs of the unincorporated areas**
- **Required Components**
 - ✓ Background and Technical Information
 - ✓ Maps of hazards
 - ✓ Goals and policies
 - ✓ **Safety Element Implementation actions and programs**
- Safety Element Update **requires** frequent update to meet legislative mandate

Land Use

Housing

Circulation

Open Space

Conservation

Noise

Safety

Environmental Justice*

Air Quality**

* Required if Disadvantaged Communities are located in the Jurisdiction

** Required in certain locations within California



What is in a Safety Element?



Govt Code 65302 (g) (1) - Protection of the Community From Unreasonable Risks Associated With:

Geologic/Seismic Hazards

- ✓ Seismically Induced Surface Rupture
- ✓ Ground Shaking
- ✓ Liquefaction
- ✓ Ground Failure
- ✓ Subsidence





What is in a Safety Element?



Govt Code 65302 (g) (1) - Protection of the Community
From Unreasonable Risks Associated With:



Source: Valley Water

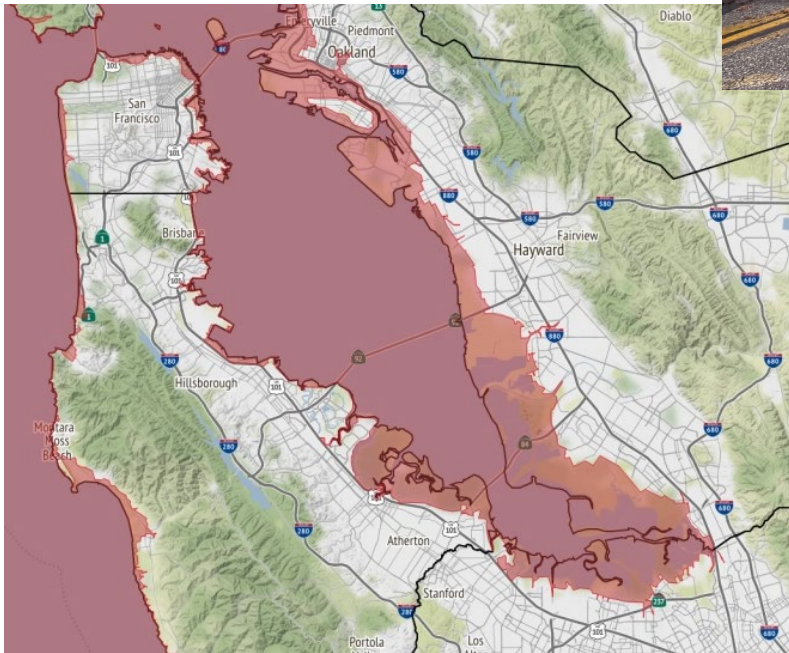


Silicon Valley 2.0 – Climate Hazard Fact Sheet:
Sea Level Rise in Santa Clara County

Flooding
Dam Inundation
Sea Level Rise
Tsunami/Seiche
Slope Instability

- ✓ Mudslides
- ✓ Landslides

Source: Valley Water





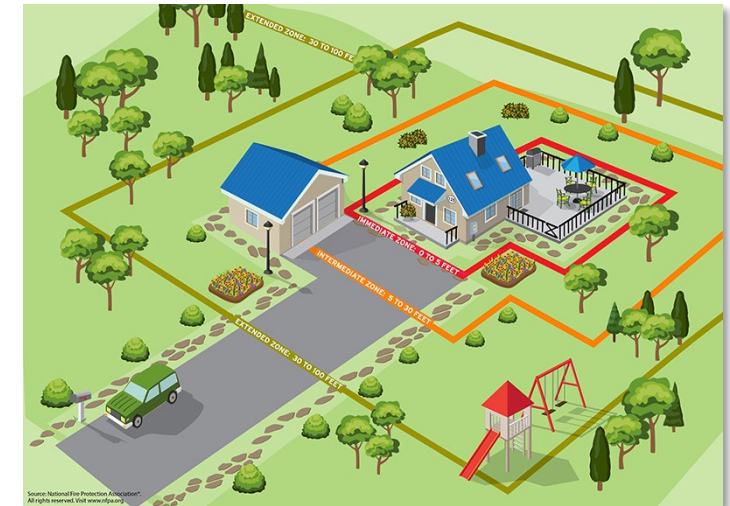
What is in a Safety Element?



Govt Code 65302 (g) (1) - Protection of the Community From Unreasonable Risks Associated With:

Wildland and Urban Fires

- ✓ Evacuation Routes
- ✓ Peakload Water Supply Requirements
- ✓ Minimum Road Widths
- ✓ Clearances Around Structures

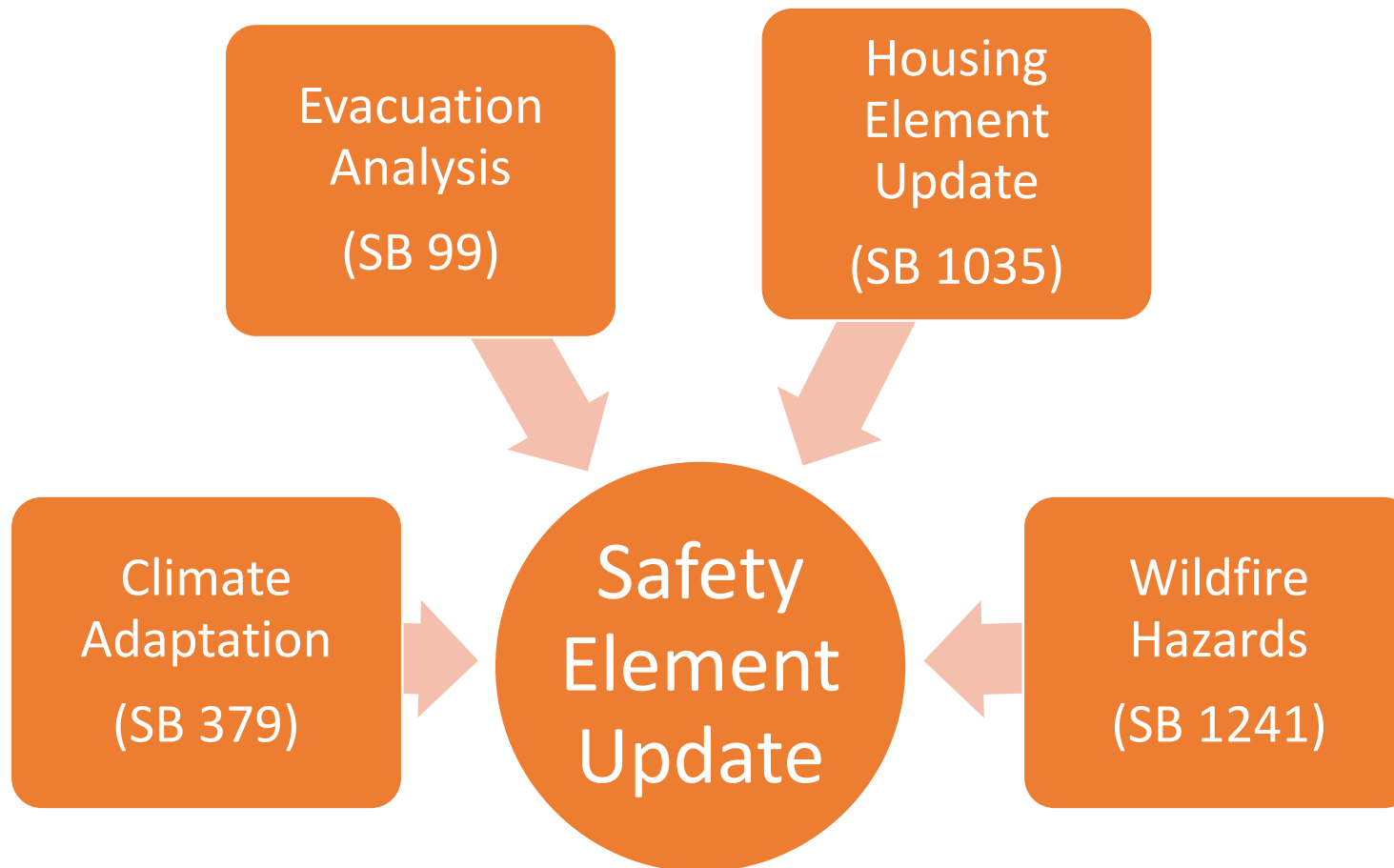




Why Update the Safety Element?



New State Requirements for Safety Elements



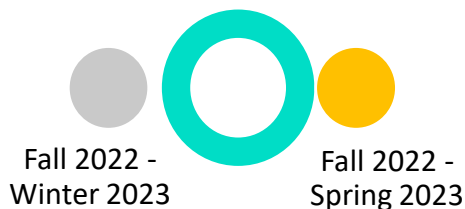
← **SB 1035**
Integrates the Housing and Safety Elements

← **AB 2140**
Provides financial benefits to jurisdictions that have integrated the MJHMP into the Safety Element

← **SB 1241**
Compliance includes oversight by Cal Fire



Outreach and Engagement



- Regularly updated information
- Opportunity to send feedback directly to County staff via email
- Planning2@pln.sccgov.org

Website



- Community Based Organization Led Workshops – December/January
- Opportunity to learn about project and provide direct feedback.

Workshops



- Online survey available in February/March 2023
- Opportunity to share insights about community concerns.

Online Survey



- Board of Supervisors/ Planning Commission Meetings
- Opportunity to provide comments/feedback

Meetings





Stay Involved



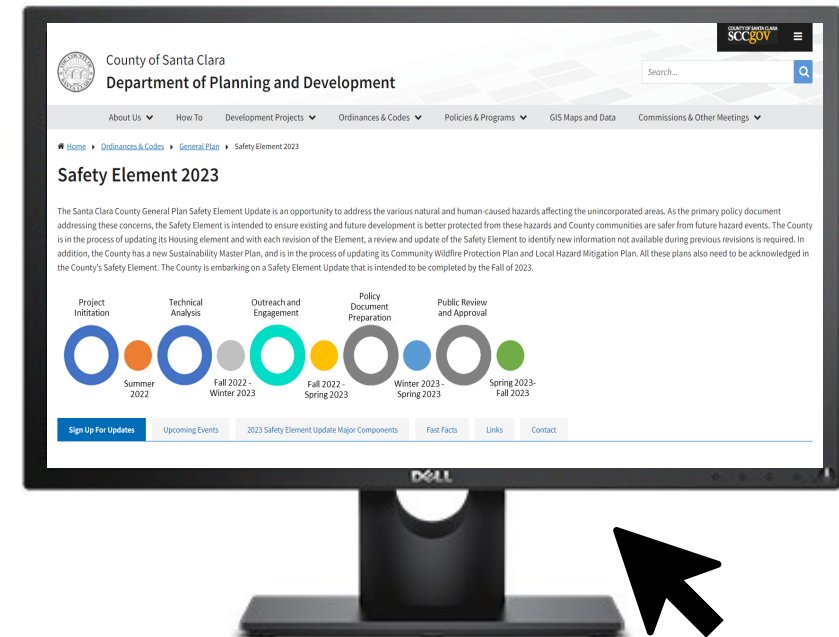
Contact us via:

Planning2@pln.sccgov.org

Scan Me:



Santa Clara County Safety Element Website



<http://www.sccgov.org/safety-element>